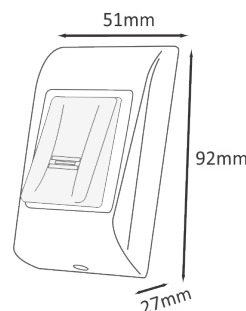


USER'S MANUAL



1. SPECIFICATIONS

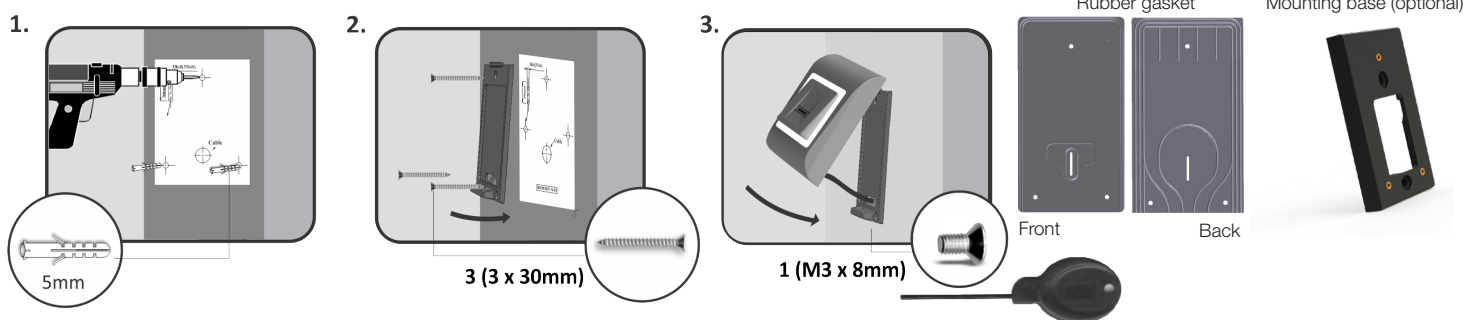
User capacity:	100 fingerprints and 100 Cards
Relays:	1 or 2 depending on the remote relay unit 1 with RTT and RU1 and 2 with RU2 and DINRTT
Output:	RS-485, Wiegand
Entry mode:	Fingerprint, Card, Fingerprint or Card
Proximity reading type:	EM 4002/4100 and HID (125kHz)
Reading distance:	Up to 4cm
Power supply:	12 VDC; max. 100mA
Buzzer, backlight control:	Yes, ON/OFF via XPR Smart Admin
Tamper:	Yes
RS-485 interface:	Yes, for connecting I/O boards like RU1, RTT, RU2, DINRTT
Door Open Time:	0 to 255 sec. or toggle (ON/OFF mode)
IP Factor:	IP54 (internal use only)
Operating Temperature:	0°C to 50°C
Operating humidity:	5% to 95% RH without condensation
Firmware upgrade:	Yes, via Bluetooth® wireless technology
Wiegand output:	Wiegand 24, 26, 32, 34, 56, 58 bits
Programming:	Via XPR Smart Admin
Door operation:	Via XPR Smart Access
Holidays:	24
Event capacity:	4000



Important note:

The **Bluetooth®** reader comes with RU1 remote relay unit. Make sure to make firmware update with the latest available firmware.

2. MOUNTING



Do not install the device and cabling close to a source of strong electro-magnetic fields like radio-transmitting antenna.

Do not place the device near or above heating equipments.

If cleaning, do not spray or splash water or other cleaning liquids but wipe it out with smooth cloth or towel.

Do not let children touch the device without supervision.

Note that if the sensor is cleaned by detergent, benzene or thinner, the surface will be damaged and the fingerprint can't be entered.

The operating temperature of the product is between 0°C - + 50°C. XPR™ cannot guarantee the functionality of the product if measures and advice before are not followed.

3. RESET READER TO DEFAULT



Reset
Service mode

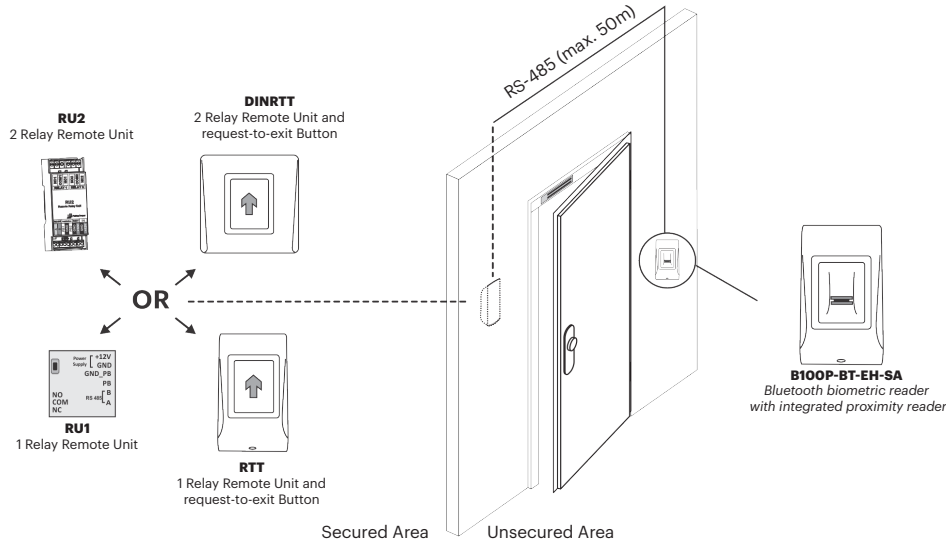
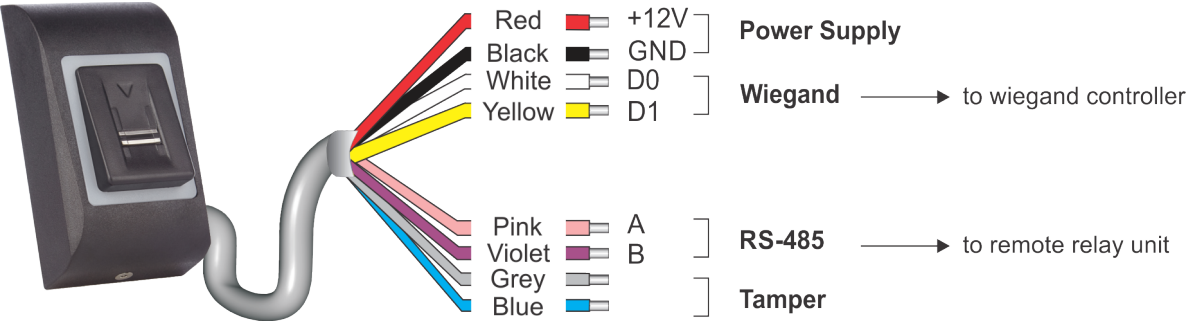
1. Turn the device OFF
2. Put dipswitch 1 to position ON
3. Turn the power ON
4. Wait approx. 15 seconds until continuous beeps.
5. Put dipswitch 1 to OFF
6. Wait for long beep.

The reset procedure will bring the reader to default. The password will be deleted, all the users and the reader will be unpaired from the remote relay unit.

Unpairing the reader after reset, prevents unauthorized reset and keeps the unit in high security state.

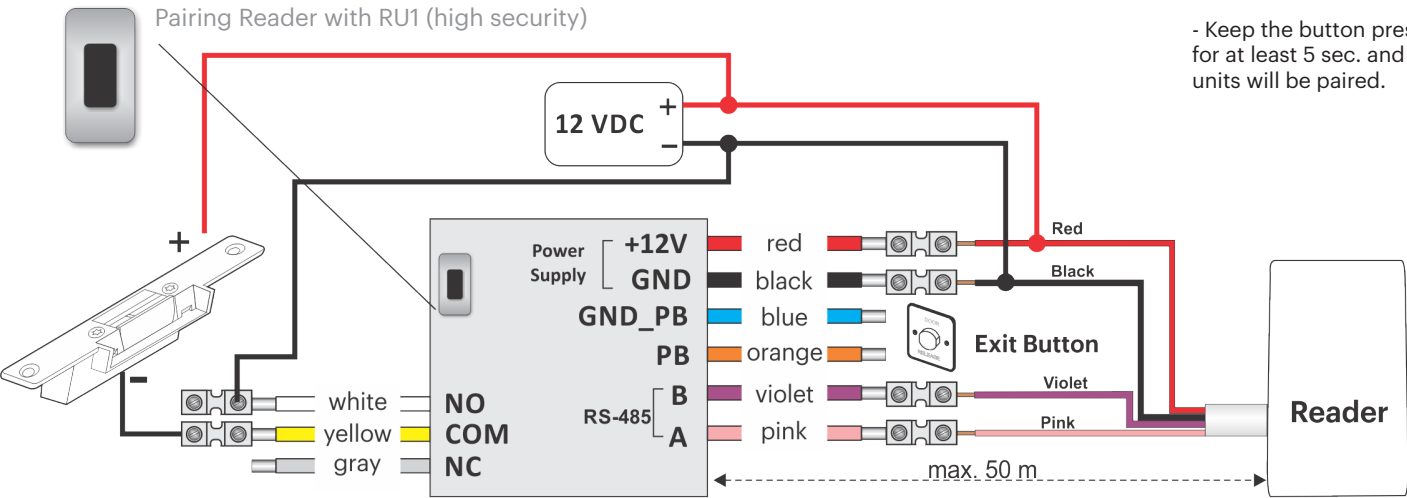
4. WIRING AND PAIRING

There are four options to wire and pair the reader. It can be paired to a remote relay unit (RU2, RU1, DINRTT and RTT).



The Bluetooth reader must be connected to remote relay unit, unless is used as wiegand reader.
The remote relay units compatible with B100P-BT-EH-SA are RU1, RU2, RTT and DINRTT. Once connected, the remote relay unit must be paired with the Bluetooth reader.
Pairing the reader with remote relay unit is done from the remote relay unit and enables added security. After being paired, it is not possible to switch any of the devices, since the reader will work only with the paired remote relay unit.

4.1 Wiring and pairing B100P-BT-EH-SA + RU1

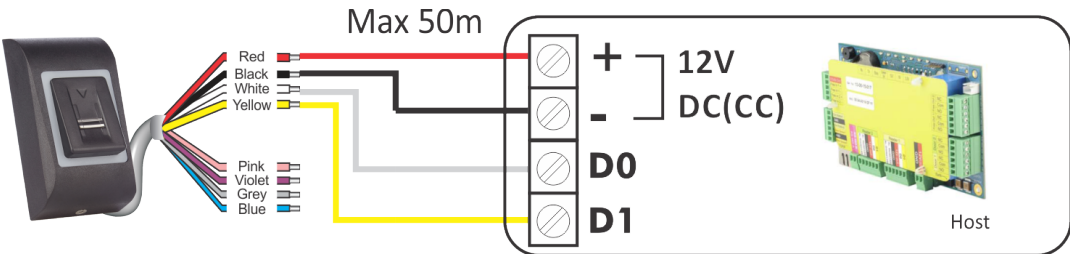


- Keep the button pressed for at least 5 sec. and the units will be paired.

Other pairing devices:

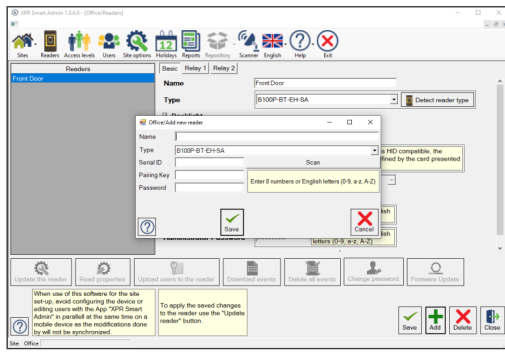
Device	Description	Relays
RU2	DIN rail mount remote relay unit	2
DINRTT	Flush mount sensitive push button and remote relay	2
RTT	Surface mount sensitive push button and remote relay	1

4.2 Wiring B100P-BT-EH-SA to Wiegand Controller



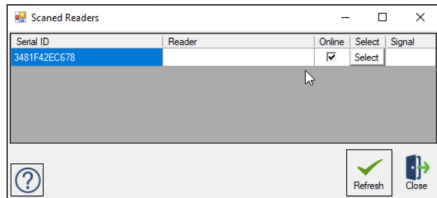
By default, the reader is set to Wiegand 26 bit.
You can set the reader, using the software, to Wiegand 24, 26, 32, 34, 56, 58 bits.

5. SETTING UP READERS WITH XPR SMART ADMIN WINDOWS SOFTWARE

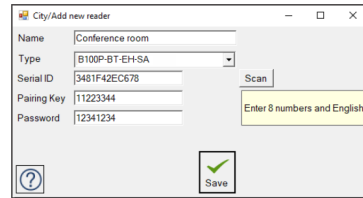


1. Add site first.
2. Click on "ADD" reader.
3. Select type "B100P-BT-EH-SA".
4. Scan for readers near by by clicking on "Scan". Found readers will be listed (pic.2). Click on "Select".
5. Add a pairing key between the PC and the Bluetooth reader and a password. (pic. 3)
6. If the pairing is successful, the buttons in the reader section will be enabled.(pic.4)

pic. 1



pic. 2



pic. 3



pic. 4

You can download 2 softwares for Windows: XPR Smart Access and XPR Smart Admin from our website:

Users Software



Application for users, allowing them to manage the doors from a distance. (distance: max. 5m).



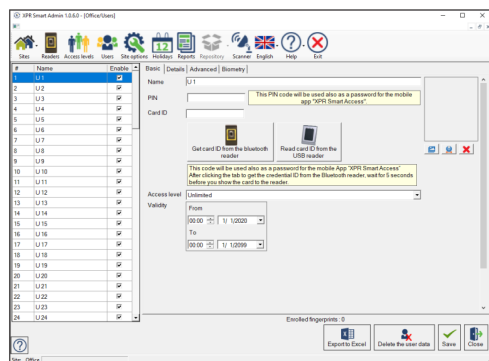
Administrator Software



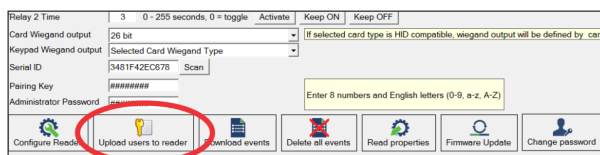
Software for the installation administrator, allowing him/her to program all readers and update them, manage users and their access rights, download events and edit reports. (distance: max. 5m).



6. ADDING USERS



1. Go to Users and select the user. Edit the name directly. Enable it.
2. Put a PIN Code and Card ID. The Card ID can be read directly from the reader or from USB desktop reader.
3. Select proper Access level and validity period.
4. Go to "Biometry" tab and enroll fingerprints by swiping min. 6 times each finger.
5. After this, go to the reader and "Upload users to reader".



Relay 1	Relay 2	Bluetooth	Delete
Default action	Default action	Enroll	Delete
Default action	Default action	Enroll	Delete
Default action	Default action	Enroll	Delete
Default action	Default action	Enroll	Delete
Default action	Default action	Enroll	Delete
Default action	Default action	Enroll	Delete
Default action	Default action	Enroll	Delete
Default action	Default action	Enroll	Delete
Default action	Default action	Enroll	Delete
Default action	Default action	Enroll	Delete
Default action	Default action	Enroll	Delete

The 2 smartphone apps are available in:



Users App



Application for users, allowing them to manage the doors from a distance. (distance: max. 5m).

Administrator App



Application for the installation administrator, allowing him/her to program one reader at a time and update it, manage users and their access rights, download events and edit reports. (distance: max. 5m).

This product herewith complies with requirements of EMC directive 2014/30/EU, Radio Equipment Directive 2014/53/EU. In addition it complies with RoHS2 directive EN50581:2012 and RoHS3 Directive 2015/863/EU.

