

# Limcet BOX

**Model : Limcet Link**

## **User manual**

This product meets the  
requirements after inspection  
The quality standard, allowed  
to leave the factory



Plug and Play



CarPlay



Android Auto



Carlife



Mirroring



Media



FCC&CE Certified

## 1. Introduction

Thank you for choosing to use this Limcet BOX.

### ·CarPlay

The iPhone's built-in car-machine interaction system works with the central control knob button to operate the voice control phone, information, navigation, music and Siri voice interaction for more information; supports wireless and wired connections to CarPlay

### ·CarLife

The car and machine care system developed by Baidu, supports the connection of iPhone and Android devices, voice control of telephone, information, navigation, and music; built-in "Xiaodu" voice control system, supports wireless and wired connections

### ·AndroidAuto

The original ecological Android car-machine interaction system developed by Google, voice control phone, information, navigation, music built-in voice control system;

### ·Front/Rear/360

The intelligent module can decode video, and can be equipped with front view, rear view (support display intelligent dynamic trajectory and radar), right view and 360 panoramic view

### ·Mirroring

Supports wired and wireless screen projection for iPhone and Android phones

### ·AHD HD video protocol

Added AHD HD rear view/360 video output interface

### ·USB video

Automatic media playback function, can directly insert U disk to play audio and video media

### ·DSP Power amplifier chip

Add DSP power amplifier chip to improve sound quality

## 2. Box parameters and warranty

Running voltage: 9-16V, 14.4V (rated) ;

Operating temperature : -30~+75℃;

Power consumption current: 1A (rated) , 3A (Max) ;

Quiescent current: less than 3mA;

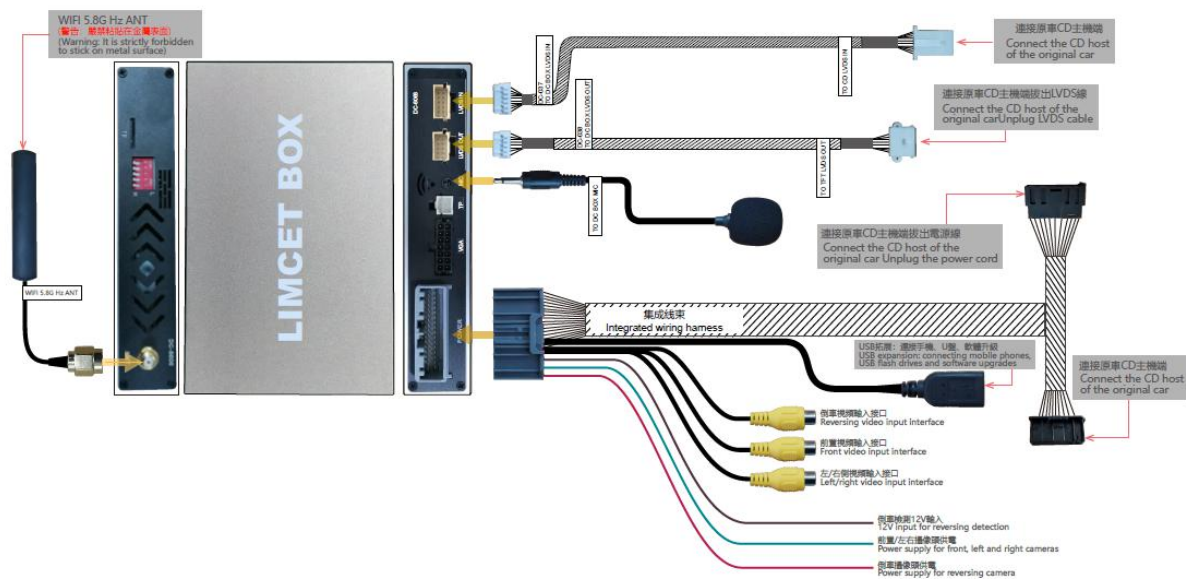
Storage temperature: -30~+85℃;

Shutdown current: 300mA (Clock is on) ;

Charging current:  $\leq 1.5A$ . when the USB charging current is  $> 3A$ , the host computer of the radio and receiver should start the circuit protection function to control the current below 1.5A to avoid burning the product.

### 3. Packing List

This car system consists of the following 9 units: 1080P video decoding, lossless music, Bluetooth hands-free, Mirroring, CarLife, Android Auto, rear view, AV-IN, Carplay, Hicar system settings. In the main interface of the car system, it mainly contains eight commonly used modules: video, music, Mirroring, Carplay, Hicar/CarLife/Android Auto, Bluetooth, video input, and settings. The instructions for each function will be introduced in turn later



### 4. Warranty Terms

Dear user:

Thank you for using our products. In order to make sure customers receive product is good, all our products have been strictly tested in our factory before delivery. And all our products enjoy 1 year warranty.

**But following conditions are not covered by warranty:**

- Warranty period over; the appearance with scratches dirt, deformation.
- Information on Warranty car and purchase bill inconsistent with product, or modified.
- There is no bar code or bar code not clearly on host unit.

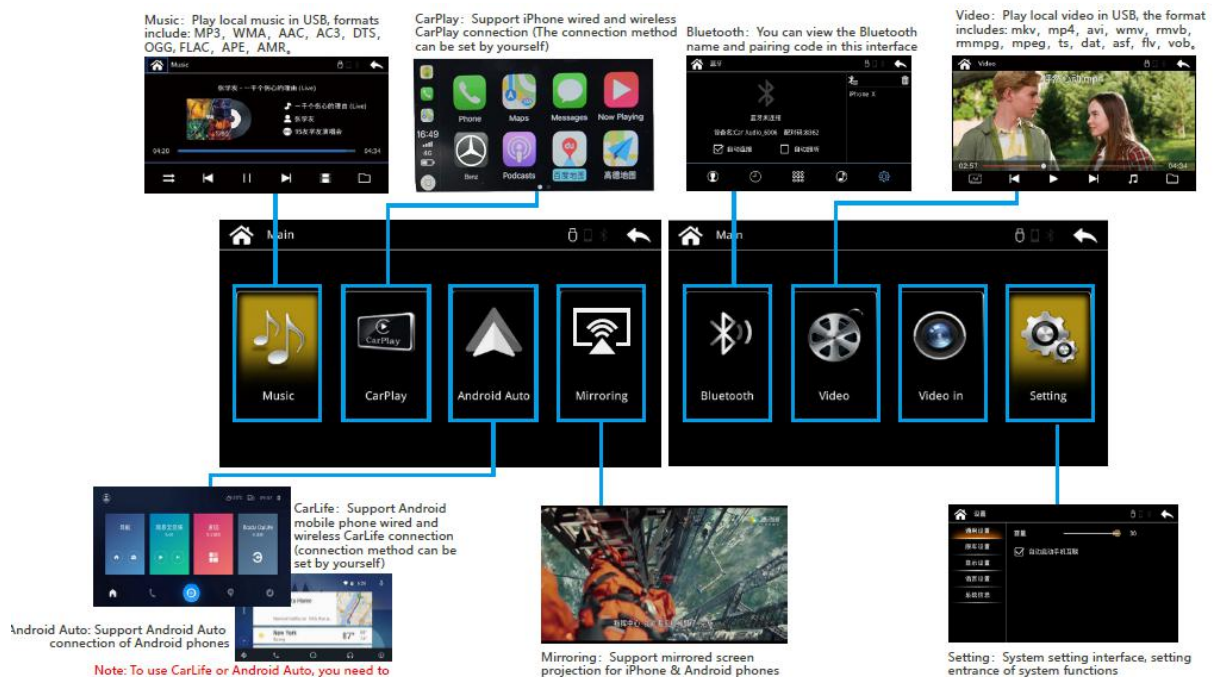
Damage caused by using, disassembling or refitting product not follow the instruction properly.

Not our company authorized personnel disassemble. repair or refit to cause human made damage.

The product damaged by improper transport or improper use.

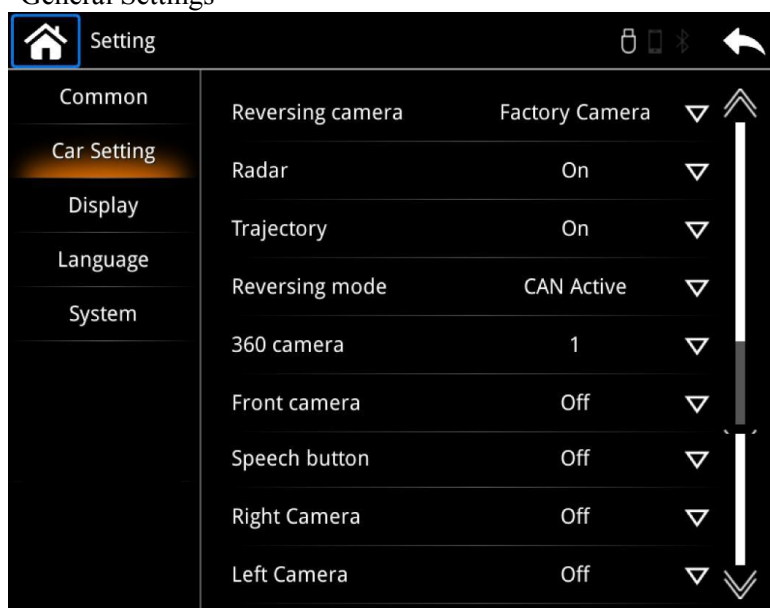
Damage due to irresistible factors (such as fire, flood, traffic matters Therefore, lightning, earthquakes, etc.).

## 5. Interface introduction



## 6. System settings

Regarding system settings, after the vehicle is started, the main interface of the vehicle system will be displayed. In the main interface, there is a [Settings] button. You can directly click the setting button to enter the main setting page. As shown in the following figure: each setting page of the system. Chart 2.1-System Settings "General Settings"



System settings "Original car settings"- "Driving-reversing camera" option



System Settings "Original Car Settings"- "-Panel- Contrast" Brightness" adjustment page



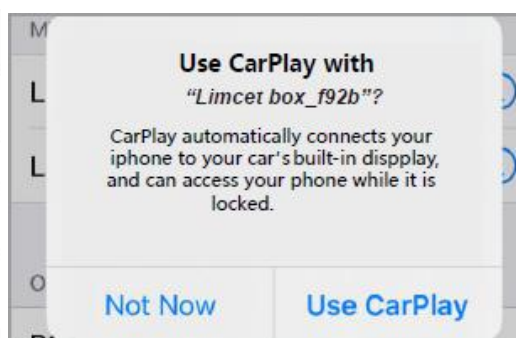
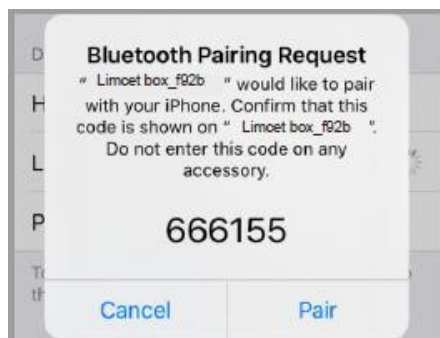
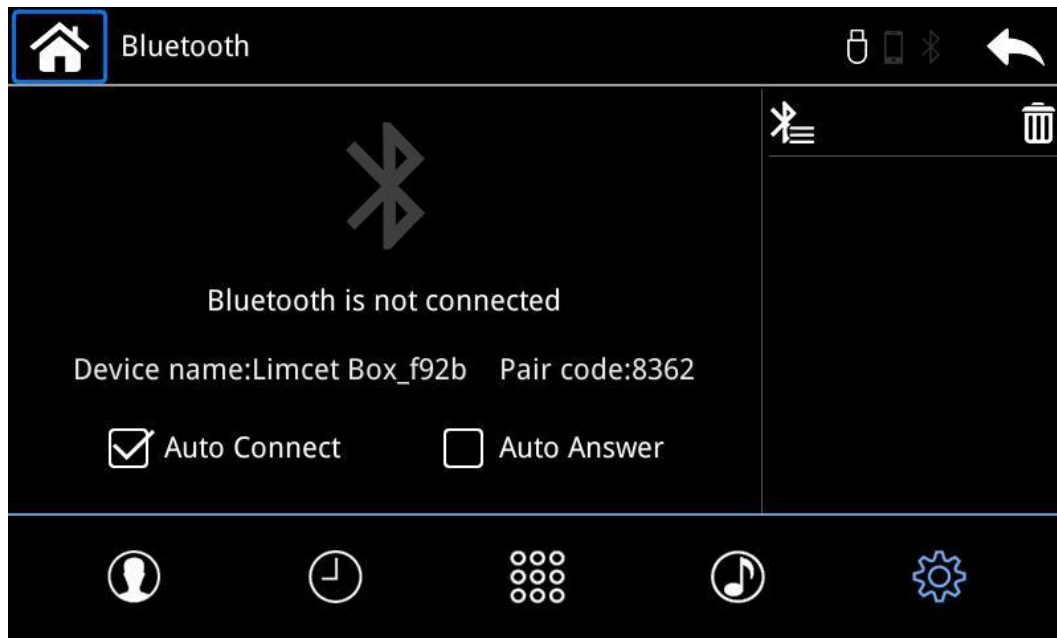
In this interface-click to show



Enter brightness, contrast, chroma, saturation adjustment

## 7. Open Carplay to view the operating instructions

Bluetooth search example "right picture"



## **8. About network usage**

The vehicle system uses the mobile phone's own network to use, and the traffic cost refers to the connected network. When the car system is connected to the wireless CarPlay, you only need to manually connect the Bluetooth of the mobile phone for the first time, and keep the Bluetooth of the mobile phone always on. After the CarPlay connection is successful, the Bluetooth of the mobile phone and the system will be automatically disconnected; then enter the WIFI authentication channel, and at the same time The mobile phone WIFI switch should also be turned on, but do not manually connect to the WIFI network of the local system. CarPlay will actively identify the dedicated hotspot and transmit the pop-up window to the car display. Install the mobile phone connection and the iPhone wired connection, just plug in the mobile phone data cable to complete the connection, no network is required

## **9. About driving safety**

Drivers should not operate the machine during driving, so as not to affect safe driving and cause traffic accidents. Safety first, smart entertainment second, please strictly abide by national traffic regulations!

## **10. Postscript**

So far, you have learned about the comprehensive and easy-to-use in-vehicle system software. You can now operate the car machine to experience the convenience and speed brought by the smart light screen system to your driving life, and enjoy the infinite joy brought by high technology! I wish you a smooth and safe journey! Due to the continuous upgrade of the software version, the screenshots in this manual may differ from the version you actually use without prior notice

## **FCC Caution.**

(1)§ 15.19 Labelling requirements.

This device complies with part 15 of the FCC Rules. Operation is subject to the following two conditions:

(1) This device may not cause harmful interference, and (2) this device must accept any interference received, including interference that may cause undesired operation.

§ 15.21 Changes or modification warning

Any Changes or modifications not expressly approved by the party responsible for compliance could void the user's authority to operate the equipment.

§ 15.105 Information to the user.

Note: This equipment has been tested and found to comply with the limits for a Class B digital device, pursuant to part 15 of the FCC Rules. These limits are designed to provide reasonable protection against harmful interference in a residential installation. This equipment generates uses and can radiate radio frequency energy and, if not installed and used in accordance with the

instructions, may cause harmful interference to radio communications. However, there is no guarantee that interference will not occur in a particular installation. If this equipment does cause harmful interference to radio or television reception, which can be determined by turning the equipment off and on, the user is encouraged to try to correct the interference by one or more of

the following measures:

- Reorient or relocate the receiving antenna.
- Increase the separation between the equipment and receiver.
- Connect the equipment into an outlet on a circuit different from that to which the receiver is connected.
- Consult the dealer or an experienced radio/TV technician for help.

This equipment complies with FCC radiation exposure limits set forth for an uncontrolled environment. This equipment should be installed and operated with minimum distance 20cm between the radiator and your body.