

BEAUTIFUL OUTSIDE



COMFORTABLE INSIDE



TABLE OF CONTENTS

Models	3	Maestro Accessory Submittals	36
Maestro Pro Inverter 12 HP (115V & 230V)		Louvred Grille Accessory - Rectangle	37
Features and Functions	4	Louvred Grille Accessory - Square	38
Performance Data	5	Side wall Adapter Submittal	39
Electrical, Compressor and Airflow	6	Window Sill Adapter Submittal	40
Physical Data	7	PTAC Retrofit Kit Submittal	41
Application and Installation	8	Sub Base Submittal	42
Installation	9	Recessed Panel Kit and Installation Housing	43
Parts	10	Sound Pressure & Sound Transmission Class	44
Wiring Diagrams	11	Certifications	
Maestro Smart 9 HP (115V)		California Energy Commission	45
Features and Functions	14	Maestro Pro Intertek ETL Certificate	46
Performance Data	15	Maestro Smart Intertek ETL Certificate	48
Electrical, Compressor and Airflow	16	Limited Warranty USA and Canada	49
Physical Data	17		
Application and Installation	18		
Installation	19		
Parts	20		
Wiring Diagram	21		
Accessories	22		
Controls Offering - Thermostats	25		

MODELS



Maestro Smart 9 HP (115V): Model #02216

The Smart Series is the year-round comfort solution, providing heating and cooling capacities up to 9,200 BTU/h. The unit is equipped with a multifiltration system, and dehumidification and sleep modes for whisper-quiet operation in residential and commercial applications.



Maestro Pro Inverter 12 HP (115V): Model #01925

The Pro Series, with its industry leading inverter compressor technology and variable-speed fan motor, provides unparalleled comfort with no swings in temperature when heating or cooling your home or business.



Maestro Pro Inverter 12 HP RVU (208/230V): Model #02283

The Pro Series, with its industry leading inverter compressor technology and variable-speed fan motor, provides unparalleled comfort with no swings in temperature when heating or cooling your home or business.



Maestro Pro Inverter 12 HP RVUX (208/230V): Model #02234

The Pro Series, with its industry leading inverter compressor technology and variable-speed fan motor, provides unparalleled comfort with no swings in temperature when heating or cooling your home or business. The unit has a 2.0 kW back up electric heater, which can be field programmed to turn on based on low ambient temperatures.

FEATURES AND FUNCTIONS: MAESTRO PRO INVERTER 12 HP

MODEL #01925

Industry leading inverter compressor technology provides unparalleled comfort in heating and cooling for both residential or commercial applications

Cooling Capacity (BTU/h): Up to 11,600

Heating Capacity (BTU/h): Up to 10,600

Installation Versatility: Low or high wall

Easy installation: Can be installed from inside the space in just a few minutes

Rotating Flap: Provides total air diffusion for consistent temperature throughout the space.

Backlite Display: On-board touch control

User Control Options:

- Multifunction remote (Standard)
- Wired wall mounted thermostat (Optional)
- Wireless wall mounted thermostat (Optional)

24 hour Timer

Sound Transmission: Best in Class STC and OITC



Dehumidification Mode

Controls humidity during mild ambient conditions for increased comfort

Economy Mode

Allows for energy saving by automatically optimizing the unit's performance

Auto Mode

Adjusts comfort settings based on ambient conditions.

Sleep Mode

Gradually increases the temperature setpoint ensuring whisper quiet operation, greater comfort and energy savings while you sleep.

Inverter Compressor

Innovative compressor technology that is versatile and efficient with a wide range of frequencies available and with electronic expansion valve (EXV).

Pro Power

The use of inverter technology provides a capacity boost up to 11,600 BTU/h

Remote Control

"Fully Digital" remote control allows functions such as dehumidification, silent mode, sleep mode and ventilation mode.

Heat Pump

Our reverse cycle heat pumps offer both heating and cooling to provide occupants with year-round comfort. It can also be used as backup heat during shoulder seasons.

Wi-Fi Ready

Industry leading Wi-Fi technology with all the security of the cloud

Variable Speed Fan (ECM)

The fan motor has a variable frequency drive technology installed to control motor speed and torque (V PRO). Designed to eliminate swings in temperature resulting in reduced energy consumption while providing quiet operation in all modes. Variable speed motor maintains a consistent temperature throughout the conditioned space.

Silent Mode

Maestro Pro is designed so the inverter compressor and variable speed fan motor operate for maximum acoustical comfort down to 32 dB(A) (sound pressure). All enclosed in a sleek Italian designed cabinet by Matteo Thun and lined with state-of-the-art sound reducing material. Allows the user to set the system to minimum sound level.

Pure System 2

A multi-filtration system that combines two state of the art filtration technologies:

- **An Electrostatic Filter** designed to eliminate small particles such as smoke, dust, pollen and pet dander to provide relief to people with allergies.
- **An Active Carbon Filter** which eliminates unpleasant odors keeping the indoor air quality fresh and clean.

PERFORMANCE DATA: MAESTRO PRO INVERTER 12 HP

Model			01925	02234	02283
Cooling	Capacity Range (Min - Max)	Btu/h	6,600 - 11,600	6,100 - 10,700	6,600 - 11,600
	Capacity (Rated)	Btu/h	8,300	7,600	8,300
	Input Power (Rated)	W	800	710	800
	Input Power (Max)	W	1,400	1,200	1,400
	Operating Range (Outdoor)	°F/ °C	64°F/18°C-109°F/43°C	64°F/18°C-109°F/43°C	64°F/18°C-109°F/43°C
	Combined Energy Efficiency Ratio	CEER	9.7	13.0	9.7
	Moisture Removal	Pts/h	2.3	2.1	2.3
	Sensible Heat Factor	%	0.7	0.7	0.7
Heating 47°F	Capacity Range (Min - Max)	Btu/h	6,200 - 10,600	5,800 - 10,200	6,200 - 10,600
	Capacity (Rated)	Btu/h	8,450	8,050	8,450
	Input Power (Rated)	W	825	800	825
	Input Power (Max)	W	1,400	1,200	1,400
	Energy Efficiency	COP	3.0	2.9	3.0
	Operating Range (Outdoor)	°F	5°F/-15°C-75°F/24°C	5°F/-15°C-75°F/24°C	5°F/-15°C-75°F/24°C
	Defrost Method		Reverse cycle	Reverse cycle	Reverse cycle
Heating 17°F	Capacity Range (Min - Max)	Btu/h	2,900 - 4,900	2,700 - 4,700	2,900 - 4,900
	Input Power (Min-Max)	W	390 - 930	370 - 890	390 - 930
	Energy Efficiency (Min-Max)	COP	2.15 - 1.54	2.13 - 1.53	2.15 - 1.54
Heating 5°F	Capacity Range (Min - Max)	Btu/h	2,200 - 4,000	2,100 - 3,800	2,200 - 4,000
	Input Power (Min - Max)	W	340 - 780	320 - 730	340 - 780
	Energy Efficiency (Min - Max)	COP	1.90 - 1.50	1.53 - 1.92	1.90 - 1.50
Sound	STC (Sound Transmission Class)		36	36	36
	OITC (Outdoor/Indoor Transmission Class)		25	25	25
	Sound Level	dB(A) min-max	32 - 43	32 - 43	32 - 42
	Outdoor	dB(A)	up to 53	up to 53	up to 53

- Test condition: Data refers to conditions and parameters as required by DOE requirements governing this product type.
HEATING MODE: Outdoor Ambient Temperature DB 47°F/8.3°C WB 43°F/6°C; Indoor Ambient DB 70°F/21°C - WB 60°F/15.6°C
COOLING MODE: Outdoor Ambient Temperature DB 95°F/35°C WB 75°F/24°C; Indoor Ambient DB 80°F/26.7°C - WB 67°F/19.4°C
- Maximum capacity achieved with Power Pro Boost inverter technology. To achieve full capacity and efficiency 8" diameter openings are recommended. Alternately, 6.5" diameter openings can be used however there is a corresponding loss to capacity and efficiency which can vary based on the specific application.
- CEER is calculated according to the AHAM RAC-1-2020 standard. The Combined Energy Efficiency Ratio (CEER) is a standard that measures the combined efficiency of the unit when it is in standby and when it's actually cooling a space
- Test conditions for sound ratings are conducted as per DOA rating conditions, conducted in a sound chamber performed at a distance of 6.5 feet (2 meters). Minimum sound pressure values are rated in ventilation mode only.
- STC and OITC calculated by an independent 3rd party in accordance with ASHRAE standards.

ELECTRICAL, COMPRESSOR & AIRFLOW: MAESTRO PRO INVERTER 12 HP

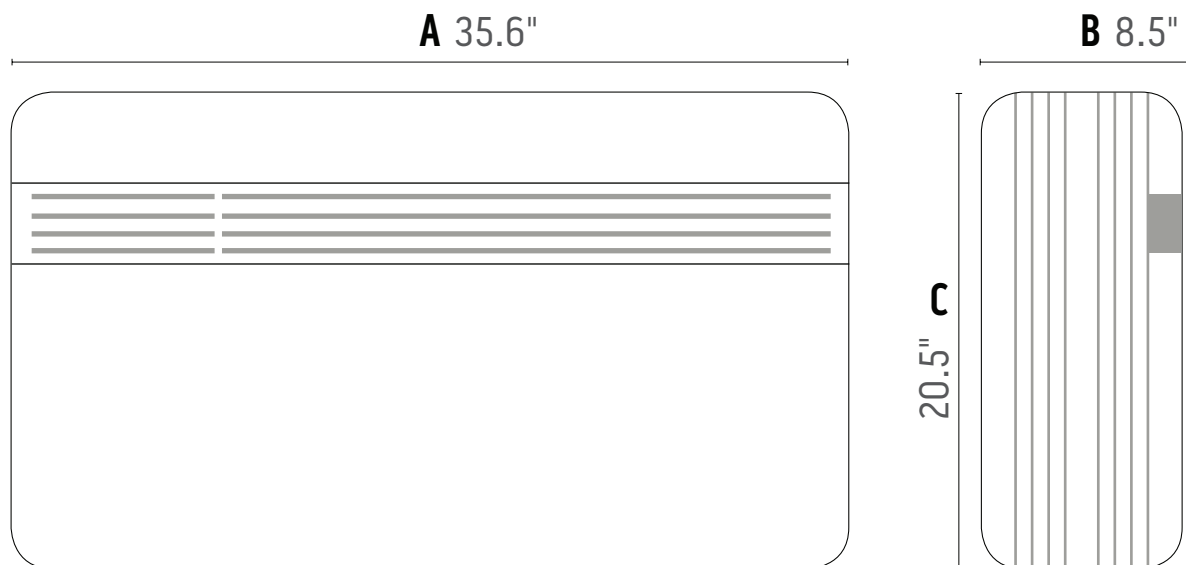
Model		01925	02234	02283
Compressor	Type	Rotary Inverter	Rotary Inverter	Rotary Inverter
	Brand	GMCC	GMCC	GMCC
	RLA	A	4.9	4.9
	Refrigerant	ASHRAE #	R-410A	R-410A
	Refrigerant Factory Charge	Ibs - oz	1 - 5	1 - 5
	Oil	Type	VG74	VG74
Electrical		Oz.	9.5	9.5
	Voltage	AC Volts	115	208 - 230
	Volt Range		98 - 127	187 - 253
	Hz/Phase		60-1	60-1
	Power Supply		LCDI power cord	LCDI power cord
	Power Factor		0.85	0.85
	Cooling (Rated)	A	9.7	3.5
	Heating (Rated)	A	9.9	3.8
	Outdoor EC Fan Motor	F.L.A.	1.93	0.97
		HP	0.17	0.17
	Indoor EC Fan Motor	F.L.A.	.33	.14
	MCA	A	10.9	12.5
	MOCP	A	15	15
	Input Power (standby)	W	3	3
	Input Power (off mode)	W	.5	.5
Airflow	Indoor	Type	ECM	ECM
		CFM	Up to 245	Up to 290
		Speeds	3	3
		dB(A)	Up to 41	Up to 41
	Outdoor	Type	ECM	ECM
		CFM	Up to 350	Up to 350
		Speeds	6	6
		dB(A)	51	51
		Vent	6.4" - 8"	6.4" - 8"

PHYSICAL DATA: MAESTRO PRO INVERTER 12 HP

Model	01925		02234		02283
Controls	Basic Functionality		Backlit, Dimable, On-board Touch Controller		
	WiFi		Optional	Optional	Optional
	Third Party Controller Compatibility		Optional for Standard and Smart Thermostats		
	BACnet/Modbus Compatible		Yes	Yes	Yes
	ADA Compliant		Yes	Yes	Yes
	Dry Contact		Yes	Yes	Yes
	Restricted Options		Key Pad Lock	Key Pad Lock	Key Pad Lock
	Power Outage Restart		Returns to Last Setting		
Modes	Operation		Cooling, Heating, Dehumidify, Fan Only, Auto		
	Restricted Modes		Heat Only, Cool Only, Temperature Limiting		
	Timers		24 Hour	24 Hour	24 Hour
Condensate Removal	Cooling		Built-in condensate slinger and disposal via gravity drain		
	Heating (Heat Pump)		Gravity Drain	Gravity Drain	Gravity Drain
	Drain Pipe Size	In.	0.8"	0.8"	0.8"
External Vents	Vent Pipes	In.	6.4" - 8"	6.4" - 8"	6.4" - 8"
	Grilles		Standard and Custom Options Available		
Physical Data	Unit	W/H/D	35.5" x 20.4" x 8.5"	35.5" x 20.4" x 8.5"	35.5" x 20.4" x 8.5"
	Shipping	W/H/D	38.6" x 24" x 13"	38.6" x 24" x 13"	38.6" x 24" x 13"
	Net Weight	Lbs.	86	86	86
	Shipping Weight	Lbs.	93	93	93
	Cabinet	Color	RAL 9003	RAL 9003	RAL 9003
		Finish	Specular high gloss	Specular high gloss	Specular high gloss
		Material	Plastic	Plastic	Plastic
Certification	Safety		UL 60335-2-40	UL 60335-2-40	UL 60335-2-40
	Energy Efficiency		AHAM RAC-1-2020	AHAM RAC-1-2020	AHAM RAC-1-2020
Warranty	1 Year (Limited)		Unit Replacement	Unit Replacement	Unit Replacement
	2 Years (Limited)		Parts	Parts	Parts
	7 Years (Limited)		Compressor	Compressor	Compressor
Origin	Country of Origin		Italy	Italy	Italy

APPLICATION & INSTALLATION: MAESTRO PRO INVERTER 12 HP

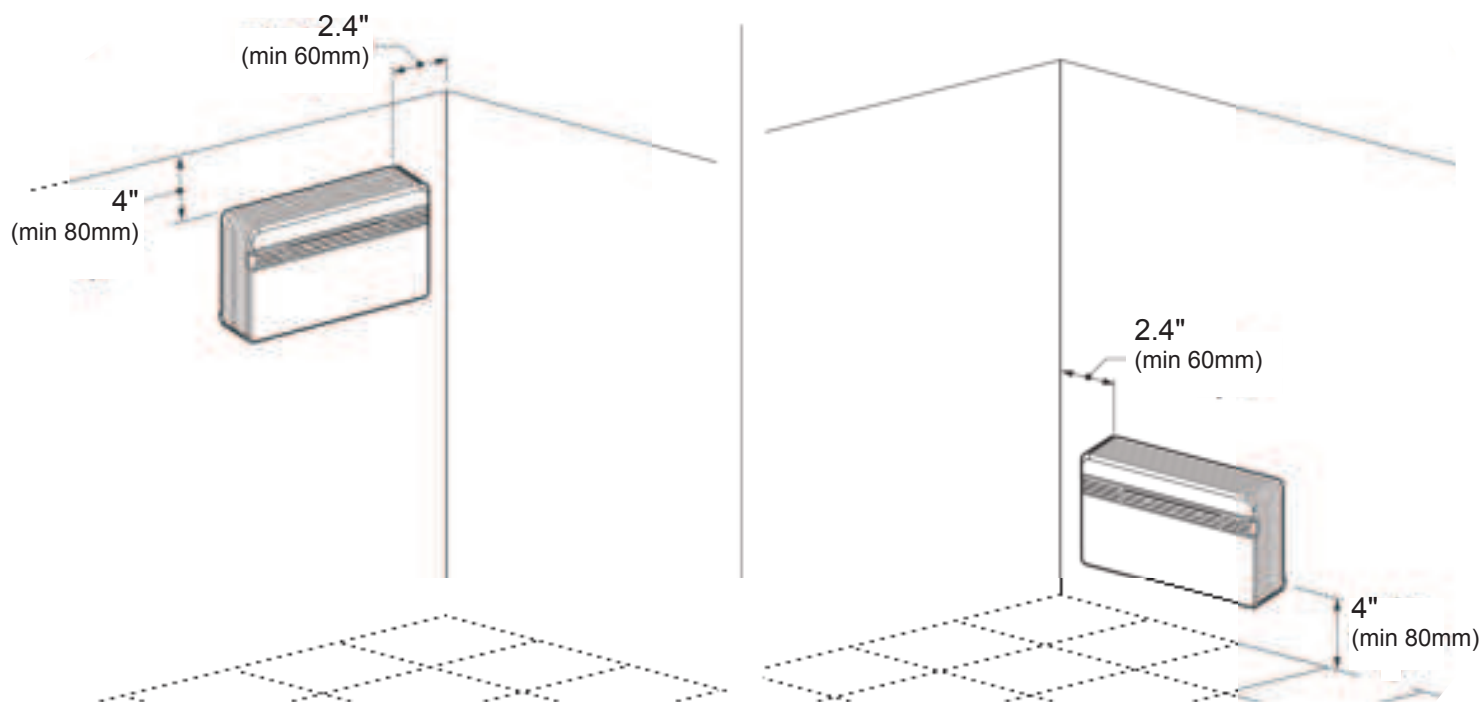
DIMENSIONS:



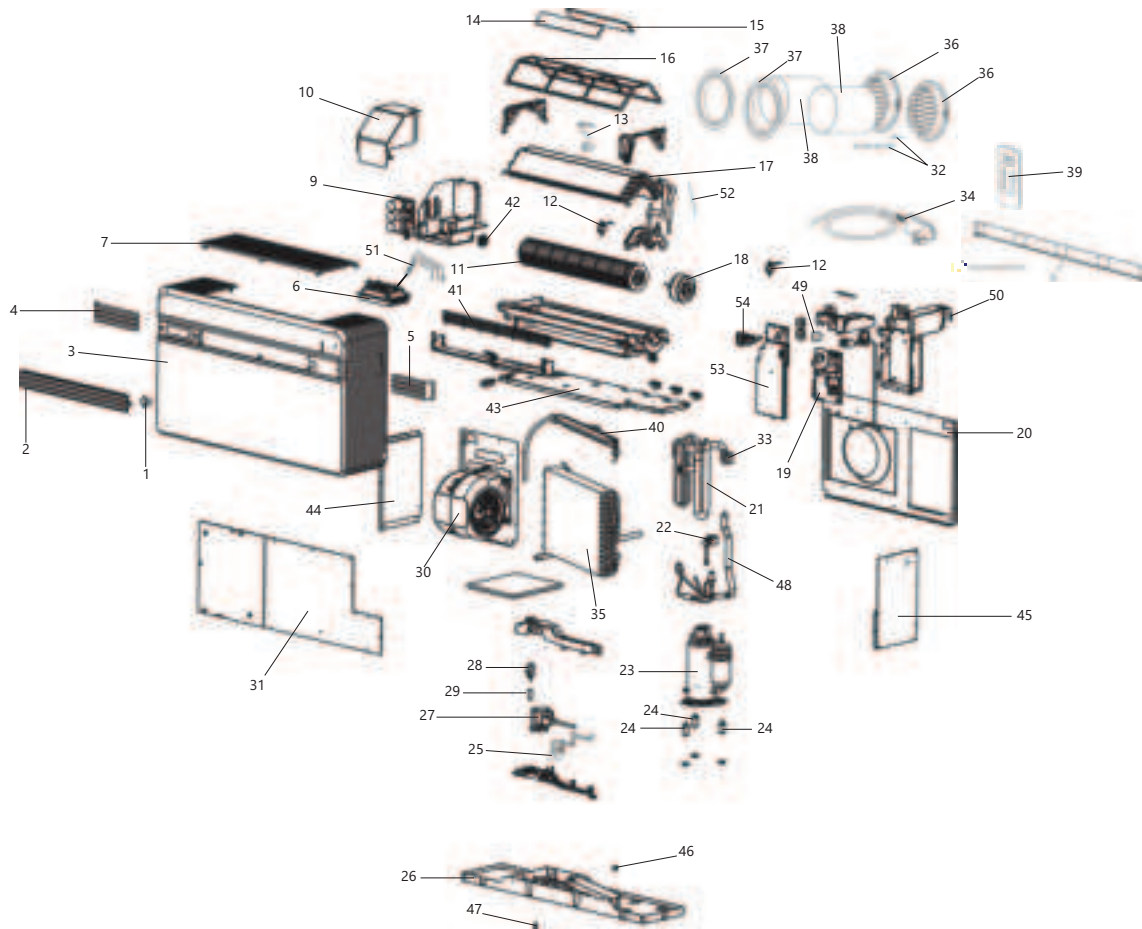
Unit Dimensions

A	B	C	Weight
35.6"	8.5"	20.5"	86 lbs

CLEARANCES:



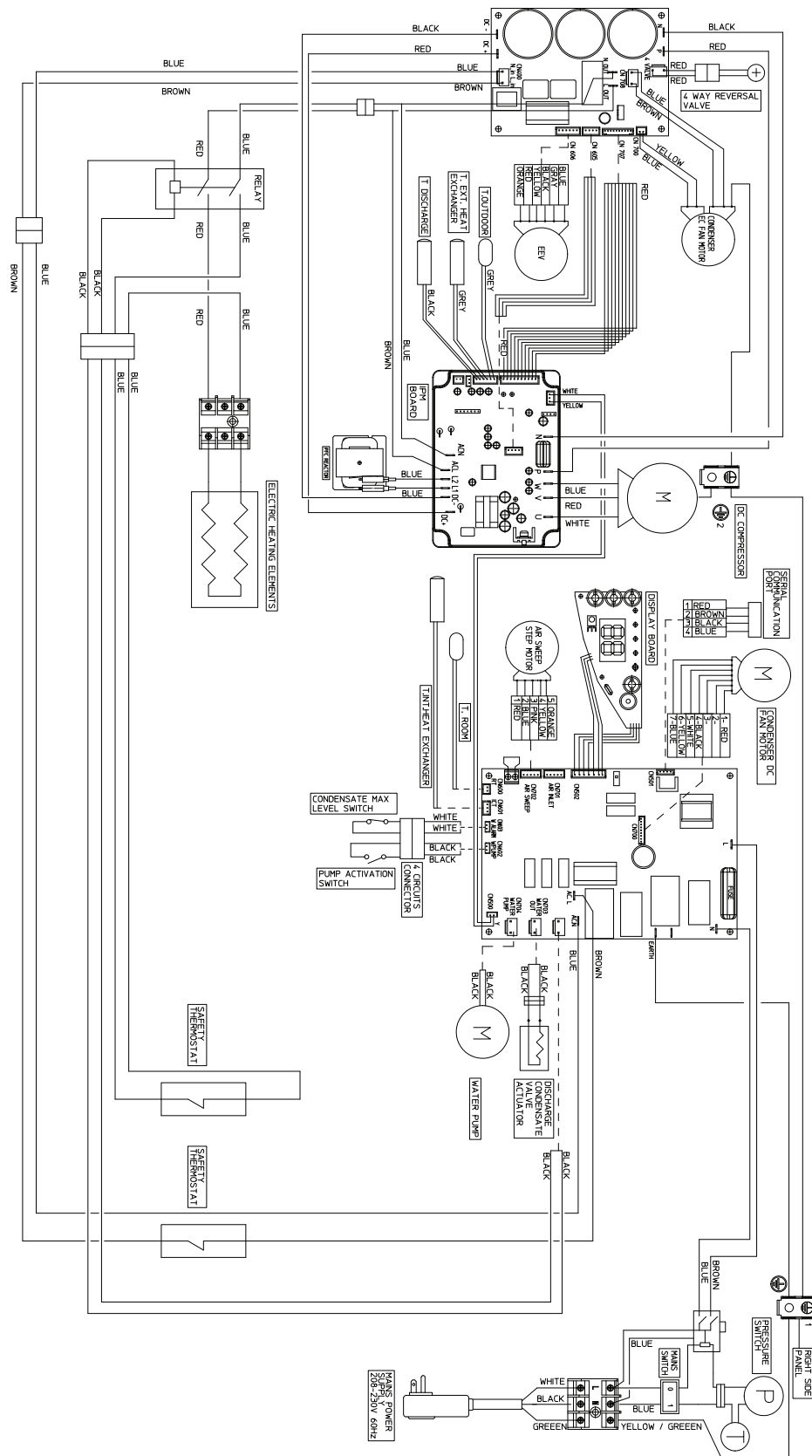
PARTS: MAESTRO PRO INVERTER 12 HP



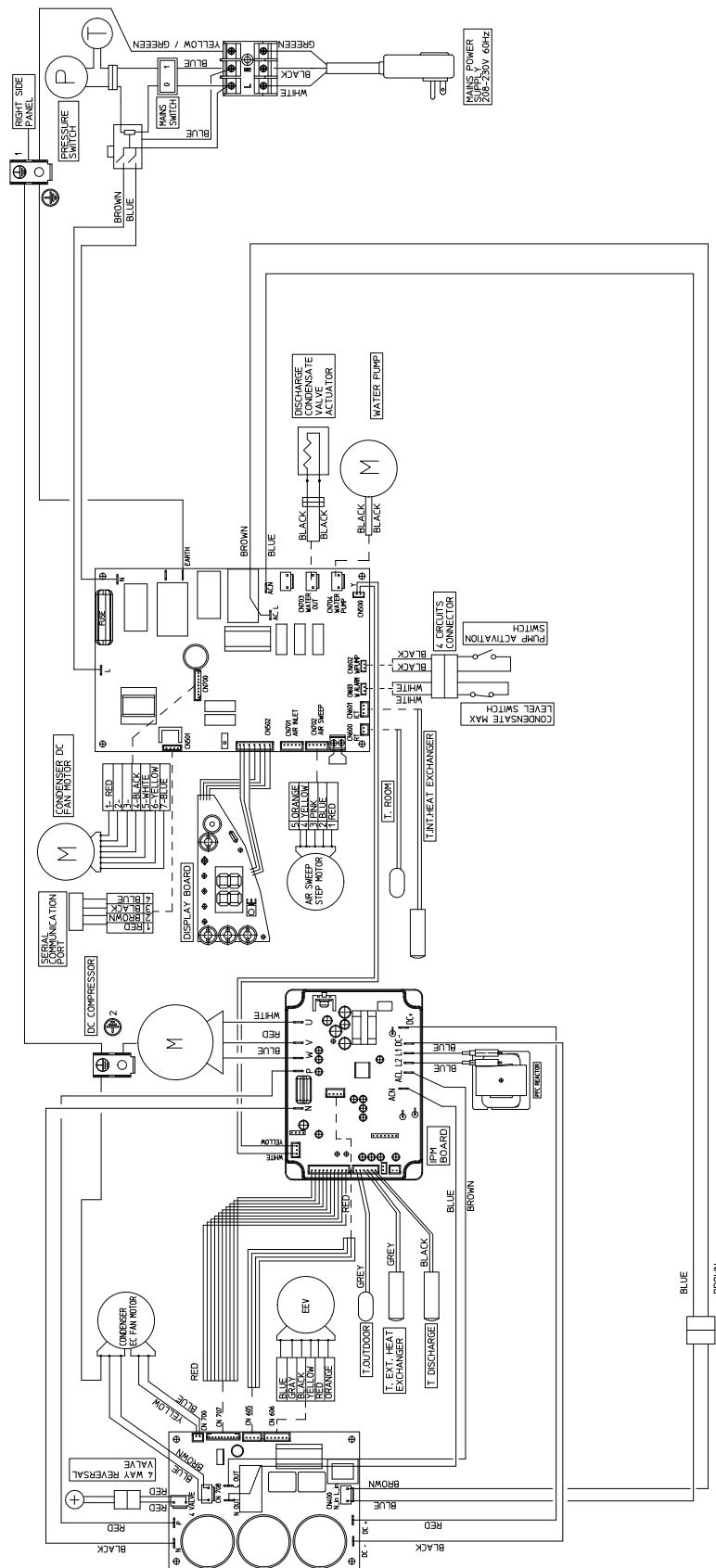
- | | | |
|---|--|---|
| 1. Step Motor - Part #277816A | 20. Rear Panel - Part #595230A | 38. Duct Sleeves - Part #242440A |
| 2. Flap - Part #282642B | 21. Four Way VAL ASSY - Part #595357A | 39. Pro Remote Control - Part #592585C |
| 3. Aesthetic Group - Part #595366A | 22. Expansion Valve Coil - Part #277831A | 40. Slinger - Part #595221B |
| 4. Left Mask - Part #282730A | 23. Compressor - Part #277917A | 41. Protection Grid - Part #214691B |
| 5. Right Mask - Part #282733A | 24. Vibration Dumping for Compressor - Part #281502A | 42. Fan Elastic Mount - Part #279391A |
| 6. Main ODU Inverter Board 115V - Part # 277912C | 25. Float Assembly - Part #595177A | 42. Teflon Bearing - Part #279392A |
| 7. Upper Panel - Part #282732A | 26. Lower Drain Pan - Part #282712A | 43. Condensing Cover Group - Part #595234B |
| 9. IPM Board - Part #277900A | 27. Pump - Part #277819B | 44. Left Panel Group - Part #595233A |
| 10. ODU Board Cover - Part #282786A | 28. Thermal Actuator - Part #277865A | 45. Right Panel Group - Part #595355A |
| 11. Tangential Fan - Part #282740A | 29. Actuator Plug - Part #282715A | 46. Main Drain Plug - Part #K190000500A |
| 12. Pro mounting Bracket - Part #214268A | 30. Condenser fan assembly - Part #595307A | 47. Secondary Drain Plug - Part #242473A |
| 13. Room Temperature Sensor - Part #255436A | 31. Front Cover Group - Part #595354A | 48. Expansion valve assembly - Part #595358A |
| 14. Carbon Filter - Part #K070011500A | 32. Spring and Chain kit - Part #599922A | 49. Relais Finder 120VAC/16A 250V - Part #277885A |
| 15. Particulate Filter - Part #K070011600A | 33. Four Way Coil Assy - Part #595257A | 50. Bipolar Switch - Part #276986A |
| 16. Mesh Filter - Part #282739A | 34. LCDI Power Cable (Tower 30380) - Part #K160010400A | 51. ODU Temperature Sensors - Part #255435A |
| 17. Evaporator Heat Exchanger Group - Part #595269A | 35. Condenser Heat Exchanger Assy - Part #595264A | 52. IDU Heat-Exchang. Temperature - Part #255437A |
| 18. Evaporator Motor - Part #277914A | 36. Exterior grille set of 2 - Part #594825A | 53. IDU Board Front Cover 115v - Part #282789A |
| 19. Main Board HP ASK89 - Part #277901C | 37. Inner grille set of 2 - Part #282465A | 54. Display Electric Board - Part #277890A |



WIRING DIAGRAM: MAESTRO PRO INVERTER 12 HP WITH 2KW ELECTRIC HEAT (230V) MODEL #2234



WIRING DIAGRAM: MAESTRO PRO INVERTER 12 HP (230V) MODEL #2283



FEATURES AND FUNCTIONS: MAESTRO SMART 9 HP

MODEL #02216

Designed to provide quiet and efficient comfort cooling and heating for both residential or commercial spaces.

Cooling Capacity (BTU/h): 9,200

Heating Capacity (BTU/h): 8,500

Comfort Model: Heat Pump

Refrigerant: R410A

Installation Versatility: High or low wall

Easy installation: Can be installed from inside the space in just a few minutes

Rotating Flap: Provides total air diffusion for consistent temperature throughout the space

User Control Options:

- Multifunction remote (Standard)
- Wireless Wall Mounted Thermostat (Optional)

24 hour Timer

Sound Transmission: Best in Class STC and OITC

Dehumidification Mode

Reduces airflow to increase the amount of moisture removed from the space.

Fan Mode

Adjustable 3 speed fan with fan only mode to optimize air circulation

Auto Mode

Adjusts setpoint based on ambient temperature

Sleep Mode

Gradually increases the temperature setpoint ensuring whisper quiet operation, greater comfort and energy savings while you sleep.

Heat Pump

Our reverse cycle heat pumps offer both heating and cooling to provide occupants with year-round comfort. It can also be used as backup heat during shoulder seasons.

Comfort Cooling

Cooling capacity can reach up to 9,200 BTU/h providing occupants with unparalleled temperature and humidity control of their indoor environment.

Industry Leading Italian Design:

Maestro Smart is the first AC or HP that does not require an outdoor unit! Only two louvered penetrations can be seen on the exterior of the building or home.

Pure System 2

A multi-filtration system that combines two state of the art filtration technologies:

- **An Electrostatic Filter** designed to eliminate small particles such as smoke, dust, pollen and pet dander to provide relief to people with allergies.
- **An Active Carbon Filter** which eliminates unpleasant odors keeping the indoor air quality fresh and clean.

Wi-Fi Ready

Industry leading Wi-Fi technology with all the security of the cloud

PERFORMANCE DATA: MAESTRO SMART 9 HP

Model

02216

Cooling	Capacity (Max)	Btu/h	9,200
	Input Power (Rated)	W	930
	Operating Range (Outdoor)	°F/ °C	64°F/18°C-109°F/43°C
	Combined Energy Efficiency Ratio	CEER	9.3
	Moisture Removal	Pts/h	2.5
	Sensible Heat Factor	%	.7
Heating 47°F	Capacity (Rated)	Btu/h	8,500
	Input Power (Rated)	W	850
	Input Power (Max)	W	1,000
	Energy Efficiency	COP	2.9
	Operating Range (Outdoor)	°F/ °C	5°F/-15°C-75°F/24°C
	Defrost Method	Reverse cycle	
Heating 17°F	Rated Capacity	Btu/h	3,400
	Input Power (Rated)	W	600
	Energy Efficiency (Rated)	COP	1.66
Heating 5°F	Rated Capacity	Btu/h	2,700
	Input Power (Rated)	W	570
	Energy Efficiency	COP	1.39
Sound	STC (Sound Transmission Class)		36
	OITC (Outdoor/Indoor Transmission Class)		25
	Sound Level	dB(A) min-max	33-42
	Outdoor	dB(A)	Up to 56

- CEER is calculated according to the AHAM RAC-1-2020 standard.
- The Combined Energy Efficiency Ratio (CEER) is a standard that measures the combined efficiency of the unit when in standby and cooling modes
- The sound pressure level was measured in a sound testing at a 6.5 ft distance from the front of the unit meter of height.
Min means internal noise fan only at minimum speed.
- STC and OITC (Sound Transmission) calculated by an independent 3rd party as per ASHRAE standards
- Data plate amps listed as 12amps is based on a power factor of .86 using 1150 watts at 115vac MOCP is 15 amp breaker

ELECTRICAL, COMPRESSOR & AIRFLOW: MAESTRO SMART 9 HP

Model

02216

Compressor

Type		Rotary
Brand		GMCC
RLA	A	6.6
LRA	A	38.9
Refrigerant	ASHRAE #	R-410A
Refrigerant Factory Charge	lbs - oz	1 - 7
Oil	Type	VG74
	Oz.	10.1

Electrical

Voltage	AC Volts/Phase/Hertz	115
Volt Range	Volts	109-127
Hz/Phase		60-1
Power Supply		LCDI power cord
Power Factor		.91
Cooling (Rated)	A	8.3
Heating (Rated)	A	8.15
Outdoor EC Fan Motor	F.L.A.	.65
	HP	.06
Indoor EC Fan Motor	F.L.A.	.44
MCA	A	11
MOCP	A	15
Input Power (standby)	W	.5
Input Power (off mode)	W	.5

Airflow

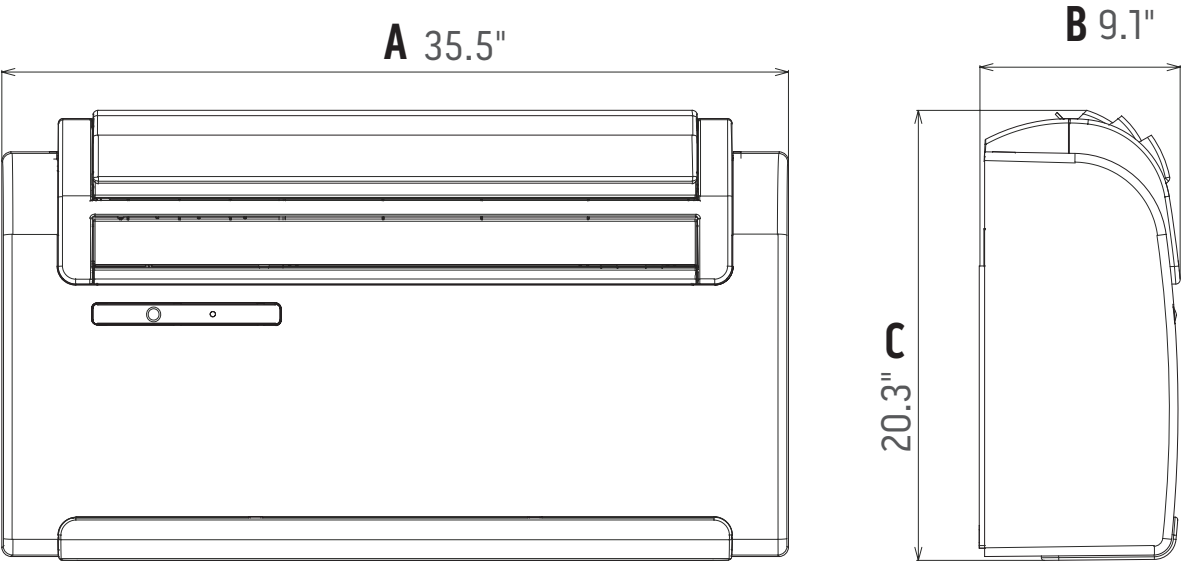
Indoor	Type	PSC
	CFM	Up to 215
	Speeds	3
	dB(A)	Up to 40
Outdoor	Type	ECM - Variable
	CFM	265
	Speeds	1
	dB(A)	Up to 54
	Vent	6.4" - 8"

PHYSICAL DATA: MAESTRO SMART 9 HP

Model	02216		
Controls	Basic Functionality		Dimable
	WiFi		Optional
	Third Party Controller Compatibility		Optional for Standard and Smart Thermostats
	BACnet/Modbus Compatible		Yes
	ADA Compliant		Yes
	Dry Contact		Yes
	Restricted Options		Key Pad Lock
	Power Outage Restart		Returns to previous setting
Modes	Operation		Cooling, Heating, Dehumidify, Fan Only, Auto
	Restricted Modes		Heat Only, Cool Only, Temperature Limiting
	Timers		24 Hour
Condensate Removal	Cooling		Built-in condensate slinger and disposal via gravity drain
	Heating (Heat Pump)		Gravity Drain
	Drain Pipe Size	In.	0.8"
External Vents	Vent Pipes	In.	6.4" - 8"
	Grilles		Standard and Custom Options Available
Physical Data	Unit	W/H/D	35.5" x 20.25" x 9"
	Shipping	W/H/D	38.5" x 24" x 14"
	Net Weight	Lbs.	88
	Shipping Weight	Lbs.	97
	Cabinet	Color	RAL 9003
		Finish	Specular high gloss
		Material	Plastic
Certification	Safety		UL 60335-2-40
	Energy Efficiency		AHAM RAC-1-2020
Warranty	1 Year (Limited)		Unit Replacement
	2 Years (Limited)		Parts
	7 Years (Limited)		Compressor
Origin	Country of Origin		Italy

APPLICATION & INSTALLATION: MAESTRO SMART 9 HP

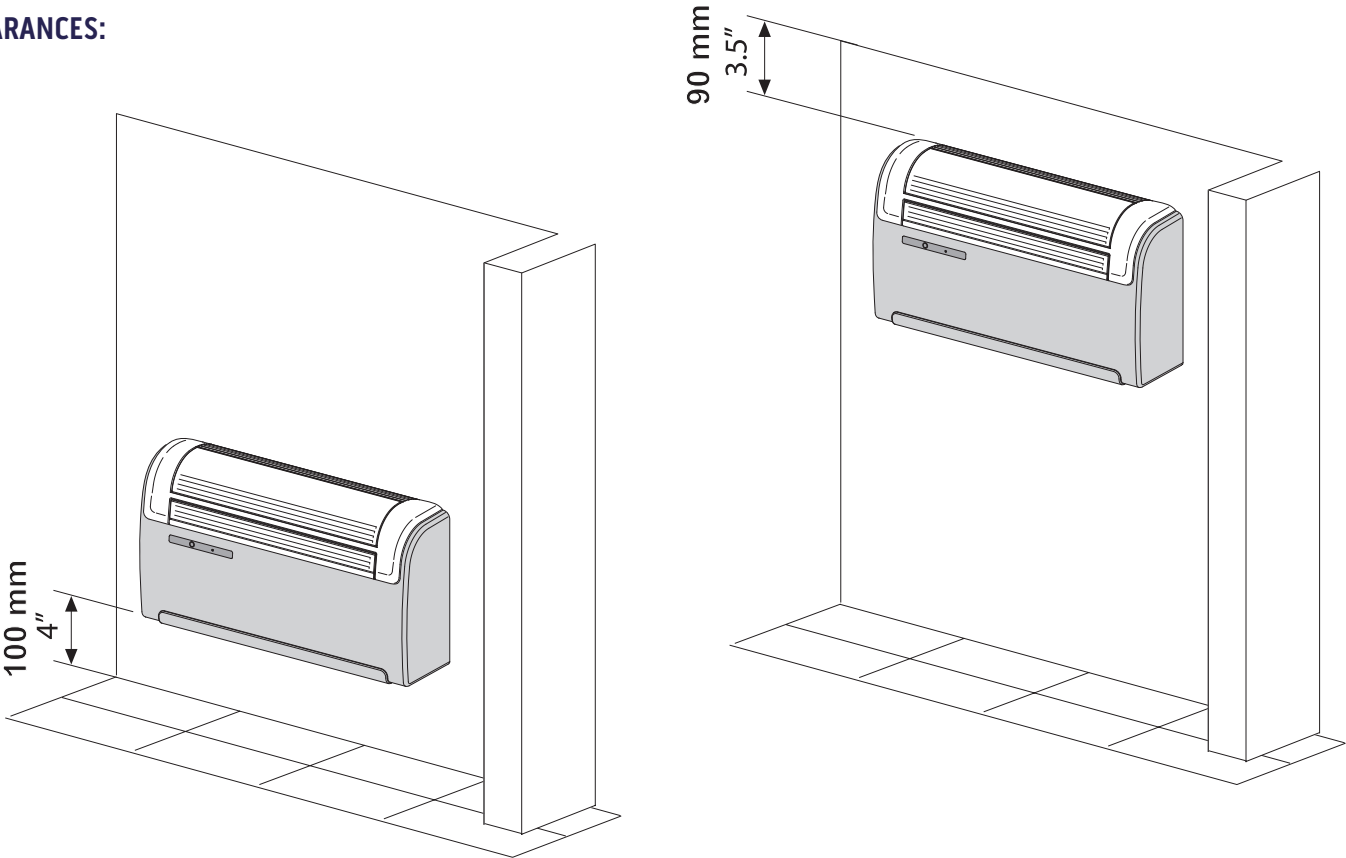
DIMENSIONS:



Unit Dimensions

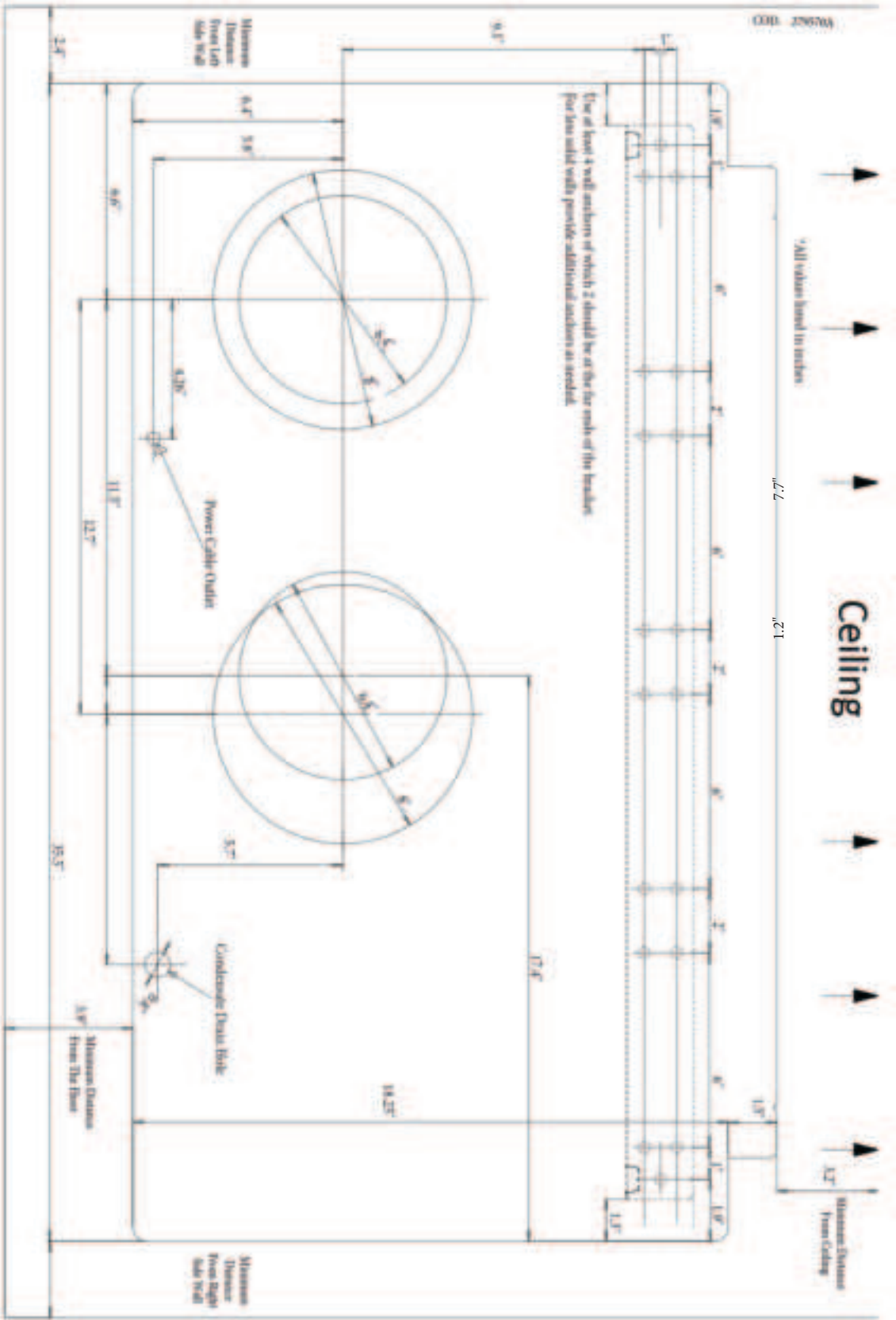
A	B	C	Weight
35.5"	9.1"	20.3"	88.2 lbs

CLEARANCES:

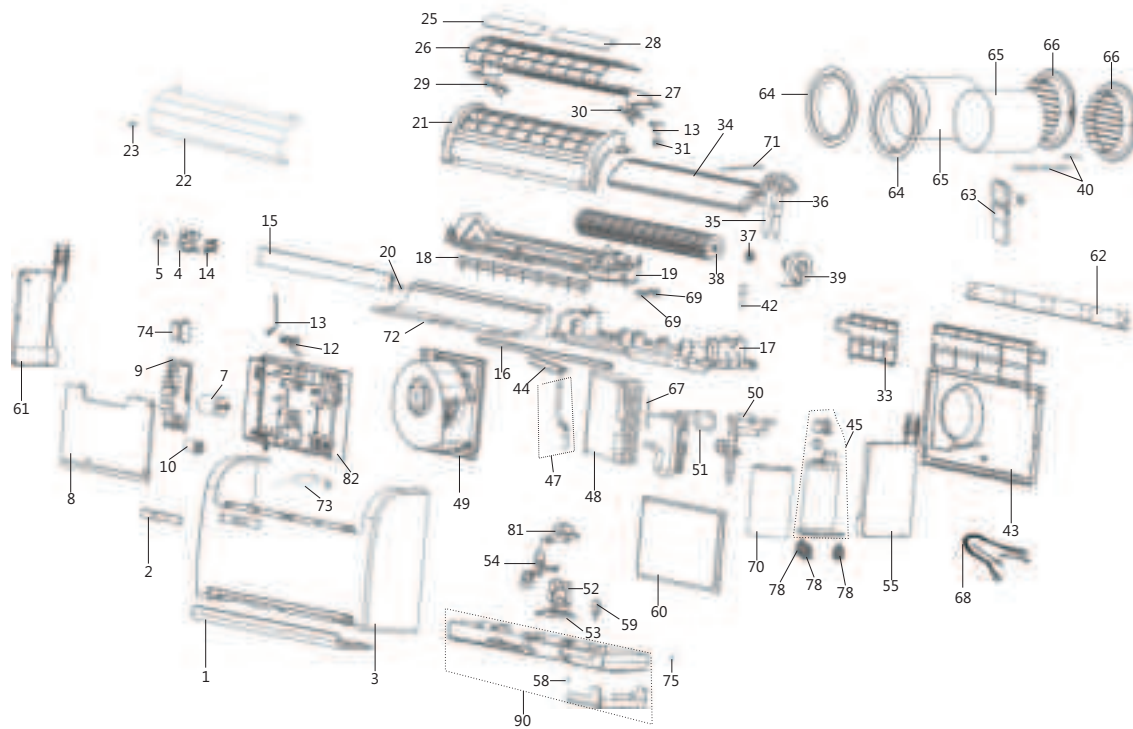


INSTALLATION TEMPLATE

MAESTRO SMART 9 HP:

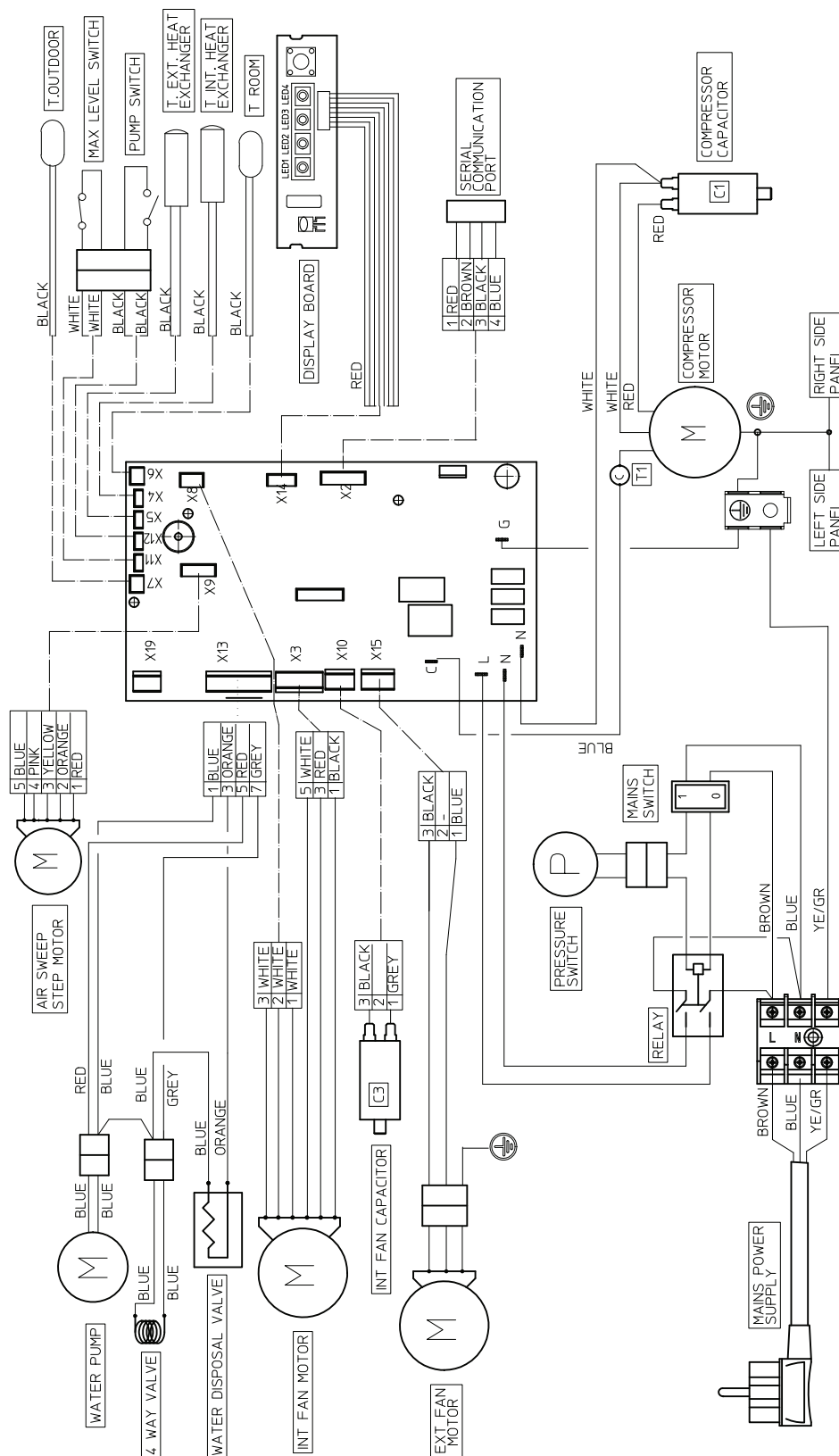


PARTS: MAESTRO SMART 9 HP



- | | | |
|--|---|--|
| 1. Lower Cover - Part #282457A | 28. Particulate Filter - Part #K0700116A | 55. Right Panel Assy - Part #594777A |
| 3. Body - Part #595212B | 29. SX Filter Saddle - Part #282454A | 58. Draining Cup - Part #242473A |
| 4. Lever Cover - Part #282446A | 30. DX Filter Saddle - Part #282455A | 59. Thermal Actuator - Part #277865A |
| 5. Step Motor - Part #276856A | 31. Probe Support - Part #K070003000A | 59. Obturator - Part #282120A |
| 7. Capacitor 50MF - Part #277877A | 33. Rear Panel Assy - Panel #594788A | 59. Obturator Cover - Part #282208B |
| 8. Electronic Cover - Part #282880A | 34. Connection 1 Pipe - Part #254587A | 60. Front Panel Assy - Part #594779B |
| 9. Electronic Board - Part #277866B | 34. Connection 2 Pipe - Part #254588A | 61. Left Panel Assy - Part #594778C |
| 10. Capacitor 3,5MF - Part #277881A | 34. Front Evaporator Heat Exchanger - Part #256536B | 62. Smart Bracket - Part #213264A |
| 12. Electronic Display - Part #276875A | 34. Condenser Coil - Part #256537B | 63. Smart Remote control (F) - Part #277820A |
| 13. Room Temp. Sensor - Part #255942A | 35. Inlet Pipes Group - Part #254585A | 63. Smart Remote control (C) - Part #276292B |
| 14. Lever - Part #282447A | 36. Outlet Pipes Group - Part #254586A | 63. Smart Remote control (black) - Part #592587B |
| 14. Air Sweep Lever - Part #282448A | 37. Fan Bearing Group - Part #L020006800A | 64. Inner Ring - Part #282465A |
| 14. Lower Motor Lever - Part #282449A | 38. Tangential Fan - Part #282452A | 65. Duct sleeve - Part #242440A |
| 14. Lower Air Sweep Lever - Part #282459A | 39. Indoor AC Motor - Part #277880A | 66. Exterior Grille - Part #594825A |
| 14. Motor Lever - Part #282460A | 40. Spring and Chain hardware - Part #599922A | 67. External Temperature Probe - Part #276878A |
| 15. Flap - Part #282443A | 42. Tube Assy - Part #594943A | 68. Compressor Cable - Part #255428A |
| 16. Upper Screw Cover - Part #282440A | 43. Rear Panel Assy - Part #595188A | 69. Cable Bushing - Part #242436A |
| 17. Upper Drain Pan - Part #282451C | 44. Slinger - Part #594765A | 70. Compressor Blanket - Part #K090002700A |
| 18. Protection Grid Narrow Pitch - Part #213258A | 45. Compressor - Part #277878A | 71. IDU Heat-Heat Exchanger Temp. Sensor - Part #276879A |
| 19. Drain Pan Mount - Part #282453C | 47. Spring-Tube Assy - Part #594886A | 72. Evaporator Fan Scroll - Part #282450A |
| 20. Male Pin - Part #281871A72 | 48. Condenser Heat Exchanger Group - Part #594772B | 73. LCDI Power Cable (Tower 30380) - Part #K160010400A |
| 21. Front Cover - Part #282438A | 49. Fan Motor 115V 50-60HZ Assy - Part #595190A | 75. Draining Discharge Cap - Part #K190000500A |
| 22. Suction Grid - Part #282470A | 50. Four Way Val Assy - Part #595265B | 78. Compressor Vibration Dampeners - Part #242472A |
| 23. Suction Grid Pin - Part #282471A | 51. Capillary Assy - Part #594767B | 81. Pump Cover - Part #282469A |
| 25. Carbon Filter - Part #K070011500A | 52. Pump - Part #277870B | 82. Electrical Box Insulator Assy - Part #595486A |
| 26. Filter Assembly - Part #594888A | 53. Pump Mount - Part #282467A | 90. Basement Assy - Part #595211A |
| 27. Upper Grid - Part #282456A | 54. Float Switch Assembly - Part #575984A | |

WIRING DIAGRAM: MAESTRO SMART 9 HP (115V) MODEL #2216

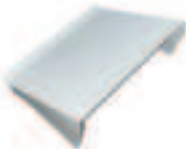




ACCESSORIES

Accessory Name	Part Number	Description
	B1018*	Designed to provide both Wi-Fi and Bluetooth accessibility. Also provides access to troubleshooting tools found on the main control board.
	B0776	Designed to completely hide a Maestro Pro inside a wall. Must be used with installation kit B0775
	B0775	Required when using recessed panel kit B0776. Often ordered in advance of the Pro unit and B0776 kit
	B0565*	Designed for use in new construction applications. This kit includes the wall mount template, mounting bracket, duct sleeves, inside rings and external grilles.
	B0564*	Designed for use in new construction applications. Includes the wall mount template, mounting bracket, duct sleeves, inside rings and external grilles
	B0919*	Required when the application will experience outdoor temperatures below 32°F (0°C). The cable prevents defrost condensation from freezing in the pan. <small>NOTE: Does not prevent drain line from freezing</small>
	B0973	Required when the application will experience outdoor temperatures below 32°F (0°C). The cable prevents defrost condensation from freezing in the pan. <small>NOTE: Does not prevent drain line from freezing</small>









*Use with either Maestro Smart or Pro

ACCESSORIES

Accessory Name	Part Number	Description
	B0753*	Contains 2 rain guards
	B0976 (Right Handed) 8.0"	Round
	B0977 (Left Handed) 8.0"	Round
	B0978 (Right Handed)	Rectangular
	B0979 (Left Handed)	Rectangular
	B0963	<p>The plenum is designed to fit inside an existing PTAC sleeve which is left in place after the PTAC is removed.</p> <p>NOTE: If the PTAC is larger than 35" (89 cm) wall repair will be required.</p>

*Use with either Maestro Smart or Pro

ACCESSORIES

Accessory Name	Part Number	Description
	Wired Thermostat B/W Wi-Fi	B1022* Wired mini thermostat Wi-Fi ready NOTE: Requires B1021 + B1028
	Wired Thermostat Color Wi-Fi	B1023* Wired color touch screen thermostat Wi-Fi ready NOTE: Requires B1021 + B1028
	Wired Thermostat B/W	B1027* Wired programmable thermostat Wi-Fi ready NOTE: Requires B1021 + B1028
	Wireless Thermostat	B00001 Battery-powered wireless thermostat desired temperature, fan speed, supply air deflector function NOTE: Requires B1021 + B1028
	BACNET thermostat	B0981* BACnet Communicating Thermostat for Single and Multi-Stage Heat Pump Operation NOTE: Requires B1021 + B1028
	Rectangular Louvered Grill	B1026* This aluminum grill can be ordered with or without a bug screen and for either 8" or 6.4" applications and it's paintable
	Square Louvered Grill	B1025* This aluminum grill can be ordered with or without a bug screen and for either 8" or 6.4" applications and it's paintable
	Winterizing Kit (8.0")	B0972 Galvanized Metal Cap - 2 per kit

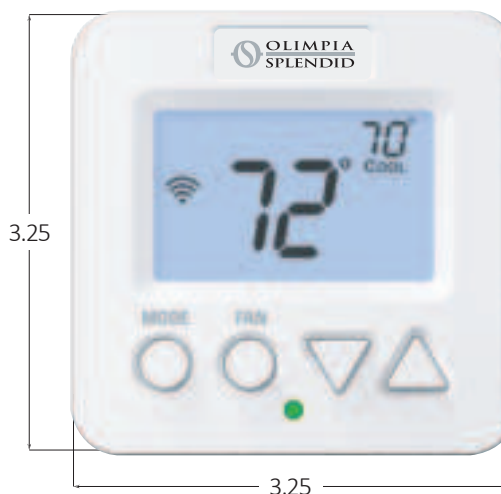
*Use with either Maestro Smart or Pro

CONTROLS OFFERING – THERMOSTATS

MODEL **B1022**
**SMART WI-FI RESIDENTIAL
7-DAY PROGRAMMABLE THERMOSTAT**

*UP TO 4 TIME PERIODS PER DAY
UP TO 2 HEAT / 2 COOL UNIVERSAL*

PROGRAMS	<ul style="list-style-type: none"> • 7-day, 5+1+1 day or 1-day programmable with up to 4 time periods per day • Geofencing • Smart recovery auto-adjusts Morning start time to meet setpoint by programmed start time • Vacation mode
STAGING	<ul style="list-style-type: none"> • Independently adjustable staging deadbands for all stages of heating and cooling (1° - 10° F) • Independently adjustable staging timers for all stages of heating and cooling (1 - 60mins) • Adjustable staging turnoffs, i.e. deenergize 2nd stage at deadband or keep active until setpoint
SECURITY	<ul style="list-style-type: none"> • Setpoint limiting • Keypad lock • Secure API (http or https)
SENSORS	<ul style="list-style-type: none"> • Control to or average a remote sensor - Baby's room or game room, etc. • Outdoor sensor ready with Hi/Low readouts for the day
ALERTS	<ul style="list-style-type: none"> • Dry contact input for twist timers, etc. or . . . • Condensate overflow warning systems – lockout compressor with display message • FDD (Equipment Fault Protection) notification • Initiate Vacation Mode
CERTS	<ul style="list-style-type: none"> • Title 24 compliant • Energy Star certified

**COMPATIBLE ACCESSORIES**

Model No.	Description
CTSWFTS	Wi-Fi Mini Sensor
LXMINIPLATE-SM	Small Wall Plate (4.62 W x 4.81 H)
LXMINIPLATE-MD	Medium Wall Plate (7.12 W x 4.37 H)
LXMINIPLATE-LG	Large Wall Plate (6.25 W x 6.17 H)
ADDWIRE	Add-A-Wire makes 4 wires work like 5



MODEL B1022

PRODUCT SPECIFICATIONS

Conventional (2H/2C) or Heat Pump (2H/2C)	
Electric Rating:	20-28VAC, 5 VA Max
Output Rating:	Y1, Y2, G – 0.8A, all others 0.4A 3A total max on all outputs
Control Range:	35° - 99° F (2° - 36° C)
Control Accuracy:	+/- 2° F (+/- 1° C)
Remote Sensor:	Wireless Wi-Fi only
Inputs:	Dry contact: FDD alerts, condensate alarms, twist timers, etc.
Outputs:	Y1, Y2, G, W1/O/B, W2
Connectivity:	optional 2.4 GHz b/g/n wifi module

COMPETITIVE CROSS-REFERENCE

Honeywell	Emerson	Braeburn	PRO1
TH6220WF TH6320WF	1F86U-42WF	7300	T701i

TERMINAL DESIGNATIONS

Terminal Designations			
R	24 VAC Return	C	24 VAC Return
G	Fan Relay	Dry Contact	Dry Contact Connections
W1/O/B	1 st Stage Heat Circuit or Reversing Valve		
W2	2 nd Stage Heat Circuit*		
Y1	1 st Stage Compressor (Cool or Heat)		
Y2	2 nd Stage Compressor (Cool or Heat)		

**SMART WI-FI RESIDENTIAL
7-DAY PROGRAMMABLE THERMOSTAT**

*UP TO 4 TIME PERIODS PER DAY
UP TO 4 HEAT / 2 COOL UNIVERSAL*

PROGRAMS	<ul style="list-style-type: none"> 7-day, 5+1+1 day or 1-day programmable with up to 4 time periods per day Geofencing Vacation mode
STAGING	<ul style="list-style-type: none"> Dual Fuel compatible with ultra-low balance point Independently adjustable staging deadbands for all stages of heating and cooling (1° - 10° F) Independently adjustable staging timers for all stages of heating and cooling (1 - 60mins) Adjustable staging turnoffs, i.e. deenergize 2nd stage at deadband or keep active until setpoint
SECURITY	<ul style="list-style-type: none"> Setpoint limiting Customizable Keypad lock Secure API (http or https)
FAN OPS	<ul style="list-style-type: none"> Programmable fan runs 5 - 60mins per hour with adjustable Start/Stop times. 7-day programmable. Smart recovery auto-adjusts Morning start time to meet setpoint by programmed start time
SENSORS	<ul style="list-style-type: none"> Wireless (Wi-Fi) Remote Sensors available Remote sensor averaging with thermostat sensor Supply Air Alerts for heating and cooling cycles
ALERTS	<ul style="list-style-type: none"> Separately tracks up to 2,000 hours of heating, aux heat, and cooling runtime FDD (Equipment Fault Protection) notification Email Alerts: Supply Air, Hi/Lo Temp, Hi/Lo Humidity, Service Filter, etc.
CERTS	<ul style="list-style-type: none"> Title 24 compliant Energy Star certified



COMPATIBLE ACCESSORIES

Model No.	Description
CTSWFTS	Wireless Wi-Fi Mini Sensor
CTSHTS	Wired Indoor/Outdoor Sensor
CTSDTS	Wired Duct Sensor
LXPLATE	CTS Wall Plate (7.0 W x 5.5 H)
ADDWIRE	Add-A-Wire makes 4 wires work like 5



MODEL B1023

PRODUCT SPECIFICATIONS

Conventional (4H/2C) or Heat Pump (4H/2C)	
Electric Rating:	20-28VAC, 5 VA Max
Output Rating:	Y1, Y2, G – 0.8A, all others 0.4A 3A total max on all outputs
Control Range:	35° - 99° F (2° - 36° C)
Control Accuracy:	+/- 2° F (+/- 1° C)
Humidity Accuracy:	+/- 10% RH from 30-70% RH, 50°-90° F
Remote or Outdoor Sensor:	(2), 10K NTC Thermistor
Inputs:	Sensor terminals: FDD (equip. fault)
Outputs:	Y1, Y2, G, W1/O/B, W2, W3
Connectivity:	integrated 2.4 GHz b/g/n wifi module

COMPETITIVE CROSS-REFERENCE

Honeywell	Emerson	Braeburn	PRO1
TH8110R	1F97-1277	6100	T855i
TH8320R	1F95-1277	6300	T905
TH8320WF	1F95-1280	6425 7320	T955 T955

TERMINAL DESIGNATIONS

Terminal Designations			
R	24 VAC Return	C	24 VAC Return
G	Fan Relay	SENSOR	Remote or Outdoor Sensor or FDD for equipment fault detection
W1/O/B	1 st Stage Heat Circuit or Reversing Valve		
W2	2 nd Stage Heat Circuit*		
W3	3 rd Stage Heat Circuit**		
Y1	1 st Stage Compressor (Cool or Heat)		
Y2	2 nd Stage Compressor (Cool or Heat)		

*3rd stage heat for heat pumps with two compressor stages

**4th stage heat for heat pumps with two compressor stages

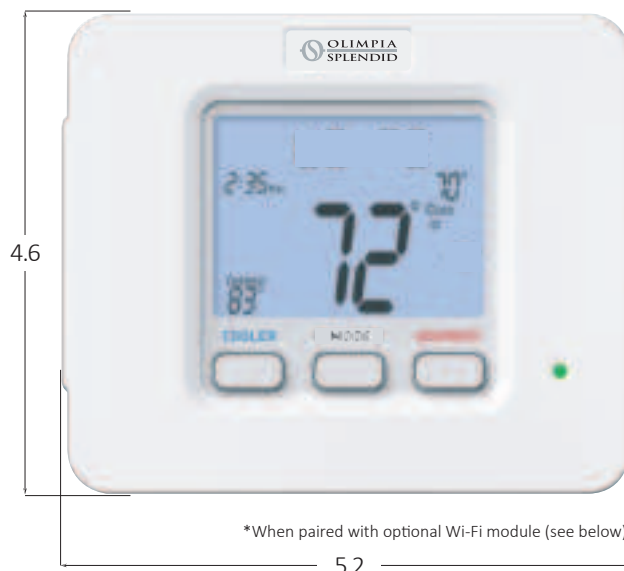


MODEL B1027

SMART WI-FI* RESIDENTIAL 7-DAY PROGRAMMABLE THERMOSTAT

UP TO 4 TIME PERIODS PER DAY
UP TO 2 HEAT / 1 COOL UNIVERSAL

PROGRAMS	<ul style="list-style-type: none"> 7-day, 5+1+1 day or 1-day programmable with up to 4 time periods per day Vacation mode Geofencing with Wi-Fi Module
STAGING	<ul style="list-style-type: none"> Adjustable first stage deadband (1° - 6° F) Fixed 2° second stage deadband
DISPLAY	<ul style="list-style-type: none"> Choice of English, Spanish, or French Bi-color LED indicates heating or cooling Adjustable backlight intensity Backlit, color coded buttons and legends
SECURITY	<ul style="list-style-type: none"> Keypad lock Secure API (http or https) with WFM module
SENSORS	<ul style="list-style-type: none"> Outdoor sensor ready with Hi/Low readouts for the day
ALERTS	<ul style="list-style-type: none"> Dry contact input for twist timers, etc. or . . . Condensate overflow warning systems – lockout compressor with display message FDD (Equipment Fault Protection) notification Initiate Vacation Mode
CERTS	<ul style="list-style-type: none"> Title 24 compliant with Wi-Fi Module Energy Star certified with Wi-Fi Module



COMPATIBLE ACCESSORIES

Model No.	Description
WFM	Wi-Fi Module
CTSHTS	Wired Outdoor Sensor
PLATE	LX Wall Plate
ADDWIRE	Add-A-Wire makes 4 wires work like 5



MODEL B1027

PRODUCT SPECIFICATIONS

Conventional (2H/1C) or Heat Pump (2H/1C)	
Electric Rating:	20-28VAC, 5 VA Max
Output Rating:	Y1, G – 0.8A, all others 0.4A 3A total max on all outputs
Control Range:	35° - 99° F (2° - 36° C)
Control Accuracy:	+/- 2° F (+/- 1° C)
Outdoor Sensor:	(2), 10K NTC Thermistor
Inputs:	Dry contact: FDD alerts, condensate alarms, twist timers, etc.
Outputs:	Y1, G, W1/O/B, W2
Connectivity:	optional 2.4 GHz b/g/n wifi module

COMPETITIVE CROSS-REFERENCE

Honeywell	Emerson	Braeburn	PRO1
TH5110D	1F83H-21PR	2020	T801
TH6110D	1F83C-11NP	3020	T805
TH6210U*	1F83H-21NP	5020	
	1F83C-11PR	5310	
	1F85-0422		

TERMINAL DESIGNATIONS

Terminal Designations			
R	24 VAC Return	C	24 VAC Return
G	Fan Relay	Dry Contact	Dry Contact Connections
W1/O/B	1 st Stage Heat Circuit or Reversing Valve	Outdoor Sensor	Outdoor Sensor Connections
W2	2 nd Stage Heat Circuit*		
Y1	1 st Stage Compressor (Cool or Heat)		

WIRLESS THERMOSTAT SPEC SHEET

PART #B00001

Wireless Universal

Up to 2 Heat 2 Cool Conventional

Up to 3 Heat 2 Cool Heat Pump

Battery or Hardwire

7 Day - 5/1/1 or Non-Programmable

This model features:

- Pre OCC Fan Purge
- Occupied/Unoccupied Programming
- Equipment Check/ Change Reminders
- 5 Year Warranty
- Humidity Control
- Light Commercial settings
- Keypad lockout
- Set dual fuel balance points (requires RZ250W)
- Connects up to 4 indoor remotes (RZ251W) for averaging or priority control
- Connect to outdoor sensor (RZ250W)
- Seperate heating and cooling swing (cycle rate) adjustments
- Heating and cooling setpoint limits
- Touchscreen



Specifications:

Frequency	916 MHZ
Application/Stages	Up to 2 heat, 2 cool conventional / Up to 3 heat, 2 cool heat pump
Programmability	7 day, 5-1-1 or Non-Programmable
Changeover	Auto or Manual
Display Range	41°F to 95°F (5°C to 35°C)
Control Range	44°F to 90°F (7°C to 32°C)
Display Accuracy	+/- 1°F
Heat Swing	Adjustable from 0.2°F to 2.0°F
Cool Swing	Adjustable from 0.2°F to 2.0°F
Terminals	Rc, Rh, C, Y, Y2, W/E, W2, G, B, O, H, D
Load Rating	1 amp per terminal, 1.5 amp maximum all terminals combined
Power Source	18 to 30 VAC, NEC Class II, 50/60 Hz for hardwire (common wire) Battery power from 2 AA Alkaline batteries
Operating Ambient	32°F to +105°F (0°C to +41°C)
Operating Humidity	90% non-condensing maximum
Mounting	Wall or Junction Box
Dimensions (Stat)	4.7"W x 4.4"H x 1.1"D (119mm W x 112mm H x 28mm D)
Dimensions (Module)	4.4" x 4.4" x 1.1"D
Warranty	5 year warranty
Switch Positions (System)	Heat / Off / Cool / Auto / Em. Heat
Switch Systems (Fan)	On / Auto
Color	White
Switch Type	Relay
Elec. Connections	Screw Terminals
Display Size	13 sq. Inches

Data Sheet - B0981



BACnet Communicating Thermostat for Single and Multi-Stage Heat Pump Operation

The BASstat series of BACnet-compliant wired or wireless communicating thermostats ensure easy integration into BACnet/IP (Wi-Fi) or BACnet MS/TP (EIA-485) networks. The BAST-321HP is suited for heating, cooling, and ventilation with binary output control for single and multi-stage heat pumps with or without 3rd stage auxiliary heat. An adaptive control algorithm saves energy and ensures comfort for the occupants. Three sensing options are available: built-in temperature sensor, input for a remote temperature sensor, or temperature network command from a Building Automation System (BMS). Reversing valve (O/B) logic is configurable. Occupancy status can be set from thermostat buttons, a wired ESI input, or over the BACnet network. Thermostat buttons are optionally lockable to prevent tampering. Digital display with graphic icons is easy to read and understand.



BACnet[™] MS/TP

Versatile BACnet Communication in Two Distinct Models

- BACnet MS/TP in B2 models with MS/TP baud rates 9.6kbps - 76.8kbps (BTL Listed)
- BACnet/IP in BW2 models with 802.11 b/g/n 2.4GHz Wi-Fi
- Both B2 and BW2 models are BACnet compliant with a B-ASC device profile

Flexible Installation

- 24VAC (+/-10%) power input
- Digital Display with graphic icons of operation, °C or °F display
- Single or Multi-stage, low voltage binary outputs for heat pump applications
- Configurable O/B reversing valve control (N.O./N.C.)
- Manual or Auto-changeover modes
- Effective run time accumulation for energy consumption calculations

- Selectable built-in temperature sensor or remote temperature sensor input (NTC Thermistor 3kΩ)
- Occupied / Unoccupied mode can be switched locally by the user, by using a separate occupancy sensor, or remotely by the BMS headend
- Configurable PID Algorithm parameters: Proportional Gain, Integral Rate, Stage Widths, Deadband
- Configurable Max Heat & Min Cool temperatures, Short Cycle Delay, Maximum Cycles Per Hour
- Stand-alone operation with BACnet setpoint and schedule supervision or optional full BMS control
- Non-volatile memory retains user settings during power loss
- Lockable user interface
- Operating Environment: 0-50°C, 5-95% RH (non-condensing)
- Mounts directly onto wall, panel, standard 65×65 mm junction box (hole pitch 60 mm) or standard 2×4 inch vertical junction box (hole pitch 83.5 mm)

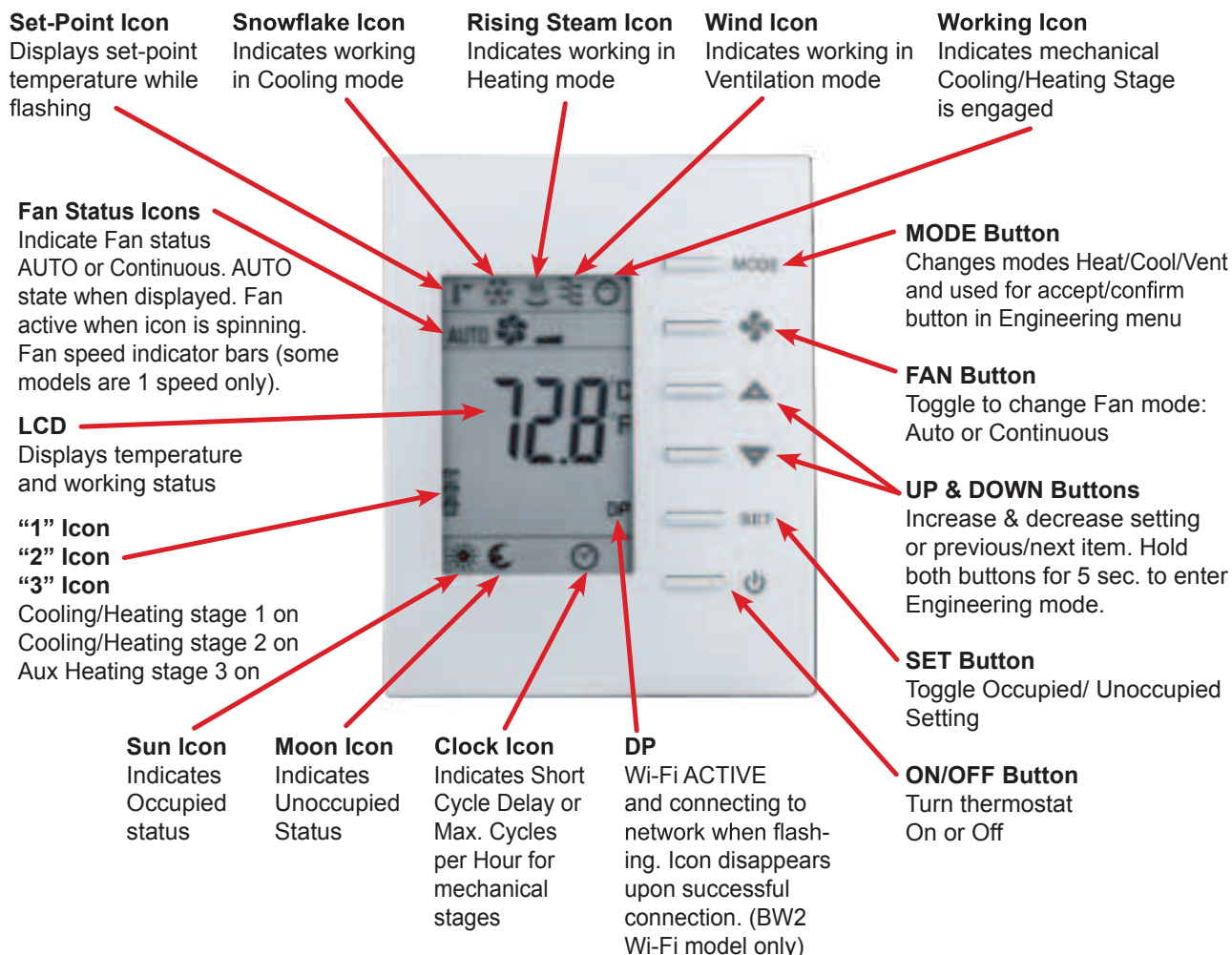
Data Sheet - B0981

BASstat – Overview

The BASstat's backlit LCD display is large and easy to read. It incorporates graphic icons to indicate current state of operation: Active Mode, Cooling stage 1 or 2, Heating stage 1, 2, or 3, Ventilation Only, Fan Active, Occupancy Status, and Clock icon to indicate Short Cycle Delay or Max Cycles per hour active waiting state.

Six buttons on the BASstat allow users to adjust temperature set points, change HVAC modes, turn the thermostat ON/OFF, and more. Pressing the Set and Up/Down buttons can manually toggle the thermostat from

occupied/unoccupied modes where BACnet occupancy command is not an option. Front panel buttons are lockable to prevent user tampering. These buttons can also be locked individually, making the BASstat suitable for applications where limited user control is desired. For greater operational flexibility, an optional remote space temperature sensor is available. Featuring an NTC type 3kΩ thermistor, the temperature sensor is directly compatible with any BASstat model.



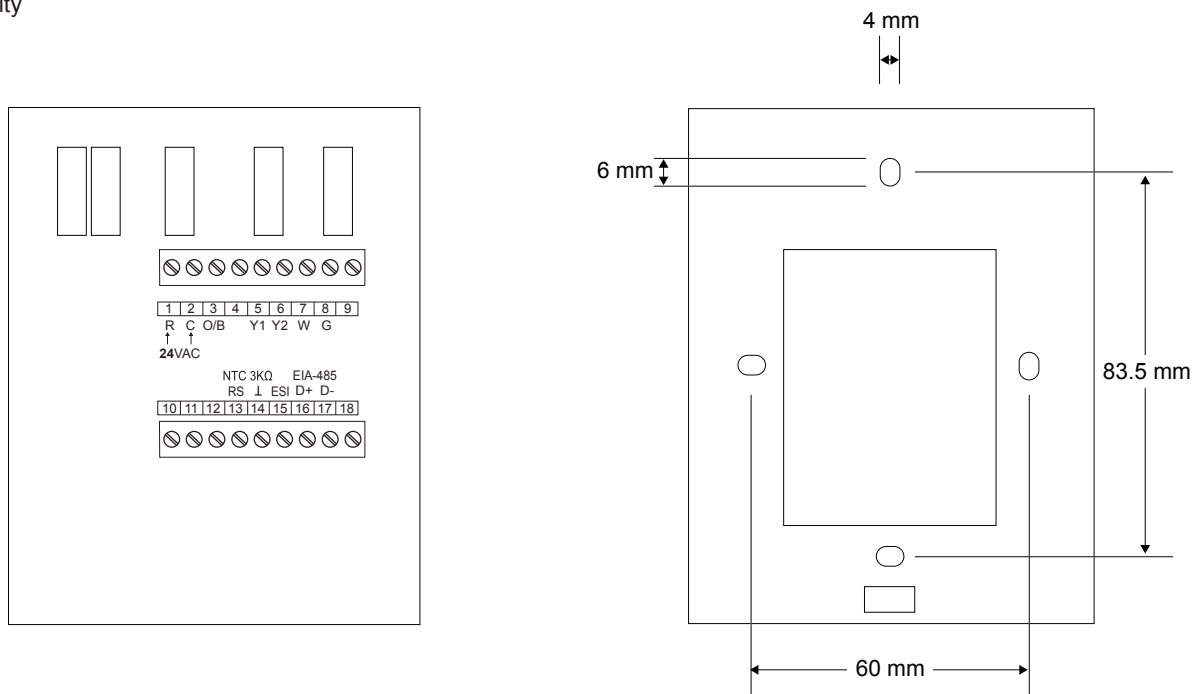
Data Sheet - B0981

Wiring Diagram

Wiring: 14 to 22 AWG wires or 1.5mm² wires.

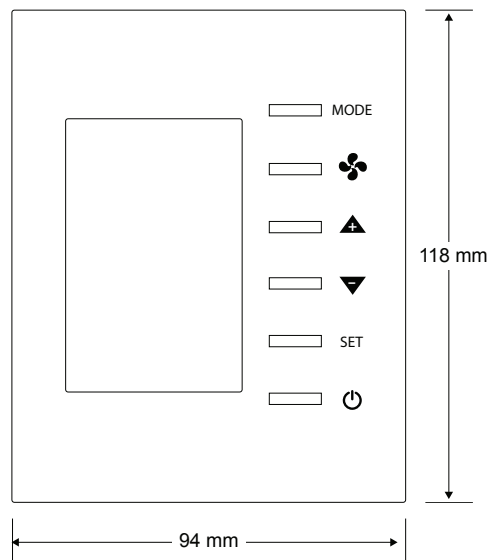
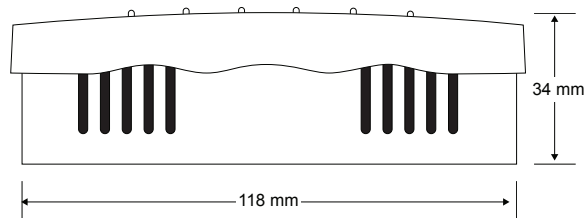
Mounts directly onto wall, panel, standard 65×65mm junction box (hole pitch 60 mm) or standard 2×4-inch vertical junction box (hole pitch 83.5mm).

EIA-485 connection to pins 16(D+) and 17(D-) applicable to B2 - BACnet MS/TP model only. BW2 model uses Wi-Fi connectivity




Dimensions (all dimensions are in mm)

Width: 94mm
Height: 118mm
Depth: 34mm



Data Sheet - B0981

Specifications

Functional	B2 model	BW2 model
Compliance	EIA-485	IEEE 802.11b, 802.11g, 802.11n (single stream) 16.5dBm@11b, 14.5dBm@11g 13.5dBm@11n Frequency range: 2400MHz~2484MHz
Protocols supported	BACnet MS/TP	BACnet/IP
Cable length	4000 ft/1200 m @76.8kbps (max)	N/A
Wi-Fi range	N/A	150ft. as defined by the standard (depending on obstructions) 54Mbps max data rate
Authentication	N/A	WEP, WPA/WPA2 PSK
Maximum Number of Devices	32 MS/TP devices (max)	N/A or depending on Wi-Fi router performance
Temperature Display Range	-10 to +60°C (14 to 140°F)	-10 to+ 60°C (14 to 140°F)
Temperature Display Resolution	0.1°F (0.1°C)	0.1°F (0.1°C)
Temperature Accuracy	±1.0°C (±1.8°F) with all outputs off	±1.0°C (±1.8°F) with all outputs off
Electrical		
Input	AC only	AC only
Voltage (V, ± 10%)	24 VAC	24 VAC
Power	5 VA	5 VA
Frequency	47–63 Hz	47–63 Hz
Environmental/Mechanical		
Operating temperature	0°C to 50°C	0°C to 50°C
Storage temperature	–10°C to +60°C	–10°C to +60°C
Relative humidity	5–95%, noncondensing	5–95%, noncondensing
Protection	IP30	IP30
Weight	0.44 lbs. (.2 kg)	0.44 lbs. (.2 kg)
Regulatory Compliance		
CE Mark; RoHS		
BW2 model Wi-Fi FCCID	P53-EMW3165-P	

ACCESSORY SUBMITTALS

(Sidewall Adapter, PTAC Retrofit Kit, Square Louvred Grill and Rectangle Louvred Grill)

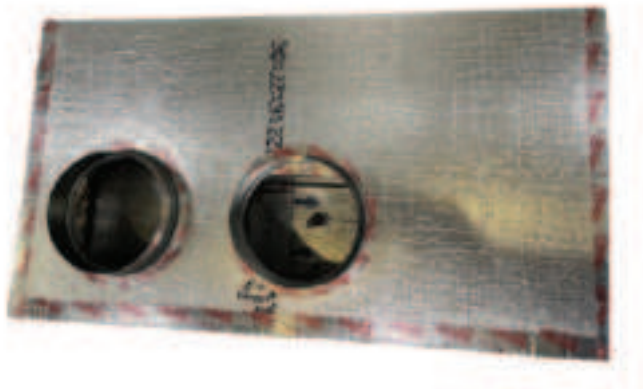


Optional bug screen

Square Louvred Grill and Rectangle Louvred Grill

Square Louvred Grill Part #: B1025

Rectangle Louvred Grill Part #: B1026



Sidewall Adapter

Part #: B0976 (Right Handed) 8.0" - Round

Part #: B0977 (Left Handed) 8.0" - Round

Part #: B0978 (Right Handed) - Rectangle

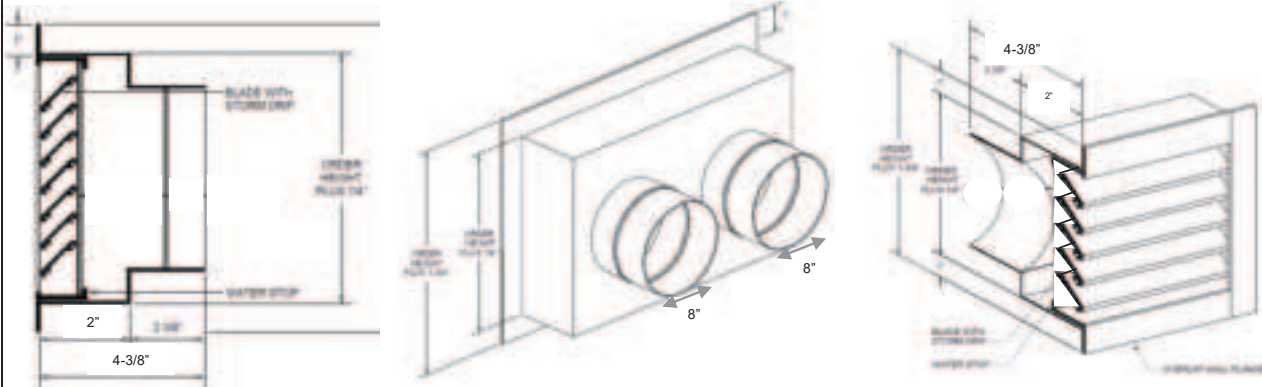
Part #: B0979 (Left Handed) - Rectangle



PTAC Retrofit Kit

Part #: B0963

LOUVRED GRILLE ACCESSORY MODEL B1026 SPEC SHEET



- **GRILLES:** Aluminum construction 1.5" deep, 1/8" thick, with 1" Outer Flange and 2 Connection Points
- **LOUVRES:** 1" deep @ 45° angle, 1" on center
- **TRANSITION BOX:** Galvanized steel (28 gauge) 2" deep with two 8" round collar sleeve ducts set 12-11/16" on center, pitched with 3/4" bend on bottom and no divider
- **DIMENSIONS:** Opening size: 23" Wide x 10-1/4" High; Overall: 24-3/8" Wide x 11-5/8" High

PROJECT NAME: _____

JOB LOCATION: _____

REP/DISTRIBUTOR: _____

ARCHITECT/ENGINEER: _____

MECHANICAL CONTRACTOR: _____

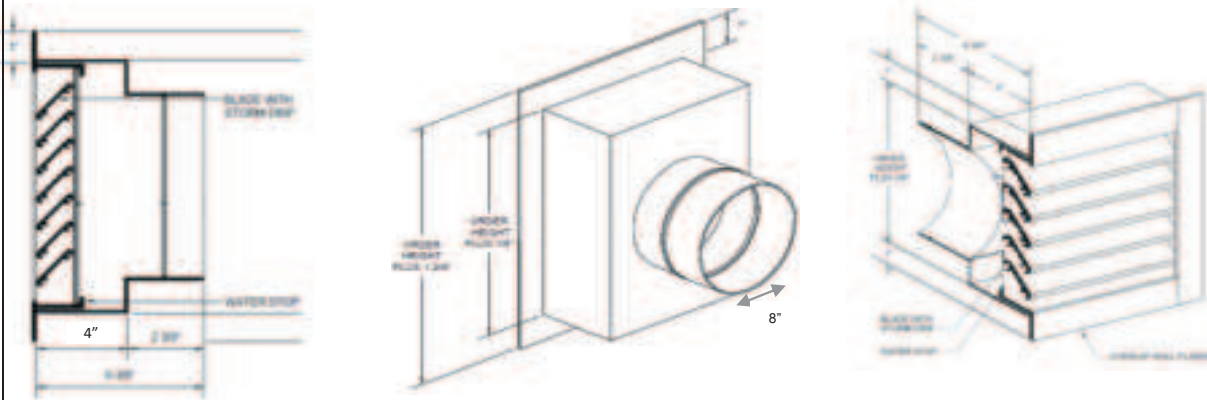
DATE: _____



OLIMPIA SPLENDID USA
Ph: (951) 534-8901
sales@olimpiaspplendidusa.com
www.olimpiaspplendidusa.com

NOTES:

LOUVRED GRILLE ACCESSORY MODEL B1025 SPEC SHEET



- **GRILLES:** Aluminum construction 1.5" deep, 1/8" thick, with 1" Outer Flange and 1 Connection Point
- **LOUVRES:** 1" deep @ 45° angle, 1" on center
- **TRANSITION BOX:** Galvanized steel (28 gauge) 2" deep with one 8" round collar sleeve ducts, pitched with 3/4" bend on bottom
- **DIMENSIONS:** Opening size: 10" Wide x 10-1/4" High; Overall: 11-3/8" Wide x 11-5/8" High

PROJECT NAME: _____

JOB LOCATION: _____

REP/DISTRIBUTOR: _____

ARCHITECT/ENGINEER: _____

MECHANICAL CONTRACTOR: _____

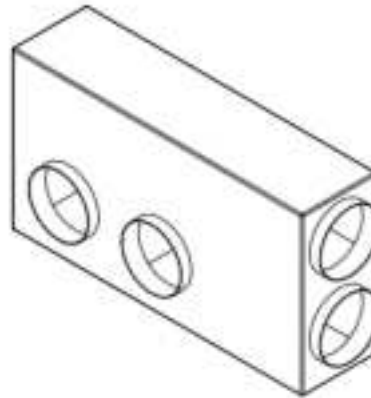
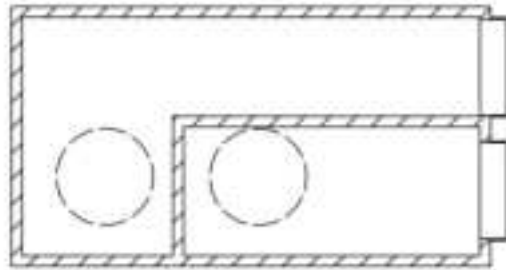
DATE: _____



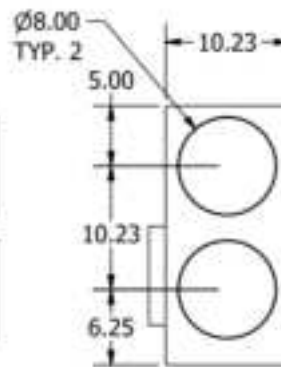
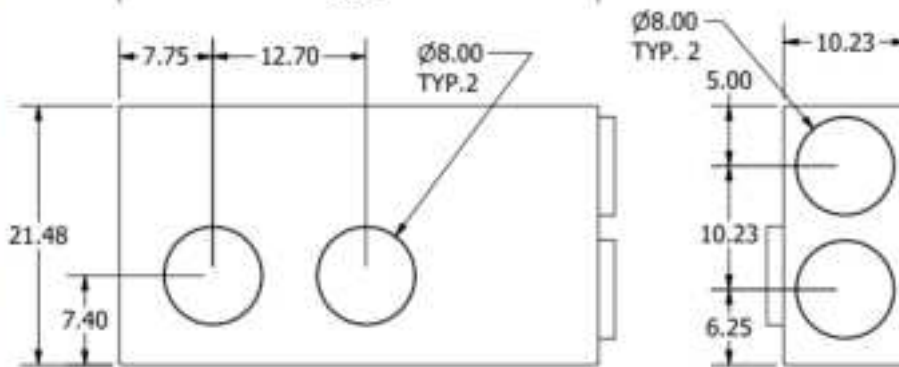
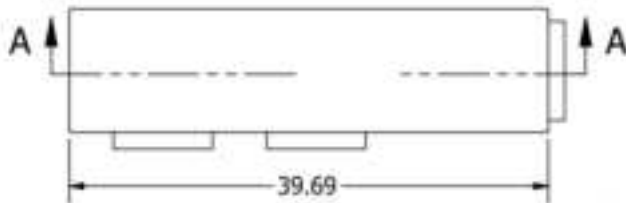
OLIMPIA SPLENDID USA
Ph: (951) 534-8901
sales@olimpiaspplendidusa.com
www.olimpiaspplendidusa.com

NOTES:

SIDE WALL ADAPTER SUBMITTAL B0976 (Right Handed shown) 8" Round



SECTION A-A
SCALE 1/12



PART # B0976

PART DESCRIPTION
RIGHT HANDED SIDE WALL
MODELS USED: 1925 & 2234 & 2283 REV. LEVEL
SEE DATE

MATERIAL/ ALLI
RS

PPF. PROCESS
FAB

CONFIGURATION
ASSEMBLY

DRAWING INFORMATION

PAGE NUMBER
PAGE 1 OF 1

DESIGN BY
DWM

DRAWING DATE
2022/9/16

SHEET PRINT SIZE
11X8.5

SCALE
1/12

GENERAL

UNLESS OTHERWISE SPECIFIED
.0 +/- .0625
.00 +/- .032
.000 +/- .015
ANGLE +/- 2 DEG
RADIUS +/- 20%
CHAMFER +/- 20%

THIRD
ANGLE
PROJECTION

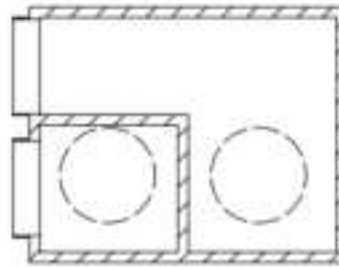
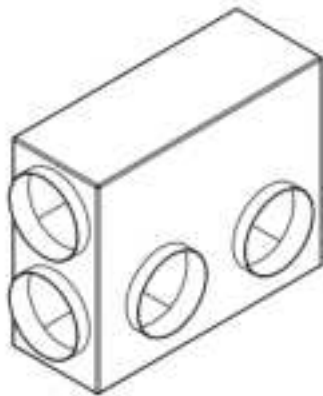
MEASURING
SYSTEM

INCH

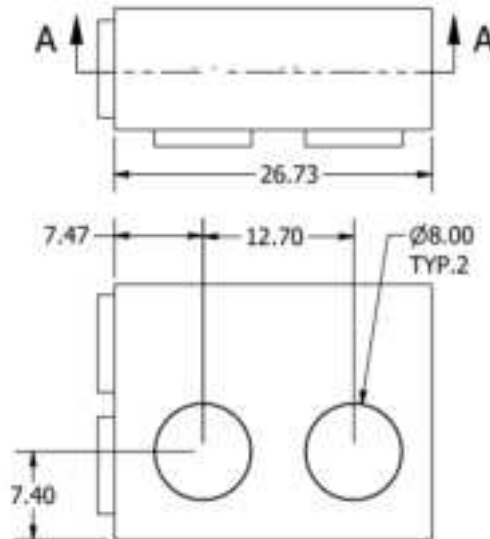
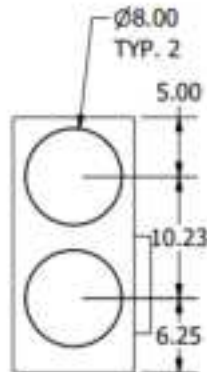
MAESTRO
With no outdoor unit

SIDE WALL ADAPTER SUBMITTAL

B0977 (Left Handed shown) 8" Round



SECTION A-A
SCALE 1/12



PART # B0977

PART DESCRIPTION
LEFT HANDED SIDE WALL

MODELS USED: 1025 & 2234 & 2283 REV. LEVEL: SEE DATE

MATERIAL: ALUM
R6

WFG. PROCESS
FAB

CONFIGURATION
ASSEMBLY

DRAWING INFORMATION

PAGE NUMBER
PAGE 1 OF 1

DESIGN BY
DWM

DRAWING DATE
2023/5/1

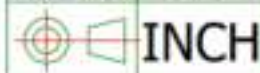
SHEET PRINT SIZE
11X8.5

SCALE
1/12

GENERAL

UNLESS OTHERWISE SPECIFIED
.0 +/- .0625
.00 +/- .032
.008 +/- .015
ANGLE +/- 2 DEG.
RADIUS +/- 20%
CHAMFER +/- 20%

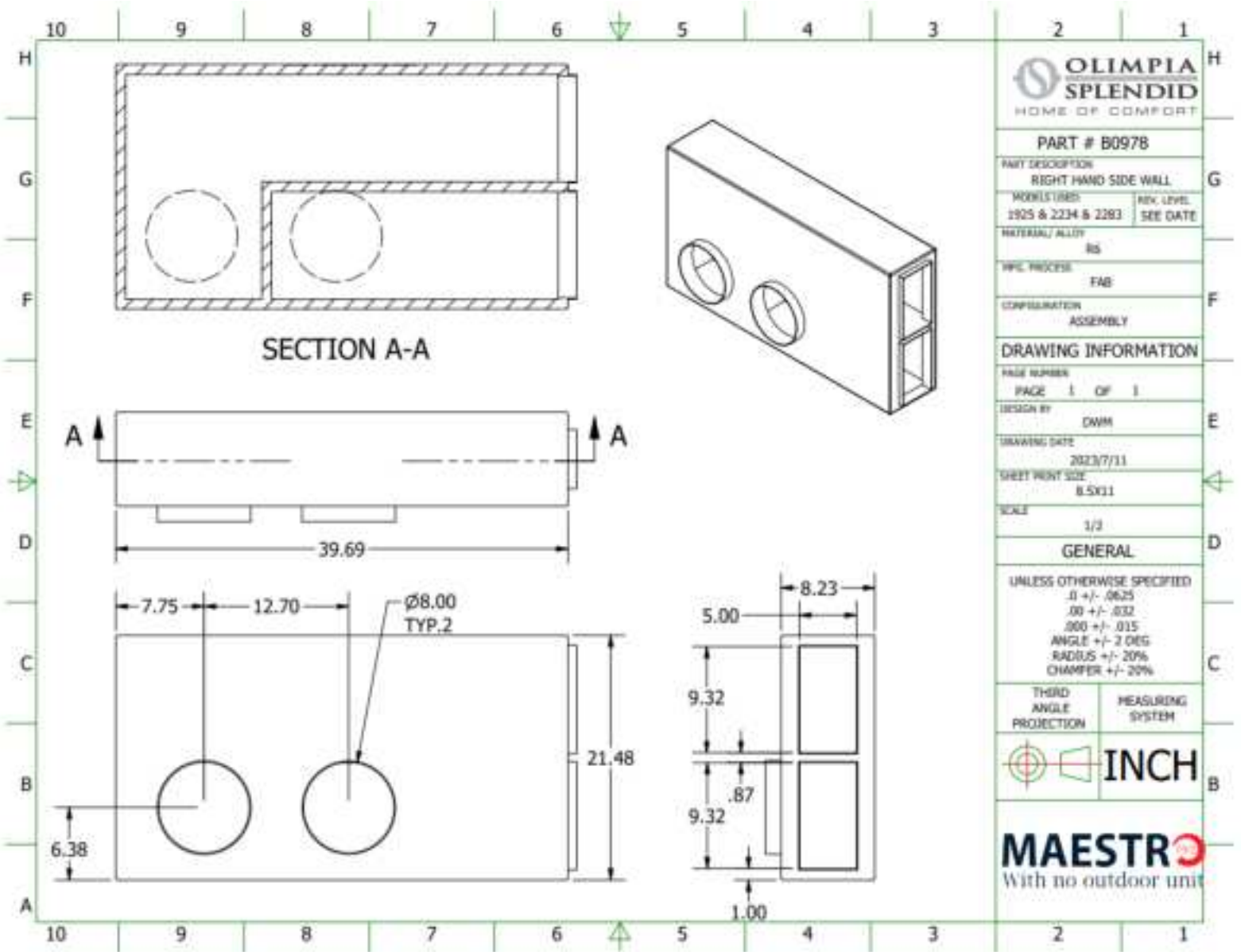
THIRD ANGLE PROJECTION
MEASURING SYSTEM



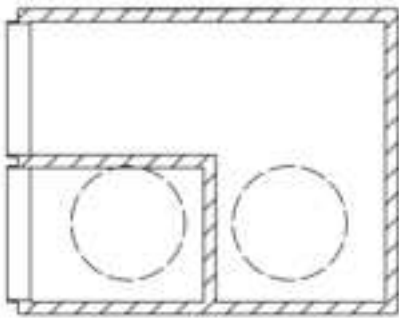
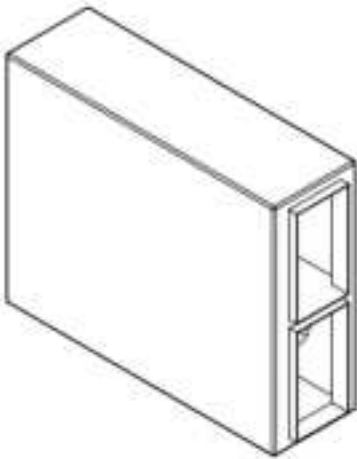
INCH

MAESTRO
With no outdoor unit

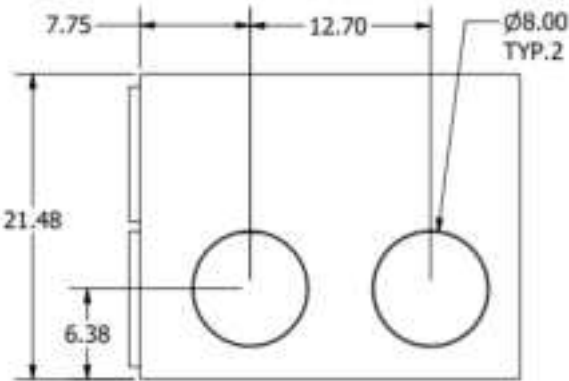
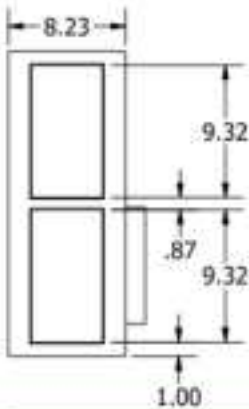
SIDE WALL ADAPTER SUBMITTAL
B0978 (Right Handed shown) Rectangle



SIDE WALL ADAPTER SUBMITTAL
B0978 (Left Handed shown) Rectangle



SECTION B-B



PART # B0979

PART DESCRIPTION
LEFT HAND SIDEWALL

REV. LEVEL
1925 & 2234 & 2283 SEE DATE

MATERIAL/ALLOY
R6

MFG. PROCESS
FAB

CONFIGURATION
ASSEMBLY

DRAWING INFORMATION

PAGE NUMBER
PAGE 1 OF 1

DESIGN BY
DWH

DRAWING DATE
2023/7/11

SHEET PRINT SIZE
8.5X11

SCALE
1/10

GENERAL

UNLESS OTHERWISE SPECIFIED
.0 +/- .0625
.00 +/- .032
.000 +/- .015
ANGLE +/- 2 DEG
RADIUS +/- 20%
CHAMFER +/- 20%

THIRD
ANGLE
PROJECTION

MEASURING
SYSTEM

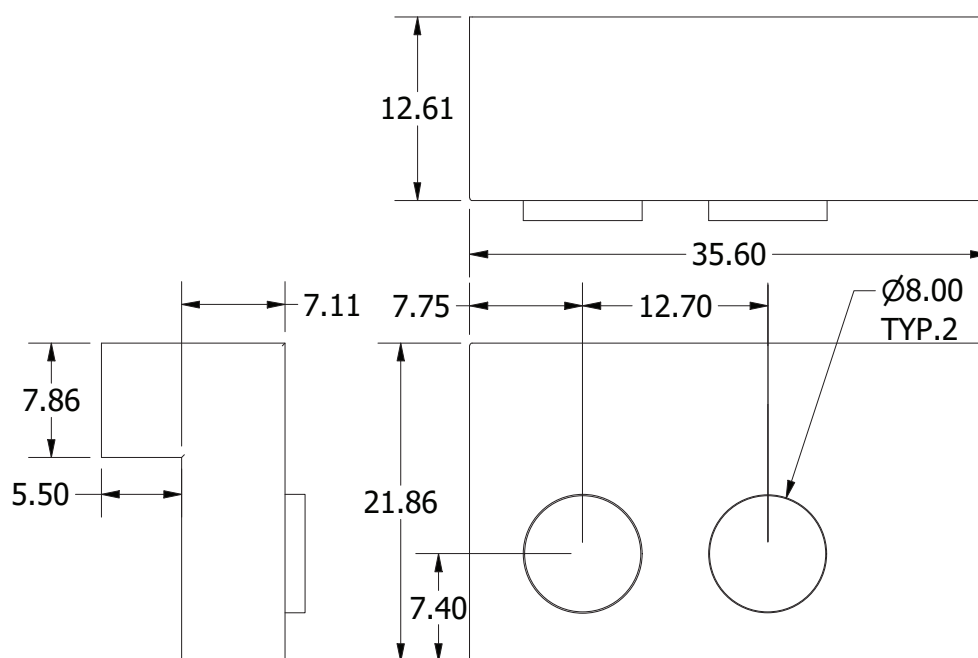
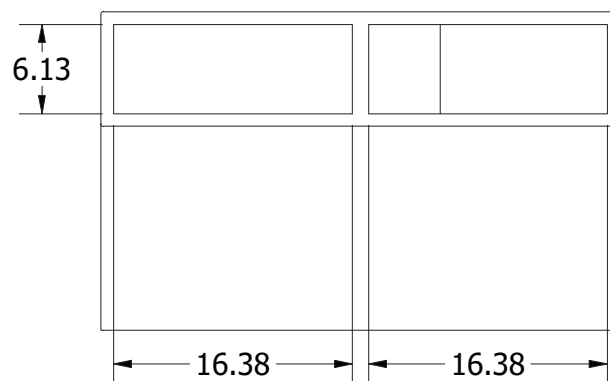
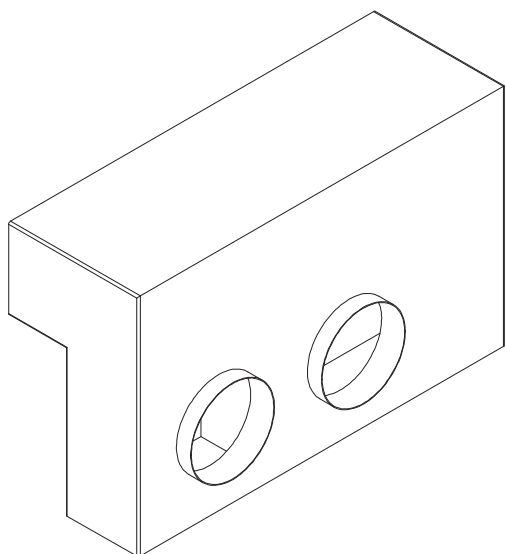


INCH

MAESTRO
With no outdoor unit

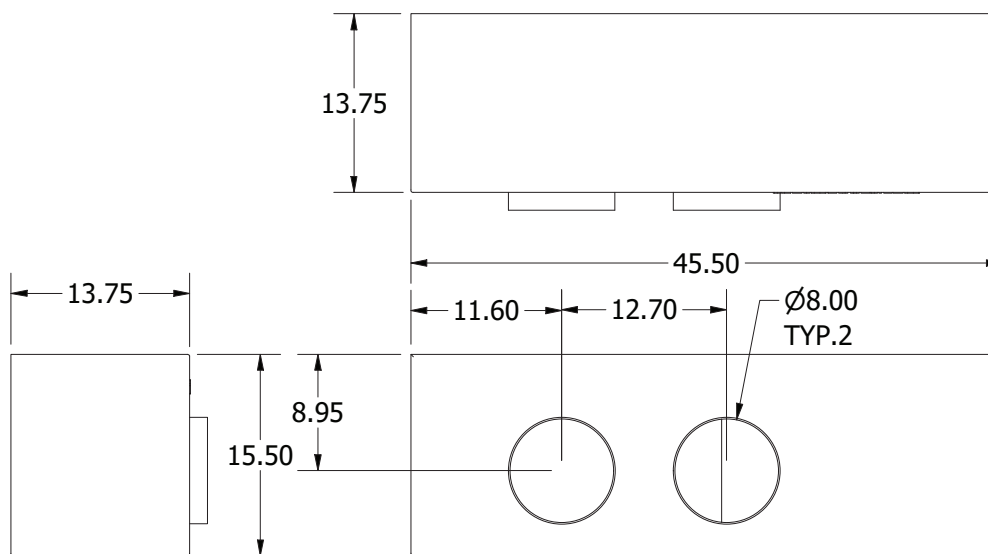
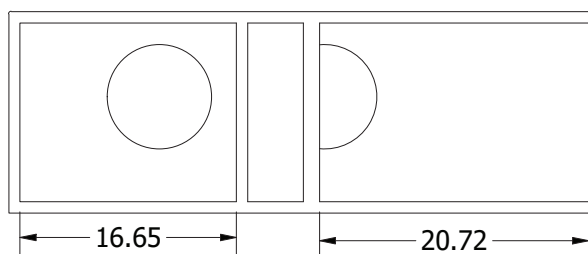
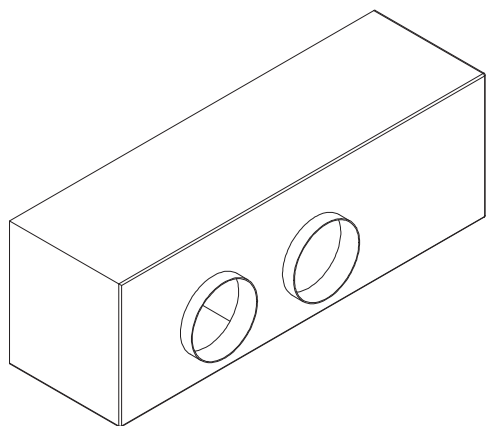
WINDOW SILL ADAPTER

B0974

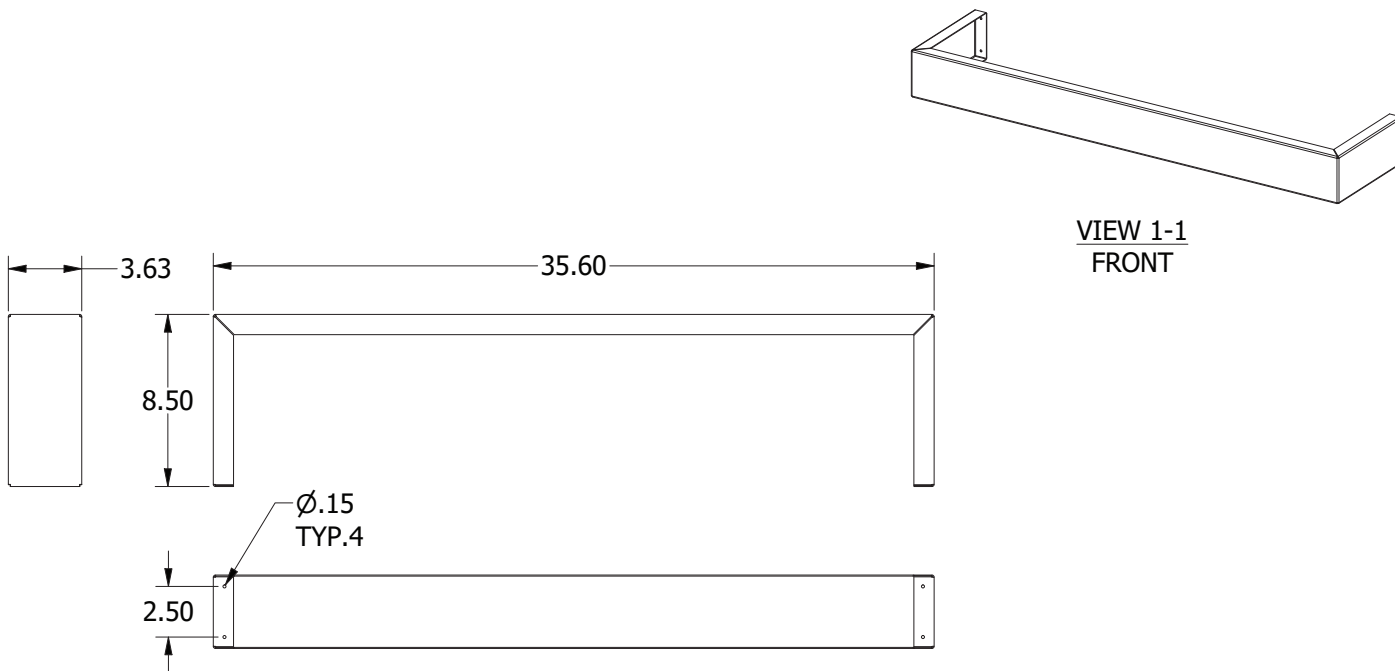


PTAC RETROFIT KIT

B0963



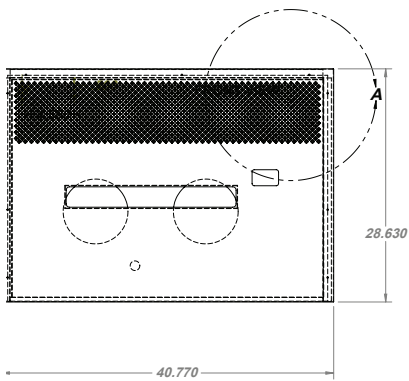
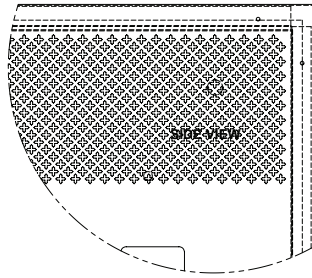
SUB BASE



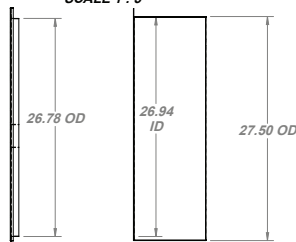
RECESSED PANEL KIT AND INSTALLATION HOUSING

Maestro Pro Series - Model Number #1925, #2234, #2283.

Part Numbers - B0775 & B0776

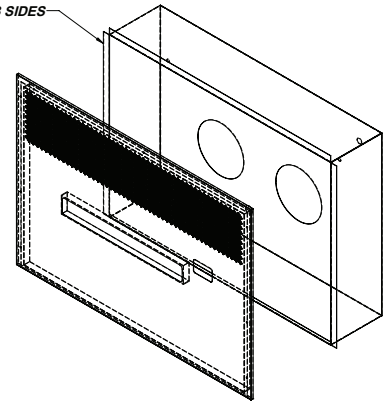


DETAIL A
SCALE 1 : 5



3D VIEW

1.1" FLG 3 SIDES



SOUND PRESSURE



DECIBEL	Noise source
130	Plane taking off
120	Siren
110	Rock Concert
100	Freight Train
90	Street traffic
80	Alarm Clock
70	Telephone
60	Noisy Office
50	Talking
34/43	Maestro Pro
10/20	Rustling Leaves

SOUND TRANSMISSION

Sound Transmission Class (STC) 36 dB(A)
Outdoor to Indoor Transmission Class (OITC) 25 dB(A)

CERTIFICATIONS

California Energy Commissions (CEC)



CALIFORNIA

ENERGY COMMISSION

[HOME](#)
[APPLICATIONS](#)
[ACCT MGMT](#)
[SEARCH](#)

Compare Appliances - Room Air Co. & Heat Pumps

Cancel

Below are the appliances you have selected to compare. Click the cancel button to return to the search results.

Model Number	2029	01625	2263	2234
Manufacturer	Olimpia Splendid USA	Olimpia Splendid USA	Olimpia Splendid USA	Olimpia Splendid USA
Brand	Maestro	Maestro	Maestro	Maestro
Voltage	115	115	230	230
Phase	1	1	1	1
Room AC Type	Room Air Conditioning Heat Pump	Room Air Conditioning Heat Pump	Room Air Conditioning Heat Pump	Room Air Conditioning Heat Pump
Lowers?	False	False	False	False
Heating Capable	Heat Pump Only	Heat Pump Only	Heat Pump Only	Both Heat Pump & Elec. Resistance Heating
Refrigerant Type	Ozone-Depleting	Ozone-Depleting	Ozone-Depleting	Ozone-Depleting
Cooling Output BTUH	9200	11600	11600	10700
Cooling Input Watts	930	800	800	710
Combined Energy Efficiency Ratio (CEER)	9.3	9.7	9.7	13
CEERSid	9.3	9.3	9.3	9.3
Standby and Off Mode Annual Energy Consumption	6	6	6	6
Heat Pump Heating Output BTUH	8500	10600	10600	10200
Heat Pump Heating Input Watts	660	825	825	800
Heating Output (non-HP) BTUH				
Heating Input (non-HP) Watts				
Regulatory Status	Federally-Regulated Consumer Product	Federally-Regulated Consumer Product	Federally-Regulated Consumer Product	Federally-Regulated Consumer Product
Add Date	11/18/2022	11/18/2022	11/18/2022	11/18/2022
Reference Number				

ETL CERTIFICATION



AUTHORIZATION TO MARK

This authorizes the application of the Certification Mark(s) shown below to the models described in the Product(s) Covered section when made in accordance with the conditions set forth in the Certification Agreement and Listing Report. This authorization also applies to multiple listed model(s) identified on the correlation page of the Listing Report.

This document is the property of Intertek Testing Services and is not transferable. The certification mark(s) may be applied only at the location of the Party Authorized To Apply Mark.

Applicant: OLIMPIA SPLENDID S.P.A.
Address: Via Industriale 1/3
 25060 CELLATICA (BS)
Country: Italy
Contact: Mr. Patrick LO PRESTI
Phone: (+39) 030 319 5235
FAX: (+39) 030 373 1882
Email: p.lopresti@olimpiasplesid.it

Manufacturer: OLIMPIA SPLENDID S.P.A.
Address: Via Industriale 1/3
 25060 CELLATICA (BS)
Country: Italy
Contact: Mr. Patrick LO PRESTI
Phone: (+39) 030 319 5235
FAX: (+39) 030 373 1882
Email: p.lopresti@olimpiasplesid.it

Party Authorized To Apply Mark: Same as Manufacturer
Report Issuing Office: INTERTEK ITALIA SPA - Campoformido (Udine) - Italy

Control Number: 5009604

Authorized by:

for L. Matthew Snyder, Certification Manager



This document supersedes all previous Authorizations to Mark for the noted Report Number.

This Authorization to Mark is for the exclusive use of Intertek's Client and is provided pursuant to the Certification Agreement between Intertek and its Client. Intertek's responsibility and liability are limited to the terms and conditions of this agreement. Intertek assumes no liability to any party, other than the Client in accordance with the agreement, for any loss, expense or damage occasioned by the use of this Authorization to Mark. Only the Client is authorized to permit copying or distribution of this Authorization to Mark and then only in its entirety. Use of Intertek's Certification mark is restricted to the conditions set out in the agreement and in this Authorization to Mark. Any further use of the Intertek name for the sale or advertisement of the tested material, product or service must first be approved in writing by Intertek. Initial Factory Assessments and Follow-up Services are for the purpose of ensuring appropriate design of the Certification mark in accordance with the agreement. They are not for the purpose of production quality control and do not relieve the Client of their obligations in this regard.

Intertek Testing Services NA Inc.
 545 East Algonquin Road, Arlington Heights, IL 60005
 Telephone 800-345-3851 or 847-439-5667 Fax 312-263-1672

Standard(s):	Safety Of Household And Similar Electrical Appliances, Part 1: General Requirements [UL 60335-1:2016 Ed.6]
	Household And Similar Electrical Appliances - Safety - Part 2-40: Particular Requirements For Electrical Heat Pumps, Air-Conditioners And Dehumidifiers [UL 60335-2-40:2017 Ed.2]
	Safety Of Household And Similar Appliances - Part 1: General Requirements [CSA C22.2#60335-1:2016 Ed.2]
	Household And Similar Electrical Appliances - Safety - Part 2-40: Particular Requirements For Electrical Heat Pumps, Air-Conditioners And Dehumidifiers [CSA C22.2#60335-2-40:2017 Ed.2]
Product:	Room Air Conditioners
Brand Name:	OLIMPIA SPLENDID
Models:	MAESTRO PRO INVERTER 12 HP MAESTRO PRO INVERTER 12 AC

ETL CERTIFICATION



AUTHORIZATION TO MARK

This authorizes the application of the Certification Mark(s) shown below to the models described in the Product(s) Covered section when made in accordance with the conditions set forth in the Certification Agreement and Listing Report. This authorization also applies to multiple listee model(s) identified on the correlation page of the Listing Report.

This document is the property of Intertek Testing Services and is not transferable. The certification mark(s) may be applied only at the location of the Party Authorized To Apply Mark.

Applicant: OLIMPIA SPLENDID S.P.A.
Address: Via Industriale 1/3
 25060 CELLATICA (BS)

Manufacturer: OLIMPIA SPLENDID S.P.A.
Address: Via Industriale 1/3
 25060 CELLATICA (BS)

Country: Italy

Country: Italy

Party Authorized To Apply Mark: Same as Manufacturer
Report Issuing Office: Intertek Italia SpA

Control Number: 5009604

Authorized by:

for L. Matthew Snyder, Certification Manager



This document supersedes all previous Authorizations to Mark for the noted Report Number.

This Authorization to Mark is for the exclusive use of Intertek's Client and is provided pursuant to the Certification agreement between Intertek and its Client. Intertek's responsibility and liability are limited to the terms and conditions of the agreement. Intertek assumes no liability to any party, other than to the Client in accordance with the agreement, for any loss, expense or damage occasioned by the use of this Authorization to Mark. Only the Client is authorized to permit copying or distribution of this Authorization to Mark and then only in its entirety. Use of Intertek's Certification mark is restricted to the conditions laid out in the agreement and in this Authorization to Mark. Any further use of the Intertek name for the sale or advertisement of the tested material, product or service must first be approved in writing by Intertek. Initial Factory Assessments and Follow up Services are for the purpose of assuring appropriate usage of the Certification mark in accordance with the agreement, they are not for the purposes of production quality control and do not relieve the Client of their obligations in this respect.

Intertek Testing Services NA Inc.
 545 East Algonquin Road, Arlington Heights, IL 60005
 Telephone 800-345-3851 or 847-439-5667 Fax 312-283-1672

Standard(s): Household And Similar Electrical Appliances, Part 1: General Requirements [UL 60335-1:2016 Ed.6]	
Household and Similar Electrical Appliances - Part 2 - 40: Particular Requirements for Electrical Heat Pumps, Air-Conditioners, and Dehumidifiers [UL 60335-2-40:2019 Ed.3]	
Safety of Household and Similar Appliances - Part 1: General Requirements [CSA C22.2#60335-1:2016 Ed.2]	
Household and Similar Electrical Appliances - Safety - Part 2-40: Particular Requirements for Electrical Heat Pumps, Air-Conditioners and Dehumidifiers [CSA C22.2#60335-2-40:2019 Ed.3]	
Product:	Room Air Conditioners
Brand Name:	OLIMPIA SPLENDID
Models:	MAESTRO PRO INVERTER 12HP RVU, MAESTRO PRO INVERTER 12HP RVUX.

ETL CERTIFICATION



AUTHORIZATION TO MARK

This authorizes the application of the Certification Mark(s) shown below to the models described in the Product(s) Covered section when made in accordance with the conditions set forth in the Certification Agreement and Listing Report. This authorization also applies to multiple listee model(s) identified on the correlation page of the Listing Report.

This document is the property of Intertek Testing Services and is not transferable. The certification mark(s) may be applied only at the location of the Party Authorized To Apply Mark.

Applicant: OLIMPIA SPLENDID S.P.A.
Address: Via Industriale 1/3
 25060 CELLATICA (BS)
Country: Italy
Contact: Mr. Patrick LO PRESTI
Phone: (+39) 030 319 5235
FAX: (+39) 030 373 1882
Email: p.lopresti@olimpiasplesndid.it

Manufacturer: OLIMPIA SPLENDID S.P.A.
Address: Via Industriale 1/3
 25060 CELLATICA (BS)
Country: Italy
Contact: Mr. Patrick LO PRESTI
Phone: (+39) 030 319 5235
FAX: (+39) 030 373 1882
Email: p.lopresti@olimpiasplesndid.it

Party Authorized To Apply Mark: Same as Manufacturer
Report Issuing Office: INTERTEK ITALIA SPA - Campofornido (Udine) - Italy

Control Number: 5009604


Authorized by: 
 for L. Matthew Snyder, Certification Manager



This document supersedes all previous Authorizations to Mark for the noted Report Number.

This Authorization to Mark is for the exclusive use of Intertek's Client and is provided pursuant to the Certification agreement between Intertek and its Client. Intertek's responsibility and liability are limited to the terms and conditions of the agreement. Intertek assumes no liability to any party, other than to the Client in accordance with the agreement, for any loss, expense or damage occasioned by the use of this Authorization to Mark. Only the Client is authorized to permit copying or distribution of this Authorization to Mark and then only in its entirety. Use of Intertek's Certification mark is restricted to the conditions laid out in the agreement and in this Authorization to Mark. Any further use of the Intertek name for the sale or advertisement of the tested material, product or service must first be approved in writing by Intertek. Initial Factory Assessments and Follow up Services are for the purpose of assuring appropriate usage of the Certification mark in accordance with the agreement, they are not for the purposes of production quality control and do not relieve the Client of their obligations in this respect.

Intertek Testing Services NA Inc.
 545 East Algonquin Road, Arlington Heights, IL 60005
 Telephone 800-345-3851 or 847-439-5667 Fax 312-283-1672

Standard(s):	Household And Similar Electrical Appliances, Part 1: General Requirements [UL 60335-1:2016 Ed.6] Household and Similar Electrical Appliances - Part 2-40: Particular Requirements for Electrical Heat Pumps, Air-Conditioners, and Dehumidifiers [UL 60335-2-40:2017 Ed.2] Safety of Household and Similar Appliances - Part 1: General Requirements [CSA C22.2#60335-1:2016 Ed.2] Household and Similar Electrical Appliances - Safety - Part 2-40: Particular Requirements for Electrical Heat Pumps, Air-Conditioners and Dehumidifiers [CSA C22.2#60335-2-40:2017 Ed.2]
Product:	Room Air Conditioner
Brand Name:	
Models:	MAESTRO SMART 12 HP



MAESTRO

LIMITED WARRANTY



Thank you for purchasing this Maestro unit, which is covered by a limited 7 year compressor, a 2 year parts warranty as well as a 1 year limited "No Hassle Unit Replacement Warranty," where should the compressor fail or there is a leak in the refrigeration circuit within the first 12 months from date of startup, we will provide a new unit (no labor allowance). All shipping expenses of the new Maestro unit or replacement warranty parts are the responsibility of the distributor/rep or end user.

The warranty period mentioned above are only valid if the unit is registered online (<https://olimpiaspplendidusa.com/warranty>) within 90 days from date of startup¹. And if the unit is installed by an installer that has participated in the "mandatory" Maestro Certification training.

All units that are deemed repairable within the warranty period are to be shipped to and from a Maestro Authorized Service Center (MASC) at the owner's expense. MASC locations can be found by calling Olimpia Splendid Technical Support 1-800-408-5196. Ext 103

THIS LIMITED WARRANTY DOES NOT COVER THE FOLLOWING²:

1. Damage caused by transportation or handling.
2. Service calls to your home for delivery or pick-up, installation, instruction, replacement of house fuses, connection of house wiring or plumbing, or to correct unauthorized repairs.
3. Failure of product to perform during power failures and interruptions or inadequate electrical service.
4. Damage caused to the product by accident, vermin, lightning, winds, fire, floods, or any other acts of God.
5. Damages caused by leaky or broken water pipes, frozen water pipes, restricted drain lines, or inadequate or interrupted water supply.
6. Damages caused by inadequate supply of air.
7. Damages caused by operating the product in a corrosive environment.
8. Repairs when this product is applied in other than single/multi family households use or contrary to the instructions described in the product user manual.
9. Damage resulting from accident, alteration, misuse, abuse, or improper installation, application, repair, or maintenance. Improper repair includes the use of parts not approved or specified by Olimpia Splendid USA.
10. Normal maintenance as described in the user manual, such as cleaning or replacing filters, cleaning coils, etc.
11. Use of accessories or components that are not compatible or factory approved for this product.
12. Products with altered or removed serial numbers.
13. Changes in the appearance of the product that do not affect product performance.
14. Increases in utility costs and additional utility expenses
15. A completed data sheet, available at www.OlimpiaSplendidUSA.com, must be submitted along with the warranty claim if requesting a replacement unit due to compressor failure. Claims submitted with a missing or incomplete data sheet are subject to delays and/or warranty rejection.

DISCLAIMER OF IMPLIED WARRANTIES - LIMITATION OF REMEDIES

CUSTOMER'S SOLE AND EXCLUSIVE REMEDY UNDER THIS LIMITED WARRANTY SHALL BE PRODUCT REPAIR OR REPLACEMENT AS PROVIDED HEREIN. CLAIMS BASED ON IMPLIED WARRANTIES, INCLUDING WARRANTIES OF MERCHANTABILITY OR FITNESS FOR A PARTICULAR PURPOSE, ARE LIMITED TO ONE YEAR OR THE SHORTEST PERIOD ALLOWED BY LAW, BUT NOT LESS THAN ONE YEAR. OLIMPIA SPLENDID SHALL NOT BE LIABLE FOR CONSEQUENTIAL OR INCIDENTAL DAMAGES SUCH AS PROPERTY DAMAGE AND INCIDENTAL EXPENSES RESULTING FROM ANY BREACH OF THIS WRITTEN LIMITED WARRANTY OR ANY IMPLIED WARRANTY. SOME STATES AND PROVINCES DO NOT ALLOW THE EXCLUSION OR LIMITATION OF INCIDENTAL OR CONSEQUENTIAL DAMAGES, OR LIMITATIONS ON THE DURATION OF IMPLIED WARRANTIES, SO THESE LIMITATIONS OR EXCLUSIONS MAY NOT APPLY TO YOU. THIS WRITTEN WARRANTY GIVES YOU SPECIFIC LEGAL RIGHTS. YOU MAY ALSO HAVE OTHER RIGHTS THAT VARY FROM STATE TO STATE.

This warranty is subject to change without notice, please contact us or check our website for latest updates.

*Product Registration Information:

(THIS SECTION TO BE FILLED OUT BY INSTALLER)

Model Number: _____
Serial Number: _____
Date of Purchase: _____
Purchased from: _____
Installation Company Name: _____
Installation Company Phone: _____

Contact Information:

Olimpia Splendid USA, Inc.
870 International Parkway, Suite 120
Flower Mound, TX 75022
Sales@OlimpiaSplendidUSA.com
CustomerService@OlimpiaSplendidUSA.com
TechSupport@OlimpiaSplendidUSA.com
Technical Support: 1-800-408-5196 ext:103
www.OlimpiaSplendidUSA.com

¹ The warranty period for an unregistered unit will be 5 years for compressor, 1 year on parts and a 30 day unit replacement warranty (as outlined above).

To register your warranty, submit the above information online at: <https://olimpiaspplendidusa.com/warranty>

² The cost of repair or replacement under these excluded circumstances shall be the responsibility of the end user.



OLIMPIA
SPLENDID
HOME OF COMFORT

MAESTRO 

MAESTRO 

NOTES

THE PRESTIGIOUS ITALIAN DESIGN: THE HISTORY OF OLIMPIA SPLENDID

Since 1956, Olimpia Splendid, an Italian based company, has been designing, manufacturing and distributing heating and air conditioning products worldwide.

Our tagline, "Home of Comfort" describes our commitment to creating innovative, environmentally friendly products with a one-of-a-kind, made in Italy design. Our goal is to provide customers globally with comfort solutions where they live, work and play.



THE NORTH AMERICA SALES OFFICE

Olimpia Splendid USA, Inc.
870 International Parkway, Suite 120
Flower Mound, TX 75022, USA

www.olimpiasplendidusa.com
sales@olimpiasplendidusa.com
customerservice@olimpiasplendidusa.com
techsupport@olimpiasplendidusa.com
Technical Support: 1-800-408-5196 ext:103



For more Mastoro
product information:

