



R18XTRP10



IMPORTANT!

It is essential that you read the instructions in this manual before assembling, operating, and maintaining the product.

Subject to technical modification.

Safety, performance, and dependability have been given top priority in the design of your cordless transfer pump.

INTENDED USE

The cordless transfer pump is intended to transfer water, either dirty or clean, out of pools, ponds, or tanks. The product can be used to drain water from floods or excess rainwater during floods.

The product is intended only for home or domestic use. The product may be used indoors or outdoors.

Do not use the product for any other purpose.

GENERAL SAFETY WARNINGS

- Never allow children, persons with reduced physical, sensory, or mental capabilities or lack of experience and knowledge, or people who are unfamiliar with these instructions to use the product. Local regulations may restrict the age of the operator. Children should be adequately supervised to ensure that they do not play with the product.
- Save all warnings and instructions for future reference. Refer to them frequently, and use them to instruct others who may use the product. If you loan someone the product, also loan them these instructions to prevent misuse of the product and possible injury.
- Keep the area of operation clear of all persons, particularly small children and pets.
- Inspect the product before each use. Check for loose fasteners, etc. Make sure that all guards and handles are properly and securely attached. Replace any damaged parts before use. Check for battery pack leaks.
- Do not modify the product in any way or use parts and accessories that are not recommended by the manufacturer.
- Do not operate the product while barefoot or when wearing sandals or similar lightweight footwear. Wear protective footwear that will protect your feet and improve your footing on slippery surfaces.

- Exercise caution to avoid slipping or falling.
- Avoid inserting hands into the inlets/outlets of the product while it is turned on.
- Do not install or operate the product in an explosive environment or near flammable materials.
- Do not use the product if the switch does not turn it off. Have the switch replaced by an authorised service centre.
- Turn off the product, remove the battery pack, and allow the product to cool down. Make sure that all moving parts have come to a complete stop:
 - before servicing
 - before clearing a blockage
 - before checking, cleaning, and working on the product
 - before changing accessories
 - before leaving the product unattended
 - whenever performing maintenance
- Immediately turn off the product and remove the battery pack in the event of an accident or breakdown. Never operate the product again until it has been fully checked by an authorised service centre.

BATTERY TOOL USE AND CARE

- Recharge only with the charger specified by the manufacturer. A charger that is suitable for one type of battery pack may create a risk of fire when used with another battery pack.
- Use only battery packs intended specifically for the product. Use of any other battery packs may result in a risk of fire, electric shock, or injury to persons.
- Do not use a battery pack or product that is damaged or modified. Damaged or modified batteries may exhibit unpredictable behaviour resulting in fire, explosion, or risk of injury.
- Do not expose a battery pack or product to fire or excessive temperatures. Exposure to fire or excessive temperature above 130°C may cause explosion.
- When the battery pack is not in use, keep it away from other metal objects, like paper clips, coins, keys, nails, screws, or other small metal objects that can make a connection from one terminal to another. Shorting the battery terminals together may cause burns or a fire.

- Under abusive conditions, liquid may be ejected from the battery. Avoid contact. If contact accidentally occurs, flush with water. If liquid contacts eyes, additionally seek medical help. Liquid ejected from the battery may cause irritation or burns.

CORDLESS TRANSFER PUMP SAFETY WARNINGS

- Ensure that the battery pack is removed when installing the product.
- Ensure that all connections are leak free. Use a thread seal tape or a suitable sealant on the connection thread.
- When tightening threaded connections, do not apply excessive force that may cause damage.
- If the product needs to be moved, turn off the product first and loosen the baseplate if needed. Move the product to a suitable area and tighten the baseplate if needed. Turn on the product to resume operation.
- Do not use the product for corrosive, abrasive, explosive, or dangerous liquids. Fluids other than water can damage the product, can create a fire hazard, and could cause physical injuries to the operator.
- Do not use the product with potable water.
- Do not operate the product without liquid. Do not run the product dry.
- Do not use the product when people are in the water.
- Do not remove the hose while the product is still operating.
- Water discharged from the product may cause the ground to become wet and may cause slipping. Make sure to clean the discharged water after operating the product.
- Do not discharge water to areas with electrical or high voltage elements, active chemicals, or other objects or substances that might cause danger when mixed with water.
- Do not expose the inside of the battery compartment to rain or wet conditions. The product is only water resistant when the battery compartment is closed. Water entering the product increases the risk of electric shock.

ADDITIONAL BATTERY SAFETY WARNINGS

To reduce the risk of fire, personal injury, and product damage due to a short circuit, never immerse the product, battery pack, or charger in fluid or allow fluid to flow inside them. Corrosive or conductive fluids, such as seawater, certain industrial chemicals, and bleach or bleach-containing products, etc., can cause a short circuit.

TRANSPORTATION AND STORAGE

- Turn off the product, remove the battery pack, and allow both to cool down before storing or transporting.
- Clean the product thoroughly before storing. Store the product in a dry, well-ventilated area that is inaccessible to children. Keep the product away from corrosive agents, such as garden chemicals and de-icing salts.
- When transporting the product in a vehicle, secure it against movement or falling to prevent injury to persons or damage to the product.

TRANSPORTING LITHIUM BATTERIES

Transport the battery in accordance with local and national provisions and regulations.

Follow all special requirements on packaging and labelling when transporting batteries by a third party. Ensure that no batteries can come in contact with other batteries or conductive materials while in transport by protecting exposed connectors with insulating, nonconductive caps or tape. Do not transport batteries that are cracked or leaking. Check with the forwarding company for further advice.

MAINTENANCE

- Use only original manufacturer's replacement parts, accessories, and attachments. Failure to do so can cause possible injury, can contribute to poor performance, and may void your warranty.
- Servicing requires extreme care and knowledge and should be performed only by a qualified service technician. Have the product serviced by an authorised service centre only.
- You may make adjustments and repairs described in this manual. For other repairs, contact an authorised service centre.

- Periodically inspect the pump, hoses, and water inlet. Ensure that the hoses and water inlet are free from mud, sand, and debris.
- After each use, clean the product with a soft, dry cloth. Keep the product dry, clean, and free from oil and grease when not in use. Any part that is damaged should be properly repaired or replaced by an authorised service centre.
- Clean the filter only when there is noticeable decline of functionality.
- Bring the product to an authorised service centre to replace damaged or unreadable labels.

SYMBOLS ON THE PRODUCT



Regulatory Compliance Mark (RCM). The product meets applicable regulatory requirements.



Read and understand all instructions before operating the product. Follow all warnings and safety instructions.



Remove the battery pack before starting any work on the product.

IPX4 Ingress protection

Do not dispose of waste batteries, waste electrical and electronic equipment as unsorted municipal waste. Waste batteries and waste electrical and electronic equipment must be collected separately. Waste batteries, waste accumulators, and light sources have to be removed from the equipment. Check with your local authority or retailer for recycling advice and collection point. According to local regulations, retailers may have an obligation to take back waste batteries and waste electrical and electronic equipment free of charge. Your contribution to the reuse and recycling of waste batteries and waste electrical and electronic equipment helps to reduce the demand of raw materials. Waste batteries, in particular containing lithium, and waste electrical and electronic equipment contain valuable and recyclable materials, which can adversely impact the environment and the human health if not disposed of in an environmentally compatible manner. Delete personal data from waste equipment, if any.



SYMBOLS IN THIS MANUAL



Parts or accessories sold separately



Note



Warning

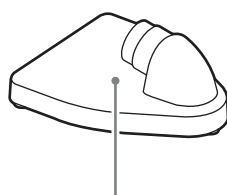
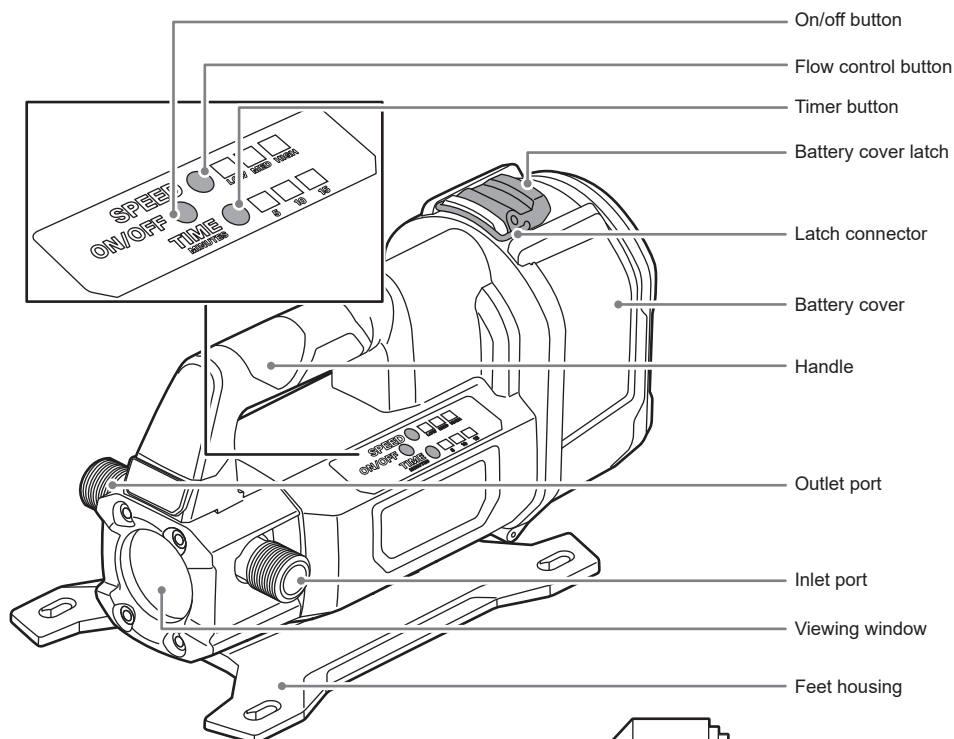


Unlock



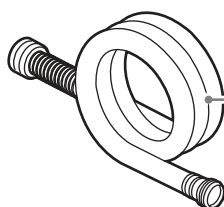
Lock

R18XTRP10



Operator's manual

Filter

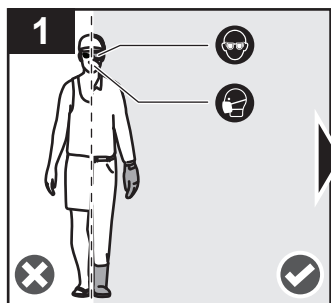


Suction hose

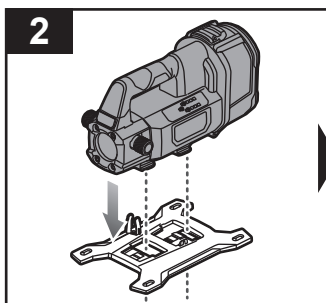
Battery pack

Charger

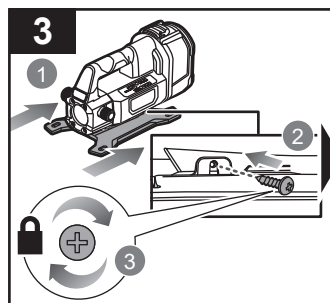




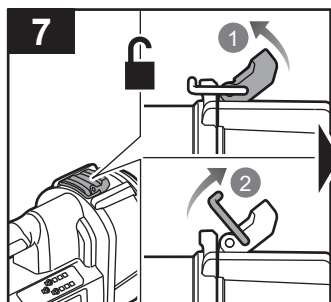
Always wear eye protection while operating the product. Wear an appropriate respiratory mask.



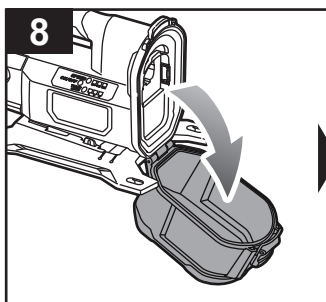
Install the product to the feet housing.



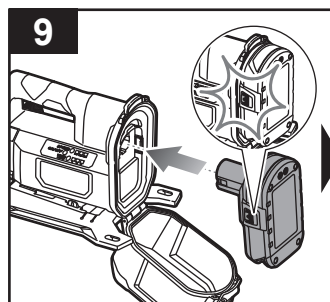
Slide the feet housing backward to secure it. Install the screw and turn it clockwise to tighten.



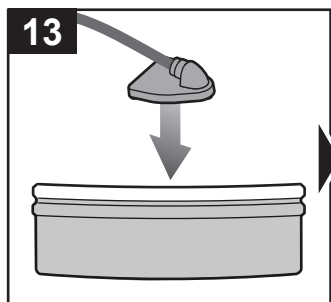
Flip up the latch and remove the latch connector from the groove to unlock the battery cover.



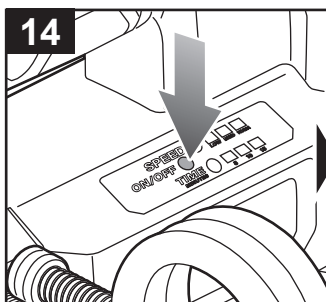
Open the battery cover.



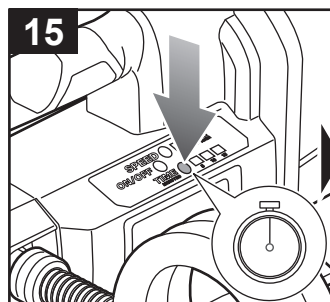
Install the battery pack. Make sure that the latches on the battery pack click into place.



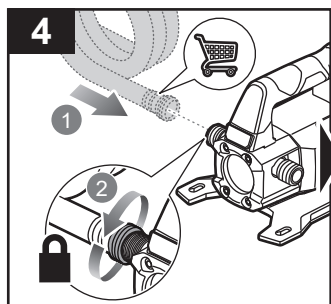
Place the filter on the area or container with the water to be transferred.



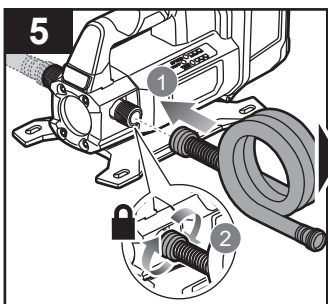
Press the on/off button to turn on the product.



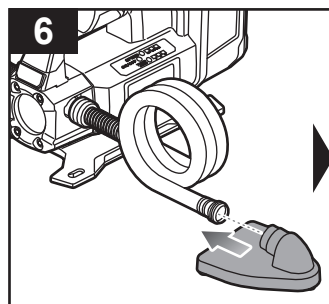
Press the timer button to set a timer.



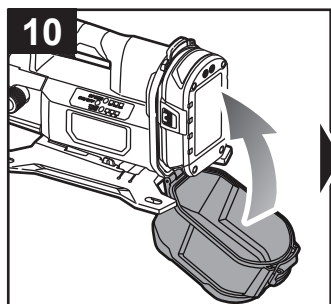
Attach the suction hose to the outlet port. Turn the coupling of the suction hose clockwise to tighten.



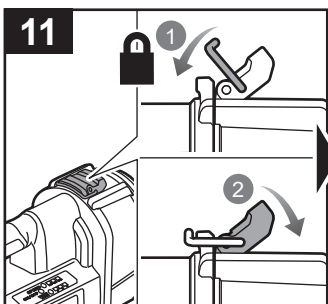
Attach the suction hose to the inlet port. Turn the coupling of the suction hose clockwise to tighten.



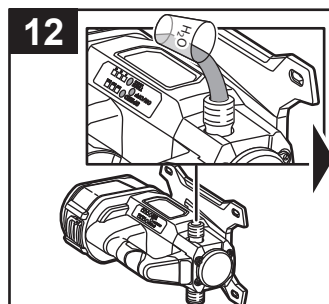
Attach the filter to the other end of the suction hose.



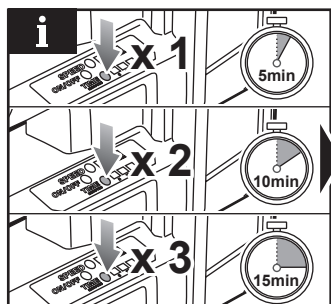
Close the battery cover.



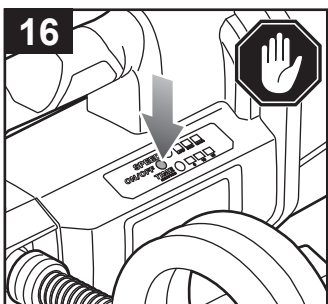
Hook the latch connector on the groove and flip down the latch to lock the battery cover.



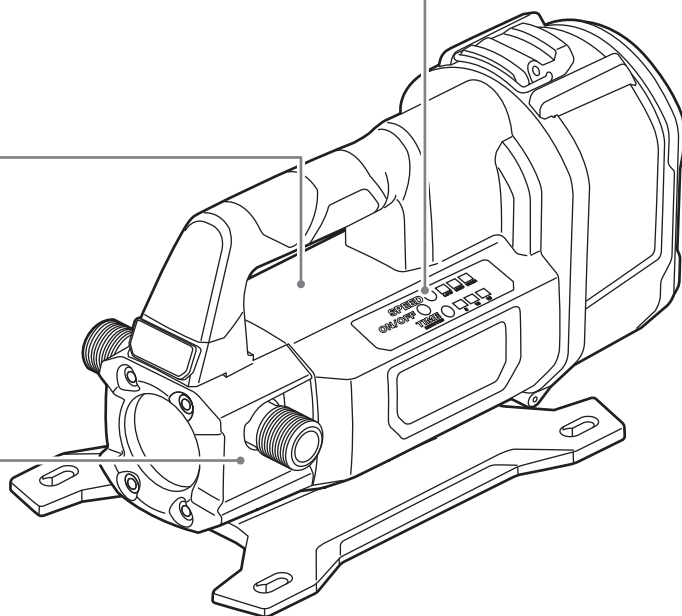
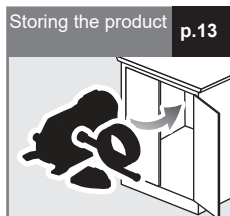
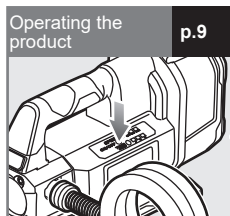
Pour water into the inlet port to prime the impeller inside the product.

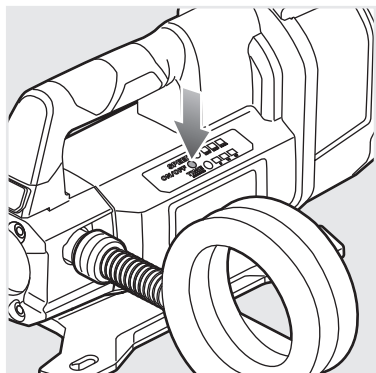


NOTE: Each press of the timer button sets the timer to 5 minutes and the succeeding press adds another 5 minutes.



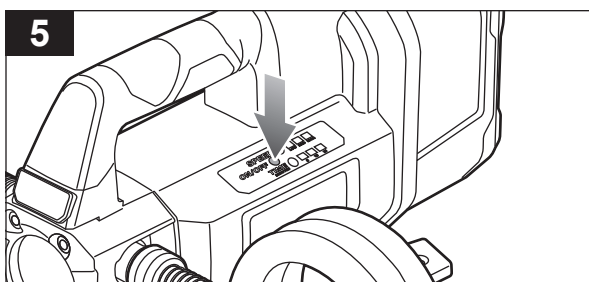
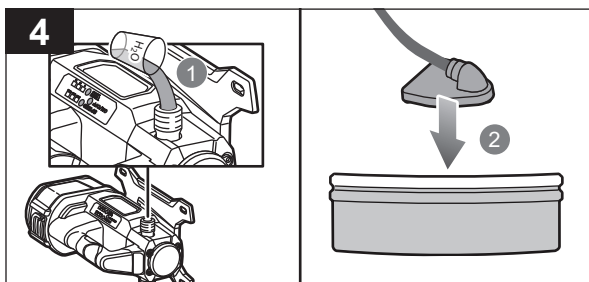
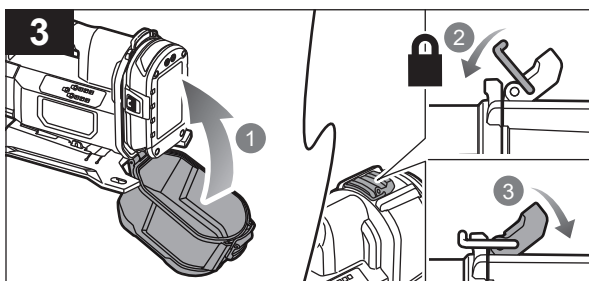
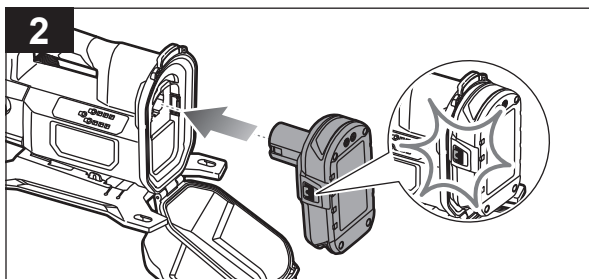
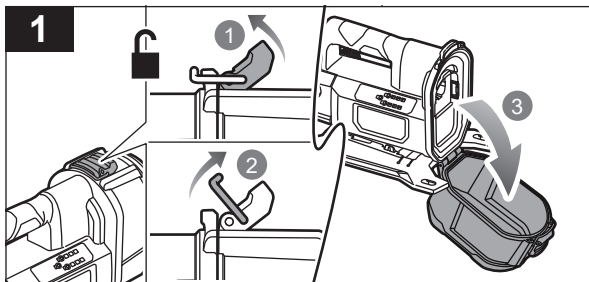
Press the on/off button to stop the product.





OPERATING THE PRODUCT

1. Flip up the latch and remove the latch connector from the groove to unlock the battery cover. Open the battery cover.
2. Install the battery pack. Make sure that the latches on the battery pack click into place.
3. Close the battery cover. Hook the latch connector on the groove and flip down the latch to lock the battery cover.
4. Pour water into the inlet port to prime the impeller inside the product. Place the filter on the area or container with the water to be transferred.
5. Press the on/off button to turn on the product.



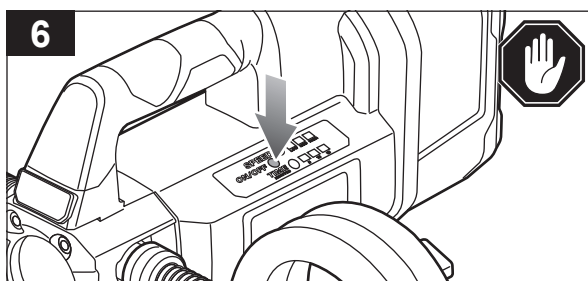
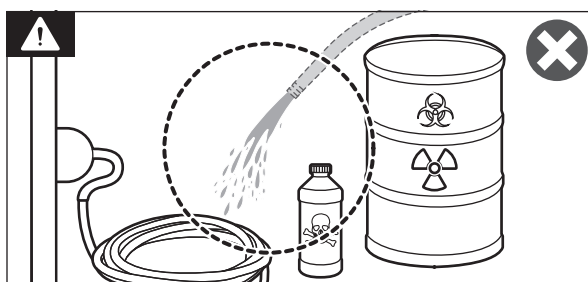
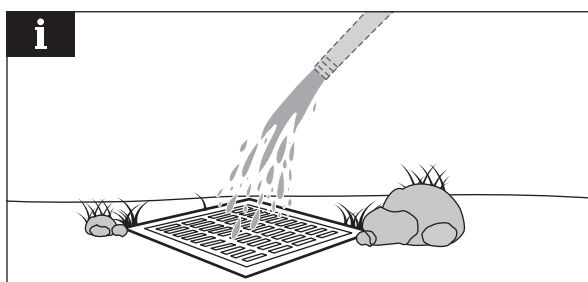
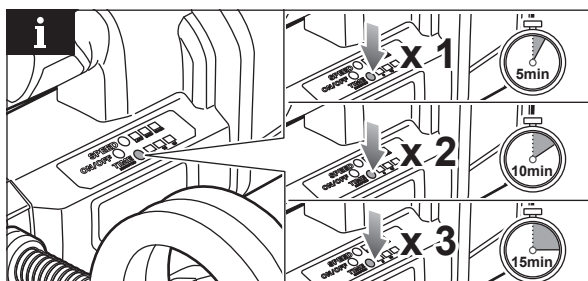
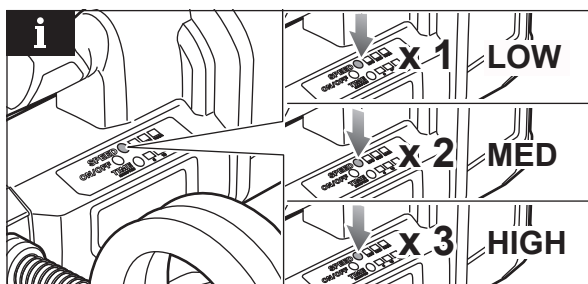
NOTE: Press the flow control button to adjust the suction speed. Each press of the flow control button cycles through the low, medium, and high speed settings.

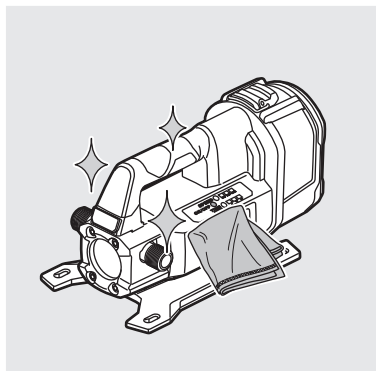
NOTE: Press the timer button to set a timer. Each press of the timer button sets the timer to 5 minutes and the succeeding press adds another 5 minutes.

NOTE: Discharge water properly into drains, gutters, or other appropriate sewage areas.

WARNING: Do not discharge water to areas with electrical or high voltage elements, active chemicals, or other objects or substances that might cause danger when mixed with water.

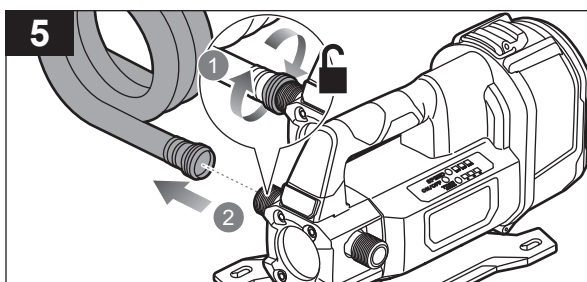
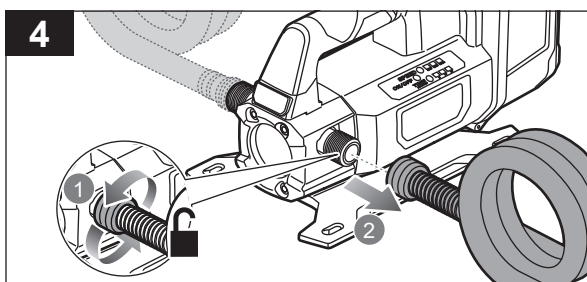
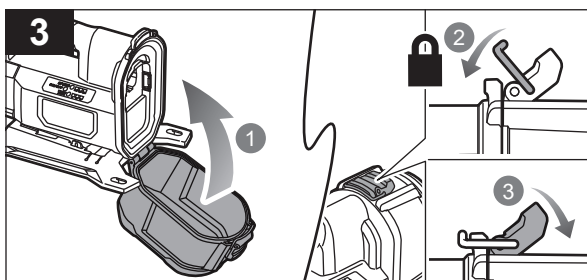
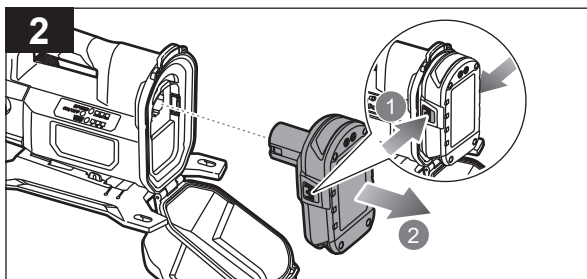
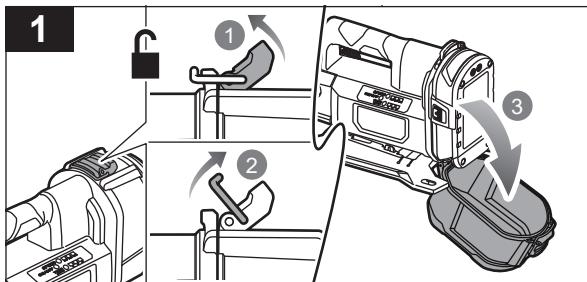
6. Press the on/off button to turn off the product.





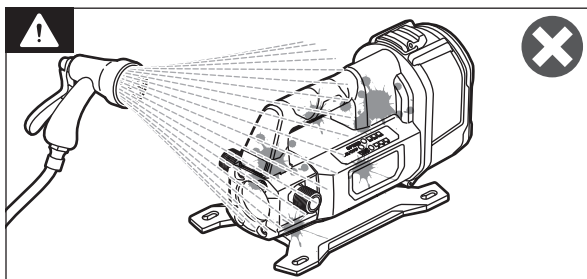
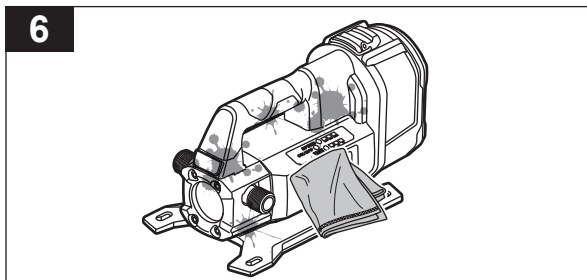
CLEANING THE PRODUCT

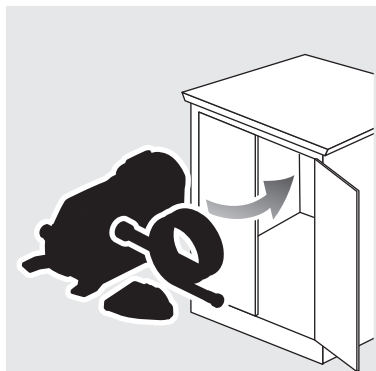
1. Flip up the latch and remove the latch connector from the groove to unlock the battery cover. Open the battery cover.
2. Press the latches on the battery pack and remove it from the product.
3. Close the battery cover. Hook the latch connector on the groove and flip down the latch to lock the battery cover.
4. Turn the coupling of the suction hose attached to the inlet port counterclockwise and remove it.
5. Turn the coupling of the suction hose attached to the outlet port counterclockwise and remove it.



6. Clean the product with a soft, dry cloth.

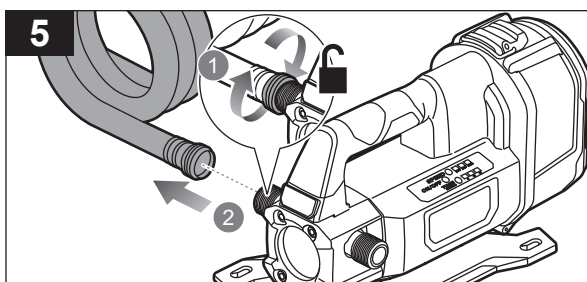
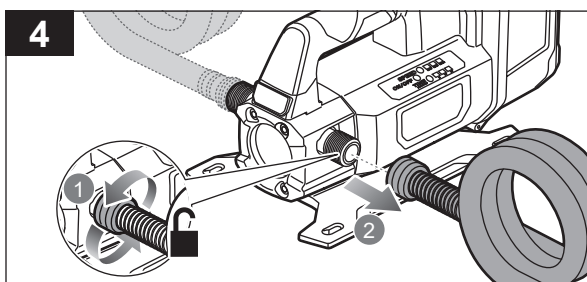
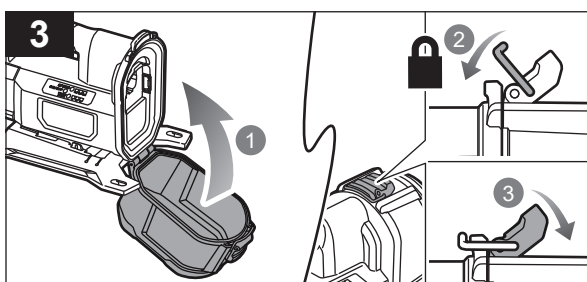
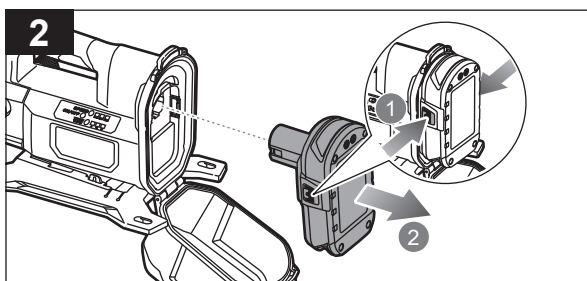
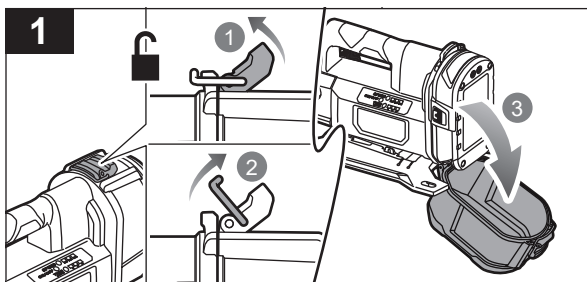
WARNING: Do not use water to clean the product.





STORING THE PRODUCT

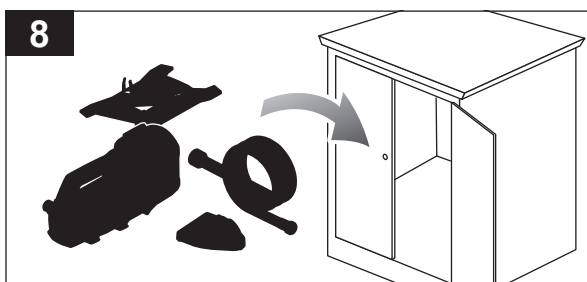
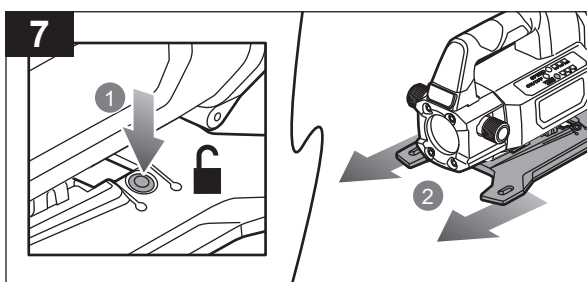
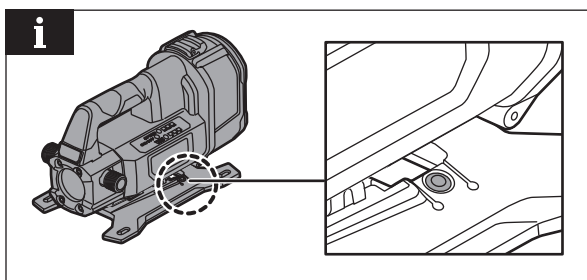
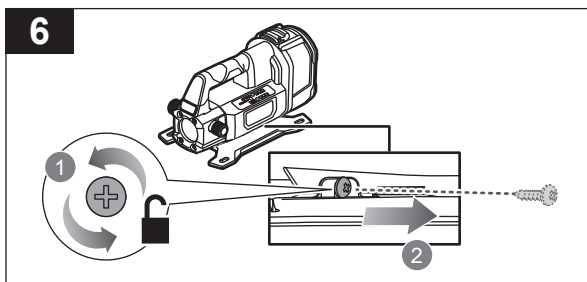
1. Flip up the latch and remove the latch connector from the groove to unlock the battery cover. Open the battery cover.
2. Press the latches on the battery pack and remove it from the product.
3. Close the battery cover. Hook the latch connector on the groove and flip down the latch to lock the battery cover.
4. Turn the coupling of the suction hose attached to the inlet port counterclockwise and remove it.
5. Turn the coupling of the suction hose attached to the outlet port counterclockwise and remove it.



6. Turn the screw counterclockwise and remove it.

NOTE: There is a button on the feet housing.

7. Press the button and remove the feet housing.
8. Store the product in a dry, well-ventilated area that is inaccessible to children. Keep the product away from corrosive agents, such as garden chemicals and de-icing salts.



PRODUCT SPECIFICATIONS

Cordless transfer pump

Model	R18XTRP10
Rated voltage	18 V d.c.
Flow rate	37.85 L/min (2,271 L/hr)
Maximum head	16.5 m
Maximum lift	5.2 m
Maximum water temperature rating	35 °C
Maximum particle size	2.5 mm
Inlet/outlet connection size (GHT male)	3/4 in.
Ingress protection	IPX4
Weight (without battery pack)	2.2 kg
Weight (with heaviest battery pack)	3.4 kg

BATTERY AND CHARGER

Model	R18XTRP10
Battery pack	-
Charger	-
Compatible battery packs	RB18L15, RB18L15A, RB18L15B, RB18L20, RB18L20A, RB18L25, RB18L25A, RB18L40, RB18L40A, RB18L50, RB18L50A, RB18L13, RB18L60A, RB18L90A, RB1815C, RB1820C, RB1825C, RB1840C, RB1840X, RB1850C, RB1850X, RB1860X

ACCESSORIES

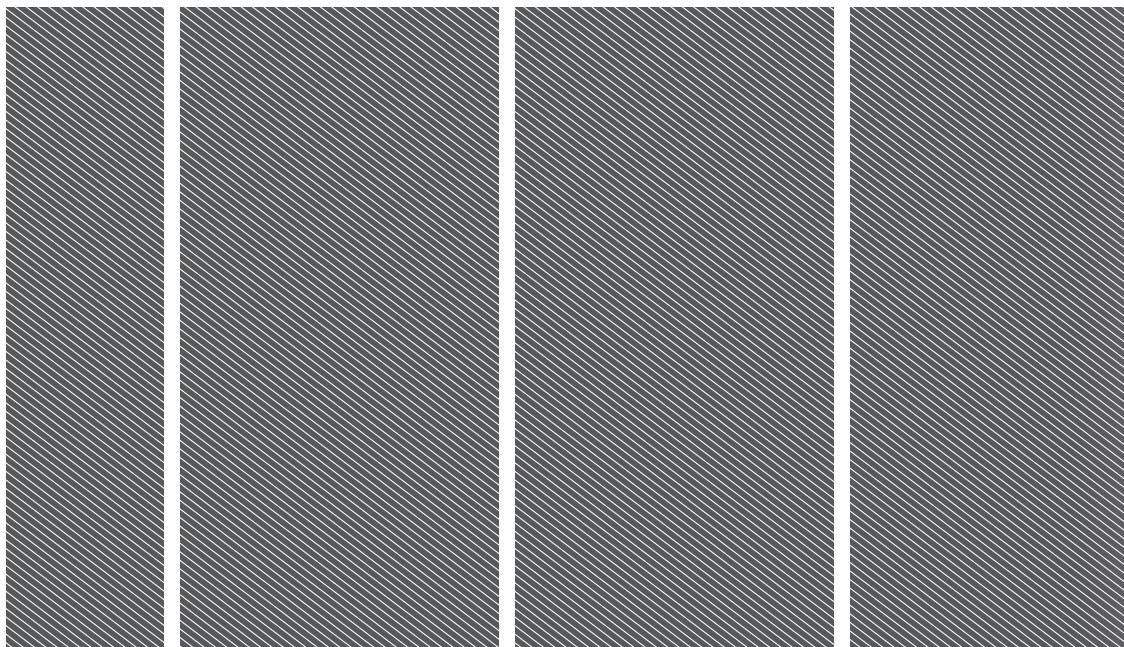
Suction hose	5131041965
Filter	5131041966

NOTE: Visit your local special orders desk or contact RYOBI customer service for replacement parts.

⚠ WARNING! The declared vibration total values and the declared noise emission values given in this instruction manual have been measured in accordance with a standardised test and may be used to compare one tool with another. They may be used for a preliminary assessment of exposure.

The declared vibration and noise emission values represent the main applications of the tool. However, if the tool is used for different applications, used with different accessories, or poorly maintained, the vibration and noise emission may differ. These conditions may significantly increase the exposure levels over the total working period. An estimation of the level of exposure to vibration and noise should take into account the times when the tool is turned off or when it is running idle. These conditions may significantly reduce the exposure level over the total working period.

Identify additional safety measures to protect the operator from the effects of vibration and noise, such as maintaining the tool and the accessories, keeping the hands warm (in case of vibration), and organising work patterns.



Imported by:
Techtronic Industries Australia Pty Ltd
31 Gilby Road, Mount Waverley, VIC 3149
Melbourne, Australia

Techtronic Industries N.Z. Limited
Unit C, 70 Business Parade South,
Highbrook, Auckland 2013, New Zealand

RYOBI is a trade mark of Ryobi Limited, and is used under license.

961479084-01

