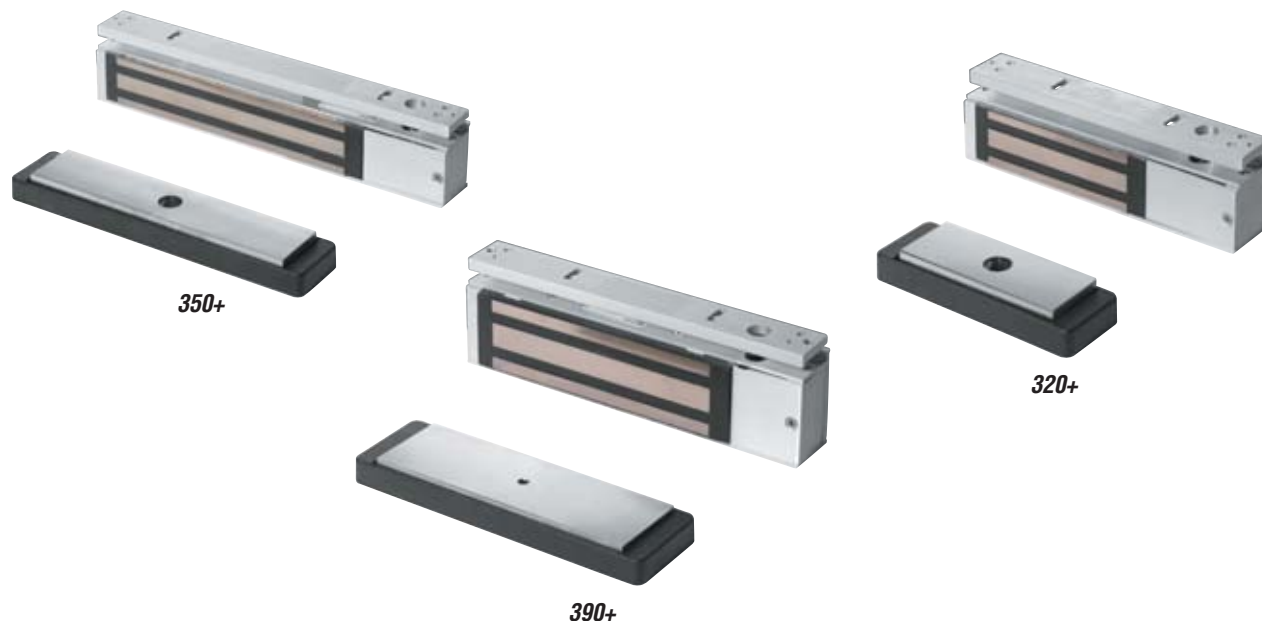


MagForce™ + Series Electromagnetic Locks

The High Security Solution

MagForce™
LIFETIME WARRANTY

Schlage Locknetics MagForce+ generation of electromagnetic locks is the evolution of the industry leading High Security Series. The MagForce+ family consists of the 390+ with 1650 lbs of holding force, the 350+ with 1200 lbs of holding force, and the 320+ with 700 lbs of holding force. Common features, installation, appearance, and options mean that the MagForce+

Series should be your first choice. The MagForce+ line is simply designed; if you know one magnet in the family, you know them all. So, for high security, narrowline, or traffic control applications throughout your facility, MagForce+ is the positive force with universal appeal.

Benefits of Using MagForce+ Series

- Quieter operation and higher reliability with an attractive armature housing
- Multiple application solutions with 390+, 350+, 320+ magnets (1650 lb, 1200 lb, and 700 lb respectively)
- Quick and easy installation with consistent style, adjustable mounting brackets, and automatic voltage selection
- Universal appearance with slide-in architectural finish plates
- Simplified line with modular circuit boards

MagForce+™ Series Electromagnetic Locks

The High Security Solution

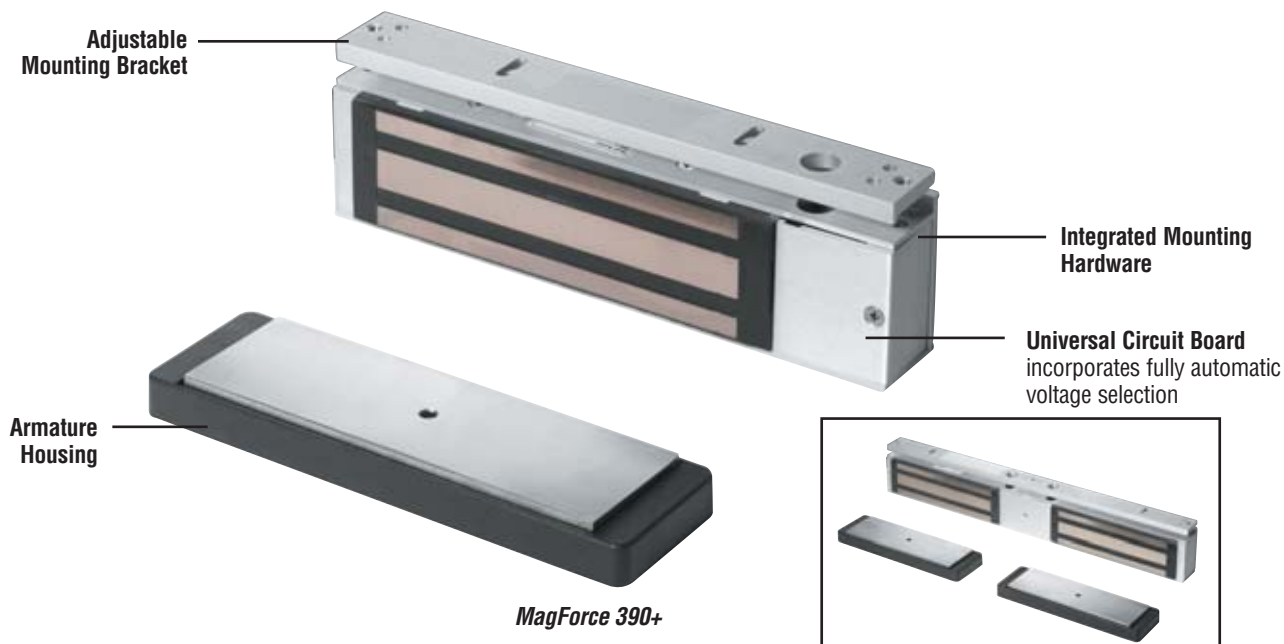
Features

	390+	350+	320+
<ul style="list-style-type: none"> • Automatic Voltage Selection (AVS) Simply connect to power. The magnet detects 12 or 24 Volts. • Aesthetically Matching Products Provide the MagForce™ Plus product family with a consistent look, meaning that architects and end users can have premium aesthetics throughout buildings and facilities. • Armature Housing Holds the armature in place, eliminating the noise and sagging that is possible with other armatures while offering quieter operation and increased reliability. The armature housing also provides an aesthetically pleasing look. Finally, the armature housing holds the magnets for the DSM option without having to mount an additional plate to the armature, ensuring quicker, more reliable installation. • Consistent Mounting Bracket Style Means every product in the family mounts the same way, even with top jamb (inswinging) applications, ensuring quicker, more reliable installation, fewer installation problems, and greater end user satisfaction. • Modular, Simplified Circuit Boards For AVS, DSM/MBS, ATS and L1 provide consistent wiring throughout the line and simplified product selection. 	Yes	Yes	Yes
<ul style="list-style-type: none"> • Anti-tamper Switch (ATS) Provides an indication that the cover of the magnet is securely fastened to the lock and that the on board circuitry is secure. 	Yes	Yes	Yes
<ul style="list-style-type: none"> • Custom Length Housings (CLH) and Variable Length Housings (VLH) Are available to cover the entire width or height of a door to provide a clean architectural look and provide additional protection from vandalism. 	Yes	Yes	Yes
<ul style="list-style-type: none"> • MBS Monitoring (L1) Magnetic Bond Sensor can be monitored remotely and the L1 provides LED for visual assurance locally. 	Yes	Yes	Yes
<ul style="list-style-type: none"> • Door Status Monitor and Magnetic Bond Sensor (DSM/MBS) Indicates that the door is open or closed and that proper bond exists between the magnet and the armature and that the door is secure. This can be monitored remotely to provide assurance that the door is closed and in position to be properly latched. 	Yes	Yes	Yes
<ul style="list-style-type: none"> • Herculite Door Bracket (HDB) Attaches to the top of either a 1/2" or 3/4" Herculite (glass) door to allow mounting of the armature without having to drill through the door, easing installation time, reducing frustration, and lowering overall cost. 	Yes	Yes	Yes
<ul style="list-style-type: none"> • Top Jamb Mounting Bracket with No Exposed Screws Provides a "cleaner" architectural look and eliminates vulnerability created by exposed mounting hardware, thereby increasing safety and reliability. The top jamb bracket has slide-in architectural finish plates to match the building's architectural finishes. 	Yes	Yes	Yes
<ul style="list-style-type: none"> • Relocking Time Delay (RTD) Controls the relock time of the locking device from 1-30 seconds, ensuring that each opening can be managed to allow flexibility with population of people using opening. 	Yes	Yes	Yes

MagForce™ 390+ Series Electromagnetic Lock

The High Security Solution

MagForce™
LIFETIME WARRANTY



Now with Fully Automatic Voltage Selection

The 390+ surface mounted electromagnetic lock is ideal for high security applications. This lock exceeds ANSI/BHMA A156.23 Grade 1 standards with 1650 pounds of direct holding force and is UL listed as an auxiliary lock for a 3 hour fire rated opening and for burglary resistance.

The 390+ is available for single, inswinging or outswinging, hollow metal, aluminum, and wood doors and frames as well as glass doors. The 392+ is available for pairs of hollow metal, aluminum, and wood doors and frames as well as glass doors

without a mullion. The 391+ with split armature is used with pairs of hollow metal, aluminum, and wood doors and frames without a mullion.

All models are ideal for open architecture and easily interface with electronic access control systems, automatic door operators, and fire or other hazard sensing systems for egress and emergency egress.

Benefits of Using MagForce™ 390+

- Fully Automatic Voltage Selection simplifies installation
- Modular design employs a standardized circuit board with easy to install connectors, adjustable mounting brackets, integrated mounting screws, and slide-in architectural finish plates
- The uniquely designed armature housing holds the armature in place, eliminating the noise and sagging possible with other armatures
- The armature housing increases the overall reliability of the product and provides an aesthetically pleasing look over traditional armature mountings, blending into the surrounding environment more easily
- The armature housing holds the magnets for the DSM option without having to mount an additional plate to the armature, ensuring quicker, more reliable installation



MagForce™ 390+ Series Electromagnetic Lock

The High Security Solution

How To Order MagForce 390+

	390+ – RTD – TJ90 – 628
Select Model	
Select Options/Accessories	
Select Finish	

1. Select Model

390+	High Security – Single Lock
391+	High Security with Split Armature
392+	High Security – Double Unit
390+ DSM/MBS	Single Lock with Door Status Monitor/ Magnetic Bond Sensor
392+ DSM2/MBS2	Double Lock with Door Status Monitor/ Magnetic Bond Sensor

2. Select Options/Accessories

RTD/RTD2	Relocking Time Delay
ATS/ATS2	Anti-tamper Switch
HDB*	Herculite Door Bracket
	Single HDB890
	Double HDB892
L1/L2**	LED indicator
TJ**	Top Jamb for inswing door
	Single TJ90
	Double TJ92
	Split TJ91
CLH	Custom Length Housing (Factory cut)
	Horizontal Single CLH90-3
	Horizontal Double CLH92-4
	Vertical Single CLH90-5
	Vertical Double CLH92-6
VLH	Variable Length Housing (Field Cut)
	Horizontal Single VLH90-3
	Horizontal Double VLH92-4
	Vertical Single VLH90-5
	Vertical Double VLH92-6
Filler Plates	see chart, pg F32
Angle Brackets	see chart, pg F32

* HDB/DSM/MBS option not available for 391+ model

** L1/L2 option only available on DSM/MBS models, not available for TJ applications

3. Select Finish

628	US28	Satin Aluminum, Anodized (<i>standard</i>)
335	US19	Satin Black, Anodized
612B	US10	Satin Bronze
612SF	US10	Satin Bronze-SF
613SF	US10B	Dark Satin Bronze, Anodized
628B	US28	Satin Aluminum, w/ Black
666B	US3	Bright Brass
666SF	US3	Bright Brass-SF
672B	US26	Bright Chrome
672SF	US26	Bright Chrome-SF

Armature housing finish standard Lexan black

B suffix – Satin black anodized 335/US19 housing with choice of select special finish for slide plates only

SF suffix – Special finish for all metal surfaces

Specifications:

390+

Holding Force:	1650 lbs.
Input Voltage:	12/24 VDC
Current Draw:	.60A@12VDC .30A@24VDC
Height:	2 ³ / ₄ "
Length:	10 ¹ / ₂ "
Width:	1 ¹¹ / ₁₆ "
Weight:	10.60 lbs

391+

Holding Force:	750 lbs. per door leaf
Input Voltage:	12/24 VDC
Current Draw:	.60A@12VDC .30A@24VDC
Height:	2 ³ / ₄ "
Length:	10 ¹ / ₂ "
Width:	1 ¹¹ / ₁₆ "
Weight:	10.60 lbs

392+

Holding Force:	1650 lbs. per door leaf
Input Voltage:	12/24 VDC
Current Draw:	1.2A@12VDC .60A@24VDC
Height:	2 ³ / ₄ "
Length:	20 ⁵ / ₈ "
Width:	1 ¹¹ / ₁₆ "
Weight:	20.70 lbs