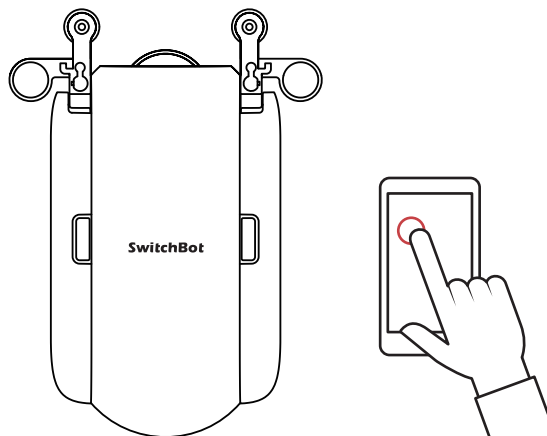


文件名称: Curtain I Rail 说明书	设计师:TJY	完成时间:2020/10/28
版本号: Curtain-I Rail-EN-2010	成品尺寸:83*110mm	
材质和工艺: 封面 157g铜板 内页 128g铜版纸, 骑马钉		
更改内容: 内容调整 (备注:此页从虚线下开始印刷, 表格不印刷)		

SwitchBot Curtain

User Manual (I Rail)



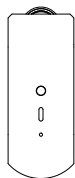
Contents

1. In the Box
2. Device Instruction
3. What You'll Need before Installation
4. Installation
5. Control
6. Settings
7. Charging, Firmware and Factory Reset
8. Specification
9. Return and Refund Policy
10. Contact and Support

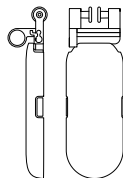
Want to see how it's done?

Go to support.switch-bot.com for
installation videos and additional tips.

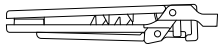
In the Box



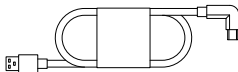
Main Body



Hook Pair (I Rail)

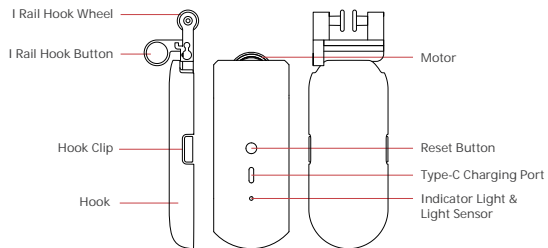


Clip



Type-C Cable

Device Instruction



What You'll Need before Installation

- A compatible phone or tablet with Bluetooth 4.2 or above
- Download the SwitchBot App
- A SwitchBot Account
- Wi-Fi if you want to enable Cloud Service
- Charge the Curtain for about 4 hours



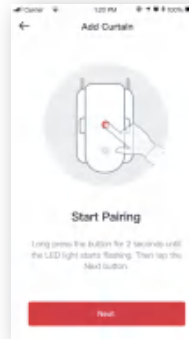
App Store



Google play



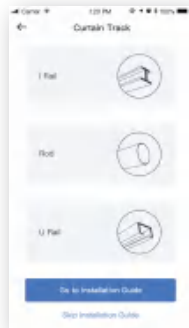
Installation



Step 1: Add Device

After downloading the App, go to Add Device from the left side menu. Then select Curtain. Follow the App instruction and add your device.

Select the Right Curtain Track



I Rail



$H > 10.0\text{mm}$

$17.5\text{mm} \geq W \geq 7.5\text{mm}$

Rod



Diameter
 $15.0\text{mm} - 40.0\text{mm}$

U Rail



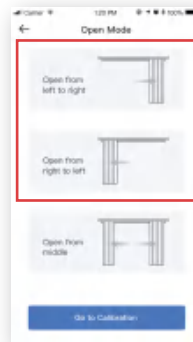
$W > 12.5\text{mm}$



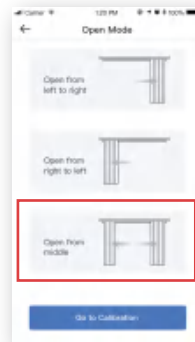
$H > 6.0\text{mm}$

$8.0\text{mm} \geq W > 6.0\text{mm}$

Select the Open Mode



For single side curtain, tap "Open from right to left" or "Open from left to right" depending on which way you want to open your curtain.

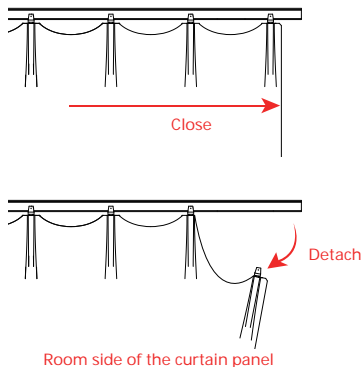


For double side curtain, tap "Open from middle".

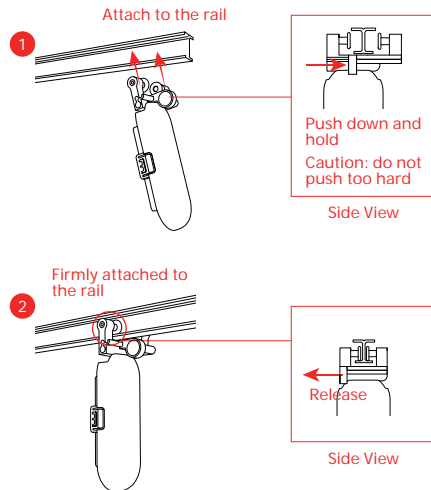
Step 2: Install on Your Curtain Track

Retrofitting is simple with SwitchBot Curtain. It only takes a few seconds to make your existing curtains smart. It is straight forward and intuitive with our App instruction.

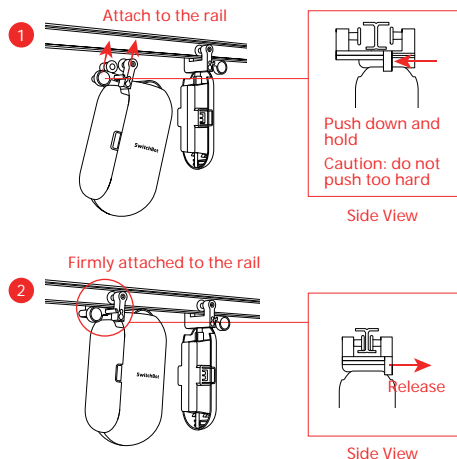
1. Please fully close your curtain and then detach the end curtain hook from the track.



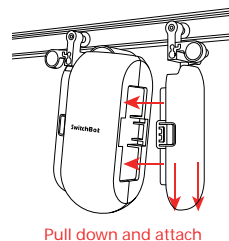
2. Take one Hook (I Rail). Push the Hook Button down and hold. Then attach the Hook onto the curtain rail. When both of the Hook Wheels are aligned with the rail, release the Hook Button so that they are firmly attached.



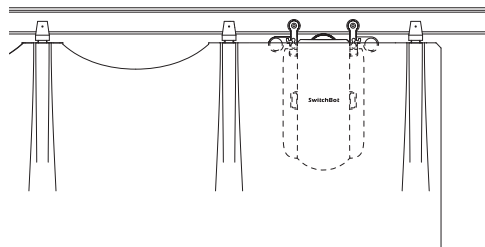
3. Take the Main Body with a Hook (1 Rail) installed. Push the Hook Button down and hold. Then attach the Hook onto the curtain rail. When both of the Hook Wheels are aligned with the rail, release the Hook Button so that they are firmly attached. The SwitchBot LOGO should face your room.



4. Pull the single Hook down and attach it back to the Main Body.



5. Put the curtain back in place so the Curtain is hidden.



Install the Clip (Optional)

If you use double side curtain, you need two SwitchBot Curtains to open it from the middle. Alternatively, you can use the auxiliary Clip we provide to turn it into a single side curtain so that you only need one SwitchBot Curtain.

To do that, fully close the curtain so the 2 panels are closest to each other. Connect the upper parts of the two panels by using the Clip. Draw the curtain back and forth to make sure the two panels move as one. Then you can refer to Step 2: Install on Your Curtain Track on how to set the Curtain up.

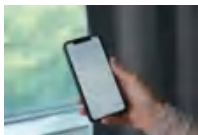
Step 3: Calibration

Calibration is for your Curtain to adapt to your existing curtain track. You need to calibrate before finishing the Installation or every time you change the Open Mode. You may redo the calibration after installing within the Settings.

Control

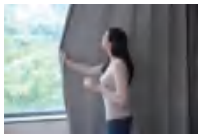
Lots of convenient ways to control, at your will.

App Control

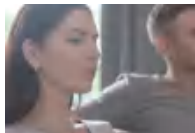


Open and close the curtain at your fingertip. We offer intuitive App control for iOS and Android, with weekly/bi-weekly updates following feedback from you. OTA firmware update is also available for better user experience.

Touch & Go



Even with SwitchBot Curtain, you'd probably still instinctively draw the curtains by hand sometimes. When it senses you drawing the curtain, the SwitchBot Curtain will kick in and do the work for you. We call this Touch & Go.



Voice Control and Home Automation*

Smart living is powered by your voice commands. Wouldn't it be great to just say it?

"Alexa, close the curtain."

"OK Google, close my bedroom curtain."

"Hey Siri, open the living room curtain."

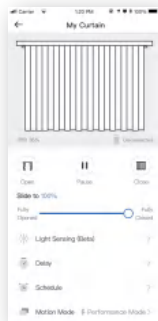
* Require SwitchBot Hub Mini (sold separately).



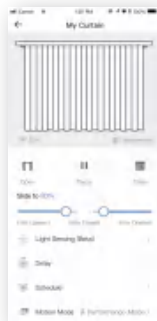
Control with SwitchBot Remote (Sold Separately)

A wireless remote add-on for you to place anywhere.

App Control



Single side curtain



Double side curtain



App Store



Google play



Touch & Go

Even with SwitchBot Curtain, you'd probably still instinctively draw the curtains by hand sometimes. When it senses you drawing the curtain by more than 5 cm*, the SwitchBot Curtain will kick in and do the work for you.

For double side curtain, drawing on one side of curtain will trigger both Curtains to open or close simultaneously.

"Touch & Go" is turned on by default. To turn off, go to "Advanced Settings", and turn off "Touch & Go".

* 5 cm is the best threshold we tested because it lowers the possibility of false trigger by your cats and dogs.

Voice Control and Home Automation*

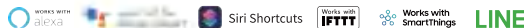
You need to turn on Cloud Service in Settings and then connect respective service. Voice command can trigger fully open and fully close.

Alexa, close the curtain.

OK Google, close my bedroom curtain.

Hey Siri, open the living room curtain.

* Require SwitchBot Hub Mini (sold separately).



SwitchBot Scene

You can set up SwitchBot Scene for home automation within the SwitchBot eco-system when you turn on the Cloud Service within the Settings. There are unlimited possibilities.



Curtain



Remote



Curtain



Solar Panel



Curtain

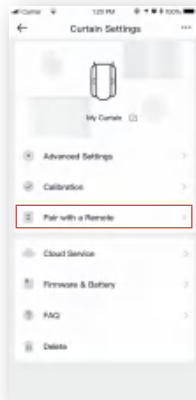


Hub Mini



Meter

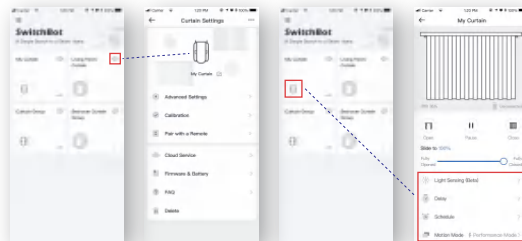
Control with SwitchBot Remote (Sold Separately)



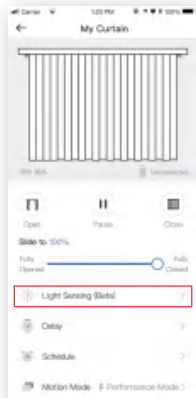
You can pair a Remote in the Settings. Please place your phone, Remote and Curtain close to each other before pairing. The rule of thumb for the distance would be within your eye sight. One key on the Remote can trigger one action of your single side curtain or double side curtain. For example, a key can trigger the curtain to close OR open. Please refer to Remote user manual for the best support.

Settings

Tap the gear icon on the Home Page near the Curtain icon to go to the Settings. Or tap the Curtain icon to go to the Control page.



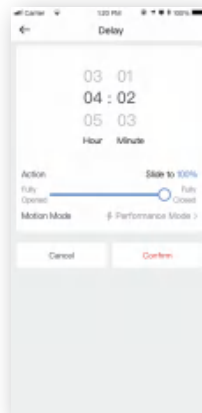
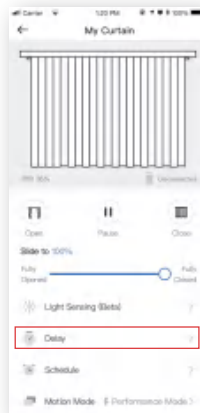
Light Sensing



The light sensing feature allows triggering your device by sunlight. It's still in the beta stage and upgrading continuously, so please explore the details in the latest App. Please send feedback via the SwitchBot App in the left side menu with the details. Your feedback is very much appreciated.

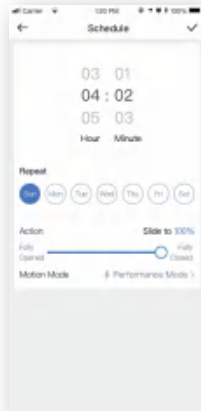
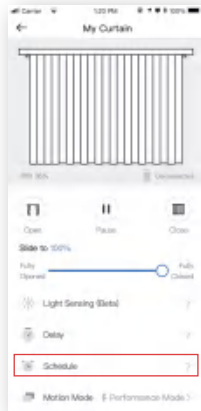
Delay

You can set up 1 Delay for countdown action. You can set the countdown time, percentage of opening or closing, and Motion Mode.

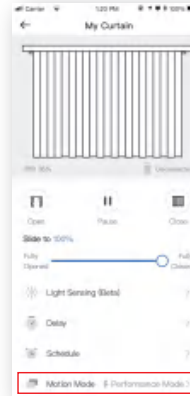


Schedule

You can set up 5 Schedules on board, or unlimited Schedules with a Hub. You can set the day, time, percentage of opening or closing, and Motion Mode.



Motion Mode



Performance Mode is the default mode with more powerful strength* but higher noise level. Silent Mode has lower noise level with less powerful strength. The best use case would be waking up with sunshine.

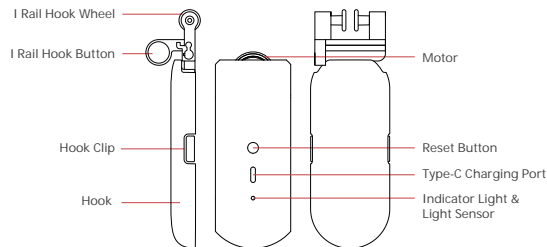
* Up to 8 kg / 17 pounds of curtain.

Charging, Firmware and Factory Reset

Charging

It takes about 10 hours¹ to fully charge the battery and the battery lasts 8 months after a full charge². You may also purchase our Solar Panel to charge by sunlight³.

1. 5V=1A adapter is required to charge with adapter.
2. Battery life is tested under condition of runway of 3 meters, loaded with 8 kg of curtain, opened and closed twice a day, 25°C. Battery life may vary given different condition.
3. Illuminance Level 6 is required to charge with Solar Panel.



Firmware

Please make sure you have the up to date firmware by upgrading in time.

Factory Reset



Long press the button for 15 seconds until the LED light lights up. Then release the button. If you are using double side curtain, you will need to redo the calibration on both Curtains.

Caution:

You may lose all the settings after Factory Reset and you may need to add the device again and re-calibrate.

Specification

Model Number: W0701600

Color: White / Black

Material: ABS plastic with UV-Resistant coating

Product Size (Main Body): 42mm x 51mm x 110mm

Product Net Weight (Main Body): 135g

Power: Type-C, DC 5V=1A, 3350 mAh Lithium-ion Battery. Or by Solar Panel¹

Battery Life: 8 months². Or unlimited with Solar Panel

Connectivity: Bluetooth 5.0 Long Range

Sensor: Accelerometer, light sensor

Strength: Up to 8 kg / 17 pounds of curtain

Max Runway: 3 meters

Mode: Silent Mode / Performance Mode

Timer: Up to 5. Or unlimited with a Hub³

Voice Control (Hub Required): Amazon Alexa, Google

Assistant, Siri Shortcuts, SmartThings, IFTTT, and LINE Clova

1. Solar Panel is sold separately.
2. Battery life is tested under condition of runway of 3 meters, loaded with 8 kg of curtain, opened and closed twice day, 25 C. Battery life may vary given different condition.
3. Hub is sold separately.

Note: Use under regular temperature only.

Return and Refund Policy

This product has one-year warranty (start from the purchasing day).

The situations below do not fit the Return and Refund Policy

- Intended damage or abuse.
- Inappropriate storage (drop down or soaking in water).
- User modify or repair.
- Using loss.
- Force majeure damage (Natural disasters).

Contact and Support

Setup and Troubleshooting: support.switch-bot.com

Support Email: support@wondertechlabs.com

Feedback: Please send feedback via the SwitchBot App in the left side menu with the details of the issue.

CE Warning

Manufacturer's Name: Woan Technology (Shenzhen) Co., Ltd.

Sample Description: SwitchBot Curtain

Trade Mark: SwitchBot

Model number: W0701600

Operating Temperature: -20°C-60°C

This product is a fixed location. To comply with RF exposure requirements, a minimum separation distance of 20cm must be maintained between the user's body and the device, including the antenna. Use only the supplied or an approved antenna.

This device in compliance with the essential requirements and other relevant provisions of Directive 2014/53/EU. All essential radio test suites have been carried out.

1. CAUTION : RISK OF EXPLOSION IF BATTERY IS REPLACED BY AN INCORRECT TYPE. DISPOSE OF USED BATTERIES ACCORDING TO THE INSTRUCTIONS.

2. The device complies with RF specifications when the device used at 20cm from your body.

FCC Warning

This device complies with part 15 of the FCC Rules. Operation is subject to the following two conditions: (1) This device may not cause harmful interference, and (2) this device must accept any interference received, including interference that may cause undesired operation. Any Changes or modifications not expressly approved by the party responsible for compliance could void the user's authority to operate the equipment. This

equipment has been tested and found to comply with the limits for a Class B digital device, pursuant to part 15 of the FCC Rules. These limits are designed to provide reasonable protection against harmful interference in a residential installation. This equipment generates uses and can radiate radio frequency energy and, if not installed and used in accordance with the instructions, may cause harmful interference to radio communications. However, there is no guarantee that interference will not occur in a particular installation. If this equipment does cause harmful interference to radio or television reception, which can be determined by turning the equipment off and on, the user is encouraged to try to correct the interference by one or more of the following measures:

- Reorient or relocate the receiving antenna.
 - Increase the separation between the equipment and receiver.
 - Connect the equipment into an outlet on a circuit different from that to which the receiver is connected.
 - Consult the dealer or an experienced radio/TV technician for help.
- The device has been evaluated to meet general RF exposure requirement. The device can be used in portable exposure condition without restriction. To maintain compliance with FCC's RF Exposure guidelines, This equipment should be installed and operated with minimum distance between 20cm the radiator your body: Use only the supplied antenna.
- Warning: Changes or modifications to this unit not expressly approved by the part responsible for compliance could void the user's authority to operate the equipment.

KCC Warning

인증받은자의 상호: Woan Technology (Shenzhen) Co., Ltd.

제품명/모델명: 특정소출력 무선기기(무선데이터통신시스템용 무선기기) / W0701600

제조사 및 제조국가: Woan Technology (Shenzhen) Co., Ltd. /China

제조년월: 2020.06

인증번호: R-R-Woa-W0701600

이 장치는 보안성이 없으므로 통신보안에 위배되는 사항의 통신을 금지하며 운용 중

NCC 警語：

依據低功率電波輻射性電機管理辦法

第十二條

※經型式認證合格之低功率射頻電機，非經許可，公司、商號或使用者均不得擅自變更頻率、加大功率或變更原設計之特性及功能。

第十四條

※低功率射頻電機之使用不得影響飛航安全及干擾合法通信；經發現有干擾現象時，應立即停用，並改善至無干擾時方得繼續使用。

-前項合法通信，指依電信法規定作業之無線電通信。

-低功率射頻電機須忍受合法通信或工業、科學及醫療用電波輻射性電機設備之干擾。