

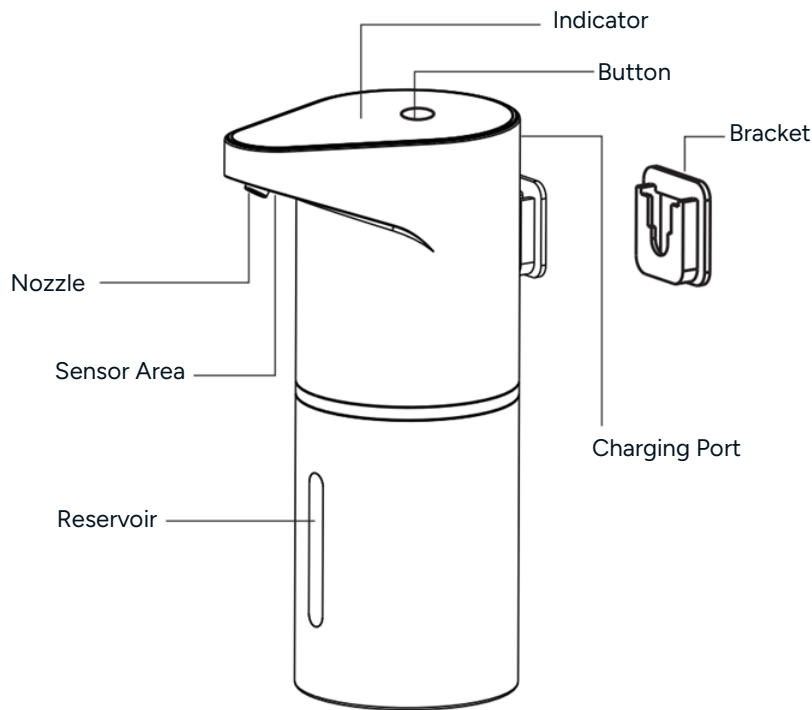
Automatic Soap Dispenser

NBAUTOSPDSA

Safety & Warnings

- Read all safety notes and instructions before first use even if you are familiar with this product. Retain this user guide for future reference.
- Use the product only as described in this user guide.
- Fully charge the product before using it for the first time.
- To avoid damage to the product, do not use this product with non-foaming liquid soap.
- Do not rinse or immerse this product in water. Instead, clean with a damp cloth.
- Place this product in a cool place, away from directly sunlight and sources of heat.
- If this product is not being used for an extended period, charge it at least once every 3 months.

Overview

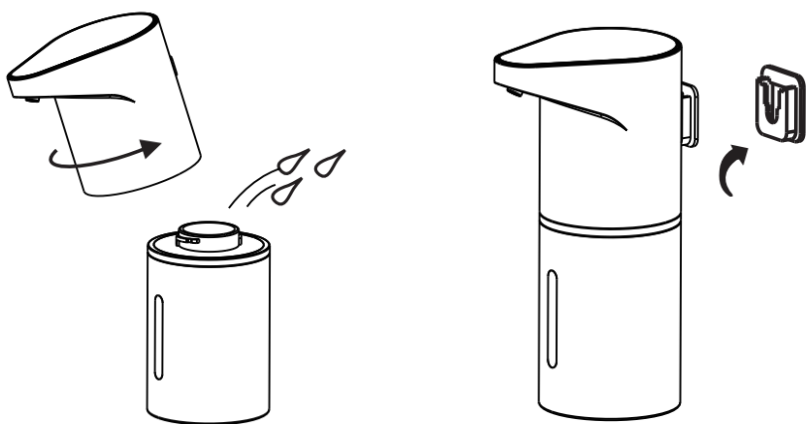


Indicator

Condition	Indicator
Power on	Green for 3 seconds
Power off	Red for 3 seconds
Low level	Blue for 0.5 seconds
Medium level	Blue for 1 seconds
High level	Blue for 1.5 seconds
Automatically cleaning	Alternating green and blue for 60 seconds
Low power	Flashing red
Charging	Solid red

Assembly

1. Add foaming soap liquid into the reservoir. If using regular liquid soap, dilute it with water at a ratio of 1:6-10 before adding it to the reservoir.
2. Attach the top of the dispenser to the reservoir and rotate in a clockwise direction secure it in place. Carefully shake the dispenser to check for leaks.
3. Remove the adhesive backing and attach the bracket to the wall in the desired location.
4. Attach the dispenser to the bracket.



Operation

Charging

1. Connect the supplied charging cable to a USB power adapter and plug it into an electrical outlet.
 2. Connect the charging cable to the USB-C charging port on the rear of the dispenser.
- The dispenser will take approximately 3.5 hours to reach a full charge.
 - The battery will last 2-3 months on standby and approximately 1 month with frequent usage.

Turning the Dispenser On/Off

Press and hold the button for 2 seconds to turn the dispenser on/off.

Dispensing Soap

1. Place hands under the sensor area and the unit will automatically dispense soap.
2. This product features 3 levels of dispensing (low, medium and high). Press the button to cycle through the 3 levels.
3. The indicator will display the level selected.



Low



Medium



High

Automatic Cleaning

1. Replace the soap in the reservoir with water then press and hold the button for 10 seconds to activate automatic cleaning. The process will last approximately 60 seconds with the indicator alternately flashing blue and green.
2. Press the button to end automatic cleaning.

Notes

[illegible]

Need more information?

We hope that this user guide has given you the assistance needed for a simple set-up.

For the most up-to-date guide for your product, as well as any additional assistance you may require, head online to **help.Kogan.com**.

