

# Quick Start Guide



## Artemis™

Servotorq II™ Integrated Servo Motor  
Part No. OVU20005 – OVU20010

**Thank you for purchasing Overview's Artemis Integrated Servo Motor.**

To quickly get up and running with your Artemis motor, please refer to the Technical Manual, I<sup>2</sup>C Protocol Guide and Application Notes located at:

<http://www.overview.co.uk/technical-support/>

**Please observe the following precautions when handling and operating the Artemis motor:**



- The Artemis motor uses semiconductors which can be damaged by electrostatic discharge (ESD). The motor must be handled and stored in an ESD safe environment.
- The Artemis motor's nominal supply is 48V DC, using up to 1 A DC. Do **not** hot-plug the power supply.

### Reference Information:

The Artemis I<sup>2</sup>C control interface uses 12V signalling levels. Please see the Technical Manual for further details and a reference interface circuit.

When initially powered up, the motor will perform an initialisation routine as detailed in the Technical Manual. During initialisation, the unit will slightly rotate and temporarily draw a current less than or equal to the max rated current depending on the inertial load.

Overview Limited

Overview House Kingswey Business Park Forsyth Road Woking GU21 5SA United Kingdom

© Overview Ltd 2021

[www.overview.co.uk](http://www.overview.co.uk)

OVZ20022 Rev 3

# Quick Start Guide

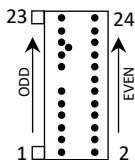
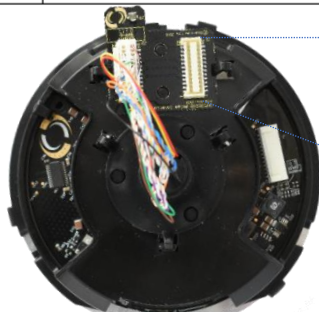
## Artemis™

Servotorq II™ Integrated Servo Motor  
Part No. OVU20005 – OVU20010

Artemis motor pinout reference (please see the Technical Manual for further details):

- Connector type: JST ZPD 24-way. Mating housing part # ZPDR-24V-S, crimp part # SZPD-002T-P0.3
- Mating housing part: <https://www.digikey.co.uk/products/en?keywords=%23%20ZPDR-24V-S>
- Pre-crimped leads: <https://www.digikey.co.uk/product-detail/en/jst-sales-america-inc/SZPD-002T-P0-3/455-2539-1-ND/2472595>

Connectors			
Pin	Signal	Pin	Signal
1	48V <sub>in</sub>	2	GND
3	48V <sub>in</sub>	4	GND
5	48V <sub>in</sub>	6	GND
7	PASS THROUGH PAIR 1+	8	PASS THROUGH PAIR 4+
9	PASS THROUGH PAIR 1-	10	PASS THROUGH PAIR 4-
11	PASS THROUGH PAIR 2+	12	PASS THROUGH PAIR 5+
13	PASS THROUGH PAIR 2-	14	PASS THROUGH PAIR 5-
15	PASS THROUGH PAIR 3+	16	I <sup>2</sup> C SDA
17	PASS THROUGH PAIR 3-	18	I <sup>2</sup> C SCL
19	PASS THROUGH AUX 1	20	I <sup>2</sup> C ADDRESS SELECT (Not available via slip-rings)
21	PASS THROUGH AUX 2	22	NOT CONNECTED
23	NOT CONNECTED	24	BODY (SPINDLE CONNECTION)



All ZPD connectors have the same pinout (on both PCBAs).

Note: I<sup>2</sup>C Address Select to be connected to GND for address 0x29, open for 0x28 (7-bit address). This is only available on the connectors on the large circular motor PCBA; this signal is not passed through the slip-rings supplied. (PAN/TILT address can be firmware selected in such cases.)

Overview Limited

Overview House Kingswey Business Park Forsyth Road Woking GU21 5SA United Kingdom

© Overview Ltd 2021

[www.overview.co.uk](http://www.overview.co.uk)

OVZ20022 Rev 3