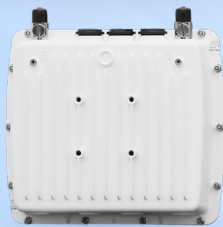


Multipoint 10100(L) Series



Product Snapshot

The Multipoint 10100 (L) product family offers an extensive range of models to meet the need of designers with specific requirements.

The range includes several base station and subscriber units, including combination subscriber/Wifi models.

Capable of throughput up to 672Mbps, AES 128 encryption, and delivering flexible antenna options, the 10100 Series is an excellent tool kit for the network designer.

- Wide Band 4.9 + 5 GHz Radio
- 2x2 MIMO radio delivering up to 672 Mbps
- Advanced QoS for quad-play applications
- AES 128 encryption and Radius authentication
- BSU redundancy
(500 milliseconds switchover time)
- 20, 40, and 80 MHz channels.

Powered by WORP[®]

Proxim WORP enables the most efficient wireless broadband access possible in a packet-based network. Advanced QoS controls, committed interface rates, latency controls, IGMP snooping, and native multicast support allow granular service level management and the best video performance available in this product class.

Advanced Interference Management

Proxim ClearConnect™ combines multiple dynamic technologies and delivers the best interference management solution available.

Mobility

Featuring advanced Mobility technology the 10100 Series delivers rapid hand-off between fixed base stations and moving vehicles to ensure uninterrupted broadband at speeds up to 295 km/h (185 mph).

Rugged Reliability

IP67 rated metal enclosure to ensure years of reliable service in harsh environments, including high winds, high salt, and temperature extremes.

Specifications

PRODUCT MODELS

| | | |
|-----------------------|--|---------------|
| MP-10100L-BSU-WD | Tsunami® MP 10100 Base Station Lite, 400 Mbps, MIMO 2x2, Type-N Connectors | PN: 901-00277 |
| MP-10150L-BS9-WD | Tsunami® MP 10150 Base Station Lite, 400 Mbps, MIMO 2x2, 90° sector antenna | PN: 901-00279 |
| MP-10150L-BS1-WD | Tsunami® MP 10150 Base Station Lite, 400 Mbps, MIMO 2x2, 22 dBi panel antenna | PN: 901-00280 |
| MP-10100L-SUA-WD | Tsunami® MP 10100 Subscriber Unit Lite, 400 Mbps, MIMO 2x2, Type-N Connectors | PN: 901-00278 |
| MP-10150L-SUR-WD | Tsunami® MP 10150 Subscriber Unit Lite, 400 Mbps, MIMO 2x2, 22 dBi panel antenna | PN: 901-00281 |
| MP-10100L-BSx-866-UPG | Tsunami® MP 10100 Base Station Lite, 400 Mbps to 866 Mbps license upgrade | PN: 997-00032 |
| MP-10100L-SUx-866-UPG | Tsunami® MP 10100 Subscriber Unit Lite, 400 Mbps to 866 Mbps license upgrade | PN: 997-00033 |

INTERFACES

| | |
|-------------------|--|
| WIRED ETHERNET | Two auto MDI-X RJ45 10/100/1000Mbps Ethernet (Port #1 with PoE in & Data, Port #2 with PoE out & Data) |
| WIRELESS PROTOCOL | WORP® (Wireless Outdoor Router Protocol) |

RADIO & TX SPECS

| | |
|------------------|--|
| MIMO | 2x2:2 |
| MODULATION | OFDM with BPSK, QPSK, QAM16, QAM64, QAM256 |
| FREQUENCY | 4.900 – 5.925 GHz (Subject to Country Regulations) |
| CHANNEL SIZE | 40 MHz and 20 MHz (±5ppm channel accuracy) |
| DATA RATE | MCS 0 to 9 with Dynamic Data Rate Selection |
| TX POWER | Up to 28 dBm (dual chain) |
| TX POWER CONTROL | 0 - 27 dB, in 1 dB steps. Automatic TPC with configurable EIRP limit |

| | 80 MHz | 40 MHz | 20 MHz |
|--------------------------|--|----------------|----------------|
| TX POWER (dual RF) | MCS9: 21 dBm | MCS0: 28 dBm | MCS0: 29 dBm |
| | MCS0: -89 dBm | MCS9: 22 dBm | MCS9: 25 dBm |
| RX SENSITIVITY (Per=10%) | MCS9: -68 dBm | MCS0: -93 dBm | MCS0: -94 dBm |
| | Up to 672 Mbps | MCS9: -71 dBm | MCS9: -74 dBm |
| THROUGHPUT (RFC 2544) | Up to 324 Mbps | Up to 324 Mbps | Up to 134 Mbps |
| OTHER | Dynamic Channel Selection (DCS) based on interference detection, Dynamic Frequency Selection (DFS) based on radar signature, Automatic Transmit Power Control (ATPC) with EIRP limit support | | |

MANAGEMENT

| | |
|------------------------|---|
| REMOTE | Telnet and SSH, Web GUI and SSL/TLS, TFTP, SNMPv3 |
| SNMP | SNMP v1-v2c-v3, RFC-1213, RFC-1215, RFC-2790, RFC-2571, RFC-3412, RFC-3414, Private MIB |
| OTHER | Syslog, sFlow™ agent, SNTP and local time, Spectrum analyzer |
| MULTI-LANGUAGE SUPPORT | Web Interface available in English, French, Spanish and Chinese |

SYNCHRONIZATION

Pass-through SyncE and Precision Time Protocol (IEEE 1588v2) Ethernet Synchronization

SECURITY

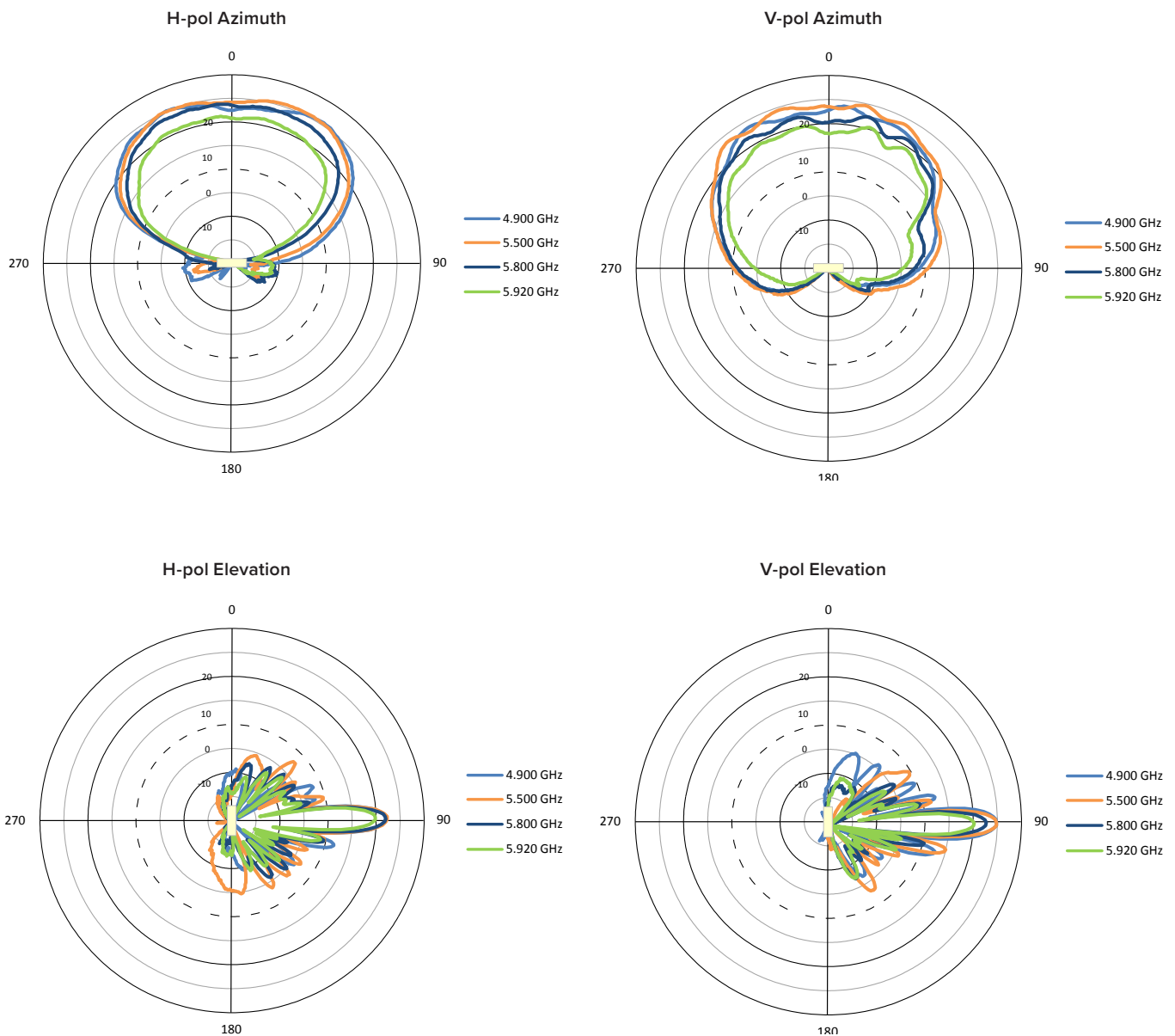
| | |
|----------------|---|
| ENCRYPTION | AES 128 |
| AUTHENTICATION | Internal MAC Address Control List, Radius based Authentication (with VLAN and QoS provisioning) |

ANTENNA

| | |
|-------------------|---|
| MP-10100L-BSU/SUA | Two N-type Connectors with built-in Surge Protection |
| MP-10150L-BS9 | Integrated 2x2 MIMO 16dBi Dual Polarized 90 degree Sector Antenna |
| MP-10150L-BS1/SUR | Integrated 2x2 MIMO 22dBi Dual Polarized 1 foot Panel Antenna |

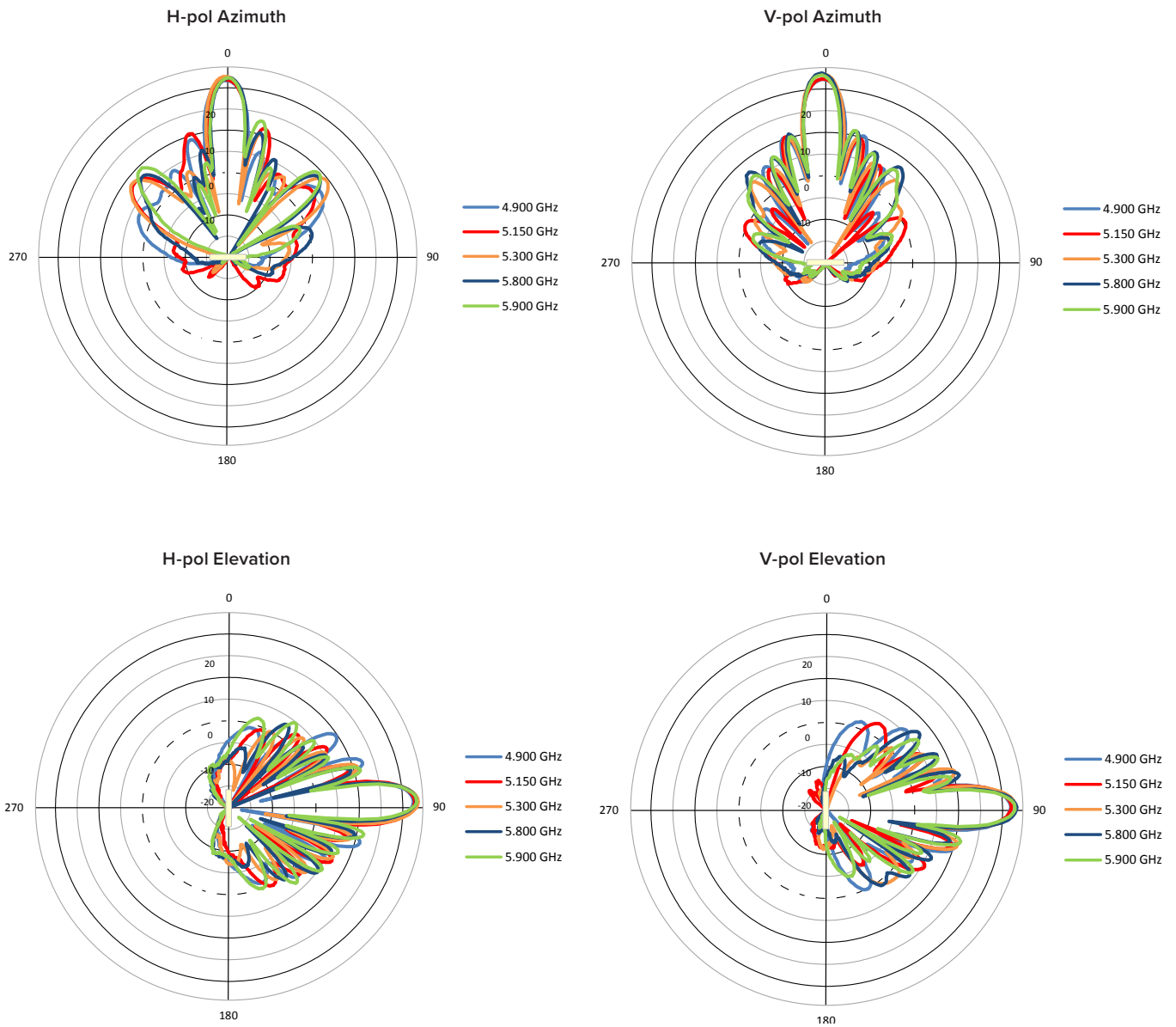
ANTENNA PATTERNS (Sector Mode)

MP-10150L-BS9



ANTENNA PATTERNS (Sector Mode)

MP-10150L-BS1/SUR



QoS

| | |
|------------------------------------|--|
| ASYMMETRIC BANDWIDTH CONTROL | Asymmetric UL/DL committed and maximum information rate per service flow |
| PACKET CLASSIFICATION CAPABILITIES | 802.1p priority, IPTOS, VLAN ID, IP addresses, ports, Ethernet addresses, IP protocol, and EtherType |
| SCHEDULING | Best Effort, Real Time Polling Services |

NETWORK

| | |
|------------------|---|
| MODES | Bridging, Routing (RIP v2 and IP tunneling) |
| IP STACK | IPv4 and IPv6 simultaneously |
| GATEWAY FEATURES | DHCP Server & relay, NAT with Std ALGs, PPPoE end point with Proxy DNS |
| VLAN | 802.1Q: Management VLAN. Transparent, Access, Trunk and Mixed mode. QinQ double tagging |

| POWER | INPUT | OUTPUT |
|-------|---|--|
| | 36 to 57 VDC via Ethernet port1 (Power over Ethernet) | 48 to 57 VDC – 25 Watt on Ethernet port2 (PoE – software controlled) |
| | 12 VDC via Access port | 12 VDC on Access port |
| | Power should not be provided simultaneously on both ports | |

POWER CONSUMPTION

14 Watt typical, 17.5 Watt maximum

| ENVIRONMENTAL SPECS | OPERATING TEMPERATURE | STORAGE TEMPERATURE | HUMIDITY - IP RATING | WIND LOADING |
|---------------------|---|---|----------------------------------|---------------------|
| | -40° to 60°C (-40° to 140° Fahrenheit) | -50° to 70°C (-58° to 158° Fahrenheit) | 100% relative humidity - IP67 | 200 km/h (125 Mph) |
| PHYSICAL SPECS | DIMENSIONS PACKAGED | DIMENSIONS NPACKAGED | WEIGHT (PACKAGED) | WEIGHT (UNPACKAGED) |
| MP-10100-BSU/SUA | 14.56 x 13.0 x 7.87 in (370 x 331 x 200 mm) | 9.84 x 8.66 x 2.83 in (250 x 220 x 72 mm) | 9.92 lbs (4.5 kg) | 4.20 lbs (1.9 kg) |
| MP-10150-BS9 | 18.46 x 7.05 x 21.57 in (469 x 179 x 548 mm) | 14.57 x 14.57 x 4.21 in (370 x 370 x 107 mm) | 13.67 lbs (6.2 kg) | 7.27 lbs (3.3 kg) |
| MP-10150-BS1/SUR | 14.56 x 13.0 x 7.87 in (370 x 331 x 200 mm) | 12 x 12 x 3.40 in (305 x 305 x 85 mm) | 10.91 lbs (4.95 kg) | 5.30 lbs (2.4 kg) |

SAFETY STANDARDS

UL 60950, CAN/CSA-C22.2 No. 60950, IEC 60950, EN 60950 (part -1 and -22)

CERTIFICATIONS

| | |
|---------|--|
| USA | FCC 90Y + 15E (UNII 15.247) |
| CANADA | IC RSS 102 + RSS 111 + RSS 247 |
| EUROPE | RED EN 301 489-1 + EN 301-489-17 + EN 301 893 + EN 302 502 |
| RAILWAY | EN 50155 + EN 50121 + EN 61373 |

PACKAGE CONTENTS

- One Tsunami® MP-10100L-BSU/SUA with two N-type surge protected connectors
Or One Tsunami® MP-10150L-BS9/BS1/SUR with integrated dual polarized antenna
- One power injector and country specific power cord
- One Connector weatherproofing kit (Includes all recommended weatherproofing material)
- One Wall / Pole mounting kit
- One Antenna alignment (RJ11) dongle
- One Grounding kit
- One Quick Installation Guide

MTBF & WARRANTY

>250 000 hours, 2-year warranty, ServPak Extended Support available.

ABOUT PROXIM WIRELESS:

Proxim Wireless is a global leader in advanced wireless broadband and WiFi solutions that deliver high performance and high availability communications. Celebrating 40 years of pioneering wireless solutions, Proxim is recognized for unparalleled reliability, superior performance, and drive for innovation.

© 2025 Proxim Wireless Corporation. All rights reserved. Proxim is a registered trademark and the Proxim logo is a trademark of Proxim Wireless Corporation. All other trademarks mentioned herein are property of their respective owners. Specifications are subject to change without notice.