



GOAOFOEOI

Model Number: GO-WIFICAM01

1080P Full HD WiFi  
Camera for Home Security

## Operation Instruction

Catalog & Packing list	2
Product appearance	3
Network settings	4
Quick start	5-13
Product specification	14
Indicator light status	14
Troubleshooting	15
After-sales service	16

### Packing list

- 1.Camera\*2
- 2.Mounting kit\*2
- 3.Power Supply \*2
- 4.Antenna\*2
- 5.Operation instruction\*1



### Network settings

Note: Please download and install App and connect camera to the App first before mounting camera on the wall. Plug in and power on all cameras near your router for initial setup. Fasten the antennas (if applicable) onto the cameras.

\* Make sure that you have a strong WiFi connection at the location of your cameras.

\* Make sure you know the SSID (WiFi network name) and password of the 2.4GHz WPA-PSK/WPA2-PSK WiFi network that you want your cameras to connect to. Your network cannot be hidden.

\* Make sure your network has at least 1Mbps upload speed for each camera when live viewing or 2Mbps upload speed for each camera when using the cloud service.

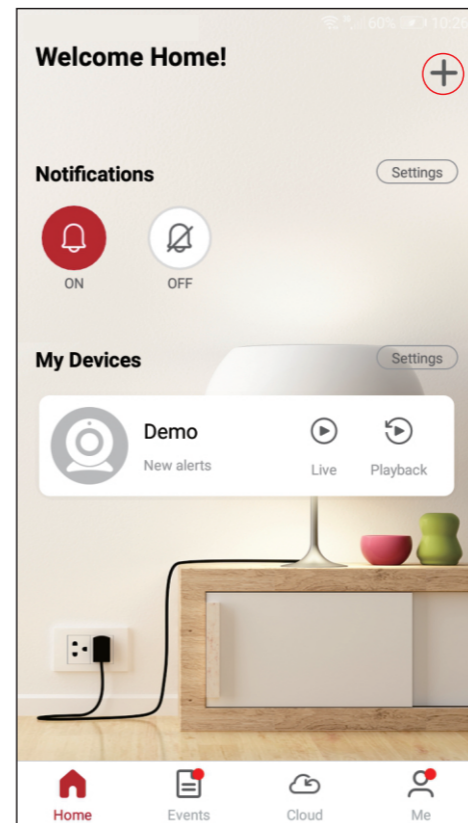
\* Download and install the "meShare" app from Google Play or the App Store (compatibility: iOS 9.0+ or Android 4.0+). Launch the app and sign up for a free maShare account. All of your devices will be bound to this account.



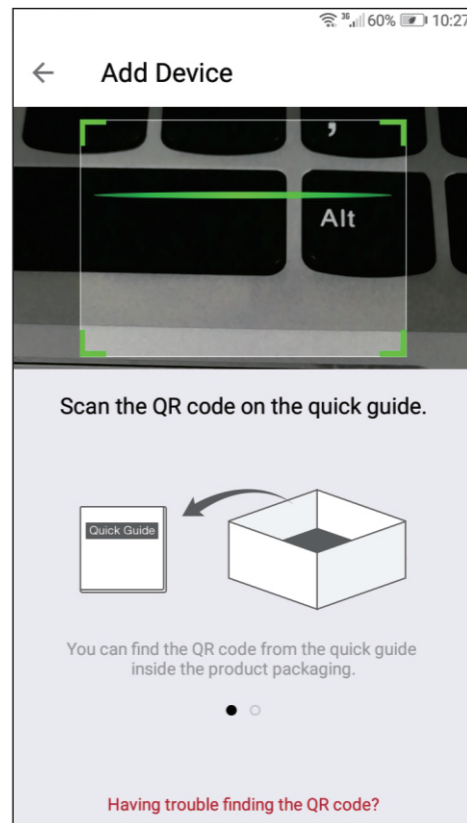
### Quick start

Note: Please download and install App and connect camera to the App first before mounting camera on the wall, Getting Started , In order to set up your device,all you need to do is:

- 1.Download the free "meShare" app from Google Play or the App Store using an Android or iOS mobile device. Launch the app and sign up for a free account.

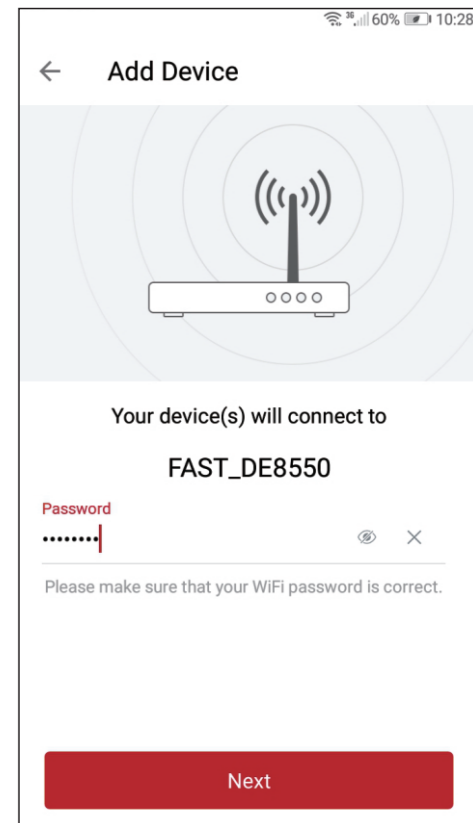


- 3.Select the "QR Code" connection method to connect your device(s). Your device(s) will be added to your "meShare"account.



(Scan the QR code shown on the right when prompted by the App)

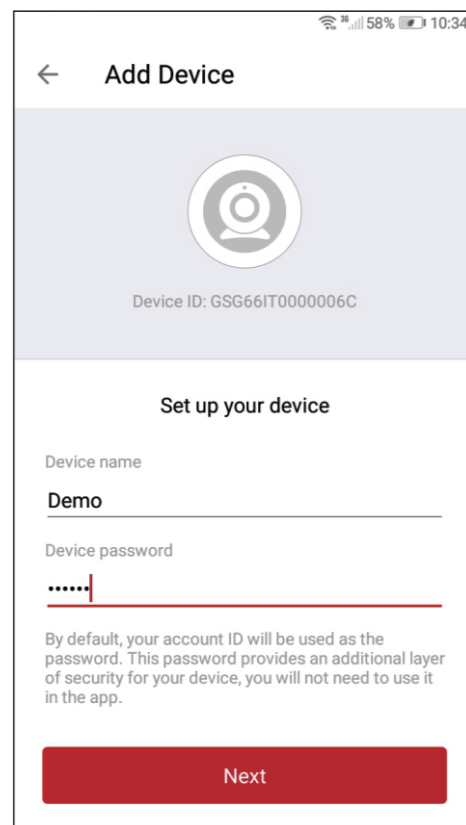
- 4.Enter the password of the WiFi that you want your device(s) to connect to. Please make sure that your WiFi password is correct. Tap "Next" to proceed. Note: The WiFi password is case-sensitive



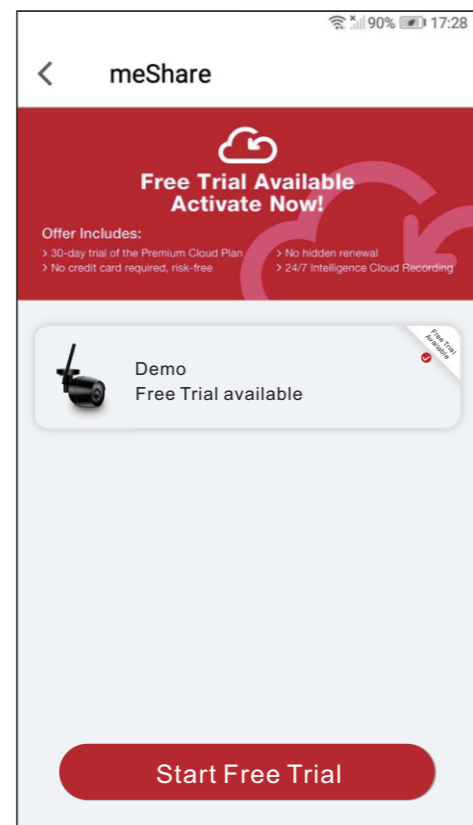
- 5.Steadily hold your phone's display in front of your GOAOFOEOIcamera until you hear "Device connected". The distance between your phone and the camera should be about 8 inches. Note: If you're setting up multiple devices, you will only need to scan the QR code with one of your devices.



6. your device(s) and set a password for it. Tap "Next" to proceed.Note: The password provides an additional layer of security for your devices. You will not need to use this password when accessing your devices from the meShare app. It is not required, but it is highly recommended.



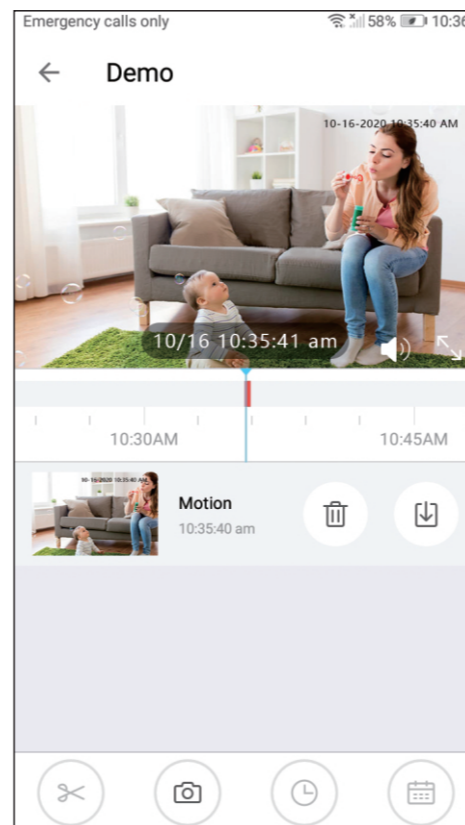
- 7.meShare provides 30-day Free Trial, 24/7 continuous recording on cloud. You can choose to subscribe for the service or not after the trial ends. Motion video clips from the past 12 hours are saved freely on cloud even without the subscription.



- 8.Your device(s) have been successfully configured! Tap "Demo" to finish. You can now share or view your device(s).



9. If there is a suspicious motion, an alert will be generated immediately and automatically save snapshots and videos to micro SD card or cloud storage.



### Product specification

Item	Specification
Image resolution	Max. 1920 X 1080
Camera lens	Field of view: 120°
Infrared LED	12pcs IR-led 10M
Storage media	Micro SD card (Up to 128GB)
Weatherproof Level	IP 65
Adapter requirement	12V 1.5A
Working temperature	-4°F to 140°F
Size	74*64*165(mm*mm*mm)

### Status Light Definitions

Your camera has an LED light that indicates the status of the camera. Please refer to the guide below:

- Blinking red  
Waiting to connect to the network
- Blinking blue  
Connecting to the network
- Solid blue  
Network connection successful

### Troubleshooting

- If you were unable to connect your camera successfully:
  - Make sure that you are connecting to a **2.4GHz WPA-PSK/WPA2-PSK WiFi network**, and your network is not hidden.
  - Please make sure that you entered the network name and password correctly. **Note:** Both are case-sensitive.
  - During the QR code scan, please make sure that your phone's display brightness is high, and avoid glare on your phone's display.
  - Please make sure that your camera is not already bound to another user account.
  - Make sure that you have fastened the antenna (if applicable) onto your camera, and try moving your camera closer to the router for the initial setup.
- (Setting up multiple cameras) If you were able to connect some, but not all of your cameras:
  - Power cycle the camera(s) that are not connected to the WiFi and repeat the setup process.

Note: You can check the status light of the device to see if it has been successfully connected to the WiFi or not. If the status light is blinking red, it means that it has not connected to a WiFi network. If it is solid blue, it means that it is already connected to the WiFi network.

### After-sales service

Thank you very much for choosing our items. If you have any concerns or suggestions,please feel free to contact us via:

Email:  
**goafoeoiservices@163.com**



meShare empowers  
you with 24/7 intelligent recording and  
cutting-edge AI features.



MADE IN CHINA