



# Razor E Prime™ Folding Electric Scooter User Manual

November 4, 2021November 8, 2021

[Home](#) » [Razor](#) » Razor E Prime™ Folding Electric Scooter User Manual 

Razor E Prime™ Folding Electric Scooter User Manual



## Contents [ [hide](#) ]

### 1 In the Box

### 2 Assembly Instructions

### 3 Charging Instructions

### 4 Battery Instructions

### 5 How to Ride the E Prime

### 6 Using the Charger

### 7 Maintenance

### 8 HOW TO RIDE

### 9 BATTERY POWER LEVEL INDICATOR

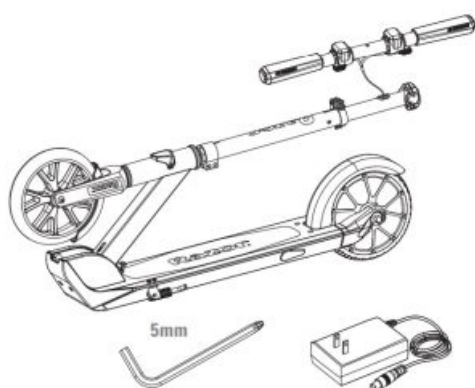
### 10 HOW TO STOP

### 11 Documents / Resources

#### 11.1 References

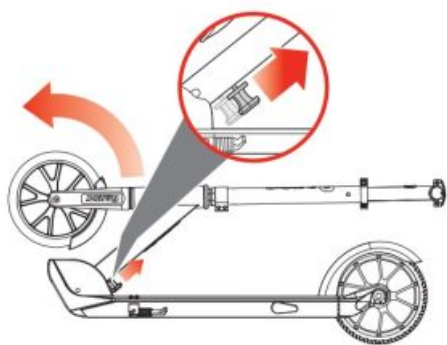
#### 11.2 Related Manuals / Resources

## In the Box



## Assembly Instructions

1



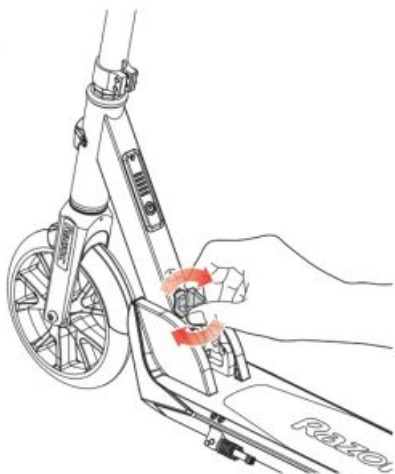
2



3



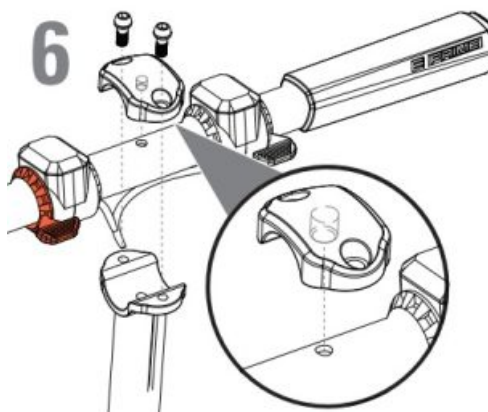
4



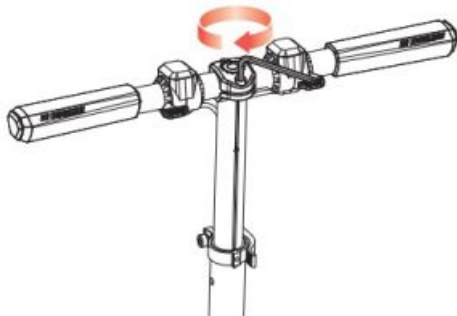
5



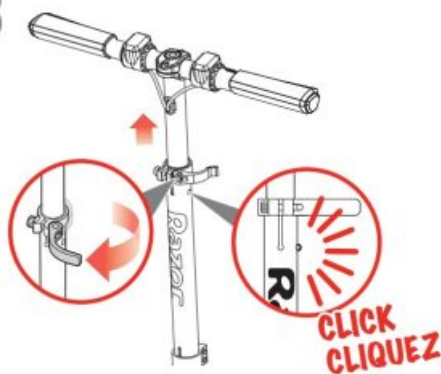
6

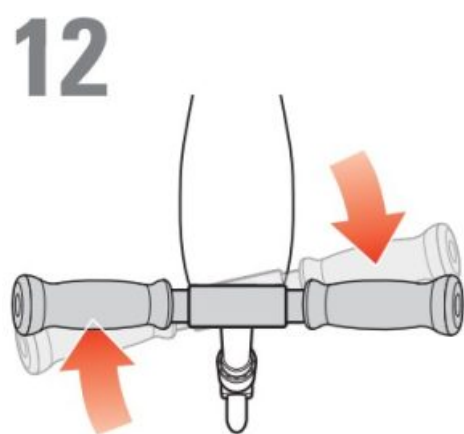
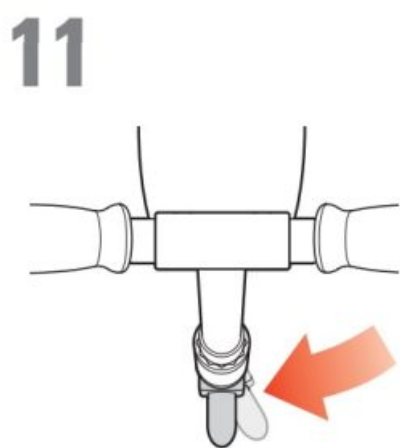
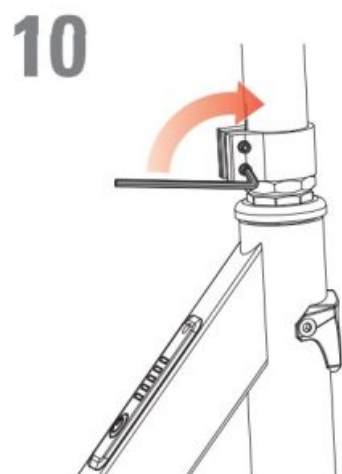
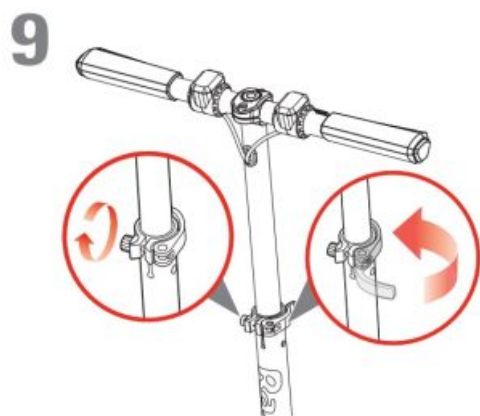


7

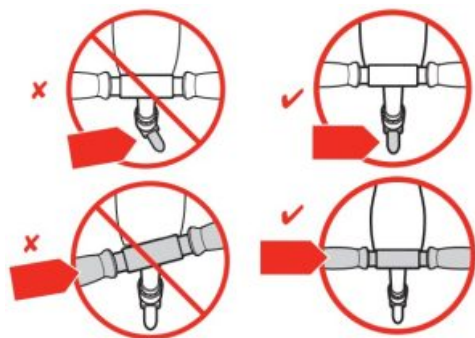
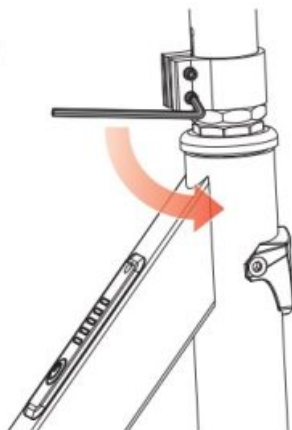


8





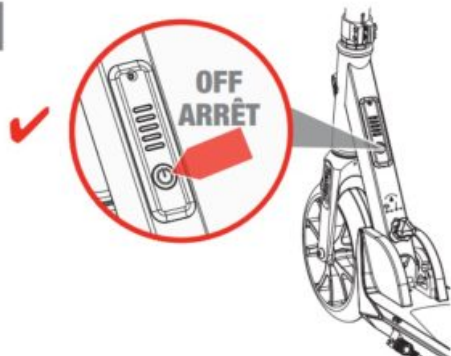
# 13



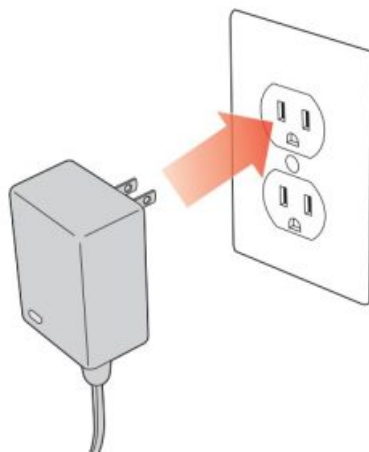
## Charging Instructions

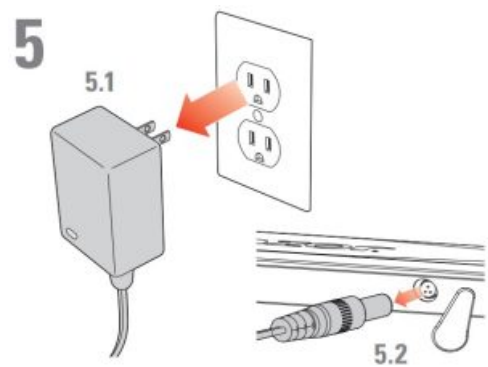
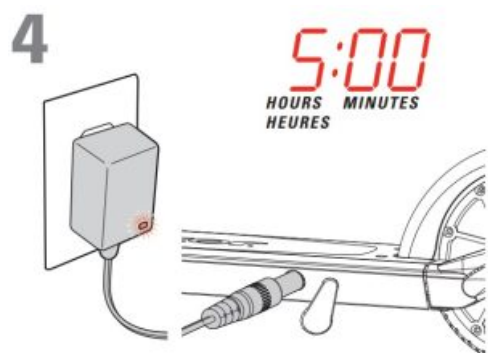
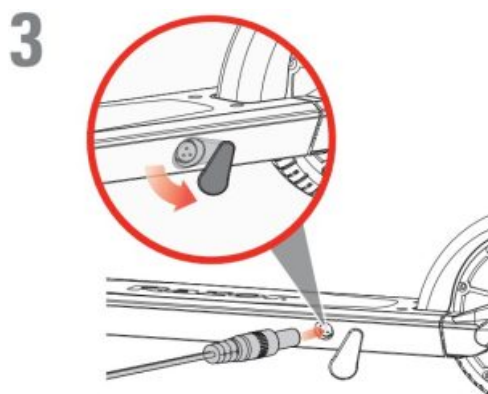
Initial charge time: 5 hours.

### 1



### 2





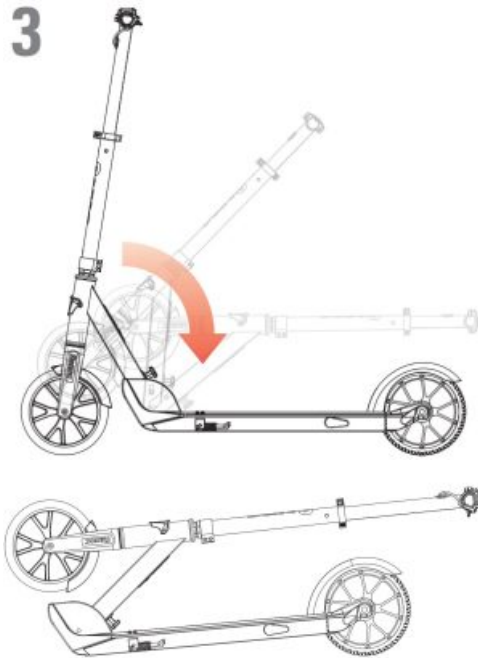
## Battery Instructions



2



3



## **SAFETY PRECAUTIONS** during operation and maintenance

Parents/adult supervisors read this page first

PARENTS/SUPERVISING ADULTS MUST TEACH CHILDREN HOW TO SAFELY RIDE THIS PRODUCT. If the rider fails to use common sense and heed these warnings, there is an increased risk of damage, serious injury or possibly death. Riding this Product Presents Potential Risks.

- Like any riding product, this product can be hazardous (for example, falling off or riding into a hazardous situation). This product is, of course, meant to move and it is therefore possible for a rider to lose control or otherwise get into dangerous situations.
- Both children and adults responsible for supervising them must recognize that if such things occur, a rider can be seriously injured or possibly die, even when using safety equipment and taking other safety precautions.

## **USE AT YOUR OWN RISK AND USE COMMON SENSE.**

Parental and Adult Responsibility and Supervision are Necessary Because this product can be hazardous – and not every product is appropriate for every age or size of child – different age recommendations are found within this category of product which are intended to reflect the nature of the hazards and the expected mental or physical ability, or both, of a child to cope with the hazards. Parents and supervising adults need to select riding products appropriate for the age of the child who will ride this product and take care to prevent children who may be too immature or inexperienced for a product's characteristics to endanger themselves around it.

- The recommended rider age for this product is 14 years of age and older. Any rider, even 14 or older, unable to



fit comfortably on this product should not attempt to ride it. A parent's decision to allow his or her child to ride this product should be based on the child's maturity, skill and ability to follow rules. Keep this product away from small children and remember that it is intended for use only by persons who are, at a minimum, completely comfortable and competent while operating this product.

- Maximum rider weight 80 kg.
- Persons with any mental or physical conditions that may make them susceptible to injury, impair their physical dexterity or mental capabilities to recognize, understand, and follow safety instructions and to be able to understand the hazards inherent in E Prime use, should not use or be permitted to use products inappropriate for their abilities. Persons with heart conditions, head, back or neck ailments (or prior surgeries to these areas of the body), or pregnant women, should be cautioned not to operate such products.

### **Check E Prime Before Use – Maintain After Use**

- Before use, confirm that any and all guards or other covers are in place and in serviceable condition. Check that the wheels are free of flat spots from wear and that the brake is functioning properly.
- After use, maintain and repair this product in accordance with the manufacturer's specifications in this manual. Use only the manufacturer's authorized replacement parts. Do not modify this product from the manufacturer's original design and configuration.

Acceptable Riding Practices and Conditions – Parents/adults should discuss these rules with their children. Protective equipment should be worn. Not to be used in traffic.

### **Where to Ride the E Prime**

- Always check and obey any local laws or regulations which may affect the locations where this product may be used. Keep safely away from autos and motor vehicle traffic at all times and only use where allowed and with caution.
- Ride defensively. Be careful to avoid pedestrians, skaters, skateboards, bikes, children or animals who may enter your path. Respect the rights and property of others.
- This product is intended for use on flat, dry surfaces such as pavement or level ground, without loose debris such as sand, leaves, rocks or gravel.
- Wet, slick, bumpy, uneven or rough surfaces may lessen traction and increase the risk of accidents.
- Do not ride this product in mud, ice, puddles or water.
- Watch out for potential obstacles that could catch your wheel or force you to swerve suddenly or lose control.
- Avoid sharp bumps, drainage grates, and sudden surface changes.
- Do not ride this product in wet or icy weather and never immerse this product in water, as the electrical and drive components could be damaged by water or create other possibly unsafe conditions.
- Never risk damaging surfaces such as carpet or flooring by use of this product indoors.
- Never use near steps or swimming pools.

### **How to Ride the E Prime**

- **NOTE:** This product must be moving at 5 km/h (3 mph) before the motor will engage.
- Do not activate the throttle unless you are on the product and in a safe outdoor environment suitable for riding.
- Hold the handlebars at all times while you are riding.
- Do not touch the brakes or hub motor on your scooter when in use or immediately after riding as these parts can become very hot.
- Avoid high speeds, as you might have on downhill rides, where you might lose control.
- Do not ride at night or when visibility is limited.
- Do not attempt or do stunts or tricks on the product. The product is not strong enough to withstand misuse and abuse such as jumping, curb grinding or any other type of stunts. Racing, stunt riding, or other maneuvers also increase the risk of loss of control, or may cause uncontrolled rider actions or reactions. All of these could result in serious injury or possibly death.
- Never allow more than one person at a time to ride this product.
- Do not allow hands, feet, hair, body parts, clothing, or similar articles to come in contact with moving parts or wheels.
- Never use headphones or a cell phone when riding.
- Never hitch a ride with a vehicle.

### **Proper Riding Equipment, Clothes, Shoes**

- Always wear proper protective equipment, such as an approved safety helmet (with chin strap securely buckled), elbow pads and kneepads. A helmet may be legally required by local law or regulation in your area. In addition, a long-sleeved shirt, long pants, and gloves are recommended.
- Always wear athletic shoes (lace-up shoes with rubber soles), never ride barefoot or in sandals, and keep shoelaces tied and away from the wheels, motor and drive system.

## Using the Charger

- Never modify the electric system. Alteration could cause a fire.
- Use ONLY the E Prime charger.
- Initial charge time: 5 hours.
- Recharge time: up to 4 hours, even if the light turns green. Recommended maximum charging time is 24 hours.
- Turn off after each ride. The battery may be unable to recharge if left "ON" without use.
- Do NOT charge at or below freezing (0° C).
- Do not allow charger or battery pack to overheat. If they seem warm, allow to cool down. Charge only at room temperature.
- Do not place product or charger in the sun or warm environment. Keep at normal room temperature.
- Battery pack should not be disassembled, crushed, punctured, opened or otherwise mutilated.
- The charger supplied with this product should be regularly examined for damage to the cord, plug, enclosure and other parts.
- In the event of such damage, the product must not be charged until the charger has been repaired or replaced.
- The charger is not a toy. Charger should only be operated by an adult.
- Do not operate charger near flammable materials or an open flame.
- Unplug charger and disconnect from the product when not in use.
- Do not exceed charging time.
- Always disconnect product from charger prior to wiping it down or cleaning with a damp cloth

## Maintenance

- Always inspect product before riding and regularly maintain it. Replace worn or damaged parts immediately.
- Check that the steering system is correctly adjusted and that all connection components are firmly secured and not broken.
- Check brake for proper function. When you press on the electronic brake (on handlebar with your finger) or step on the rear-fender brake with your foot, brake should provide positive braking action.
- Under normal circumstances and conditions, the wheels and bearings are maintenance free.
- Regularly check that the various screwed parts are tight.
- No modifications can be made that can impair safety.
- Wipe with a damp cloth to remove dirt.
- Use only authorized Razor replacement parts.

Failure to use common sense and heed the above warnings further increases risk of serious injury. Use at your own risk and with appropriate and serious attention to safe operation. Use caution.



**CONTAINS LITHIUM-ION BATTERY PACK. BATTERIES MUST BE RECYCLED. UL 2271 COMPLIANT**

## HOW TO RIDE

Do not activate the thumb throttle unless you are on the E Prime and in a safe, outdoor environment suitable for riding.

Put kickstand up. Press the power button (A), the LEDs will light up.

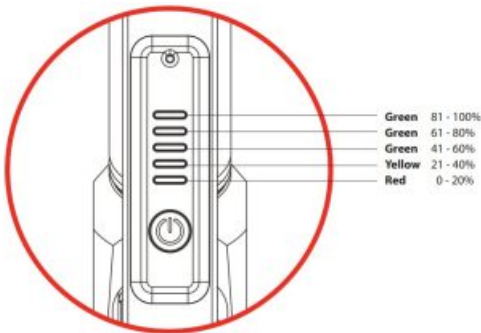
Get on the scooter and place both hands on the handlebars. Kick to start (B), and then push the thumb throttle (C).



**NOTE:** Electric scooter must be moving at least 5 km/h (3 mph) while engaging throttle to engage motor.



## BATTERY POWER LEVEL INDICATOR



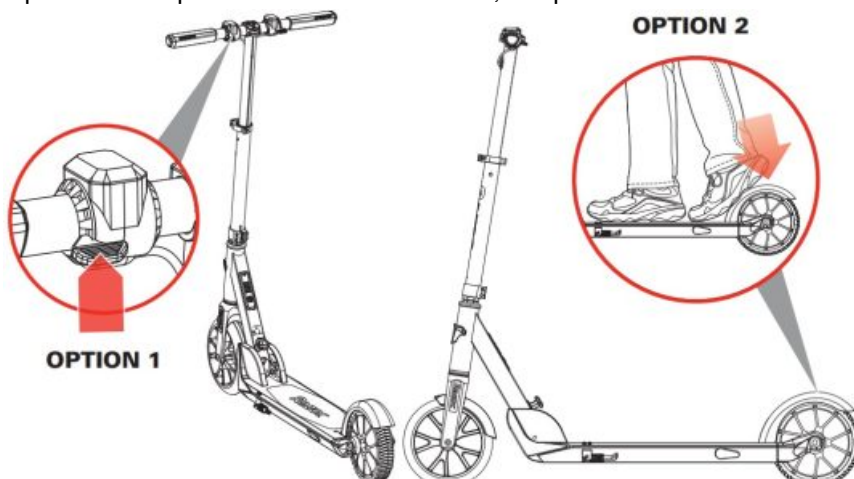
- 3 Green + 1 Yellow + 1 Red Indicator Lights – Battery is sufficiently charged.
- Yellow + Red Indicator Lights – Charge product as soon as possible. If you continue to ride the product, the yellow light will turn off indicating low power.
- Red Indicator Light – Stop riding and charge product immediately

## HOW TO STOP

For controlled stops, apply the brake by pressure on the rear-fender brake or electronic brake (on handlebar). Razor recommends that you practice applying the brake options at various speeds and in an open area free from obstructions before riding your scooter around others.

Option 1 – Press the electronic brake (on handlebar), the power will cut off and then product will slow to a stop.

Option 2 – Step on the rear-fender brake, the power will cut off and then product will slow to a stop.



**NOTE:** As an additional safety feature, the scooter is designed to cut power to the motor when either brake option is applied.

**NOTE:** Motor will re-engage, (without having to kick to start), if brake is released and throttle is applied before scooter has slowed down to under 5 km/h (3 mph).

**NOTE:** Practice riding only in wide open areas clear from curbs, parking blocks and other obstacles. Impacting the wheels against any hard surface can damage the wheels. Wheels are not covered under the limited warranty.

**Printed for Razor USA LLC.**

Copyright ©2003-2018 Razor USA LLC. All rights reserved. Razor® and the Razor logo design are among the registered trademarks of Razor USA LLC and/or its affiliated companies in the United States and/or select foreign countries. E Prime™ is a trademark of Razor USA LLC.

[www.razor.com/pa](http://www.razor.com/pa)

## Documents / Resources



[Razor E Prime™ Folding Electric Scooter](#) [pdf] User Manual  
Razor, E Prime, Folding, Electric, Scooter



[Razor E Prime Folding Electric Scooter](#) [pdf] User Manual  
E Prime, Folding Electric Scooter

## References

- [horas.de – webdesign . grafik . typografie . digital imaging . advertising . werbung . unterricht . dozent . desktop publishing . freehand . quark xpress . photoshop . macintosh . printwerbung . elektronische bildbearbeitung . typographie . graph](#)
- [horas.de – webdesign . grafik . typografie . digital imaging . advertising . werbung . unterricht . dozent . desktop publishing . freehand . quark xpress . photoshop . macintosh . printwerbung . elektronische bildbearbeitung . typographie . graph](#)

## Related Manuals / Resources

### [Mi Electric Scooter Manual](#)

Mi Electric Scooter Manual - Download [optimized]Mi Electric Scooter Manual - Download

### [Mi Electric Scooter Pro Manual](#)

Mi Electric Scooter Pro Manual - Download [optimized]Mi Electric Scooter Pro Manual - Download



### [GLOBBER Foldable Electric Scooter Instruction Manual](#)

Foldable Electric Scooter [www.globber.com](http://www.globber.com) ID DEVELOPMENT LIMITED  
Room 1302. 13/E Chevalier House. 45 - 51 Chatham Road South,...



### [Razor C25/C25 SLA Electric Scooter User Manual](#)

C25/C25 SLA FOLDING MECHANISM - STEM REPLACEMENT PART # W13113290055 Required Tools: (Not included) A. 4 mm Allen...

[Manuals+](#),

- [home](#)
- [privacy](#)