



## Tire Pressure Monitoring System

### User Manual

Thank you for choosing MOMAN product. Please read this manual carefully before use and follow all instructions mentioned herein.

### Important Note:

If there is any problem, please scan the QR code to get operation video or after-sales support.



### 2 TPMS Packing List



Sensor x2



Screw x2



Wrench x1

### 4 TPMS Packing List



Sensor x4



Screw x4



Wrench x1

### Product Parameters



Sensor size	22 * 17 * 13mm
Chip	Low power Bluetooth
Transmission method	Bluetooth broadcast packet sending
Working voltage	2.1-3V
Temperature error range	± 3
Pressure error range	± 0.2BAR
External battery	CR1632 (120MAH)
Applicable vehicle models	2/4/6
Product model	TP01

### Important Note:

1: The product should not be soaked in water for a long time and can prevent splashing

2: The product is equipped with a built-in battery, which can be replaced automatically when the battery is depleted

3: After replacing the battery, tighten the cap to prevent it from falling and damaging the internal circuit

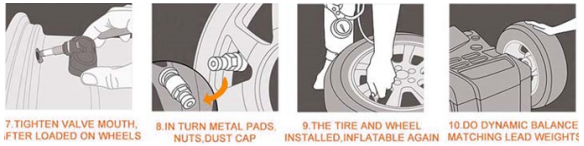
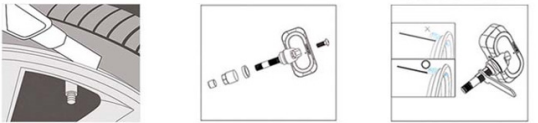
### Product Operation

#### 1.Installation Method of External Tire Pressure

- ① Install the anti-theft washer firstly.
- ② Tighten the sensor.
- ③ Use the wrench to tighten the washer by counter clock wide.



#### 2.Installation Method for Built-in Tire Pressure



### Download Application

#### 1.For Android System Users

Please search the "DJTPMS" driver on Google Play

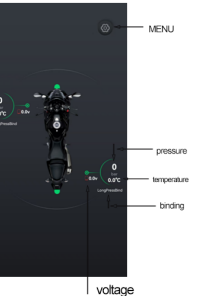
#### 2. For IOS System Users

Please search the "DJTPMS" driver on AppStore

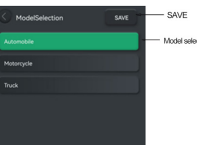
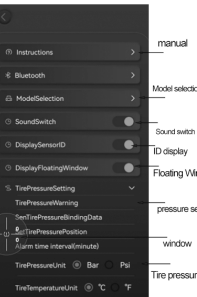
### APP Operation

1) Open the APP and enable Bluetooth (location information enabled) as shown in Figure 4, then click on the settings icon in the upper right corner as shown in the menu bar of Figure 5. Please first click on the operation method in the user manual options, and then select the vehicle model: 2/4/6-wheel vehicle model. And the description of various functions in Figure 6.

2) Tire pressure monitoring content: tire pressure, temperature, battery level information. Finally, click on 'Save Parameters' to exit.



3) Tire pressure usage method: After selecting the car model on the APP page, first press and hold the 'bind' position. When it flashes, twist the sensor onto the tire. At this point, the tire pressure binding is complete, and the current tire pressure, temperature, and battery level information will be displayed on the phone (Bluetooth sensors do not distinguish tire position front/back/left/right). Follow this method to bind other tires in sequence.



### Warranty

#### Warranty rules

1. From the date of purchase, the product will be replaced within one month if quality problems occur, and guaranteed within one years.
2. Within the warranty period, any defect originating from the quality of the product, we offer free repair or replacement of spare parts.

Please note the following circumstances are not within the scope of the maintenance.

1. Produce malfunction or damage caused by failure to install, use, maintain or store according to the instructions.
2. Alteration/tearing off of product labels, or product damage caused by disassembly/maintenance without authorization.
- 3.The warranty period has expired.
- 4.Product damage due to force major factors (such as earthquake, flood, fire, lightning strike, etc.) or artificial damage.

#### Disclaimer

Our company does not assume any responsibility for product damage or any other accidents caused by product overheating or short circuit caused by failure to follow instructions in this manual.

### Moman (UK) Limited

Unit 25 Basepoint Business Centre, Aviation Park, West Christchurch, United Kingdom BH23 6NX  
www.momanx.com  
@MomanGlobal  
https://moman.co/youtube