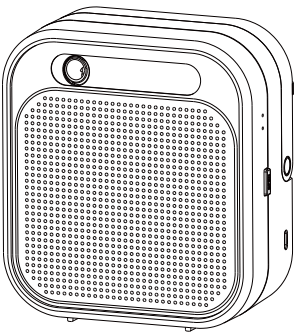


# Product Manual

## Aroma Diffuser

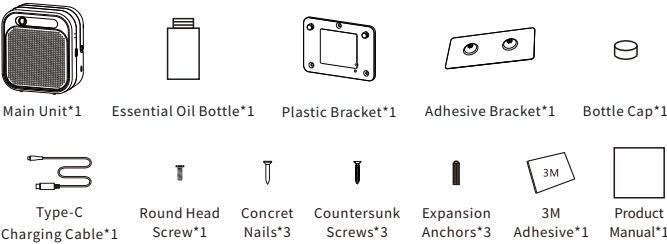
Model:HLS301+



- Do not mix the fragrance with any other liquid
- Do not remove any piece or part of the diffuser
- This diffuser is only for use with our Scent Collection

### Product Introduction

#### Package List



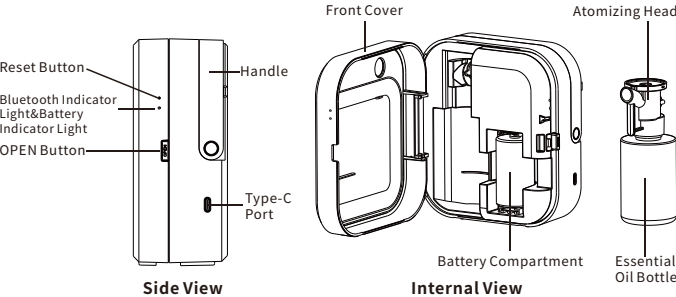
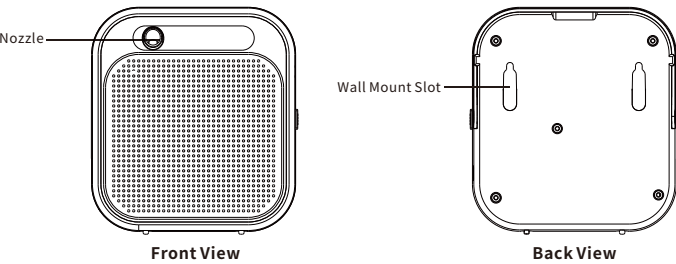
### Specification

Name:Aroma Diffuser
Model:HLS301+
Net Weight:483g
Bottle:100ml
Input:Type-C 5V =1A
Power:0.95W
Battery:D Size Battery
Dimension:143*159*66mm/0.4*0.5*0.2ft
Coverage:25㎡/269ft²; 75m³/2648ft³

【Grade and Working Period】				
Grade	Work Time(s)	Pause Time(s)	Consume(g/h)	Battery Life(day)
G1	3s	360s	0.10	100
G2	3s	270s	0.13	80
G3	3s	180s	0.20	55
G4	3s	100s	0.36	32
G5	5s	100s	0.60	20
Custom	3-7s	80-900s	/	/

**Note:**  
1.The above data is based on SCENTA laboratory tests. The data may vary depending on the type of essential oil and environmental conditions. Please refer to actual usage.  
2.It is recommended to use essential oils with a viscosity not exceeding 30 mPa · s.

### Structure



### 【Usage Instructions】

#### Indicator Light Description

Indicator Light Name	Operation	Status Description
Bluetooth Indicator (Blue)	Power connected	blue light stays on for 2 seconds, then flashes according to corresponding function.
	APP operation	Blue light stays on when connected. off when disconnected. flashes briefly when receiving signals.
Battery Indicator(Same as Bluetooth indicator light, and the battery indicator light is red.)	Fully charged: Light off. Low battery: Flashes once every 3 seconds. Power on waiting for supercapacitor charging: Rapidly flashes. Ultra-low battery: Light off.	

### Button Description

Button Icon	Button Name	Button Functions
OPEN	OPEN Button	Press down to open the front cover.
○	Reset Button	Short press: Restore default password (default: 8888).
		Long press: Restore all settings to factory defaults.

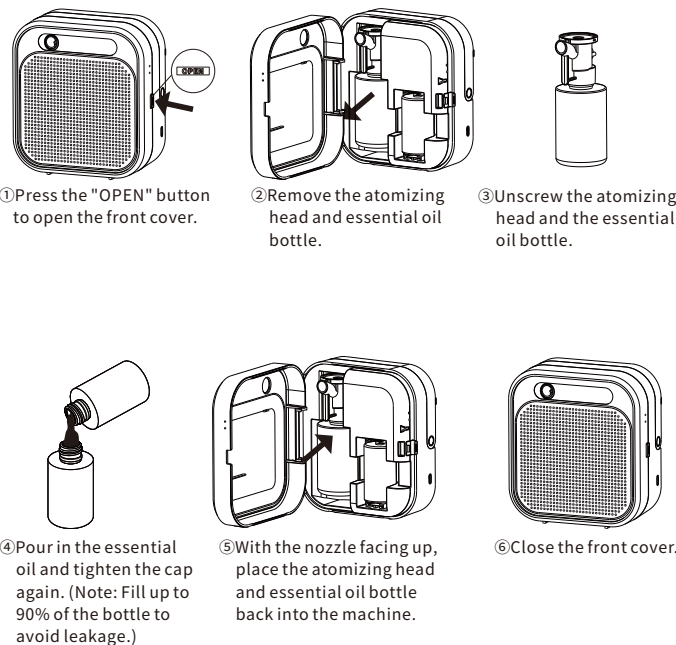
### Buzzer Description

Operation	Buzzer Status
Power connected	One beep. (Note: Will not beep under ultra-low battery to avoid repeated MCU resets.)
Bluetooth operation	Beeps once when receiving Bluetooth data.
Reset Button Operation	Short press to reset password: One beep.
	Long press to factory reset: Long beep. (Note: Will not beep under ultra-low battery to avoid repeated MCU resets.)

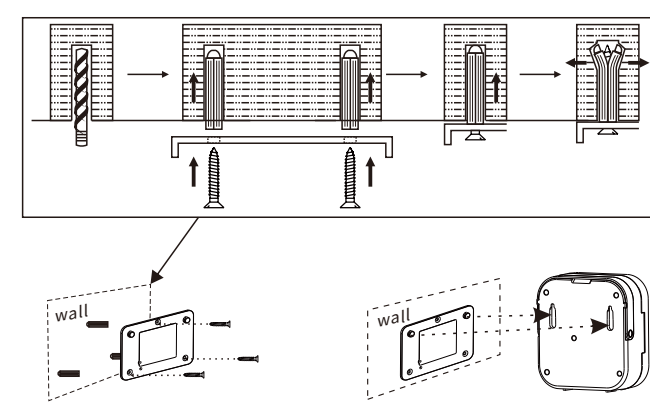
### Other Notes

Default Mode: It will work continuously for 24 hours at level 1. When the machine is powered on without further operation or after factory reset, it will run in default mode.  
Reset Methods: Short press: to reset to default password (8888).  
Long press: restore to factory settings.

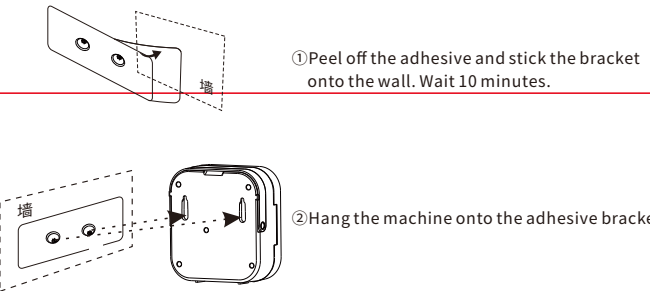
### Fragrance Oil Refill Steps



### Wall Mount Installation Steps(Plastic Bracket)



### Wall Mount Installation Steps(Adhesive Bracket)



**Note:**1.The wall-mounted bracket should only be adhered to tile surfaces. Before applying the adhesive, ensure the tile surface is clean and smooth.  
2.The installation location should meet one of the following conditions:  
(1)The height from the floor is more than 180cm.  
(2)The distance from the ceiling is between 20cm and 30cm.

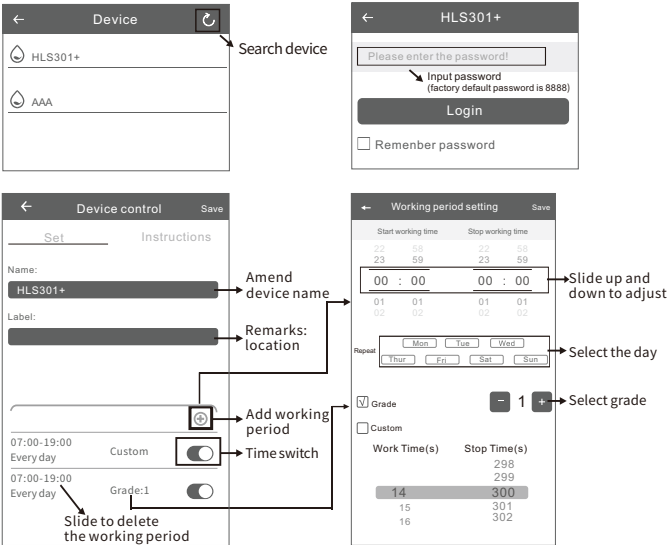
### Replace the Battery Steps

- Open the machine.
  - Remove the old battery.
  - Insert a new battery.
  - Close the machine.
- Note:**  
(1)Only use D size batteries.  
(2)Do not recharge the battery.  
(3)Dispose of used batteries in appropriate recycling bins in sealed bags.  
(4)Remove the battery if the device is not in use for an extended time.  
(5)Do not short-circuit the power terminals.

APP Operating Instructions

Where to get the app:  
Please search "Home Luxury Scents" in Google play or App store.

Note:  
1. Please make sure that the Bluetooth function is turned on;  
2. Please make sure that the location function of the mobile phone is turned on.



Amend password

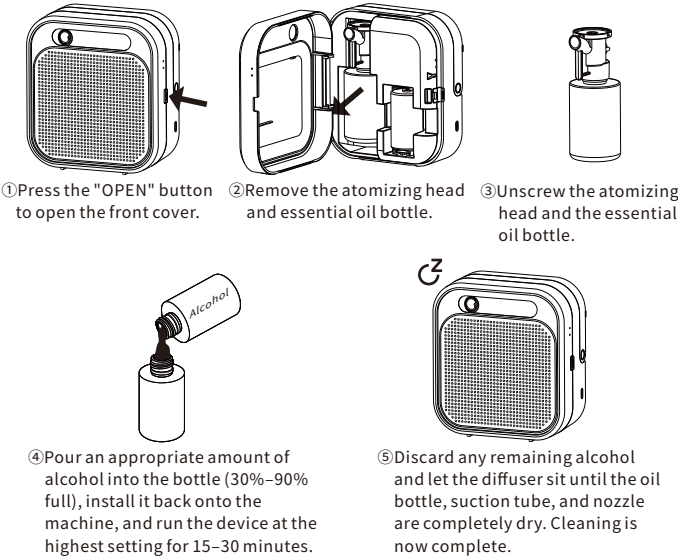


If you forget your password, short-press the reset button to restore the default password.

【Cleaning and Maintenance】

When to Clean the Device:Cleaning is required in the following situations:  
1.When change to a different essential oil.  
2.When you notice a decrease in mist output performance.  
Tip: We recommend regular cleaning—about once every 3 months.

Cleaning Steps



【 ⚠ WARNING】

Safety  
InstructionsTo ensure safe use and prevent harm or property damage, please follow these safety precautions. Failure to comply with these warnings may result in accidents.  
**This product is not designed for the following situations:**  
- Use by unattended infants, individuals with disabilities, or those with cognitive impairments.  
- Use as a toy by young children.

**Usage and Storage Instructions**  
1. This aroma diffuser is designed for use with essential oils. Please read the manual carefully before use.  
2. This product is not suitable for individuals with weakened health (including children). Elderly, pregnant individuals, and those with physical, sensory, or intellectual impairments should consult a doctor before use. Those lacking experience or knowledge, especially children, must be supervised by a responsible person to ensure safe use. Otherwise, they should be prevented from accessing the device.  
3. The optimal operating temperature for the machine is 20-35°C, with a relative humidity of <85%. Diffusion performance may vary depending on environmental temperature and humidity.  
4. Store essential oils in a cool, dry place with the cap securely closed, away from direct sunlight. The recommended storage temperature is around 25°C.  
5. Dispose of the product and protective packaging materials in accordance with local regulations.

**Prohibited Guidelines**  
1. Keep away from fire sources.  
2. Do not ingest essential oil; seek medical attention if swallowed.  
3. Do not use for purposes other than space diffusion; do not apply fragrance essential oil directly to the skin.  
4. Avoid extreme temperatures (below -5°C or above 40°C).  
5. Use only the provided power adapter. Please do not use a fast charger with this product.

**Mandatory Guidelines**  
1. Keep out of reach of children and pets to prevent accidental ingestion. Supervise children to ensure they do not play with the device.  
2. Do not modify, disassemble, or repair the machine unless you are a qualified technician. If a malfunction occurs, contact customer service from the original purchase channel.  
3. Stop using the device immediately if any abnormalities occur during or after use.  
4. Place the machine on a level surface and keep it upright after installation. Tilting or placing the device flat may cause oil leakage or malfunction.  
5. Wipe up any spilled essential oil immediately.  
6. Battery disposal: Wear gloves, place leaking batteries in a plastic bag, and dispose of them properly to avoid environmental contamination.

**Potential Risks of Injury or Property Damage**  
The following actions may cause electric shock, short circuits, or fire hazards:  
--Do not expose the machine or the TYPE-C port to moisture.  
- Do not use overloaded power outlets, damaged cords, or faulty plugs.  
- When adding essential oil, avoid excessive pressure to prevent leakage and damage to machine components.  
- Do not pull, crush, cut, or tamper with the power cord.  
- To prevent malfunctions or damage, do not disassemble the machine during use.  
- Before disposing of the device, remove the battery. Ensure the device is powered off before removal, and dispose of the battery safely.  
- If the adapter, charging cable, or power cord is damaged, it must be replaced with a specialized component provided by the manufacturer or authorized service provider.  
- Use only the specified low-voltage power supply as marked on the device.  
- Only use the power adapter included with the product.  
- Use only the recommended evaporation medium. Using other substances may pose toxic or fire risks.



【Troubleshooting】

If the aroma diffuser is not functioning properly, please check the following and attempt to resolve the issue.

Issue	Possible Causes	Solutions
Device not working	The battery has run out of power.	更换电池或者使用Type-C数据线连接电源
No mist or weak mist	The atomizing core is clogged.	Clean the atomizing core with a professional cleaner to remove internal residue or replace it with a new one. (Recommended cleaning every 3 months.)
	The liquid tube is not securely attached.	Check and tighten the loose parts.
Oil leakage	The gasket between diffuser head and bottle may be loose or damaged.	Secure the bottle properly or replace the gasket if damaged.
	The bottle is not properly secured.	Check and tighten the loose parts.
Liquid spray	The gasket between diffuser head and bottle may be loose or damaged.	Secure the bottle properly or replace the gasket if damaged.
	The atomizing core is clogged.	Clean the atomizing core with a professional cleaner to remove internal residue or replace it with a new one. (Recommended cleaning every 3 months.)
	The device is tilted.	Ensure the device remains upright during use.
Unusual noise	The essential oil level is too high.	Do not overfill the bottle—keep the essential oil level below 90% capacity.
	The air pump is not secured.	Inspect and re-secure the pump if loose.

【FCC Statement】

This device complies with part 15 of the FCC Rules. Operation is subject to the following two conditions:  
(1) This device may not cause harmful interference, and  
(2) this device must accept any interference received, including interference that may cause undesired operation.

This equipment has been tested and found to comply with the limits for a Class B digital device, pursuant to part 15 of the FCC Rules. These limits are designed to provide reasonable protection against harmful interference in a residential installation. This equipment generates, uses and can radiate radio frequency energy and, if not installed and used in accordance with the instructions, may cause harmful interference to radio communications. However, there is no guarantee that interference will not occur in a particular installation. If this equipment does cause harmful interference to radio or television reception, which can be determined by turning the equipment off and on, the user is encouraged to try to correct the interference by one or more of the following measures:  
- Reorient or relocate the receiving antenna.  
- Increase the separation between the equipment and receiver.  
- Connect the equipment into an outlet on a circuit different from that to which the receiver is connected.  
- Consult the dealer or an experienced radio/TV technician for help.

FCC Caution: Any changes or modifications not expressly approved by the party responsible for compliance could void the user's authority to operate the equipment. This transmitter must not be co-located or operating in conjunction with any other antenna or transmitter. Not applicable

RF Exposure  
This device complies with FCC radiation exposure limits set forth for an uncontrolled environment. This equipment should be installed and operated with minimum distance 20cm between the radiator & your body. be installed and operated with minimum distance 20cm between the radiator & your body.

【ISED Statement】

**Francais :** This device contains licence-exempt transmitter(s)/receiver(s) that comply with Innovation, Science and Economic Development Canada's licence-exempt RSS(s). Operation is subject to the following two conditions:  
(1) This device may not cause interference.  
(2) This device must accept any interference, including interference that may cause undesired operation of the device.  
The digital apparatus complies with Canadian CAN ICES - 3 (B)/NMB - 3(B).

**English:** this device contains license-free transmitters/receivers that are compliant with innovation, science and economic development Canada's license-exempt RSS.  
The holding is subject to the following two conditions:  
(1) this device must not cause interference.  
(2) this device must accept any interference, including interference that may cause unwanted operation of the device.  
Canadian compliant ices digital camera can-3 (b)/NMB-3 (b).

This device meets the exemption from the routine evaluation limits in section 6.3 of RSS 102 and compliance with RSS 102 RF exposure, users can obtain Canadian information on RF exposure and compliance.

This device complies with the standard assessment limit exemption in section 6.3 of CNR - 102 and compliance with RSS 102 of rf exposure, users can obtain Canadian data on rf field exposure and compliance.

This equipment complies with Canada radiation exposure limits set forth for an uncontrolled environment.

This equipment complies with Canadian radiation exposure limits for an uncontrolled environment.

This equipment should be installed and operated with a minimum distance of 20cm between the radiator and your body.

This equipment should be installed and used at a minimum distance of 20 cm between the radiator and your body.

SAVE THESE INSTRUCTIONS