

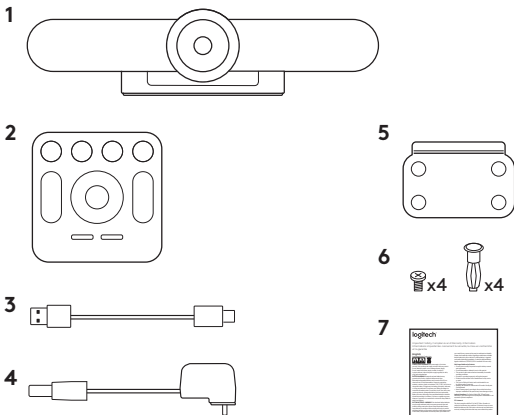
# MeetUp

Setup Guide | Guide d'installation



logitech®

## WHAT'S IN THE BOX

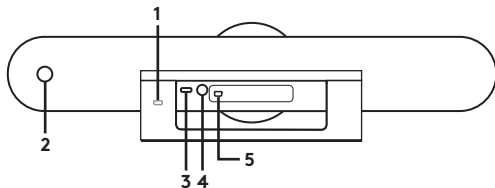


1. MeetUp camera and speakerphone unit
2. Remote control
3. 5m USB cable

4. Power adapter
5. Wall mounting bracket
6. Wall mounting hardware
7. Documentation

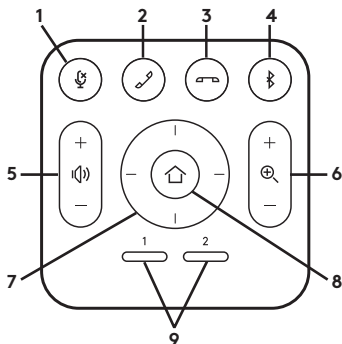
## WHAT'S WHAT

### CAMERA SPEAKERPHONE



- 1. Security slot
- 2. Remote control pairing
- 3. USB
- 4. Power
- 5. Optional expansion microphone

## REMOTE



- 1. Microphone mute
- 2. Call answer
- 3. Call end
- 4. Bluetooth® pairing
- 5. Volume up/down
- 6. Zoom in/out

- 7. Camera pan/tilt
- 8. Camera home
- 9. Camera preset

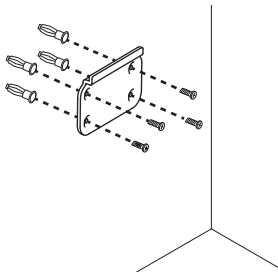
\* Please note that not all applications support call answer and end buttons.

**Thanks for buying MeetUp.** We think you'll find the extra wide field of view will help everyone feel included in the meeting, enhancing communication.

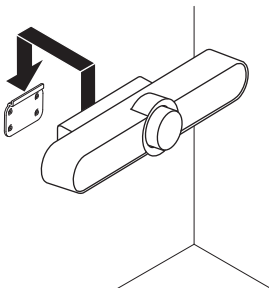
## PLACEMENT

We recommend placing the camera as close to eye level as possible. Best results typically come from mounting below the monitor.

1. Place on a table or shelf near the monitor.
2. Connect the cables.
3. Mount on the wall:
  - a. Attach bracket to the wall.  
Please use the appropriate type of screws for your wall type.



- b. Attach the camera to the bracket.

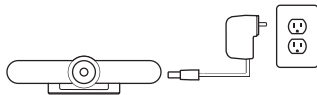


4. Mount to the TV: An optional TV mount bracket is available on [Logitech.com](https://Logitech.com).

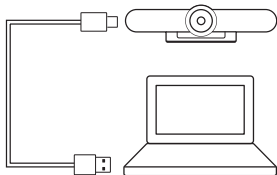
## CONNECTION

Connecting MeetUp is the same whether you plan on using a dedicated computer in the room, or your team members bring a laptop to the room to run the meeting.

1. Plug MeetUp into power.



2. Connect the USB cable from MeetUp to the computer.



3. Connect the TV to the computer.

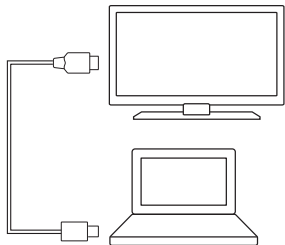
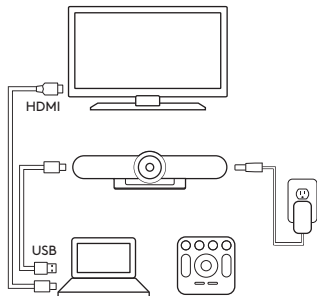


Diagram of all connections:



## MAKE MEETUP THE DEFAULT DEVICE

Ensure that MeetUp is chosen as the camera, speaker and microphone in your video conferencing applications. Please consult the application documentation for further instructions on how to do this.

## NOTE REGARDING 4K VIDEO

The USB 2.0 cable included with MeetUp supports FullHD video (up to 1080p). If you plan on using 4k video, please use a USB 3.0 cable (not included).

## STARTING A VIDEO CALL

After installing MeetUp and ensuring it is the default device in your video conferencing application, simply start the application in the normal manner and enjoy the benefits of improved audio and video.

## PAIRING MEETUP TO A *BLUETOOTH* DEVICE

You can use MeetUp for audio calls when paired to a *Bluetooth* device. To pair your *Bluetooth* device to MeetUp, follow these simple step:

1. Press and hold the *Bluetooth* button on the remote control until you see a flashing blue light near the camera lens.
2. Place your mobile device in *Bluetooth* pairing mode and select "Logitech MeetUp".

You are now ready to use MeetUp for audio calls.

Pressing the *Bluetooth* button on the remote after pairing will disconnect the *Bluetooth* device (it will still be "paired" but not "connected"). Pressing it again will reconnect the last paired device in range.

## PAIRING THE REMOTE CONTROL TO THE CAMERA

Your camera and remote control are paired at the factory. However, if you need to pair a remote to the camera (such as when replacing a lost remote) do the following:

1. Press and hold button on the back of the camera until LED flashes blue.
2. Press and hold the *Bluetooth* button on the remote for 10 seconds to place it in pairing mode.
3. Once the remote and camera are paired the LED will stop flashing.
4. If the pairing fails, the LEDs will keep flashing. Start from step 2 and repeat.

## FOR MORE INFORMATION

You can find additional information on MeetUp including:

- FAQs
- Software to enable functions in various applications
- How to order replacement parts
- And more at **[www.Logitech.com/MeetUp](http://www.Logitech.com/MeetUp)**