

# Vacuum cleaner

---

## User manual

VS20C85\*\*\*\* Series

---

- Before operating this unit, please read the instructions carefully.
- For indoor use only

**SAMSUNG**



# Contents

---

<b>Safety information</b>	<b>3</b>	<b>Operation</b>	<b>13</b>
Important safety symbols	3	Assembling the wall mount	13
General	4	Installing the wall mount	13
Vacuum cleaner	4	Using the wall mount	14
Maintenance	7	Charging the battery	16
Wall mount	8	Inserting the battery	16
Battery	9	Ejecting the battery	16
		Charging the additional battery	17
<b>Preparation</b>	<b>11</b>	Using the buttons and display	18
Accessories	11	Using the accessories	19
Parts overview	12		
		<b>Maintenance</b>	<b>21</b>
		Cleaning the vacuum cleaner	21
		<b>Appendix</b>	<b>27</b>
		Notes and cautions	27
		Troubleshooting	31
		Product specification	33



# Safety information

---

- Before operating the appliance, please read this manual thoroughly and retain it for your reference.
- Because the following operating instructions cover various models, the characteristics of your vacuum cleaner may differ slightly from those described in this manual.

## Important safety symbols

---

### **WARNING**

Indicates that a danger of death or serious injury exists.

### **CAUTION**

Indicates that a risk of personal injury or material damage exists.

### **NOTE**

Indicates that the following text contains additional important information.



# Safety information

---

## General

---

For information on Samsung's environmental commitments and product regulatory obligations, e.g. REACH, visit our sustainability page available via [www.samsung.com](http://www.samsung.com)

Failure to meet these requirements could cause damage to the internal parts of the vacuum and void your warranty.

- Read all instructions carefully. Before plug the station in, make sure that the voltage of your electricity supply is the same as that indicated on the rating plate at the bottom of the station.
- This appliance can be used by children aged from 8 years and above and persons with reduced physical, sensory or mental capabilities or lack of experience and knowledge if they have been given supervision or instruction concerning use of the appliance in a safe way and understand the hazards involved. Children should not play with the appliance. Children should not clean or perform maintenance on the vacuum without adult supervision.
- Do not allow the vacuum cleaner to run unattended at any time.
- This product is intended for household use only. (Do not use this product for other than its intended purposes.)
- Do not allow children to ride on or play with the product.
  - An injury or product damage may occur.

## Vacuum cleaner

---

- When assembling the vacuum, be careful not to catch your fingers or hands in the movement fold of the handle.
- Do not use the vacuum cleaner on a wet rug or floor.



- 
- Do not use the product at the following places;
    - In a place where a burning candle or a desk lamp is placed on the floor.
    - In a place where heaters are turned on or unextinguished embers exist in an unattended fireplace or an ashtray etc.
    - In a place where there are combustible materials such as oil paint, paint thinner, mothproofing substances, gasoline, alcohol, thinner, ashtrays with unextinguished cigarettes, etc.
    - In a closed place filled with explosive or toxic vapor.
  - Do not pick up the following things. Abnormal operation or product damage may occur.
    - A match or unextinguished ashes or cigarettes
    - Hard or sharp objects
    - Toxic materials (chlorine bleach, ammonia, drain cleaner etc.)
    - Liquid such as water or beverage or pet's waste
    - Chalk powder
  - If there is a gas leak or combustible spray such as a dust remover is used, do not touch the power outlet and open the window for ventilation.
    - An explosion or fire may occur.
  - If the product makes a strange sound or emits a smell or smoke, turn off the product immediately, and then contact a Samsung service center.
    - Electric shock or fire may occur.
  - When using the vacuum cleaner, be careful not to hurt yourself on the moving or spinning parts.
    - Keep your body parts (Hair, hands, etc.) from the spin brush or the spin disk.



## Safety information

---

- When cleaning the wall or ceiling, you should use both hands.
  - If you clean with one hand, you can damage your wrist or drop the vacuum and cause an injury or damage the vacuum.
- Do not use the vacuum cleaner on objects that can be easily scratched (monitors, stainless steel appliances, etc.).
- Sometimes the wheel of a brush can scratch the floor. Before using the vacuum cleaner, check the wheels of the brush.
  - If there is foreign matter on the wheel of the brush which cannot be removed easily, contact a Samsung service center.
- When the spin brush inside a brush is working, do not touch the brush.
  - Otherwise, your hand can be caught and it may cause an injury.
- Do not use the vacuum cleaner in direct sunlight or high heat.
- If excessive force is applied to an accessory with motor or foreign matter is caught in the spin brush (or spin disk), the accessory may stop working to protect the motor or the product. Turn the vacuum cleaner off, remove the foreign matter, and then turn it back on.
- Static electricity may occur depending on the humidity, temperature, or floor material, etc. in your home. If it happens repeatedly, contact a Samsung service center.
- Do not use Pet Tool+ in a small area for a long time and do not let Pet Tool+ keep spinning in one place.
  - Damage may occur if used on sensitive materials
- Do not use Combination Tool on hard materials such as leather or wood while bristles are not extended.



---

## Maintenance

---

- While using or after using the vacuum cleaner, you should lay the vacuum cleaner down or place it on the wall mount to store.
  - The product may fall and an injury and severe product damage occur. In addition, you may not be compensated for the damage.
- Do not store the vacuum cleaner inside a car.
- Before removing foreign matter inside the product, turn off the product first.
  - If the product is on while you are removing the foreign matter, you can hurt yourself or damage the product.
- When cleaning the exterior of the product, turn off the product first and then wipe it with a dry towel. Do not spray water directly onto the product or wipe it with volatile materials such as benzene, thinner, or alcohol.
  - If water gets into the product and an error occurs, turn off the product and contact a Samsung service center.
- When cleaning the washable parts, do not use alkaline detergent, acid, industrial detergent, air freshener, acetic acid, etc.
  - Product damage such as plastic breakage, deformation, discoloration, printing deterioration, etc. may occur.



# Safety information

---

Washable Parts		Dustbin, Washable Micro Filter, Fine Dust Filter, Metal Mesh Grille Filter, dry cloth
Acceptable detergent	Neutral	Dish washing detergent
Prohibited detergent	Alkaline	Lox, mold cleaner, etc.
	Acid	Paraffin oil, an emulsifier, etc.
	Industrial cleaners	NV-I, PB-I, Opti, alcohol, acetone, benzene, thinner, etc.
	Air freshener	Jet spray air fresheners (coffee flavor, herb, etc.)
	Oils	Animal oils, vegetable oils
	Etc.	Edible acetic acid, vinegar, glacial acetic acid, etc.

- Storing the product in sunlight for long hours may cause parts of the product to deform or discolor. Therefore, store the product in the shade.
- After cleaning the dustbin, Metal Mesh Grille Filter, or Washable Micro Filter with water, dry them in the shade.
  - When heat is applied, part deformation may occur.

## Wall mount

---

- Do not modify the polarized plug to fit a non-polarized outlet or extension cord.
- Do not use outdoors or on wet surfaces.
- Unplug the wall mount from the outlet when not in use and before servicing.
- Use only the wall mount supplied by the manufacturer to recharge.
- Do not use with a damaged cord or plug.
- Do not pull or carry by the cord, use the cord as a handle, close a door on the cord, or pull the cord around sharp edges or corners. Keep the cord away from heated surfaces.
- Do not use extension cords or outlets with inadequately rated current.



- 
- Do not charge a non-rechargeable battery.
  - Do not unplug by pulling on the cord. To unplug, grasp the plug, not the cord.
  - Do not mutilate or incinerate batteries as they will explode at high temperatures.
  - Do not attempt to open the wall mount. Repairs should be only carried out by a qualified Samsung service center.
  - Do not expose the wall mount to high temperatures or allow moisture or humidity of any kind to come into contact with the wall mount.

## Battery

---

- Do not mutilate or incinerate batteries as they will explode at high temperatures.
- Do not drop or strike the battery or subject it to a sudden shock.
- Do not disassemble the battery and make sure that you do not create a short circuit across the plus (+) and minus (-) terminals.
- As the battery is manufactured only for this product, do not use the battery for other electronic appliances or other purposes.
- When you purchase a new battery, make sure to check the model name (VCA-SBTA95) and the genuine **SAMSUNG** logo.
  - Contact your nearest Samsung Electronics retailer or Samsung service center to purchase any consumable accessories.
- Leaks from battery cells can occur under extreme usage or temperature conditions. If the liquid gets on your skin, wash the affected area quickly with water. If the liquid gets into your eyes, flush them immediately with clean water for a minimum of 10 minutes. Seek medical attention.



## Safety information

---

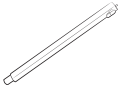
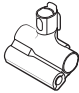




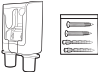

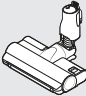
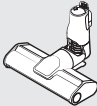

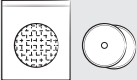



- When attaching the battery to the vacuum cleaner, insert it until you hear a click. This assures that the battery is firmly attached.
  - Otherwise, the battery may fall and could cause product damage or injury.
- If you are not going to use the vacuum cleaner for a long period of time or you are going to be away from home for a long period of time, unplug the wall mount, and then detach the battery from the vacuum cleaner. When the battery is not being charged and not being used, it will slowly discharge.
- To protect the motor and the battery, the product may not operate when the temperature is lower than 5 °C or higher than 45 °C.
- Dispose of the dead battery in compliance with the local regulations.



# Preparation

## Accessories

The accessories with the ' \* ' mark may differ depending on the models.

			
Pipe	Pet Tool+	Combination Tool	Extension Crevice Tool
			
Flexible Tool	User manual	Wall mount (2 screws / 2 screw anchors)	Battery charger
			
* Jet Dual Brush	* Slim LED Brush	* Spray Spinning Sweeper / Water tank / Reusable wet pads	* Disposable wet pads / Attachable pad
			
* Battery cradle	* Battery charger	* Battery	

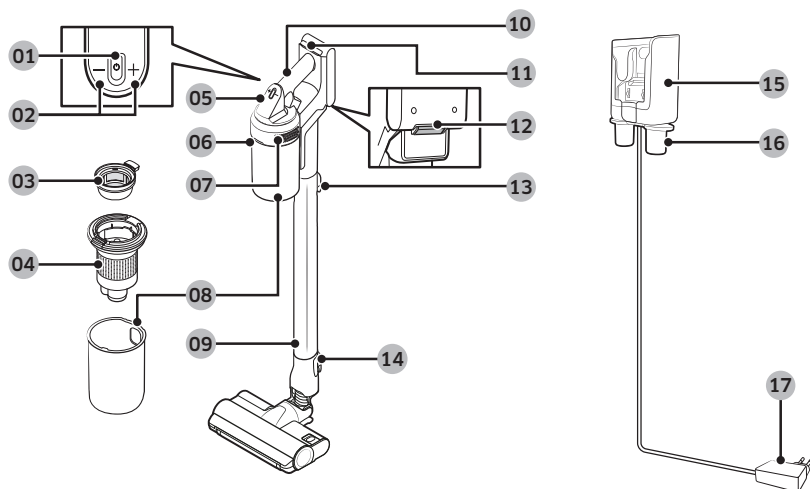
\* Optional

- VS20C85\*\*\*\* model: The additional battery and charger can be purchased separately.
- The Spray Spinning Sweeper includes reusable wet pads and disposable wet pads.



# Preparation

## Parts overview



01 Power (⏻) button

02 Suction power control buttons

03 Washable Micro Filter

04 Metal Mesh Grille Filter

05 Display

06 Dustbin release button

07 Fine Dust Filter

08 Dustbin

09 Pipe

10 Handle

11 Battery level indicator

12 Battery release button

13 Pipe release button

14 Brush release button

15 Vacuum charging port

16 Accessory holder

17 Battery charger

### NOTE

The wave pattern on the exterior of the product is a natural appearance due to the use of pearl plastic materials and its pearl distribution. In addition, the shining pearl used in the material gives an excellent gloss coating, no extra coating necessary.



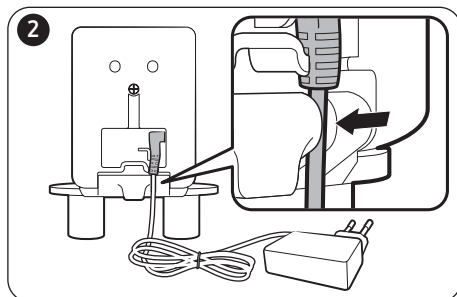
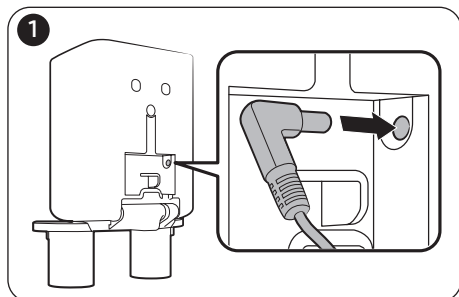
# Operation

## CAUTION

Install the wall mount on a hard concrete wall.

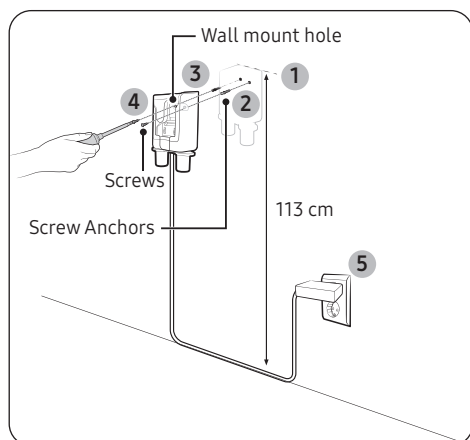
- If it is installed on a wood or plaster wall, the product may fall.

## Assembling the wall mount



To disassemble the wall mount, follow steps in reverse order.

## Installing the wall mount



1. The wall mount installation should be set so the top of the wall mount is 113 cm from the floor.
2. Using the wall mount as a template, mark where the screw holes will be placed.
3. Drill the holes to a depth of 50 mm using a 6 mm drill bit, and put the provided screw anchors into the hole.
4. Fix the wall mount to the wall with the provided screws.
5. Plug in the wall mount, place the vacuum cleaner into the wall mount, and then confirm that the battery level indicator turns on.

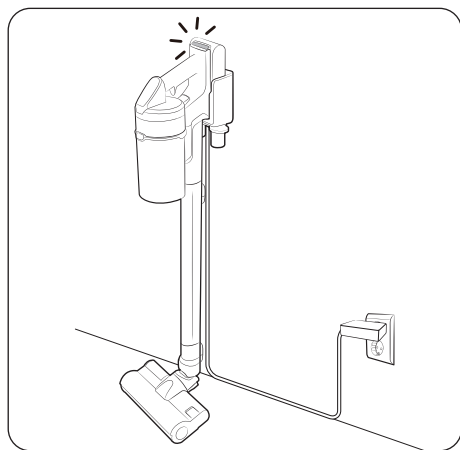


# Operation

---

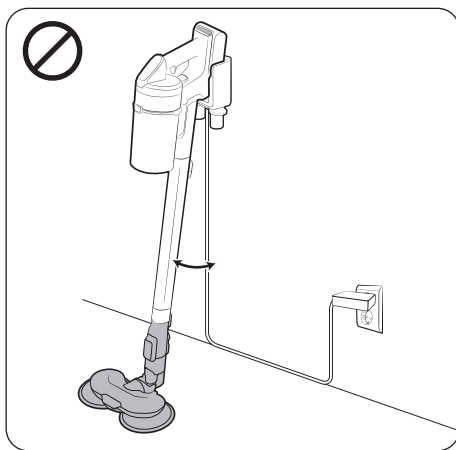
## Using the wall mount

---



### Charging

- Make sure the back of the battery is correctly placed onto the wall mount.
- Check if the battery level indicator turns on while charging.
- The battery level indicator blinks while charging. When charging is complete, the blinking stops and the light level dims.

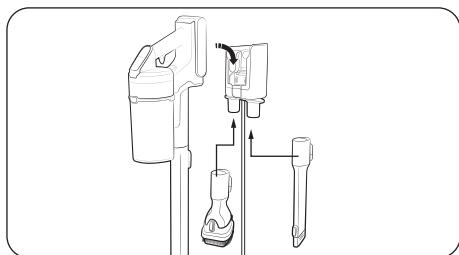


### NOTE

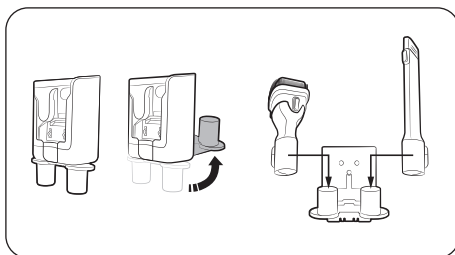
You cannot properly mount or charge the vacuum cleaner on the wall mount if the Spray Spinning Sweeper is attached to the vacuum cleaner.



## Storing the accessories



[When the wall mount is installed to a wall]



[When the wall mount is not installed to a wall]

- If the wall mount is not installed to a wall, fold the accessory holder as shown in the figure, and then place the wall mount on a flat and even surface (such as desk).
  - To fold the accessory holder easily, insert the Extension Crevice Tool first and then try to fold the accessory holder.
- Dust that remains in the accessory may fall when you detach it from the vacuum cleaner.
  - When you finish using the vacuum cleaner, operate the vacuum cleaner in the '**MAX**' mode for more than 10 seconds.



# Operation

---

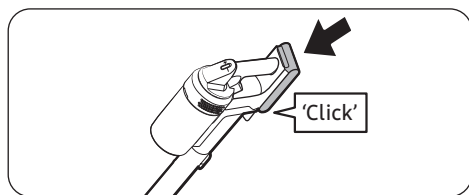
## Charging the battery

---

- When the battery level indicator turns red or the '**Low battery**' message appears on the display, charge the battery.
- You cannot use the vacuum cleaner while charging.
- Make sure the back of the battery is correctly placed onto the vacuum charging part.
- Check that the battery level indicator is displayed while charging.
- When charging starts, the battery level indicator turns on (red, orange, or yellow depending on charging progress), it rises gradually, and changes to green when the charging is complete.

## Inserting the battery

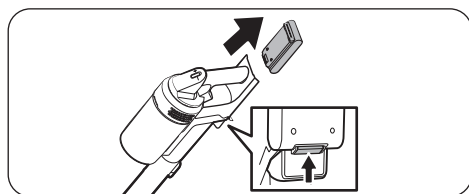
---



Push the battery to the end until you hear it click.

## Ejecting the battery

---



Press the battery release button at the rear of the handle to eject the battery.

### CAUTION

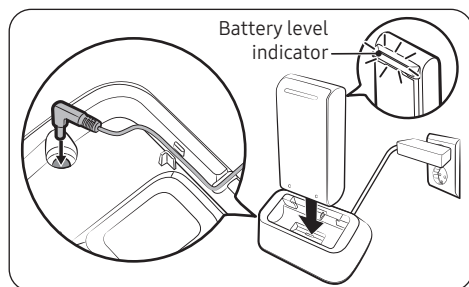
- Before ejecting the battery, the vacuum cleaner must be turned off.
  - The vacuum cleaner may malfunction if you eject the battery forcibly from the operating vacuum cleaner.
- Be careful not to drop the battery. If you do, you can injure yourself or damage the battery.



---

## Charging the additional battery

---



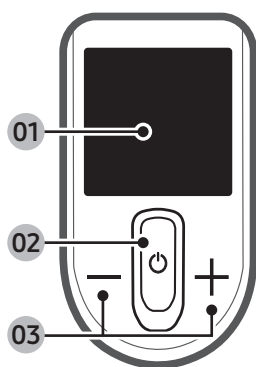
Charge the additional battery on the battery cradle.

- Firmly push the battery onto the battery cradle.
- Battery level indicator turns on and changes color to red, orange, and yellow as the battery charges. The battery level indicator will turn green when the battery is fully charged.



# Operation

## Using the buttons and display



### 01 Display

- Displays the current mode ('MIN', 'MID', 'MAX', 'JET', or 'WET') or the alert message.

### 02 Power (⏻)

- Press this button to turn on or off the vacuum cleaner.
- When you turn on the power, the vacuum cleaner starts in the 'MID' mode.
- If you assemble the Spray Spinning Sweeper, the vacuum cleaner starts in the 'WET' mode.

### 03 Suction power control (+ / -)

- You can change the suction power mode ('MIN', 'MID', 'MAX', or 'JET').
- In the 'WET' mode, press the + button to spray water once or press and hold the + button to spray water for up to 2 seconds.
- Press and hold the + button for 3 seconds to enter or exit the language setting. Press the + or - button to select a language.
- While the vacuum cleaner is on the wall mount, press and hold the + button for 5 seconds to enable or disable the Energy Saving mode.

### NOTE

- Only the + button works when the vacuum cleaner is in the 'WET' mode.
- You cannot enter the language settings when the vacuum cleaner is in the 'WET' mode.
- The Energy Saving mode is automatically disabled if you use the vacuum cleaner.
- The brush may cling to the floor or does not turn properly depending on the floor material (a carpet, a mat, bedding, etc.). If such a problem occurs, change the suction power mode to 'MIN' or 'MID'.

## Alert messages

Message	Explanation
Low battery	Displays when battery is low.
Object stuck in brush/tool	Error displays when something is caught in the brush or tool.
Filter not inserted	Error displays when Micro Filter is missing.
Clogged	Error displays when the vacuum cleaner is clogged.
Check brush, tool, or filter	Alerts the user to check the brush, tool, or filter in order to solve the clogging error.
Clean Micro filter	Alerts and recommends the user to regularly check and wash the Micro Filter. (Refer to the 'Cleaning the vacuum cleaner' section.)
Energy Saving on	Displays when the Energy Saving mode is on.
Energy Saving off	Displays when the Energy Saving mode is off.

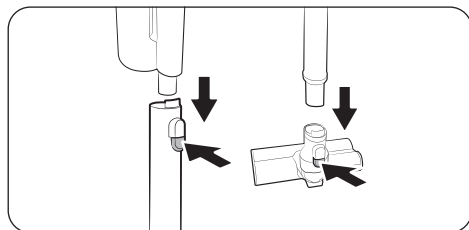


---

## Using the accessories

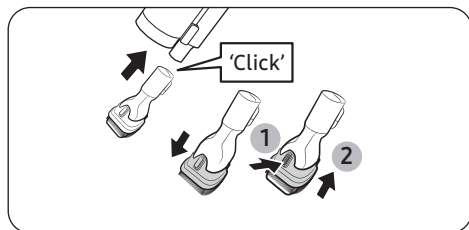
---

### Detaching the accessories



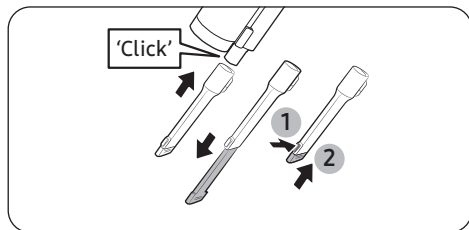
- To detach the accessories, press the release button on the back of each accessory.
- Before detaching the accessories, operate the vacuum cleaner in the '**MAX**' mode for 10 seconds to prevent any foreign matter remains inside the accessory.

### Combination Tool



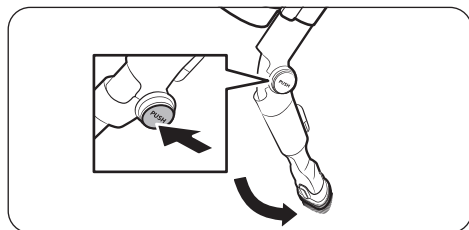
Use to remove dust from curtains, furniture, sofas, etc.

### Extension Crevice Tool



Use to remove dust in grooves of window frames, narrow gaps, corners, etc.

### Flexible Tool



Use to clean hard to reach places such as upper or rear parts of furniture or ceilings.

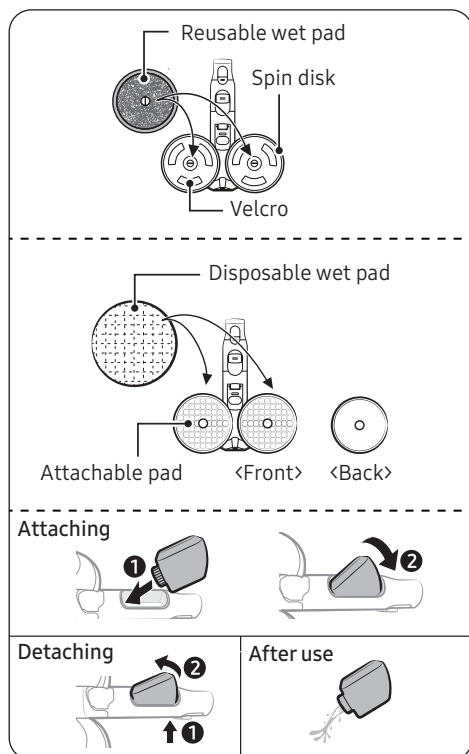
#### NOTE

You can connect the Combination Tool or the Extension Crevice Tool to use with the Flexible Tool.



# Operation

## Spray Spinning Sweeper



Use to clean a wood and linoleum floor with a wet pad.

- The Spray Spinning Sweeper does not have a dust suction function.

### Using the reusable wet pad

- When attaching the wet pad, make sure the pad is in the center of the spin disk.

### Using the disposable wet pad

- Attach the disposable wet pad to the front side (Velcro side) of the attachable pad on the spin disk.
  - If you use the disposable wet pad without the attachable pad, cleaning performance can be degraded.
- After using the disposable wet pad, discard the pad.

### Detaching or attaching the water tank

- Press the lower part of the water tank to detach.
- When attaching the water tank, insert the front end first.

### NOTE

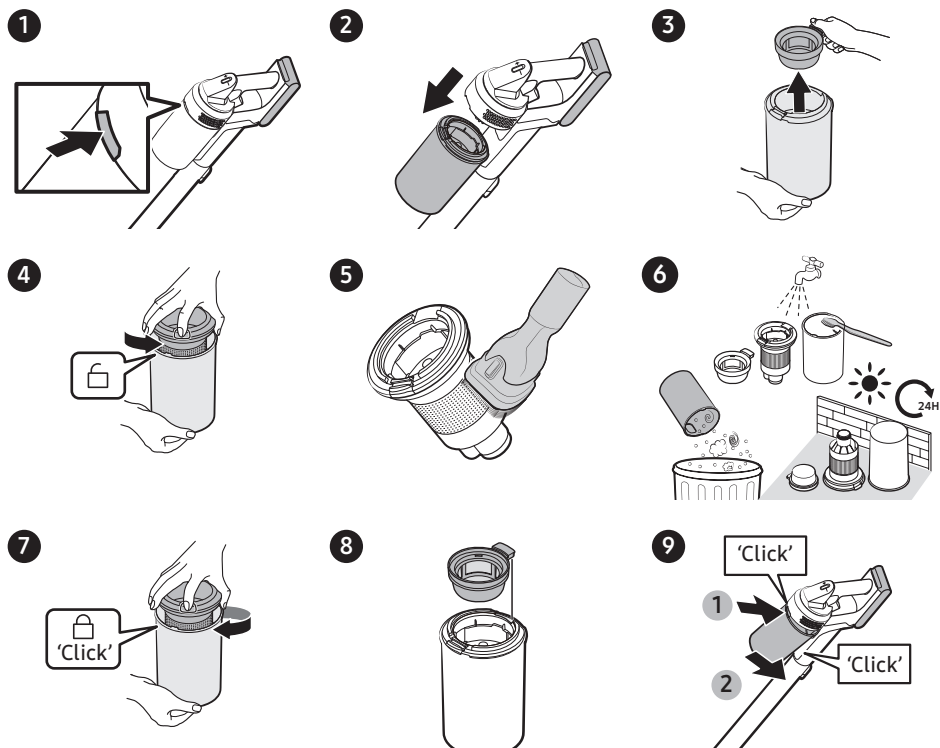
- Do not use groundwater or polluted water.
- When using the Spray Spinning Sweeper for the first time, the air in the internal pump and the tube may cause to delay in spraying water. Press the + button repeatedly.



# Maintenance

## Cleaning the vacuum cleaner

### Dustbin/Washable Micro Filter



#### CAUTION

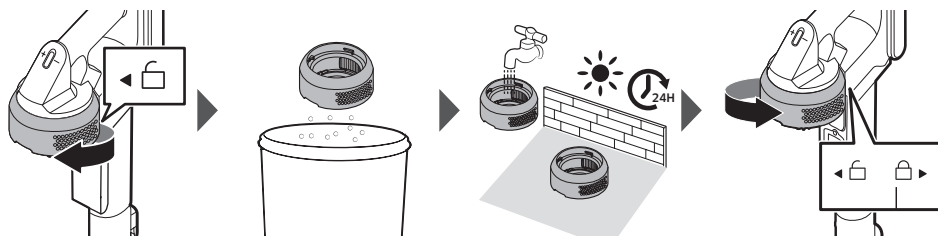
- After cleaning the dustbin and Washable Micro Filter with water, you should dry them completely in the shade for more than 24 hours before use.
  - When heat is applied, part deformation may occur.
  - If the filter is not dried completely before being used, it can cause an odor.
- If the dustbin or the filter is clogged, the vacuum cleaner may stop its operation due to the overheating prevention device of the motor.
  - Clean the dustbin or the filters and then operate the vacuum cleaner again.



# Maintenance

## Fine Dust Filter

Make sure to turn off the product before cleaning the filter.

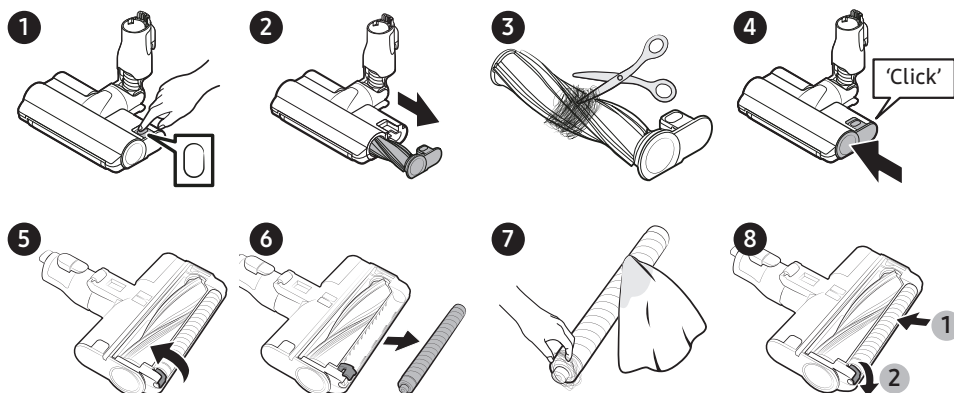


- Twist and pull off the Fine Dust Filter, and tap it gently to remove the dust.
- Wash the filter with running water once a month to maintain the best performance of the filter.
- After cleaning, dry it completely for more than 24 hours in the shade before use.
- For assembly, turn it counterclockwise until the line under the lock image is not visible.

### NOTE

- Do not use detergent or tool when washing the filter.
- Do not dry with heat.

## Jet Dual Brush



If the foreign matter is not removed, use scissors to remove it.

### CAUTION

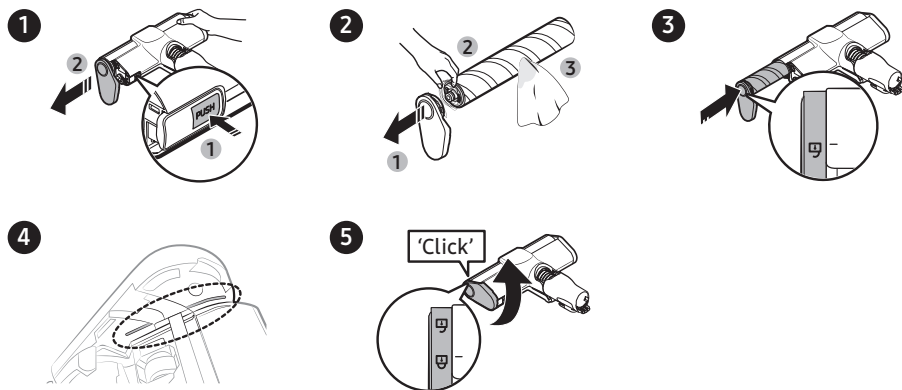
- If a cloth or other foreign matter is vacuumed up and tangled with the spin brush, the spin brush will stop working to protect the brush motor. After cleaning the brush, turn the power off and then on again.
- If the brush does not work after cleaning, turn the power off and then on again.
- When cleaning the brush, be careful not to catch your fingers in the folding parts of the brush.



---

## Slim LED Brush

---



---

### CAUTION

- Do not clean the brush with water.
- When foreign matter remains on the brush, remove it with a wet tissue or a dry cloth.

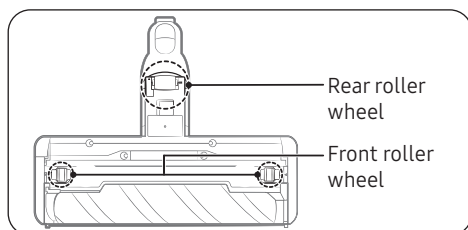
### NOTE

- If the spin brush does not work after cleaning the Slim LED Brush, the overheating prevention device of the motor may have been enabled. Wait 30 minutes or more to cool the motor before operating it again.
- When removing residual debris with a wet tissue, rub the spin brush gently to avoid compressing it.
  - To prevent the bristles on the spin brush from being compressed and causing unwanted vibration, dry the spin brush vertically on the floor.
- Properly insert the spin brush to its slot.



# Maintenance

## Slim LED Brush roller wheels



Use a small screwdriver to disassemble the front and rear roller wheels.

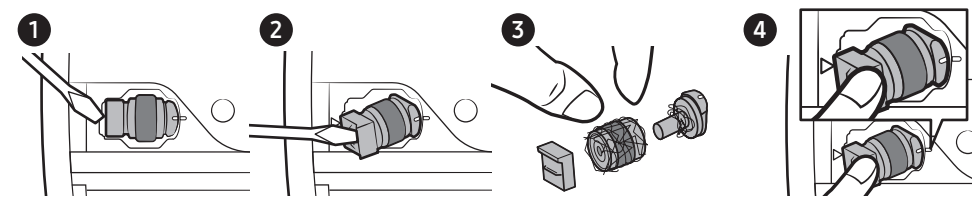
### NOTE

Tools required for disassembly. Flat head screwdriver (3 mm or less in width), Phillips screwdriver, prying tool.

### CAUTION

- For your safety, wear gloves before disassembling.
- You may damage the product if you use tools that are wider or thicker than the gaps allowed for disassembly.
- Keep the detached front and rear roller wheels out of children's reach. Beware of detached front and rear roller wheels as they can be a choking hazard.
- Be careful not to injure your hands or other body parts when using the tool.

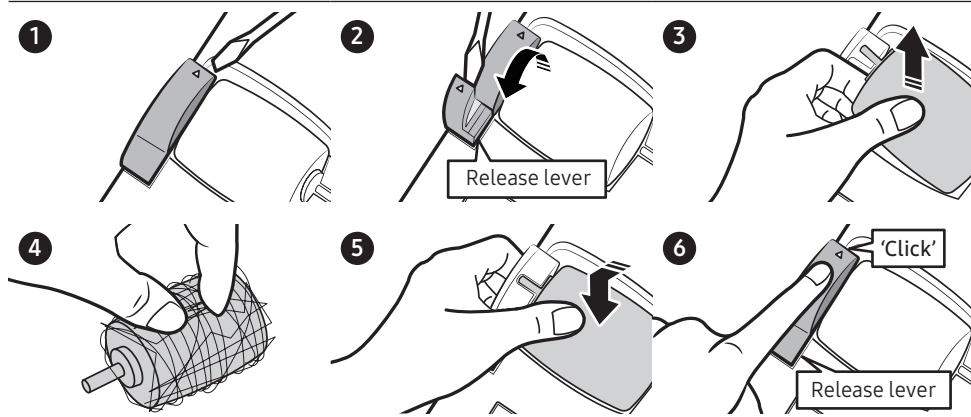
## Front roller wheel



- Disassemble the front roller wheels and remove the tangled foreign matter. Then, reassemble the wheels.
- Align the line marked on the wheel to the line on the body of the brush, and then insert it back into its place.



## Rear roller wheel



- Lift the release lever to detach the rear roller wheel.
- Detach the rear roller wheel and remove the tangled foreign matter. Then, reassemble the wheel.
- Insert the rear roller wheel into its place, and then press the release lever until you hear a click.

### CAUTION

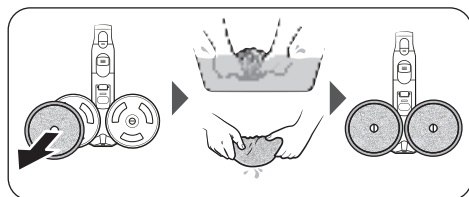
Be careful not to damage the release lever with a screwdriver. There is a chance of damaging the release lever if you apply excessive force to lift the release lever or twist the screwdriver while it is inserted into the gap.



# Maintenance

---

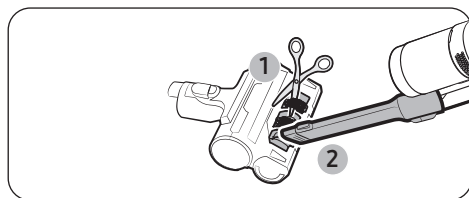
## Spray Spinning Sweeper



### NOTE

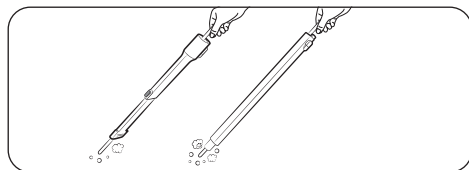
If the spin disk does not work after cleaning the Spray Spinning Sweeper, the overheating prevention device of the motor may have been enabled. Wait 30 minutes or more to cool the motor and operate again.

## Pet Tool+



Cut the tangled hair or fur with scissors, and then use a vacuum cleaner to suck up the pieces.

## Extension Crevice Tool / Pipe



Insert a long thin stick and rotate several times to clean the Extension Crevice Tool or the Pipe.



# Appendix

---

## Notes and cautions

---

### Installation

---

#### **CAUTION**

- Do not install the product near water, in an area with excessive moisture, or near window, etc.
- Install the wall mount in a place where there are no objects that could break and cause damage.
- If you have a problem with installing the wall mount, contact a Samsung service center.

### Battery usage

---

#### **NOTE**

- If the product does not work after you charge the battery, replace the battery. If it still does not work with the new battery, contact a Samsung service center.
- Spare batteries and the Accessory Cradle chargers need to be purchased separately.

#### **CAUTION**

- Do not apply heat to the battery and do not put the battery in a fire.
- Removing the battery during operation may cause product malfunction.
- If you have removed the battery while the vacuum cleaner motor is operating, the vacuum cleaner may not work for 30 seconds even after you re-attach the battery for safety reasons.



# Appendix

---

- Battery usage time may shorten with increased battery use. When the battery no longer charges or runs down quickly, replace the exhausted battery with a new one.
- Use only batteries provided by the manufacturer.
- Before inserting the battery, confirm that the battery is being inserted in the correct direction.

## Operation

---

### NOTE

- Please charge the battery before using a newly purchased battery for the first time or if you have not used the battery for a long time.
- When the battery level is low, recharge it. If the level of the battery remains low for a long period of time, it can cause the performance of the battery to degrade.
- Before using the Spray Spinning Sweeper, detach the wet pad and put some water on it, then reattach it to the spin disk.
- Clean the reusable wet pad of the Spray Spinning Sweeper in a normal washing machine by using a neutral detergent.
  - However, If the wet pad is exposed to heat, softener, etc, it may be modified or discolored and product performance can be degraded. Do not boil the wet pad.
- Use a genuine wet pad of Samsung Electronics for the Spray Spinning Sweeper.
- If the Spray Spinning Sweeper is used without a wet pad, any product malfunction will not be covered by warranty and a service fee will be charged.
- When you purchase an additional reusable wet pad for the Spray Spinning Sweeper, contact a Samsung service center.



- 
- When you purchase an additional disposable wet pad, check the model name (VCA-SPA95).

## **CAUTION**

- Do not leave the product leaning against a wall or a table.
  - The product may fall and an injury and severe product damage may occur.
- Do not allow children to touch the product while cleaning.
  - When the vacuum cleaner overheats, children may get burnt.
- Before unplugging or plugging in the wall mount, turn off the vacuum cleaner and make sure that the pins of the power plug do not come into contact with your hands.
  - Fire or electric shock may occur.
- Do not step heavily on the upper part of the Spray Spinning Sweeper while using it.
  - Product damage or floor damage may occur.
- When cleaning, be careful that the side of the brush does not bump into a molding part, a wall, furniture, etc. and cause staining.
  - For a slight stain, remove it with a wet tissue or a cleaner.
- Do not use water to clean the product when in use.
- You should use the product in dry places and do not use the product in wet places or on water.
- Do not put hot water, detergent, etc. into the water tank of the Spray Spinning Sweeper.
  - Product malfunction or performance degradation may occur.
- When not using the Spray Spinning Sweeper, empty all the water in the water tank.
- Do not use without a filter in place.



# Appendix

---

## Maintenance

---

### **NOTE**

- If the inner part of the Spray Spinning Sweeper is clogged with large foreign matter, spinning speed decreases or the spin disk stops.

### **CAUTION**

- Do not clean the brush of the vacuum cleaner with water. Cleaning it with water can cause deformation of parts or malfunction.
- If you notice a continuous reduction in suction or the vacuum cleaner overheats abnormally, clean the products and replace filters.



---

## Troubleshooting

---

Before calling for service, review the problems and solutions below. Note that you will be charged for any service calls in which no defects were found.

Problem	Solutions
The vacuum cleaner does not work.	<ul style="list-style-type: none"><li>• Check the battery level and charge the battery.</li><li>• Check whether the product is turned off, and then press the <b>Power</b> button to turn it on.</li><li>• Check whether the Telescopic Pipe, the dustbin or the brush is blocked.</li><li>• Check that the Washable Micro Filter is inserted correctly.</li><li>• If the vacuum cleaner has not been used for a long time, charge the battery.</li><li>• If the battery dies, replace the battery.</li></ul>
The spin brush (or spin disk) of an accessory is not moving.	<ul style="list-style-type: none"><li>• When the '<b>Check Brush</b>' message appears on the display, turn off the vacuum cleaner and check whether the brush is clogged with foreign matter. If so, remove the foreign matter and restart the vacuum cleaner.</li><li>• When the vacuum cleaner is turned on, turn it off and on again.<ul style="list-style-type: none"><li>- For the Slim LED Brush and Spray Spinning Sweeper, if the overheating prevention device of the accessory's motor enables, it may take about 30 minutes to cool the motor.</li></ul></li></ul>
An odor emits from the air outlet or the filter of the product.	<ul style="list-style-type: none"><li>• Empty the dustbin and clean the filters frequently.<ul style="list-style-type: none"><li>- As your vacuum cleaner is a new product, it may have a slight odor for the first 3 months after purchase.</li><li>- If you use the vacuum cleaner for a long period of time, accumulated dirt in the dustbin or dust on the filter may generate an odor.</li></ul></li><li>• Replacement filters are available at your local Samsung service agent.</li></ul>
Static electricity occurs when cleaning a thick and soft mat.	<ul style="list-style-type: none"><li>• Materials of a mat (childcare center mat, noise prevention mat for between floors, etc.) may cause the static electricity.<ul style="list-style-type: none"><li>- Move the brush on a normal floor for a while and clean again, then the static electricity should disappear.</li></ul></li></ul>
The Spray Spinning Sweeper does not spray water.	<ul style="list-style-type: none"><li>• When using the Spray Spinning Sweeper for the first time, the air in the internal pump and the tube may cause to delay in spraying water.<ul style="list-style-type: none"><li>- Detach the water tank, press the <b>+</b> button, and check that the pump operates with a sound.</li><li>- Fill the water tank, attach it to the Spray Spinning Sweeper, and then press the <b>+</b> button repeatedly.</li></ul></li></ul>
The vacuum cleaner cannot be charged.	<ul style="list-style-type: none"><li>• Confirm that the voltage provided to the wall mount matches the requirements of the wall mount.</li><li>• Check that the vacuum cleaner is turned on, and then check that the LED of the battery level indicator is turned on.</li><li>• Check if foreign matter (dust) is on the charging terminal. Remove any foreign matter with a cotton swab or soft cloth.</li></ul>



# Appendix

---

Problem	Solutions
Vacuum cleaner stops operation during cleaning.	<ul style="list-style-type: none"><li>• As this product has the overheating prevention device of the motor, product will stop operation temporarily for the following conditions. After correcting the cause of the problem, turn the product on again. (This case may differ depending on the ambient temperature.)<ul style="list-style-type: none"><li>- When the vacuum cleaner operates with a full dustbin.</li><li>- When the vacuum cleaner operates with a brush clogged.</li><li>- When the Extension Crevice Tool is used for long hours.</li></ul></li></ul>
Suction force decreases suddenly and the vacuum cleaner makes a vibrating sound.	<ul style="list-style-type: none"><li>• Check whether the brush, the dustbin or the Telescopic Pipe is clogged with foreign matter and remove it.</li><li>• Check whether the dustbin is fully filled with dust. If it is, empty the bin.</li><li>• Check whether the filter is dirty. If it is, clean the filter.</li></ul>
Cleaning is finished but small dust particles come out of the accessories.	<ul style="list-style-type: none"><li>• After cleaning, operate the vacuum cleaner for 10 seconds or more to suck the small dust particles.</li></ul>
Brush stops on deep pile carpet or floor mat.	<ul style="list-style-type: none"><li>• Protective mode may operate to prevent motor damage caused by overload adjust suction power according to pile length and resistance of carpet.</li></ul>

- This Vacuum cleaner is approved the following.
  - The Low Voltage Directive 2014/35/EU
  - The EMC Directive 2014/30/EU



# Product specification

Charging and cleaning time may differ depending on the brushes and the conditions of use.

Model		VS20C85**** Series	
Power consumption (Vacuum cleaner)		Based on a handy vacuum cleaner: 580 W	
Battery specification		Li-ion 25.2 V, 2200 mAh, 7 cell	
Weight (Vacuum cleaner)		2.63 kg (Jet Dual Brush) 2.43 kg (Slim LED Brush)	
Size	Vacuum cleaner	Width 250 mm x Depth 202 mm x Height 930 mm	
Charging time		3.5 hours	
Cleaning time (Default mode: MID)	Combination Tool / Extension Crevice Tool	MIN: Approx. 60 min.	MID: Approx. 30 min.
		MAX: Approx. 10 min.	JET: Approx. 3 min.
	Jet Dual Brush	MIN: Approx. 42 min.	MID: Approx. 24 min.
		MAX: Approx. 14 min.	JET: Approx. 8 min.
	Slim LED Brush	MIN: Approx. 48 min.	MID: Approx. 25 min.
		MAX: Approx. 14 min.	JET: Approx. 9 min.
Spray Spinning Sweeper		Approx. 100 min.	

## NOTE

Cleaning time stated in the above table is based on a test after using one battery. Cleaning time doubles when you use two batteries consecutively.

# Standby Power Consumption

Off mode	Power Consumption (W)	0.50
----------	-----------------------	------



# Memo

---



# Memo

---



ITALIA	800-SAMSUNG (800.7267864)	<a href="http://www.samsung.com/it/support">www.samsung.com/it/support</a>
NETHERLANDS	088 90 90 100	<a href="http://www.samsung.com/nl/support">www.samsung.com/nl/support</a>
SWEDEN	0771-400 300	<a href="http://www.samsung.com/se/support">www.samsung.com/se/support</a>
FINLAND	030-622 75 15	<a href="http://www.samsung.com/fi/support">www.samsung.com/fi/support</a>
NORWAY	21 62 90 99	<a href="http://www.samsung.com/no/support">www.samsung.com/no/support</a>
DENMARK	70 70 19 70	<a href="http://www.samsung.com/dk/support">www.samsung.com/dk/support</a>
SPAIN	91175 00 15	<a href="http://www.samsung.com/es/support">www.samsung.com/es/support</a>
SWITZERLAND	0800 726 786	<a href="http://www.samsung.com/ch/support">www.samsung.com/ch/support</a> (German) <a href="http://www.samsung.com/ch_fr/support">www.samsung.com/ch_fr/support</a> (French)
PORTUGAL	210 608 098 Chamada para a rede fixa nacional Dias úteis das 9h às 20h	<a href="http://www.samsung.com/pt/support">www.samsung.com/pt/support</a>
GERMANY	06196 77 555 77	<a href="http://www.samsung.com/de/support">www.samsung.com/de/support</a>
LITHUANIA	8-800-77777	<a href="http://www.samsung.com/lt/support">www.samsung.com/lt/support</a>
LATVIA	8000-7267	<a href="http://www.samsung.com/lv/support">www.samsung.com/lv/support</a>
ESTONIA	800-7267	<a href="http://www.samsung.com/ee/support">www.samsung.com/ee/support</a>
AUSTRIA	0800 72 67 864 (0800-SAMSUNG)	<a href="http://www.samsung.com/at/support">www.samsung.com/at/support</a>

