



SIZZAPP APP Manual

SIZZAPP is Smart security system and reliable trip mate for your vehicle.

It is a compact, easy to install monitoring device without contract and monthly fees.

Track your vehicle location, protect it from thefts and receive notifications even if you are not around.

With the help of this document, you will learn everything about working with the SIZZAPP application, from how to register an account to all the features available in the application.

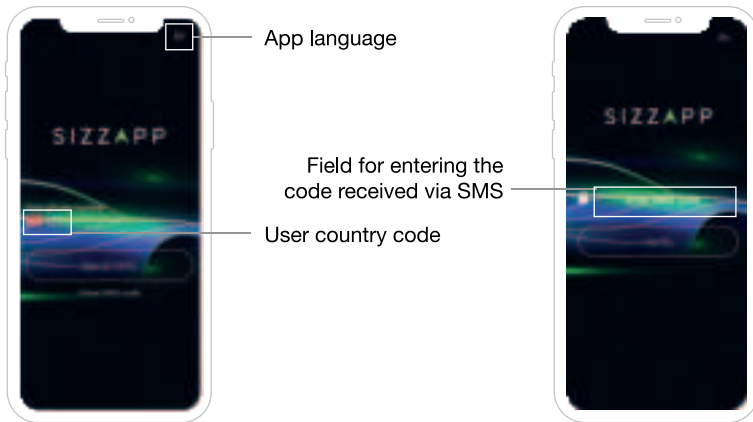
SIZZAPP App Tutorial can be also found in video format:



Table of content:

Registration	3	Share the trip	11
Main menu	4	Speed	12
Profile	5	Settings	13-16
Device settings	6	Settings menu	13
Map	7-10	Notifications and geofences settings	14
Routes	7	Organizer	15
Eco-drives	8	FAQ, terms and conditions, contact us	16
Geofences	9		
Notifications	10		

Registration



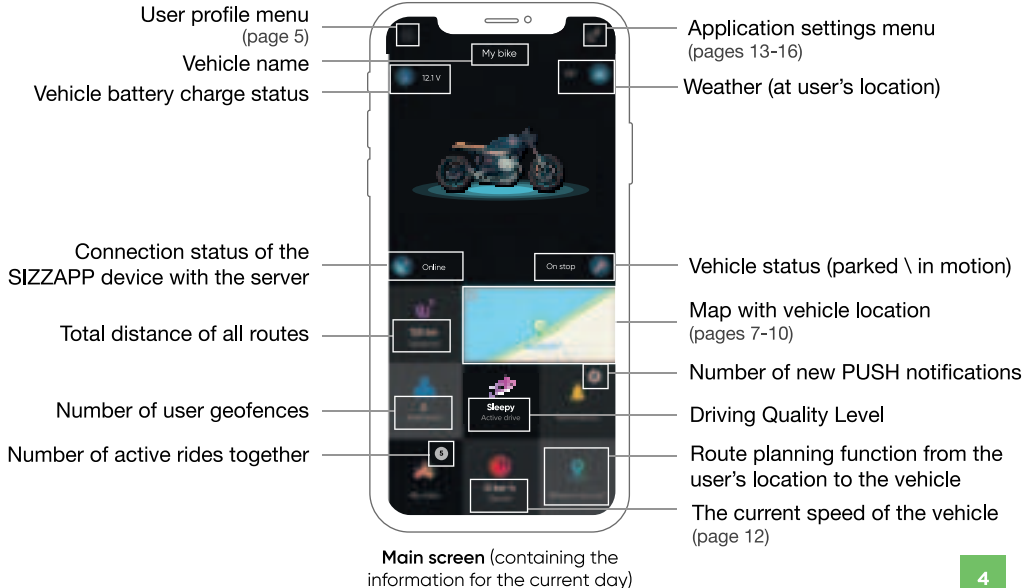
Registration / Authorization Screen

Code Confirmation Screen

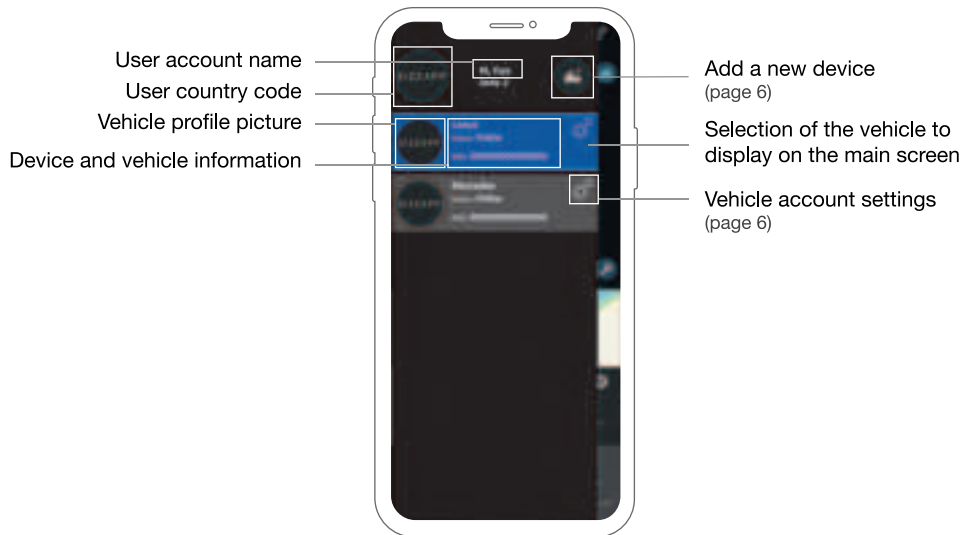
- 1 Sending a request to receive SMS with a 4-digit authorization code
- 2 Go to code entry screen (code valid for 10 minutes)

- 1 Enter the code received via SMS
- 2 Authorization and login to the application

Main menu



Profile

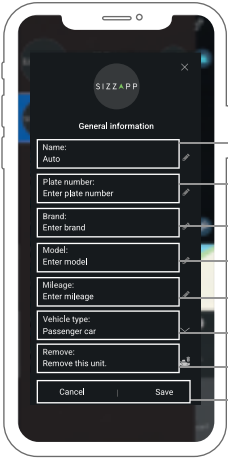


Profile and vehicle management screen

Device settings

Field for entering
the unique 15-digit
device IMEI number

Cancellation/
Confirmation



Device name to display
in the application

Vehicle registration
number

Manufacturer

Model

Mileage

Vehicle type selection

Deleting an object

Cancellation/Confirmation

New device account adding screen Device account settings screen

Map

Routes

Displaying the current location of the vehicle

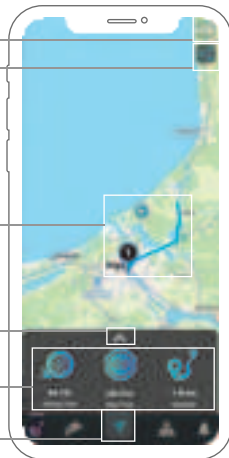
Share trips
(page 11)

Visual display of routes and stops

Open list of routes and stops

Summary statistics for the selected period

Go to home screen



Route history screen



List of routes and stops screen

Selecting a period

List of routes and stops

Map

Sleepy



Driving style screen
(depending on the type of transport selected)

Map

Geofences

- Opening / closing the list and calendar
- List of active geofences
- To delete a geofence, drag to the left
- Creating a new geofence
- Geofence notifications settings



Geofence screens

Map

Notifications

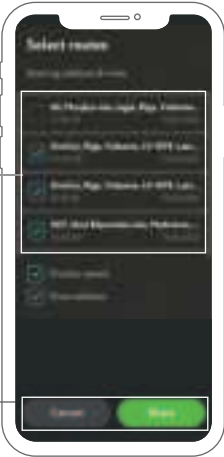


Notifications screens

Share the trip

Selection of
desired trips

Cancellation/
Confirmation



Route Selection screen
step 1

Speed and
address displays

Cancellation/Sharing



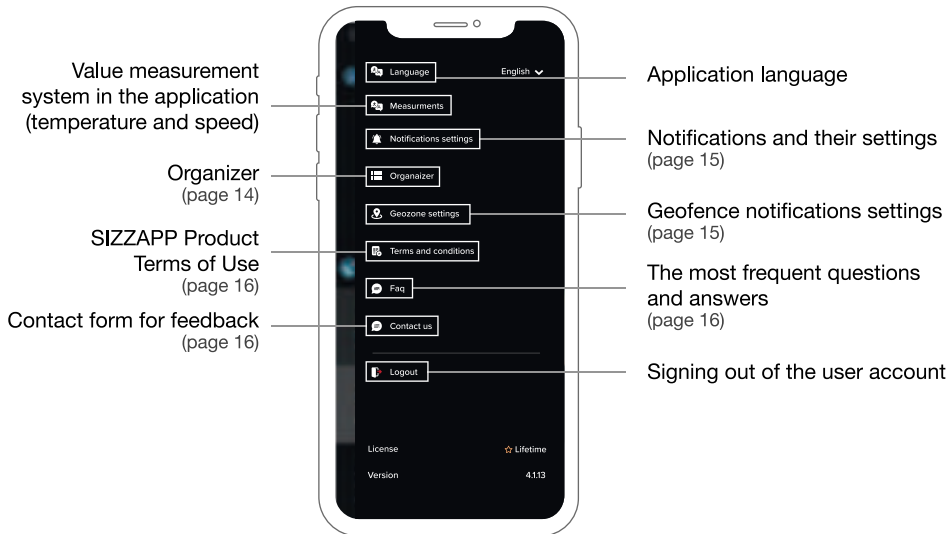
Sharing Trips screen
step 2

Speed



Detailed speed screen

Settings



Application main settings screen

Organizer



Organizer settings screen

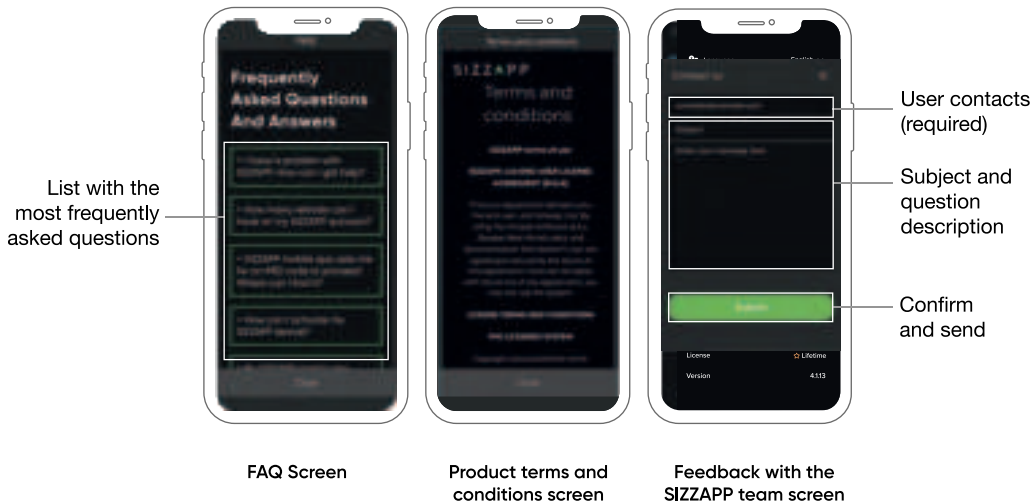
Technical inspection event screen

Settings



Notification settings screen Geofence notifications settings screen

Settings



S I Z Z ▲ P P

The future of vehicle security