

ENGINEERING  
TOMORROW

*Danfoss*

User Guide

# KoolProg®

<http://koolprog.danfoss.com>



## Table of contents

1. Introduction.....	2
2. Downloading .exe file .....	2
3. System requirements .....	2
4. Installing software.....	3
5. Connection with controllers.....	3
6. Starting the program.....	6
7. Set parameters.....	7
8. Copy to device .....	12
9. On-line service.....	14
10. Unknown controller support.....	17

## 1. Introduction

Configuring and testing the Danfoss electronic controllers has never been as easy as with the new KoolProg PC software.

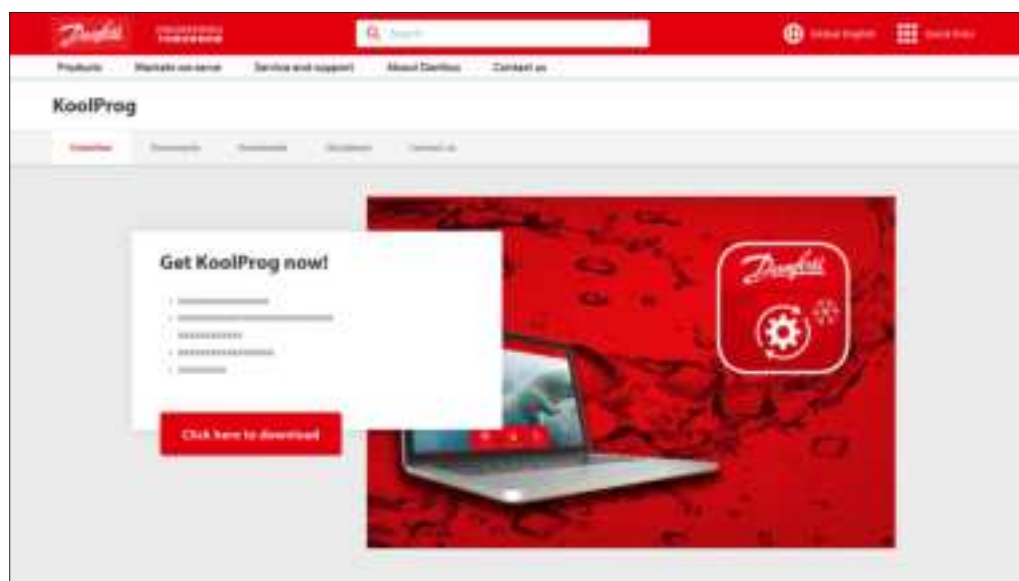
With one KoolProg software, you can now take advantage of new intuitive features such as the selection of favorite parameter lists, writing on-line as well as off-line program files, and monitoring or simulating alarm status activities. These are only some of the new features that will minimize the time R&D and production will spend on development, programming, and testing the Danfoss range of commercial refrigeration controllers.

Supported Danfoss products: ETC 1H, EETc/EETa, ERC 111/112/113, ERC 211/213/214, EKE 1A/B/C, AK-CC55, EKF 1A/2A, EIM 365, EKE 100, EKC 22x.

The following instructions will guide you through the installation and first time usage of KoolProg®.

## 2. Downloading .exe file

Download KoolProgSetup.exe file from the location: <http://koolprog.danfoss.com>



## 3. System requirements

This software is intended for a single user and recommended system requirements as below.

OS	Windows 10 or Windows 11, 64 bit
RAM	8 GB RAM
HD Space	200 GB and 250 GB
Required software	MS Office 2010 and above
Interface	USB 3.0

**Macintosh operating system is not supported.**

**Running the set-up directly from a Windows server or network file server is not recommended.**

#### 4. Installing software

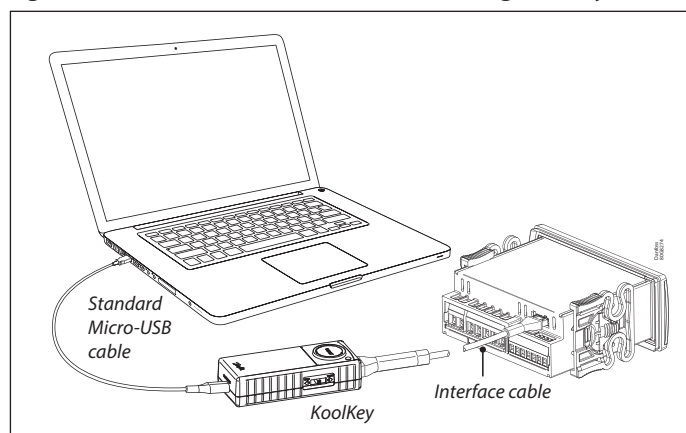
- Double click on the KoolProg® set-up icon.  
Run the installation wizard and follow the on-screen instructions to complete the KoolProg® installation.



**Note:** If you encounter a "Security warning" during installation, please click on "Install this driver software anyway".

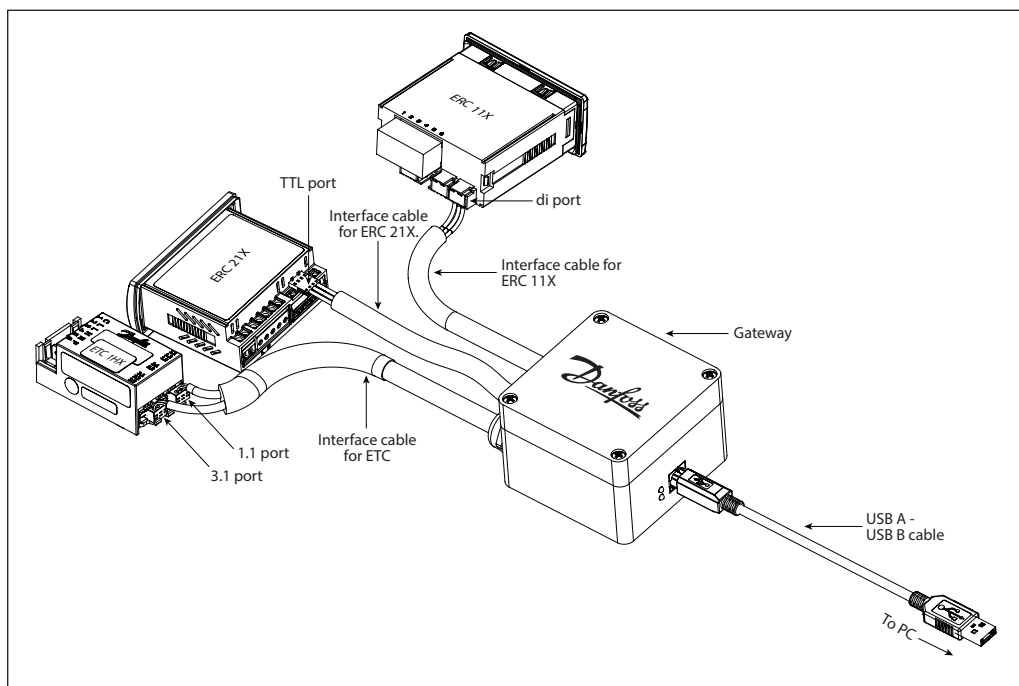
#### 5. Connection with controllers

**Fig 1: EET, ERC21x and ERC11x controllers using KoolKey (code no. 080N0020) as a Gateway**



1. Connect the KoolKey to the PC's USB port using standard micro USB cable.
2. Connect the controller to KoolKey using an interface cable of respective controller.

**Fig 2: ERC11x, ERC21x and ETC1Hx using Danfoss Gateway (code no. 080G9711)**

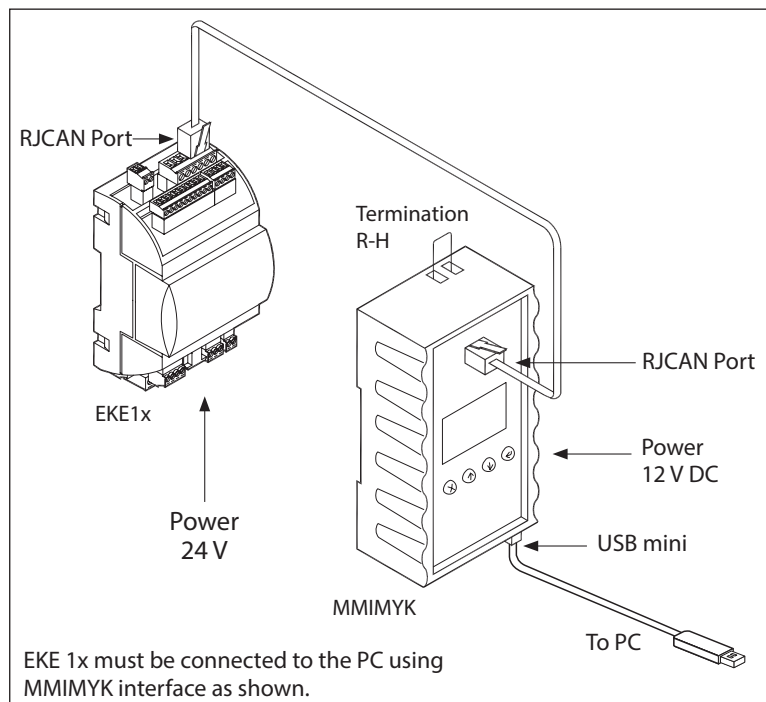


1. Connect the USB cable to the PC's USB port.
2. Connect the controller using respective cable.

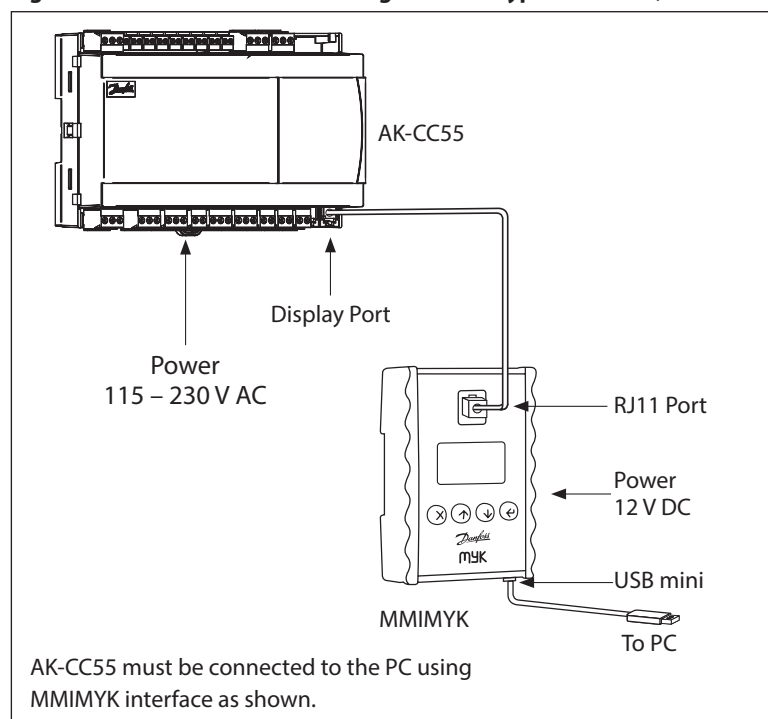
**CAUTION:** Please ensure that only one controller is connected at any time.

For more details on programming setting file to controller using KoolKey and Mass Programming Key please refer following links: [KoolKey \(EKA200\)](#) and [Mass Programming Key \(EKA201\)](#).

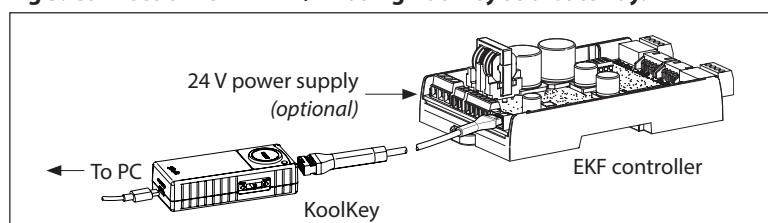
**Fig 3: Connection for EKE using interface type MMIMYK (code no. 080G0073)**



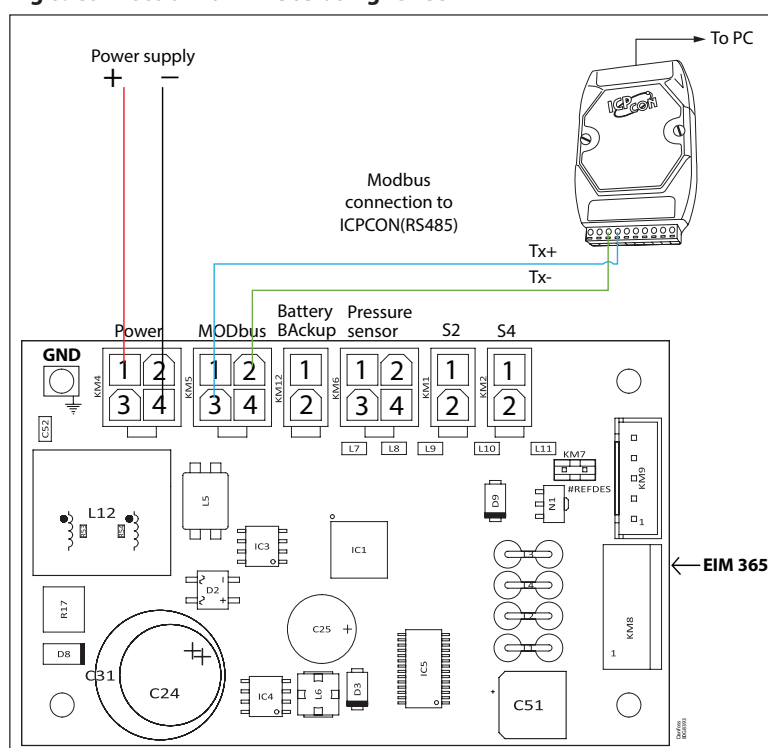
**Fig 4: Connection for AK-CC55 using interface type MMIMYK (Code No. 080G0073)**



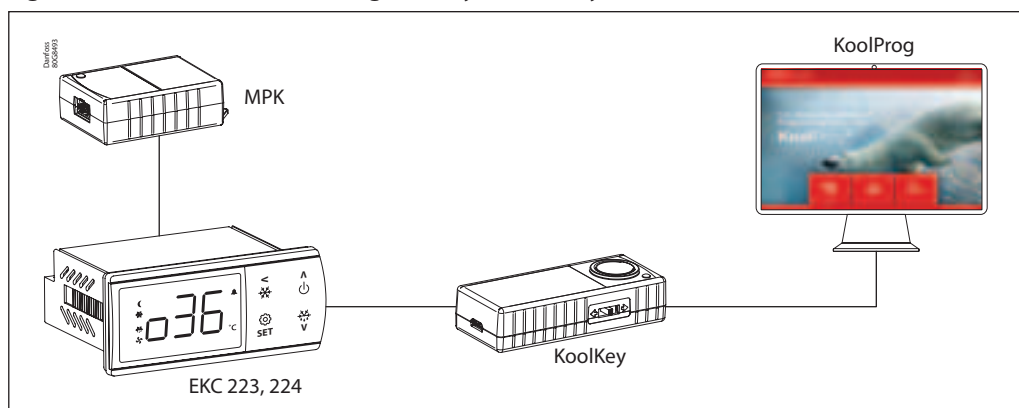
**Fig 5: Connection for EKF1A/2A using KoolKey as a Gateway.**



**Fig 6: Connection for EIM365 using ICPCON**



**Fig 7: Connection for EKC 22x using KoolKey as Gateway**





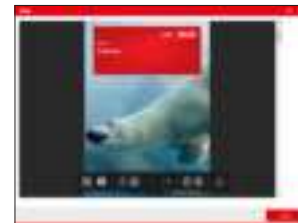
## 6. Starting the program



Double click on the desktop icon to launch the KoolProg application.



Help



Preferences



### The program's features

To create new parameter setting files either by importing them from the controller or off-line.

To program the parameter setting file and upgrade firmware in the connected controller.

To edit settings/trend graphs of the controller parameters in real-time.



Choose the preferred language



Select the units you prefer to work with: Metric (°C and bar), Imperial (°F and PSI)

When 'Select All' checkbox is enabled, it will select all the controllers in the controller group.

Select the controller type you are using. By default all controller types are selected, however by selecting only the controller type you are connecting will reduce the connection time.

### Accessibility

Users with a password have access to all features.

Users without a password have limited access and may only be able to use the 'Copy to controller' feature.



## 7. Set parameters



This feature allows you to configure parameter settings for your application.

Click one of the icons in the right column to either create a fresh configuration off-line, to import settings from a connected controller or to open an already saved project.

You can see projects you have already created under "Open a recent setting file".

**New**



Create a new project by selecting:

- Controller type
- Part number (code number)
- PV (product version) number
- SW (software) version

Once you have selected a file, you need to name the project.

Click 'Finish' to proceed to view and set parameters.



**Note:** Only standard code numbers are available to choose from in the "Code Number" field. To work off-line with a non-standard code number (customer specific code number), use one of the following two methods:

1. Connect the controller of same code number with KoolProg using Gateway, and use "Import settings from Controller" to create a configuration file from it.
2. Use "Open" feature to open an existing locally saved file on your PC of same code number and create a new file from it.

The new file, saved on your PC locally, can be accessed offline in future without having to connect the controller.



## Import settings from controller

Allows you to import a configuration from a connected controller to KoolProg and to modify the parameters offline.

Select "Import settings from controller" to import all parameters and the details from the connected controller to the PC.

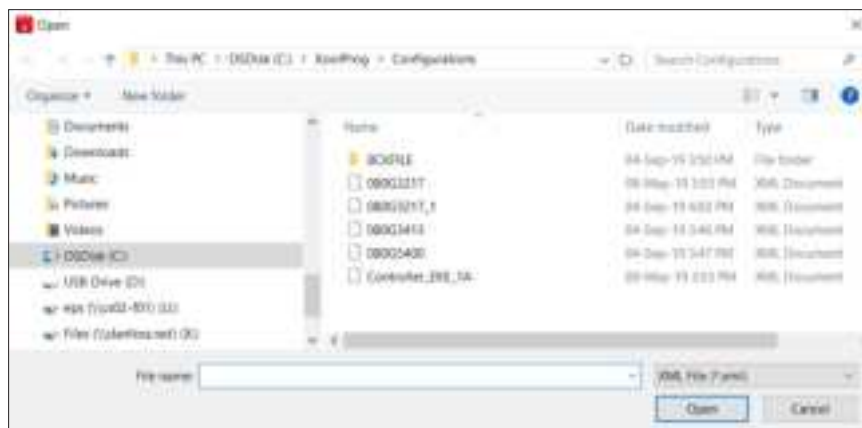


After "Import completed", save the imported setting file by providing the file name in the pop-up message box.



Now the parameter settings can be worked upon offline and can be written back to the controller by pressing "Export". While working offline, the connected controller is shown grayed out and changed parameter values are not written to the controller until the export button is pressed.

## Open





The "Open" command lets you open setting files already saved to the computer. Once the command is clicked, a window will appear with a list of saved setting files.

All projects are stored here in the folder: "KoolProg/Configurations" by default. You can change the default file saving location in "Preferences" .

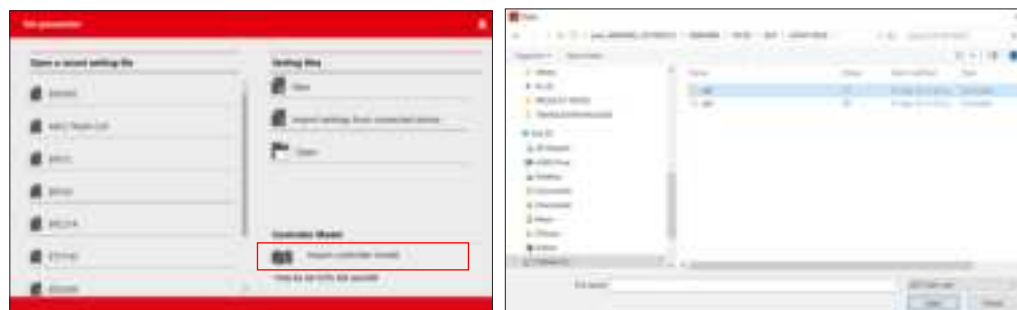
You can also open the setting files you have received from another source and saved in any folder using the browse option. Please note that KoolProg supports multiple file formats (*xml*, *cbk*) for different controllers. select the appropriate setting file format of the controller you are using.

**Note:** the *.erc/.dpf* format files of the ERC/ETC controller are not visible here. An *.erc* or *.dpf* file saved on your PC can be opened in one of the following ways:

1. Select "New Project" and go all the way to the Parameter list view of the same controller model. Select the Open button  to browse and open the *.erc/.dpf* file on your PC.
2. Select "Upload from controller" if you are connected to the same controller on-line and go to the parameter list view. Select Open button  to browse the desired *.erc/.dpf* file and view it in KoolProg.
3. Select "Open" to open any other *.xml* file of the same controller, reach the parameter list view screen, and there select the Open button to browse and select the *.erc/.dpf* file to view and edit these files.

## Import controller model (only for AK-CC55, EKF and EIM):






This allows you to import the controller model (*.cdf*) offline and generate a database in KoolProg. This will allow you to create a setting file offline without having the controller connected to KoolProg. KoolProg can import the controller model (*.cdf*) saved to the PC or any storage device.



# Set parameters - continued

## Info

### Headline

-  Home: The "Home" command will take you back to the Start Menu.
-  Open: The "Open" command lets you open an existing project.
-  Save: The "Save" command lets you save all the changes in the active project.
-  Save as: The "Save as" command allows you to save your controller settings as a new project.
-  Export: This command copies the parameter settings to the connected controller.

### Informational Photos

The project's data is shown on the left.  
The controller the program is connected to is shown on the right.

i = Controller information.

If the data are identical, these can then be transmitted to the controller.  
If they are **not** identical, then these cannot be transmitted. A warning message pops up.

By clicking the 'Print' icon, you can take print of the parameters in the active project.

### Arrow Up/Down

By clicking the arrow, you can hide the two photos and display more parameters in the window. Clicking it again causes the photos to re-appear.

### Factory reset

This command will reset the project/controller values to default factory settings.

### Arrow Left/Right

By clicking the arrow, you can hide the description of the selected parameters. Clicking it again causes the description to re-appear.

### View more

This command gives the complete technical description of the controller.

### Convert setting files

(only for AK-CC55 and ERC 11x):  
To convert setting files from one SW version to another SW version of same controller type.

Quick set-up wizard (only for AK-CC55):  
Helps to set up the controller quickly by configuring a few critical parameters and starting the system.

### Parameter settings field

### Dot Symbol

A dot symbol will appear in front of a value if it has been modified and is no longer identical to its factory default setting.

### Hint - Search Function

You can search for and display a specific parameter with the search function.  
Type in the first few letters of the name of the parameter and click "Search".

### Favourites

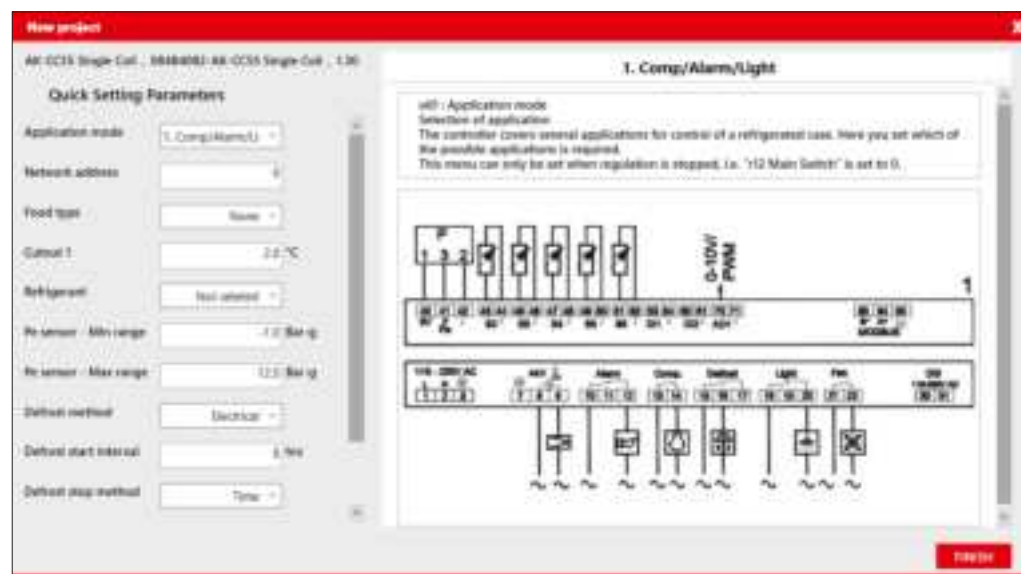
You can select a number of parameters by ticking the ones you want in the "stars" column.

Afterwards they will be visible in the "Favourites" folder (first column at the top).




### Quick set-up wizard (only for AK-CC55 and EKC 22x):

The user can run the quick set-up both off-line and on-line to set up the controller for the required application before moving on to the detailed parameter settings.



### Convert setting files (only for AK-CC55 and ERC 11x):

The user can convert the setting files from one software version to another software version of same controller type and can convert settings from both ways (lower to higher SW version and higher to lower SW version).

1. Open the setting file which needs to be converted in KoolProg under "Set parameter".
2. Click on convert setting .
3. Select the project name, code number and SW version / Product version of the setting file that needs to be generated and click OK.
4. A pop-up message with summary of conversion will be displayed at the end of conversion.
5. Converted file is displayed on the screen. Any parameters with orange dot indicates that the value of that parameter is not copied from the source file. It is suggested to review those parameters and make the necessary changes before closing the file, if required.



## 8. Copy to device



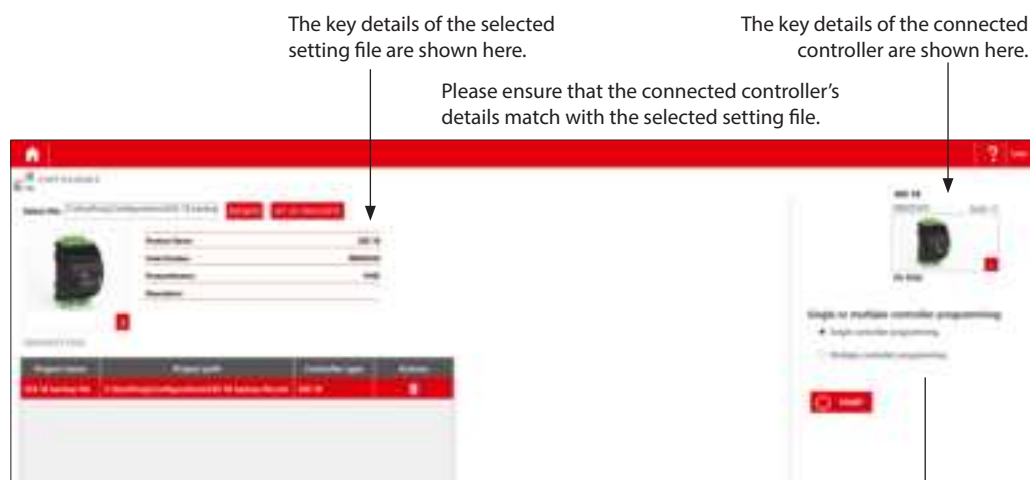
Here you can copy the setting files to the connected controller as well as upgrade the controller firmware. The firmware upgrade feature is only available for the selected controller model.



**Copy the setting files:** Select the setting file you want to program with the "BROWSE" command.

You can save a setting file in "Favorite Files" by clicking on the "Set as Favourite" button. The project will be added to the list and can be easily accessed later. (Click on the trash icon to remove a project from the list).

Once you have selected a setting file, the key details of the selected file are displayed.



If the project file and the connected controller match, data from the project file will be transmitted to the controller when you click the "START" button.

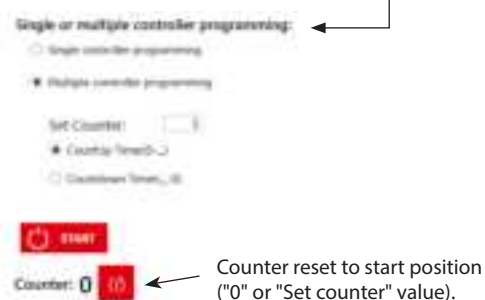
The program checks whether data can be transmitted. If not, a warning message pops up.

### Multiple Controller Programming

If you want to program multiple controllers with the same settings, use "Multiple Controller Programming."

Set the number of controllers to be programmed, connect the controller and click "START" to program the file - wait for the data to be transferred.

Connect the next controller and click "START" again.



1. Browse the firmware file (Bin file) you want to program – selected firmware file details are displayed on the left hand side.
2. If the selected firmware file is compatible with the connected controller, KoolProg enables the start button and will update the firmware. If it is not compatible, the start button remains disabled.
3. After a successful firmware update, the controller restarts and displays the updated details of the controller.
4. This feature can be fully protected by a password. If KoolProg is password protected, then when you browse the firmware file, KoolProg prompts for the password and you can only load the firmware file after entering the correct password.





## 9. On-line service



This allows you to monitor the real-time operation of the controller while it is running.

- You can monitor inputs and outputs.
- You can display a line chart based on parameters you have selected.
- You can configure settings directly in the controller.
- You can store line charts and settings and then analyze them.

**Open**  
Allows you to view prior line charts you have made from collected data.

**Save as**  
Allows you to save a project file containing all the controller's settings.

**Arrow Up/Down**  
Clicking the arrow allows you to hide the photo and the top block of information, so that more space is available on screen for parameter views. Clicking the arrow again makes it re-appear.

**The Trend Feature**  
If you want to chart the trend for a measurement, you can select what you want to view from this table. Tick the box of any parameter you would like to include in the chart. You can select a maximum of 10 parameters.

**Line Chart**  
Click the "Line Chart" button to switch over to the trend view. You can begin charting any measurements you want in the trend view.

### Alarms (only for AK-CC55):

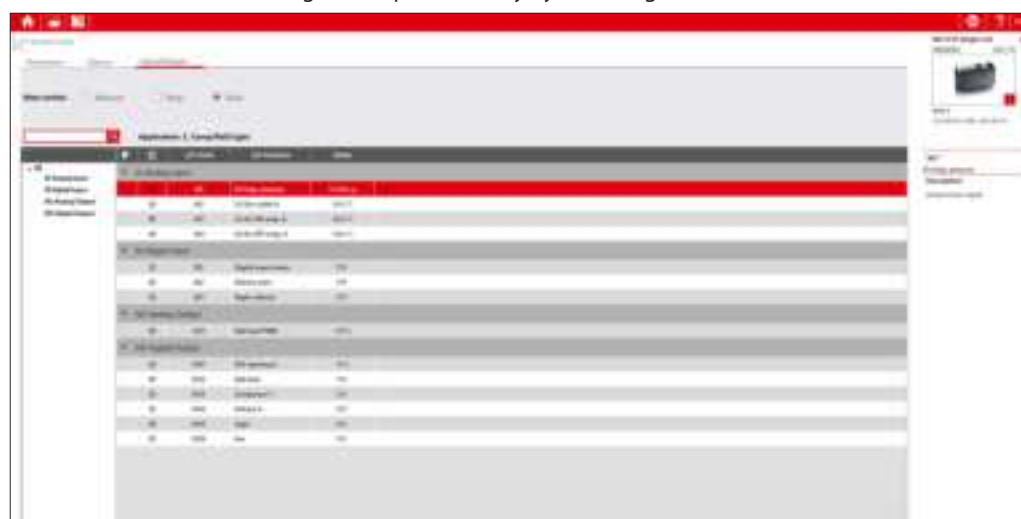
Under the "Alarms" tab, the user can view the active and historical alarms present in the controller with a time stamp.



ID	Description	Status	Time
001	Compressor overload	Active	2023-03-10 10:00:00
002	High pressure	Active	2023-03-10 10:00:00
003	Low pressure	Active	2023-03-10 10:00:00
004	High temperature	Active	2023-03-10 10:00:00
005	Low temperature	Active	2023-03-10 10:00:00
006	Compressor stop	Active	2023-03-10 10:00:00
007	High pressure	Active	2023-03-10 10:00:00
008	Low pressure	Active	2023-03-10 10:00:00
009	High temperature	Active	2023-03-10 10:00:00
010	Low temperature	Active	2023-03-10 10:00:00
011	Compressor stop	Active	2023-03-10 10:00:00
012	High pressure	Active	2023-03-10 10:00:00
013	Low pressure	Active	2023-03-10 10:00:00
014	High temperature	Active	2023-03-10 10:00:00
015	Low temperature	Active	2023-03-10 10:00:00
016	Compressor stop	Active	2023-03-10 10:00:00
017	High pressure	Active	2023-03-10 10:00:00
018	Low pressure	Active	2023-03-10 10:00:00
019	High temperature	Active	2023-03-10 10:00:00
020	Low temperature	Active	2023-03-10 10:00:00

### IO Status and Manual Override:

The user can get an instant overview of configured inputs and outputs and their status under this group. The user can test the output function and electrical wiring by putting the controller into manual override mode and controlling the output manually by switching them ON and OFF.



ID	Name	Status	Manual Override
001	High pressure	Active	ON
002	Low pressure	Active	ON
003	High temperature	Active	ON
004	Low temperature	Active	ON
005	Compressor stop	Active	ON
006	High pressure	Active	ON
007	Low pressure	Active	ON
008	High temperature	Active	ON
009	Low temperature	Active	ON
010	Compressor stop	Active	ON
011	High pressure	Active	ON
012	Low pressure	Active	ON
013	High temperature	Active	ON
014	Low temperature	Active	ON
015	Compressor stop	Active	ON
016	High pressure	Active	ON
017	Low pressure	Active	ON
018	High temperature	Active	ON
019	Low temperature	Active	ON
020	Compressor stop	Active	ON

## Trend Charts

The program only saves data if the "Save chart" box is checked.  
If you want to save the collected data in another file format, use the "Save As" command. This enables you to save data in a .csv/.png file format.  
After saving an image, the chart can be viewed later in selected file format.

The screenshot shows the KoolProg Trend Charts interface. It features a main chart area displaying multiple colored lines representing different data series over time. Below the chart is a table with columns for parameter names and checkboxes. Annotations with arrows point to various controls:

- Log interval:** A dropdown menu set to "3 Sec interval". Annotation: "You can change how often you want to record a value by changing the log interval."
- Log period:** A dropdown menu set to "Manual". Annotation: "You can change the duration for which the data has to be collected by changing the log period."
- Save chart:** A checkbox that is checked. Annotation: "You can start or stop data logging by clicking the corresponding buttons."
- Stop:** A red button next to the Save chart checkbox. Annotation: "You can start or stop data logging by clicking the corresponding buttons."
- Zoom Level:** A control in the top right corner. Annotation: "You can set the time interval for the time labels on the x-axis by modifying 'Label'."
- Parameter Table:** A table at the bottom with checkboxes. Annotation: "You can stop a parameter from trending by unchecking the box in front of that parameter."

## 10. Unknown controller support

(Only for ERC 112 & ERC 113 controllers)

If a new controller is connected, the database of this is not already available in the KoolProg, but you can still connect to the controller in on-line mode. Select "Import settings from connected device" or "On-line service" to view the parameter list of the connected controller. All new parameters of the connected controller will be displayed under the separate menu group "New Parameters". The user can edit the parameter settings of the connected controller and save the setting file on the PC to mass program using "Programming EKA 183A (Code no. 080G9740)".

**Note:** a saved setting file created in this way cannot be re-opened in KoolProg.

Fig 9: Unknown controller connection under "Import settings from connected device":



Fig 10: Unknown controller connection under "On-line service":



Please contact your nearest sales representative for further assistance.

## Danfoss A/S

Climate Solutions • danfoss.com • +45 7488 2222

Any information, including, but not limited to information on selection of product, its application or use, product design, weight, dimensions, capacity or any other technical data in product manuals, catalogues descriptions, advertisements, etc. and whether made available in writing, orally, electronically, online or via download, shall be considered informative, and is only binding if and to the extent, explicit reference is made in a quotation or order confirmation. Danfoss cannot accept any responsibility for possible errors in catalogues, brochures, videos and other material. Danfoss reserves the right to alter its products without notice. This also applies to products ordered but not delivered provided that such alterations can be made without changes to form, fit or function of the product.

All trademarks in this material are property of Danfoss A/S or Danfoss group companies. Danfoss and the Danfoss logo are trademarks of Danfoss A/S. All rights reserved.