



Kogan SmarterHome™ 3MP Outdoor Battery & Solar Powered Wireless Security Camera

(With Spotlight)

KASMCMODSLA

Safety & Warnings	3
Components	3
Overview	4
Installation	6
Connect to SmarterHome™ App	10
Google Home	13
Amazon Alexa	16
Operation	20
Specifications	23

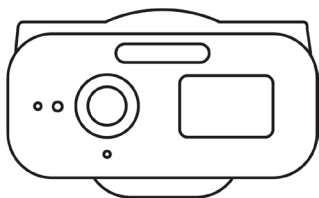
Safety & Warnings

Battery Warning

- Risk of fire or explosion if the battery is replaced with an incorrect type. Use only the specified battery type to avoid disabling safety features.
- Do not dispose of batteries in fire or a hot oven.
- Do not crush, cut, or mechanically damage the battery, as this may cause an explosion.
- Do not leave the battery in an environment with extremely high temperatures, as this may result in an explosion or leakage of flammable liquids or gases.
- Do not expose the battery to extremely low air pressure, as this may result in an explosion or leakage of flammable liquids or gases.
- Do not dismantle or modify this product in any way.

Components

Lay all components out on a clean floor and ensure all parts are included. If any pieces are missing, check all packaging thoroughly, then contact **help.Kogan.com** for assistance.



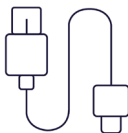
Camera



Mounting Bracket



Mounting Hardware

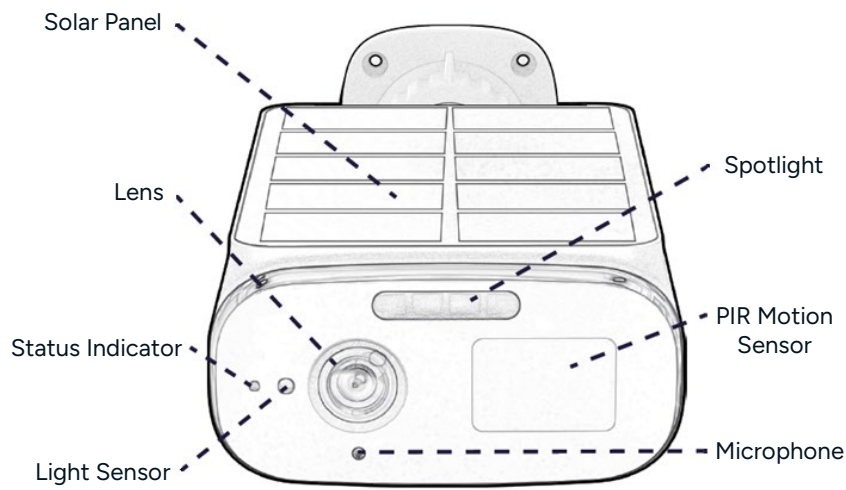


USB Cable



User Guide

Overview

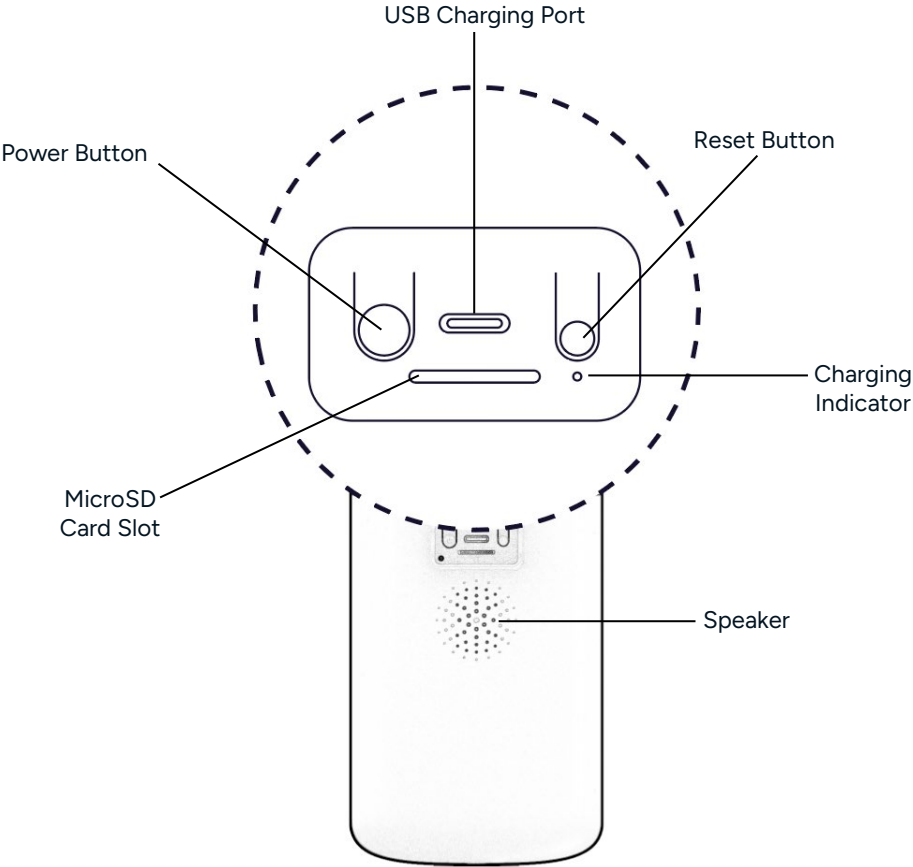


Indicators

Status Indicator	Description
Slowly flashing red	Ready to connect (pairing mode)
Rapidly flashing red	Disconnected from the Wi-Fi network
Slowly flashing blue	Connected to the router successfully
Flashing blue and red alternately	A firmware update is in progress

Charging Indicator	Description
Solid red	Battery is charging
Solid blue	Charging completed
Flashing indicator light	Charging failure, disconnect and reconnect charging cable.

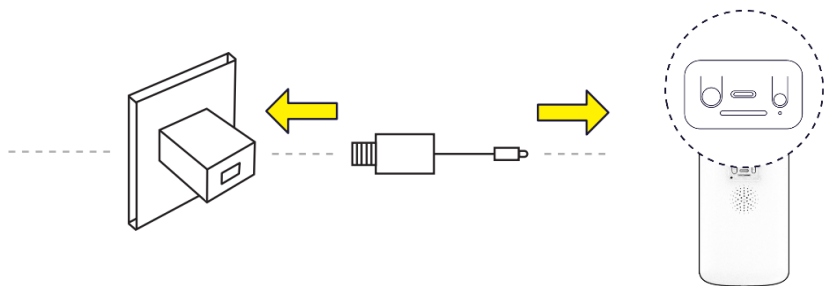
Underside of Camera



Installation

Charging the Camera

Before mounting the camera, ensure it is fully charged. Use the supplied USB Charging Cable and connect it to the USB Power Adaptor. Allow the camera to charge completely before first use.



Charging Indicator	Description
Solid red	Battery is charging
Solid blue	Charging completed
Flashing indicator light	Charging failure, disconnect and reconnect charging cable.

Note:

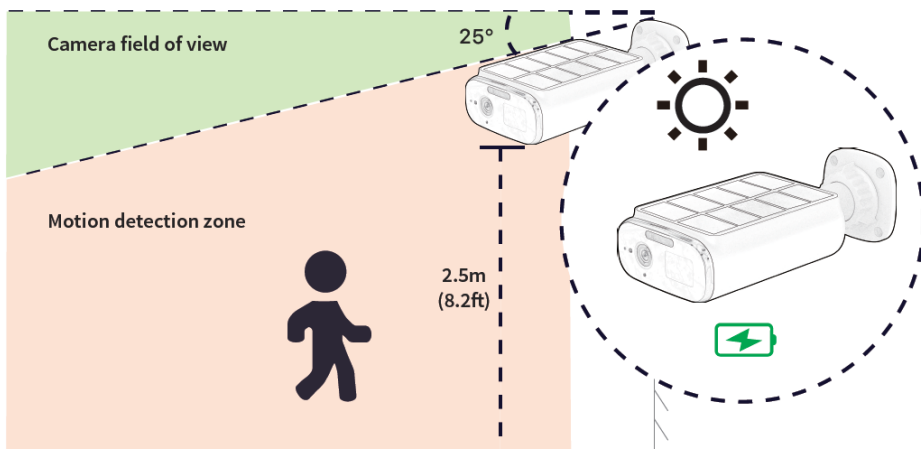
The camera will continue to charge via the solar panel during normal use.

Insert microSD Card

Open the waterproof cover on the underside of the camera and insert a microSD card (not provided) (256gb max.) into the microSD card slot.

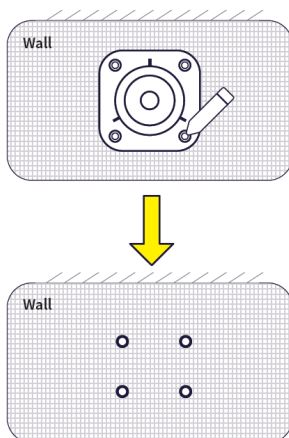
Select a Location

- The camera should be mounted to a wall. Select a location that provides the desired camera view and allows the solar panel to receive direct sunlight.
- Ensure the location is within range of your home Wi-Fi network.
- For optimal performance, it is recommended to mount the camera approximately 2.5m (8.2ft) above the ground.

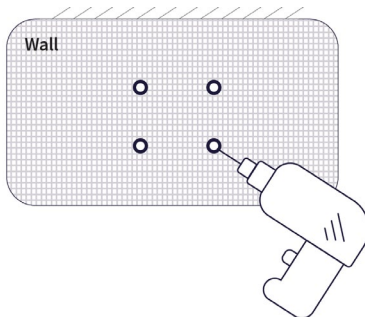


Mount the Camera

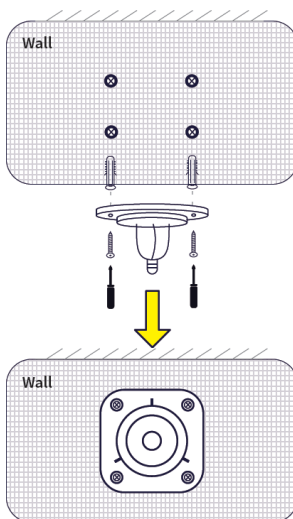
1. Use the Mounting Bracket as a template to mark the 4 mounting points on the wall.



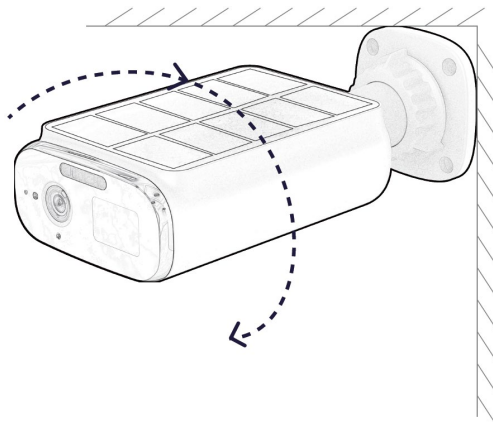
2. Drill 4 holes in the marked spots.



3. If mounting into concrete or masonry, insert the supplied wall anchors into the holes. Then secure the Mounting Bracket to the wall with using the supplied screws. If mounting to wood, wall anchors are not required.

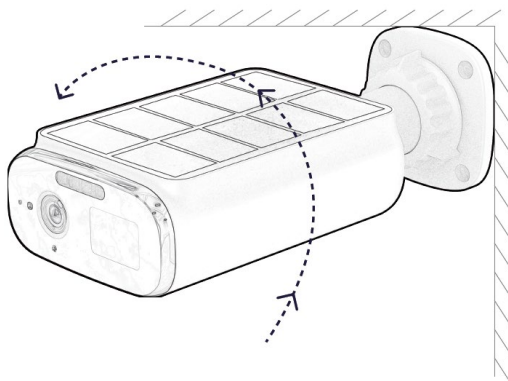


4. Align the hole at the bottom of the camera with the Mounting Bracket and rotate the camera clockwise to secure the Camera to the Mounting Bracket.
5. Use the live feed on the SmarterHome™ App to ensure the camera field of vision is correct. Adjust the camera to your desired view.



Removing the Camera

Hold the main body of the Camera, then rotate anticlockwise to remove the camera from the Mounting Bracket.



Connect to the SmarterHome™ App

Install the App

Download the Kogan SmarterHome™ app from the Apple App Store (iOS) or the Google Play Store (Android).



App Store (iOS)

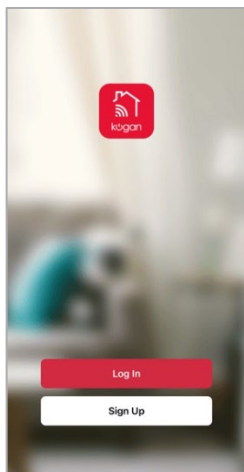


Play Store (Android)



Log In or Sign Up

1. If you already have a SmarterHome account, tap 'Log In'. To register a new account, tap 'Sign Up'.
2. The app will automatically recognise your country. If needed, you can manually select your country from the drop down menu. Enter your email address, agree to the Privacy Polics and User Agreement, and tap 'Get Verification Code' to continue.
3. A 6-digit code will be sent to the submitted email address. Enter the code before the one-minute timer expires.



<



Register

Australia

Email Address

☐ I agree to the [Privacy Policy](#) and [User Agreement](#)

Get Verification Code

<


Enter Verification Code

1 2 3

4 5 6

7 8 9

0



A verification code has been sent to your email shamnonmctcde@outlook.com. Resend (58s)

[Didn't get a code?](#)

- 4. Enter a password that uses 6-20 characters with a mix of letters and numbers and tap 'Done'.
- 5. Enable the permissions and tap 'Go to App'.

<

Set Password

Password

Use 6-20 characters with a mix of letters and numbers

Done

Go to App

To provide you with better services, we request the following permissions:

The following functions can be enabled or disabled in the app settings.

Service Maintenance & Improvement Activity

Allow us to collect data related to product usage. Basic functionality will still be available if permissions are disabled, but the experience optimization policy based on data preferences will be ineffective.

Personalized Recommendations

Allow us to recommend content to you, including experience optimization, scene linkage, and best usage advice for devices. If you disable this function, we will no longer send you potentially interesting content.

No devices

Add Device

Home

Scene

Me

Set the Device in Pairing Mode

When the device is first turned on, it may automatically enter pairing mode (the indicator is slowly flashing red).

If not automatically in pairing mode when powered on, you can manually set the device in pairing mode by pressing and holding the 'Power' button until the voice prompt 'Waiting to receive the wireless configuration' is heard and the indicator is slowly flashing red.

Add the Device to the App

1. Open the SmarterHome™ app.
2. Tap the '+' icon in the top right corner of the screen and then tap 'Add Device'.
3. Tap 'Add' when the device appears. Alternatively, select the product type from the list of options in the app (Security > Cameras).
4. Follow the prompts to add your device to the app.

Notes:

- The device and the app must use the same Wi-Fi network.
- The device is only compatible with 2.4Ghz networks.

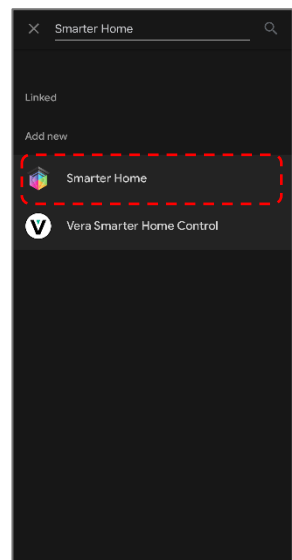
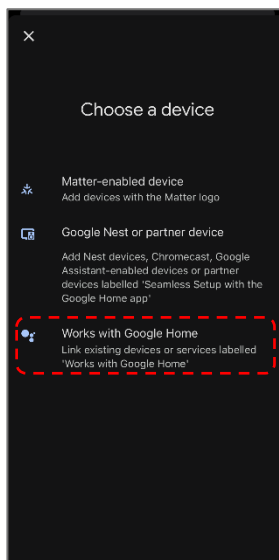
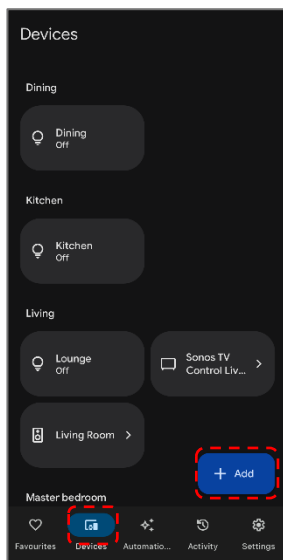
Connectivity Support

Scan the QR code below or go to <https://help.kogan.com/s/article/Kogan-SmarterHome-App-Connectivity-Support> and follow the pairing instructions for EZ mode.

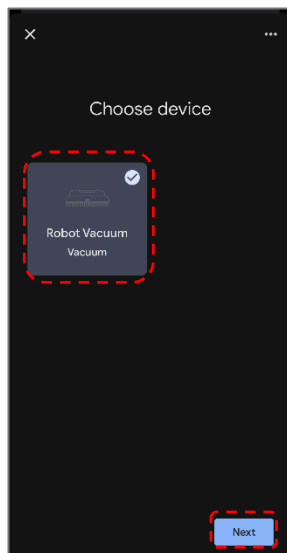
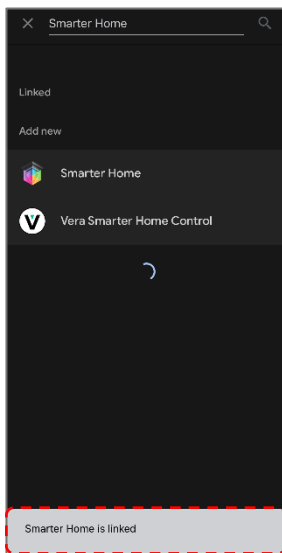
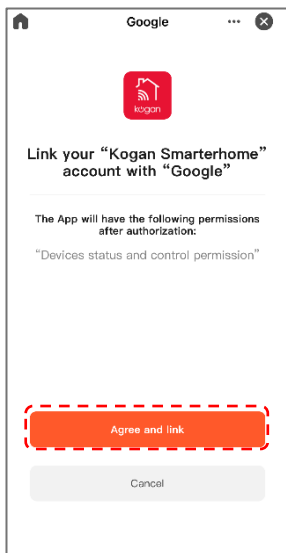


Google Home

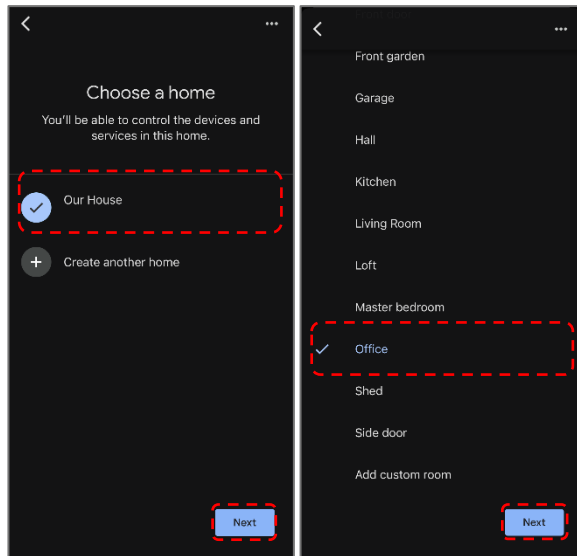
1. Ensure you are logged into the Kogan SmarterHome™ app.
2. Open the Google Home app.
3. Go to the devices tab and tap the '+ Add' button in the lower right corner.
4. Tap 'Works with Google Home'.
5. Search for 'Smarter Home' in the search bar and select 'Smarter Home' from the results.



6. Tap the 'Agree and link' button.
7. Search for 'Smarter Home' in the search bar and select 'Smarter Home' from the results.
8. Once linked, a 'Smarter Home is linked' pop-up will appear at the bottom of the screen.
9. Tap your device and then tap the 'Next' button.

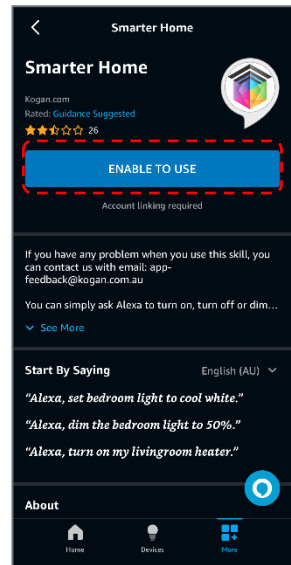
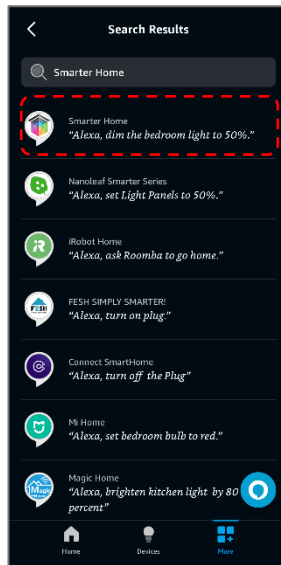
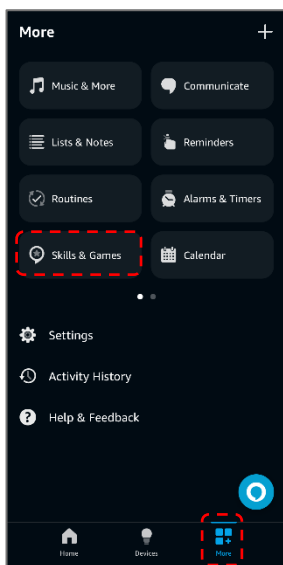


10. Select the home you wish to add the device to and tap the 'Next' button.
11. Select the room your device is in and tap the 'Next' button.

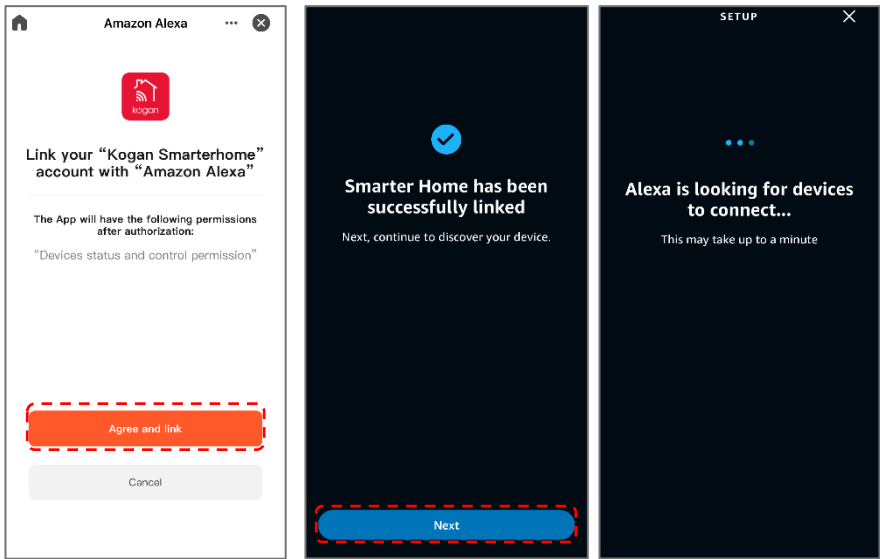


Amazon Alexa

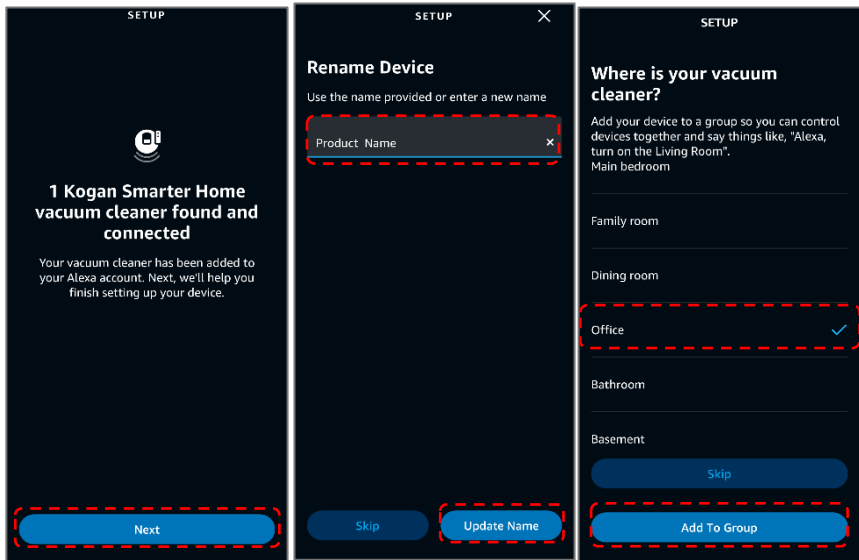
1. Ensure you are logged into the Kogan SmarterHome™ app.
2. Open the Amazon Alexa app.
3. Go to the 'More' tab and tap 'Skills & Games'.
4. Search for 'Smarter Home' in the search bar and select 'Smarter Home' from the results.
5. Tap the 'ENABLE TO USE' button.



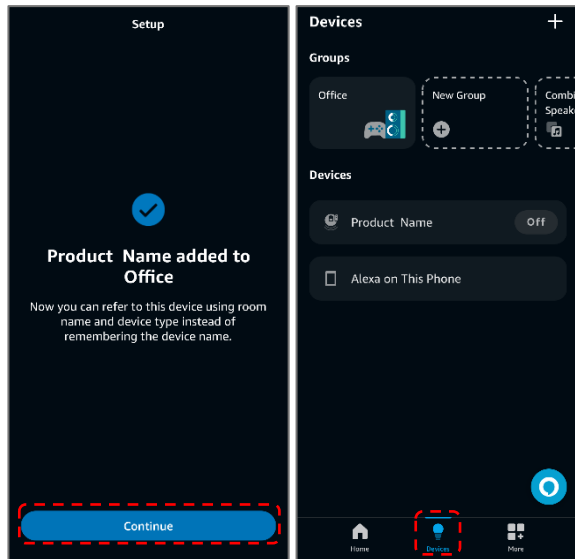
- 6. Tap the 'Agree and link' button.
- 7. Once linked, tap 'Next'. Alexa will search for any compatible devices.



8. Once your device has been found, tap 'Next'.
9. Rename the device to your desired name and tap 'Update Name'.
10. Select the room your device is in and tap 'Add To Group'

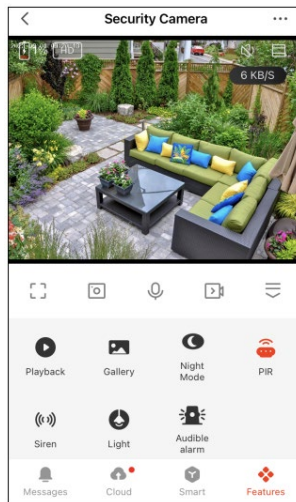


11. Once the device has been successfully added to your desired room, tap 'Continue'.
12. You can view and manage your device from the 'Devices' tab.



Operation

Live view interface, click '...' to access the camera settings and additional functions.



Two-way audio

You can see and hear the visitors from the camera in your SmarterHome™ app.

Full Colour Vision

The use of white light ensures that pictures and videos captured during motion detection are presented in vivid colour, enhancing overall visibility for a more detailed and clear vision.

PIR Motion Detection

- Built-in motion sensor detects movement, and the camera will send push notifications and app alerts.
- When someone passes by, an alarm will be triggered and sent to phone.

Alerts

When the alarm is triggered at night, the camera will activate both sound and light notifications.

Low Battery

- A low battery warning is triggered when the battery level reaches 20%. A shutdown warning is triggered when it reaches 5%.
- If the camera is not receiving enough sunlight to charge, you may need to fully charge it via USB before resuming operation. Consider adjusting the solar panel to receive more direct sunlight.

Spotlight Control Modes

The spotlight can be controlled through the SmarterHome app. Two lighting modes are available:

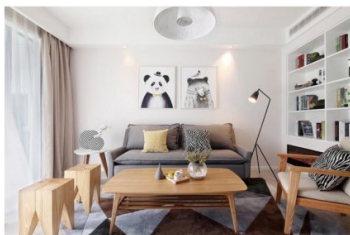
- **Manual Control:** Turn the spotlight on manually via the app and adjust the brightness as needed.
- **Night Vision Mode:** The spotlight will automatically turn on when motion is detected in low light conditions.

Record

Use a microSD card (256gb max.) to keep recording for every moment.

Day & Night

Never miss a moment, even in complete darkness, with powerful night-vision technology.



Note:

The PIR motion sensor will occasionally false trigger depending on the camera's environment. This is completely normal and not an indication of improper operation or product fault.

Siren Function

When the alarm function is enabled in the SmarterHome app, the camera will emit an audible alarm after detecting motion or another event. If you do not wish to use this feature, it can be turned off in the app settings.

App Device Settings

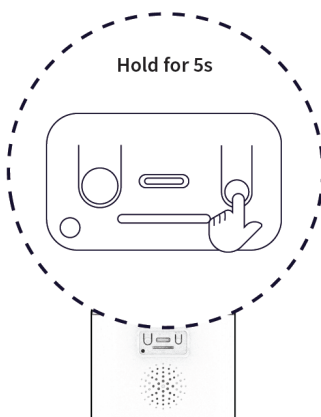
Changes made to the device settings in the SmarterHome app will only take effect after the device enters sleep mode and wakes up again. For example, if you enable the Siren Function in the app, it will only become active after the next wake-up cycle of the device.

Battery Life

- Without sunlight, the camera can operate for up to 3 months based on an average of 20 triggers per day (10 during the day and 10 at night).
- The camera's integrated solar panel and can operate continuously with at least 4 hours of direct sunlight per day.

Resetting the Device

- If the SSID or settings of your home Wi-Fi network have changed, you will need to reconfigure the device.
- Press and hold the reset button for 5–6 seconds until you hear the voice prompt "Reset successfully."
- Follow the prompts in the SmarterHome app to add the device again.



Specifications

Resolution	2K
FOV(H/V/D)	100°/52°/122°
Lens	3.5mm@F2.0
IR LED	8m
Spotlight	8m
Audio	Built-in Mic /Speaker
PIR	8m (100°)
Waterproof Rating	IP66
Solar Panel	Max. 1.2W
Storage	microSD Card (Max 256G)
Wi-Fi	2.4GHz
Network Security	WPA-PSK/WPA2-PSK, WPA/WPA2, WEP
Battery Capacity	5200mAh
Weight	315g
Dimensions (L x W x H)	129x84x42mm
Charging	USB-C, DC5V/1.0A
Operating Temp	-20 - 50°C
Solar Charging Temp	0 - 45°C

Need more information?

We hope that this user guide has given you the assistance needed for a simple set-up.

For the most up-to-date guide for your product, as well as any additional assistance you may require, head online to **help.Kogan.com**.

