



RSA1Z\*\*\*  
RSA1S\*\*\*  
RSA1U\*\*\*  
RSA1D\*\*\*  
RSA1N\*\*\*  
RSA1V\*\*\*  
SRS582NLS  
SRS565DHLS

# Refrigerator user manual

Free Standing Appliance

English

imagine the possibilities

Thank you for purchasing a Samsung product.  
To receive a more complete service,  
please register your product at  
[www.samsung.com/global/register](http://www.samsung.com/global/register)

条形码

DA68-02439C-22

**SAMSUNG**

# features of your new refrigerator

---

## KEY FEATURES OF YOUR NEW REFRIGERATOR

---

Your Samsung Side-By-Side Refrigerator comes equipped with many space-saving, innovative storage and energy-efficient features.

- **HIDDEN HINGES & DOOR S/W**

Slick-covered hidden hinges & door s/w helps Neat & Stylish square frontal view.

- **CoolSelect Duo (Optional)**

The customizable CoolSelect Duo lets you choose between meat and vegetable mode depending on your needs. In meat mode, your deli items and meats keep their juicy texture and freshness. In vegetable mode, the box maintains optimal humidity for fruits and vegetables, transforming into a perfect crisper to keep them fresh longer. Now, you always have food at its freshest.

- **BLACK CLEAR LED DISPLAY**

With luxurious black window, you can look and feel neat & clear design.

---

## SAMSUNG

For easy future reference write the model and serial number down. You will find your model number on the left hand side wall of the refrigerator.

Model # \_\_\_\_\_

Serial # \_\_\_\_\_

# safety information

## SAFETY INFORMATION



- Before operating the appliance, please read this manual thoroughly and retain it for your reference.



- Because these following operating instructions cover various models, the characteristics of your refrigerator may differ slightly from those described in this manual.



- This appliance is intended to be used in household and similar applications such as
  - staff kitchen areas in shops, offices and other working environments;
  - farm houses and by clients in hotels, motels and other residential type environments;
  - bed and breakfast type environments;
  - catering and similar non-retail applications.

### CAUTION/WARNING SYMBOLS USED

	Indicates that a danger of death or serious injury exists.
	Indicates that a risk of personal injury or material damage exists.

### OTHER SYMBOLS USED

	Represents something you must NOT do.
	Represents something you must NOT disassemble.
	Represents something you must NOT touch.
	Represents something you must follow.
	Indicates that you must disconnect the power plug from the socket.
	Represents a ground is needed to prevent electric shock.
	It is recommended that this symbol be handled by service man.

**These warning signs are here to prevent injury to you and others. Please follow them explicitly.**  
**After reading this section, keep it in a safe place for future reference.**

# safety information

---

- This refrigerator must be properly installed and located in accordance with the manual before it is used.
- Use this appliance only for its intended purpose as described in this instruction manual.
- We strongly recommend that any servicing be performed by a qualified individual.
- R600a or R134a can be used as a refrigerant. Check the compressor label on the rear of the appliance and the rating label inside the fridge to see which refrigerant is used for the refrigerator.



- In case of R600a refrigerant, this gas is natural gas with high environmental compatibility that is, however, also combustible. When transporting and installing the appliance, care should be taken to ensure that no parts of the refrigerating circuit are damaged.
- Refrigerant squirting out of the pipes could ignite or cause an eye injury. If a leak is detected, avoid any naked flames or potential sources of ignition and air the room in which the appliance is standing for several minutes.



- In order to avoid the creation of a flammable gas-air mixture if a leak in the refrigerating circuit occurs, the size of the room in which the appliance may be sited depends on the amount of refrigerant used.
- Never start up an appliance showing any signs of damage. If in doubt, consult your dealer.
- The room must be 1m<sup>3</sup> in size for every 8g of R600a refrigerant inside the appliance.
- The amount of refrigerant in your particular appliance is

# safety information

---

shown on the identification plate inside the appliance.

- Please dispose of the packaging material for this product in an environmentally friendly manner.
- Pull the power plug out of the socket before changing the interior light of the refrigerator.
- Otherwise, there is a risk of electric shock.

## SEVERE WARNING SIGNS

---



- Do not install the refrigerator in a damp place or place where it may come in contact with water.
  - Deteriorated insulation of electrical parts may cause an electric shock or fire.
- Do not place this refrigerator in direct sunlight or expose to the heat from stoves, room heaters or other appliance.
- Allow sufficient space to install the refrigerator on a flat surface.
  - If your refrigerator is not level, the internal cooling system may not work correctly.
- Do not plug several appliances into the same multiple power board. The refrigerator should always be plugged into its own individual electrical which has a voltage rating that matched the rating plate.
  - This provides the best performance and also prevents overloading house wiring circuits, which could cause a fire hazard from overheated wires.
- Never unplug your refrigerator by pulling on the power cord. Always grip plug firmly and pull straight out from the outlet.
  - Damage to the cord may cause a short-circuit, fire

# safety information



---

and/or electric shock.

- Make sure that the power plug is not squashed or damaged by the back of the refrigerator.
- Do not bend the power cord excessively or place heavy articles on it.
  - This constitutes a fire hazard.
- Have the power cord repaired or replaced immediately by the manufacturer or its service agent if power cord has become frayed or damaged.
- Do not use a cord that shows cracks or abrasion damage along its length or at either end.
- If the power cord is damaged, have it replaced immediately by the manufacturer or its service agent.
- When moving the refrigerator, be careful not to roll over or damage the power cord.
- Do not insert the power plug with wet hands.
- Unplug the refrigerator before cleaning and making repairs.
- Do not use a wet or damp cloth when cleaning the plug.
- Remove any foreign matter or dust from the power plug pins.
  - Otherwise there is a risk of fire.
- If the refrigerator is disconnected from the power supply, you should wait for at least ten minutes before plugging it back.

# safety information

---

- If the wall socket is loose, do not insert the power plug.
  - There is a risk of electric shock or fire.
- The appliance must be positioned so that the plug is accessible after installation.
-  • The refrigerator must be grounded.
  - You must ground the refrigerator to prevent any power leakages or electric shocks caused by current leakage from the refrigerator.
-  • Never use gas pipes, telephone lines or other potential lightening rods as ground.
  - Improper use of the ground plug can result in electric shock.
- Do not disassemble or repair the refrigerator by yourself.
  - You run risk of causing a fire, malfunction and/or personal injury.
- If you smell pharmaceutical or smoke, pull out power plug immediately and contact your Samsung electronics service center.
- Keep ventilation opening in the appliance enclosure or mounting structure clear of obstruction.
- Do not use mechanical devices or any other means to accelerate the defrosting process, other than those recommended by the manufacturer.
- Do not damage the refrigerant circuit.
- Do not place or use electrical appliance inside the refrigerator/freezer, unless they are of a type recommended by the manufacturer.

# safety information

---

- Children should be supervised to ensure that they do not play with the appliance.
- The appliance is not to be used by persons (including children) with reduced physical, sensory or mental capabilities, or lack of experience and knowledge, unless they have been given supervision or instruction concerning use of the appliance by a person responsible for their safety.
- Do not let children hang on the door. If not, a serious injury may occur.
- Do not touch the inside walls of the freezer or products stored in the freezer with wet hands.
  - This may cause frostbite.
- If the refrigerator is not to be used for a long period of time, pull out the power plug.
  - Deterioration in the insulation may cause fire.
- Do not store articles on the top of the appliance.
  - When you open or close the door, the articles may fall and cause personal injury and/or material damage.
- It is hazardous for anyone other than an Authorised Service Person to service this appliance. In Queensland – the authorized Service Person MUST hold a Gas Work Authorisation or Licence for hydrocarbon refrigerants, to carry out Servicing or repairs which involve the removal of covers. (For Australia only)

# safety information

---

## CAUTION SIGNS

---



- This product is intended only for the storage of food in a domestic environment.
- Manufacturer's recommended storage times should be adhered to. Refer to relevant instructions
- Bottle should be stored tightly together so that they do not fall out.
- Do not place carbonated or fizzy drinks in the freezer compartment
- Do not overfill the refrigerator with food.
  - When you open the door, an item may fall out and cause personal injury or material damage.
- Do not put bottles or glass containers in the freezer.
  - When the contents freeze, the glass may break and cause personal injury.
- Do not spray inflammable gas near the refrigerator.
  - There is a risk of explosion or fire.
- Do not directly spray water inside or outside the refrigerator.
  - There is a risk of fire or electric shock.
- Do not store volatile or flammable substances in the refrigerator.
  - The storage of benzene, thinner, alcohol, ether, LP gas and other such products may cause explosions.
- If you have a long vacation planned, you must empty the refrigerator and turn it off.

# safety information

---

- Do not re-freeze frozen foods that have thawed completely.
- Do not store pharmaceuticals products, scientific materials or temperature-sensitive products in the refrigerator.
  - Products that require strict temperature controls must not be stored in the refrigerator.
- Do not put a container filled with water on the refrigerator.
  - If spilled, there is a risk of fire or electric shock.
- Do not apply strong shock or excessive force onto the surface of glass.
  - Broken glass may result in a personal injury and/or property damage.

## **CAUTION SIGNS FOR CLEANING**

---

- Do not insert your hands into the bottom area under the appliance.
  - Any sharp edges may cause personal injury.
- Never put fingers or other objects into the dispenser hole and ice chute.
  - It may cause personal injury or material damage.
- Do not use a wet or damp cloth when cleaning the plug, remove any foreign material or dust from the power plug pins.
  - Otherwise there is a risk of fire.
- If the refrigerator is disconnected from the power supply, you should wait for at least five minutes before plugging it back.

# safety information

---

## **WARNING SIGNS FOR DISPOSAL**

---

- When disposing of this or other refrigerator/s, remove the door/door seals, door latch so that small children or animals cannot become trapped inside.
- Leave the shelves in place so that children may not easily climb inside.
- R600a or R134a is used as a refrigerant. Check the compressor label on the rear of the appliance or the rating label inside the fridge to see which refrigerant is used for your refrigerator. When this product contains flammable gas(Refrigerant R600a) contact your local authority in regard to safe disposal of this product.
- Cyclopentane is used as a insulation blowing gas. The gases in insulation material require special disposal procedure. Please contact your local authorities in regard to the environmentally safe disposal of this product. Ensure that none of the pipes on the back of the appliances are damaged prior to disposal. The pipes shall be broke in the open space.



In the event of a power failure, call the local office of your Electricity Company and ask how long it is going to last.

Most power failures that are corrected in an hour or two will not affect your refrigerator temperatures. However, you should minimize the number of door

# safety information

---

openings while the power is off. But should the power failure last more than 24 hours, remove all frozen food. For doors or lids fitted with locks and keys, the keys be kept out of the reach of children and not in the vicinity of the refrigerating appliance, in order to prevent children from being locked inside.



There is protective film on the surface of some refrigerator models, which is used to protect the refrigerator from scratches during transport. To avoid static electricity, please peel off the protective film slowly. If the protective film is not removed for a long time, it may cause color shading of the steel plate.

## ADDITIONAL TIPS FOR PROPER USAGE

---



- Allow the appliance to stand for 2 hours after installation.
- To get best performance of product,
  - Do not place foods too closely in front of the vents at the rear of the appliance as it can obstruct free air circulation in the freezer compartment.
  - Wrap the food up properly or place it in airtight containers before put it into the fridge freezer
  - Do not put any newly introduced food for freezing near to already frozen food.
- Do not place carbonated or fizzy drinks in the freezer compartment
- Please observe maximum storage times and expiry dates of frozen goods.

# safety information

---

- There is no need to disconnect the refrigerator from the power supply if you will be away for less than three weeks. But, remove all the food if you are going away for the three weeks or more. Unplug the refrigerator and clean it, rinse and dry.
- Most power failures that are corrected in an hour or two will not affect your refrigerator temperatures. However, you should minimize the number of door openings while the power is off. But should the power failure last more than 24hours, remove all frozen food.
- If the key is provided with refrigerator, the keys should be kept out of the reach of children and not in the vicinity of the appliance.
- The appliance might not operate consistently (possibility of defrosting of contents or temperature becoming too warm in the frozen food compartment) when sited for an extended period of time below the cold end of the range of temperatures for which the refrigerating appliance is designed.
- Do not store food which goes bad easily at low temperature, such as bananas, melons.
- Place the ice tray at the originally provided position by manufacturer in order to achieve optimal ice-freezing.
- Your appliance is frost free, which means there is no need to manually defrost your appliance, as this will be carried out automatically.
- Temperature rising during the defrost can comply

# safety information

---

with ISO requirement. But If you want to prevent an undue rise in the temperature of the frozen food while defrosting the appliance, please wrap the frozen food in several layers of paper such as newspaper.

- Any increase in temperature of frozen food during defrosting can shorten its storage life.

## **SAVING ENERGY TIPS**

---

- Install the appliance in a cool, dry room with adequate ventilation.
- Ensure that it is not exposed to direct sunlight and never put it near a direct source of heat (radiator, for example).
- Never block any vents or grilles on the appliance.
- Allow warm food to cool down before placing it in the appliance.
- Put frozen food in the refrigerator to thaw. You can then use the low temperatures of the frozen products to cool food in the refrigerator.
- Do not keep the door of the appliance open for too long when putting food in or taking food out.
- The shorter time for which the door is open, the less ice will form in the freezer.
- Clean the rear of the refrigerator regularly. Dust increases energy consumption.
- Do not set temperature colder than necessary.
- Ensure sufficient air exhaust at the refrigerator base and at the back wall of the refrigerator. Do not

# safety information

---

cover air vent openings.

- Allow clearance to the right, left, back and top when installing. This will help reduce power consumption and keep your energy bills lower.
- For the most efficient use of energy, please keep the all inner fittings such as baskets, drawers, shelves on the position supplied by manufacturer.

# contents

---

## **SETTING UP YOUR SIDE-BY-SIDE REFRIGERATOR**

# 17

- 17 Getting ready to install the refrigerator
- 18 Removing the refrigerator doors
- 21 Reattaching the refrigerator doors
- 24 Leveling the refrigerator

## **SETTING UP YOUR SIDE-BY-SIDE REFRIGERATOR**

# 25

- 25 Making minor adjustments to the doors
- 26 Checking the water dispenser line(optional)
- 27 Installing the water dispenser line

## **OPERATING THE SAMSUNG SIDE-BY-SIDE REFRIGERATOR**

# 30

- 30 Setting up the refrigerator
- 31 Operating the refrigerator
- 32 Using the digital display
- 33 Controlling the temperature
- 34 Using the ice and cold water dispenser
- 35 Shelves and bins
- 36 Storing food
- 38 CoolSelect Duo (Optional)
- 39 Removing the freezer accessories
- 40 Removing the fridge accessories
- 41 Cleaning the refrigerator
- 42 Changing the interior lights
- 43 Using the doors

## **TROUBLESHOOTING**

# 44

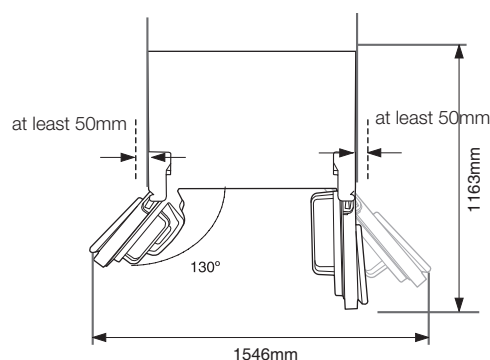
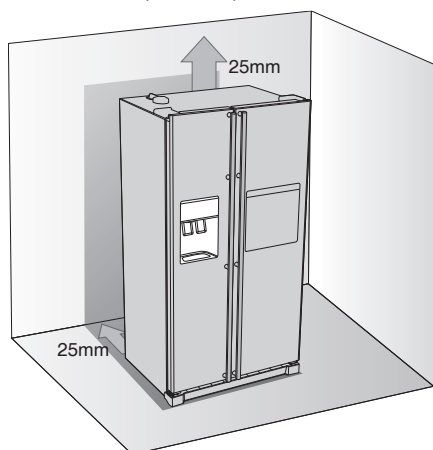
# setting up your side-by-side refrigerator

## GETTING READY TO INSTALL THE REFRIGERATOR

Congratulations on the purchase of your Samsung Side-By-Side Refrigerator. We hope you will enjoy the many state-of-the-art features and efficiencies that this new appliance has to offer.

### Selecting the best location for the refrigerator

- Select a location with easy access to the water supply.
- Select a location without direct exposure to sunlight.
- Select a location with level (or nearly level) flooring.
- Select a location with enough space for the refrigerator doors to open easily.
- Allow sufficient space to install the refrigerator on a flat surface.
  - If your refrigerator is not level, the internal cooling system may not work correctly.
  - Overall space required in use. Refer to drawing and dimension as below.



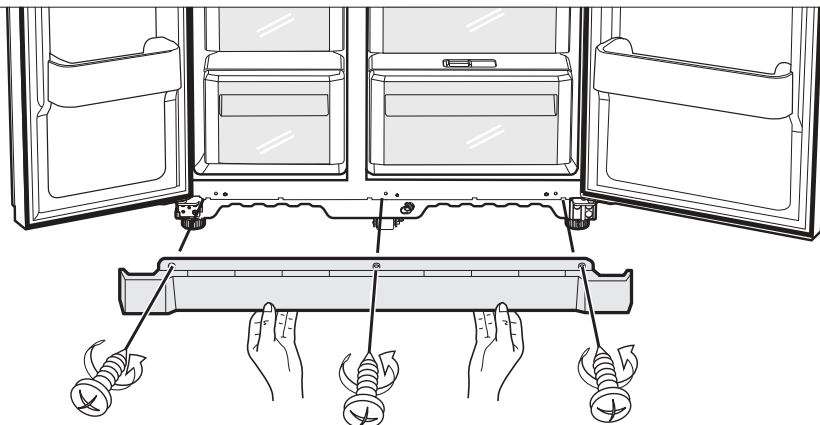
- Allow clearance to the right, left, back and top when installing. This will help reduce power consumption and keep your energy bills lower.
- Do not install the refrigerator where the temperature will go below 50°F (10°C).
- Make sure you disconnect the water supply line BEFORE removing the freezer door. See the next section on “Separating the Water Line” to avoid damage.

## REMOVING THE REFRIGERATOR DOORS

If your entrance won't allow the refrigerator to pass easily through it, you can remove the doors.

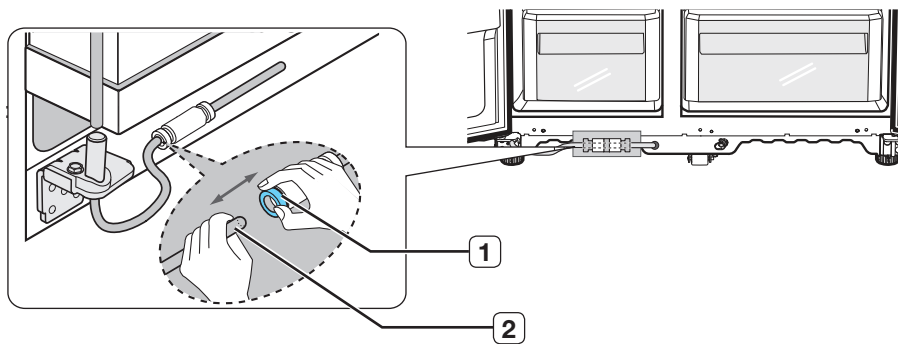
### 1. Removing the Front Leg Cover

First, open both the freezer and refrigerator doors, and then take off the front leg cover by turning the three screws counter-clockwise.



### Separating the Water Supply Line from the Refrigerator

1. Remove the water line by pressing the coupler **1** and pulling the water line **2** away.



Do not cut the water line. Gently separate it from the coupler.

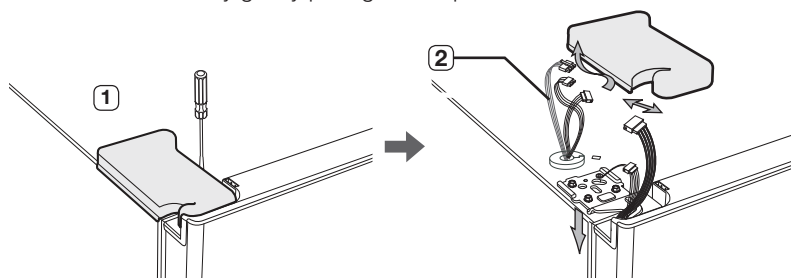
# setting up your side-by-side refrigerator

## 2. Removing the freezer door

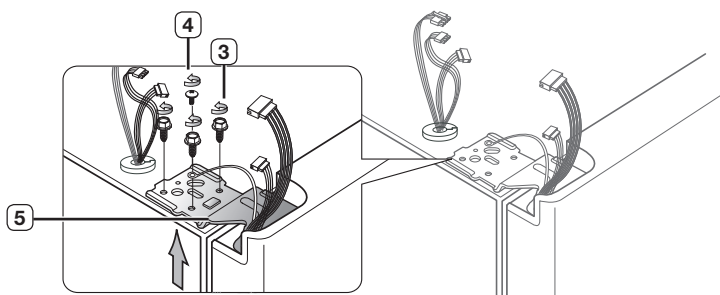
A few things to mention first.

- Make sure that you lift the door straight up so the hinges are not bent or broken.
- Be careful not to pinch the water tubing and wire harness on the door.
- Place doors on a protected surface to prevent scratching or damage.

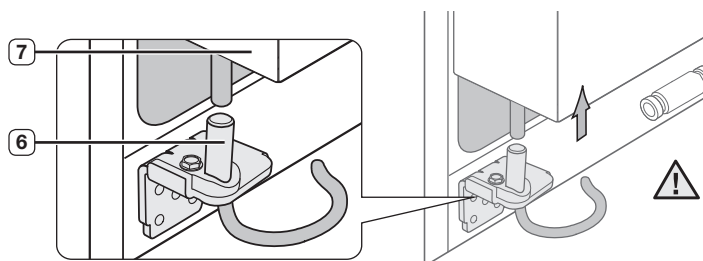
1. With the Freezer door closed, remove the upper hinge cover **1** using a screwdriver, and then disconnect the wires by gently pulling them apart **2**.



2. Remove hinge screws **3** and the ground screw **4** by turning counter-clockwise, and take off the upper hinge **5**. Be careful that the door does not fall on you as you are removing it



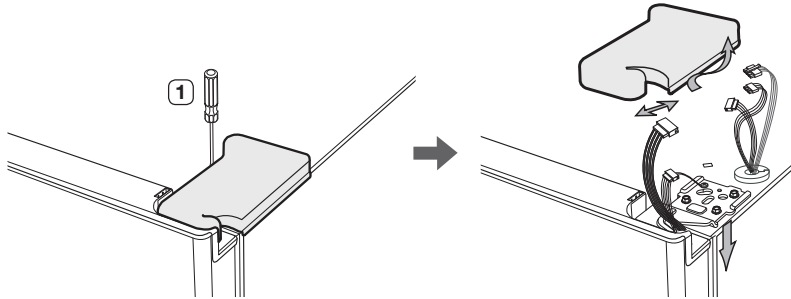
3. Next, remove the door from the lower hinge **6** by carefully lifting the door straight up **7**.



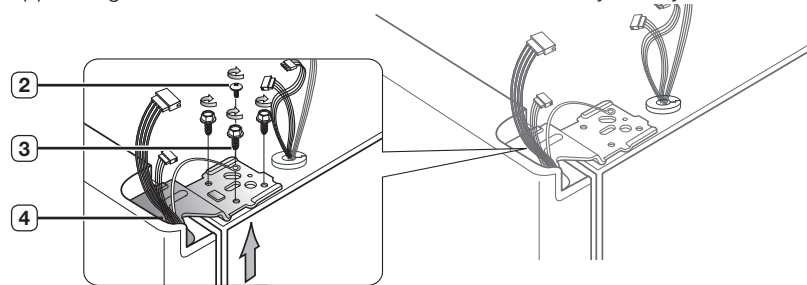
**!** Be careful not to pinch the water tubing and wire harness on the door.

## Removing the Fridge Door

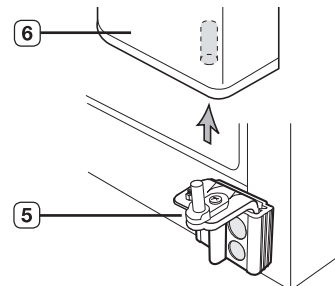
1. With the door closed, remove the upper hinge cover (1) using a screwdriver.



2. Remove hinge screws (2) and the ground screw (3) by turning counter-clockwise, and take off the upper hinge (4). Be careful that the door does not fall on you as you are removing it.



3. Remove the door from the lower hinge (5) by lifting the door straight up (6).



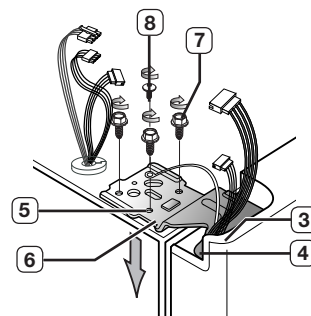
# setting up your side-by-side refrigerator

## REATTACHING THE REFRIGERATOR DOORS

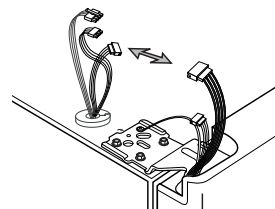
Once you have safely placed your refrigerator where you plan for it to stay, it is time to put the doors back on.

### Reattaching the Freezer Door

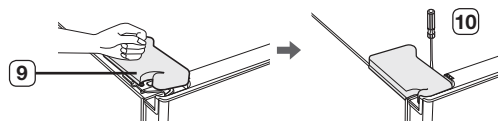
1. Insert the upper hinge shaft (3) into the hole on the corner of the freezer door (4). Make sure the hinge is level between the upper hinge hole (5) and the hole of the cabinet (6) and reattach the hinge screws (7) and ground screw (8) by turning in a clockwise direction.



2. Reconnect the wires.

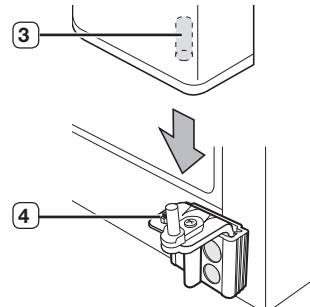


3. Place the front part of the upper hinge cover (9) on the front of the upper hinge (10) and reattach with the screw.

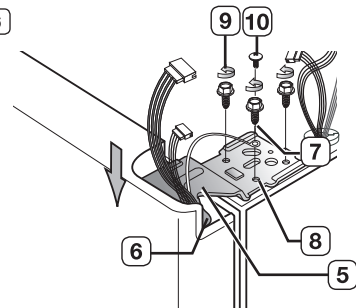


## Reattaching the Fridge Door

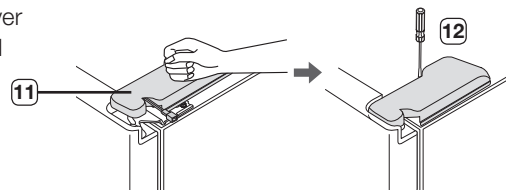
1. Fit the hole in the corner of the fridge door **3** over the lower hinge **4**.



2. Insert the upper hinge shaft **5** into the hole on the hinge **6**. Make sure the hinge is level between the upper hinge hole **7** and the hole on the top of the cabinet **8**. Then, reattach hinge screws **9** and the ground screw **10** by turning it in a clock wise direction.



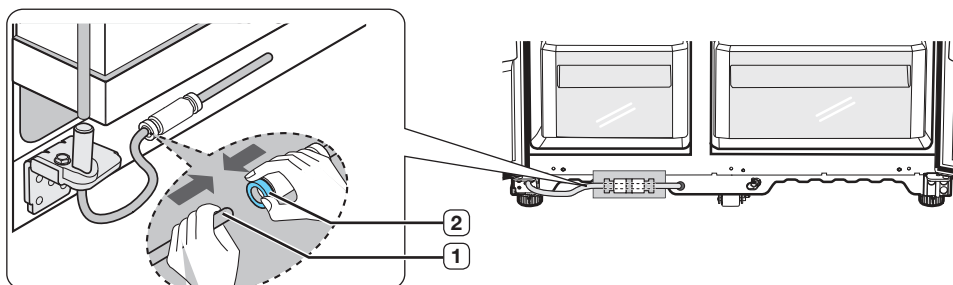
3. Place the front part of the upper hinge cover **11** on the front of the upper hinge **12** and reattach it with the screw.



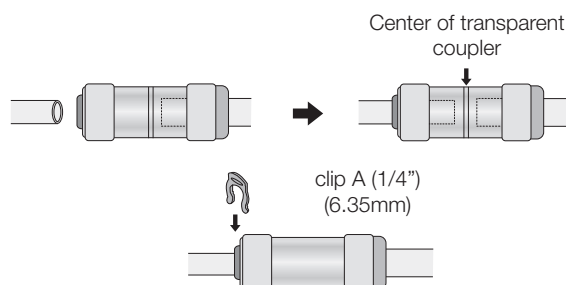
# setting up your side-by-side refrigerator

## Reattaching the Water Supply Line


1. Insert the water line **1** into the coupler **2**.

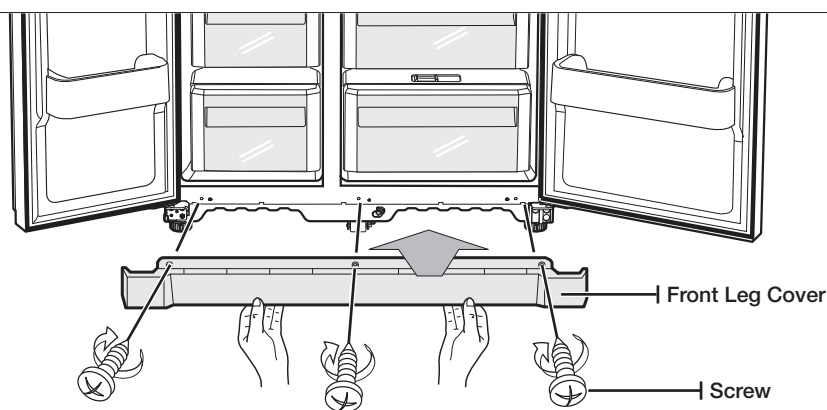


2. The Water Line must be fully inserted to the center of transparent coupler to prevent water leakage from the dispenser.
3. Insert the clip in the install pack and check that it holds the line firmly.



## Reattaching the Front Leg Cover

-  Before attaching the cover, check water connector for leakage.  
Replace the front leg cover by turning the three screws clockwise, as shown in the figure.



## LEVELING THE REFRIGERATOR

---

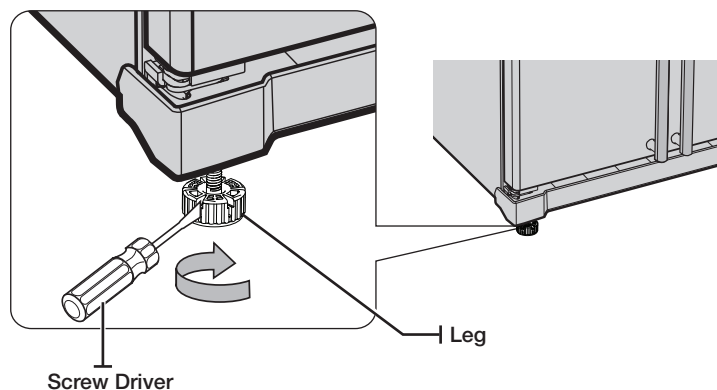
Now that the doors are back on the refrigerator, you will want to make sure the refrigerator is level so you can then make final adjustments. If the refrigerator is not level, it will not be possible to get the doors perfectly even.

 The front of the refrigerator is also adjustable.

### When the Freezer door is lower than the fridge

Insert a flat-blade screwdriver into a notch on the Leg, turn it clockwise or counter clockwise to level the freezer.

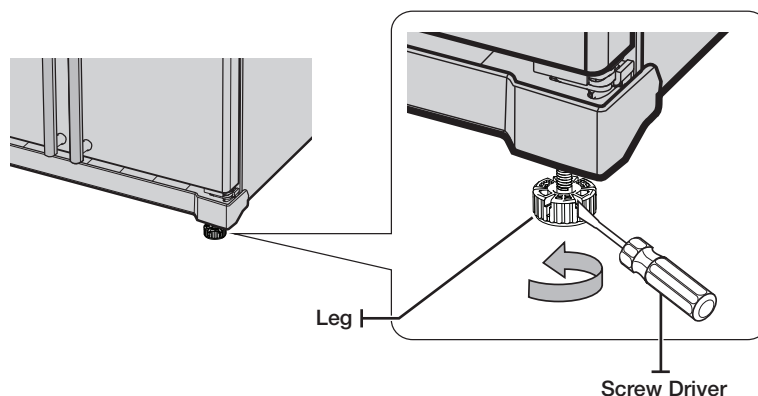
---




### When the Freezer door is higher than the fridge

Insert a flat-blade screwdriver into a notch on the Leg, turn it clockwise or counter clockwise to level the fridge.

---



 Refer to the next section for the best way to make very minor adjustments to the doors.

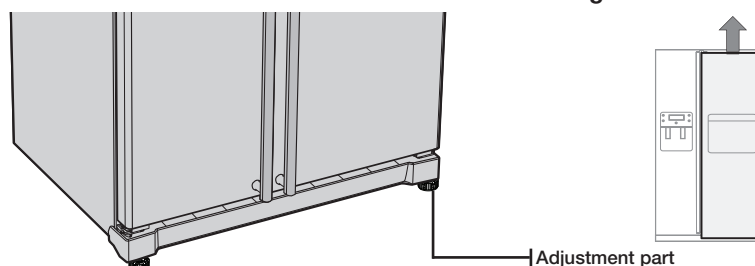
Caution: The legs of product are unconnected when it is out of factory. Make sure to adjust the legs to touch the floor, and make the product level before using.

# setting up your side-by-side refrigerator

## MAKING MINOR ADJUSTMENTS TO THE DOORS

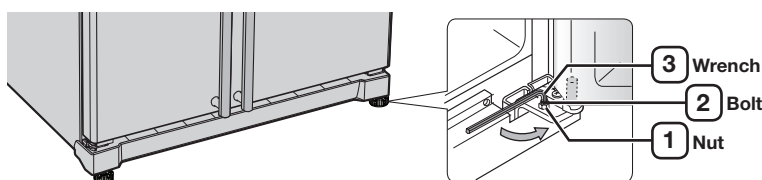
Remember, a leveling refrigerator is necessary for getting the doors perfectly even. If you need help, review the previous section on leveling the refrigerator.


**When the door of the freezer is higher than the fridge**





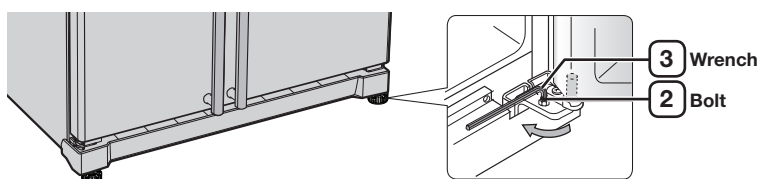
In the case of the process to correct the imbalance is the same. Open the doors and adjust them, one at a time, as follows:

1. Unscrew the nut **1** from the lower hinge until it reaches the upper end of the bolt **2**.



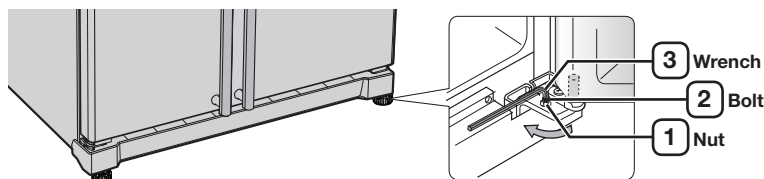
-  When you release the nut **1**, make sure that you use the Allen wrench (4mm) **3** to loosen the bolt **2** in a counter-clockwise direction. You should then be able to unscrew the nut **1** with your fingers.


2. Adjust the height difference between the doors by turning the bolt **2** clockwise  or counter clockwise .



-  When you turn clockwise , the door will move up.

3. After adjusting the doors, turn the nut **1** clockwise  until it reaches the lower end of the bolt, then tighten the bolt again with the wrench **3** to fix the nut in place **1**.



 If you do not secure the nut firmly, the bolt may release.


## CHECKING THE WATER DISPENSER LINE (OPTIONAL)

A water dispenser is just one of the helpful features on your new Samsung refrigerator. To help promote better health, the Samsung water filter removes unwanted particles from your water. However, it does not sterilize or destroy microorganisms. You will need to purchase a water purifying system to do that.

In order for the icemaker to operate properly, water pressure of 138 ~862 Kpa is required. Under normal conditions, a 170 cc paper cup can be filled in 10 seconds.

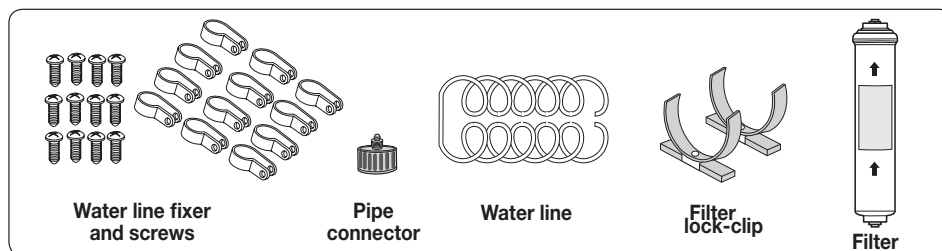
If the refrigerator is installed in an area with low water pressure (below 138 Kpa), you can install a booster pump to compensate for the low pressure.

Make sure the water storage tank inside the refrigerator is properly filled. To do this, press the water dispenser lever until the water runs from the water outlet.

 Water Line installation Kits are included with unit. You can find it in freezer drawer.

## INSTALLING THE WATER DISPENSER LINE

### Parts for water line Installation



### Connecting to the water supply line

**Connect the water pipe with coupler and tap.**

1. Close the main water tap.
2. Connect coupler "A" to the tap. **Note:**

#### WARRANTY INFORMATION

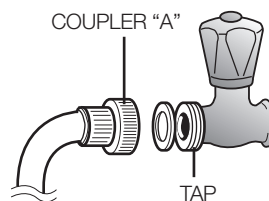
This water line installation is not covered by the refrigerator or ice maker manufacturer's warranty. Follow these instructions carefully to minimise the risk of expensive water damage.

#### Note:

If the coupler does not fit on the current tap, go the nearest authorised service dealer and purchase the right couplers fittings.

#### CAUTION

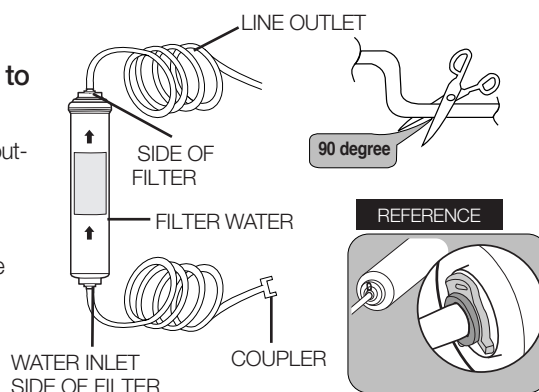
The water line must be connected to the cold water pipe. If it is connected to the hot water pipe, it may cause the filter to malfunction.



# setting up your side-by-side refrigerator

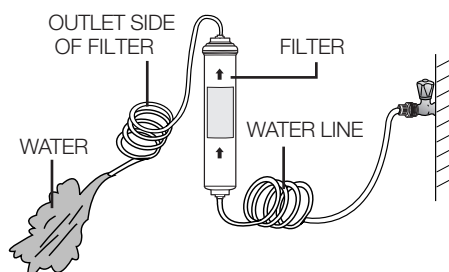
## Select the location where the filter is to install. (Model with the filter)

- If you wish to reassemble the water inlet and outlet sides of the filter during filter installation, see the reference illustration.
- Cut the water line attached to the filter to the appropriate place after measuring the distance between the filter and the cold water tap.



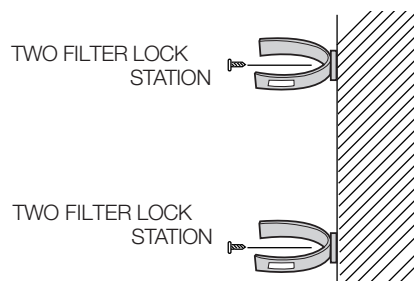
## Remove any residual matter inside the filter. (Model with the filter)

- Open the main water tap to check whether water is running through the water tube on the water inlet side of the filter.
- If water does not come out through the line, check whether the tap is open.
- Leave the tap open until clean water is running out and any residual matter that built up during manufacturing has been removed.



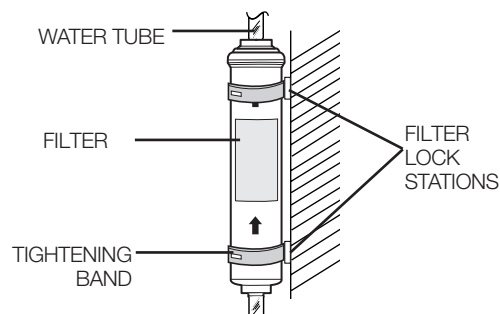
## Attach the filter lock stations.

- Hold the filter lock stations in the appropriate position (under the sink for example) and fix it tightly into place where to screw.



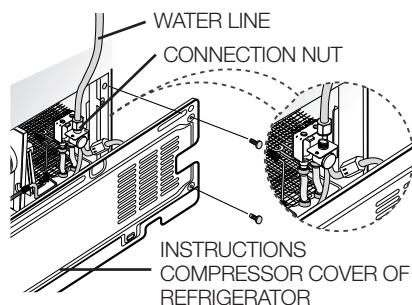
## Secure the filter in position.

- Fix the filter in position, as shown in the figure on the right.



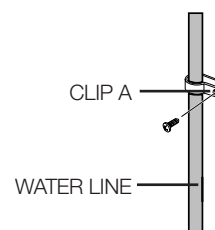
### Connect the water line to the refrigerator.

- Remove the compressor cover of the refrigerator.
- Connect the water line to the valve, as shown in the figure.
- When connected, check if there is any leakage. If any, repeat the connection.
- Reattach the compressor cover of the refrigerator.



### Secure the water line.

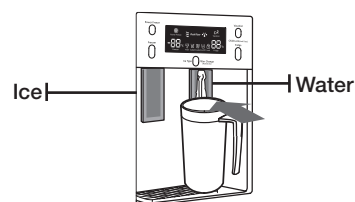
- Using clip "A", fix the water line to the wall (the back of refrigerator).
- When the water line is secure, make sure whether the water line is not excessively bent, pinched or squashed.




# setting up your side-by-side refrigerator

## Removing any residual matter inside the water supply line after installing filter.

1. Turn ON the main water supply & turn OFF the valve to the water supply line.
2. Run water through the dispenser until the water runs clear (approx. 1L). This will clean the water supply system and remove air from the lines.
3. Additional flushing may be required in some households.
4. Open the refrigerator door and make sure there are no water leaks coming from the water filter.

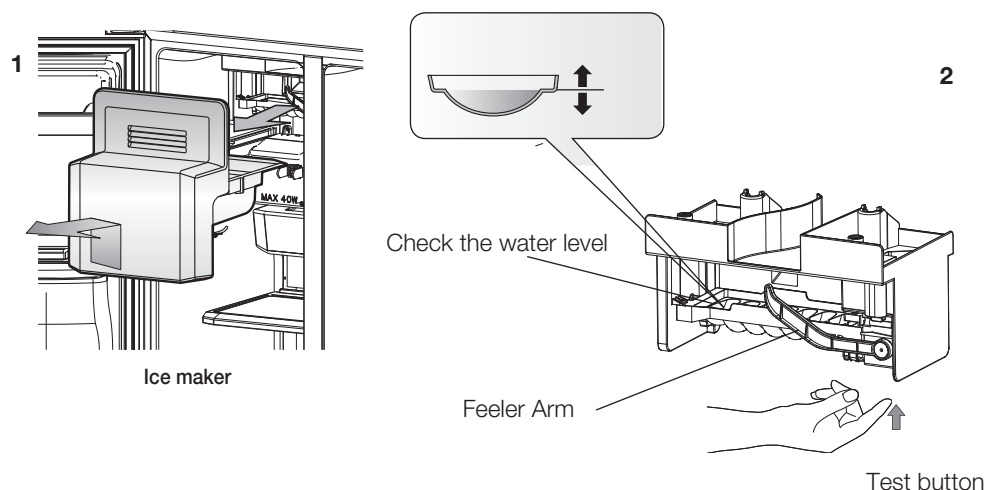


 A newly installed water filter cartridge may cause water to briefly spurt from the water dispenser. This is due to air getting into the line. It should pose no problem to operation.

## Check the amount of water supplied to the ice tray. (Optional)

1. Lift up the icemaker bucket and gently pull out of the freezer.
2. When you press the Test button for 1.5 seconds, the ice cube container is filled with water from the water supply tap after ice tray is twisted. Check to make sure the amount of water is correct(see the illustration below).

If the water level is too low, the ice cubes will be small. This is a water pressure problem from with in the main water pipes, not the refrigerator.



# operating the SAMSUNG side-by-side refrigerator

## SETTING UP THE REFRIGERATOR

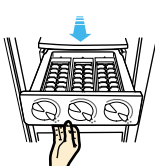
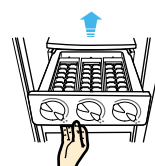
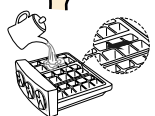

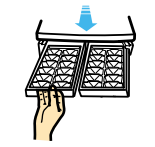
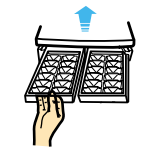

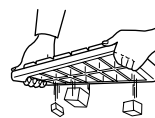
Now that you have your new refrigerator installed and in place, you are ready to set up and enjoy the full features and functions of the appliance.

By completing the following steps, your refrigerator should be fully operational. If not, first check the power supply and electricity source or try the troubleshooting section at the back of this user guide. If you have any further questions, contact your Samsung Electronics service center.

1. Place the refrigerator in an appropriate location with reasonable clearance between the wall and the refrigerator. Refer to installation instructions in this manual.
2. Once the refrigerator is plugged in, make sure the interior light comes on when you open the doors.
3. Set the temperature control to the coldest temperature and wait for an hour. The freezer should get slightly chilled and the motor should run smoothly.
4. After powering the refrigerator, it will take a few hours to reach the appropriate temperature. Once the refrigerator temperature is sufficiently cool, you can store food and drink in the refrigerator.

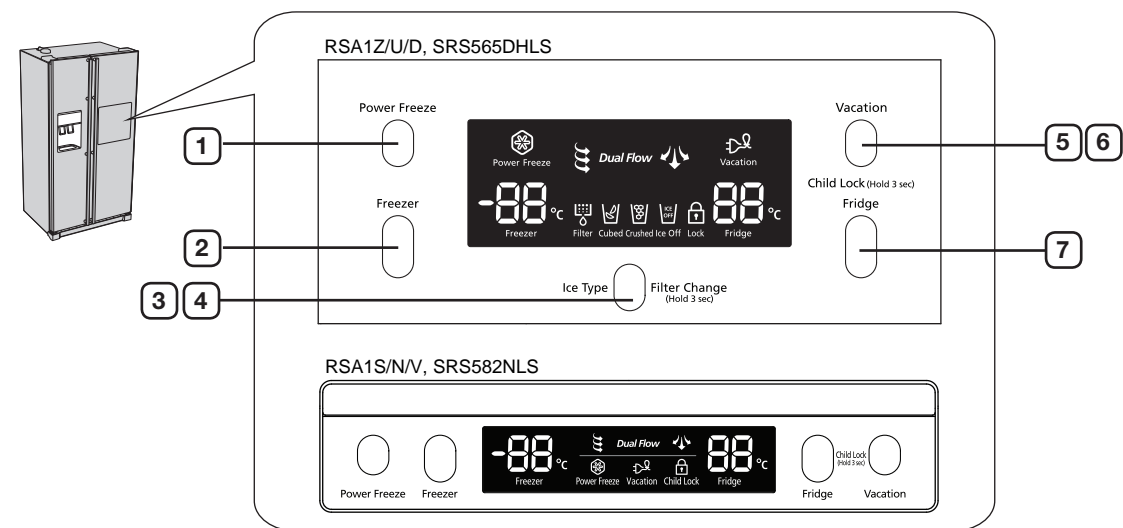
## USE ICE TRAY(OPTIONAL)(RSA1Z,RSA1S,RSA1U,RSA1D,RSA1N,RSA1V,SRS582NLS, SRS565DHLS)

When the freeze temperature get zero degre below, you can use Ice Box to make ice.

<b>1</b>	Pull out the ice tray.		<b>3</b>	Place it inside ice tray.	
<b>2</b>	Pour cool water into the tray until it reaches the water level indicator on the tray.		<b>4</b>	Turn ice tray button and the ice automatically full into the below ice compartment after release. Pull out ice storage compartment for ice.	
<b>1</b>	Pull out the ice tray.		<b>3</b>	Place it under the freezer shelf or on the freezer shelf.	
<b>2</b>	Pour water into the tray until it reaches the water level indicator on the tray.		<b>4</b>	To separate individual ice cubes, pull out the ice tray and hold the ice tray by its ends, then twist it gently.	

# OPERATING THE REFRIGERATOR

## Using the Control Panel



When not in use the temperature, Dual Flow and Filter (green) display will turn off, and press the key or door open will turn on again, this is normal.

1	POWER FREEZE BUTTON	Speeds up the time needed to freeze products in the freezer. This can be helpful if you need to quickly freeze items that spoil easily or if the temperature in the freezer has warmed dramatically (For example, if the door was left open).
2	FREEZER BUTTON	Press the <b>Freezer</b> button to set the freezer to your desired temperature, You can set the temperature between -14°C (8°F) and -25°C (-14°F).
3	ICE TYPE BUTTON	Use this button to choose Cubed, Crushed or to turn the Ice feature off.
4	FILTER CHANGE BUTTON	When you change the filter, press this button for 3 seconds to reset the filter schedule.
5	VACATION BUTTON	If you are going on vacation or business trip or you do not need to use the refrigerator, press the Vacation button. When you select vacation button for fridge compartment off, display LED of Vacation will be on. It is strongly requested to remove foods in the fresh-food compartment and do not leave the door open when you select Vacation function.
6	CHILD LOCK FUNCTION	By pressing the Vacation button and the Fridge button simultaneously for 3 seconds, all buttons will be locked. The Water dispenser lever and the Ice lever will not work either. To cancel this function, Press these two buttons for 3 seconds again.
7	FRIDGE BUTTON	Press the <b>Fridge</b> button to set the fridge to your desired temperature. You can set temperature between 1°C and 7°C (34°F and 45°F).

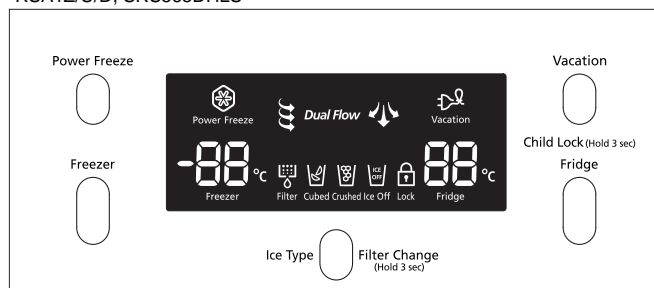
# operating the SAMSUNG side-by-side refrigerator

## USING THE DIGITAL DISPLAY

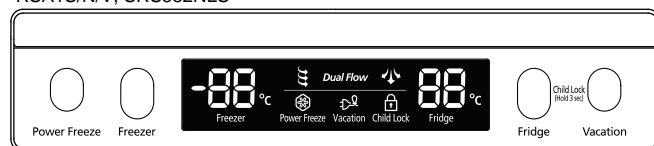
“88” segment on Freezer part indicates the current Freezer temperature.

“88” segment on Fridge part indicates the current Fridge temperature.

RSA1Z/U/D, SRS565DHLS



RSA1S/N/V, SRS582NLS



### Power Freeze

This icon will light up when you activate the “**Power Freeze**” feature. “**Power Freeze**” is great for times when you need a lot of ice. Press the **Power Freeze** button and ice production will increase. When you have enough, just press the button again to cancel the “**Power Freeze**” mode.



When you use this function, the energy consumption of the refrigerator will increase. This function must be activated before putting large amount of food stuff in the freezer compartment at least 24 hours before.

## Filter Indicator

When the filter indicator light is on, it is time to change the filter. Typically this happens about every 6 months.

After removing the old water filter and installing a new one (see page 26 for instructions on how to do this), reset the indicator status light by pressing the **Ice Type** button for about 3 seconds. The indicator will light again in about 6 months to let you know it is time to change your water filter.

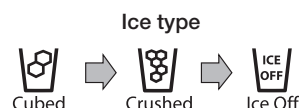
When you do not use the water filter, press the Ice Type button for more than 5 seconds, the Filter indicator lamp and the Filter Change letters will be off.

## Child Lock

This icon will light up when you activate the Child Lock function by pressing the Vacation button and the Fridge button simultaneously for 3 seconds. Press these two buttons for 3 seconds again to reactivate.

## Cubed Ice, Crushed Ice and turning the Ice maker off.

Enjoy cubed or crushed ice by selecting your preference from the digital control panel. If you don't need ice, turn the feature off to save on water and energy consumption. The Ice type light indicates the type of ice (or no ice) that is currently chosen.



# CONTROLLING THE TEMPERATURE

## Controlling the Freezer temperature

The freezer temperature can be set between -14°C (8°F) and -25°C (-14°F) to suit your particular needs. Press the **Freezer** button repeatedly until the desired temperature is shown in the temperature display. Keep in mind that foods like ice cream may melt at -16°C (4°F).

The temperature display will move sequentially from -14°C (8°F) and -25°C (-14°F). When the display reaches -14°C (8°F), it will begin again at -25°C (-14°F).

Five seconds after the new temperature is set the display will again show the actual current freezer temperature. However, this number will change as the Freezer adjusts to the new temperature.

The top and bottom guards in the freezer of this model are the two star sections, so the temperature in two star sections are slightly higher than other freezer compartment.

## Controlling the Fridge temperature

The refrigerator temperature can be set between 7°C (45°F) and 1°C (34°F) to suit your particular needs. Press the **Fridge** button repeatedly until the desired temperature is shown in the temperature display.

The temperature control process for the Fridge works just like the Freezer process.

Press the **Fridge** button to set your desired temperature. After a few seconds, the Fridge will begin tracking towards the newly set temperature. This will be reflected in the digital display.



The temperature of the freezer or the refrigerator may rise from opening the doors too frequently, or if a large amount of warm or hot food is placed in either side.

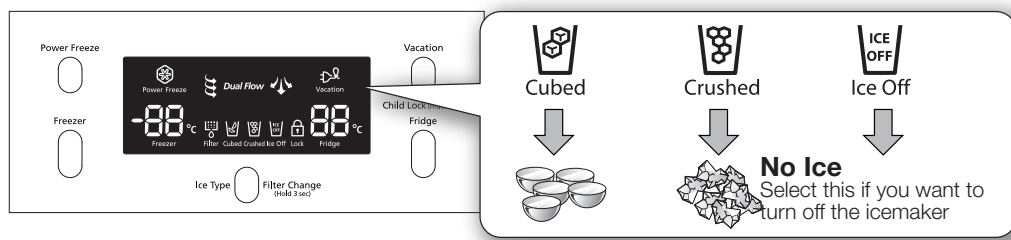
This may cause the digital display to blink. Once the freezer and refrigerator return to their normal set temperatures the blinking will stop.

If the blinking continues, you may need to “reset” the refrigerator. Try unplugging the appliance, wait about 10 minutes and then plug back in.

# operating the SAMSUNG side-by-side refrigerator

## USING THE ICE AND COLD WATER DISPENSER

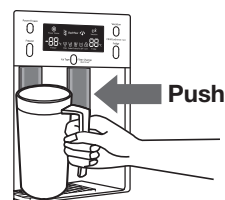
Press the **Ice Type** button to select the type of ice you want



 Ice is made in cubes. When you select “Crushed”, the icemaker grinds the ice cubes into crushed ice.

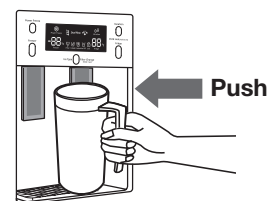
### Dispensing ice

Place your glass underneath the ice outlet and push gently against the ice dispenser lever with your glass. Make sure the glass is in line with the dispenser to prevent the ice from bouncing out.



### Using the Water Dispenser

Place a glass underneath the water outlet and push gently against the water dispenser lever with your glass. Make sure the glass is in line with the dispenser to prevent the water from splashing out.



**WARNING**

- Do not put your fingers, hands or any other unsuitable objects in the chute or ice-maker bucket.
  - It may result in personal injury or material damage.
- Never put finger or any other objects in the dispenser opening.
  - It may cause injury.
- Use only the ice maker provided with the refrigerator.
- The water supply to this refrigerator must only be installed/connected by a suitably qualified person and connect to a potable water supply only.
- In order to operate the ice maker properly, water pressure of 138 ~ 862 Kpa is required.

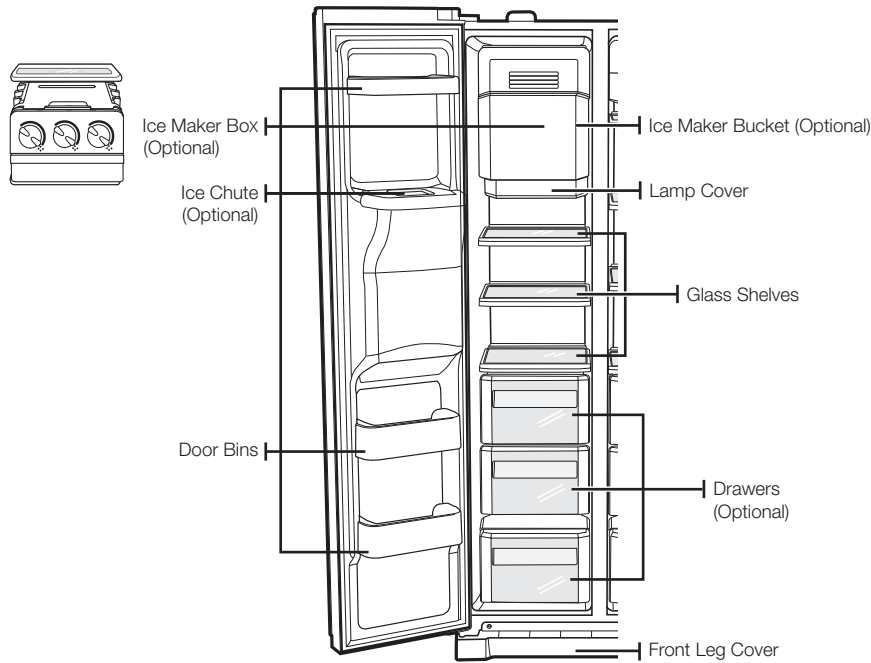


**CAUTION**

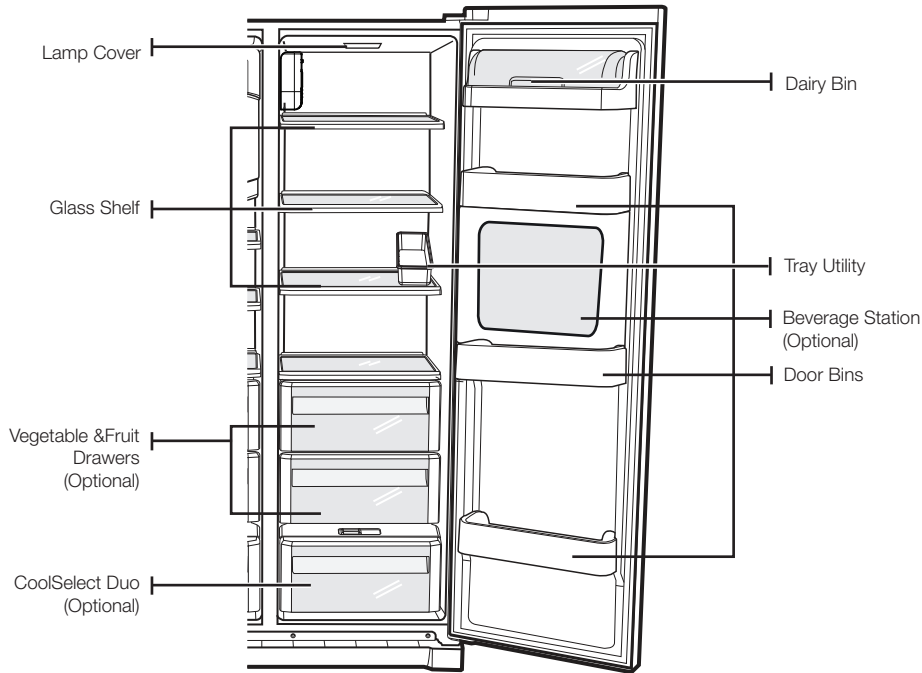
- If you have a long vacation or business trip and won't use water or ice dispensers, close the water valve.
  - Otherwise, water leakage may occur.
- Wipe excess moisture from the inside and leave the doors open.
  - Otherwise, odor and mold may develop.

# SHELVES AND BINS

## Freezer



## Fridge



# operating the SAMSUNG side-by-side refrigerator

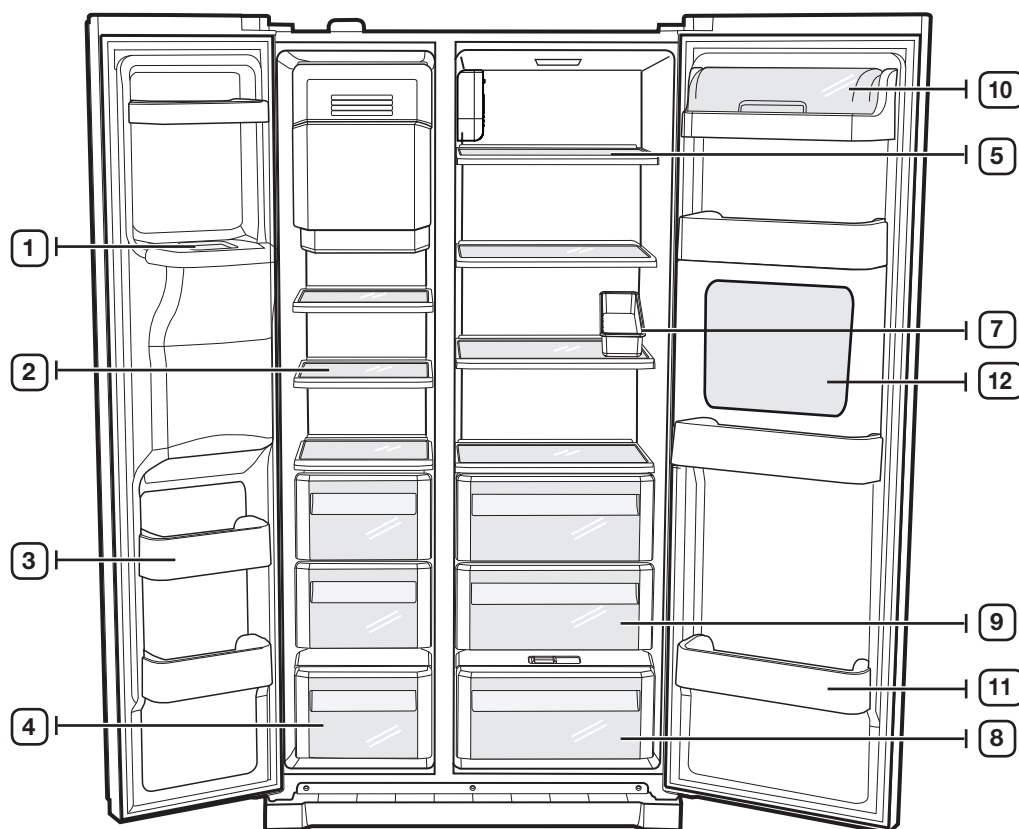
## STORING FOOD

### Storing Food in the Freezer





The Samsung Side-By-Side Refrigerator has been designed to provide you with maximum spacesaving features and functions. Here are some of the customized compartments we have created to keep your food fresher, longer. Remember, in order to prevent odor penetration to the ice, stored food should be wrapped securely and as airtight as possible.






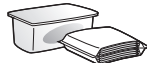


To get more space, you can remove freezer drawer(s) except bottom freezer drawer and ice trays (For RSA1S\*\*\*, SRS582NLS, RSA1N\*\*\*, RSA1V\*\*\* and RSA1W\*\*\* models) since it does not affect thermal and mechanical characteristics. A declared storage volume of frozen food storage compartment is calculated with these components removed.




## Storing Food in the Freezer

<b>1 ICE CHUTE</b>  <b>WARNING</b>	Do not put your fingers, hands or any other objects in the ice chute or the ice maker bucket. This may result in personal injury or material damage.	
<b>2 SHELVES</b>	Can be used to store all types of frozen food.	
<b>3 DOOR BINS</b>	Can be used for small packages of frozen food.	
<b>4 DRAWERS</b>	Best used to store meats or dry foods. Stored food should be wrapped securely using foil or other suitable wrapping materials or containers.	

## Storing Food in the Fridge

<b>5 SHELVES</b>	Designed to be crack-resistant. They can be used to store all types of food and drinks. Circular marks on the glass surface are a normal phenomenon and can usually be wiped clean with a damp cloth.	
<b>7 TRAY UTILITY</b>	Best place to keep eggs. Place the TRAY UTILITY on the shelf for easy access.	
<b>8 COOLSELECT DUO (OPTIONAL)</b>	Helps to preserve the taste, and prolong the freshness of your food. Use it to store meat, vegetable, poultry, fish or any other foods that are consumed on a regular basis.	
<b>9 FRUIT &amp; VEGETABLE DRAWER</b>	Used to preserve the freshness of your stored vegetables and fruits. It has been specifically designed to control the level of humidity within the drawer.	
<b>10 DAIRY BIN</b>	Can be used to store smaller dairy items like butter or margarine, yogurt or cream-cheese bricks.	
<b>11 DOOR BINS</b>	Designed to handle large, bulky items such as gallons of milk or other large bottles and containers.	
<b>12 BEVERAGE STATION (OPTIONAL)</b>	Can be used to store the frequently used items, such as canned beverages and snacks and allows access to these items without opening the refrigerator door.	

 Bottles should be stored tightly together so that they do not tip and fall out when the refrigerator door is opened.



- If you plan to go away for a significant time, empty the refrigerator and turn it off. Wipe the excess moisture from the inside of the appliance and leave the doors open. This helps keep odor and mold from developing.
- If the refrigerator is not to be used for a long period of time, pull out the power plug.
  - Deterioration in the insulation may cause fire.

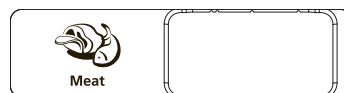
# operating the SAMSUNG side-by-side refrigerator

## USING THE CoolSelect Duo (OPTIONAL)

The CoolSelect Duo is designed to make your busy life just a little bit easier.

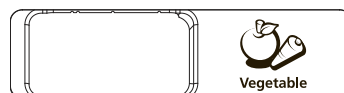
### Meat


When **MEAT** is selected, the temperature of the CoolSelect Duo is suitable for storing meat or ham by entering chill or freezer to it. This feature also helps keep meat or ham fresh for longer.



### Vegetable

When **VEGETABLE** is selected, the temperature of CoolSelect Duo is suitable for storing vegetable or fruit by closing chill or freezer to it. This feature also helps keep vegetable or fruit fresh for longer.



 When "**MEAT or VEGETABLE**" is in operation, any items that you do NOT want affected should be moved out of the drawer.

## REMOVING THE FREEZER ACCESSORIES

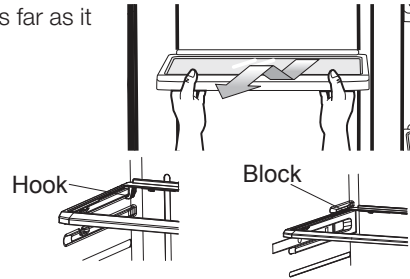
Cleaning and rearranging the interior of the freezer is a snap.

1. Remove the **Glass Shelf** by pulling the shelf out as far as it will go. Then, gently lift it up and remove it.

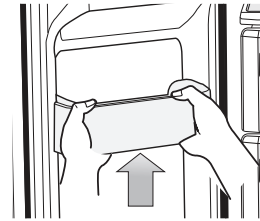


CAUTION

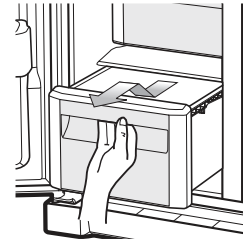
In case it does not have hooks itself in the back side for not being tilted, a shelf should be placed deeply in a proper position where there are blocks for shelves as shown. If not, the shelf can fall out of a refrigerator.



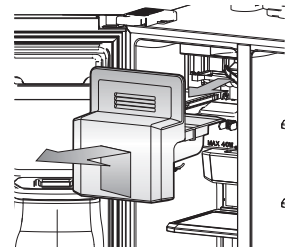
2. Remove the **Door Bin** by holding the door bin with both hands and then gently lift it up.



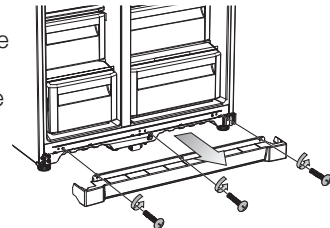
3. Remove the **Plastic Drawer** by pulling it out and slightly lifting it up.



4. Remove the **Icemaker Bucket** by lifting up and pulling it out.



5. Remove the **Front Leg Cover** by opening both the freezer and refrigerator doors, and removing the three screws. Once the screws are free, detach the cover. To reattach the front leg cover, place it back in its original position and tighten the three screws.

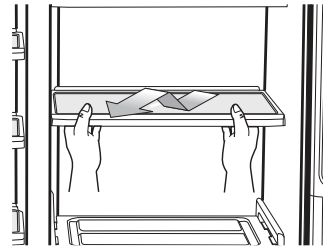


Do not use excessive force when removing the cover. Otherwise, the cover may break and cause injury.

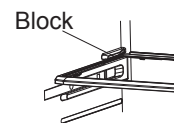
# side-by-side refrigerator

## REMOVING THE FRIDGE ACCESSORIES

1. Remove the **Glass Shelf** by pulling the shelf out as far as it will go. Then, gently lift it up and gently remove it.



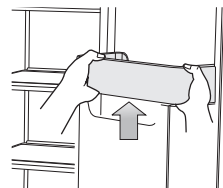
In case it does not have hooks itself in the back side for not being tilted, a shelf should be placed deeply in a proper position where there are blocks for shelves as shown. if not, the shelf can fall out of a refrigerator.



2. Remove the **Vegetable & Fruit Drawer** by pressing on the indentations found on the inside left and right sides of the Veggie Box/Dry Box cover and remove by pulling forward. Holding the drawer with one hand, lift it up a little bit while pulling it forward and take it out of the refrigerator.



3. Remove the **Gallon Door Bin** by holding the bin with both hands and gently lifting it up.



Before removing any accessories, make sure that no food is in the way. When possible, remove the food altogether to reduce the risk of accidents.

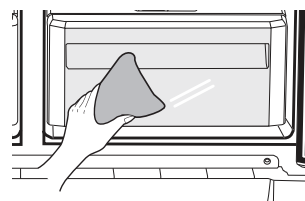
# operating the SAMSUNG side-by-side refrigerator

## CLEANING THE REFRIGERATOR

Caring for your Samsung Side-By-Side Refrigerator prolongs the life of your appliance and helps keep it odor and germ-free.

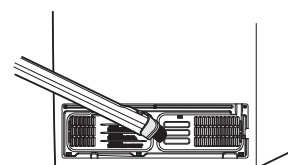
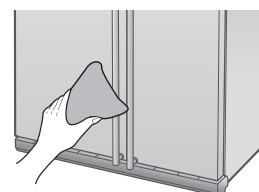
### Cleaning the Interior

Clean the inside walls and accessories with a mild detergent and then wipe dry with a soft cloth. You can remove the drawers and shelves for a more thorough cleaning. Just make sure to dry them before putting them back into place.



### Cleaning the Exterior

Wipe the digital panel and display panel with a clean, soft cloth. Spray water onto the cleaning cloth instead of spraying directly on the surface of the refrigerator. This helps ensure an even distribution of moisture to the surface. The doors, handles and cabinet surfaces should be cleaned with a mild detergent and then wiped dry with a soft cloth. To keep your appliance looking its best, the exterior should be polished once or twice a year.

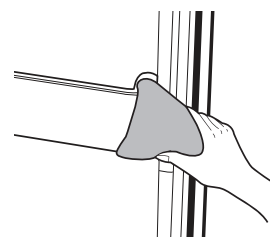


Do not use Benzene, Thinner or Clorox™ for cleaning.

**WARNING** They may damage the surface of the appliance and can create a risk of fire.

### Cleaning the Rubber door seals

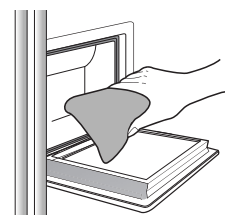
If the rubber door seals are dirty the doors may not close properly, and the refrigerator will not operate efficiently. Keep the door seals free of grit or grime by cleaning the doors with a mild detergent and damp cloth. Wipe dry with a clean, soft cloth.



**CAUTION** Do not spray the refrigerator with water while it is plugged in, as it may cause an electric shock. Do not clean the refrigerator with benzene, thinner or car detergent for risk of fire.

### Cleaning the Home Bar

Use a damp cloth to clean the ice and water dispenser. Then wipe dry with a clean, soft cloth.



# operating the SAMSUNG side-by-side refrigerator

---

## CHANGING THE INTERIOR LIGHTS

---



Do not replace LED lamp privately and please contact the specialized repair staff if necessary.

And make it sure that the new LED lamp is the same as the old one.

Do not break the lamp cover .

## USING THE DOORS

---

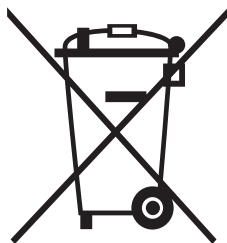
The refrigerator doors are equipped with a door opening and closing feature that ensures that the doors close all the way and are securely sealed.

After opening beyond a certain point, the door will “catch” and remain open. When the door is ajar ahead of the catch that allows it to stay open, it will close automatically.

# troubleshooting

PROBLEM	SOLUTION
The refrigerator does not work at all or it does not chill sufficiently.	<ul style="list-style-type: none"> <li>• Check that the power plug is properly connected.</li> <li>• Is the temperature control on the display panel set to the correct temperature? Try setting it to a lower temperature.</li> <li>• Is the refrigerator in direct sunlight or located too near a heat source?</li> <li>• Is the back of the refrigerator too close to the wall and therefore keeping air from circulating?</li> </ul>
The food in the fridge is frozen.	<ul style="list-style-type: none"> <li>• Is the temperature control on the display panel set to the correct temperature? Try setting it to a warmer temperature.</li> <li>• Is the temperature in the room very low?</li> <li>• Did you store the food with a high water content in the coldest part of the fridge? Try moving those items into the body of the fridge instead of keeping them in the CoolSelect Duo™ drawer.</li> </ul>
You hear unusual noises or sounds.	<ul style="list-style-type: none"> <li>• Check that the refrigerator is level and stable.</li> <li>• Is the back of the refrigerator too close to the wall and therefore keeping air from circulating?</li> <li>• Was anything dropped behind or under the refrigerator?</li> <li>• A “ticking” sound is heard from inside the refrigerator. This is normal and occurs because various accessories are contracting or expanding in relation to the temperature of the refrigerator interior.</li> </ul>
The front corners and sides of the appliance are hot and condensation is occurring.	<ul style="list-style-type: none"> <li>• Some heat is normal as anti-condensators are installed in the front corners of the refrigerator to prevent condensation.</li> <li>• Is the refrigerator door ajar? Condensation can occur when you leave the door open for a long time.</li> </ul>
Ice is not dispensing.	<ul style="list-style-type: none"> <li>• Did you wait for 12 hours after installation of the water supply line before making ice?</li> <li>• Is the water line connected and the shut-off valve open?</li> <li>• Did you manually stop the ice making function? Make sure Ice Type is set to Cubed or Crushed.</li> <li>• Is there any ice blocked within the ice storage unit?</li> <li>• Is the freezer temperature too warm? Try setting the freezer temperature lower.</li> </ul>
You can hear water bubbling in the refrigerator.	<ul style="list-style-type: none"> <li>• This is normal. The bubbling comes from the refrigerant coolant liquid circulating through the refrigerator.</li> </ul>
There is a bad smell in the refrigerator.	<ul style="list-style-type: none"> <li>• Has a food item spoiled?</li> <li>• Make sure that strong smelling food (for example, fish) is wrapped so that it is airtight.</li> <li>• Clean out your freezer periodically and throw away any spoiled or suspect food.</li> </ul>
Frost forms on the walls of the freezer.	<ul style="list-style-type: none"> <li>• Is the air vent blocked? Remove any obstructions so air can circulate freely.</li> <li>• Allow sufficient space between the foods stored for efficient air circulation.</li> <li>• Is the freezer door closed properly?</li> </ul>
Water dispenser is not functioning.	<ul style="list-style-type: none"> <li>• Is the water line connected and the shut-off valve open?</li> <li>• Has the water supply line tubing been crushed or kinked? Make sure the tubing is free and clear of any obstruction.</li> <li>• Is the water tank frozen because the refrigerator temperature is too low? Try selecting a warmer setting on the main display panel.</li> </ul>

## English



### **Correct Disposal of This Product** **(Waste Electrical & Electronic Equipment)** **(Applicable in countries with separate collection systems)**

This marking on the product, accessories or literature indicates that the product and its electronic accessories (e.g. charger, headset, USB cable) should not be disposed of with other household waste at the end of their working life. To prevent possible harm to the environment or human health from uncontrolled waste disposal, please separate these items from other types of waste and recycle them responsibly to promote the sustainable reuse of material resources.

Household users should contact either the retailer where they purchased this product, or their local government office, for details of where and how they can take these items for environmentally safe recycling.

Business users should contact their supplier and check the terms and conditions of the purchase contract. This product and its electronic accessories should not be mixed with other commercial wastes for disposal.

MEMO

---

MEMO

---

# SAMSUNG

## Contact SAMSUNG WORLD WIDE

If you have any questions or comments relating to Samsung products, please contact the SAMSUNG customer care center.

COUNTRY	CALL	Web site
AUSTRALIA	1300 362 603	<a href="http://www.samsung.com/au/support">www.samsung.com/au/support</a>
COLOMBIA	Bogotá en el 600 12 72 Sin costo en todo el país 01 8000 112 112 Y desde tu celular #726	<a href="http://www.samsung.com/co/support">www.samsung.com/co/support</a>
EIRE	0818 717100	<a href="http://www.samsung.com/ie/support">www.samsung.com/ie/support</a>
HONG KONG	3698 4698	<a href="http://www.samsung.com/hk/support">www.samsung.com/hk/support</a> (Chinese) <a href="http://www.samsung.com/hk_en/support">www.samsung.com/hk_en/support</a> (English)
INDIA	1800 3000 8282 - Toll Free 1800 266 8282 - Toll Free	<a href="http://www.samsung.com/in/support">www.samsung.com/in/support</a>
BANGLADESH	0961-2300300 0800-0300300 (Toll free)	<a href="http://www.samsung.com/in/support">www.samsung.com/in/support</a>
MALAYSIA	1800-88-9999 603-77137477 (Overseas contact)	<a href="http://www.samsung.com/my/support">www.samsung.com/my/support</a>
NEW ZEALAND	0800 726 786	<a href="http://www.samsung.com/nz/support">www.samsung.com/nz/support</a>
PANAMA	800-0101	<a href="http://www.samsung.com/latin/support">www.samsung.com/latin/support</a> (Spanish) <a href="http://www.samsung.com/latin_en/support">www.samsung.com/latin_en/support</a> (English)
PHILIPPINES	1-800-10-726-7864 [ PLDT Toll Free ] 1-800-8-726-7864 [ Globe Landline and Mobile ] 02- 422-2111 [ Standard Landline ]	<a href="http://www.samsung.com/ph/support">www.samsung.com/ph/support</a>
SINGAPORE	1800-SAMSUNG(726-7864)	<a href="http://www.samsung.com/sg/support">www.samsung.com/sg/support</a>
SOUTH AFRICA	0860 SAMSUNG (726 7864)	<a href="http://www.samsung.com/support">www.samsung.com/support</a>
UK	0330 SAMSUNG (7267864)	<a href="http://www.samsung.com/uk/support">www.samsung.com/uk/support</a>
VIETNAM	1800 588 889	<a href="http://www.samsung.com/vn/support">www.samsung.com/vn/support</a>