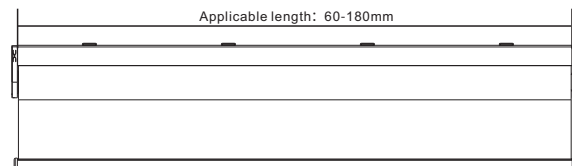


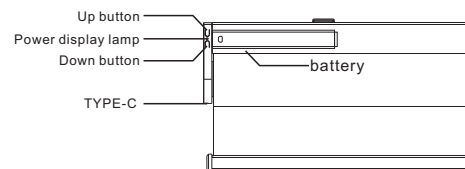
Product information

1.Product Size



Note: Motor length L subject to product specifications (unit: mm)

2.Product button function



1. Up button:

- ①. Infinite position state: press the motor without action; Long press the motor continuously up, let go and stop.
- ②. Finite position state: press the motor [button up] to open the curtain, then press the motor [Up button] to stop the curtain, and press the button to move and stop in turn until the limit.

2. Press the button:

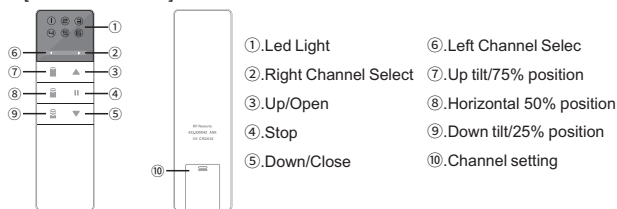
- ①. Infinite position state: press the motor without action; Long press the motor continuously downward, release the stop.
- ②. Finite position state: press the motor [down button] to close the curtain, and then press the motor [Down button] to stop the curtain, and press the button to move and stop in turn until the limit.

3. Battery strip: 7.4V/2200mAh, to power the motor.

4. Type-c charging port: 5V/1A battery charging port;
The blue light is on when the motor is charging.

3.Recommended control device

1.[YR2118B Remote]

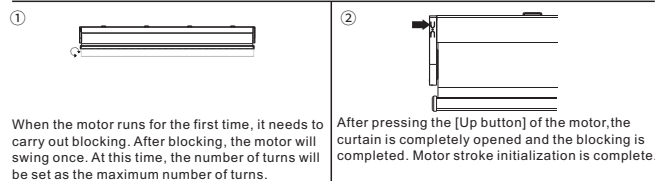


2.[Tuya APP]

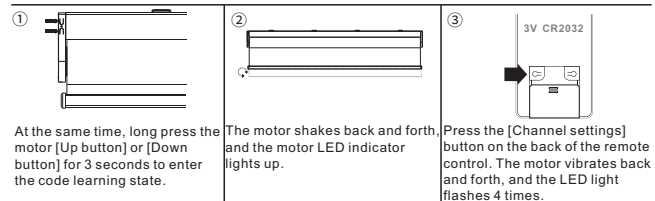


Basic remote setting

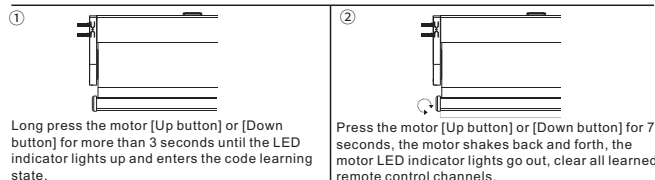
◆Blocked rotation (motor stroke initialization)



◆Setting remote Control Channel

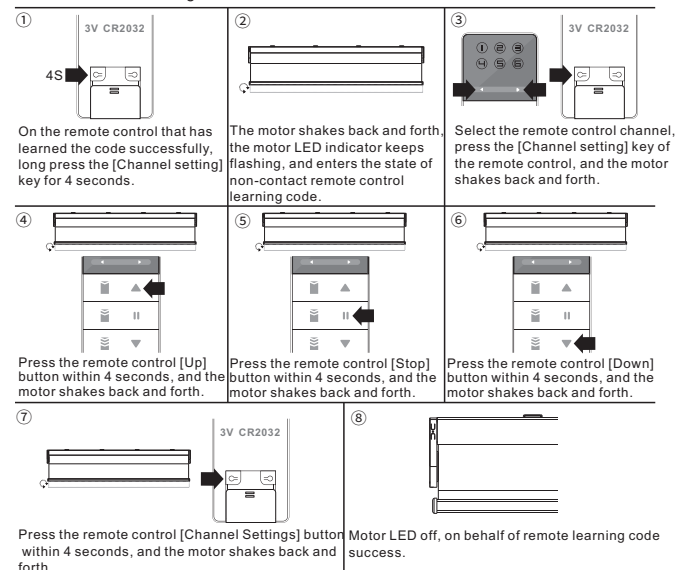


◆Remove remote control channel



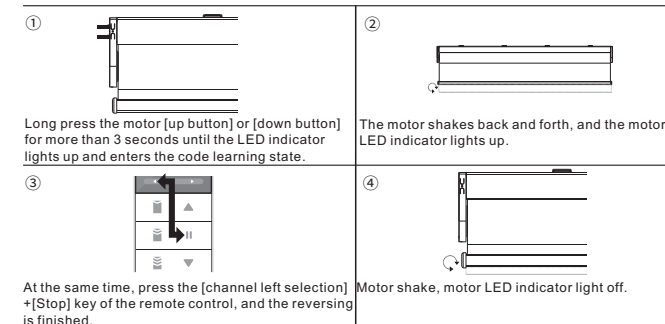
Note: all remote controls cannot control the motor at this time.

◆Non-contact learning code



Note: after entering the remote control code state, other remote controls cannot interfere with the remote control code.
If no corresponding operation is performed within the specified time, the switch jitter once to exit the remote control learning code state.

Change direction

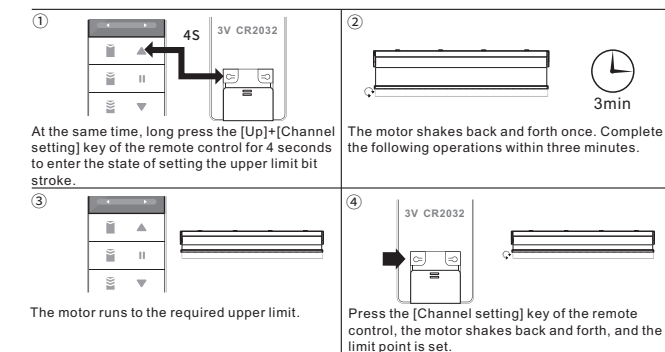


Limits setting

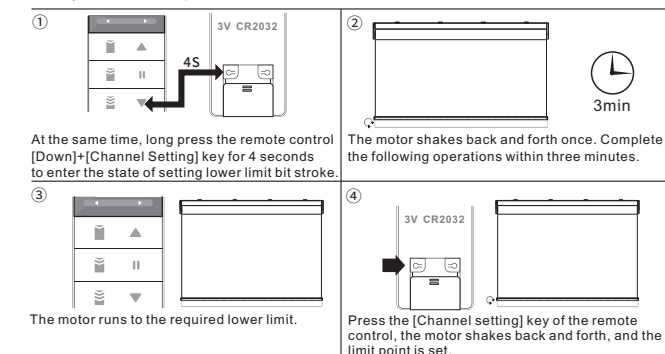
★Note:

1. Stroke setting must be carried out after the complete curtain system (including traction objects, blades, drapes, etc.) is installed.
2. Remote control is used for travel setting. Due to the inherent characteristics of radio remote control, all motors that can receive the remote control signal may receive the setting instruction during the setting process. Therefore, in order to avoid the misoperation of other curtains, please ensure that irrelevant curtains remain in the power off or invalid state.

◆Set upper limit

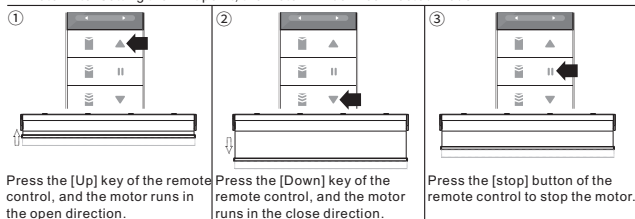


◆Adjust close limit position

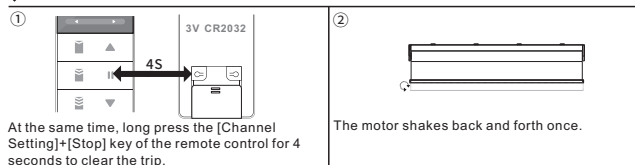


◆Connected remote control

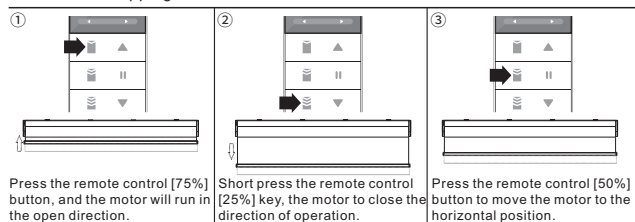
Note: After setting the limit point, the motor will be in connected mode



◆Delete limit



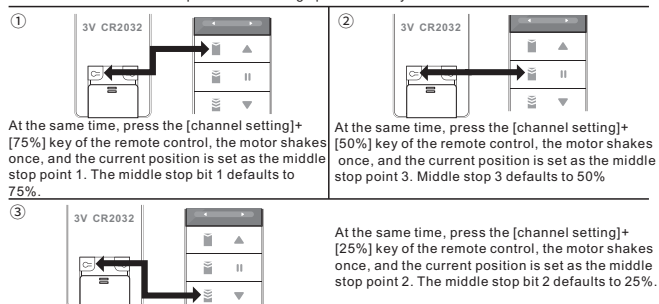
◆Motor fine stepping



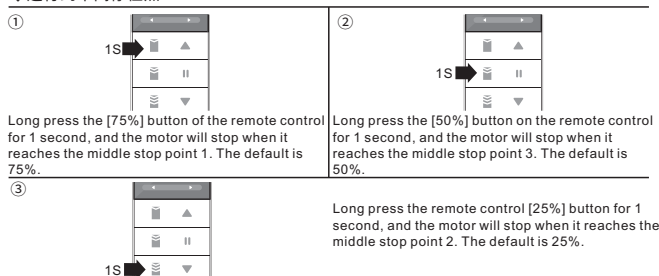
Intermediate stop setting

◆Set the intermediate stop point and 3 flush positions

Note: The motor can complete the following operations only when it has a stroke.

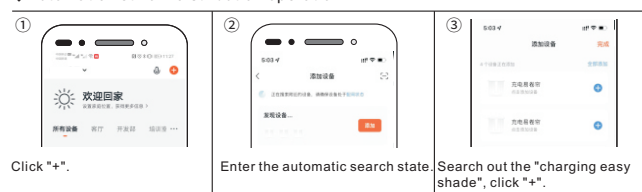


◆运行到中间停位点



APP control

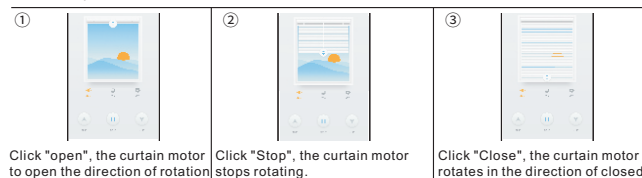
◆Automatic network distribution operation



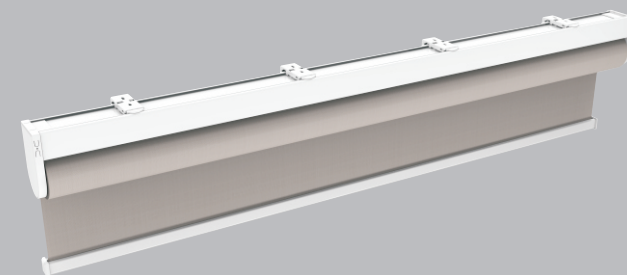
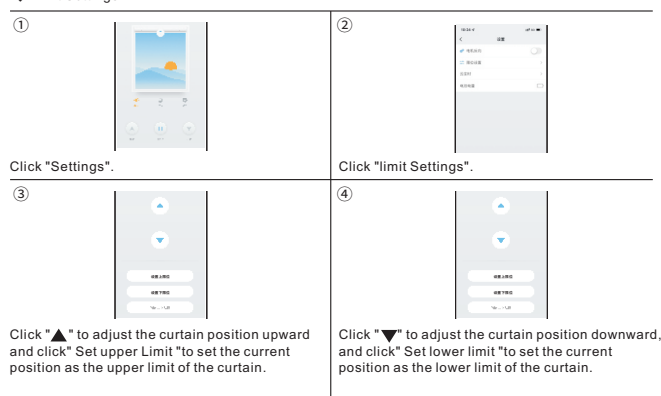
◆Manual distribution network operation



◆Basic operation



◆Limit Settings



Charging electric shutter system operating instructions

FCC Caution:

This device complies with part 15 of the FCC Rules. Operation is subject to the following two conditions: (1) This device may not cause harmful interference, and (2) this device must accept any interference received, including interference that may cause undesired operation.

Any Changes or modifications not expressly approved by the party responsible for compliance could void the user's authority to operate the equipment.

Note: This equipment has been tested and found to comply with the limits for a Class B digital device, pursuant to part 15 of the FCC Rules. These limits are designed to provide reasonable protection against harmful interference in a residential installation. This equipment generates uses and can radiate radio frequency energy and, if not installed and used in accordance with the instructions, may cause harmful interference to radio communications. However, there is no guarantee that interference will not occur in a particular installation. If this equipment does cause harmful interference to radio or television reception, which can be determined by turning the equipment off and on, the user is encouraged to try to correct the interference by one or more of the following measures:

- Reorient or relocate the receiving antenna.
- Increase the separation between the equipment and receiver.
- Connect the equipment into an outlet on a circuit different from that to which the receiver is connected.
- Consult the dealer or an experienced radio/TV technician for help.

The device has been evaluated to meet general RF exposure requirement. The device can be used in portable exposure condition without restriction.