

## English

## 1 APPEARANCE

1. Magnetic Stick 2. Positioning line 3. Indicator  
4. Tamper Button 5. Power Switch 6. External Inputs 7. Battery

## 2 INSTALLMENT

## 3 TEST

Check if the installation position is properly.  
Magnet Detection Performance Table

Axes of Operation	Event	Without Nominal Distance	With Nominal Distance 5mm
		Distance in Air	Distance in Air
X+	Remove	11	13
	Approach	15	17
X-	Remove	11	13
	Approach	15	19
Y	Remove	33	28
	Approach	28	23
Z+	Remove	43	42
	Approach	40	38
Z-	Remove	37	35
	Approach	32	30

## 4 INSTALLATION

- I. Check signal strength and align the positioning line.  
II. Install the detector.  
a. with screw b. with sponge tape (non EN compliant)  
★ (optional) route the cable through cable hole if external inputs required.

## User Manual

Scan the QR code for more information and operation help.

## Specification

Detection gap	According to the magnet detection performance table
External inputs	2
Tamper protection	Front & Back
LED indicator	Blue (alarm)
Operating temperature	-10 °C to 55 °C (14 °F to 131 °F) -10 °C to 40 °C (14 °F to 104 °F) Certified
Storage temperature	-20 °C to 60 °C (-4 °F to 140 °F)
Operating humidity	10% to 90%
Dimension (W × H × D)	Sensor: 22.5mm × 103mm × 23.2mm Magnetic Stick: 13mm × 34.4mm × 11.4mm
Weight	59g
Transmission frequency	433.10MHz
RF range	0.8km (open area)
Battery	CR123A × 1 (included)
Standard battery life	5 years
Low Voltage Level	2.45 V

©2021 Hangzhou Hikvision Digital Technology Co., Ltd. All rights reserved.

This manual includes instructions for use and maintenance. It contains important safety information and other information that you must read and understand before using the product. Please read this manual carefully and keep it for future reference.

THE INFORMATION CONTAINED HEREIN IS PROVIDED "AS IS" WITHOUT WARRANTY OF ANY KIND, INCLUDING WARRANTIES OF MERCHANTABILITY, FITNESS FOR A PARTICULAR PURPOSE, OR NON-INFRINGEMENT. THE USER ASSUMES ALL LIABILITY FOR ANY DAMAGE, LOSS, OR INJURY, INCLUDING BUT NOT LIMITED TO, DAMAGE TO PROPERTY, PERSONAL INJURY, OR LOSS OF DATA, ARISING FROM THE USE OF THE PRODUCT, WHETHER BASED ON BREACH OF CONTRACT, NEGLIGENCE, OR OTHERWISE. THE USER AGREES TO HOLD HIKVISION HARMLESS FROM AND AGAINST ALL SUCH DAMAGES, LOSSES, OR INJURIES.

PLEASE READ THIS MANUAL CAREFULLY AND UNDERSTAND THE CONTENTS BEFORE USING THE PRODUCT. THE USER AGREES TO HOLD HIKVISION HARMLESS FROM AND AGAINST ALL SUCH DAMAGES, LOSSES, OR INJURIES. THE USER AGREES TO HOLD HIKVISION HARMLESS FROM AND AGAINST ALL SUCH DAMAGES, LOSSES, OR INJURIES.

PLEASE READ THIS MANUAL CAREFULLY AND UNDERSTAND THE CONTENTS BEFORE USING THE PRODUCT. THE USER AGREES TO HOLD HIKVISION HARMLESS FROM AND AGAINST ALL SUCH DAMAGES, LOSSES, OR INJURIES. THE USER AGREES TO HOLD HIKVISION HARMLESS FROM AND AGAINST ALL SUCH DAMAGES, LOSSES, OR INJURIES.

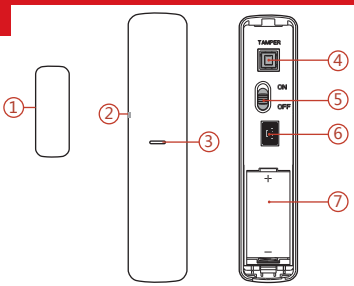
This product and, if applicable, the supplied accessories are marked with "CE" and comply therefore with the requirements of the European Union. The product is marked with the CE mark in the bottom right corner of the front panel. The CE mark is a declaration of conformity with the requirements of the European Union. The product is marked with the CE mark in the bottom right corner of the front panel. The CE mark is a declaration of conformity with the requirements of the European Union.

**BATTERY WARNING:**  
1. Do not ingest battery. Chemical Burn Hazard.  
2. Keep new and used batteries away from the children.  
3. If the battery compartment does not close securely, stop using the product and keep it away from children.  
4. Do not short circuit the battery.

**BATTERY CAUTION:**  
1. Risk of fire or explosion if the battery is replaced by an incorrect type.  
2. Dispose of used batteries properly. Do not dispose of the battery with other waste (for example, in the case of some lithium battery types).  
3. Do not dispose of the battery into fire or a hot oven, or mechanically crush or cut the battery, which may result in an explosion or the leakage of toxic and/or corrosive substances.  
4. Do not leave the battery in an extremely high temperature surrounding environment, which may result in an explosion or the leakage of toxic and/or corrosive substances.  
5. Do not dispose of the battery in a way that may cause environmental pollution, which may result in an explosion or the leakage of toxic and/or corrosive substances.  
6. Dispose of used batteries according to the instructions.

**INSTALLATION CAUTION:**  
The external force shall be equal to three times the weight of the equipment but not less than 50N. The equipment and its associated connecting means shall remain secure during the installation. After the installation, the equipment, including any associated connecting parts, shall not be damaged.

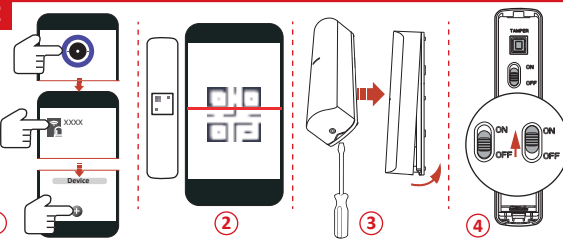
1



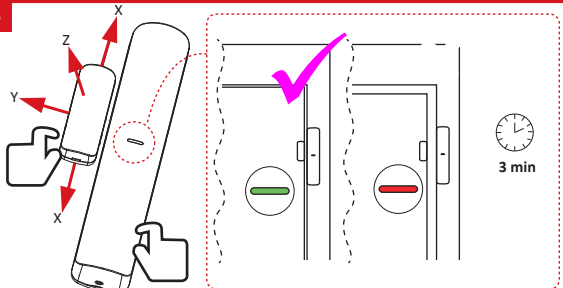
User Manual



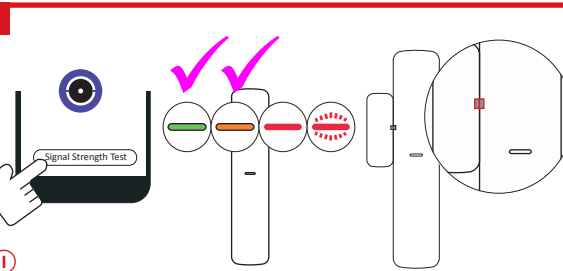
2



3

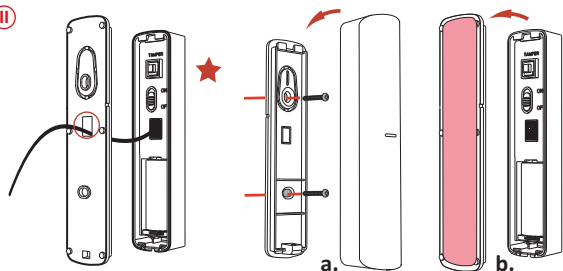


4



I

II



## Español

## 1 ASPECTO

1. Vara magnética 2. Línea de posicionamiento 3. Piloto  
4. Botón de manipulación 5. Interruptor de alimentación 6. Entradas externas 7. Batería

## 2 REGISTRO

## 3 PRUEBA

Compruebe que la posición de instalación sea la adecuada.

Tabla de rendimiento de detección de imanes

Ejes de operación	Evento	Sin distancia nominal	Con distancia nominal de 5 mm
		Distancia en el aire	Distancia en el aire
X+	Extraer	11	13
	Acercar	15	17
X-	Extraer	11	13
	Acercar	15	19
Y	Extraer	33	28
	Acercar	28	23
Z+	Extraer	43	42
	Acercar	40	38
Z-	Extraer	37	35
	Acercar	32	30

## 4 INSTALACIÓN

I. Revise la intensidad de la señal y alinee la línea de posicionamiento.

II. Instale el detector

- a. Con tornillo b. Con burilete adhesivo de espuma

★ Pase el cable a través de la perforación para cables en caso de requerirse entradas externas.

## Manual de usuario

Escanee el código QR para obtener más información y ayuda sobre el funcionamiento.

## Especificación

Espacio de detección	En función de la tabla de rendimiento de detección de imanes
Entradas externas	2
Protección antimanipulación	Anterior y posterior
Indicador led	Azul (alarma)
Temperatura de funcionamiento	-10 °C a 55 °C (14 °F a 131 °F) -10 °C a 40 °C (14 °F a 104 °F), certificado
Temperatura de almacenamiento	-20 °C a 60 °C (-4 °F a 140 °F)
Humedad de funcionamiento	10 % a 90 %
Dimensiones (An. × Al. × Pr.)	Sensor: 22,5 mm × 103 mm × 23,2 mm Vara magnética: 13 mm × 34,4 mm × 11,4 mm
Peso	59g
Frecuencia de transmisión	433.10 MHz
Alcance de radiofrecuencia	0,8 km (área abierta)
Batería	1 batería CR123A (incluida)
Vida útil de la batería convencional	5 años

## Português

## 1 APARÊNCIA

1. Adesivo magnético 2. Linha de posicionamento 3. Indicador  
4. Botão antiativação 5. Interruptor 6. Entradas externas 7. Bateria

## 2 REGISTRO

## 3 TESTE

Verifique se a posição de instalação está adequada.

Tabla de desempenho de detecção magnética

Eixos de operação	Evento	Sem distância nominal	Com distância nominal de 5 mm
		Distância no ar	Distância no ar
X+	Remover	11	13
	Aproximar	15	17
X-	Remover	11	13
	Aproximar	15	19
Y	Remover	33	28
	Aproximar	28	23
Z+	Remover	43	42
	Aproximar	40	38
Z-	Remover	37	35
	Aproximar	32	30

## 4 INSTALAÇÃO

I. Verifique a intensidade do sinal e alinhe a linha de posicionamento.

II. Instale o detector.

- a. com parafuso b. com fita dupla-face de espuma

★ (opcional) passe o cabo pelo furo apropriado se forem necessárias entradas externas.

## Manual do usuário

Leia o código QR para obter mais informações e ajuda na operação.

## Especificação

Faixa de detecção	De acordo com a tabela de desempenho de detecção magnética
Entradas externas	2
Proteção antiativação	Frontal e traseira
Indicador LED	Azul (alarme)
Temperatura de operação	-10 °C a 55 °C (14 °F a 131 °F) -10 °C a 40 °C (14 °F a 104 °F) certificado
Temperatura de armazenamento	-20 °C a 60 °C (-4 °F a 140 °F)
Umidade de operação	10% a 90%
Dimensões (L × A × P)	Sensor: 22,5 mm × 103 mm × 23,2 mm Adesivo magnético: 13 mm × 34,4 mm × 11,4 mm
Peso	59 g
Frequência de transmissão	433.10 MHz
Faixa de RF	0,8 km (área aberta)
Bateria	1 × CR123A (incluída)
Duração padrão da bateria	5 anos



Warning  
This is a class B product. In a domestic environment this product may cause radio interference in which case the user may be required to take adequate measures.



FCC Information  
Please take attention that changes or modification not expressly approved by the party responsible for compliance could void the user's authority to operate the equipment.  
FCC compliance: This equipment has been tested and found to comply with the limits for a Class B digital device, pursuant to part 15 of the FCC Rules. These limits are designed to provide reasonable protection against harmful interference in a residential installation. This equipment generates, uses and can radiate radio frequency energy and, if not installed and used in accordance with the instructions, may cause harmful interference to radio communications. However, there is no guarantee that interference will not occur in a particular installation. If this equipment does cause harmful interference to radio or television reception, which can be determined by turning the equipment off and on, the user is encouraged to try to correct the interference by one or more of the following measures:  
—Reorient or relocate the receiving antenna.  
—Increase the separation between the equipment and receiver.  
—Connect the equipment into an outlet on a circuit different from that to which the receiver is connected.  
—Consult the dealer or an experienced radio/TV technician for help.  
This device complies with part 15 of the FCC Rules. Operation is subject to the following two conditions:  
1. This device may not cause harmful interference.  
2. This device must accept any interference received, including interference that may cause undesired operation