



*Please refer to the warranty section for terms of your extended guarantee



MINI CHOPPER

Contents

Page No.

2	Contents
3	Reading and Storing the User Manual
3	Important Safety Instructions for Proper Use
6	Explanation of Symbols
7	Description of Parts
7	Before First Use of Your Mini Chopper
8	Using Your Mini Chopper
9	Food Chopping Guide
10	Care and Maintenance
10	Technical Specification
10	Plug Wiring Information
10	Recycling Information
13	Customer Support
Back Page	Warranty Information

READING AND STORING THE USER MANUAL



Before using this product, please read through this manual carefully paying particular attention to the safety instructions. Failure to do so may result in personal injury or damage to the product.

Carefully save this instruction manual for future reference. Ensure the user manual is included when passing the product on to any third parties.

IMPORTANT SAFETY INSTRUCTIONS FOR PROPER USE

When using electrical appliances, safety precautions should always be followed.

Only use the product as described in this user manual. Any other use is considered improper and may result in damage to property or persons.

The manufacturer or vendor cannot be held liable for damages or injury incurred through improper or incorrect use.

- **Read and familiarise yourself with all operating instructions before using this Mini Chopper.**
- Before plugging your unit into the mains supply, visually check that it is intact and has not suffered any transit damage.
- **DO NOT** use this product with a programmer, timer, separate remote-control system or any other device.
- Check that the voltage indicated on the data plate corresponds with that of the local network before connecting the appliance to the mains power supply.
- **DO NOT** immerse this appliance in water or any other liquids.
- Close supervision is required when using this appliance near children.
- Never leave this appliance within reach of children.
- This appliance shall not be used by children.
- Keep the appliance and its cable out of the reach of

children.

- Appliances can be used by persons with reduced physical, sensory or mental capabilities or lack of experience and knowledge if they have been given supervision or instruction concerning use of the appliance in a safe way and understand the hazards involved.
- Children shall not play with the appliance.
- Cleaning and user maintenance shall not be made by children.
- **DO NOT** leave the appliance unattended during use.
- **DO NOT** leave the appliance unattended whilst connected to the mains supply.
- Always use this appliance on a solid, level, non-flammable surface.
- Protect the unit from moisture whilst using this appliance outdoors.
- Repairs to electrical appliances should only be performed by qualified personnel. Improper repairs may place user at serious risk.
- It is imperative to unplug the mains cable after the appliance has been used, before it is cleaned and whilst being repaired.
- Regular, periodic checks should be carried out on the mains cable to ensure no damage is evident. Should there be any signs of damage the appliance should not be used.
- **DO NOT** operate this appliance with a damaged plug or mains cable, after a malfunction or after being dropped or damaged in any way.
- **DO NOT** allow the mains cable to hang over sharp edges or come in contact with hot surfaces.
- **DO NOT** allow the mains cable to hang over sharp edges or come in contact with hot surfaces.

- **DO NOT** use this appliance for anything other than its intended use.
- **DO NOT** push objects into any openings as damage to the appliance and/or electric shock may occur.
- This appliance is intended for household use only and should not be used for industrial or commercial purposes.
- Switch off the appliance and disconnect from the mains supply before changing accessories or approaching parts that move in use.
- Grasp the plug, not the cord.
- **DO NOT** touch the blades whilst the appliance is connected to the mains.
- Wash the blades in warm soapy water, rinse and dry thoroughly.

⚠ WARNING! The blades on this appliance are very sharp; extreme caution should be taken whilst cleaning.

Explanation of Symbols

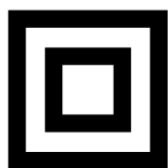
The following warning symbols or words are used in this instruction manual:



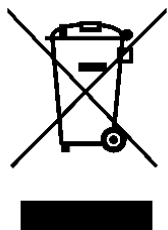
Products labelled with UK Conformity Assessment identifies products conforming to UK statutory requirements.



Products labelled with this symbol conform to applicable provisions of the European Economic Area.



This Class 2 symbol indicates that the product is electrically double insulated and does not require an earth connection.



You should now recycle your waste electrical goods and in doing so help the environment. This symbol means waste electrical products at the end of their useful life should not be disposed of with normal household waste and not sent to land fill. Please ensure it is taken to a suitable facility for disposal. Check with your Local Authority or retailer for recycling advice or visit www.recycle-more.co.uk, enter your postcode to find out your nearest recycling site.



This symbol provides useful additional information on the use of this product.



This designates a hazard with moderate risk, which may result in severe injury if not adhered to.

Description of Parts



1. Pulse Button
2. Motor Unit
3. Bowl Cover
4. Bowl
5. Blades

Before First Use of Your Mini Chopper

- Remove all packing materials and discard responsibly.
- Ensure all parts are present see Description of Parts above.
- Remove the **Bowl Cover** (3), the **Bowl** (4) and the **Blades** (5) and wash in warm soapy water, rinse and dry thoroughly.
- Do not immerse the **Motor Unit** (2) in water or any other liquids.
- Do not use harsh or abrasive cleaners.
- Not Dishwasher safe, do not clean any part of your Jug Blender in a dishwasher. Hand wash only.

⚠ WARNING! The blades on this Mini Chopper are very sharp, extreme caution should be taken whilst cleaning the blades.

Using Your Mini Chopper

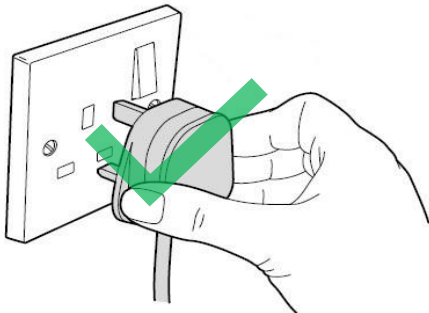
1. Place the **Bowl** (4) on a solid level surface, then slide the **Blades** (5) down over the shaft in the **Bowl** (4).

⚠ WARNING! Be careful whilst handling the blades as they are extremely sharp.



2. Place food to be chopped into the Bowl (4).

3. Place the **Bowl Cover** (3) onto the **Bowl** (4), position the **Motor Unit** (2) onto the **Bowl Cover** (3) such that the embossment on the bowl cover lines up with the hole in the motor unit, line up the motor unit locking tabs with the bowl locking slots until the motor unit locks in place.



4. Insert the mains plug into the nearest socket and switch the socket on (if applicable).

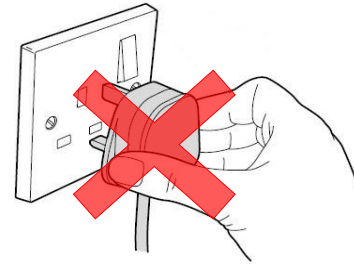
5. Steady the unit with one hand with the other press the **Pulse Button** (1) on the top of the unit to operate the Mini Chopper and to chop the ingredients – see Food Chopping Guide below.

i This Mini Chopper has a pulse button. Avoid running the motor continuously for a period of over 30 seconds.

The longer the pulse, the finer the texture. For coarsely chopped foods, use short pulses.

6. After use, ensure the **Blades** (5) have completely stopped rotating before removing the blended contents.

7. Remove the plug from the mains socket.



8. Remove the **Motor Unit** (2) and grasp the plastic blade hub at the top of the **Blades** (5) and pull the Blades out then remove the **Bowl Cover** (3). Empty the blended contents from the **Bowl** (4). Not use the **Bowl** (4) to store food.

Food Chopping Guide

<i>Type of food</i>	<i>Method</i>
Fresh bread	Use 80g (size: 100 mm x 100 mm x 10 mm) at a time, torn into several pieces. Process 20 seconds ON 2 min OFF until pureed as desired.
Carrot	Drain up to 150g (size: 15 mm x 15 mm x 15 mm) and process 20 seconds ON 2 min OFF until pureed as desired.
Almonds	Pulse or process up to 100g ON 20 seconds OFF 2 min until desired chop is reached.
Cookies, crackers	Pulse or process up to 150g cookies (size: 40 mm x 40 mm x 5 mm) or crackers (size: 40 mm x 40 mm x 5 mm) ON 20 seconds OFF 2 min until desired chop is reached.
Fresh beef or pork Cut into 60mm*20mm*20mm bulk	Pulse or process up to 100g beef or pork ON 20 seconds OFF 2 min until desired chop is reached.
Honey, Malt sugar (20-22°C)	Put in 50g of honey and 50g of malt sugar, ON 5 seconds OFF 2 min, until desired effect.

Care and Maintenance

- Always disconnect the Mini Chopper from the mains power supply before cleaning.
- Wash the **Bowl Cover** (3), the **Bowl** (4) and the **Blades** (5) in warm soapy water, rinse and dry thoroughly.
- Do not immerse the **Motor Unit** (5) in water or any other liquids.
- Do not use harsh or abrasive cleaners.

⚠ WARNING! The blades on this Mini Chopper are very sharp; extreme caution should be taken whilst cleaning.

Technical Specification

Model No.	SDA2732
Voltage	220-240V~ 50-60Hz
Power	500W
Capacity	1L
Class	II

Non-Rewireable Mains Plug

If your appliance is supplied with a non-rewireable plug fitted to the mains lead and should the fuse need replacing, you must use an ASTA approved one (conforming to BS 1362 of the same rating). If in doubt, consult a qualified electrician. Never use a mains plug with the fuse cover missing.

If you need to remove the plug – **DISCONNECT FROM THE MAINS** – and then cut it off the mains lead and immediately dispose of it safely. Never attempt to reuse the plug or insert it into a socket outlet as there is a danger of electric shock.

Recycling Information

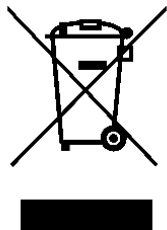
Disposal of the Packaging

Dispose of paper and cardboard in appropriate paper re-cycling facilities.

Dispose of recyclable plastics in appropriate plastic re-cycling facilities.

Dispose of non-recyclable plastics in the appropriate plastics collection service.

Disposal of the Product



You should now recycle your waste electrical goods and in doing so help the environment. This symbol means waste electrical products at the end of their useful life should not be disposed of with normal household waste and not sent to landfill. Please ensure it is taken to a suitable facility for disposal. Check with your Local Authority or retailer for recycling advice or visit www.recycle-more.co.uk, enter your postcode to find out your nearest recycling site.

Customer Support

Should you require any product information, replacement parts or accessories, please contact our customer care team at help@daewooelectricals.com or call 0161 831 7879.

- *Replacement parts and accessories are guaranteed for 1 year from the date of purchase.*
- *It is important to note that your warranty becomes invalid should non Daewoo parts or accessories be used with this appliance*





DAEWOO®

WARRANTY

Thank you for purchasing your Daewoo product.

As part of our commitment to quality, we are offering you an extra 2 years warranty in addition to your 1 year guarantee

Your Daewoo product is guaranteed for 1 year from the date of original purchase, with proof of purchase or receipt. If any defect should occur due to faulty workmanship or material, your faulty product should be returned to the place of purchase, replacement or refund is at the discretion of the retailer.

The guarantee is subject to the following provisions:

- The product must be correctly installed and operated in accordance with the requirements contained in the instruction manual.
- The product must be used solely for domestic purposes.
- It does not cover general wear and tear, damage, misuse or any consumable parts.
- The guarantee will be rendered invalid if the product is re-sold or has been damaged through inexpert repair.
- The guarantee is only valid within the UK and Eire.

Your standard 1 year guarantee will only be extended to the maximum available for your individual product upon registration. (Note: products must be registered individually and covers the main body and housing). If you do not register your product within 28 days of the original purchase date, your product will only be guaranteed for 1 year.

To validate your extended 2 year warranty* please register your purchase online within 28 days of the original purchase date by registering at

<https://help.daewooelectricals.com>

or

[Contact Us \(daewooelectricals.com\)](https://help.daewooelectricals.com)

****Your extended warranty is only valid with proof of purchase receipt and subject to the conditions outlined above.***

Daewoo is a registered trademark.
Produced and imported under license by
Eurosonic Group Limited
Brightgate House
1 Brightgate Way
Manchester M32 0TB UK
EU Rep: EuroSonic Magpie (ESM) Ltd. Ireland D05 X006
www.esgltd.com