

B2C Emporia Repair Guide E7LT.v1/ME7.v1/E7m.v1

Content:

• Introduction, usage Notice, precautions, warranty and Battery safety.....	2
• How to identify your model version.....	4
• Software update over the Air (FOTA).....	5
• Performing Factory Reset.....	6
• Switch between Emporia & Android Launcher (Quickstep).....	7
• SIM tray replacement.....	8
• Batterycover replacement.....	9
• Battery replacement.....	10
• Spare parts.....	11

Introduction:

This manual contains technical instructions for replacing original Emporia parts in an Emporia device and is intended for **layman** , without special repair experience or qualifications but with manual skills.

Usage Notices:

Emporia reserve the right to alter this document, or the device described herein at any time, without obligation to provide notification of such changes. All functionality, features, specifications, and other device information provided in this document, including but not limited to, benefits, design, pricing, components, performance, availability, and capabilities of the device are subject to change without notice.

Important!

- Read the entire manual first. If you're not comfortable performing the repairs as instructed in this manual, don't proceed.
- Do not touch exposed contacts to avoid ESD damage. (ESD= **e**lectro**s**tatic **d**ischarge) .Many electrostatic discharges are below the human perception threshold but can be harmful to electronic components.
- Failure to follow the repair instructions or to use non genuine Emporia parts or proper tools may cause fire or other safety issues and lead to personal injury.
- Remember to back up all important data on the device before performing this procedure.
- Emporia is not liable for the loss of stored data or the loss of other devices connected with the product. Emporia is not liable for any resulting financial losses, loss of earnings, loan or rental equipment, travel expenses, lost profits, or similar.

Warranty information:

Damage caused by repairs performed outside of Emporia or the Emporia Authorized Service Provider network is not covered by Emporia ´s warranty plans. Such damage may cause future repairs to be subject to out-of-warranty costs or render the device ineligible for future repairs by Emporia or Emporia Authorized Service Providers.

Battery Safety:

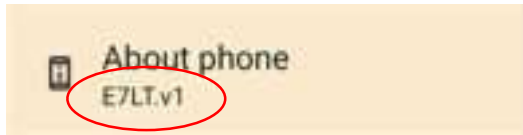
Important!

- This device contains a LithiumPolymer rechargeable battery cell.
- Battery safety is the number one concern when replacing Battery .
- Improper battery replacement, improper handling of parts, failure to discharge the battery before replacement , or failure to follow the provided instructions could cause battery overheating, swelling, venting, leaking, or a battery thermal event. These events could result in fire, injury, data loss, or damage to the device, parts, or other property.
- To avoid harmful fumes or overheating of the battery, do not puncture, strike, or crush a LIPO battery or any device containing one. Keep the work area free of foreign objects and sharp or pointed materials. Do not leave loose screws, spare screws, or small parts in the device. Do not use electrically conductive tools. Do not discard or drop the battery. Do not expose the battery to excessive heat or sunlight, or to temperatures outside its operating range. Used batteries must be handled and disposed of in accordance with local laws and regulations.
- Swollen Battery: If you suspect your battery is swollen, don't charge your device. Contact our customer care per mail: customercare@emporia.at

How to identify your model version:

1) By check system settings:

Navigate to: Settings/ System Settings/About phone



2) By check printed IMEI Label on device:

Remove Batterycover therefore see section: Battercover replacement

IMEI label is placed on bottom.



Software update over the Air (FOTA) :

Due continuous improvement or implementation of new features , bug fixing, new Network settings, a.s.o , the Software on your device can be updated via FOTA (Firmware Over the Air)

Therefore, please check on regular base if there is a new SW available.

1. Battery must be charged min 30%
2. WIFI Connection or Mobile data Connection* must be available.

(* please check with your operator – data limits, costs, roaming)

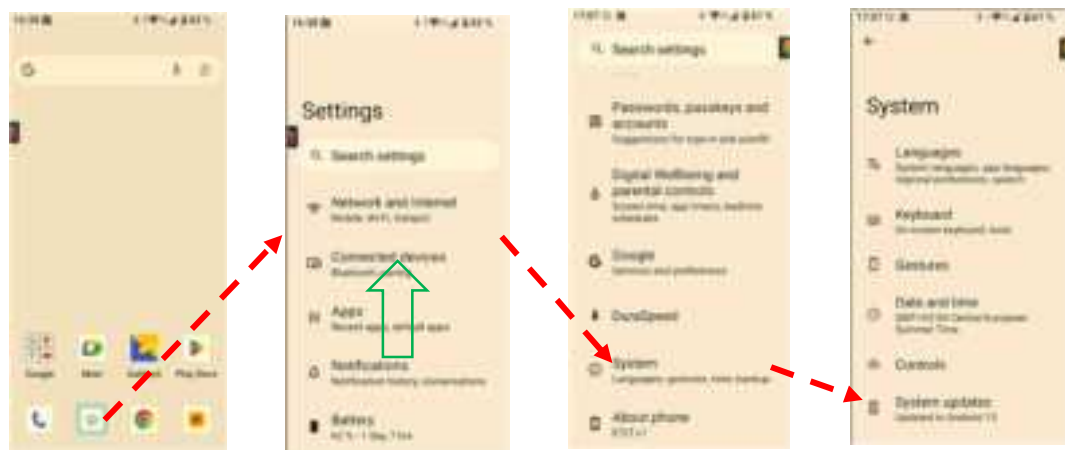
Emporia Launcher:

Start from Home screen



Android Launcher (Quickstep):

Start from Home screen



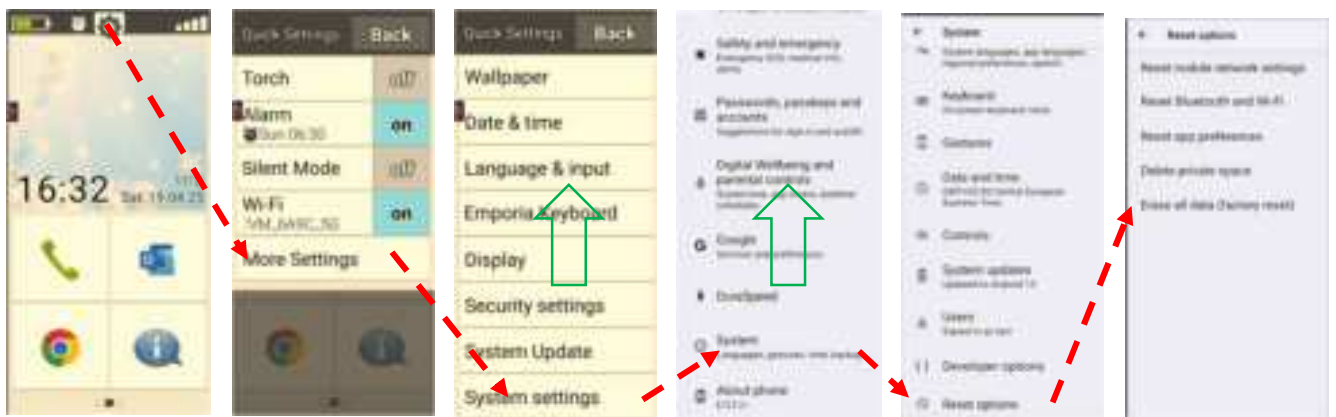
Performing Factory Reset:

Important!

- Remember to back up all important data on the device before performing factory reset, all personal data of device, will be lost.
- Make sure your device's battery level is sufficient, as losing power during a factory reset may result in system problems.
- Emporia is not liable for the loss of stored data or the loss of other devices connected with the product. Emporia is not liable for any resulting financial losses, loss of earnings, loan or rental equipment, travel expenses, lost profits, or similar.

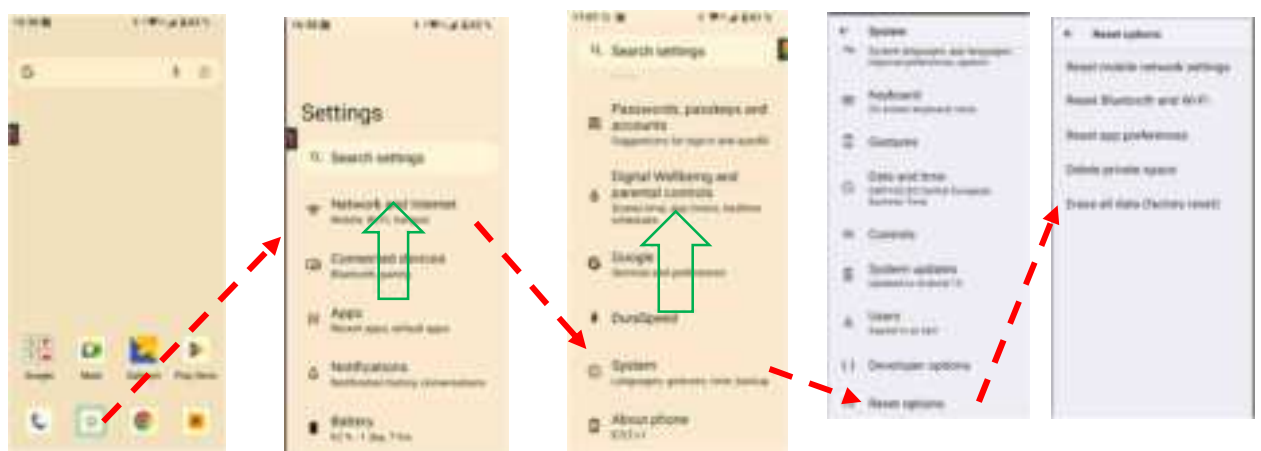
Emporia Launcher:

Start from Home screen



Android Launcher (Quickstep):

Start from Home screen



Model: E7LT.v1/ME7.v1/E7m.v1

REV: 01_ENG_B2C_15052025_AW

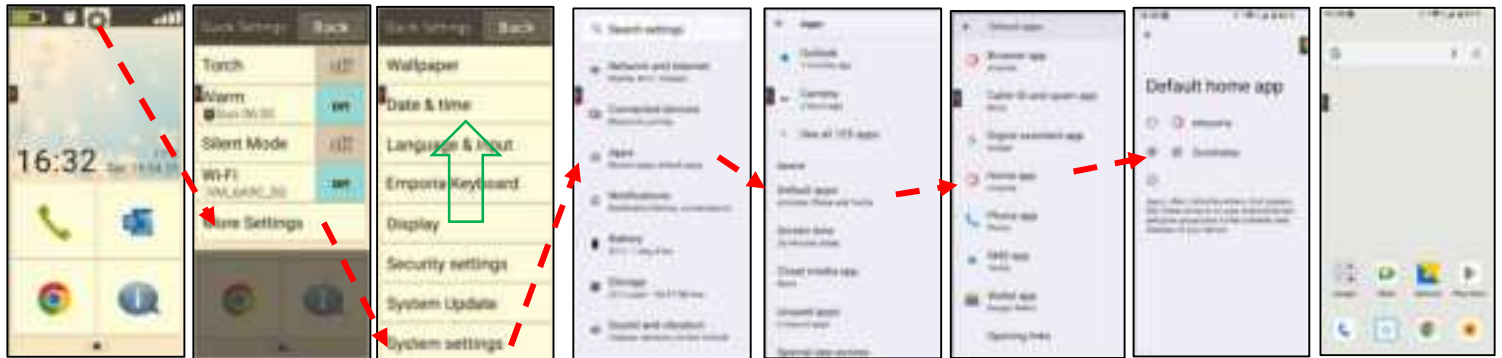
<https://www.emporiamobile.com/>

Google, Android, Gmail, Chrome are trademarks of Google LLC

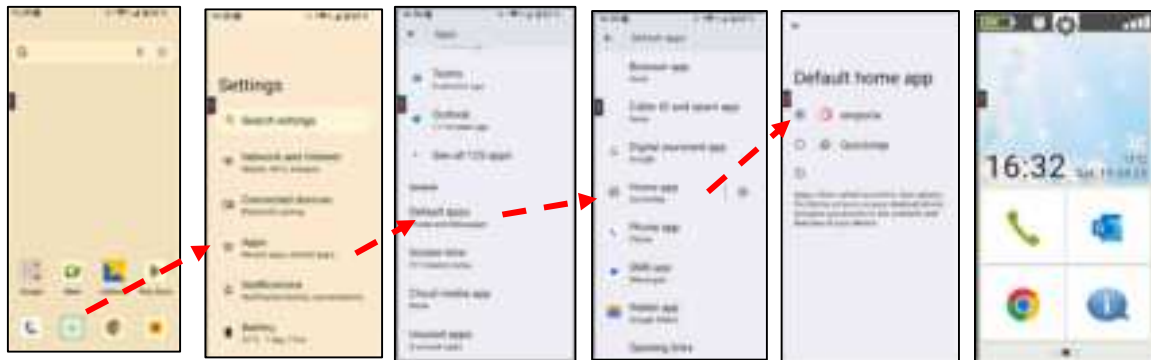
Transfer, reproducing and distribution, partially or all of this content in any form, without prior written permission, is strictly prohibited.

Switch between Emporia & Android Launcher (QUICKSTEP):

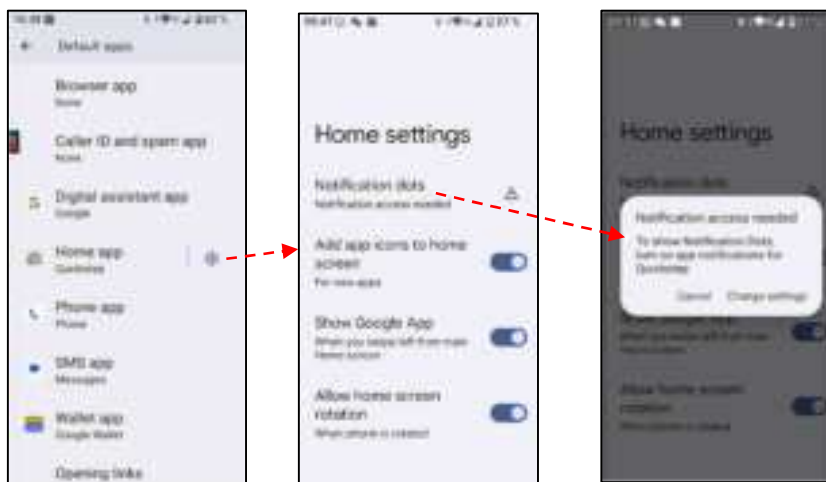
1) From Emporia Launcher to Android Launcher (QUICKSTEP)



2) From Android Launcher (QUICKSTEP) to Emporia Launcher



Hint: additional Home settings on Android launcher (Quickstep)

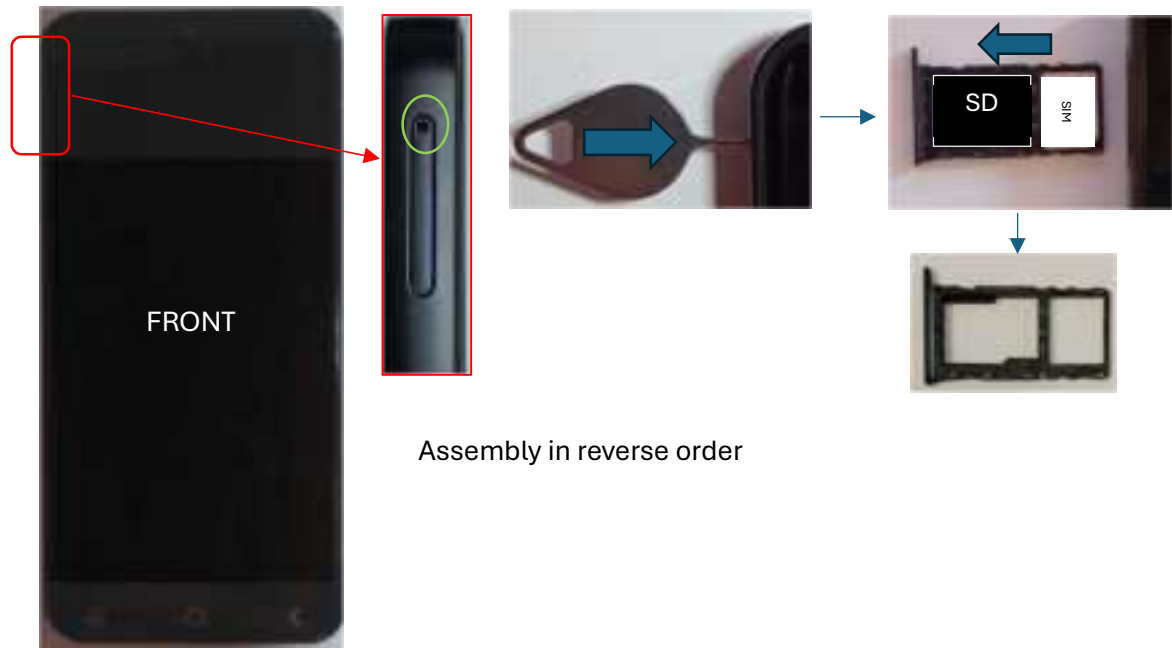



SIM tray replacement:

Needed tools : SIM TRAY needle (packed in Salespackage)



- 1) Switch off device
- 2) Insert the ejection pin into the hole, left top side, of the SIM card tray to loosen the tray and pull out the tray gently from the tray slot and remove related SD CARD and/or SIM CARD if equipped



Part No (Order number)	Part Description	Picture
11625	E6LT - SIM Tray	

Battery cover replacement:

IMPORTANT !

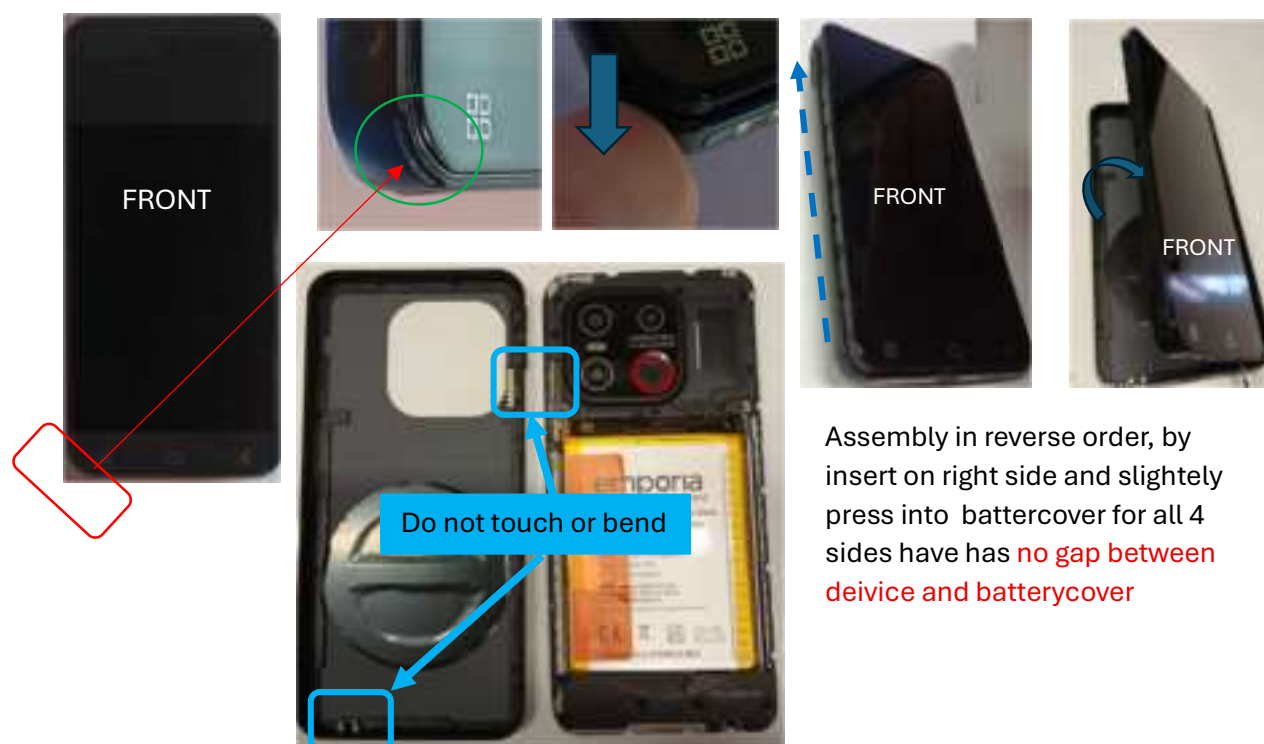
for Battery cover replacement it is mandatory for 1st remove SIM TRAY before start to remove Batterycover , pls see section “SIM tray replacement”

Needed tools : SIM TRAY needle (packed in Salespackage)



- 1) Switch off device
- 2) Remove SIM TRAY (see section “SIM TRAY replacement”) !!
- 3) Start on left bottom corner , by placing fingernail into the recess for removing the the battery cover and slightly press towards until the battery cover open appr 2-4mm (click noise) carefully slide along on left side for device get appr 5-8mm out from batterycover on left side, flip device to right side while keep batterycover stable on bottom and remove device.

After removing device from battery cover be careful for do not touch exposed contacts due potential ESD damage or bend the contact itself (blue framed area).



Assembly in reverse order, by insert on right side and slightly press into battercover for all 4 sides have has **no gap between device and batterycover**

Part No (Order number)	Part Description	Picture
18018	E7LT - Battery cover assembly(incl Fingerprint, volume key, charger contacts, Sidekey FPC, Metalsheet for Smartcover	

Battery replacement:

Important ! Attention and pre-cautions:

- Safe your personal data from device !!
- Before start disassembling, Battery must be discharged down to minimum SOC 15% and no mechanical damage or other visible damage should be present. Disconnect from charger before starting disassembling !!

Needed tools : SIM TRAY needle (packed in Salespackage)



- 1) Switch off device
- 2) Remove SIM TRAY (see section “SIM TRAY replacement”) !!
- 3) Remove Battery cover (see section “Battery cover replacement”) !!
- 4) Disconnect Battery from device by lift up Battery connector with finger nail or other non conductive tools. Appr 2-4mm .
- 5) Lift up to appr 90° angle the battery removing tabs (3x). With one hand, lift the battery using the tabs, applying appropriate force, while holding the device with the other hand. The movement should be from left to right.(see picture below)



Part No (Order number)	Part Description	Picture
AK-E7LT	AK-E7LT (LIPO/3500mAh/13.75Wh/3,85V/ incl BMS and FuelGauge IC)	

Model: E7LT.v1/ME7.v1/E7m.v1

REV: 01_ ENG _B2C_15052025_AW

<https://www.emporiamobile.com/>

Google, Android, Gmail, Chrome are trademarks of Google LLC

Transfer, reproducing and distribution, partially or all of this content in any form, without prior written permission, is strictly prohibited .

Spare parts:

For spareparts ordering visit our website : <https://www.emporiamobile.com/>

Part No (Order number)	Part Description	Picture
Open source (Freemarket)	Shaft:0,9x0,9mm	 or similar
18018	E7LT - Battery cover assembly(incl Fingerprint, volume key, charger contacts, Sidekey FPC, Metalsheet for Smartcover	
AK-E7LT	AK-E7LT (LIPO/3500mAh/13.75Wh/3,85V/ incl BMS and FuelGauge IC)	

EMP-SMARTCOVER-E6LT	Smart Cover for E6LT/E7LT.v1/E7m.v1/ME7.v1	
TL-E6-LT	Desktop Charger (USB-C Socket) for E6LT/E7LT.v1/E7m.v1/ME7.v1	