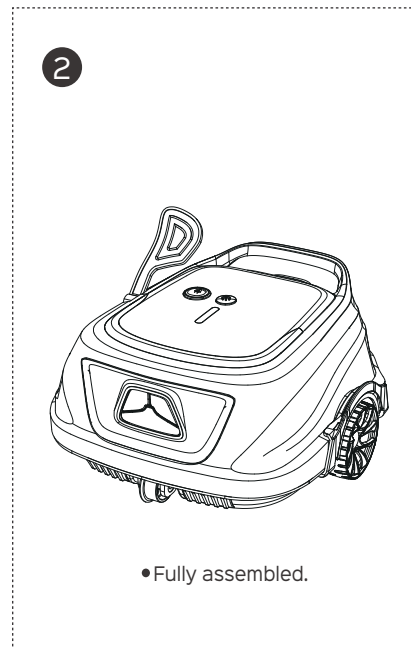
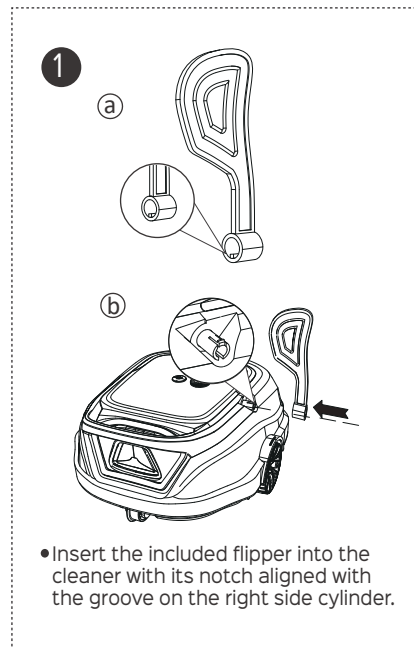
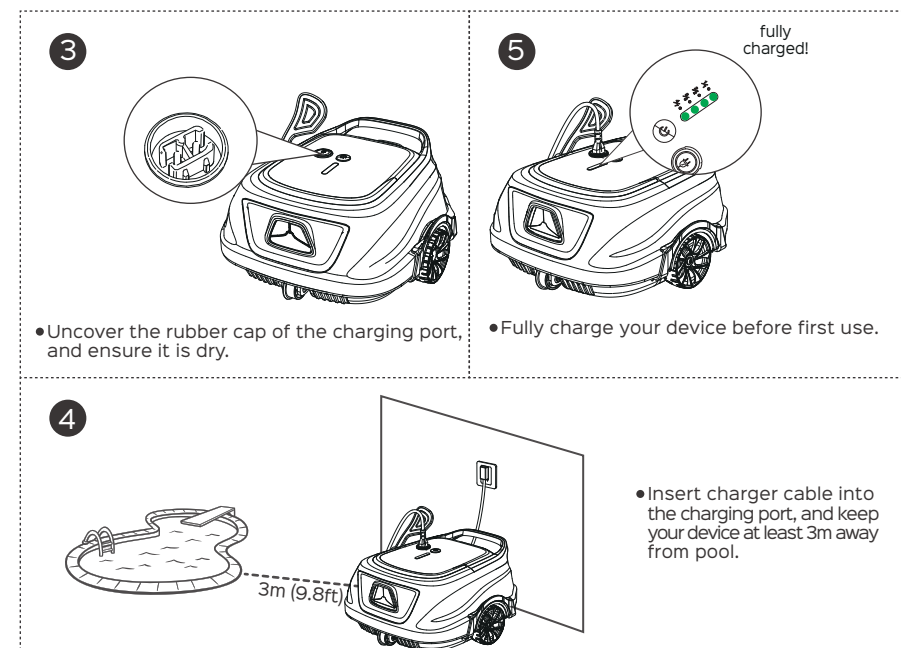


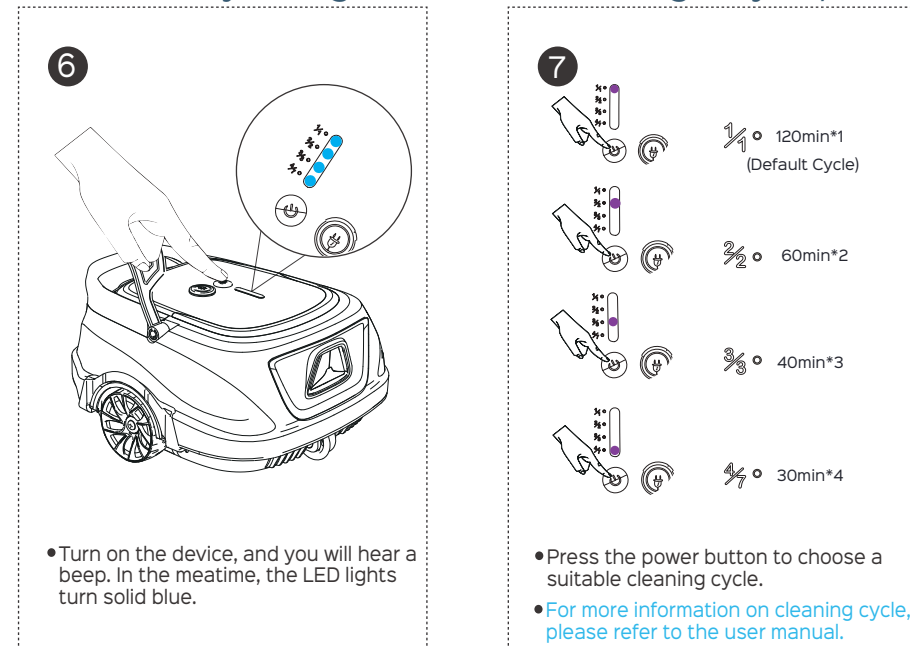
Step 1 -Assembling



Step 2 -Charging

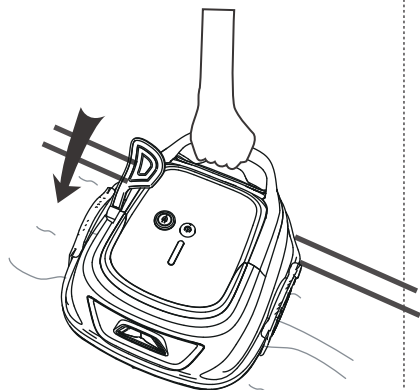


Step 3 -Customize your cleaning cycle (Ensure your robot is fully charged before choosing a cycle)



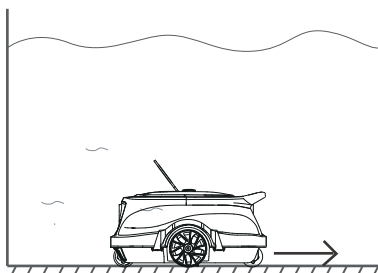
Step 4 -Submerging the device

9



- Submerge the device into the pool gently.

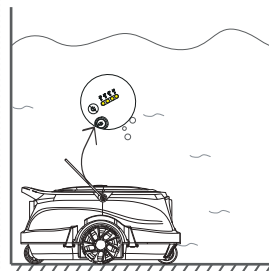
10



- Wait for the device auto-calibration for 15 seconds.
- LED turns flashing blue and start to clean.

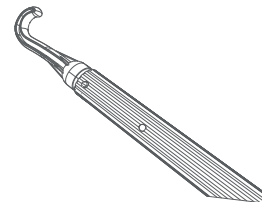
Step 5 -Removal from the pool

11



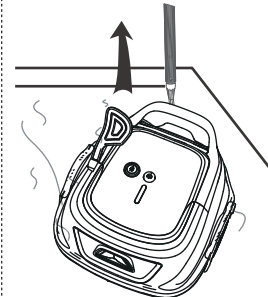
- Auto park by the wall when completing cleaning.
- If you have set a cycle other than the default, you should leave the robot in the pool to complete whole cycle.

12



- Insert the included hook into a standard pool pole.

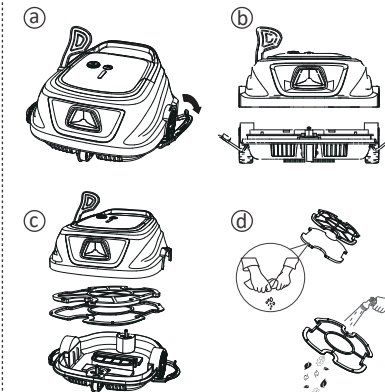
13



- Hook it out of the pool.

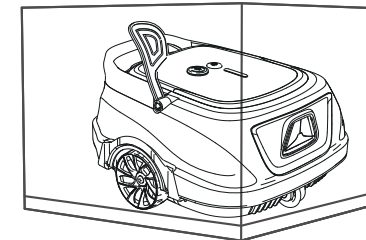
Step 6 -Cleaning the filter

14



- You should clean the filter after use. Insufficient cleaning may influence pool cleaning effect.

15



- Store the cleaner in a ventilated place and keep it out of direct sunlight or inclement weather.
- Charge the device at least every 3 months to maintain battery performance during the offseason.