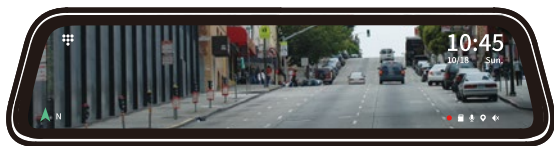


# WOLFBOX

---

Model:G840H



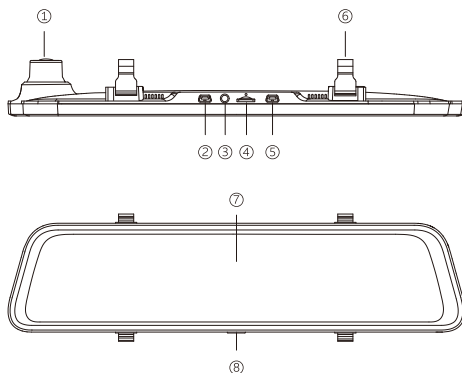
Notice : To avoid product loss caused by improper operation, please read the safety information of all operation instructions in this manual before using this product.



# CONTENTS

<b>1. Port description</b>	<b>01</b>
<b>2. SD card selection and installation</b>	<b>02</b>
<b>3. Screen icon description</b>	<b>03</b>
<b>4. Screen shortcut key adjustment</b>	<b>03</b>
<b>5. Function set</b>	<b>05</b>
<b>6.Parameters details</b>	<b>08</b>
<b>7. Installation instructions</b>	<b>09</b>
<b>8. Abnormal handling</b>	<b>14</b>
<b>9. Warranty&amp;Support</b>	<b>16</b>

## 1.Port description



NO.	Name	Overview
1	lens	Front lens, record the front image of the car
2	Rear lens connector	Port used to connect the rear lens
3	GPS connector	Used to connect GPS port (GPS function requires optional GPS antenna)
4	TF card slot	Provide extensible storage(class10 Max 64GB)
5	Power connector	Port for charging
6	Fasteners	The machine can be fixed with silicone straps
7	Display screen	11.66 inch touch screen display
8	Power button	Short press for off-screen , long press for power-off

## 2. SD card selection and installation

The data of SD card should be read and written repeatedly during the use of dashcam,the type of SD card is class 10.In order to work more stably and extend the service life of dashcam,we suggest formatting SD card per month on PC and change a new SD card per year.

### ■ SD card insertion

When SD card is inserted, make sure the dashcam is powered off.

The front of host



The back of host



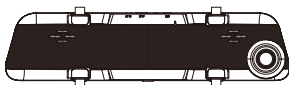
### ■ SD card removal

When taking out the SD card, please ensure that the dashcam is powered off.

The front of host



The back of host



### 3.Screen icon description



Click the icon to enter the DVR interface

10:45  
10/18 Sun.

Display time/date



Video icon: Recording, the color is red; Emergency recording ,the color of icon is yellow; out of recording ,The color is white.



TF card icon: When the host reads the card, it will be displayed; when the card is not read, it will show ⊗



Sound icon: Display when recording the sound, ⊗ when not recording



GPS icon: Display when there is GPS and ⊗ when there is no GPS  
(GPS function requires optional GPS antenna)



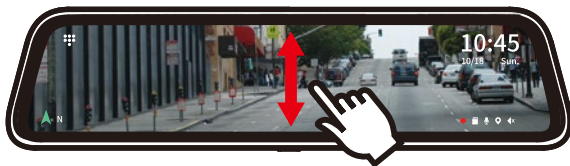
Mute icon: The mute status of the host is displayed. No mute icon when the host is not mute



GPS position icon: The GPS position status indicates the current driving position of the car  
GPS unpositioned status icon automatic hiding  
(GPS function requires optional GPS antenna)

### 4.The function of the screen shortcuts

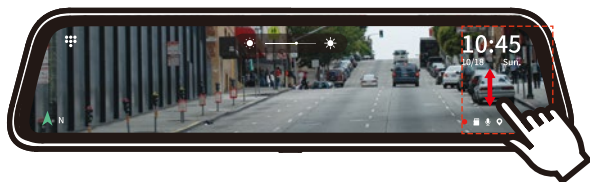
- While recording ,swiping the screen up and down adjusts the Angle of view



- While recording ,sliding the screen left and right to switch front and back camera



- While recording ,slide the area inside the red frame up or down to adjust the screen brightness



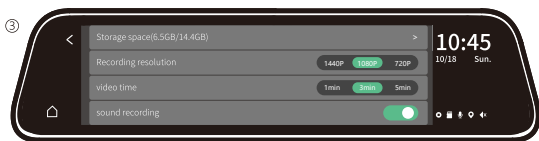
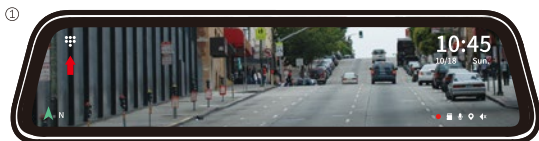
- While recording ,Double-click the screen to capture the current video



## 5. Function set

### 5.1 Function interface

When you need to enter the host function interface , click the enter icon , press the pause button on the screen to pause recording, then press the setting button to enter the menu.



- Storage space: click to view the storage condition and format SD card
- Recording resolution : 1440P/1080P/720P optional
- Video time : The video will be archived at a set time of 1 minute/3 minutes /5minutes
- Sound recording :on/off optional

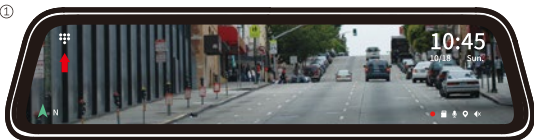


- G-sensor : Optional Off / High / Medium / Low
- Parking monitoring mode: turn on the parking monitoring mode after entering, and the monitoring sensitivity and time-lapse video can be adjusted
- Display mode: optional screen On / Off
- Screen brightness: Low, medium and high are optional
- Volume: Optional on, Low, Medium, High
- Time and date: after entering, you can set the GPS automatic setting time, 24-hour system, time zone, or you can set the date and time manually (GPS function requires optional GPS antenna)
- Language: select screen display language
- GPS information: click to view GPS information
- Reversing aid line: optional On/Off
- Factory Settings: click to set factory restore Settings
- About the machine: enter to view the machine information

## 5.2 Video playback interface

Click the enter icon, pause the video and click the history file icon to enter the playback interface.

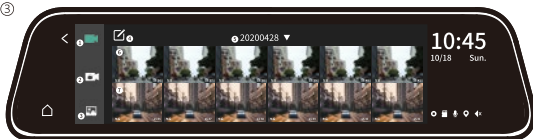
①



②



③



## NO. Overview

- 1 Video icon, click the icon to display the video file thumbnail
- 2 Lock the video icon, click the icon to display the thumbnail of the locked video file
- 3 Image icon, click the icon to display the image file thumbnail
- 4 Edit the icon, click the icon to edit the file
- 5 File date, click to select the date you want to view the file
- 6 Front camera file
- 7 Rear camera files

## 6. Parameter detail

CPU	Hi3556V200
Processor	ARM Cortex A7 MP2 @900MHz
RAM	1Gb DDR3
Operating system	LiteOS
External memory card	Max support 64G ,at least CLASS10
Display Size	11.66 inch
Display Type	IPS
Display Resolution	1920*380
Front lens pixels	4MEGA
Front lens aperture	F2.0
Front lens FOV	H=107° V=55° D=148°
Front lens FPS	25fps
Rear lens pixel	2MEGA
Rear lens aperture	F1.8
Rear lens FOV	H=112° V=60° D=140°
Rear lens FPS	25fps
Rear lens resolution	Front 2560*1440P Rear 1920*1080P
Video format	MP4
Image format	JPG
Working temperature	-30℃~70℃
Storage temperature	-40℃~80℃
Function	streaming media rear view mirror /strong light inhibition/ video time lapse/Low voltage protection/Parking monitor/G-Sensor Vehicle trajectory/Touch screen

## 7. Installation introduction

### 7.1 Host installation method

Step1: Fix the silicone button in the host on both sides of the fixed parts

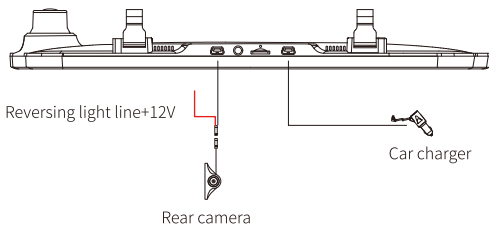


Step2: Buckle the product in the rearview mirror by silicone button



Step 3: Adjust the front lens to the right position

### 7.2 Rear lens installation method





Step 1: Secure the rear camera with 3M adhesive

Find the best position, tear off the 3M adhesive on the rear camera and install the rear camera near the license plate lamp. (If you need to adjust the Angle, install the rear camera bracket on the rear camera and tighten it with screws first.)



## Step 2: Remove the panel

Remove the inside panel of the trunk to expose the car's rear wiring room. Pop up your trunk and look for a solid interior panel that covers the other side of the license plate mount area. Then, insert a trim removal tool or other thin device behind the panel and pry it open.



## Step 3: Hide the line

Use the trim strip removal tool to pop up the tailgate trim strip, then the cable is inserted from the outside into the trunk of the car.



Step 4: Connect the rear lens power cord to the extension cord

Connect the power cord to the rear camera extension cord after plugging in the rear camera extension cord.



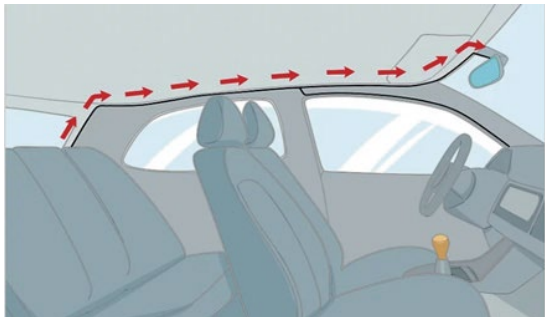
Step 5: Connect the red line with Reversing control line

Reversing control lines are usually located at the rear of the car, although their position may vary, so be sure to refer to the car's manual. Use pliers or a wire stripper to strip the rubber and expose live wires.



Step 6: Wire the power cord of the rear camera to the front of the car

If desired, use the trim tool to pop the windshield panel directly above the windshield. Then, pass the cable through the exposed chamber.



Step 7: Connect the car charger to the charger adapter to supply power for the dashcam





Step 8: Ignite the car and light the dashcam



## 8.Abnormal handling

Try restarting the machine if some functions do not work properly or if you have changed the Settings

Reminder low battery/set not to save/the ignition shuts down automatically?

- 1 , Remove the memory card, connect the machine to the power source and charge it for 4 hours.
- 2 , Contact the merchant to replace the built-in battery.

Memory card is full?

- 1 , Format the memory card test.
- 2 , Adjust the "G-sensor" inside the machine to low , formatting the memory card per month.
- 3 , Change a new memory card.

Please insert SD card/SD card not recognized?

The memory card is damaged/Card speed low/Memory CARDS are not compatible/no card /Please replace the original high speed TF card.

Unable to play image/damage document?

- 1 , If the file name or folder name has been changed on the computer.
- 2 , If the image file is post-processed by a computer, Or non-native activities Image, The device will not be guaranteed to play properly.
- 3 , The storage card is broken, please change a new memory card.

Black screen/Abnormal screen/flash screen?

- 1 , Restart to see if it can be restored.
- 2 , Reset the system.
- 3 , Contact the merchant for repair.

Crash ?

- 1 , Restart to see if it can be restored.
- 2 , Remove the memory card to test whether the memory card caused the crash.
- 3 , Reset the system test.
- 4 , Contact the merchant for repair.

Can not boot?

- 1 , Check if the power cord is connected properly.
- 2 , Unplugged memory card boot test.
- 3 , Connect the machine to the computer to start test.
- 4 , Reset the system test.

## 9. Warranty & Support

### • Warranty

- Any quality issues, 1 year warranty.

### • Support

- If you have any questions about the product functions or installation, please feel free to contact us through amazon or **service. wolfbox@gmail.com**. Save's inquiries will be answered within 6-12 hours of the working day.

### • Your opinion matters

- We work hard day and night to improve the quality of our products, services and the user experience. Please feel free to contact our company if you have any valuable suggestions and equipment for product improvement. Expecting your voice.

- For more info: WOLFBOX     YouTube

- Email: [contact@wolfbox.com](mailto:contact@wolfbox.com)

- Website: [www.wolfbox.com](http://www.wolfbox.com)



WhatsApp



Line

**WOLFBOX**