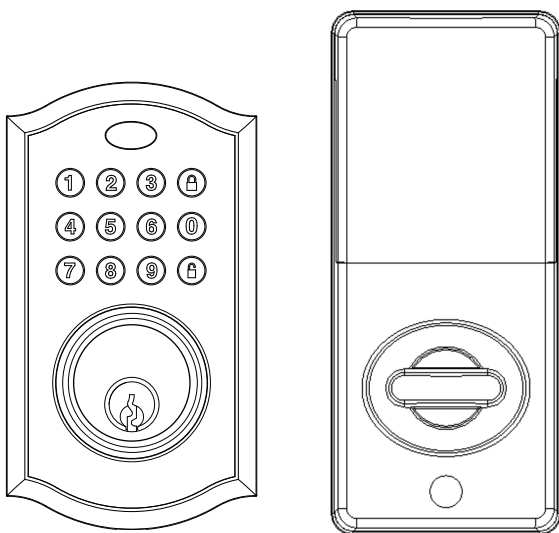




Installation & Operation Guide

Electronic Lock



Model: M15

Customer Support:
Phone: +1 833 553 0460
Email: support@kingforceusa.com

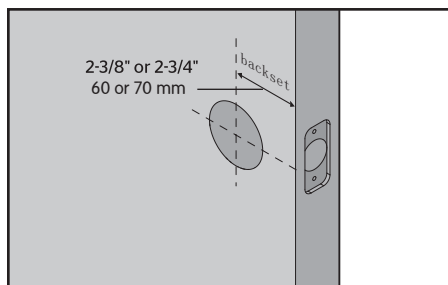
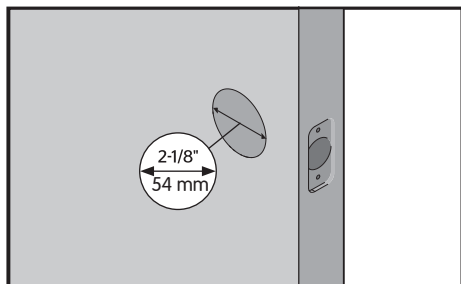
Customer Support:
Phone: +1 833 553 0460
Email: support@kingforceusa.com



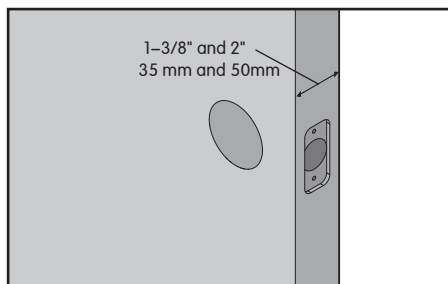
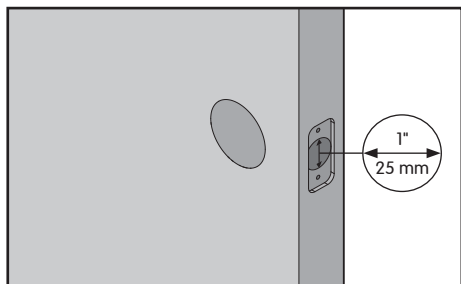
Prepare the door and check dimensions

If drilling a new door, use the supplied template and the complete door drilling instructions

1. Measure to confirm that the hole in the door is 2-1/8" (54 mm).
2. Measure to confirm that the backset is either 2-3/8" or 2-3/4" (60 or 70 mm).

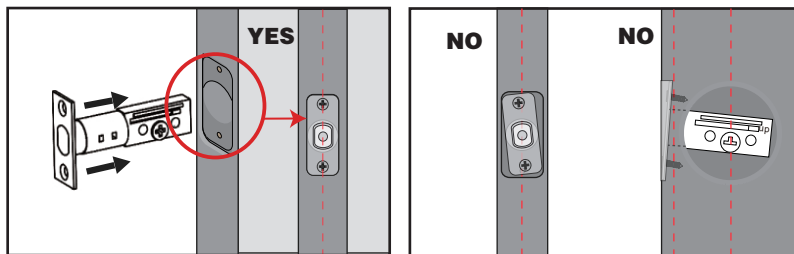
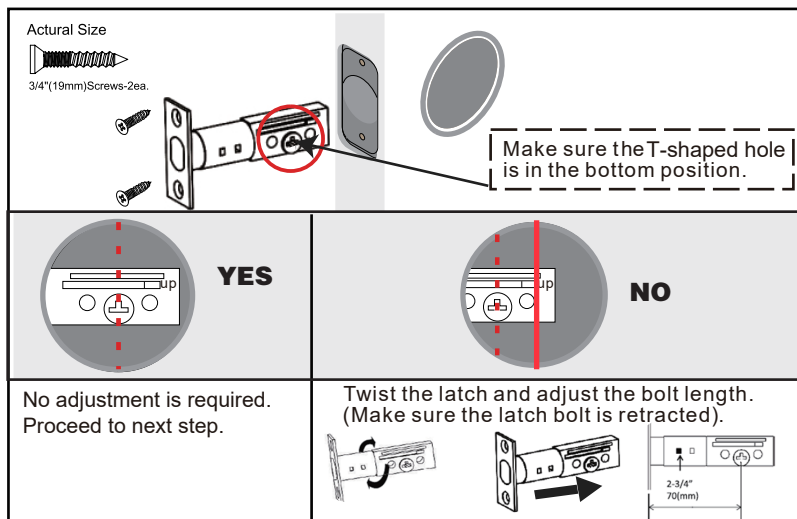


3. Measure to confirm that the hole in the door edge is 1" (25 mm).
4. Measure to confirm the thickness of the door is between 1-3/8" and 2" (35mm and 50mm).

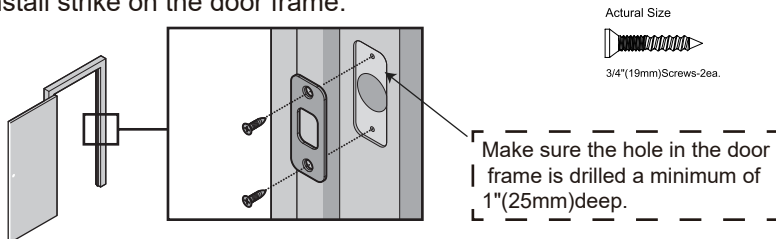


Install the latch and strike

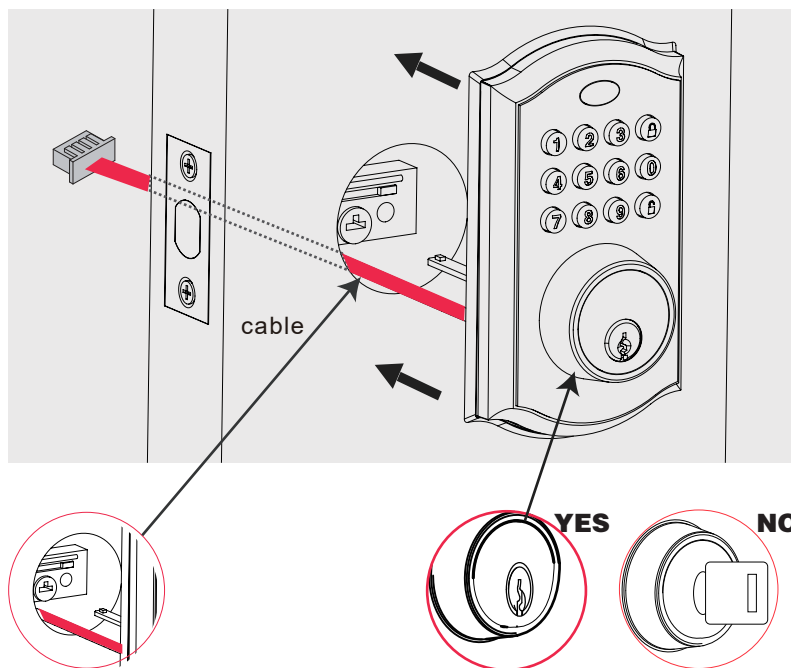
1. Insert the latch bolt into the door.



2. Install strike on the door frame.



Install the exterior assembly

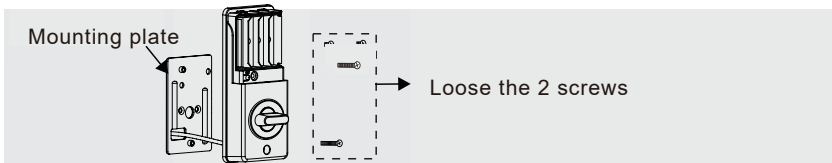


Route the cable through the door below the bolt and push the keypad onto the door.

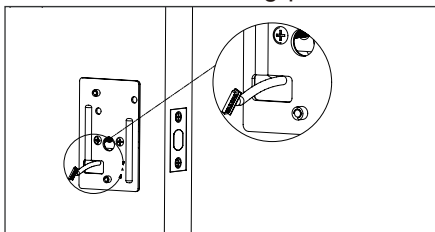
The key must be pulled out when installing.

Install the interior assembly

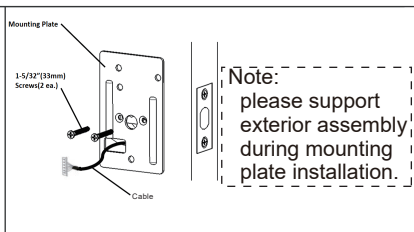
1. Take off the mounting plate.



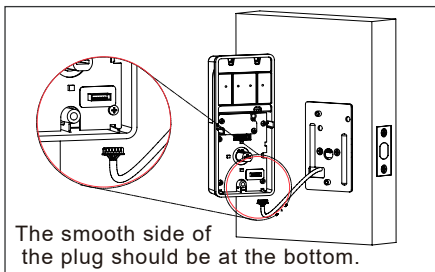
2. Route cable through the bottom of mounting plate.



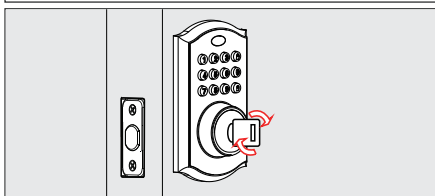
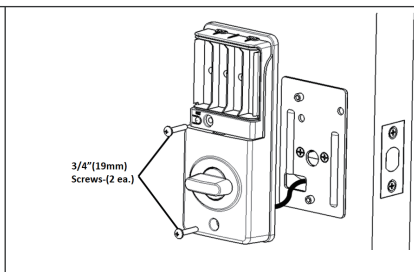
3. Tighten screws evenly.



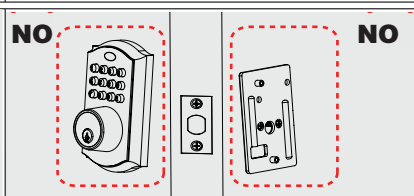
4. Ensure tight cable connection.



5. Tighten screws evenly.



Insert key and test latch.
if latch does not extend or retract smoothly.
please adjust mounting plate screws.

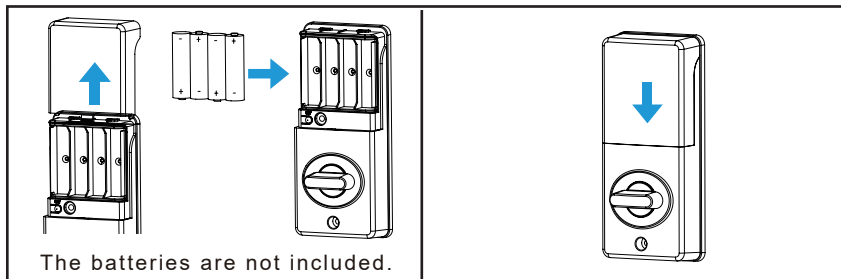


If the keypad and mounting plate are deflection.
please loose mounting plate screws
and adjust.


Install the batteries and perform the door handing process

Note: Do not use rechargeable batteries or Non-alkaline batteries.

1. Install 4 AA batteries in battery pack.

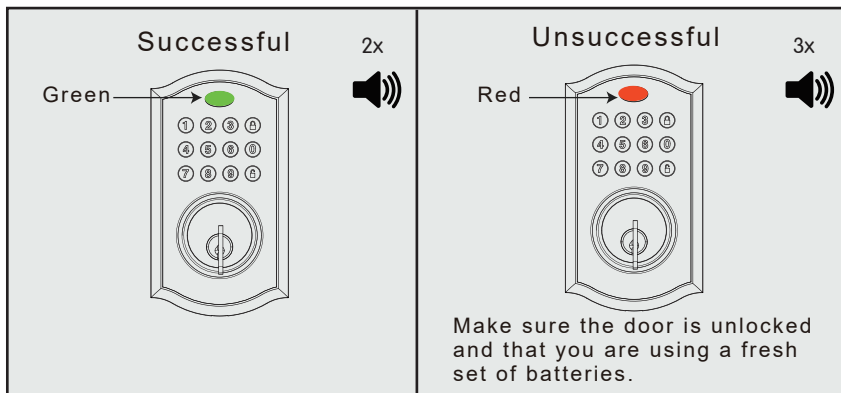


2. Perform the door handing process.

Press , the latch bolt extends by itself.



If the latch bolt extends or retracts not smoothly, please check the latch and re-install the lock.



Programming Guide

The Tuya APP is available for iOS and Android devices-free of charge. You can set up, operate and control all your Kingforce products with Tuya app.

Download Tuya App



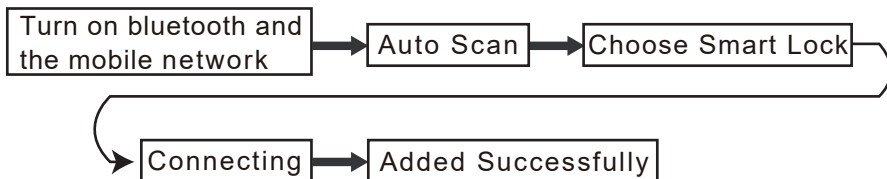
Two methods to download Tuya App.

Method 1: Scan the following QR code to download Tuta App.

Method 2: Search Tuya Smart in APP store or Android APP store to download



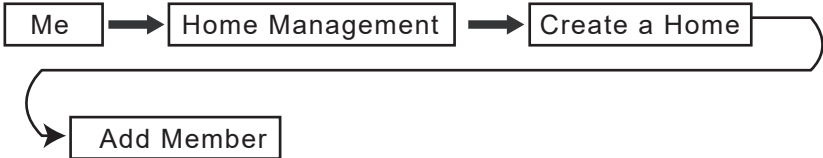
Connect smart lock



(*Attention: the smart lock and the phone can only be allowed one-to-one connection at the same time. It means that if your phone is connecting with the smart lock, then the other phone can't connect the smart lock.)

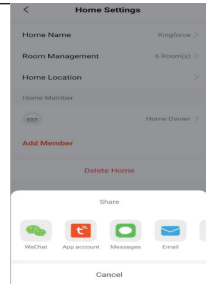
Advanced setting optional

How to set up a new entrance



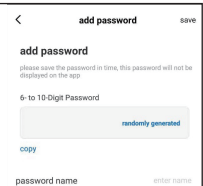
Step 1: Invite your members to family

with invite code by Tuya account, Wechat and SMS.

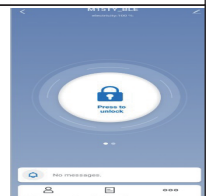


Step 2: Control smart lock (Two ways)

① The administrator: Home → Member → management → Open mode → Password → Create a password to members.



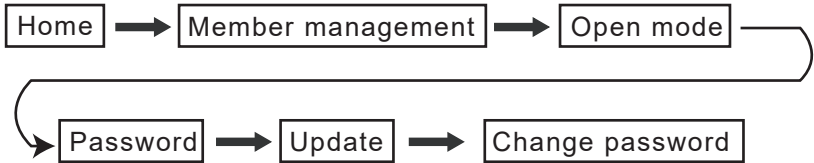
② The users: Control smart lock by swiping phone.



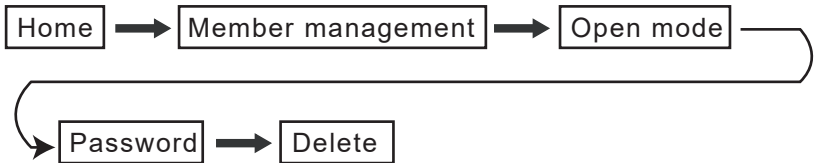
Step 3: Set up a new entrance successfully

Advanced setting optional

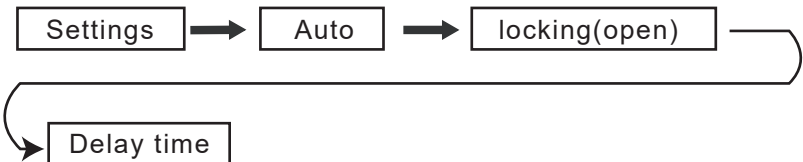
How to modify password



How to delete password



How to set delay time



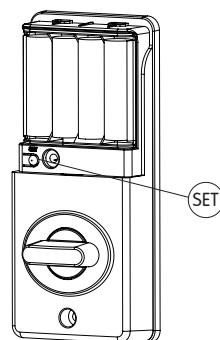
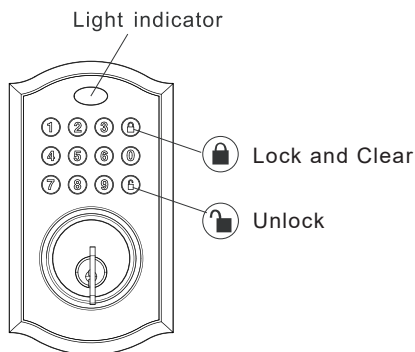
Advanced setting optional

How should I do if I can't connect to smart lock

Restart the Bluetooth, and try again.

How many passwords can be added

It can be added for ten passwords.



Protection mode:

If you enter the wrong code 5 times, the keypad will be locked 90 seconds when you press any button, you will hear 3 beeps and 3 red lights.

How to exit protection mode:

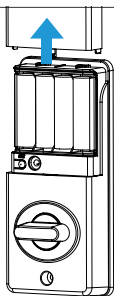
option 1. wait for 90 seconds and the protection mode will be exited.

option 2. remove the battery for more than 5 seconds, and then reinsert the battery.

Factory default reset

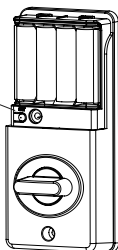
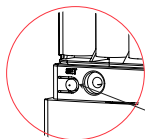
A factory reset will delete all codes associated with the lock.

1

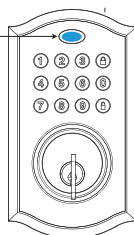


Open the battery cover.

2



blue



5x



Keep press holding set button more than 5 seconds until the lock short beeps 5 times and light flash blue 5 times. then the beeps 1 second and light flash green 1 times. the lock has been reset successful.

System Alerts



Customer Support:
Phone: +1 833 553 0460
Email: support@kingforceusa.com

Alert	Reason	Solution
button flashes red 3 times with 3 beeps.	Door jammed while attempting to lock.	Manually re-lock door. If needed, reposition strike.
	Incorrect User Code entered.	Re-enter User Code.
button flashes red 3 times with 3 beeps.	5 incorrect User Codes entered within one minute.	Re-enter User Code after 90 seconds keypad lock out.
LED redlight when press any button.	Low battery.	Replace batteries.
LED redlight when press any button. and can not unlock/lock.	Super low battery.	
LED green light and beeps 1 second after press unlock/lock button. the lock no respond.	Poor quality battery.	
The keypad and light indicator no respond.	Battery run out.	Use Micro-Usb supply power to unlock or key to unlock then replace batteries.
	Bad cable connection.	Re-connect the cable.

Customer Support

Quick start tip:

1. We are sincerely recommend you to scan the QR code below to watch our product installation and programming video on Youtube which will save your valuable time.



2. Our customer support team is providing video call guide service now, which will guide you to complete the lock installation and setups in minutes. Feel free to email us at support@kingforceusa.com to schedule your video call.

Prepare Door And Jamb

1. TEMPLATE

- Cut out template printed of this Manual (Figure 1a).
- Fold template and place on door 36" (915mm) from the ground as marked (Figure 1b).

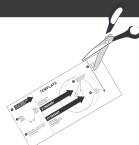


Figure 1a



Figure 1b

2. MARK THE DOOR FOR DRILLING

- Mark center hole on door edge through guidance on template for 1" (25mm) latch bolt (Figure 2a).
- Mark center hole on door face through guidance on template for 2-3/8" (60mm) or 2-3/4" (70mm) (Figure 2b) backset.



Figure 2a



Figure 2b

3. DRILL AND CHISEL DOOR

- Drill 2-1/8" (54mm) hole through door panel as marked for lock set (Figure 3a).
- Drill 1" (25mm) hole in center of door edge for Deadbolt Latch Assembly (Figure 3b).
- Insert Deadbolt Latch Assembly in hole keeping it parallel to face of door. Mark outline and remove latch (Figure 3c).
- Chisel 5/32" (4mm) deep or until latch face is flush with door edge (Figure 3d).



Figure 3a



Figure 3b

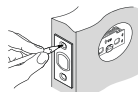


Figure 3c

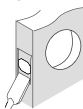


Figure 3d



NOTE: For Drive in Latch, drill hole size indicated on template and press until it is flush with door edge.

4. MARK AND DRILL DOOR JAMB

- Mark center hole on edge of jamb even with the center of the Latch Bolt on door edge. (Figure 4a).
- Drill 1" (25mm) hole 1-3/16" (30mm) deep in door jamb on center mark (Figure 4b).
- Outline outside edges of Strike Plate (Figure 4c).
- Chisel 5/32" (4mm) deep for Strike Plate or until it is flushed (Figure 4d).
- Install Strike Plate using two 3/4" (19mm) screws provided (Figure 4e).

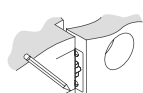


Figure 4a

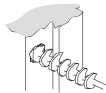


Figure 4b

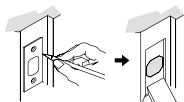


Figure 4c

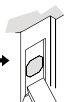


Figure 4d

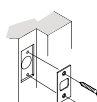


Figure 4e

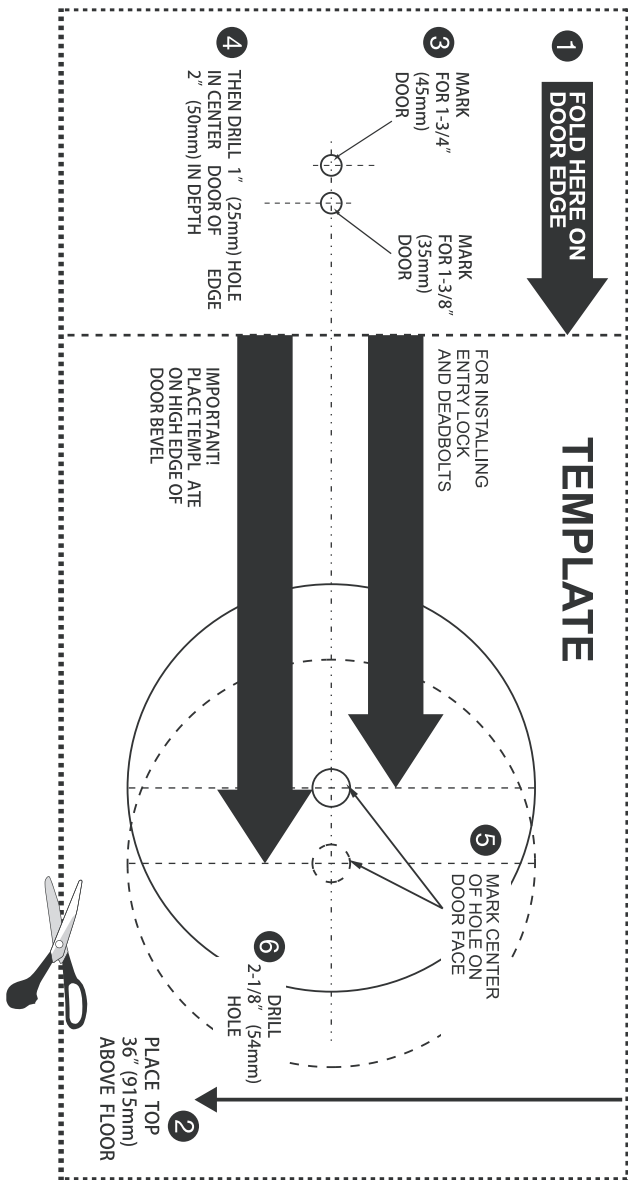
Tools Required

Tools Required for Installation on undrilled Doors:

- Phillips Screwdriver (DO NOT USE POWER DRILL !)



Template



Back side of Template

FCC Warning

This device complies with part 15 of the FCC rules. Operation is subject to the following two conditions: (1) this device may not cause harmful interference, and (2) this device must accept any interference received, including interference that may cause undesired operation.

Changes or modifications not expressly approved by the party responsible for compliance could void the user's authority to operate the equipment.

NOTE: This equipment has been tested and found to comply with the limits for a Class B digital device, pursuant to part 15 of the FCC Rules. These limits are designed to provide reasonable protection against harmful interference in a residential installation. This equipment generates uses and can radiate radio frequency energy and, if not installed and used in accordance with the instructions, may cause harmful interference to radio communications. However, there is no guarantee that interference will not occur in a particular installation. If this equipment does cause harmful interference to radio or television reception, which can be determined by turning the equipment off and on, the user is encouraged to try to correct the interference by one or more of the following measures:

- Reorient or relocate the receiving antenna.
- Increase the separation between the equipment and receiver.
- Connect the equipment into an outlet on a circuit different from that to which the receiver is connected.
- Consult the dealer or an experienced radio/TV technician for help.

Radiation Exposure Statement

This equipment complies with FCC radiation exposure limits set forth for an uncontrolled environment. This equipment should be installed and operated with minimum distance 20cm between the radiator and your body.