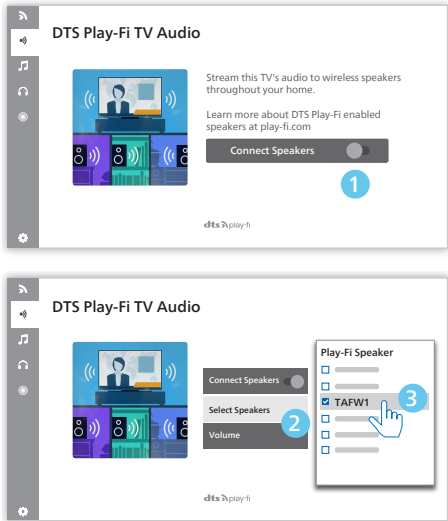


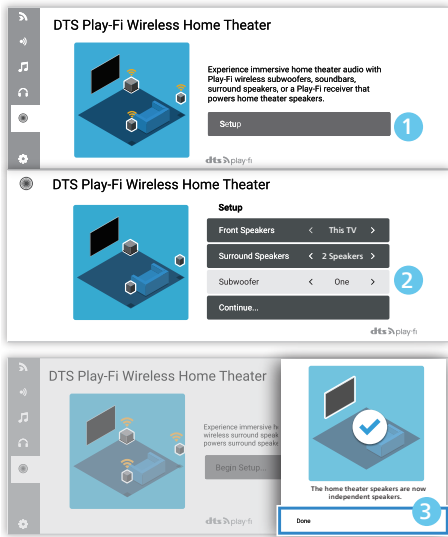
TV Audio Setup

Follow the on-screen setup.



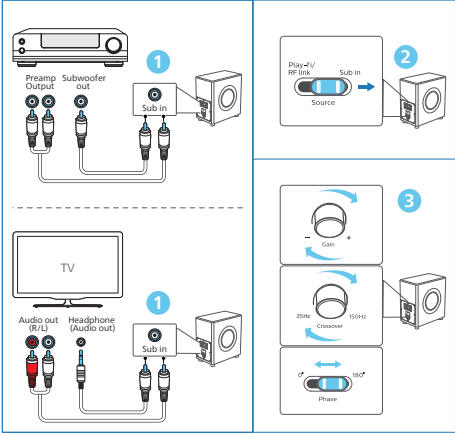
Surround sound Setup

Follow the on-screen setup.



Wired connection (Sub-in)

When source switch is at Sub in source, FW1 shall behave as wired subwoofer. It shall render the subwoofer signal via analog input.



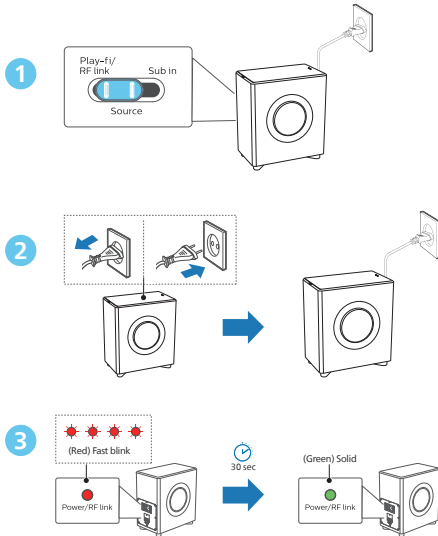
- 1 Use a subwoofer cable to connect the other device or TV's audio output sockets to the **Sub in** socket on the unit.
- 2 When FW1 is used as a as wired subwoofer, source switch must be at Sub in position.
- 3 The available controls and functions (at the back of the subwoofer) are as below:

Functional Settings	Default
Gain	-6 dB to +6 dB 0 dB
Crossover	25 to 150 Hz -
Phase	0 or 180 degree 0 degree

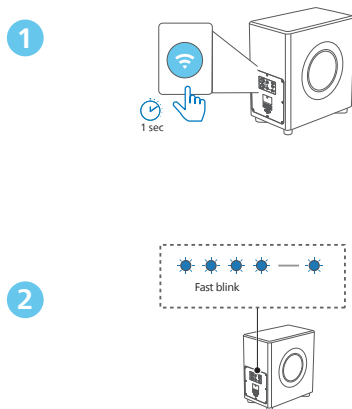
Note

- When FW1 as Play-fi subwoofer, above controls and functions are not applicable.

Wireless connection (Play-Fi > RF link)



Wireless connection (RF link > Play-Fi)



Upgrade firmware

To get the best features and support, update your product with the latest firmware version.

Update firmware via Philips Sound (Settings > Fine Tune / Update Firmware)

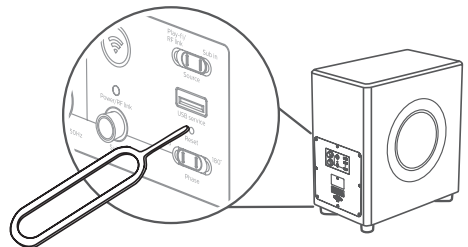
The firmware for MCU and DSP can be upgraded to the latest version via Philips Sound powered by DTS Play-Fi. Please go to settings menu and select PS Fine Tune / Update Firmware option to check it out. If the upgrade is released, the upgraded icon can be pressed to proceed automatically.

Once this product is connected to Wi-Fi, it can receive over-the-air firmware update. Always upgrade with the latest firmware version to improve the performance of this product.

Factory reset

Reset device to default setting.

- 1 Set is ON, use a needle to push the **Reset** button on rear of subwoofer for 5 seconds.



- You will hear a tone and then the subwoofer will automatically restart.
- The subwoofer is restored to factory defaults.

5 Product specifications

Note

- Specifications and design are subject to change without notice.

Wireless

5.8G Wireless	
frequency range	5742 ~ 5852 MHz
Transmitter power (EIRP)	≤ 10dBm

Network supported

WiFi IEEE 802.11a/b/g/n/ac Wireless frequency band (Wi-Fi) /Radio frequency power transmitted (EIRP)	
2.4G Wi-Fi	2400 ~ 2483.5 MHz / ≤ 20dBm
	5150 ~ 5350 MHz / ≤ 20dBm
5G Wi-Fi	5470 ~ 5725 MHz / ≤ 27dBm
	5725 ~ 5850 MHz / ≤ 14dBm

Subwoofer

Power supply	100-240V~ 50/60Hz
MAX output power by speaker	240W RMS @10% THD
Power consumption	50 W
Standby consumption	< 0.5 W
USB	5V === 500mA
Frequency Response	25Hz - 150Hz
Impedance	3 Ω
Dimensions (W x H x D)	240 x 472.5 x 400 mm
Weight	13.6 kg
Operating Temperature	0°C - 45°C

6 Troubleshooting



Note

- Never remove the casing of the product.

To keep the warranty valid, never try to repair the product yourself.

If you have problems using this product, check the following points before you request service. If you still have a problem, get support at www.philips.com/support.

No power

- Ensure that the AC cord is properly connected.
- Ensure that there is power at the AC outlet.

Sound

- When the playback freezes and there is no sound in Wi-Fi mode, please check whether your home network is normal.

Distorted sound or echo.

- If you play audio from TV through this product, make sure that the TV is muted.

Wi-Fi

Wi-Fi Connection cannot be established.

- Check the availability of WLAN network on the router.
- Place the Wi-Fi router closer to the unit.
- Make sure the password is correct.
- Check the WLAN function or reboot the modem and Wi-Fi router.

Play-fi

Cannot discover the play-fi supported devices from the app.

- Make sure the device is connected to the Wi-Fi.

Cannot play play-fi music.

- Certain network service or contents available through the device may not be accessible in case the service provider terminates its service.
- When the first time set up is not successful, close the Philips Sound app powered by DTS Play-fi . Restart the app.
- When the speaker was set as Stereo Pairs or Surround Sound, the speaker need to be disconnected in the app before use separately.



Specifications are subject to change without notice. Please visit www.Philips.com/support for the latest updates and documents.

Philips and the Philips Shield Emblem are registered trademarks of Koninklijke Philips N.V. and are used under license.

This product has been manufactured by and is sold under the responsibility of MMD Hong Kong Holding Limited, or one of its affiliates, and MMD Hong Kong Holding Limited, is the warrantor in relation to this product.