

Laresar

Evo1 3 ROBOT VACUUM CLEANER QUICK START GUIDE

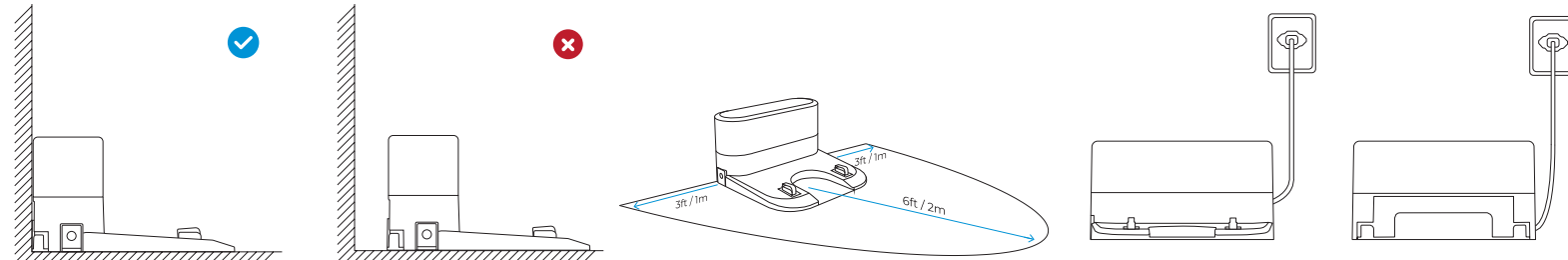


If you have any problem of this device,
please feel free to contact us:
support09@laresar.us



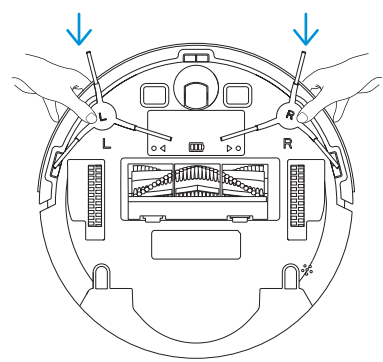
How to Use Your Evo1 3

01 Place Charging Dock and Power It

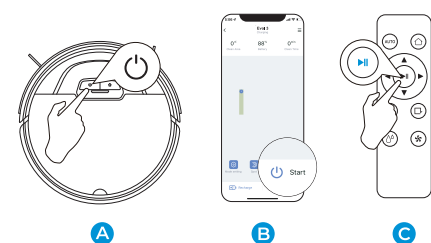


Note: Place the remaining wire into the trunking at the back of the Charging Dock.

02 Install the Side Brushes

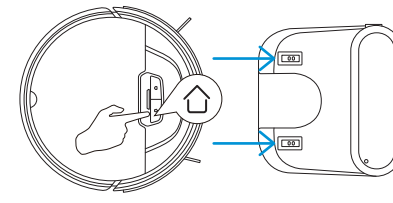


03 Start Cleaning



Press the power button on machine, remote control or app control to start cleaning.

04 Recharge Method



- A Automatically recharge after cleaning
- B Automatically recharge when battery power $\leq 15\%$
- C Manually recharge at any time

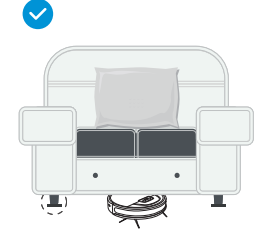
05 Attention



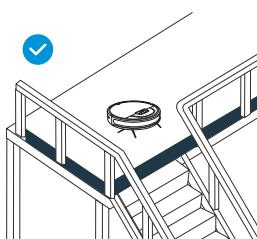
1. Power lines and other debris scattered on the ground may trip up the robot, please remove them.



2. Please clean the carpet tassels or work on short-haired rugs.



3. A gap of less than 8cm on the bottom of the furniture may catch the product. If you need to clean it, please remove the furniture.



4. A guardrail should be placed at the edge of the duplex to ensure the safe operation of the product.

APP Connection

APP Download



Scan the QR code below or search the APP named "Laresmart" in Google play or APP store.

Compatible with iOS 10.0 and higher.

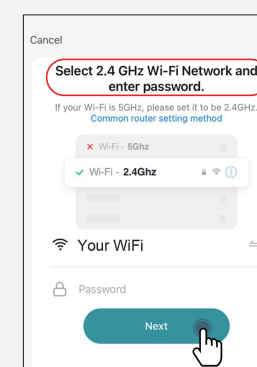
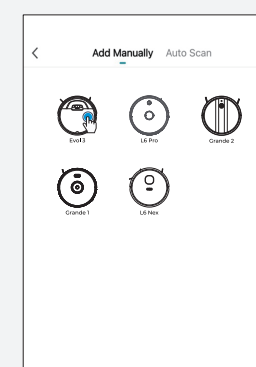
Compatible with Android 8.0 and higher.

Note: The router, mobile phone, and robot vacuum cleaner should be as close as possible to ensure smooth connection.

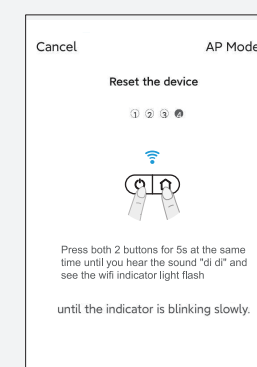
Add Evo1 3 device

Connect to 2.4GHz Wi-Fi

Reset Wi-Fi



Note: Net work should be 2.4 GHz. Make sure Wi-Fi account and password are completely correct.



Connect "SmartLife-XXX X" hotspot

Add the device

Successfully connected

