

# **LEFTON<sup>®</sup>**

## INSTALLATION MANUAL

### **Stainless Steel Farmhouse Kitchen Sink**

**FS2501  
( Undermount Installation)**



# Congratulations on the purchase of your new Lefton Kitchen Sink!

Please keep the box and packaging materials until your product is completely installed. If you have any questions, require technical assistance, or have any problems with your product, please get in touch with our Customer Service at [customer@Leftonhome.com](mailto:customer@Leftonhome.com).

## Tools Required



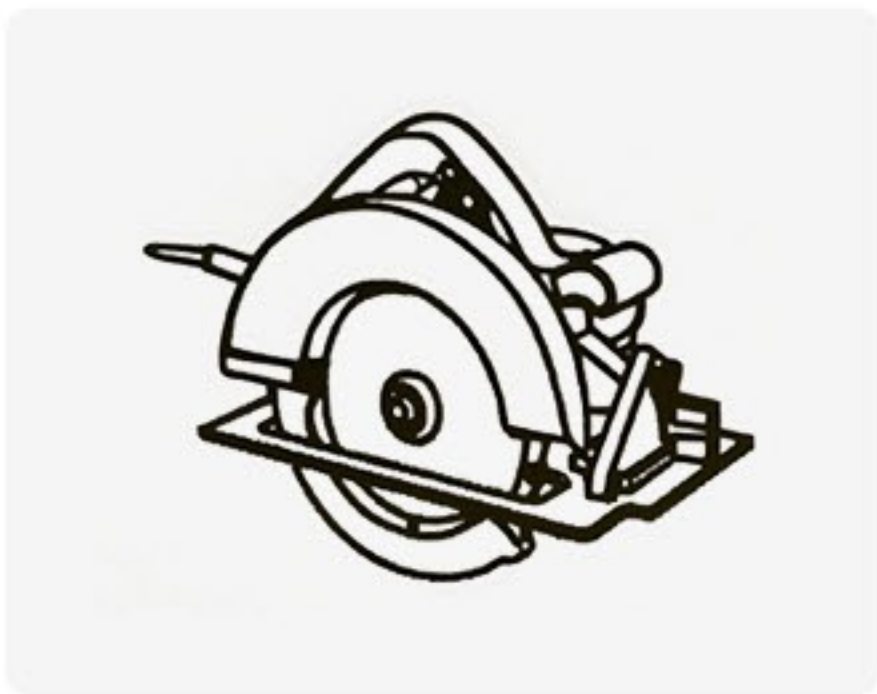
Safety Goggles



Drill



Epoxy



Saw



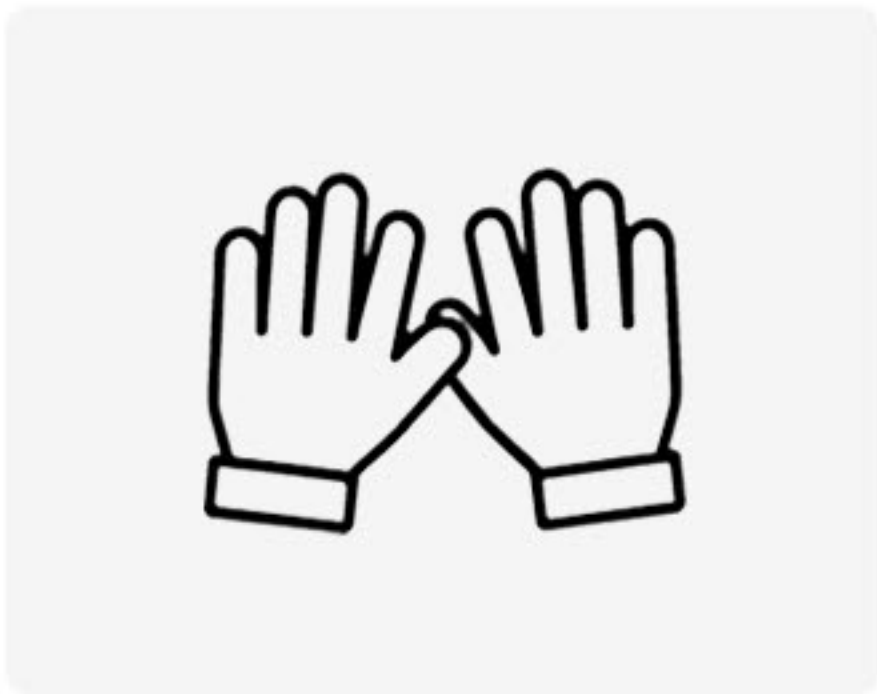
Adjustable Wrench



Tape Measure



Pencil



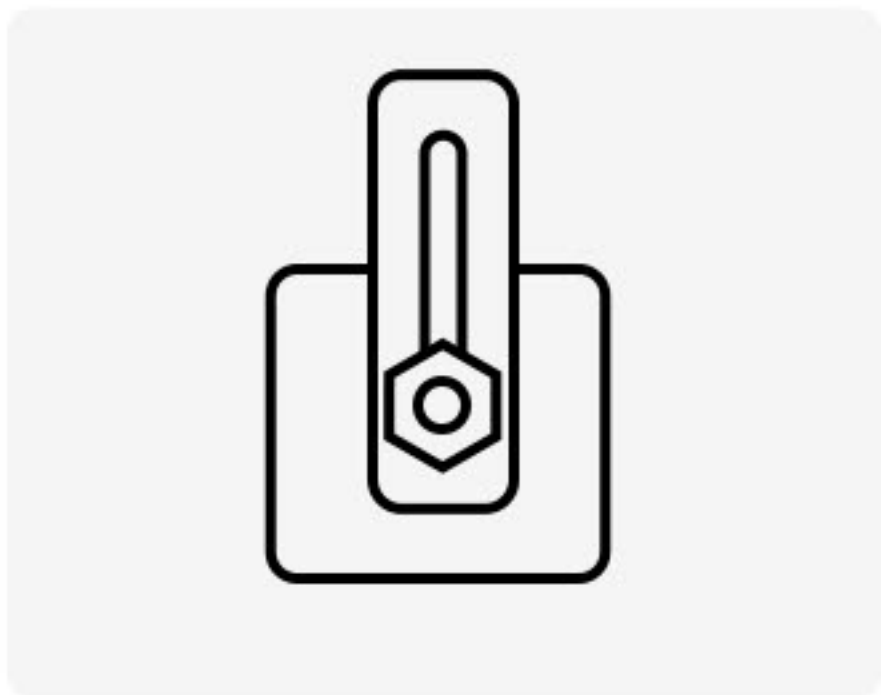
Gloves



Phillips Screwdriver



Pipe Tape



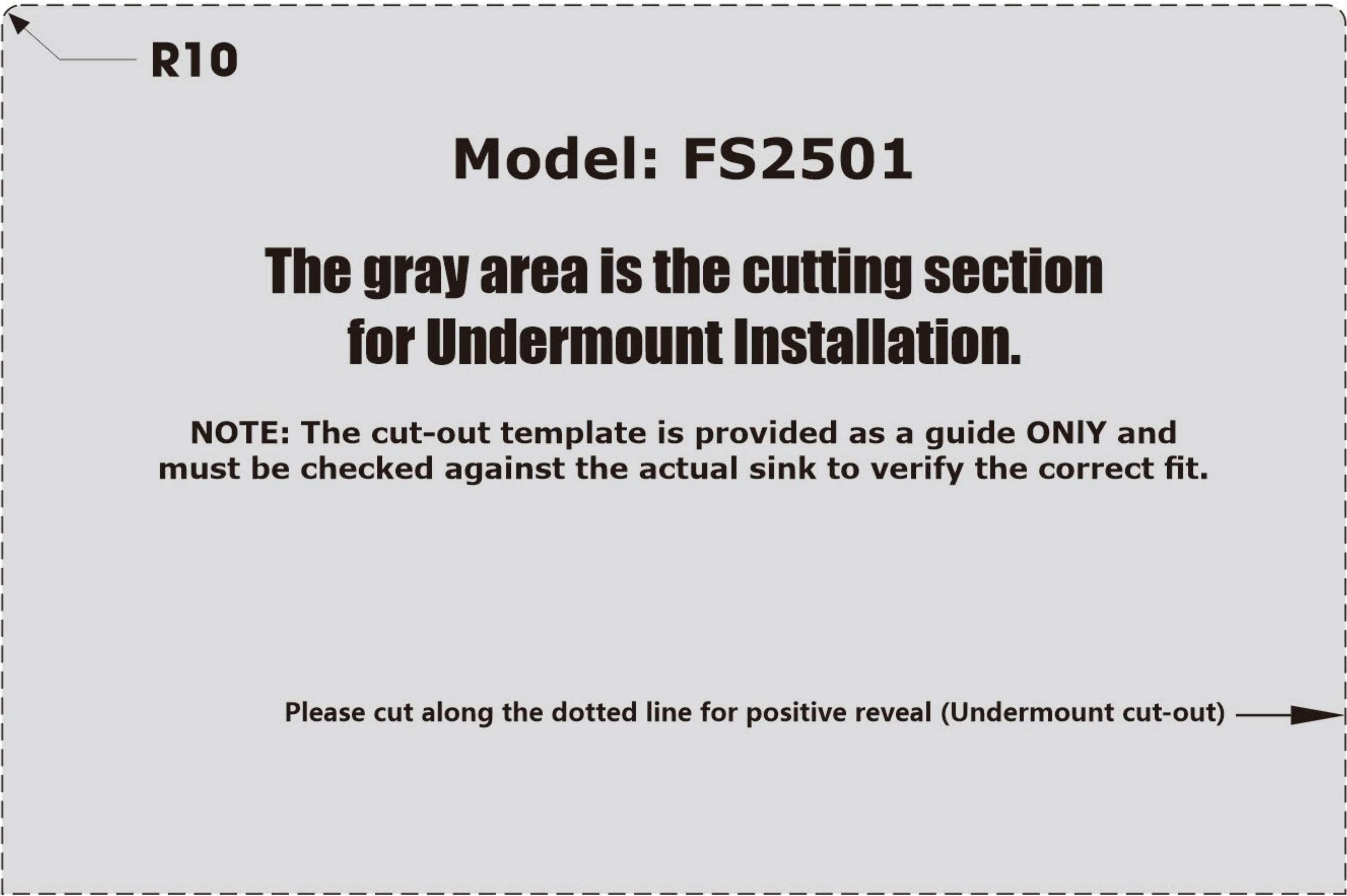
Mounting Brackets

**NOTE:** Specialized tools may be necessary to install LEFTON Stainless Steel Kitchen sinks with countertop materials other than wood, marble or granite.



# Cut-Out Template

FS2501



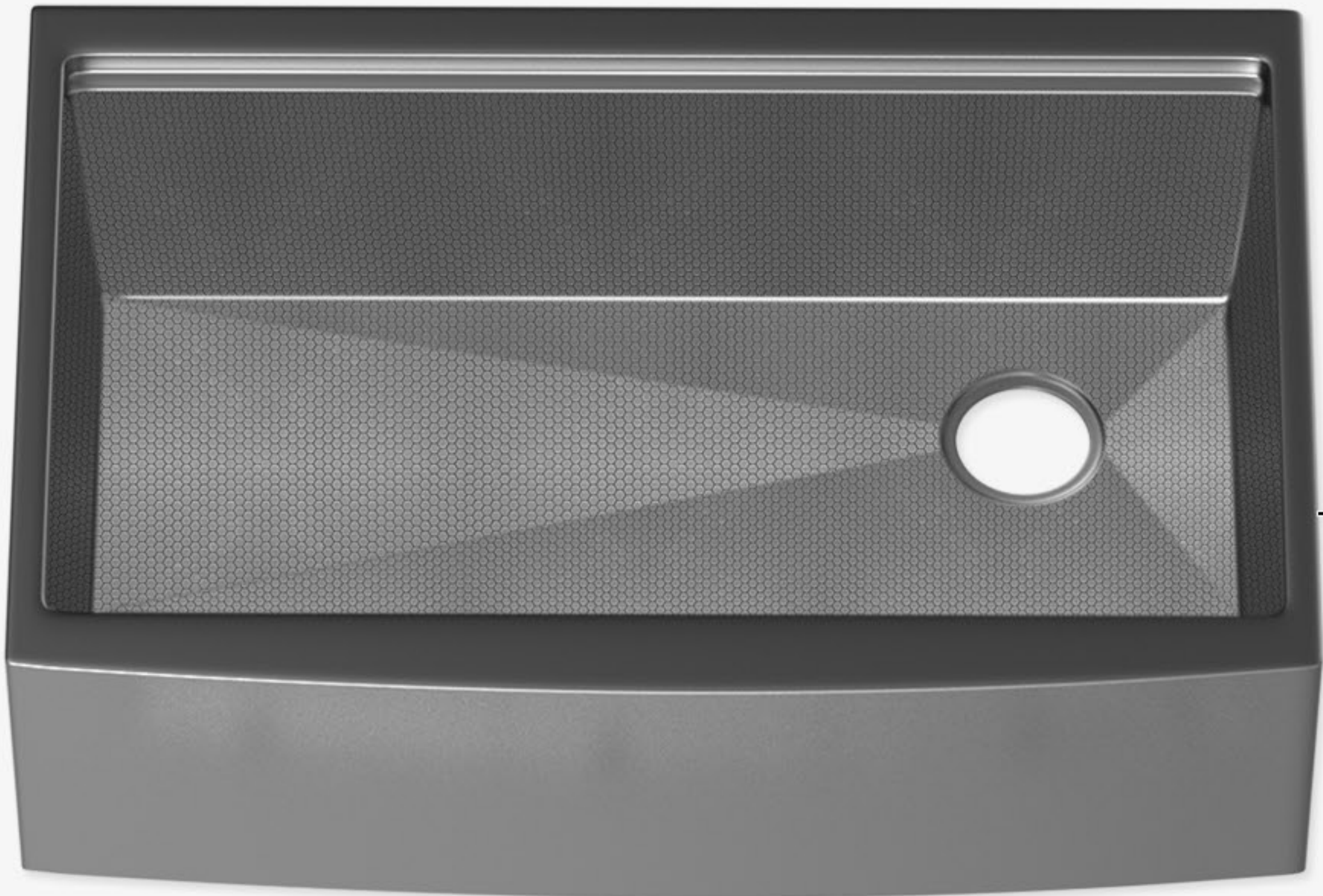
30 5/8" (778mm)

20" (510mm)

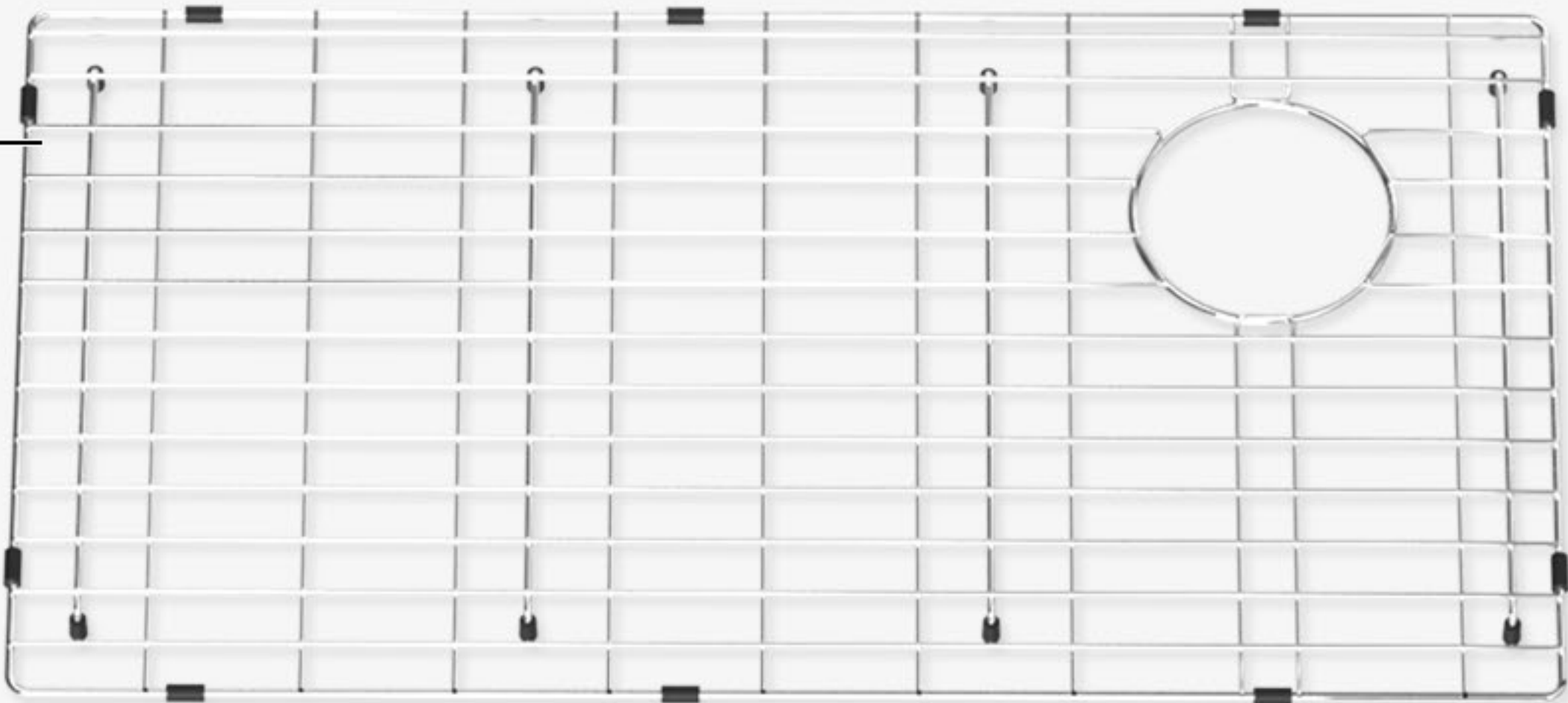
**NOTE:** Cut-out templates for sinks can be downloaded from our website.



# Parts List



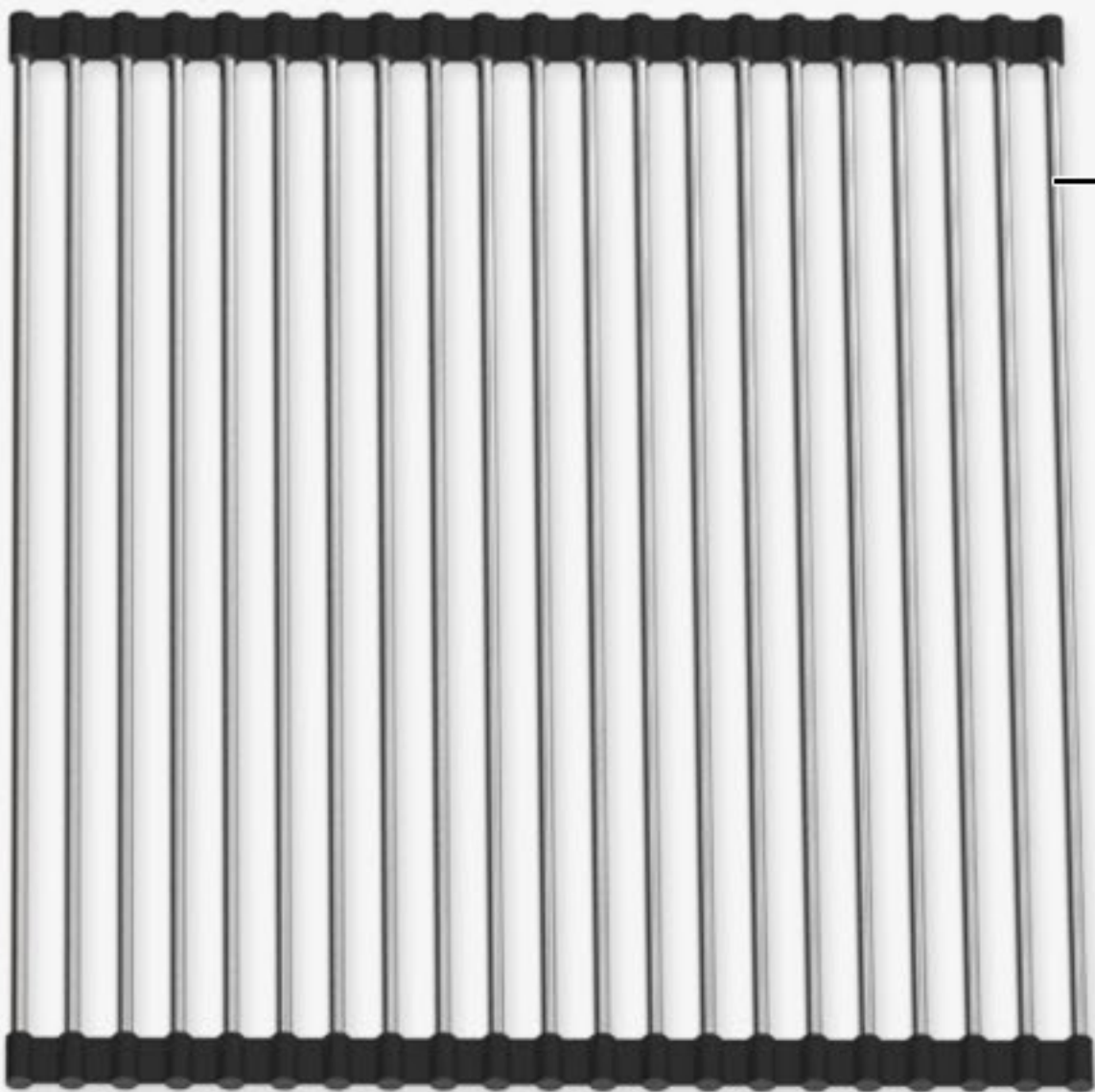
Sink Bowl



GRID



Cutting Board



Roll Up Dish Drying Rack

Drain Hole Cover



Screw



Strainer Basket



Strainer



White Gasket



Drain Housing



Rubber Gasket





## Undermount Installation (Flush/Zero Reveal)

### Step 1. Position template

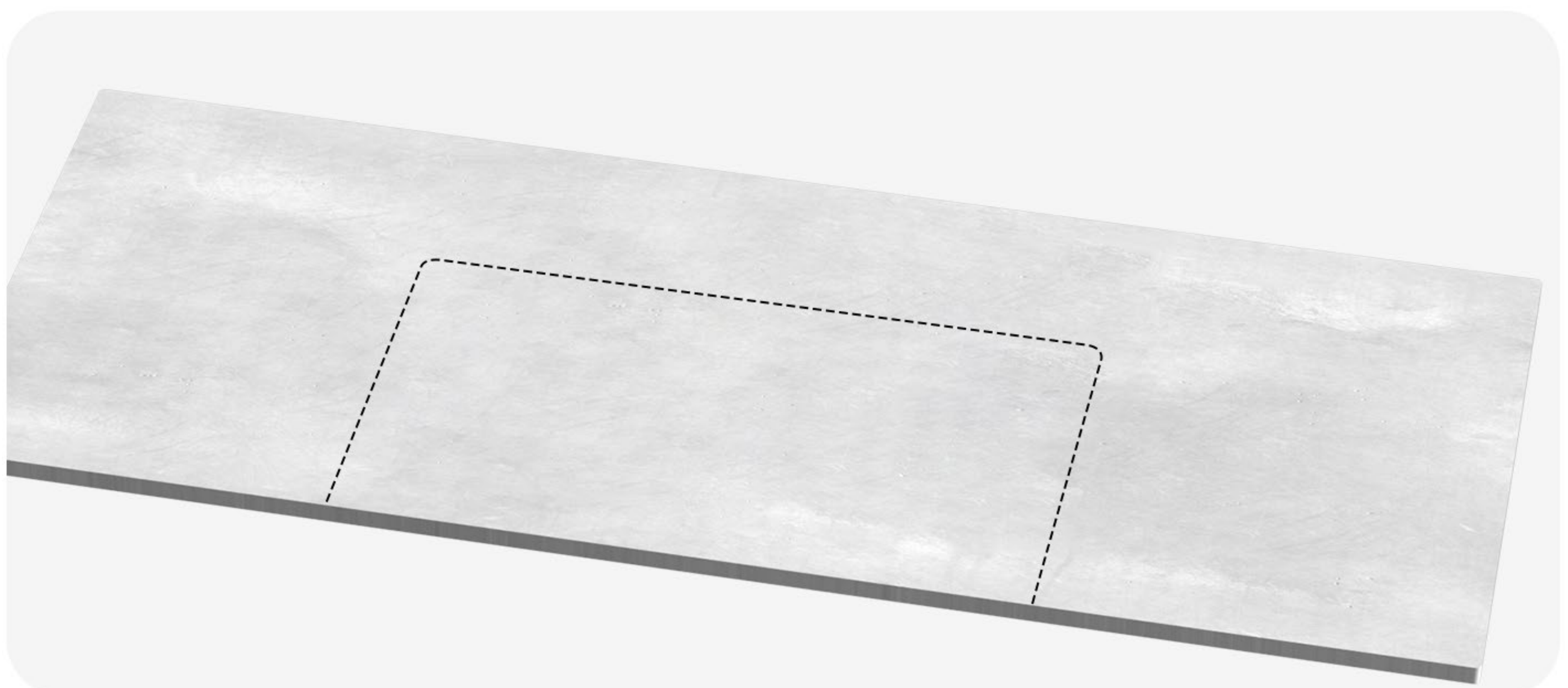
- Check the cut-out template against the actual sink to ensure a proper sized cut-out.
- Place the cut-out template in the desired location on the countertop.



**NOTE:** Make sure clearance is suitable for backsplash, faucet and plumbing for the sink.

### Step 2. Trace Template

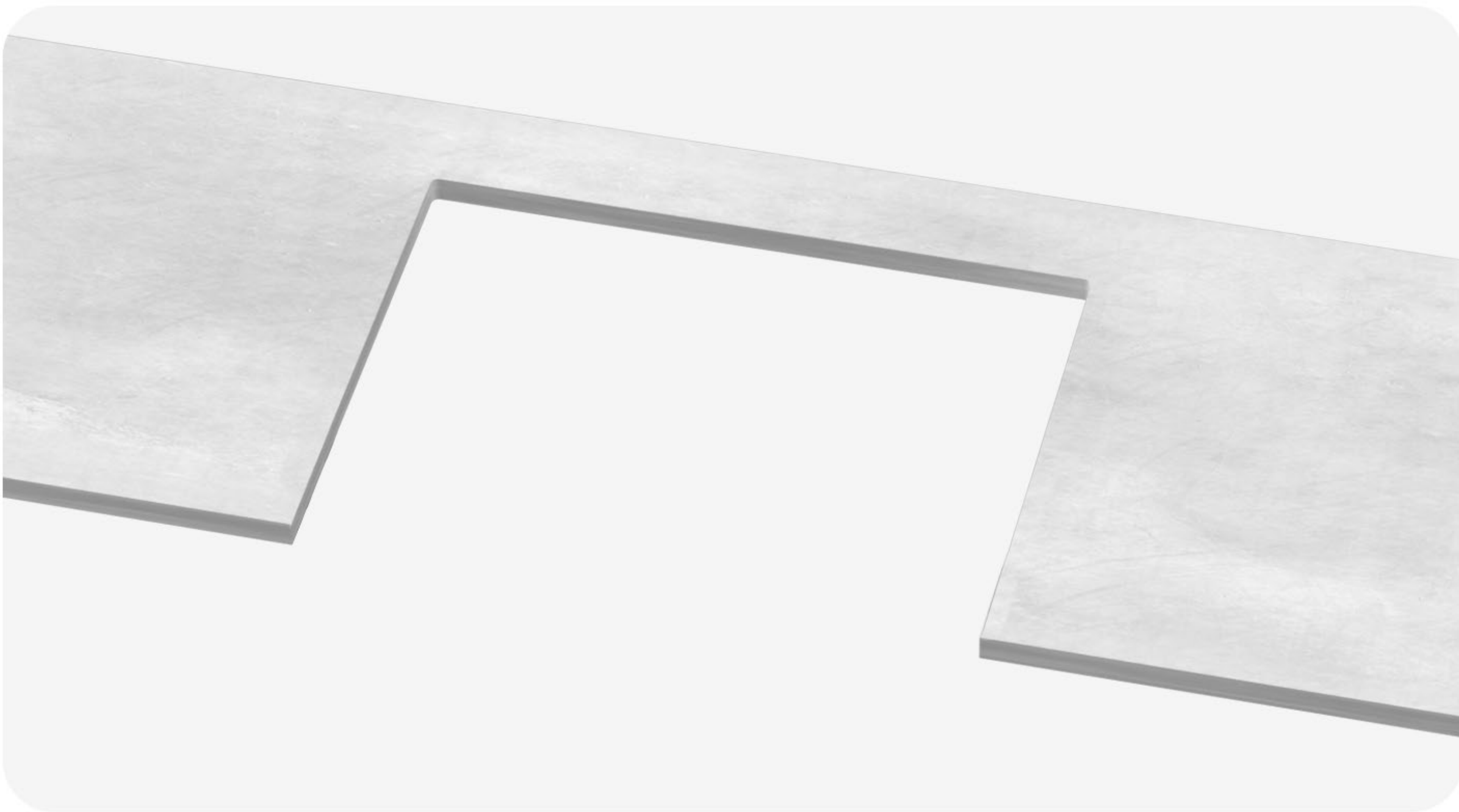
- Trace the template on the countertop with a pencil.
- The gray area is the cutting section.





### Step 3. Cut countertop

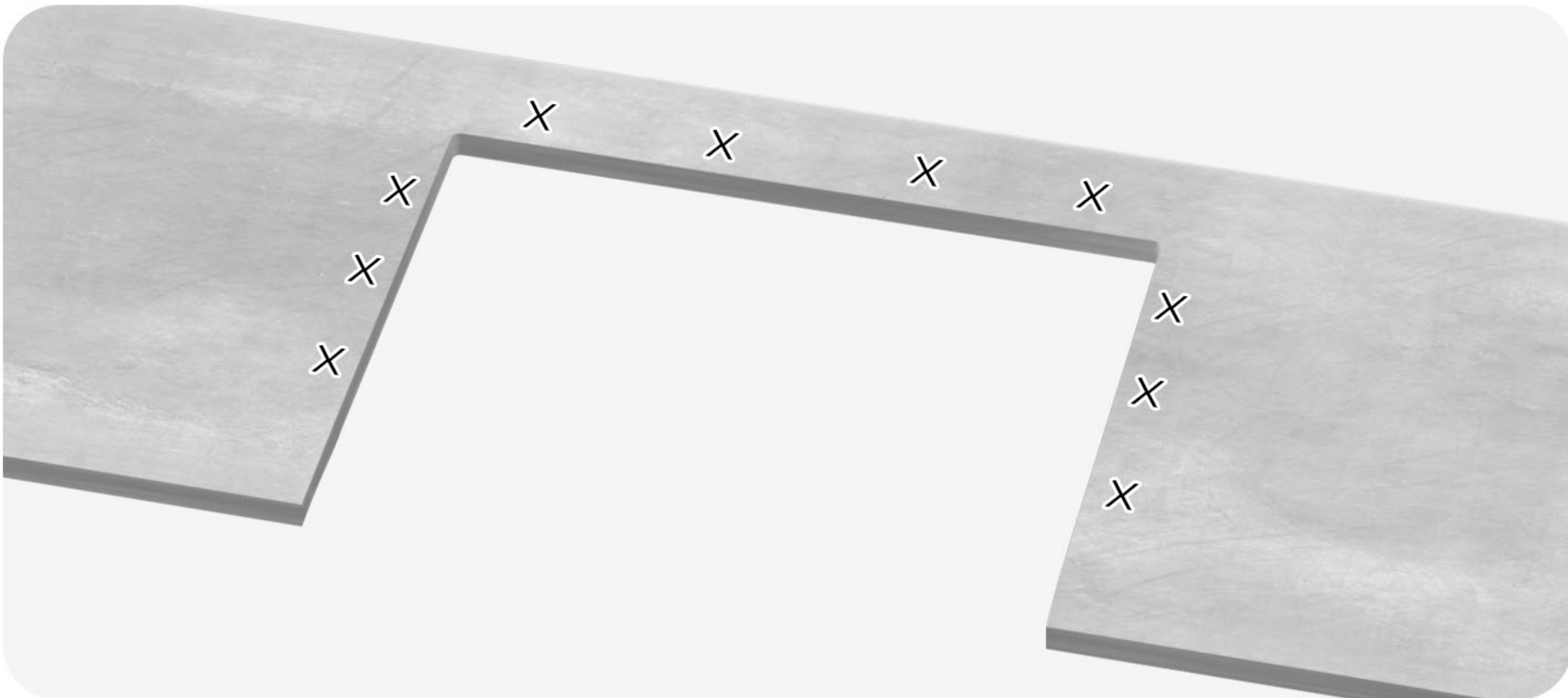
- Cut the opening in the countertop by carefully following the traced line.



**NOTE:** Please use the appropriate saw that best fits your countertop material.

### Step 4. Position Mounting Brackets

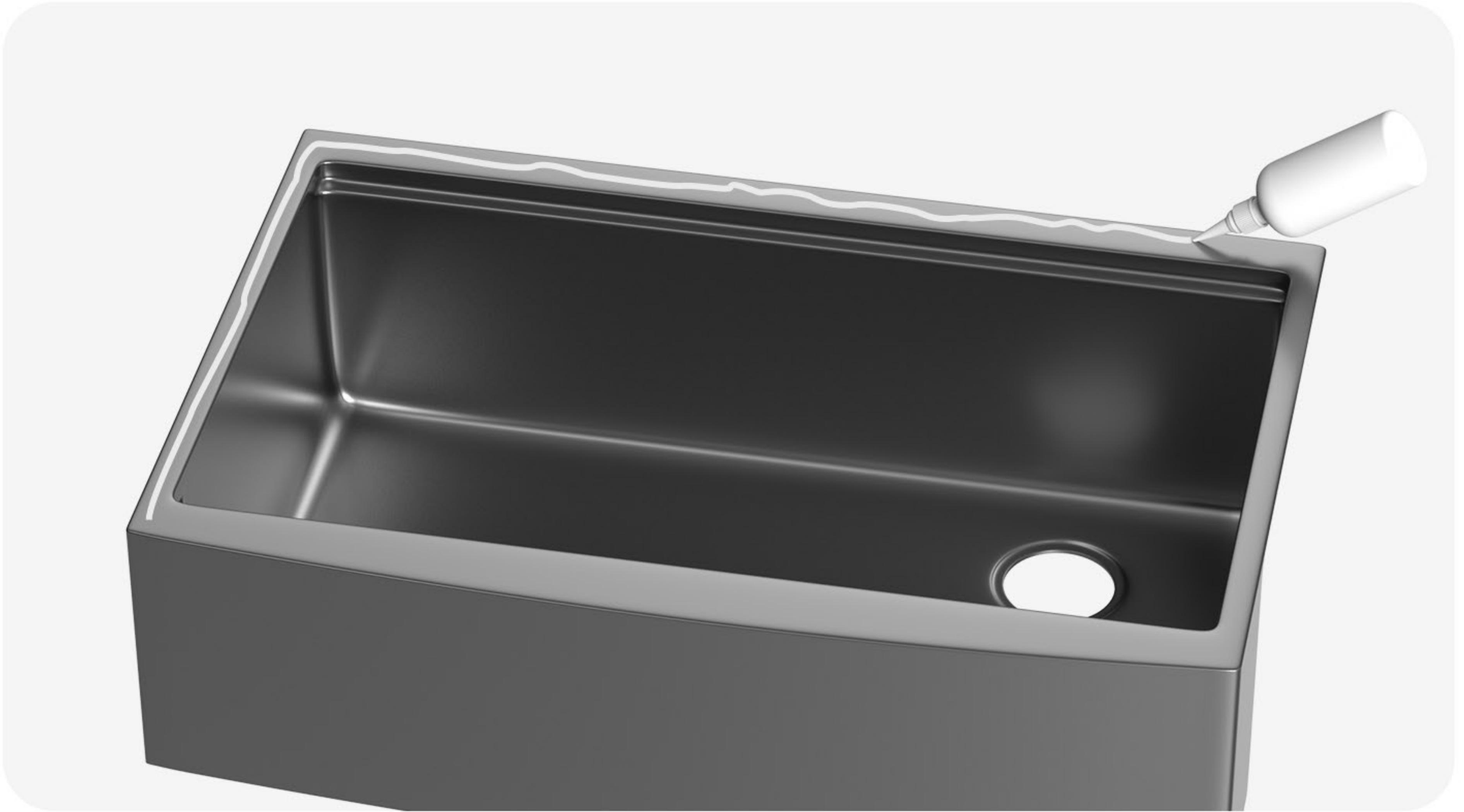
- Flip the countertop so the underside is facing up.
- Determine locations for mounting brackets.
- Number of mounting brackets: 10 pcs.





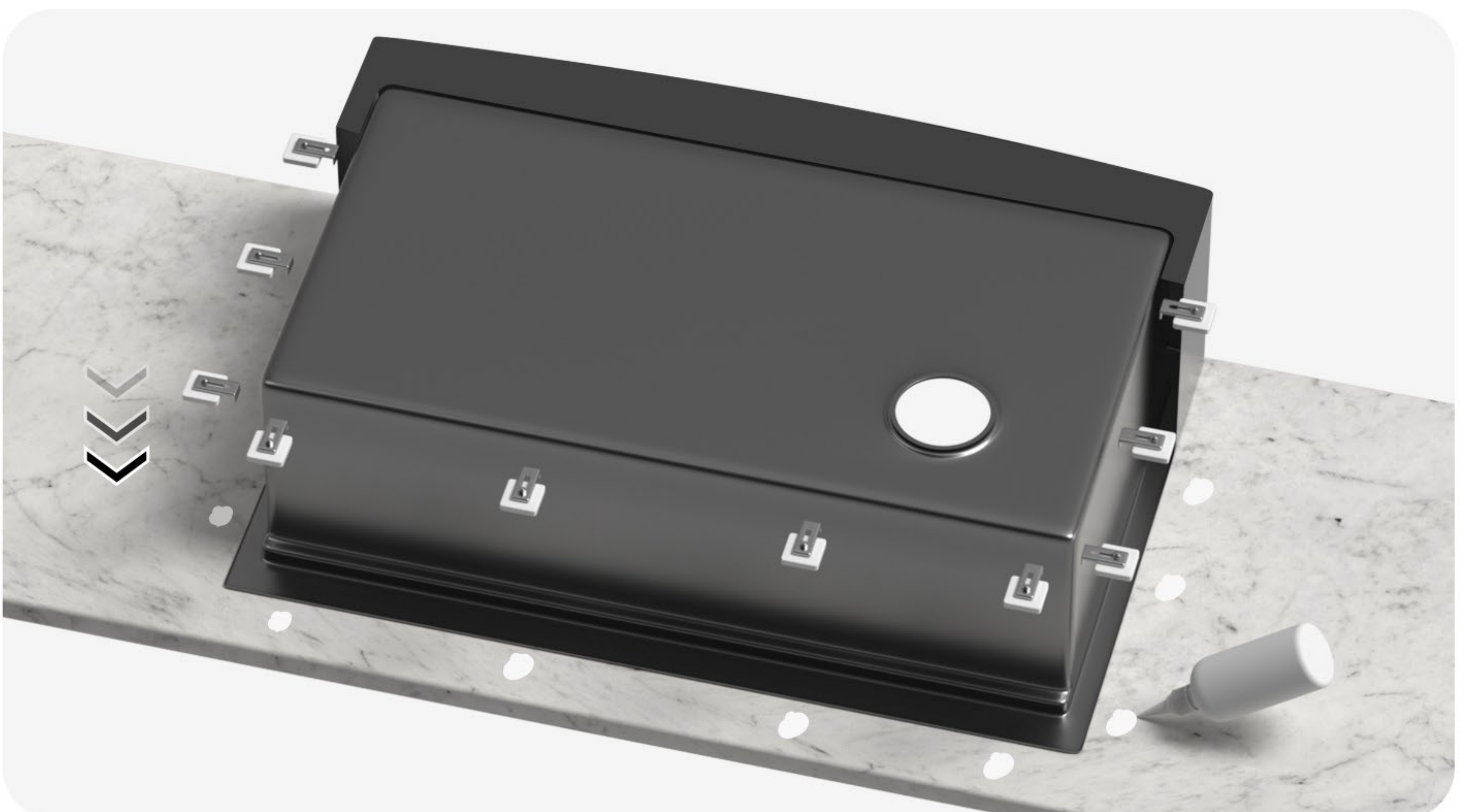
## Step 5. Secure the sink to the countertop

- Clean the underside of the countertop and the top rim of the sink.
- Use a bead of epoxy (or preferred adhesive) around the rim of the sink and then align the sink on the counter.
- Press the sink firmly and remove excess epoxy from the inside lip.



## Step 6. Attach Mounting Brackets

- Use a bead of epoxy (or preferred adhesive) on the bracket locations.
- Attach mounting brackets to secure the sink.





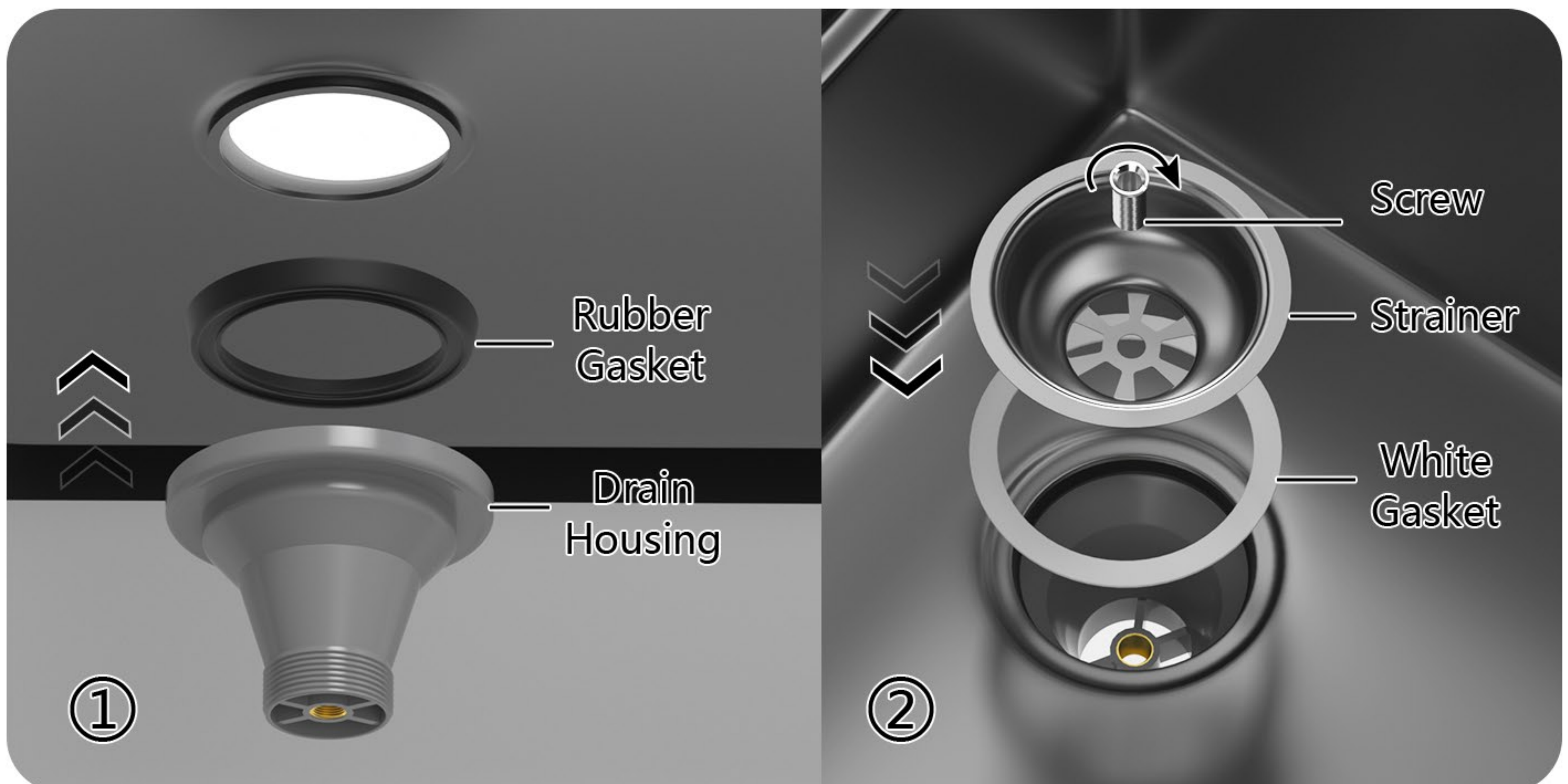
## Step 7. Tighten Mounting Brackets

- After the glue is completely cured, use a wrench to tighten brackets evenly.
- Turn the countertop and sink face up.



## Step 8. Install the Strainer

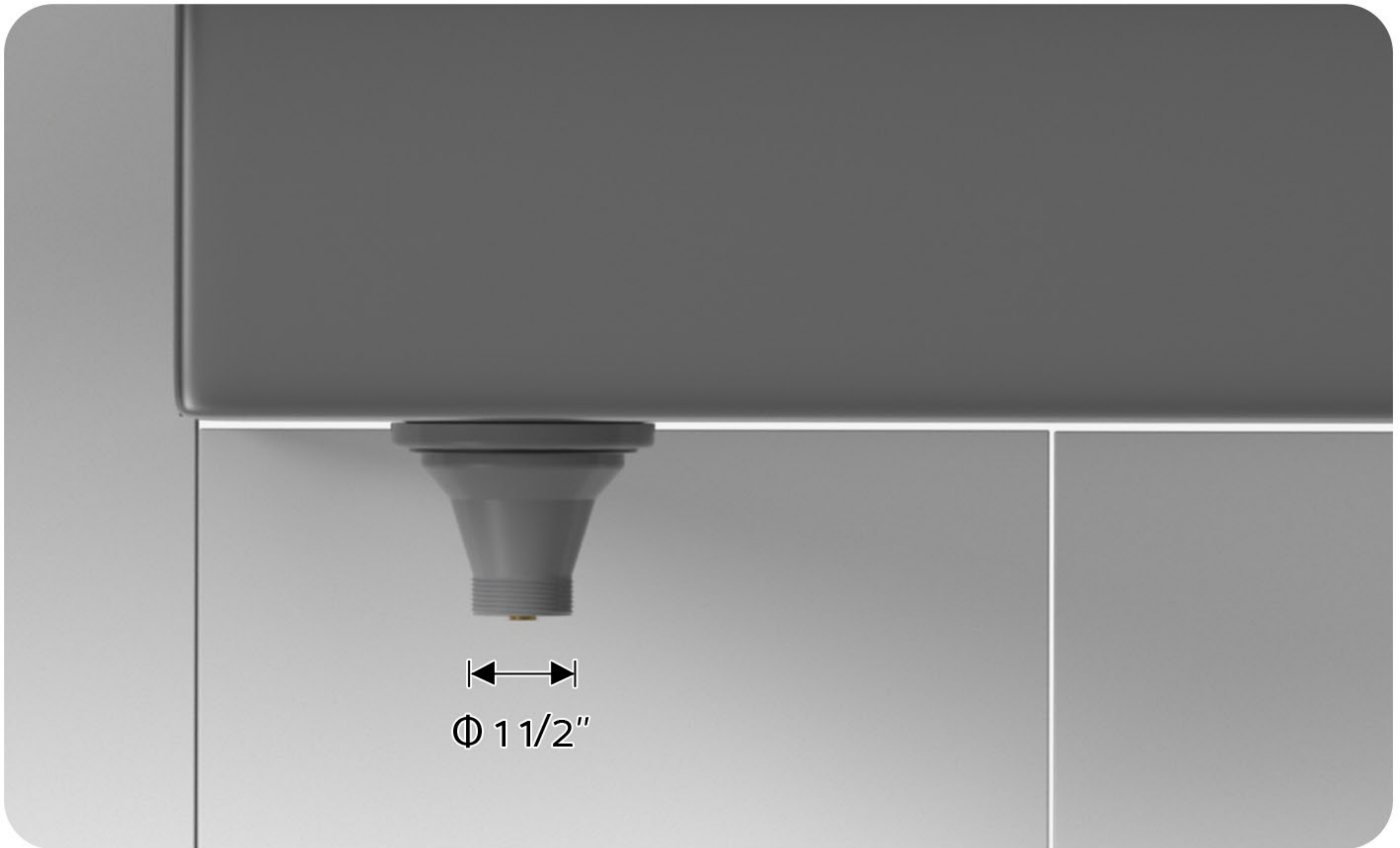
- From underneath, slip on the rubber gasket and drain housing.
- Place the screw, strainer and white gasket onto the sink's drain hole, and tighten screw clockwise.





## Step 9. Install the drain pipe

- Connect the drain pipe. (The port diameter is 1 1/2")



## Step 10. Test for leaks

- Open the faucet and check for leaks in the sink drain pipe.





# Maintenance & Warranty

## Kitchen Sink Maintenance

Regular maintenance is key to keeping your sink in top condition.

- **Clean Regularly**

Clean your sink regularly with warm, soapy water.  
This helps to remove daily grime and prevents buildup.

- **Rinse After Cleaning**

After using any cleaning products, ensure that you rinse the sink thoroughly.  
This prevents any residue from affecting the surface.

- **Wipe Dry**

Use a soft cloth to wipe the sink surface after rinsing.  
This removes any liquid residue and prevents water spots.

- **Prevent Damage**

Avoid cutting food directly on the surface of the sink. Use a cutting board to protect your sink. Do not leave sharp objects on the surface of the sink for extended periods. These can cause scratches or other damage.

- **Avoid Abrasive Products**

Do not use abrasive cleaning products, sanding tools, steel wool, or bleaching products. These can severely damage the surface of your stainless steel sink.

## Kitchen Sink Warranty

5-year Limited (residential) and 2-year Limited (commercial) on the sink bowl.  
5-year Limited (residential) and 2-year Limited (commercial) on hardware and drain assembly.

**In requesting warranty service, please be ready to provide:**

1. Proof of purchase
2. The item number & Qty of the defective item(s)
3. A complete description of the problem

**For more information, please check our website or contact us.**

**LEFTON<sup>®</sup>**

[www.leftonhome.com](http://www.leftonhome.com)

