



Linear Drain Foam Pan Installation Guide

STEP 1:

Clean and level substrate (follow all ANSI 108.01 guidelines for substrate prep)

You must begin with a dry and structurally sound subfloor. If water damage, rotting, or any other structural defects are present, you **MUST** repair it prior to installing your new Everbilt WaterShield shower base. A clean and level subfloor is required for a successful installation. After cleaning the subfloor, use a level to check the subfloor. The subfloor **MUST** be level so that the Everbilt WaterShield shower base will drain correctly.



STEP 2:

Cut the drain pipe 7/8" to 1" below subfloor by using an internal PVC pipe cutter drill bit.



STEP 3:

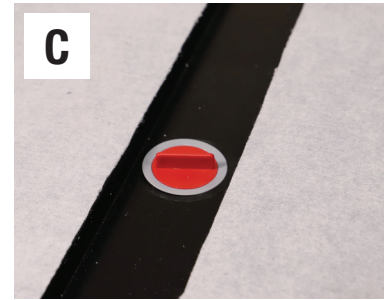
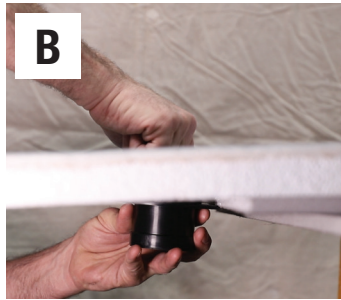
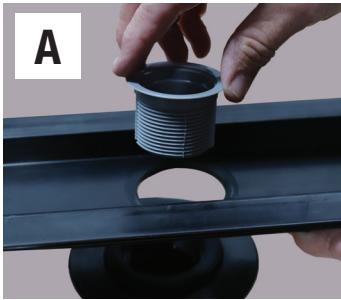
Cut 5" hole centered on drain pipe. The **hub adapter** must sit 1/16" below substrate surface. Ensure the drain pipe is properly secure.



STEP 4:

Follow steps A-C for DRAIN ASSEMBLY

- (A) Insert **threaded drain tube** down through hole in trough.
- (B) Place the down tube with rubber gasket under the trough and screw on to the **threaded drain tube**. Use **red down tube installation tightening tool** to tighten from the top.
- (C) Leave **red tightening tool** in place until ready for tile.



STEP 5:

Dry fit pan and drain fitting to ensure proper fit to framing and walls as well as ensure the drain is centered.



STEP 6:

Mix an ANSI certified modified mortar suitable for the subfloor as per manufacturer specification. To assure full coverage, use a 1/4" square notched trowel and apply mortar to the floor and flat trowel the backside of the Everbilt WaterShield shower base. Assure that the mortar is troweled in the same direction. Set the Everbilt WaterShield shower base into place. Ensuring level perimeter on 4-sided slope pan (envelope design) or level back and drain side on a single slope pan (end and off-set drain style).



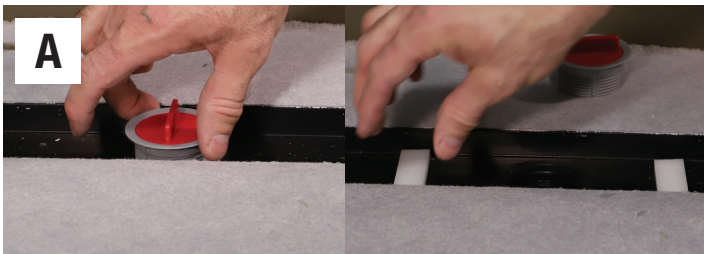
STEP 7:

Place ample amount of the Multipurpose Construction Adhesive between the shower pan and the wall and curb. Thinset may also be used.



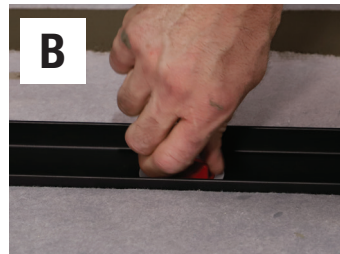
STEP 8:

- (A) Using the **red tightening tool**, loosen and back out (remove) the **threaded down tube**. Place the appropriate **self-adhesive adjustment spacers** into the **trough**. Dry fit the **grate cradle** and adjust **spacers** or combination of **spacers** to set the appropriate height according to the tile thickness.
- (B) Once height and **spacers** are set, screw the **threaded drain tube** through the **grate cradle** and **trough** and tighten down firmly.
- (C) Remove **red tightening tool** and install **strainer**.
- (D/E) Install **drain grate** using the appropriate **drain grate supporting clips**.



Threaded Down Tube

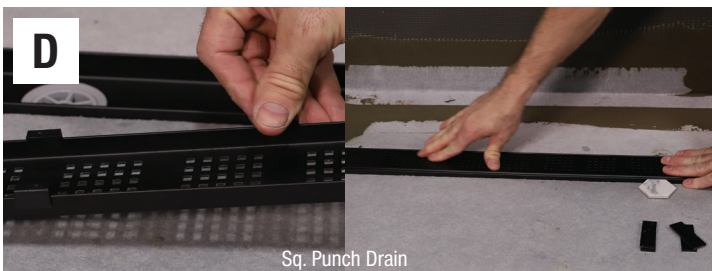
Spacers



Grate Cradle and Trough

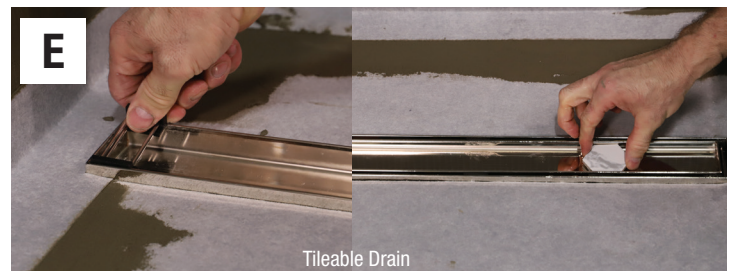


Strainer



Sq. Punch Drain

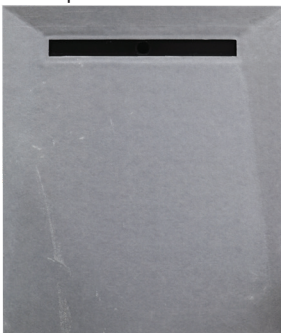
Drain Grate Supporting Clips



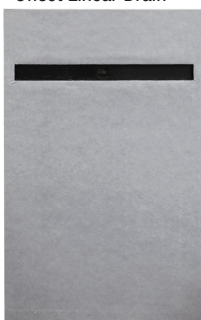
Tileable Drain

Drain Grate Supporting Clips

Envelope Linear Drain



Offset Linear Drain



Top Linear Drain



Drain Gate Tileable Clip



Down Tube Insert Tool



Self Adhesive Sq. Punch Support Clips



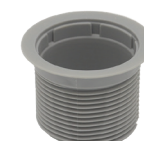
Self Adhesive Sq. Punch Support Clips



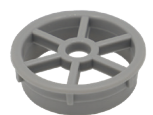
Rubber Gasket Down Tube



Strainer Removal Tool



Threaded Drain Tube



Strainer