

PHILIPS



4K QD MiniLED
Ambilight TV

The Xtra

215 cm (85") Ambilight TV
P5 Perfect Picture Engine
TITAN OS smart platform
Dolby Vision & Dolby Atmos



85PML9009

More colour. More detail. More thrills.

The Xtra 4K QD MiniLED Ambilight TV

Play with everything you've got. Watch from the edge of your seat. The Xtra gives you jaw-dropping detail and colour, great sound — and immersive Ambilight. From films to sports and games, nights in have never been bigger.

The Xtra. 4K MiniLED Ambilight TV.

- Immerse yourself in what you love. Ambilight TV.
- Whatever the source, always perfection. Philips P5 engine.
- Quantum Dot technology for incredible colour and contrast.
- Find it easily. TITAN OS.

Epic, whatever you watch and play

- Cinematic vision and sound. Dolby Vision and Dolby Atmos.
- Supports all major HDR formats
- Epic gaming. 120 Hz, ultra-low lag, VRR, FreeSync.

Sustainable materials. Easy control.

- Remote made from recycled plastic. Responsible packaging
- Easily connect to smart home networks and voice assistants
- Philips Wireless Home System powered by DTS Play-Fi.
- Compatible with Matter and Control4

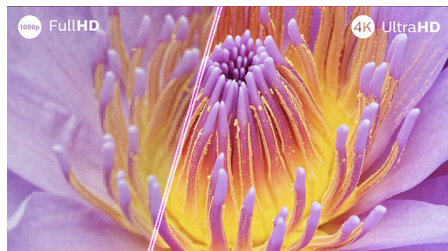
The Xtra

4K QD MiniLED Ambilight TV

85PML9009/12

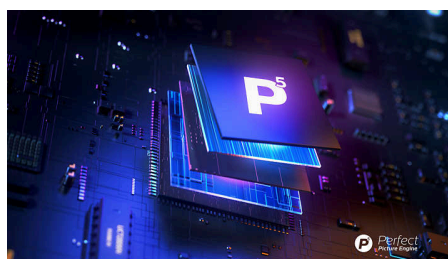
Highlights

Ambilight TV



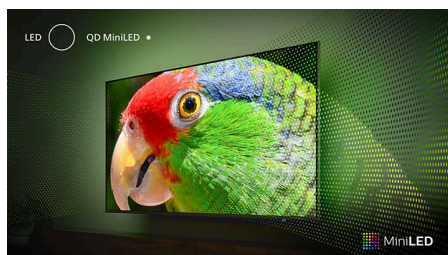
Ambilight TVs are the only TVs with integrated LED lights on the back that react to what you watch, immersing you in a halo of colourful light. It changes everything: your TV seems bigger and you'll be drawn deeper into your favourite sports, films, music and games.

P5 Perfect Picture Engine



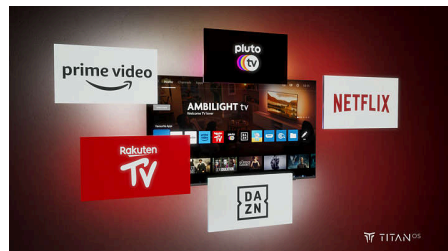
The Philips P5 engine delivers a picture as brilliant as the content you love. Details have noticeably more depth. Colours are vivid, while skin tones look natural. Contrast is so crisp you'll feel every detail. Motion is perfectly smooth.

Quantum Dot Mini-LED



Bolder colours. Crisper whites. Deeper blacks. The Xtra's Quantum Dot Mini-LED technology gives you bright, detailed picture with pin-sharp contrast. You'll see more colours than ever before, and this Ambilight TV is compatible with all major HDR formats, so you get more detail in dark and bright areas too.

TITAN OS smart platform



It's quick and easy to find what you love with our TITAN OS smart TV platform. Enjoying a series? You can continue watching straight from the home screen. If you're looking for something new, you can browse categories like action or drama and see suggestions from the top streaming services, all in one place.

Dolby Vision & Dolby Atmos



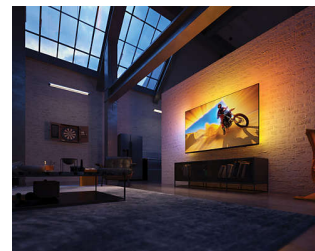
With Dolby Vision and Dolby Atmos on board, your films, shows and games look and sound incredible. See the picture the director wanted you to see. No more disappointing scenes that are too dark to make out! Hear every word clearly. Experience sound effects like they're really happening around you.

Epic gaming



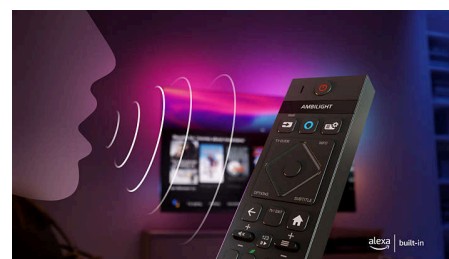
Play without limits and immerse in the QD MiniLED's incredible realism! HDMI 2.1, a blazing-fast 120 Hz native refresh rate, and ultra-low input lag bring fluid, responsive gameplay, super-smooth natural motion and great-looking graphics. Ambilight's gaming mode brings even bigger thrills and, if you're gaming on a PC, you can enjoy 144 Hz VRR via HDMI.

Sustainable materials



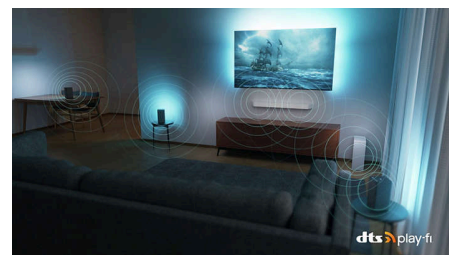
The Xtra's metal stand looks sleek, and you can use Ambilight as instant mood lighting when the screen is off. The TV remote is made from recycled plastic, our packaging uses FSC-certified recycled cardboard and the inserts are printed on recycled paper.

Seamless control



Seamless compatibility with Matter and Control4 means you can easily integrate this 4K Ambilight TV into your existing smart home network. You can also use the TV remote to control your satellite or cable box or wake the TV's built-in Alexa, and the TV is compatible with Google smart speakers too.

DTS Play-Fi compatible



Philips Wireless Home System powered by DTS Play-Fi lets you connect to compatible soundbars and wireless speakers around your home in seconds. Listen to films in the kitchen. Play music anywhere. You can even create a home-cinema surround-sound system using your Ambilight TV as a central speaker.

Specifications

Ambilight

Ambilight Features: Wall colour adaptive, Lounge light mode, Ambilight Music, AmbiSleep, Sunrise Alarm, Works with Philips Wireless Home Speakers, Ambilight FTI Animation

Ambilight Version: 3 sided

Picture/Display

Diagonal screen size (inch): 85 inch

Diagonal screen size (metric): 215 cm

Display: 4K UHD MiniLED

Panel resolution: 3840 x 2160

Native refresh rate: 144 Hz

Picture engine: P5 Perfect Picture Engine

Display input resolution

Resolution-Refresh rate: 576 p - 50 Hz, 640 x 480

- 60 Hz, 720 p - 50 Hz, 60 Hz, 1920 x 1080p

- 24/25/30/50/ 60/100/120/144Hz, 2560 x 1440

- 60/120/144Hz, 3840 x 2160p -

24/25/30/50/60/100/120/144 Hz

Tuner/Reception/Transmission

Digital TV: DVB-T/T2/T2-HD/C/S/S2

TV Programme guide*: 8-day Electronic Programme Guide

Teletext: 1000 page Hypertext

Smart TV

OS: TITAN OS

Memory size (Flash)*: 8 GB

Smart TV app*: Netflix, YouTube, Amazon Prime Video, TITAN channel, NFT*, STB Controller App

Smart TV Features

User Interaction: Screen mirroring

Interactive TV: HbbTV

Voice assistant*: Amazon Alexa built-in, RC with Mic.

Smart Home experience: Works with Amazon Alexa, Works with Google assistant, MATTER, Control4

Multimedia Applications

Video Playback Formats: AVI, MKV, HEVC, H.264/MPEG-4 AVC, MPEG1, MPEG2, MPEG4, VP9, HEVC (H.265), AV1

Music Playback Formats: MP3, WAV, AAC, FLAC

Subtitles Formats Support: SRT, SMI, SSA, SUB, ASS, TXT

Picture Playback Formats: JPEG, GIF, PNG, BMP, HEIF

Sound

Output power (RMS): 50 W

Speaker configuration: 2 x 10 W mid-high speaker, 30 W subwoofer

Codec: Dolby Digital MS12 V2.6.2, Dolby Atmos®, DTS:X

Sound Enhancement: Dolby Bass Enhancement, Clear Dialogue, A.I. Sound, A.I. EQ, Dolby Volume Leveller, Night mode, Sound Personalisation

Specifications

Connectivity

Number of HDMI connections: 4

HDMI features: 4K, Audio Return Channel

EasyLink (HDMI-CEC): Remote control pass-through, System audio control, System standby,

One touch play

Number of USBs: 2

Wireless connection: Wi-Fi 802.11ac, 2 x 2, Dual band, Bluetooth 5.2

HDCP 2.3: Yes on all HDMI

HDMI ARC: Yes on HDMI2

HDMI 2.1 features: eARC on HDMI 2,

eARC/VRR/ALLM supported

EasyLink 2.0: External setting via TV UI, HDMI-CEC for Philips TV/SB

Supported HDMI video features

Gaming: ALLM, HDMI VRR, AMD FreeSync Premium

HDR: Dolby Vision, HDR10, HDR10+ Compatible, HLG

HDMI 1/2/3/4: Up to 48 Gbps, 4K x 2K 144 Hz 12 bits 4:2:2, HDR

EU Energy card

EPREL registration numbers: 1943952

Energy class for SDR: F

On mode power demand for SDR:

154 kWh/1000 h

Energy class for HDR: G

On mode power demand for HDR:

387 kWh/1000 h

Off mode power consumption: n.a

Networked standby mode: 2.0 W

Panel technology used: LED LCD

Power

Mains power: LED LCD

Standby power consumption: less than 0.5 W

Power Saving Features: Auto switch-off timer, Picture mute (for radio), Eco mode, Light sensor

Accessories

Included accessories: Remote Control, 2 x AAA Batteries, Tabletop stand, Power cord, Quick start guide, Legal and safety brochure

Design

Colours of TV: Anthracite grey bezel

Stand design: Anthracite grey arch stands

Dimensions

Wall-mount compatible: 600 x 400 mm

TV without stand (W x H x D):

1894 x 1100 x 96 mm

TV with stand (W x H x D):

1894 x 1158 x 397 mm

Package carton (W x H x D):

2080 x 1250 x 245 mm

Weight of TV without stand: 49.0 kg

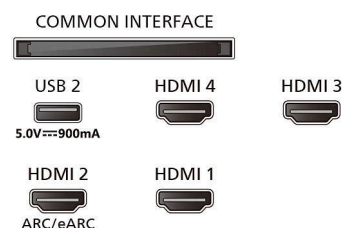
Weight of TV with stand: 50.0 kg

Weight incl. packaging: 60.0 kg



Connections

Side



Bottom



- * This television contains lead only in certain parts or components where no technology alternatives exist in accordance with existing exemption clauses under the RoHS Directive.
- * The TV supports DVB reception for 'Free to air' broadcast. Specific DVB operators may not be supported. An up-to-date list can be found in the FAQ section of the Philips support website. For some operators Conditional Access and subscription are required. Contact your operator for more information.
- * Smart TV app availability varies by TV model and country. For more details, please visit: www.philips.com/smarttv.
- * Philips TV Remote app and related functionalities vary by TV model, operator and country, as well as smart device model and OS. For more details, please visit: www.philips.com/TVRemoteapp.
- * EPG and actual visibility (up to 8 days) is country- and operator-dependent.
- * Netflix subscription required. Subject to terms on <https://www.netflix.com>
- * Amazon Prime is available in selected languages and countries.
- * Amazon, Alexa and all related logos are trademarks of Amazon.com, Inc. or its affiliates. Amazon Alexa is available in selected languages and countries.
- * Over-the-top media services button on the remote control will be different in each country. Please refer to the actual product in the box.
- * Google Assistant is available in different languages and countries specific to product types.
- * Availability and functionality of voice-control services varies according to country and language.
- * HBO Max app service will be available by August 2024.
- * Matter/Control4: this feature will become available in 2024 via a software update.

