

**GOLDAIR**

# ecopanel

425 Watts

## Panel Heater

**G2** **NEW**  
GENERATION



**Convection/Radiant  
Technology**  
Effective warmth



**Digital  
Thermostat**  
Set your comfort level



**Wall Mounted**  
Saves valuable floor space



**Large Heating Surface**  
Good heat distribution



**3 YEAR  
WARRANTY**



**SAFETY  
TESTED AND  
APPROVED**

This page is intentionally left blank.

# General Care and Safety Guide

**YOUR SAFETY IS IMPORTANT TO US. PLEASE ENSURE YOU TAKE NOTE OF THE INSTRUCTIONS AND WARNINGS OUTLINED IN THIS MANUAL.**

**CAUTION:** In order to avoid a hazard due to inadvertent resetting of the thermal cut-out, this appliance must not be supplied through an external switching device, such as a timer, or connected to a circuit that is regularly switched on and off by the utility.

- This appliance is not intended for use by persons (including children) with reduced physical, sensory or mental capabilities or lack of experience and knowledge, unless they are supervised or have been given instruction concerning the use of the appliance by a person responsible for their safety.
- Children should be supervised to ensure that they do not play with the appliance.
- If the supply cord is damaged, it must be replaced by the manufacturer, its service agent or similarly qualified persons in order to avoid a hazard.

**WARNING:** You must not cover this heater. Covering this heater presents fire risk and will activate the safety fuse; permanently disabling the unit.

**WARNING:** Do not use this heater in small rooms when they are occupied by persons not capable of leaving the room on their own, unless constant supervision is provided.

**WARNING:** To reduce the risk of fire, keep textiles, curtains, or any flammable material a minimum distance of 1 metre from the air outlet.

**WARNING:** In order to avoid overheating or fire, do not cover the heater.

- The heater must not be located immediately below a socket outlet.
- Do not use the heater if it has been dropped or damaged.
- Do not use if there are visible signs of damage to the heater.
- Ensure heater is on a flat, stable, heat-resistant surface.
- Do not use this appliance in the immediate surrounds of a bath, a shower, or a swimming pool or other liquids.
- Keep all objects at least 1 metre from the front and 150mm from the sides of the appliance.
- This appliance is intended for household use only and not for commercial or industrial use.
- Indoor use only.
- Use only the voltage specified on the rating label of the appliance.
- Use this appliance only as described in this manual. Any other use is not recommended by the manufacturer and may cause fire, electric shock or injury.
- The common cause of overheating is deposits of dust or fluff in the appliance. Ensure these deposits are removed regularly by unplugging the appliance and vacuum cleaning the air vents and grills.

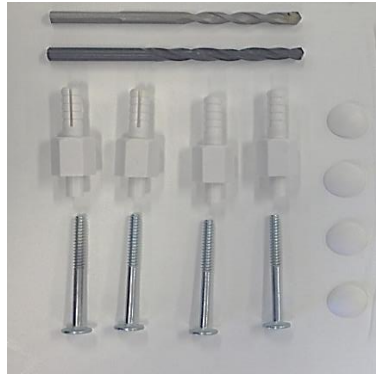
# General Care and Safety Guide

- **Never use the appliance to dry clothes.**
- Always unplug appliance when not in use.
- Do not connect the appliance to mains supply until completely assembled and adjusted.
- Ensure hands are dry before handling the plug or main unit.
- Do not operate with cord set coiled up as a heat build up is likely, which could be sufficient to become a hazard.
- Carry out regular checks of the supply cord to ensure no damage is evident
- Do not operate this appliance with a damaged cord, plug or after the appliance malfunctions or has been dropped or damaged in any manner. Return to a qualified electrical person for examination, electrical service or repair.
- Do not twist, kink or wrap the cord around the appliance, as this may cause the insulation to weaken and split. Always ensure that all cord has been removed from any cord storage area and is unrolled before use.
- It is recommended that this heater is plugged directly into the wall socket. Power boards are not rated to supply power to high wattage appliances.
- A correctly specified, undamaged extension cord may be used with this heater provided it is used in a safe manner.
- Do not remove plug from power socket until the appliance has been switched off.
- Do not remove plug from power socket by pulling cord; always grip plug.
- Do not place cord under carpet or cover with rugs or furniture. Arrange the cord so it cannot be tripped over.
- Don't place appliance on bedding or on thick & long carpet where the openings may get blocked.
- Switch off and use handle provided when moving
- Do not place appliance close to radiant heat source.
- Do not insert or allow foreign objects to enter any ventilation or exhaust opening, as this may cause an electric shock, fire or damage to the appliance.
- Do not sit on the appliance.
- Do not use abrasive cleaning products on this appliance. Clean with a damp cloth (not wet) rinsed in hot soapy water only. Always remove plug from the mains supply before cleaning.
- Do not operate in areas where petrol, paint or other flammable liquids are used or stored.
- The appliance must not be immersed in any liquids.
- There are no user serviceable parts installed in the unit.
- Do not place the unit in wardrobes or other enclosed spaces as this may cause fire hazards.
- This unit is not supposed to be used in or around locations where foodstuffs, works of art or delicate articles of science, etc are stored.
- When the appliance has been unpacked, check it for transport damage and ensure all parts have been delivered. If parts are missing or the appliance has been damaged, contact the Customer Services Team.
- If your appliance does not work, or is not working properly, contact the place of purchase or the Customer Services Team.

# Components



Heater x 1



Screw pack components

Drill bits x 2  
(1 x 7mm for plasterboard or  
wooden walls,  
1 x 8mm for masonry walls)  
Mounting Plugs x 4  
Screws x 4  
Screw Caps x 4

# Wall Mounting & Position Instructions

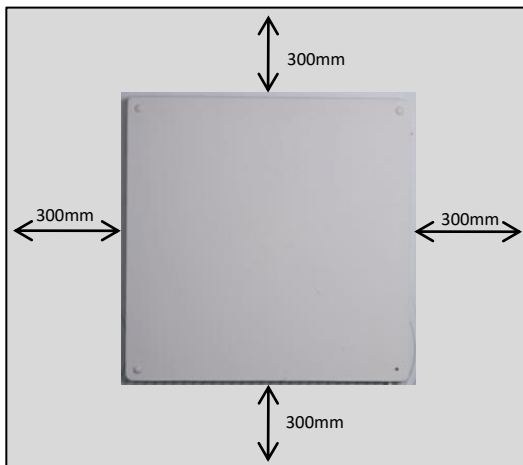
Always choose a safe location for the heater, keeping in mind the safety precautions outlined below. The heater needs to be mounted so that the power switch is in the top right hand corner. Do not run the power cord behind the heater. This will determine where you mount the heater in relation to where the power socket is located.

**NOTE:** Your Goldair EcoPanel Heater should be installed with at least 300mm clearance from the floor and any other surrounding parts including other appliances, side walls, ceilings, shelves and soft furnishings.

**DO NOT RUN THE POWER CORD BEHIND THE HEATER**

**WALL MOUNTED HEATERS ARE ONLY TO BE MOUNTED ON WALLS THAT COMPLY WITH CURRENT AS/NZS SPECIFICATIONS & BUILDING REGULATIONS**

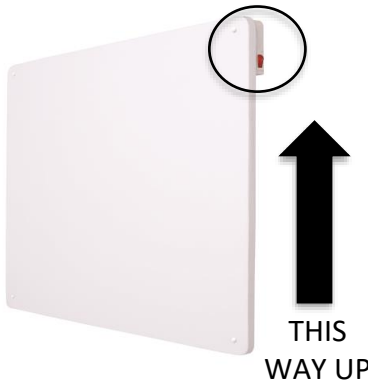
**MAKE SURE THE APPLIANCE IS UNPLUGGED AND POWER SWITCHES ARE OFF**



# Wall Mounting & Position Instructions cont.

## Orientation.

The heater must be mounted on the wall with the power switch in the top right hand position as shown below.

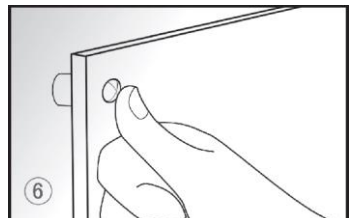
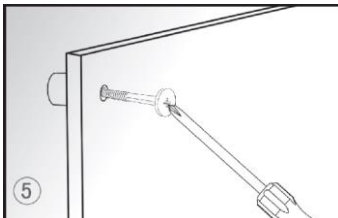
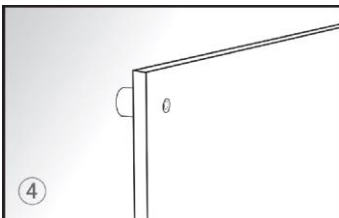
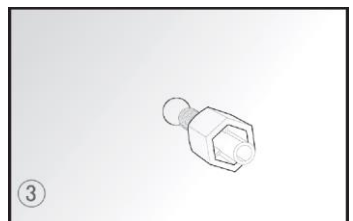
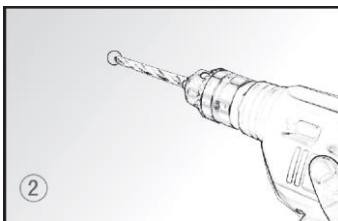
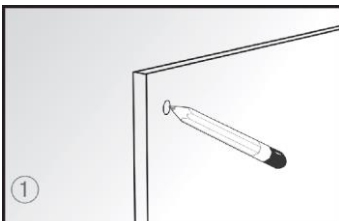


Note: Do not run power cord behind the heater.

**NOTE: Your Goldair EcoPanel Heater should be installed with at least 300mm clearance from the floor and any other surrounding parts including other appliances, side walls, ceilings, shelves and soft furnishings.**

1. Mark the positions of the four holes to be drilled on the wall. Ensure there is a 300mm clearance on all sides of the heater.
2. Drill holes with an appropriate drill bit for the wall surface you are mounting the heater on to.
3. Insert the plastic rail fittings into the holes.
4. Install the panel heater onto the four rail fittings matching the four holes on the heater.
5. Screw the four screw bolts into the plastic rail fittings.
6. Put the caps onto the end of the screw bolts. It is recommended to use some normal glue to stick the caps onto the bolts steadily.

To remove the unit from the wall, simply remove the bolt caps, unscrew the bolts with a screw driver and take the heater down.



# Operating Your Heater

Always choose a safe location for the heater, keeping in mind the safety precautions outlined. Ensure all packaging has been removed from the unit before use. Please follow the below instructions.

**WARNING:** In order to avoid overheating or fire, do not cover the heater.

**WARNING:** Keep all objects at least 1 metre from the front and 300mm from the sides of the appliance.

**WARNING:** Do not use this heater with a programmer, separate timer, remote-control system or any other device that switches the heater on automatically, since a fire risk exists if the heater is covered or positioned incorrectly.

**WARNING:** Never leave this heater unattended while in use.

**WALL MOUNTED HEATERS ARE ONLY TO BE MOUNTED ON WALLS THAT COMPLY WITH CURRENT AS/NZS SPECIFICATIONS & BUILDING REGULATIONS**

Once the heater is in a safe operating position and all switches are in the off position, insert the power plug into the mains outlet.

**CAUTION:** Ensure the power cord is not tight because if pulled it may partially pull the plug from the socket. A partially inserted plug will overheat the plug and socket and could result in fire.



# Operating Your Heater

Your Goldair Panel Heater will provide background warmth.  
This Panel Heater is designed to take the chill off the room.

The surface of this Panel Heater can be painted with good quality paint (acrylic or enamel).

**Decorating tip: All wall mounted heaters may cause paint to discolour or wall paper to lift.**

## OPERATING INSTRUCTIONS

Before plugging in and using your new Goldair panel heater, check all surfaces to ensure the heater is not damaged in any way.

Check that the On/Off switch is set to the Off position before plugging the heater into the mains supply.

Use the On/Off switch along the side of the heater to turn your heater on.

## SETTING THE THERMOSTAT

**NOTE: The temperature sensor (E) needs to be pulled out approximately 35mm to read the ambient temperature.**

**As the sensor is in the heater and will be affected by the heat coming off the heater you may need to have a separate temperature gauge in the room further away to understand what the actual room temperature is.**

**The heat setting digital display (F) ranges from 1-10 with 10 being the hottest setting.**

When you first turn the heater on, the digital display will default to number 06. Within a few seconds it will switch to the number that is closest to the current ambient room temperature.

The most effective way to set the temperature, is to press the 'plus' button until the digital display reads 10. Within a few seconds the digital display will revert back to the number that is closest to the current ambient room temperature. But the setting will have been stored in the memory.

The heater will start to work and the digital display will start to increase from default 06 setting to 10 setting (max). Depending on other influences (open doors, size of room, house insulation, outside temperature) this could take some time.

The temperature will continue to rise. When you are comfortable with the temperature in your room, take note of the digital display reading (e.g. 07) and then using the 'minus' button, reduce the thermostat to that number. The heater will now cycle on and off to maintain the number you have set.

Note: If you turn the heater off the temperature will revert to the default (06) and you may need to follow the process above again when you turn the heater back on.

# Operating Your Heater

## SAFETY DEVICES

This appliance has two protection devices:

- Resettable thermal link - this will automatically disconnect the power to the appliance at a pre-set overheat temperature. After cooling down it will reset and power on again. If this occurs, investigate what is causing the appliance to overheat.
- Thermal fuse - this disconnects the appliance permanently in case of overheating. (It is non resettable).

Note: The light in the power switch will remain on even after the safety devices have activated to show there is still power to the heater

**CAUTION: The heater generates heat during use. Proper precautions must be taken to prevent the risk of burns, scalds, fires or other damage to persons.**

## CARE AND CLEANING

- The heater requires regular cleaning to ensure trouble free operation:
- Unplug the heater from the mains supply before cleaning.
- Ensure that the heater has been allowed to cool down completely before cleaning.
- The common cause of overheating is deposits of dust or fluff in the appliance. Ensure these deposits are removed regularly by unplugging the appliance and vacuum cleaning the air vents and grills.
- Use a damp cloth (not wet) to wipe the exterior of the heater to remove dust and dirt.
- Never use solutions such as petrol, thinners or polishing agents.
- Ensure the heater is dry before plugging back into the mains supply.

## PROOF OF PURCHASE

To receive warranty retain receipt as proof of purchase.

### TECHNICAL SPECIFICATION

Model No: GEPH213  
Supply: 240VAC 50Hz  
Wattage: 425W

# GOLDAIR

### SUPPORT AND TECHNICAL ADVICE

**Goldair – New Zealand**  
Monday – Friday 8am-5pm  
Phone +64 (0)9 917 4000  
Phone 0800 232 633  
info@cdb.co.nz

**Goldair – Australia**  
Monday – Friday 8am-5pm  
Phone +61 (0)3 9365 5100  
Phone 1300 465 324  
info@cdbgolair.com.au

## Three Year Warranty

Thank you for purchasing this Goldair product. Your product is warranted against faults and manufacture when used in normal domestic use for a period of **three years**. In non-domestic use Goldair limits the voluntary warranty to **three months**.

Goldair undertake to repair or replace this product at no charge if found to be defective due to a manufacturing fault during the warranty period.

This warranty excludes damage caused by misuse, neglect, shipping accident, incorrect installation, or work carried out by anyone other than a qualified electrical service technician.

PLEASE KEEP YOUR RECEIPT AS THIS WILL HELP VERIFY YOUR WARRANTY.

The benefits given to you by this warranty are in addition to other rights and remedies available to you under law in relation to the goods or services to which this warranty relates.

In Australia, our goods come with guarantees that cannot be excluded under the Australian Consumer Law. You are entitled to a replacement or refund for a major failure and compensation for any other reasonably foreseeable loss or damage. You are also entitled to have the goods repaired or replaced if the goods fail to be of acceptable quality and the failure does not amount to a major failure.

In New Zealand this warranty is additional to the conditions and guarantees of the Consumers Guarantee Act (1993).

### Goldair – New Zealand

CDB Goldair  
PO Box 100-707  
N.S.M.C  
Auckland

Phone +64 (0)9 917 4000  
Phone 0800 232 633  
[www.goldair.co.nz](http://www.goldair.co.nz)

### Goldair – Australia

CDB Goldair Australia Pty  
PO Box 574  
South Morang  
Victoria, 3752

Phone +61 (0)3 9365 5100  
Phone 1300 GOLDAIR (1300 465 324)  
[www.goldair.com.au](http://www.goldair.com.au)

### Goldair Three Year Warranty (IMPORTANT: Please complete and retain this warranty card)

Name \_\_\_\_\_

Address \_\_\_\_\_

Place Of Purchase \_\_\_\_\_ Date of Purchase \_\_\_\_\_

Name Of Product \_\_\_\_\_ Model Number \_\_\_\_\_

Attach a copy of the purchase receipt to this warranty card

GOLDAIR

ecopanel

CDB  GOLDAIR

**New Zealand**  
PO Box 100-707,  
North Shore Mail Centre,  
Auckland 0745  
[www.goldair.co.nz](http://www.goldair.co.nz)

**Australia**  
PO Box 574,  
South Morang,  
Victoria 3752  
[www.goldair.com.au](http://www.goldair.com.au)