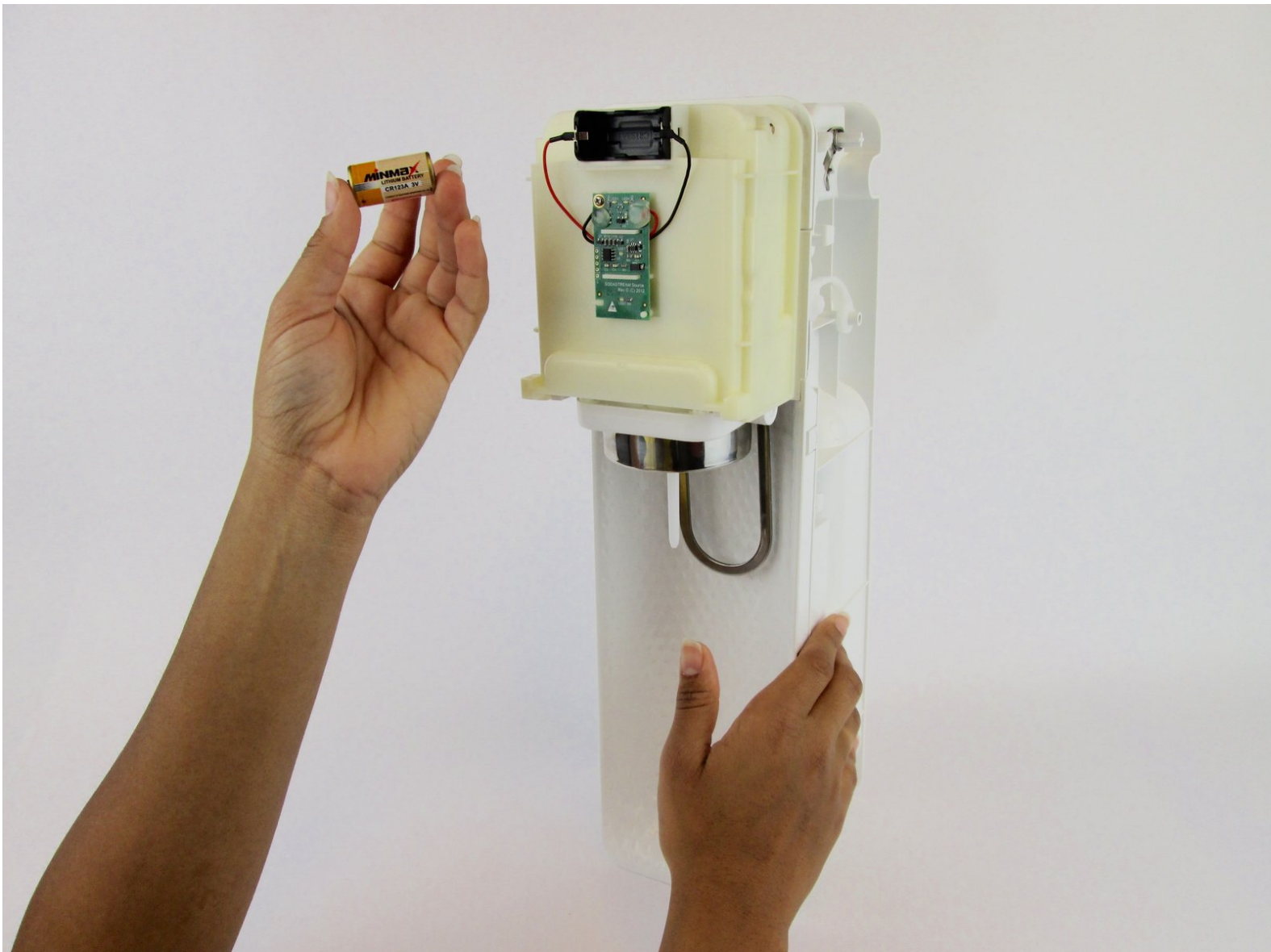




# SodaStream Source Battery Replacement

Replacing the battery inside of your SodaStream Source.

Written By: Alexandra I Curtis



## INTRODUCTION

The SodaStream Source is operated by a 3V lithium battery. If you are experiencing trouble with your device not turning on, or your LED lights are not coming on it could be that your battery needs to be replaced. This guide will instruct you on how to remove the carbonation block and replace the internal battery.



### TOOLS:

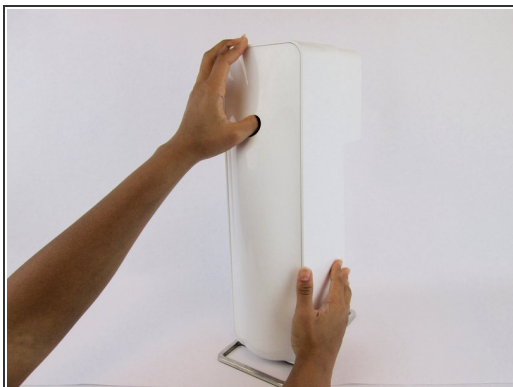
- [Phillips Head Screwdriver: Size PH1](#) (1)



### PARTS:

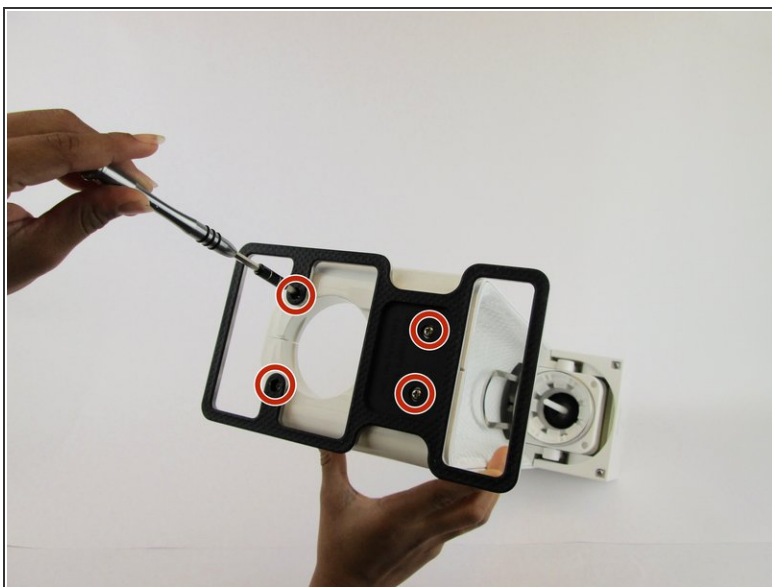
- [CR123A Lithium Battery](#) (1)

## Step 1 — SodaStream Source External Disassembly



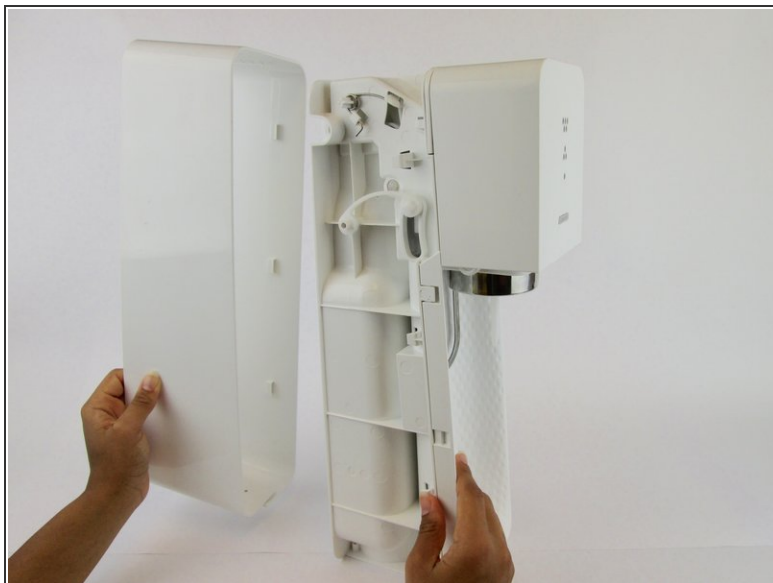
- Remove the soda bottle and the CO2 canister from the machine.

## Step 2



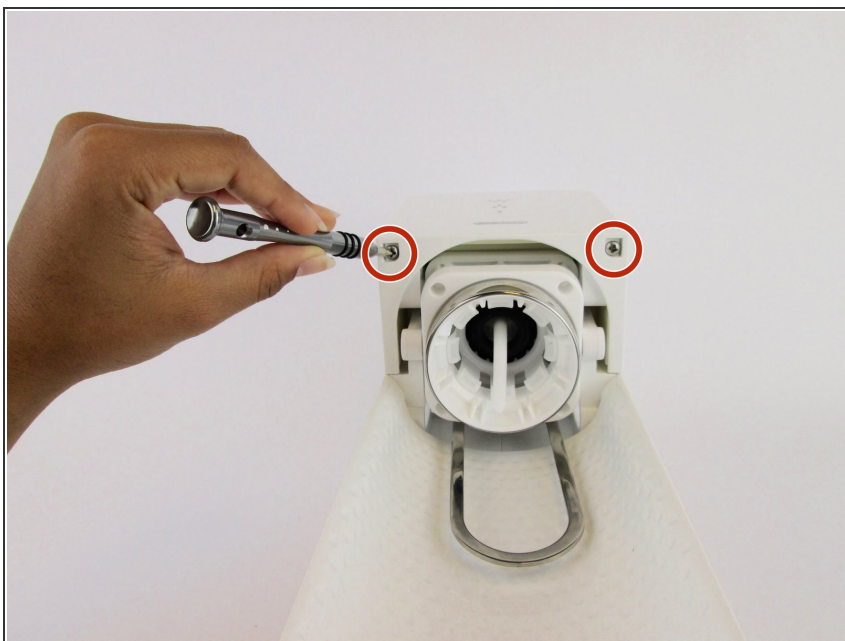
- Remove the four 17.8 mm screw from the bottom metal base using a [Phillips #1 screwdriver](#).

### Step 3



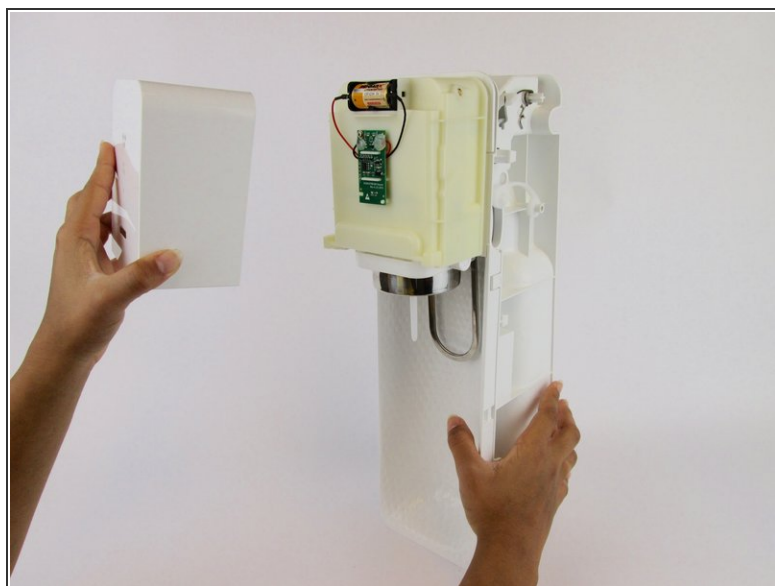
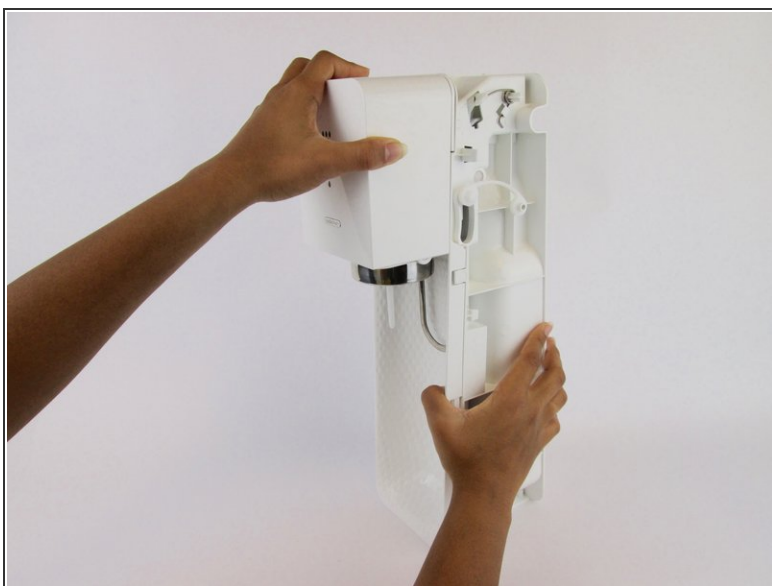
- Pull the outer cover away from the front of the device.

### Step 4



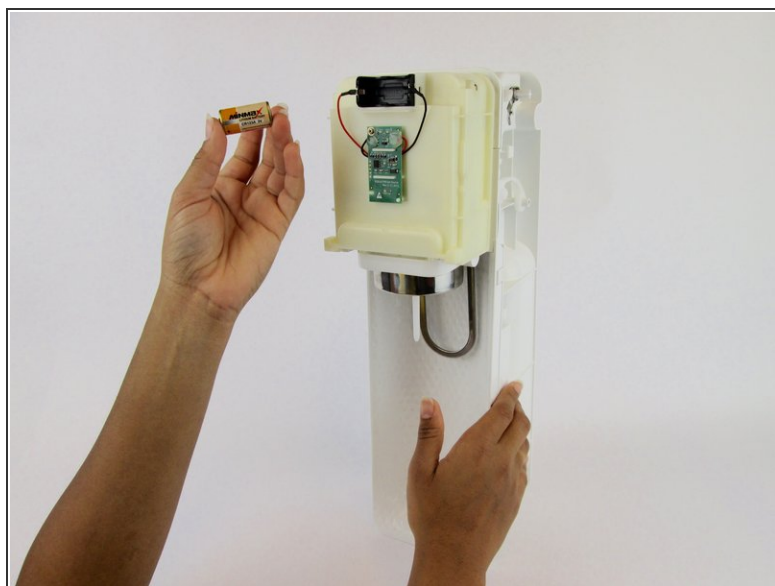
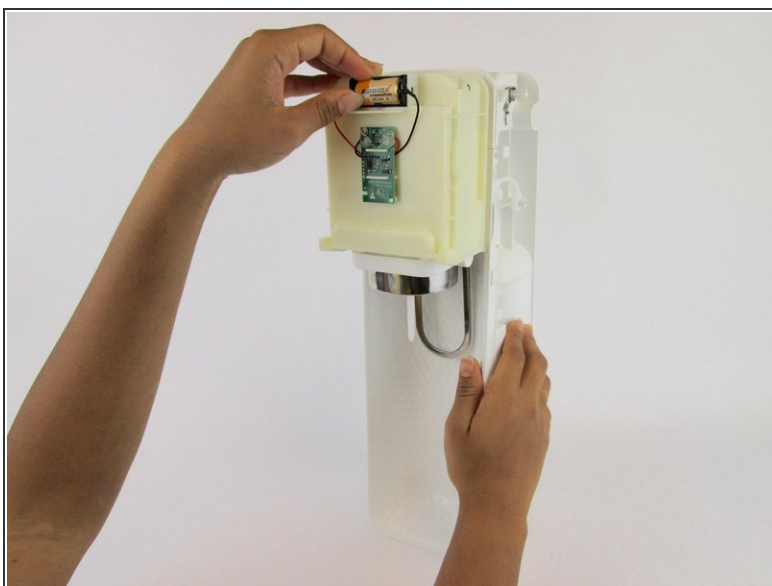
- Remove the two 18.2 mm screws from the bottom of the front cover using a [Phillips #1 screwdriver](#).

## Step 5



- Firmly pull the front cover off.
- ⓘ This piece is difficult to remove and requires force. It may help to use a wide, thin object to pry it off (like a [Jimmy](#)).

## Step 6 — Battery



- Remove the old battery and replace it with a new 3V lithium battery.

To reassemble your device, follow these instructions in reverse order.