



LuxSpace, surface mounted

DN570C LED20S/830 PSU-E C WH

LUXSPACE 2 COMPACT LOW HEIGHT - 830 warm white - Power supply unit external (PSU) - High-gloss mirror - Push-in connector and pull relief - White RAL 9003

Customers are looking to optimize all their resources, and that means not just their running costs (energy, etc.) but also their human resources. Energy savings are therefore a priority, but they must not have an adverse effect on the well-being of employees, who need a pleasant environment in order to be more productive, or on customers, who want to enjoy their shopping experience. LuxSpace provides the perfect combination of efficiency, light comfort and design, without compromising on lighting performance (color rendering and color uniformity). It offers a wide choice of options for creating the desired ambience, no matter the application.

Product data

General information			
Light source colour	830 warm white	Protection class IEC	Safety class I (I)
Light source replaceable	No	Glow-wire test	850/5 [Temperature 850 °C, duration 5 s]
Number of gear units	1 unit	Flammability mark	F [For mounting on normally flammable surfaces]
Driver/power unit/transformer	PSU-E [Power supply unit external (PSU)]	CE mark	CE mark
Driver included	Yes	ENEC mark	ENEC mark
Optic type	C [High-gloss mirror]	Warranty period	5 years
Luminaire light beam spread	80°	Constant light output	No
Control interface	-	Number of products on MCB (16 A type B)	24
Connection	PIP [Push-in connector and pull relief]	EU RoHS compliant	Yes
Cable	-	Product family code	DN570C [LUXSPACE 2 COMPACT LOW HEIGHT]

LuxSpace, surface mounted

Unified glare rating CEN	22
--------------------------	----

Operating and electrical

Input Voltage	220 to 240 V
Input frequency	50 to 60 Hz
Inrush current	16 A
Inrush time	0.195 ms
Power factor (min.)	0.9

Controls and dimming

Dimmable	No
----------	----

Mechanical and housing

Housing material	Aluminum die-cast
Reflector material	Polycarbonate aluminum coated
Optic material	Polycarbonate
Optical cover/lens material	Polycarbonate
Fixation material	Steel
Optical cover/lens finish	Frosted
Overall height	215 mm
Overall diameter	250 mm
Colour	White RAL 9003
Dimensions (height x width x depth)	215 x NaN x NaN mm (8.5 x NaN x NaN in)

Approval and application

Ingress protection code	IP20 [Finger-protected]
Mech. impact protection code	IK02 [0.2 J standard]
Sustainability rating	-

Initial performance (IEC compliant)

Initial luminous flux (system flux)	2200 lm
-------------------------------------	---------

Luminous flux tolerance	+/-10%
Initial LED luminaire efficacy	134 lm/W
Init. Corr. Colour Temperature	3000 K
Init. Colour rendering index	>80
Initial chromaticity	(0.43, 0.40) SDCM <2
Initial input power	16.4 W
Power consumption tolerance	+/-10%

Over time performance (IEC compliant)

Control gear failure rate at median useful life 50,000 h	5 %
Lumen maintenance at median useful life* 50,000 h	L90

Application conditions

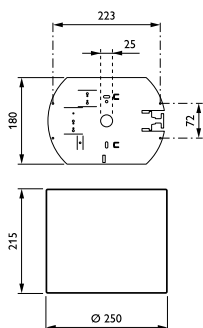
Ambient temperature range	+10 to +25 °C
Performance ambient temperature Tq	25 °C
Suitable for random switching	Yes

Product data

Full product code	871869997088800
Order product name	DN570C LED20S/830 PSU-E C WH
EAN/UPC – product	8718699970888
Order code	97088800
SAP numerator – quantity per pack	1
Numerator – packs per outer box	1
SAP material	910505100959
Copy Net Weight (Piece)	1.900 kg



Dimensional drawing



DN570C LED20S/830 PSU-E C WH

LuxSpace, surface mounted

Photometric data



IFGU1_DN570C PSE-E 1xLED20S830 C.EPS

IFPC1_DN570C PSE-E 1xLED20S830 C.EPS

