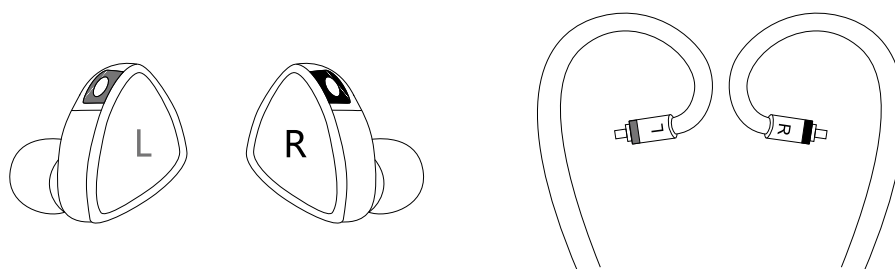




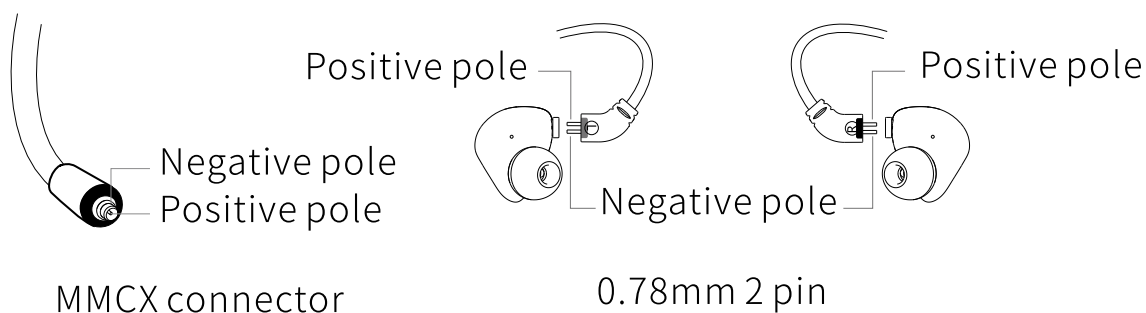
快速入门指南
Quick Start Guide

Wearing Instructions

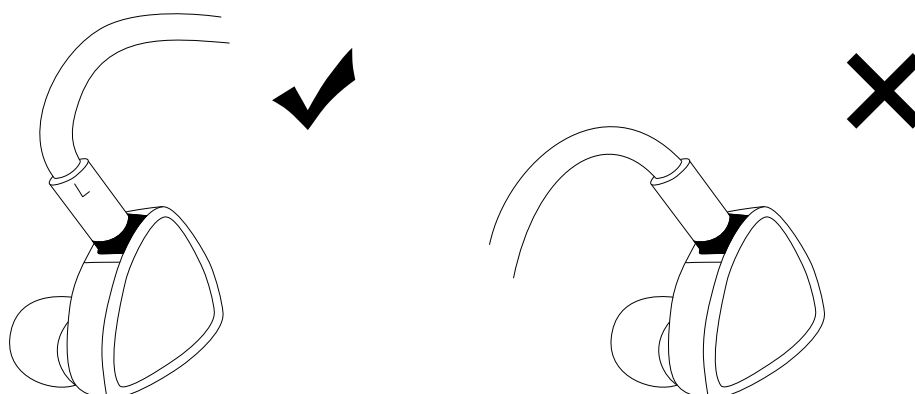
To identify the left and right channels of the earphone units and cable: L=left channel, R=right channel. In the case of no character signs, the "blue" mark is the left channel and the "red" mark is the right channel.



When replacing the cable of other brands, please choose the cable with the same type of connector as this product, so as not to affect the sound quality and listening experiences.



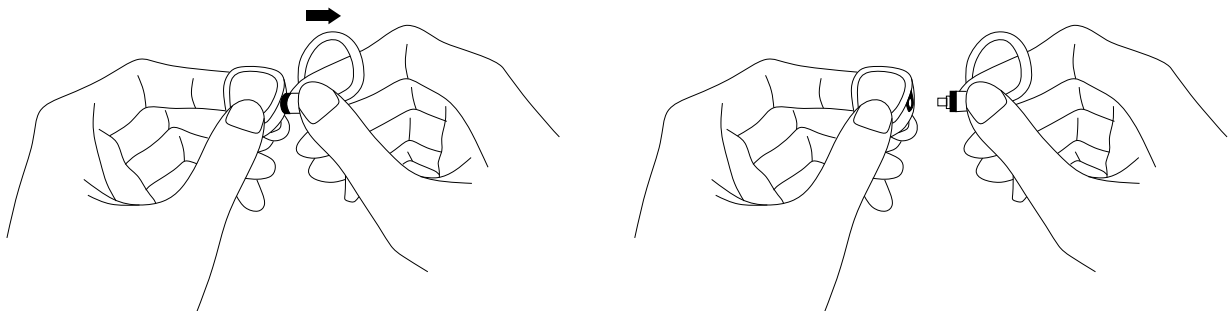
This product adopts an over-the-ear wearing design. When installing the earphone cable, please ensure the earphone unit and cable form a shape that can wrap around the ear as shown in the figure below.



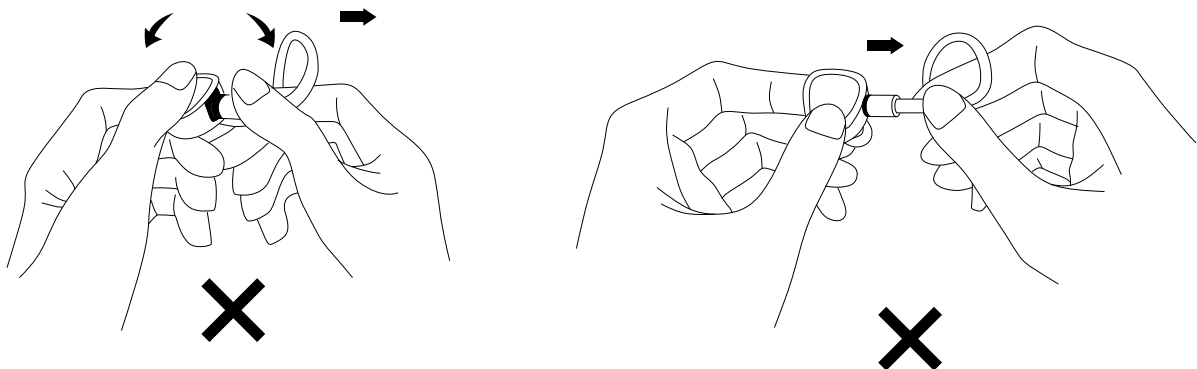
When wearing the earphones, gently rotate and press the units according to the direction shown in the picture. After properly wearing, put the earphone cable over your ear and adjust the earphones until you feel comfortable.



When removing the earphone cable, hold the cable connector and the earphone unit tight with your fingers. Keep them in the same line and then pull them apart. Or use the MMCX assist tool to detach it (Please refer to the instructions of the MMCX assist tool to see how to use it). Note that do not rotate the 0.78mm 2 pin cable.



Please do not install or remove the cable at a tilted angle, and do not pull the earphone cable directly, so to avoid it being broken.



Notes:

1. If it is difficult to remove the earphone cable, please do not remove it violently. If necessary, please contact the official after-sales staff for assistance.
2. Pictures are for reference only. The actual product may vary.

Notes and Precautions

- ❶ For your safety, please avoid using earphones in dangerous environments.
- ❷ Please adjust the volume to a suitable level to protect your hearing.
- ❸ Please do not place the device in humid or strong-magnetic environments for a long time.
- ❹ If the earphones are to be left unused for a long time, please unplug it from the playing device.
- ❺ Please do not disassemble the earphones on your own.

Authenticity Checking

- ❶ Scratch off the coating on the product package to get a 20-bit security code.
- ❷ Go to FIIO official website at www.fiio.com. Click the 'Check Authenticity' icon in the upper-right corner, and then enter the 20-bit security code and 4-bit verification code. You will get the checking result after clicking the 'query' icon.
- ❸ Checking results:
 - A. The security code entered proves the product is authentic.
The product you purchased is an authentic product from Guangzhou FIIO Electronics Technology Co., Ltd. Thanks for your support!
 - B. The security code entered proves the product is not authentic.
The product you purchased is not an authentic product from Guangzhou FIIO Electronics Technology Co., Ltd.

Warranty Terms and Conditions

Product types		Term of service
Earphone units		One year of free maintenance
Accessories except the earphone units (subject to the official list)	Earphone cable	Half a year of free maintenance
	Other accessories	N/A
	Package materials (fragile parts like the packing box)	N/A
Notes: The above guarantees start from the issue date of the invoice/receipt. These warranty terms are for reference only. For specific details, please refer to the warranty terms of our local sales agents.		

Guangzhou JadeAudio Technology Co., Ltd. / Guangzhou FIIO Electronics Technology Co., Ltd. reserves the final interpretation and amendment for the above warranty terms and conditions. The warranty is null and void under the following circumstances.

- Defects or damage caused by improper operations such as vibrating, bumping, falling to the ground, buckling, tearing, excessive pulling.
- Defects or damage caused by disassembly of the product by user or unauthorized repair personnel.
- Defects or damage for being put in humid environments, high-intensity magnetic fields or soaked into water.
- Defects or damage caused by natural disasters.
- Unable to provide valid proofs of purchase.

Note: Man-made damage should be determined by JadeAudio or FIIO's maintenance personnel.

Procedures of Getting After-Sales Service

- ❶ Please contact the local dealer first once you find problems with the device from JadeAudio or FIIO. If they refuse to give related after-sales service, please give feedback to JadeAudio Support or FIIO Support by sending an email to support@jadeaudio.com or support@fiio.com. We would handle it properly to ensure customers' satisfaction.
- ❷ For repair service, you are supposed to send the defective product to JadeAudio or FIIO with freight paid. After it has been repaired, we will send the product back to you with freight paid by us.
- ❸ It is highly suggested to buy the product from the local authorized sales agents to get better, faster before- and after-sales service.
- ❹ Please do not maintain or dismantle the product on your own and keep it away from water.
- ❺ For abnormal working issues or any further questions, please visit our official website->Support to get related information or send an email to support@jadeaudio.com or support@fiio.com for consultation.

Note: Due to continuous improvement, every specification and design is subject to change at any time without further notice.

Contact Information for After-Sales Service

E-mail: support@jadeaudio.com; support@fiio.com

Web: <http://www.jadeaudio.com>; <https://www.fiio.com>

Facebook: <https://www.facebook.com/JadeAudio.Co>;
<https://www.facebook.com/FIIOAUDIO>

Hereby, Guangzhou FIIO Electronics Technology Co., Ltd. declares that this device is in compliance with Directive 2014/30/EU. The full text of the EU declaration of conformity is available at: www.fiio.com/doc



WEEE Directive & Product Disposal



At the end of its serviceable life, this product should not be handed as household or general waste. It should be handed over to the applicable collection point for the recycling of electrical and electronic equipment, or returned to the supplier for disposal.

Internal/Supplied Batteries

This symbol on the battery indicates that the battery is to be collected separately. This battery is designed for separate collection at an appropriate collection point.

This equipment has been tested and found to comply with the limits for a Class B digital device, pursuant to part 15 of the FCC Rules. These limits are designed to provide reasonable protection against harmful interference in a residential installation. This equipment generates, uses and can radiate radio frequency energy and, if not installed and used in accordance with the instructions, may cause harmful interference to radio communications.

However, there is no guarantee that interference will not occur in a particular installation. If this equipment does cause harmful interference to radio or television reception, which can be determined by turning the equipment off and on, the user is encouraged to try to correct the interference by one or more of the following measures:

- Reorient or relocate the receiving antenna.
- Increase the separation between the equipment and receiver.
- Connect the equipment into an outlet on a circuit different from that to which the receiver is connected.
- Consult the dealer or an experienced radio/TV technician for help.

This device complies with part 15 of the FCC Rules. Operation is subject to the following two conditions: (1) This device may not cause harmful interference, and (2) this device must accept any interference received, including interference that may cause undesired operation.