

User Manual



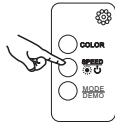
BLUETOOTH SMART

Thank you very much for choosing our company's bluetooth controller, and this product adopts the current emerging bluetooth technology and top manufacturing process, which is developed integrating years of R&D experience. The product can support mobile APP to perform local and remote control of electrical device at home. For proper installation and usage of the product, please read this instruction carefully.

1.Product Parameters

Working Voltage: DC12/24V
Current: 2A x 3CH
Max Load : 12V/48W; 24V/72W
Product size: L60 xW30 xH15mm
Working environment: indoor
Working temperature: - 10 C - 45 C (140 F - 113 F)
Humidity: <80% RH

2.Manual Control by buttons



COLOR : Static/dynamic mode,
SPEED : Click on/off,
MODE DEMO : Red Light and Music Model.

3.Connection

Connect the led controller to your LED strip and power, below photo for reference.



4.Installation



1 Clean the Back of the TV with a wet towel and dry it natural



2 Tear off the side of 3M double-sided adhesive



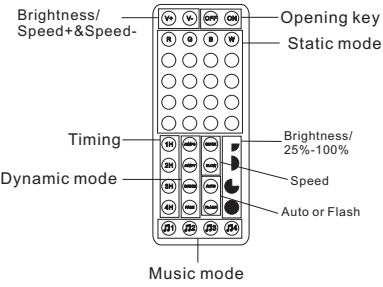
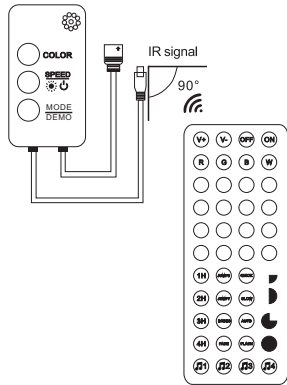
3 Place the lights on where you want to paste



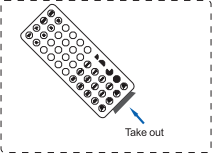
4 Connect the power port of the lamp to the device.

5.Ways to Operation

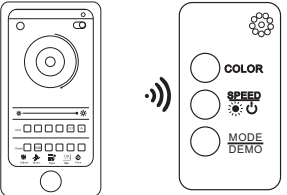
(1).Remote Control



Please pointing at the sensor of remote control receiver to control the light.



(2).APP Remote



Download App

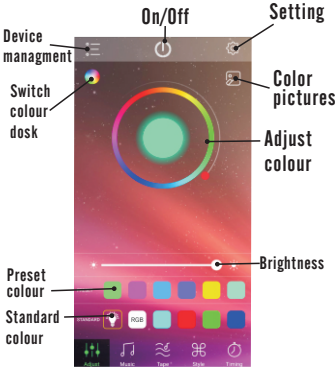


5.21 Bluetooth Connection:



For the first time you use it or never pair with 'Happy Lighting' after moving the equipment, please following the below steps:
A. First, please enter your phone settings, open the Bluetooth, searching and pairing with the 'Happy Lighting'.
B. Second, Open the Happy Lighting led app, the app will auto to connect the BLE light.

5.22 Main User Interface



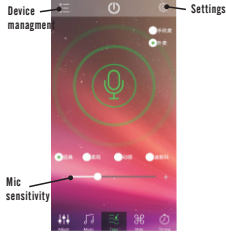
Adjust: Change the RGB LED color and White LED bright.

5.23 Music



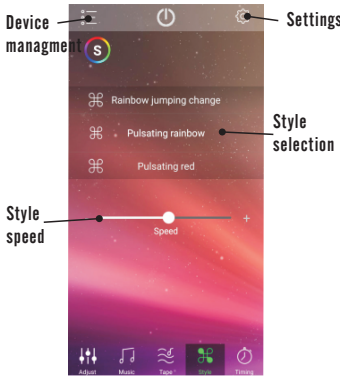
Play music and change RGB LED color by music rhythm.

5.24 Mood



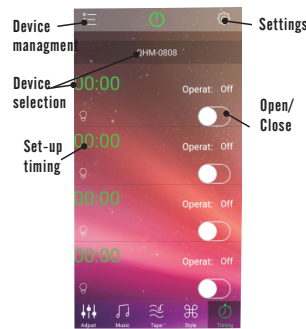
Change RGB LED color by phone microphone input voice rhythm.

5.25 Patterns



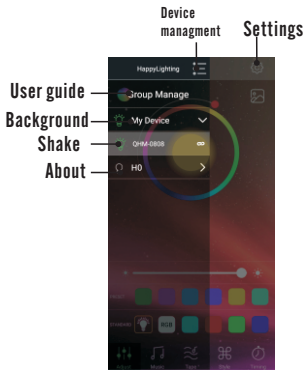
Change RGB LED color by fixed model.

5.26 Schedules :



Timers, auto ON/OFF.

5.26 Setting



Setting: Shake: Change RBG LED color by shake the phone; Music Hop: RBG LED color changed by music.

6.Warranty instructions

The one-year warranty of our products is only applicable to all operations that conform to the instructions. The warranty does not include the following:
1. Any change, amendment, deletion or scribbled purchase labels or instructions.
2. Failure due to damage, incorrect connection or misuse.
3. Because of the natural environment rather than the inherent causes of the product (such as lightning, flood, etc.). The bad phenomena of fire, etc.
4. The product has been opened or disassembled.
5. Adverse consequences arising from use, maintenance or custody do not conform to product specifications (e.g. damp, corrosive).
6. Any other matter caused by product defect, appearance distortion, appearance damage or external force Physical injury.

Note.

The illustrations of products, accessories, user interface, etc. in the manual are schematic diagrams for reference only. Due to the updating and upgrading of the product, there may be slight differences between the physical product and the schematic diagram. Please refer to the physical product.