



**Affordable. Reliable. Home Improvement.**

## **CART SPRAYERS**

**MODEL:KF-50C-1**

Technical Support and E-Warranty Certificate  
[www.vevor.com/support](http://www.vevor.com/support)

# VEVOR

Affordable. Reliable. Home Improvement.

## CART SPRAYERS

**MODEL:KF-50C-1**



This is the original instruction, please read all manual instructions carefully before operating. VEVOR reserves a clear interpretation of our user manual. The appearance of the product shall be subject to the product you received. Please forgive us that we won't inform you again if there are any technology or software updates on our product.

# SAFETY INSTRUCTIONS



EYE PROTECTION HAND PROTECTION FOOT PROTECTION DUST MASK PROTECTION WEAR WASH YOUR HAND

**! For your safety and the safety of others, the following precautions must be observed when operating the sprayer:**

1. During spraying operation, the personnel shall wear clothes in strict accordance with the regulations, wear masks, glasses, hats, gloves, or protective clothing against pesticide penetration, and shall not work naked.
2. It is strictly prohibited to spray toxic solutions such as pesticides on people or animals during use.
3. Patients with mental illness or serious diseases, drunken people, and people without operation knowledge are prohibited from using this machine. People who have just taken strenuous exercise, have not had a good rest, or have an insufficient sleep, as well as women in the period of lactation, should not be engaged in this work.
4. The operator must wash all parts of the body and clean all kinds of clothing after use.
5. When handling pesticides, the safety instructions provided by the pesticide manufacturer should be followed.
6. Do not use the special liquid.

## **WARNING:**

1. After spraying corrosive liquid, it is necessary to clean the residual liquid in the sprayer with water in time.
2. When spraying highly corrosive liquids, select plastic spray rods for spraying.
3. The sprayer should be fully charged before storage.
4. Do not leave machines and tools or store them in unattended places. Turn off the power when not in use.
5. Do not disassemble or change this machine.
6. Operators must spray pesticides in front of the wind direction and shall not work under high temperatures for a long time.
7. Before each use of the battery (including the new machine), please charge the battery for 8-12 hours. When the battery is not charged, cover the charging base tightly to prevent water from getting wet.

8. Try to avoid working without water to avoid damaging the diaphragm of the water pump.
9. Before use, try spraying with clean water to check whether there is water leakage at the base and whether the atomization effect is good. Only when everything is normal can you prepare liquid medicine for the operation.
10. When adding liquid medicine, it must pass through the filter screen. If there are impurities, the normal use of the machine will be affected.
11. If the liquid medicine overflows, please dry it immediately. Battery connectors, electrical components, and wire connectors shall not be exposed to liquid medicine to avoid corrosion.
12. Please do not use non-water bath powder because it cannot be dissolved into the liquid. And the suspended solids in the medicine tank will precipitate at the bottom, causing clogging of the filter screen and pipeline, thus affecting the pump's service life. The use of chemical liquids and special working fluids is prohibited.
13. When the liquor spraying is completed, turn off the power switch or regulating switch first, and then release the injection switch after the pump stops working.
14. Never point the spray wand at another person or animal, whether the sprayer is on or not.
15. The maximum temperature of the liquid to be sprayed must not exceed 43°C. Do not use the sprayer if the temperature of the work environment is up to 45°C or lower than -10°C.

### **MODEL AND PARAMETERS**

Model	KF-50C-1
Capacity	13.1 Gallons(50L)
Pump	Membrane mini-pump
Working Pressure	0-80psi
Max. Performance	(4.0±0.2) L/min
Charger	Input: 100-240V~ 50/60Hz Output: DC 21V,1.0A
Battery	Lead-acid battery (DC18V,5.0AH)



## STRUCTURE DIAGRAM

	Name	No.	Name
1	Water Inlet Cap	10	Hose Storage Rack
2	Kit Box	11	Voltmeter
3	Tank	12	Back Cover
4	Bottom	13	Battery Cover
5	Water Outlet Cap	14	Battery
6	Handle	15	Wheel
7	Spray Lance	16	Wheel Rod
8	Lance's Clamp	17	Regulator Knob
9	Nozzle	18	Electric Switch

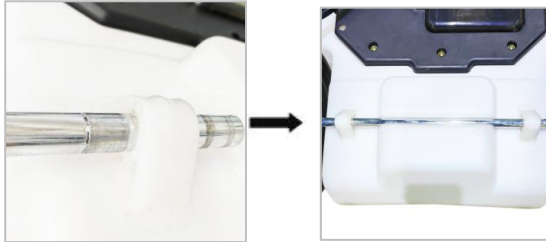
## COMPONENTS

No.	Picture	Name and Qty	No.	Pictur	Name and Qty
1		Barrel body (x1)	18		Filter Net (x1)
2		Hose Rack (x1)	19		Measuring Cup (x1)
3		Hose 20M (x1)	20		Lance's Clamp (x2)
4		Hose 10M (x1)	21		Battery (x1)
5		Kit Box (x1)	22		Charger (x1)
6		Handle Switch (x1)	23		Wheel Rod (x1)
7		Telescopic Lance (x1)	24		Wheel (x2)
8		Plastic Lance (x1)	25		Spring Clip (x4)
9		Three-heads Nozzle (x1)	26		Split Cotter (x1)
10		Fan-shaped Nozzle (x1)	27		Metal Gasket (x2)
11		Single-head Copper Nozzle (x1)	28		Hose Rack's Screw (x4)
12		Four-heads Copper Nozzle (x1)	29		Kit Box's Screw (x2)
13		Wind Proof Nozzle (x1)	30		Lance Clamp Screw (x2)
14		O-ring Seal Ring S1:8x13x2 (x2)	31		Seal Tape (x1)
15		O-ring Seal Ring S3:11x17x3 (x2)	32		Transfer Pump (x1)
16		O-ring Seal Ring S2:11x17x3 (x2)	33		User manual(x1)
17		Sealing Gasket ,S4(x2)	34		

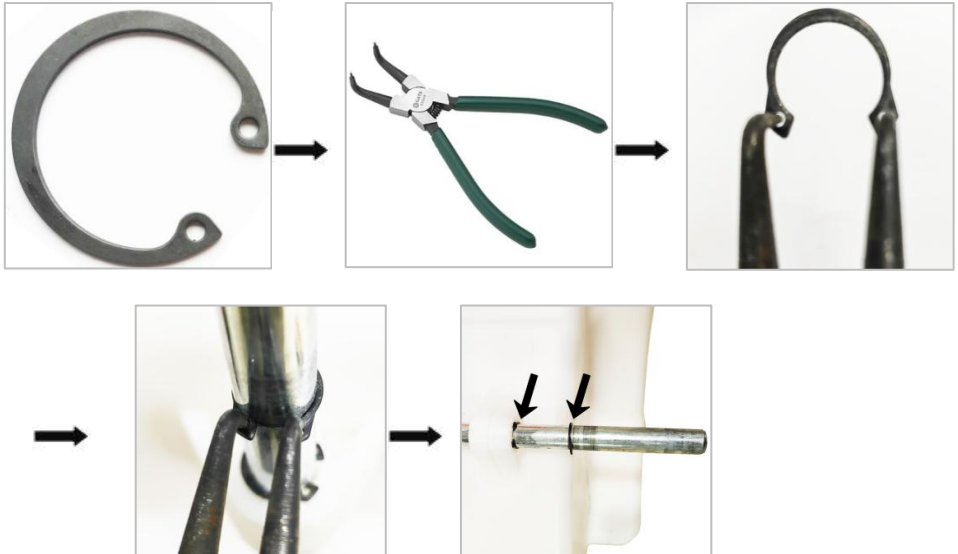
## ASSEMBLY

### STEP 01: ASSEMBLE WHEEL

1. Insert the steel rod into the bottom hole of the tank.



2. Insert Spring clip wrench's tip to the hole of spring clip, open the spring clip, insert the spring clip into the groove. (4 pieces)



3. Insert the wheel into the wheel rod, insert the metal gasket into the wheel rod.

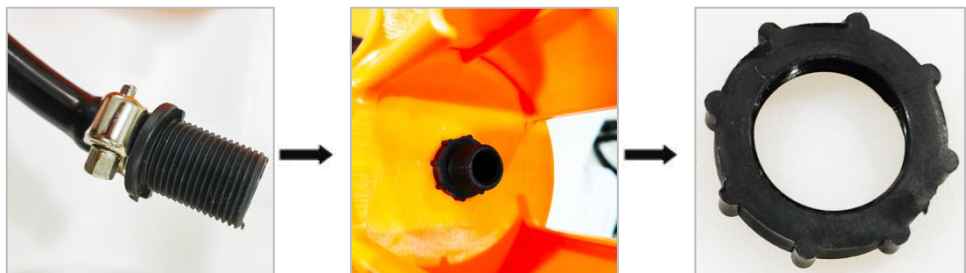


4. Bend the split cotter to C-curve by sharp-nose pliers, insert the split cotter into the hole of the wheel rod, insert the wheel cover into wheel.

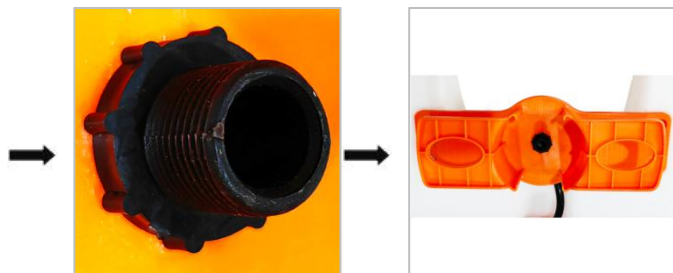


## STEP 02: ASSEMBLE HOSE RACK

1. Insert the plastic screw of the hose into hose rack, fix it with plastic nut, then fix the hose rack on the tank by the screw.







2. Connect the plastic nut of the hose(10m).



### STEP 03: ASSEMBLE FIT BOX

Fix the fit box with the screw by long screwdriver. (2 pieces)

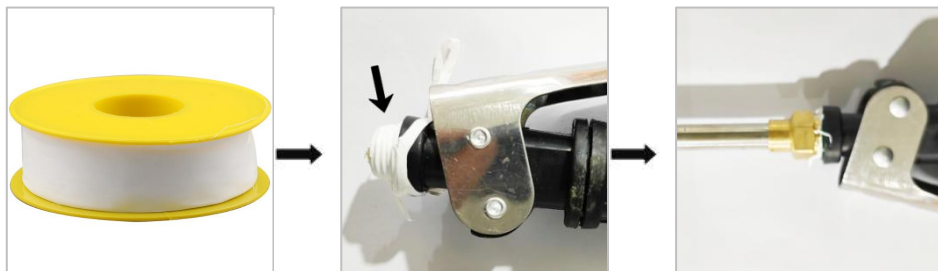


### STEP 04: ASSEMBLE LANCE SET

1. Twist the seal tape around the tail of the handle switch and connect the brass nut of the hose(10m).



2. Twist the seal tape around the head of the handle switch and connect the brass nut of the telescopic lance.



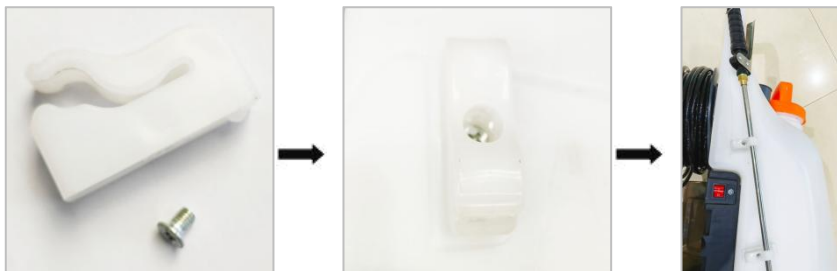
## STEP 05: CONNECT THE HOSES

Twist the seal tape around the outer screw of the hose(20m) and connect the brass nut of the hose(10m).



## STEP 06: ASSEMBLE TELESCOPIC LANCE'S CLAMP

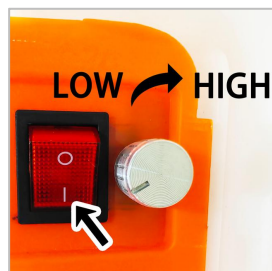
Fix the telescopic lance's clamp with the screw.



## USAGE

### 01. START TO WORK AND STOP TO WORK

1. Turn on the electric switch to "1", then rotate the knob to "HIGH", start to work.



2. Rotate the knob to "LOW", stop to work, then turn off the electric switch to "0".

### 02. ADJUST THE LANCE'S LENGTH

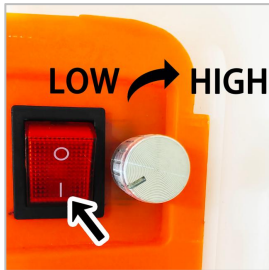


Loose the nut marked with the first arrow, adjust the length of the lance.  
Loose the nut marked with the second arrow, take out the small tube from

the big tube.



### 03. ADJUST THE PRESSURE



A. Rotate the knob to "HIGH", increase the pressure; Rotate the knob to "LOW", decrease. Rotate the knob to "OFF", stop work.

**NOTE:** Some nozzles must be adjusted to suitable pressure, refer to "INTRODUCTION AND APPLICATION OF NOZZLE" (page 15)

B. Press and hold the handle to start working, or release it to stop working.



C. When spraying for a long time, the handle can be fixed by the ring.

### 04. JUDGE THE INDICATOR LIGHT OF THE VOLTMETER



**Description of indicator light:**

**Yellow light "L":** Battery's power is low, needs charging.

**Yellow & Green light "L&N":** Both go on, battery power is enough, can be used normally.

**Yellow & Green & Red light "L&N&H":** All go on, abnormal. Stop using and eliminate the problem.

## 05. CHARGING

Open the battery's cover, take out the battery, insert the plug into the hole of the battery, then check the indicator light of charger. **Red light means charging, Green light means full.**



## 06. CHECK BATTERY'S CAPACITY

Press the button of the battery, the indicator light turns on.

Green light means battery's capacity. Red light means low battery's capacity.



## 07. TAKE OUT THE BATTERY

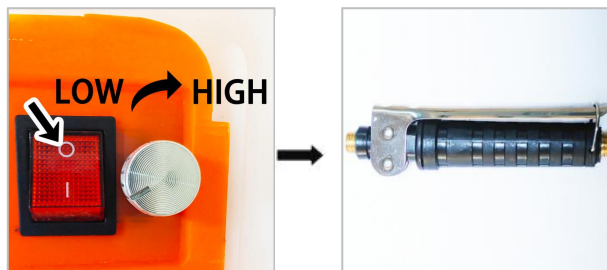
Open the battery's cover, press the red button, take out the battery.



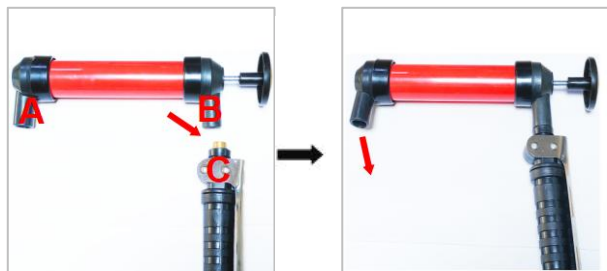
## 08. How to solve the pump not working?

**NOTE:** Please fill the clean water at first, avoid damage from leakage.

1. Turn on electric switch, then rotate the knob, the pump starts to work. Then lock the button of the handle switch.



2. Connect the handle switch “C” to the transfer pump “B”, then pump water from the pipe, the water flows from “A”.



## 09. CLEANING

Please clean the sprayer with water, and finally turn off the regulator and the electric switch after use.

# SEAL POSITION



Green Seal Ring  
S1:8x13x2



Green Seal Ring  
S2:11x17x2



Black Seal Ring  
S3:11x17x3



Black Gasket  
S4



Green Seal Ring (S1)  
Both nuts of Hose



Green Seal Ring (S2)





Black Seal Ring (S3)



Black Gasket (S4)



## INTRODUCTION AND APPLICATION OF NOZZLE

	Fan-shaped nozzle	Provide fan-shaped spray, which is mostly used in scenes requiring control range, such as weeding.
	Single-head copper nozzle	Rotational control spray. Provide a small amount of spray, or linear spray (15-20ft), only for the telescopic spray bar.
	Windproof nozzle	1. Equipped with a protective cover to reduce the impact of wind on spray. 2. Turn the top adjustment spray to suit different uses.
	Three-end Copper Nozzle	Provide a large amount of spray with a concentrated range.
	Three-end Plastic Nozzle	Provide a large amount of spray with a long range.

## MAINTAIN AND STORAGE

### Cleaning and care:

After operating the sprayer, remove the working solution from the tank completely and rinse the tank, hose, pump, and spray tube with clean water. Finally, spray with clean water for 3 minutes to eliminate the possibility of a chemical reaction when other chemicals are used in the next spraying. Residues of chemicals can lead to corrosion and other damage to parts of the sprayer especially spraying nozzles, filters, and seals.

### Storage rules:

- Keep the sprayer in a dry, cool, and out-of-way place for children.
- It is forbidden to store the sprayer near an open fire.
- To prevent damage to the pump and other parts, it must be washed and dried before storing the sprayer in winter. Clean the surface of machines and tools, filter screen, and



nozzle, and dry them in the air. Do not put them directly in the sun.

- Before storage, the battery must be fully charged. During the storage period, you need to charge your battery regularly with an adapter (at least once every 2 months).

- Keep the adapter in a dry place.

## TROUBLESHOOTING INSTRUCTION

Problem	Reason	Solution
The motor doesn't run. Automatically stop after working.	1. The power connection wire falls off. 2. The battery is flat. 3. Motor overheating. 4. Power switch is broken.	1. Check the wire connections. 2. Charge the battery. 3. Start work after the motor is cold. 4. Change a switch.
The nozzle does not spray water. The pressure is not steady.	1. The nozzle is blocked. 2. Air in the hose. 3. Pump is blocked. 4. Hose is leaking.	1. Clear the nozzle. 2. Check the hose to see if it is leaking or not. 3. Open the pump, and get the debris out. 4. Change a hose.
Flow rate and pressure reduction.	1. Suction plug. 2. Power is not enough.	1. Cleaning the filter 2. Change the battery
Leaking	1. Connecting place is not tight. 2. The O-ring is broken. 3. The hose is broken.	1. Tight the connecting. 2 Change the o-ring. 3. Change the hose.
Poor spraying.	1. The nozzle has debris. 2. The nozzle nut is broken. 3. The nozzle flat is installed on the wrong face. 4. The strainer is blocked. 5. Connecting parts are leaking. 6. The power is not enough.	1. Clearing the debris. 2. Change the nozzle nut. 3. Correct the face for flat. 4. Cleaning the strainer. 5. Tight the connecting part. 6. Charge the battery.

Turn the spraying nozzle off, the motor sometimes on, sometimes off.	1. The spraying nozzle has debris. 2. Seals not on the position. 3. The cover of the pump is leaking.	1. Clear the debris. 2. Tight and put the seals in position. 3. Tight the cover.
Stronger noise for motor	1. Fitting screw for the pump is loose.	1. Tight the screw.
Charging fail.	1. The socket is damp, the surface is oxidation, and the wire is broken.	1. Change the socket. 2. Connect wires again.

**Manufacturer:** Shanghaimuxinmuyeyouxiangongsi

**Address:** Shuangchenglu 803nong11hao1602A-1609shi, baoshanqu, shanghai 200000 CN.

**Imported to AUS:** SIHAO PTY LTD. 1 ROKEVA STREETEASTWOOD NSW 2122 Australia

**Imported to USA:** Sanven Technology Ltd. Suite 250, 9166 Anaheim Place, Rancho Cucamonga, CA 91730

<b>UK</b>	<b>REP</b>	YH CONSULTING LIMITED. C/O YH Consulting Limited Office 147, Centurion House, London Road, Staines-upon-Thames, Surrey, TW18 4AX
-----------	------------	--

<b>EC</b>	<b>REP</b>	E-CrossStu GmbH Mainzer Landstr.69, 60329 Frankfurt am Main.
-----------	------------	--





**Technical Support and E-Warranty Certificate**  
**[www.vevor.com/support](http://www.vevor.com/support)**