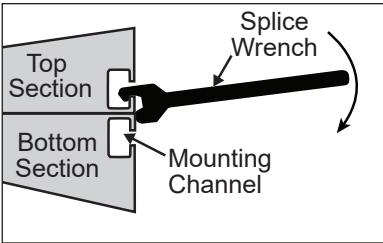


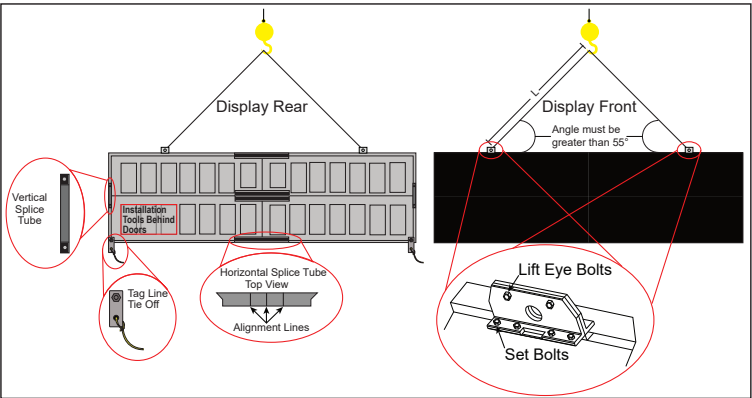
Time-Saving Tips

1. Locate installation parts and tools in the box shipped with the display. The provided splice wrench and torque stick are shown at right.
2. Determine the most level surface on which to splice multiple-section displays.
 - This may be the trailer. **Follow OSHA fall protection guidelines.**
3. Do as much preparatory work on the ground while displays are easily accessible.
 - Move mounting components to approximately where the structure's uprights are located. The display's center is clearly marked for easy measurement.
 - Assemble the web camera to arm supplied with the display.
 - Assemble webcam arm to the display.
 - Run power and signal connections between top and bottom sections.
 - Evenly distribute splice plates.



Display Installation

1. Verify that the lift eyes are installed and the lift eye bolts and set bolts are in place.



2. Attach the crane to the lift eyes in the top section.



3. Remove the shipping hardware from the top section.



4. Loosen and slide the black alignment bracket, circled above, up to guide the top section onto the bottom section.
5. Use a 7/16" wrench to remove the bolts that hold the lift eyes together and to the bottom section of the display. Slide the two pieces of the lift eye past each other and lift them out of the channel. Place the lift eyes in the spare parts location for future use.

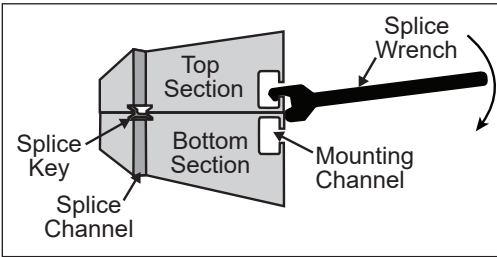


6. Lift the top section off of the truck.
7. Lower the top section onto the bottom section.

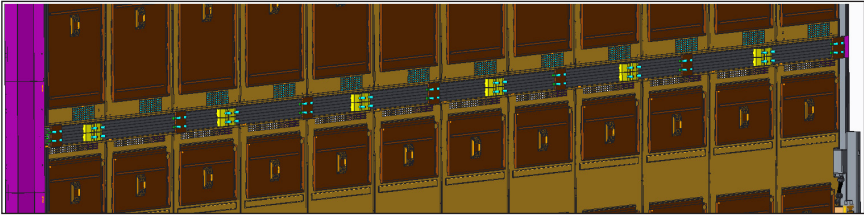
Note: Do not move vertical splice tubes into place until after the top section is secured to the bottom section to avoid damage during assembly.



8. Use the splice wrench supplied with the display to align the display sections.
9. Ensure the splice key is properly engaged into the splice channel.
10. Verify the LEDs on both display sections align in all directions between splices. If the LEDs are more than 1/4 of an LED out of alignment, adjust until properly aligned.



11. Distribute the flat splice plates evenly along the back of the display.



Note: Ensure there is a flat splice plate near each end of the display.

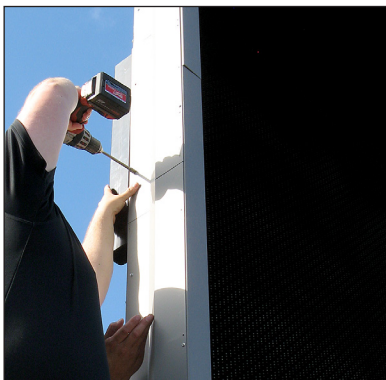
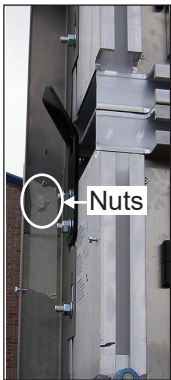
12. Position bolts so they can slide easily into place once the plate is in position. Slide into channels to secure the top half to the bottom half.
13. Use the provided torque stick, an 11/16" socket, and an impact wrench to loosen the bolts that hold the vertical splice tube in the bottom section. Consult the shop drawing for more information.



14. Slide the vertical splice tube so it is split evenly between the display sections as shown. Tighten the hardware to 75-100 ft-lbs.



15. Repeat Steps 12-14 for all vertical splice tubes.
16. Slide the border splice plates and covers into place (when equipped). Attach with supplied Tek screws and nuts for sectional displays.

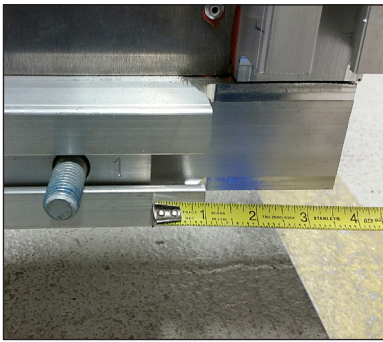
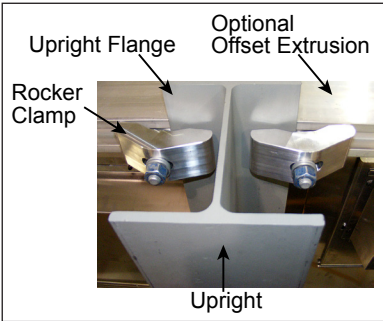


17. Connect the signal and power splice cables between the display sections. Refer to **Electrical Installation (p.2)** for more information.
18. Install the webcam and webcam arm.

19. Connect the webcam cable to the back of the display and connect the green grounding cable to the back of the display.
20. Remove the shipping braces from the bottom display section.
21. Lift the display to the structure.
22. Lower the display until it rests on all the display ledger brackets. If needed, insert metal shims until the display is resting on all ledger brackets.

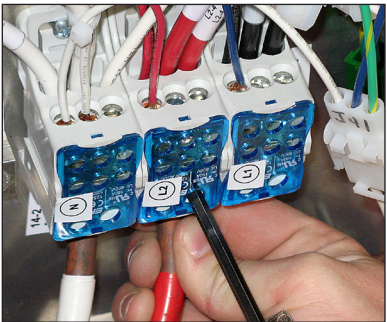
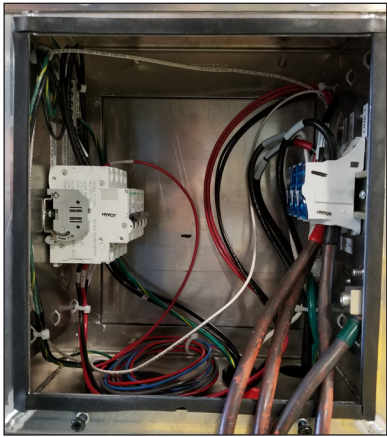
IMPORTANT NOTES:

- Make sure structure uprights are plum and level with one another.
 - Make sure there are no obstructions between mounts and structure.
 - Make sure there are no obstructions on the display mounting surface of the I-beam.
 - The display must rest completely and firmly on each ledger bracket.
23. Slide all the rocker clamps over until they engage the upright flanges as shown.
24. Tighten all of the nuts on the rocker clamps or the offset extrusion bolts to 75 ft-lbs with an impact wrench and the provided torque stick.
25. Place and tighten all remaining mounting assemblies to 75 ft-lbs.
26. Remove the crane support.
27. Locate the top border cover caps, when equipped, that are fixed to the border cover for shipping. Use supplied Tek screws that are taped to the cover for installation.

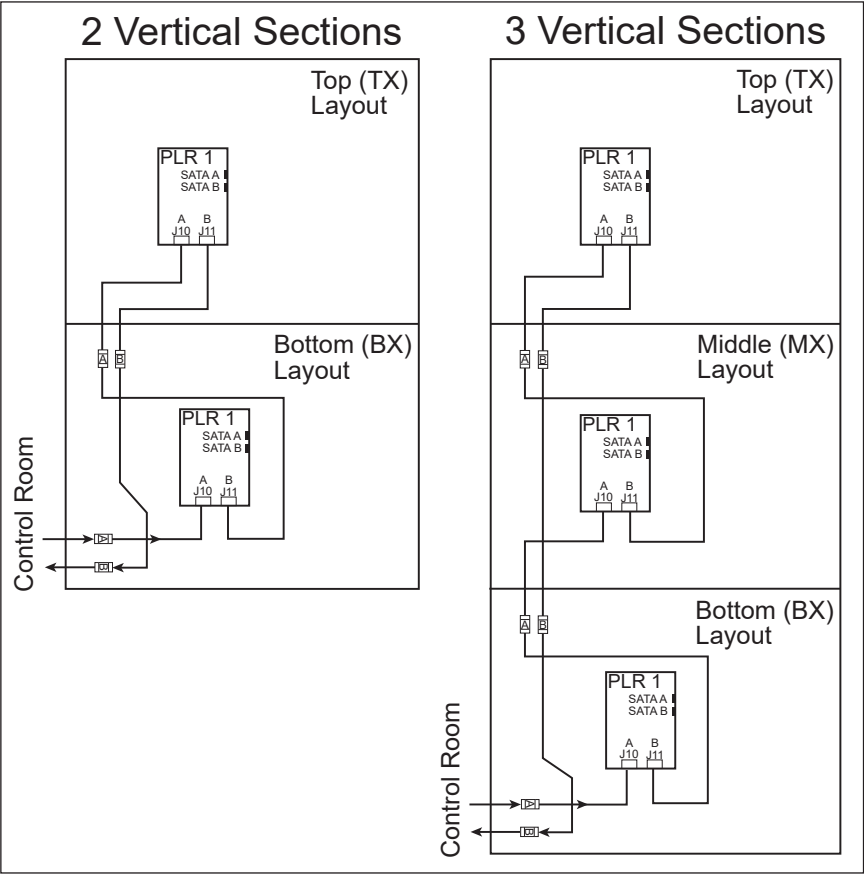


Electrical Installation

1. Refer to the display riser diagram for site-required power.
2. Run conduit from the main distribution panel (provided by customer) to the display power entrance(s) marked on the cabinet.
3. Loosen the four screws that secure the power entrance cover and lift it off of the power entrance.
4. Feed power cable through the conduit into the power entrance.
5. Connect the ground wire to the ground lug at the bottom of the power entrance box (green wire) and tighten to 45 in-lbs with a 3/16" hex head wrench.
6. Connect power line 1 (L1) to Line 1 of the tap and use a 15/64" hex head wrench to tighten to 120 in-lbs.
7. Connect power line 2 (L2) to Line 2 of the tap and use a 15/64" Hex head wrench to tighten to 120 in-lbs.
8. Connect the neutral line to the neutral tap and use a 15/64" hex head wrench to tighten to 120 in-lbs.
9. Verify the breaker for the Backlit ID is off unless there is a backlit ID.
10. Remove the cables from the conduit sleeve. Place the conduit sleeve in the holes between sections and run the signal cables through it to the bottom display section.



11. Connect the signal splice cables from the display top section. Refer to [DWG-4131265](#) for more detail.
- a. Connect Signal A on the top section PLR to signal A of the internal fiber patch panel in the section below.
 - b. Connect Signal B on the top section PLR to signal B of the internal fiber patch panel in the section below.



12. Replace and secure the power entrance cover.
13. Connect the purple/white contactor signal harness from the top section term panel to the bottom section term panel. Refer to [DWG-4626307](#) for more detail.

