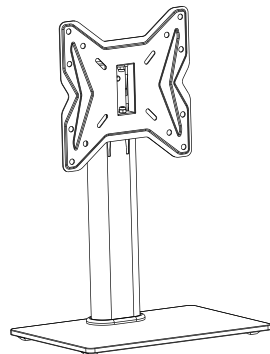




PERLESMITH

Table Top TV Stand



PSTVS07



Thank you for choosing our product! We strive to provide the best quality and services for our customers. Would you kindly share your experience on Amazon if you are satisfied? Should you have any issues, please don't hesitate to contact us.

Telephone: 800-5566-806 Mon-Fri 10am - 6pm (PST) (USA) (CAN)
Email: supportus@perlesmith.com (US/CA/DE/UK/FR/IT/ES/JP/AU)

Component Checklist



1 Monitor Bracket (x1)



2 Plastic Cover (x1)



3 Support Pillar (x1)



4 Tempered Glass (x1)



M4x15 (X4)
M-A



M4x30 (X4)
M-B



M6x15 (x4)
M-C



M6x30 (x4)
M-D



M8x15 (x4)
M-E



M8x30 (x4)
M-F



D5 washer (x4)
M-G



D8 washer (x4)
M-H



5mm spacer (x4)
M-I



10mm spacer (x4)
M-J



M8x25 (x3)
A



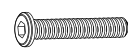
D8 washer (x3)
B



Rubber foot (x4)
C



5mm Allen key (x1)
D



M8x45 (x1)
E



washer (x1)
F

STEP 1

Add Rubber Foot to Tempered Glass

4 Tempered Glass



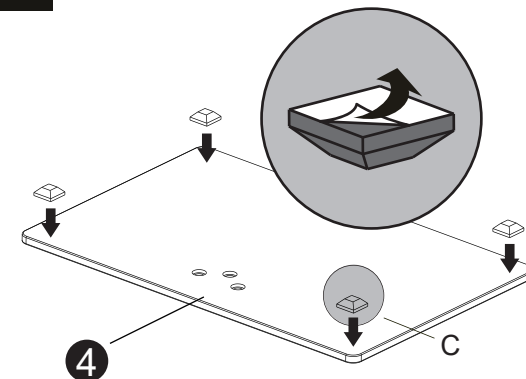
x 1

C



x 4

1.1



STEP 2

Connect the Support Pillar to Tempered Glass

4 Tempered Glass



x 1

A



x 3

3 Support Pillar



x 1

2 Plastic Cover



x 1

B

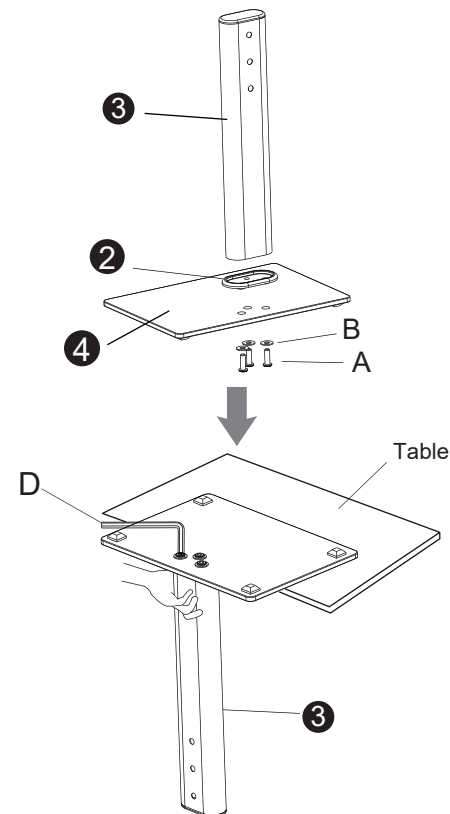


x 3

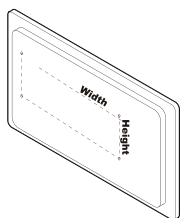
D



x 1



STEP 3 Measure VESA and Check TV screws



Measure the distance between the holes located at the back of your TV (these measures may form the shape of a square, or a rectangle) and check that these taken measures are within the VESA(*) range for this wall mount.
(*) VESA: International standard established by the TV manufacturers used to determine if LCD / LED TVs are compatible with wall mounts.

75 mm ≈ 2 7/8 in 100 mm ≈ 4 in
200 mm ≈ 7 7/8 in 300 mm ≈ 11 3/4 in
400 mm ≈ 15 3/4 in

Check TV screws

Hand thread screws into the threaded inserts on the back of your TV to determine which screw diameter (M4, M6, or M8) to use.



When attaching brackets to the flat screen, be careful not to over tighten screws and be sure that screws do not bottom out in the mounting holes.



Too Short



Too Long



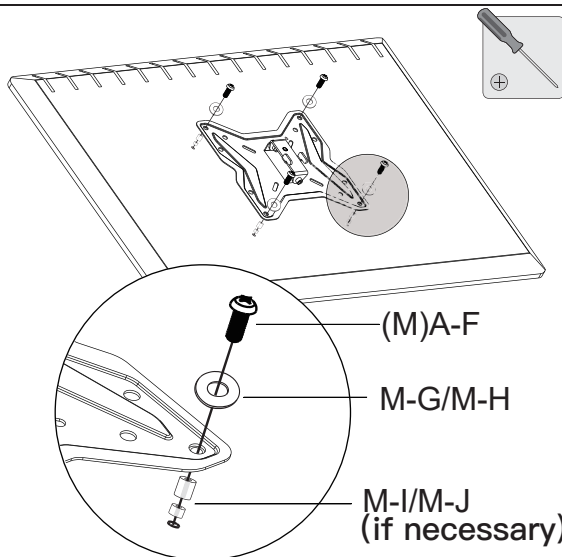
Correct



Correct

STEP 4 Attach the Monitor Bracket to a TV

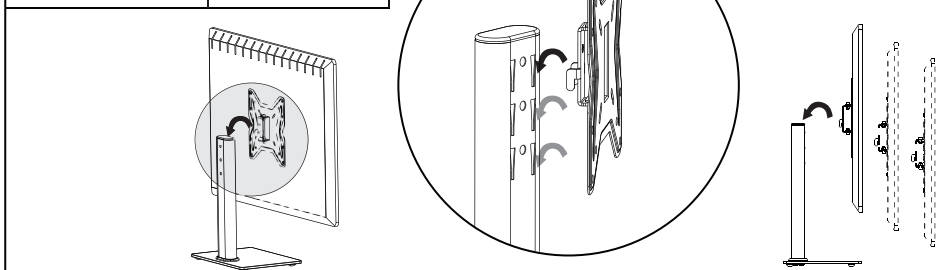
1		x 1
M-A	M4x15	x 4
M-B	M4x30	x 4
M-C	M6x15	x 4
M-D	M6x30	x 4
M-E	M8x15	x 4
M-F	M8x30	x 4
M-G	D5 washer	x 4
M-H	D8 washer	x 4
M-I	5mm spacer	x 4
M-J	10mm spacer	x 4



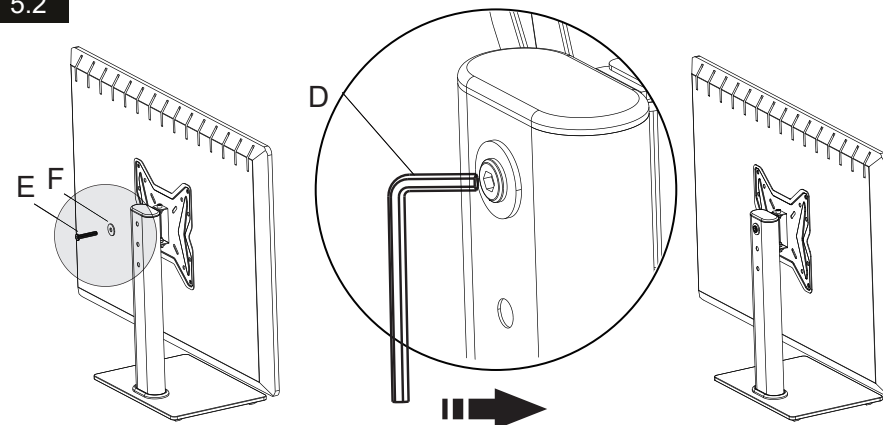
First, make sure the diameter of the bolt ((M)A - F) fits your TV. Then, please see the diagram above. You will need to thread the bolt into the TV using the correct washer (M-G/M-H) and spacer (M-I/M-J) if necessary. Please make sure the monitor bracket is vertically centered.

STEP 5 Hang TV to Support Pillar

E	M8x45	x 1	5.1
F	washer	x 1	
D	5mm Allen key	x 1	



5.2



STEP 6 Adjust Angle of TV Stand

