

Smart Watch User Manual



things prepare

When taking care of your bracelet, please remember the following tips:

- Clean the bracelet regularly, especially the inside of the bracelet, to keep it dry.
- Adjust the tightness of the bracelet to ensure air circulation.
- It is not advisable to use excessive skin care products on the wrist with the bracelet.
- If you experience skin irritation or discomfort, please stop wearing it.

Equipment type	Sports round smart watch	Battery Type/Capacity	Polymer/235mAh
display	1.32-inch full-circle color screen	Heart rate model	LC11
waterproof level	IP67	charging method	Magnetic base charging
Chassis material	Zinc alloy	platform	Realteck8763E
Wristband Material	Silicone/Steel Strap	Acoustic	Support speaker and MIC

Schematic diagram of the bracelet host1



boot

Press and hold the upper button for 3 seconds or plug in the charger to charge and turn it on.

Charge

The base is magnetically charged.



Bracelet APP download and binding

1. Download and install the APP

A. Use the mobile phone to scan--Setup APP download--, download the APP.

B. For IOS system, select App store, search and download Glory Fit; for Android system, you can select App Bora to download and install Glory Fit, or scan QR code to download.



Glory Fit




Note: The mobile phone must support Android 4.4 or I OS 9.0 or above.

2. APP binding bracelet

1. Open Glory Fit, click "Add Device" "Select Device"
Select the bracelet to be bound.
2. Click your device in the scanned device list.
3. There will be a Bluetooth pairing request in the IOS system, click the Bluetooth "pairing" Just confirm.
4. The binding is successful.



Note: Before binding the bracelet to the APP, you need to open the bracelet The interface

above,  Open state; the bracelet is

bound to  Bluetooth icon link.

The APP binding bracelet icon is as follows:

Bracelet function introduction

Power-on status:

Main screen menu interface switching, the interface shown below, etc.;



The bracelet defaults to 5 dials, and you can switch at will by long-pressing the main dial; you can also change the main dial at will in the dial market on the APP side, or you can customize the dial on the APP side.



Click the shortcut button, 3 sets of theme UI can be switched at will

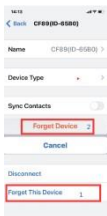
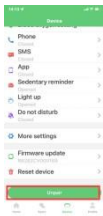
Key Function :

The up button is the main function button, and the down button enters the call page.

Unbind :

The Android phone can be disconnected from the phone by simply clicking Remove Device.

After IOS removes the device, the Bluetooth of the mobile phone needs to be ignored.



reminder function

The reminder function needs to turn on the reminder switch on the "Device" function page of the APP, and keep the mobile phone and the bracelet in the state of successful Bluetooth connection, and vibrate to remind when a message comes.

Incoming call reminder: When there is an incoming call, the bracelet will vibrate and display the name or number of the incoming call. If the APP opens the "Call Rejection" function, long press the screen to reject the call.

Reminder classification: call reminder, message reminder, sedentary reminder, smart alarm reminder, do not disturb mode, etc.

SMS reminder: When receiving a text message, the bracelet vibrates and displays an icon reminder, click to view the text message.

Application software reminder: When receiving application software messages, the bracelet vibrates and displays an icon reminder, click to view WeChat content.

Smart alarm clock: Three alarm clocks can be set.

After setting, they will be synchronized to the wristband. The intelligent alarm clock is a silent alarm clock. When the alarm rings, the wristband will vibrate moderately and support offline alarm reminders.

Sedentary reminder: The default reminder interval is one hour; in the connected state, after opening, if the user does not exercise within an hour, the bracelet will vibrate to remind the user to exercise.

Other reminders: When receiving other information such as emails, the bracelet will vibrate and display other reminder icons, click to view the content.

Charging reminder: When the bracelet is connected to the power supply or the charging stand is charging, the motor will vibrate. Pay attention to the low or full power state, and the bracelet will not vibrate.

Sleep detection function

When falling asleep, the bracelet will automatically determine to enter the sleep monitoring mode, automatically detect your deep sleep/light sleep/awake time all night, and calculate your sleep quality; sleep data is only supported on the APP side for the time being.

Note: Sleep data will only be available when you wear the bracelet to sleep.

camera control

APP side: Shake 1 to take pictures remotely; the Bluetooth connection status must be guaranteed

restore device

APP side--restore device--can delete all history records on APP and device

common problem

1. Waiting too long for the first heart rate test?

When testing your heart rate for the first time, you need to collect long signals according to different groups of people to accurately calculate your heart rate.

2. What should I do if the bluetooth connection fails?

(connection/reconnection failed or connection reconnection is slow)

Confirm whether your device is IOS9.0 and Android 4.4 and above and supports bluetooth

Teeth 5.0.

Due to the problem of signal interference in the Bluetooth wireless connection, the time of each connection may vary.

Bluetooth device interference environment

- 1. Turn off the bluetooth and turn it on again**
- 2. Close the phone background application or restart the phone**
- 3. Do not connect the phone to other Bluetooth devices or functions at the same time.**
- 4. Whether the APP is running normally in the background, if it is not in the background, it may not be able to connect.**

Can't find the bracelet?

Because the bracelet is not searched by the mobile phone during the Bluetooth broadcast, please ensure that the bracelet is powered, activated, and not bound to other mobile phones, and then move the bracelet close to the mobile phone. If it still does not work, please turn off the mobile phone Bluetooth for 20 seconds. Then restart the phone's bluetooth.

Why should I wear my bracelet tighter when measuring heart rate?

The bracelet adopts the principle of light reflection. After the light source penetrates the skin, it collects the signal reflected to the sensor to calculate your heart rate. If it is not worn tightly, ambient light will enter the sensor, which will affect the measurement accuracy.

Why don't I receive a reminder when the reminder function is turned on?

Android phone: Confirm that the phone and the bracelet are connected, and then open the corresponding permissions in the phone settings to allow the "GloryFit" APP to access incoming

calls, text messages,

Contacts, and keep "GloryFit" running in the background; if the phone has security software installed, please add "GloryFit" as trust.

Apple mobile phone: If there is no reminder after connecting, it is recommended to restart the mobile phone to reconnect.

When connecting the bracelet again, you must wait for the phone to pop up [Bluetooth pairing request], and click [Pairing] to have a reminder.

Is the bracelet waterproof?

It supports IP67 waterproof and dustproof grade (IP67 standard is 35 degrees of water, soaking in water at a depth of 1 meter for 30 minutes), and can be worn as you like when washing hands, raining, showering in cold water, and washing cars.

Does the bluetooth connection need to be always on? Is there still data after disconnection?

Before the data is synchronized, the data is retained on the band host (the data can be retained for seven days). When the Bluetooth connection between the mobile phone and the bracelet is successful, the bracelet data will be automatically uploaded to the mobile phone, please synchronize the data to the mobile phone in time.

Note: If you turn on the call and SMS reminder function, you must keep the Bluetooth connected, and the alarm clock reminder supports offline.



warn:

Please consult your doctor before starting new sports. Although the smart bracelet can monitor real-time dynamic heart rate, it cannot be used for any medical purpose.

You can contact our after sales team to assist you with connection or any questions, thank you

WhatsApp:+8618794363304

GA99805@163.com