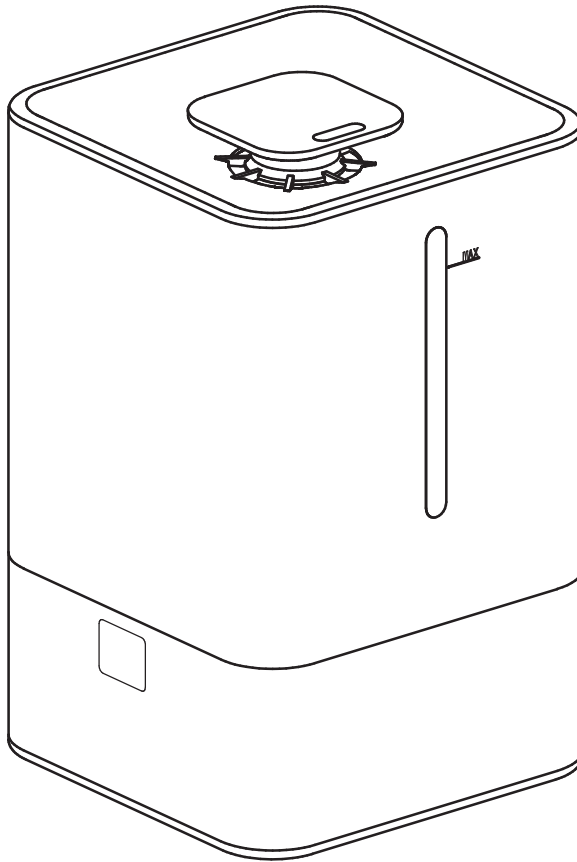


veva™ Humidifier

advanced filters



2-in-1 Humidifier & Diffuser
Model: HS-SC300-A01

User Manual

Content

Specifications and Important Safety Information	01
Get to Know Your 2-in-1 Humidifier	02
Reading the Control Panel.....	03
Using Your Humidifier	04
Adding Aromatherapy	05
Cleaning & Maintenance	06
Troubleshooting.....	07

Specifications

Model No.	SC300-A01
Product Size	200*300*321mm
Rated Voltage	120V
Rated Frequency	60Hz
Rated Power	25W
Rated Humidification Amount	210ml/h
Water Tank	4.5L
Noise Level	38dBA
Humidifying Efficiency Class	D

Includes

(1) VEVA™ Humidifier
(1) User Manual

Essential Oil Not Included

Important Safety Information

**READ THIS USER MANUAL CAREFULLY BEFORE USING THIS APPLIANCE
AND SAVE IT FOR FUTURE REFERENCE.**

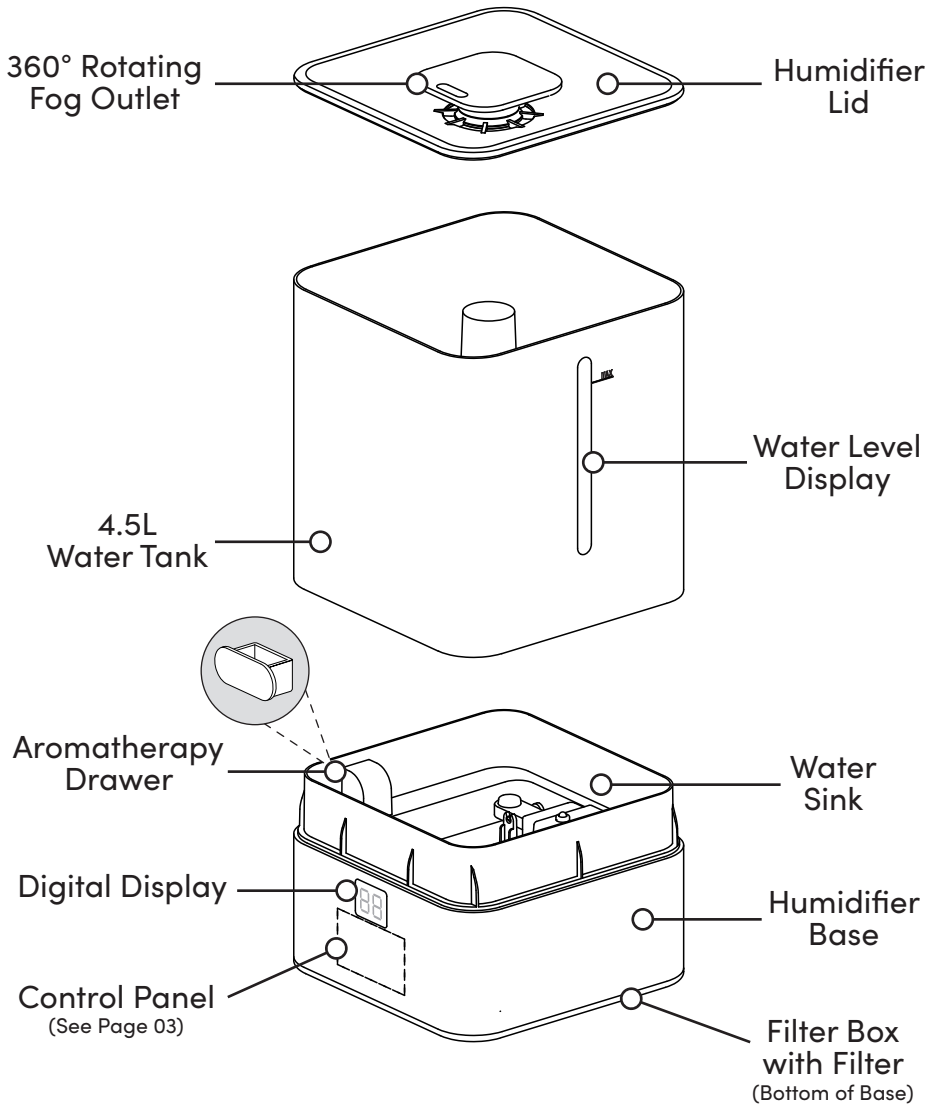
X WARNING

- Do **NOT** touch plug or outlet with wet hands or position machine near water.
- Do **NOT** add essential oil directly to the water tank. Only add essential oil to the aromatherapy drawer (see Page 05).
- Do **NOT** cover fog outlet.
- Unplug before adding water.
- Do **NOT** exceed fill line in the water tank.
- Do **NOT** add water to the fog outlet.
- Use distilled water.
- Keep machine temperature between 6°C / 43°F and 40°C / 104°F.
- Keep relative humidity below 80%.








IMPORTANT SAFETY NOTE:

This appliance has a polarized plug (one blade is wider than the other). To reduce the risk of electric shock, this plug is intended to fit in a polarized outlet only one way. If the plug does not fit fully in the outlet, reverse the plug. If it still does not fit, contact a qualified electrician. Do not attempt to defeat this safety feature.

Get to Know Your 2-in-1 Humidifier



Reading the Control Panel

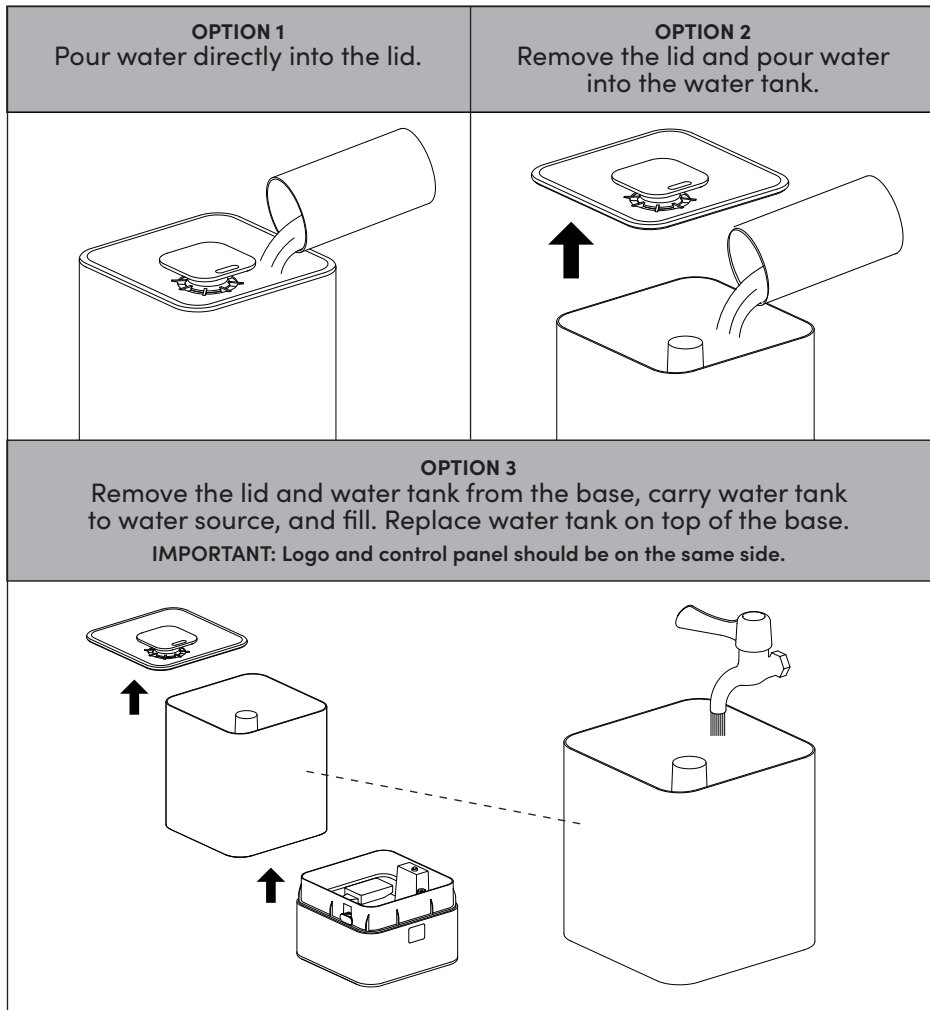
 Digital Display	<ul style="list-style-type: none"> ▶ Numbers: Shows timer, humidity percentage, and fog level. ▶ P1: Problem Code 1 (out of water). ▶ Steady Line: Humidifier is measuring humidity. ▶ Flashing Line: Humidifier is adding water.
 ON/OFF	<p>Press button to start humidifier. Press again to return to standby mode.</p>
 Fog Level	<p>Press to cycle through fog levels (low, medium, high).</p>
 Light	<p>Press to turn on and off.</p>
 Timer	<p>Press to cycle through timer options: 1h, 2h, 4h, 8h, and cancel.</p>
 Constant Humidity	<p>Press once for a constant stream of humidity. Press again to cycle through percentage of humidity from 40-60%. Do not exceed 80% relative humidity.</p>
 Sleep Mode	<p>Press button to turn off display and light. Press again to turn on.</p>

Using Your Humidifier

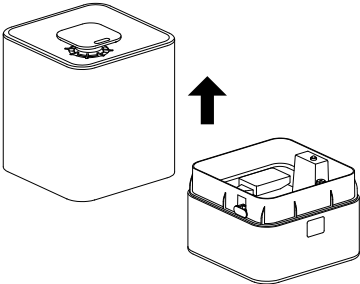
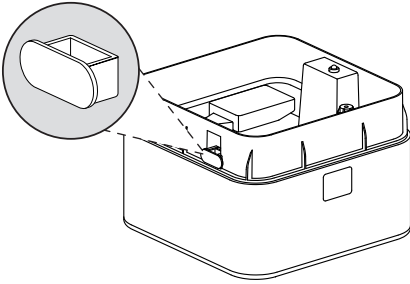
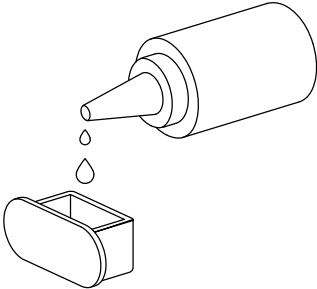
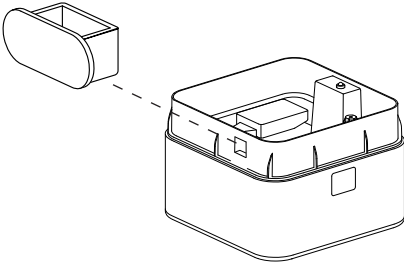
For First Time Use

Before first use, remove white sponge from the water tank and throw away.

How to Add Water (Distilled Water is Recommended)

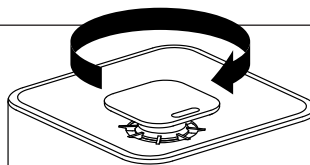


Adding Aromatherapy

<p>STEP 1 Remove water tank.</p>	<p>STEP 2 Slide aromatherapy drawer from humidifier base.</p>
	
<p>STEP 3 Add essential oil to pad in aromatherapy drawer.</p>	<p>STEP 4 Slide aromatherapy drawer back into the humidifier base.</p>
	

Fog Outlet Direction Adjustment

Rotate 360° nozzle to desired direction.



Cleaning & Maintenance

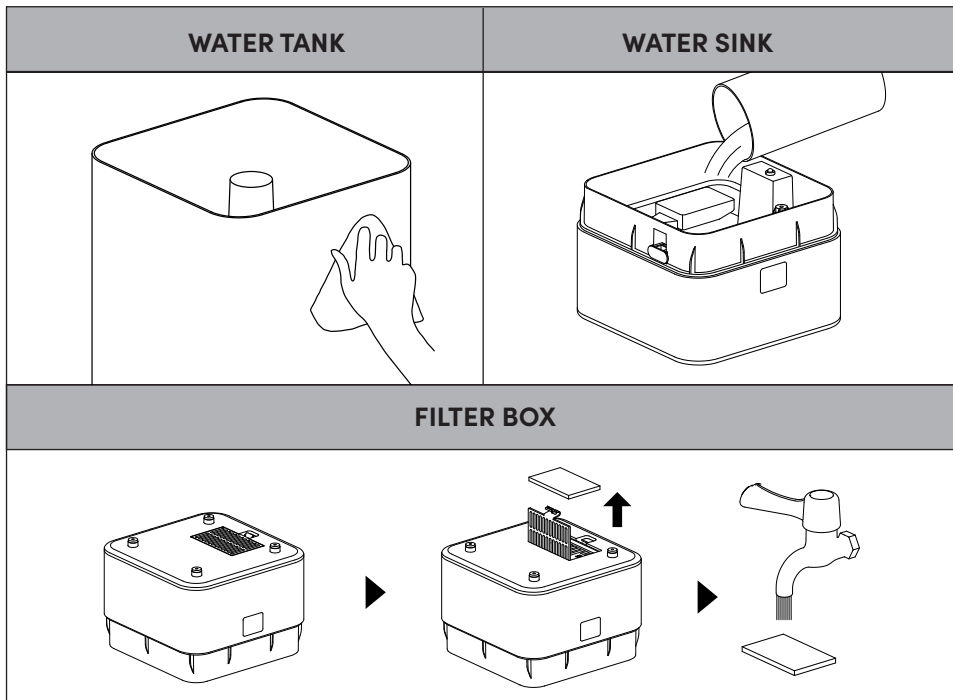
A Note on Water

Tap water often contains minerals such as calcium and magnesium, which can collect on your humidifier's sink and other components.

To prolong the life of your humidifier and ensure consistent functionality, **distilled water is recommended.**

! IMPORTANT

- Always unplug before cleaning.
- Clean every 2-3 weeks.
- Clean water tank with soft, wet towel.
- Clean water sink with water or detergent.
- Remove filter from filter box, wash, and dry.



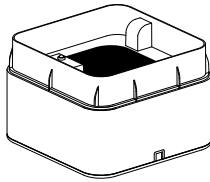
Troubleshooting

PROBLEM	POSSIBLE CAUSE	SOLUTION
Not Working	Not plugged in properly. Needs water or water tank is not properly installed.	Replug into outlet. Add water to the tank. Reposition water tank to correct position.
Unpleasant Odor Coming from the Fog Outlet	Water or tank are dirty.	Clean water tank and sink, then add new water (see Page 06).
Fog Outlet is Not as Strong as it Should Be	Filter is dusty.	Clean filter.
Loud, Unpleasant Noise	Humidifier is not sitting on a horizontal level.	Ensure humidifier sits on a flat, horizontal surface.
"P1" Shows on Display	Lack of water in tank.	Add water to tank (see Page 04).
White Residue Collecting Inside Sink & Tank	Tap water has most likely been used, resulting in mineral deposits.	Clean thoroughly and use distilled water.

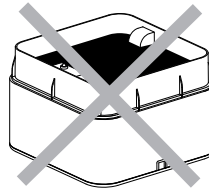
Troubleshooting Continued

WATER LEAKAGE

Small particles in the water can move through the filter bracket into the seal ring, potentially creating water leakage. This can cause high water levels and fog will not be able to come out from the humidifier. To fix this, unplug the machine, pour out the water from the base, and clean the water tank.

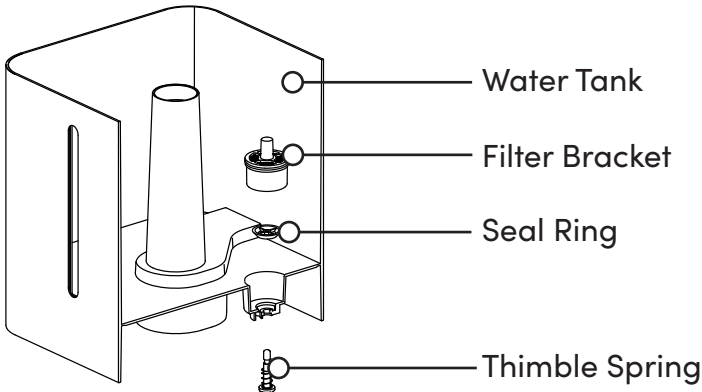


Normal Water Level



High Water Level

If the leakage in the water tank leads to high water levels, or you have stopped using the humidifier for a long period of time, disassemble and clean the parts in the water tank (see below). Then reassemble and use.



For questions or additional assistance, please email us at
support@vevafilters.com

