

INSTALLATION INFORMATION

This section of the manual covers some of the installation issues that a service technician may need to know when servicing a Wolf range or rangetop. If additional installation information is needed after reviewing this section of the manual, please refer to the installation guide or contact the Wolf Appliance Customer Service Department.

Gas Pressure:

NOTE: All Wolf gas appliances are manufactured to work with natural gas, but Wolf gas appliances can be converted to work with LP gas (Liquid Propane gas).

Natural Gas Manifold Pressure

Standard natural gas orifices on the appliance are set for 5" WC (Water Column Pressure).

Liquid Propane Manifold Pressure

The standard propane gas orifices in a conversion kit will be set for 10" WC (Water Column Pressure).

Gas Supply Pressure

- Maximum line pressure for natural gas and LP is 14" WC; 1/2 psi (3.5 kPa).
- Minimum line pressure for natural gas is 7" WC.
- Minimum line pressure for LP gas is 11" WC.

Gas Pressure Regulator

To control and maintain a uniform gas pressure in the gas manifold, Wolf gas appliances must be connected to the gas supply line through a pressure regulator. The burner orifices are sized for the pressure delivered by the regulator. Never attempt to operate a Wolf gas appliance without the use of the proper pressure regulator.

⚠ CAUTION

The maximum gas supply pressure to the regulator should never exceed 14" WC (Water Column Pressure); 1/2 psi (3.5kPa).

Leak Testing:

⚠ WARNING

NEVER USE OPEN FLAMES TO CHECK FOR GAS LEAKS. ONLY USE A COMMERCIAL LEAK DETECTION SOLUTION OR SOAP SUDS AROUND GAS CONNECTIONS TO CHECK FOR LEAKS. DO NOT USE LIQUID NEAR VALVE STEMS.

Electrical Requirements:

A Wolf gas appliance requires 110 to 120 volts AC and a 15 ampere dedicated circuit breaker to operate properly.

The power supply cord provided on the appliance is equipped with a 3-prong (grounding) plug. The installation site must be equipped with a properly grounded 3-prong receptacle. If the electric receptacle or the power cord are not properly grounded and polarized, this could cause a shock hazard and the appliance may experience ignition problems. (See Figure 3-1)

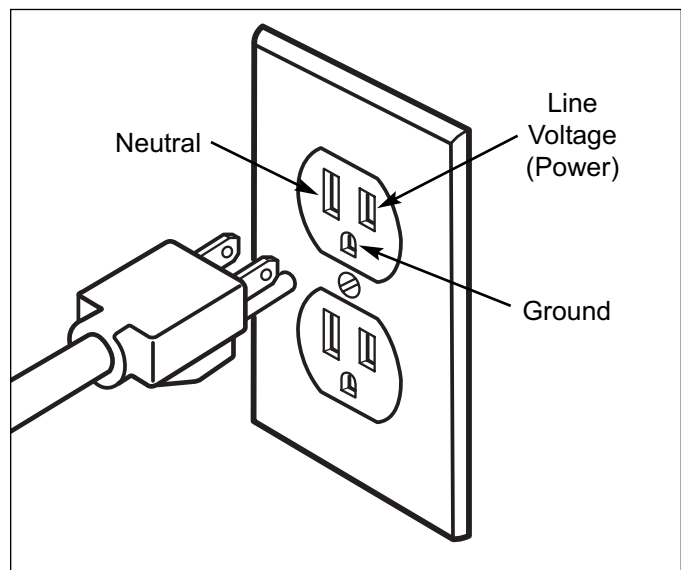


Figure 3-1. Proper Polarity at Electric Receptacle

⚠ WARNING

TO AVOID SHOCK HAZARD, NEVER REMOVE THE GROUND PRONG FROM THE PLUG OF THE POWER SUPPLY CORD.

Unit Blocking:

Wolf ranges can tip forward under certain load conditions. The anti-tip wall bracket must be attached to the wall behind the appliance so that it is directly above the bottom rear brace when the range is fully installed. (See Figure 3-2)

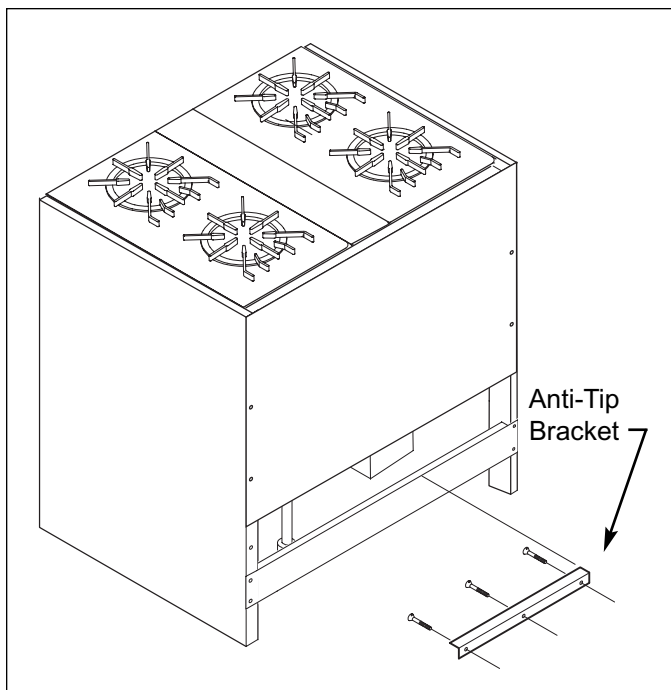


Figure 3-2. Anti-Tip Wall Bracket Installation

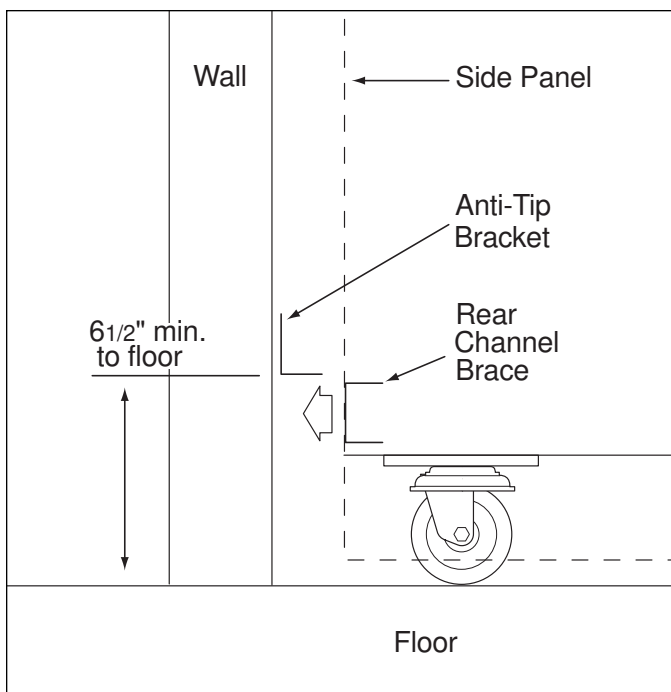


Figure 3-2. Anti-Tip Wall Bracket Installation

Unit Leveling:

Wolf ranges can be leveled at the front by adjusting the 3" (76 mm) adjustable front legs. (See Figure 3-3)

In order to level the rear of the unit, use the caster wrench (p/n 803239), to rotate the 2-5/16" (59 mm) nut clockwise to raise or counterclockwise to lower the unit. (See Figure 3-4)

Use shims to level a wolf rangetop.

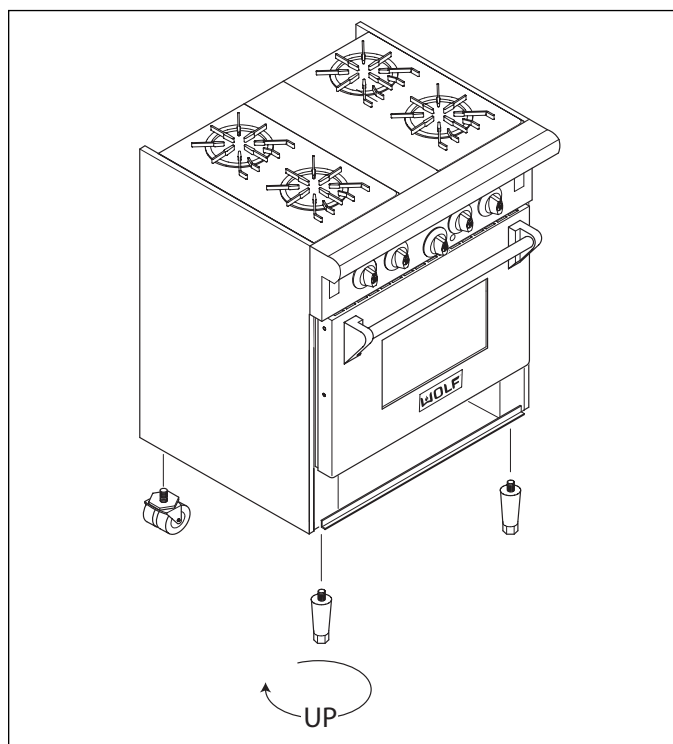


Figure 3-3. Unit Leveling, Front Leveling Leg

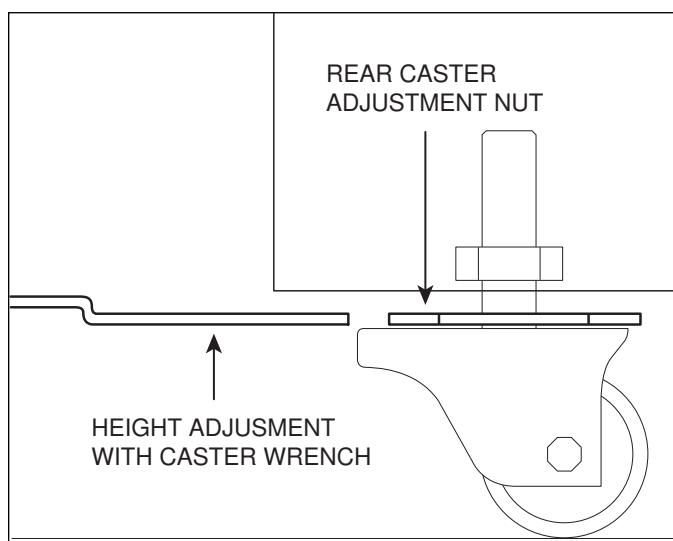
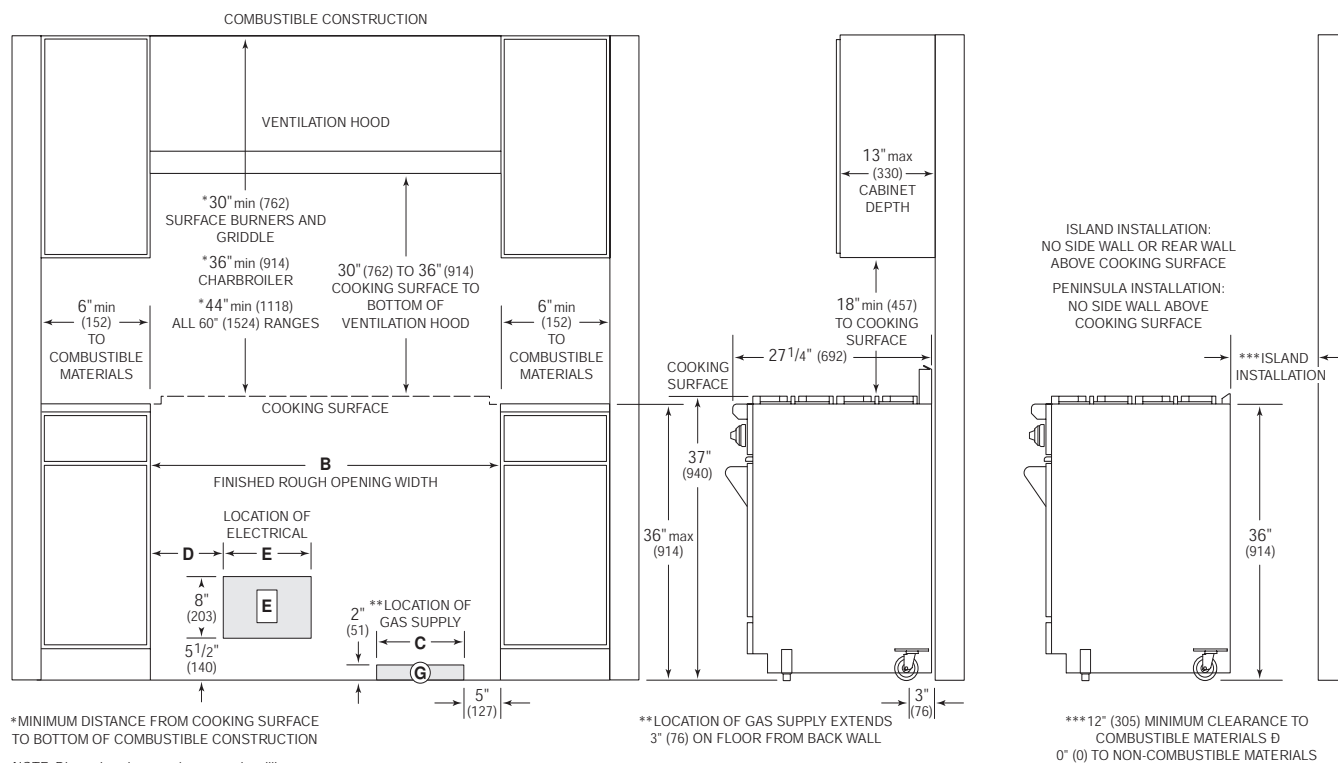
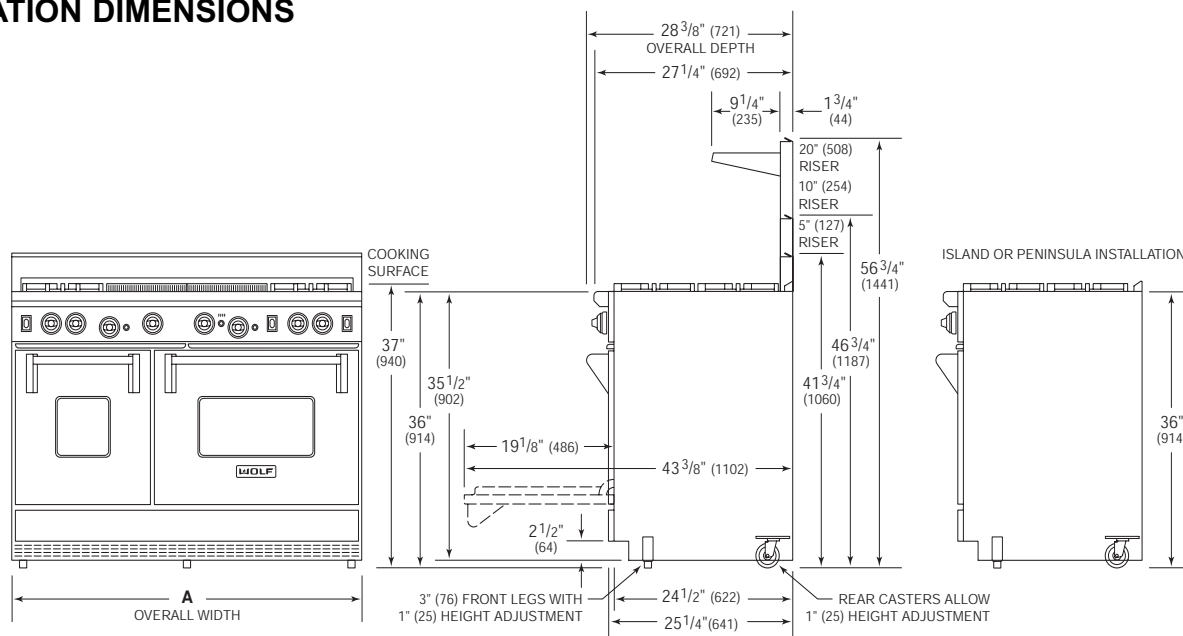


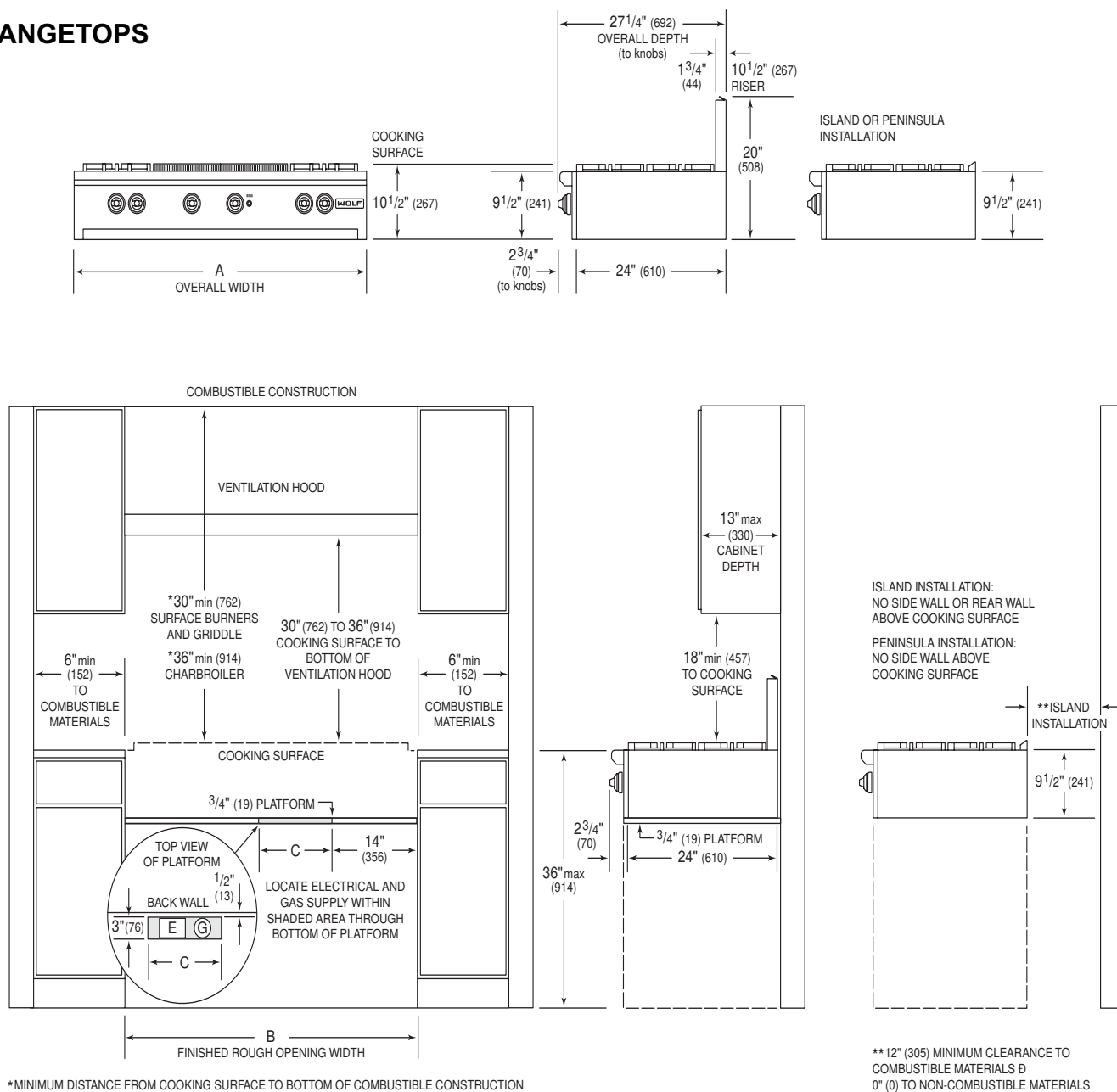
Figure 3-4. Unit Leveling, Rear Caster Adjustment

INSTALLATION DIMENSIONS

RANGES



	30" Range	36" Range	48" Range	60" Range
A Overall Width of Range (width may vary to +1/8")	30"(762)	36"(914)	48"(1219)	60"(1524)
B Finished Rough Opening Width	30 1/8"(768)	36 1/8" (921)	48 1/8"(1226)	60 1/8"(1530)
C Location of Gas Supply (within shaded area)	12"(305)	10"(254)	12"(305)	12"(305)
D Location of Electrical	10"(254)	10"(254)	26"(660)	10"(254)
E Location of Electrical (within shaded area)	12"(305)	12"(305)	12"(305)	12"(305)

INSTALLATION DIMENSIONS
RANGETOPS


	36" Rangetop	48" Rangetop
A Overall Width of Rangetop	36" (914mm)	48" (1219mm)
B Finished Rough Opening Width	36 1/8" (921mm)	48 1/8" (1226mm)
C Location of Gas Supply and Electrical	8" (203mm)	16" (406mm)