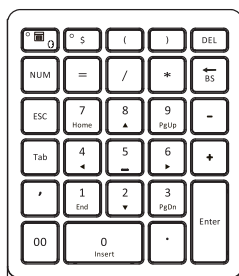
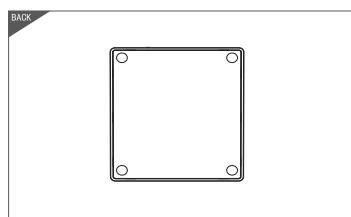
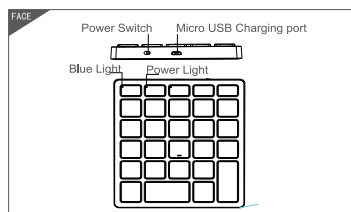


Bluetooth Numeric Keypad User manual

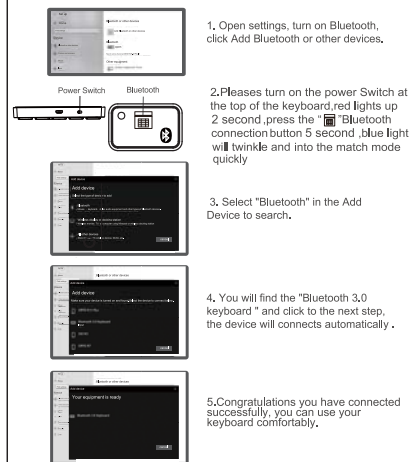


Caution: To use this device properly, please carefully read the user manual.



Compatible System
Windows, Android,

Bluetooth pairing connection



Remarks: After connecting successfully, next time you don't need to pair again, just open the power switch of Bluetooth keypad and "Bluetooth" of tablet PC, the BT keyboard will search the same device and connect automatically.

Technical Specifications

Keyboard size: 115.43*102.88*11.4 mm
Weight: 110 g Standby current: 0.8~3 mA (light on)
Working distance: 8 m Sleep current: $\leq 70 \mu A$
Keyboard layout: 28 Keys Awaken way: Press any key
Working voltage: 3.7 V
Use key the working current: 2~5 mA

Status Display LED

- Connect: Please turn on the power Switch at the top of the keyboard, red lights up 2 second, press the Bluetooth connection button 5 second, Blue light will twinkle and into the match mode quickly.
 - Low Voltage Indication: When the voltage is below 3.3 V, red light twinkles.
 - NUMLOCK: Blue
- Remarks: In order to prolong the life span of the battery, when you do not use the keyboard for a long time, please switch off the power.
- The red LED indicator will be ON while charging. After fully charged the LED will turn off.

Troubleshooting

Please contact the after-sales service.

Copyright

It is forbidden to reproduce any part of this quick start guide without the permission of seller.

Safety instructions

Do not open or repair this device. Do not use the device in a damp environment. Clean the device with a dry cloth.

Warranty

The device is provided with one-year limited hardware warranty from the purchase day.

Keyboard Maintenance

- Please keep the keyboard away from liquid or humid environment, saunas, swimming pool, steam room and don't let the keyboard get wet in the rain.
- Please don't expose the keyboard at too high or too low temperature condition.
- Please don't put keyboard under sun for a long time.
- Please don't put keyboard close to the flame, such as cooking stoves, candles or fireplace.
- Avoid sharp objects scratching products, timely to recharge products to ensure the normal use.

FAQ

- The tablet PC can't connect the BT keyboard?
 - At first check the BT keyboard is into match code state, then open the tablet PC Bluetooth searching.
 - Make Sure that battery power of the BT keyboard is not too low, as it may lead to disconnection between 2 devices when battery power is too low. Please charge the keypad in time via supplied micro USB charging cable.
- The keyboard indication light always flashing when use?

Keyboard indication always flashing when use, it means the battery will be power off, please charge the keypad in time via supplied micro USB charging cable.
- The tablet PC display BT keyboard is disconnected?

The BT keyboard will be into sleeping mode to save the power if not used for a while, you can wake it up by pressing any key on the keyboard, then you can use it again.

Sleep Mode

With no operation for 20 minutes, the number pad will go into sleep mode. Press any key and wait for 3 seconds to wake up the keypad. During sleep mode, LED indicator will turn off automatically.



说明书 尺寸: 120*83mm

材质: 100克书纸 印刷: 黑白双面印刷 风琴折

备注: _____

版本: V2(2020.03.30) 制作: 陈旭 审核: 陈旭

NOTE: This equipment has been tested and found to comply with the limits for a Class B digital device, pursuant to part 15 of the FCC Rules. These limits are designed to provide reasonable protection against harmful interference in a residential installation. This equipment generates uses and can radiate radio frequency energy and, if not installed and used in accordance with the instructions, may cause harmful interference to radio communications. However, there is no guarantee that interference will not occur in a particular installation. If this equipment does cause harmful interference to radio or television reception, which can be determined by turning the equipment off and on, the user is encouraged to try to correct the interference by one or more of the following measures:

- Reorient or relocate the receiving antenna.
- Increase the separation between the equipment and receiver.
- Connect the equipment into an outlet on a circuit different from that to which the receiver is connected.
- Consult the dealer or an experienced radio/TV technician for help

Changes or modifications not expressly approved by the party responsible for compliance could void the user's authority to operate the equipment.

This device complies with Part 15 of the FCC Rules. Operation is subject to the following two conditions:

- (1) this device may not cause harmful interference, and
- (2) this device must accept any interference received, including interference that may cause undesired operation.