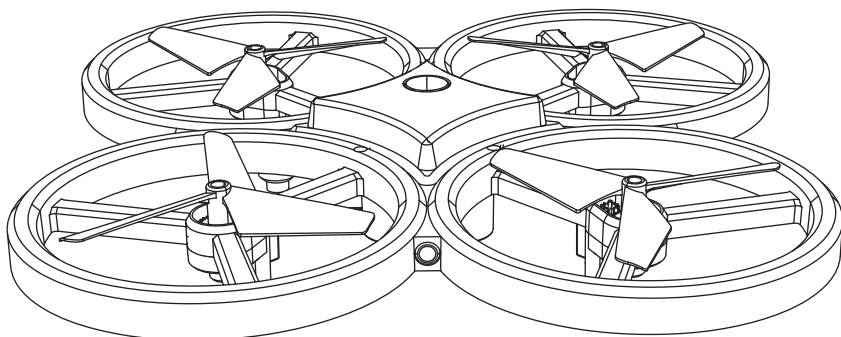


INDUCTION AIRCRAFT OPERATING INSTRUCTIONS



RC Technical Parameters

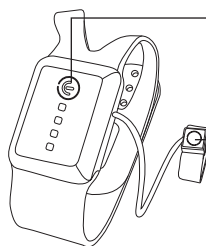
- Battery capacity: 3.7V 150mAh
- Charging time: about 30 minutes
- Use time: about 10 hours
- When the remote control is motionless, it will be automatically turned off after 1 minute.
- When the remote control enters into the low-voltage protection, the indicator light flashes slowly, and it unable to be used and need to charged.

Aircraft Technical Parameters

- Length: 170mm
- Width: 170mm
- Height: 38mm
- Battery capacity: 3.7V 550mAh
- Charging time: about 60 minutes
- Flight time: about 6 minutes
- Remote distance: 80 meters

Thank you for your trust purchasing the product. The user instruction shall be read carefully before use and well kept for future use. The real flying object may be slightly different from the picture due to the production error.

TRANSMITTER



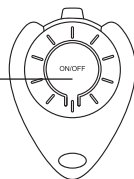
Main body button:

- 1.the first time short press for boot up
- 2.the second time short press for reset
- 3.short press is landing slowly function in flight
- 4.long press the aircraft for 1 second to emergency stop, 3 seconds to turn off

Finger button

- 1.the first time short press for take off to 1.2 meters
- 2.short press is roll function in flight
- 3.short press quickly 3 times in flight to enter into the infrared obstacle avoidance mode
- 4.long press the remote control to switch to (throttle and steering) function

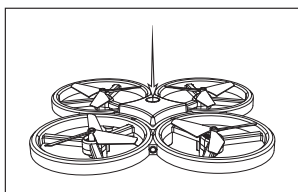
One key landing



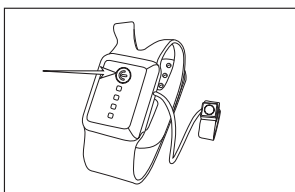
Gravity Sensor Remote Control

Water Droplet Remote Control

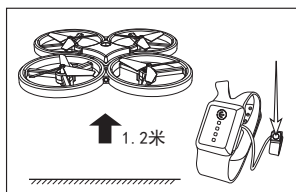
READY FOR FLY



1. Please put the aircraft on the ground. Long press the switch for 1 second to turn on, the indicator lights change from flash quickly to flash slowly. Waiting for code.

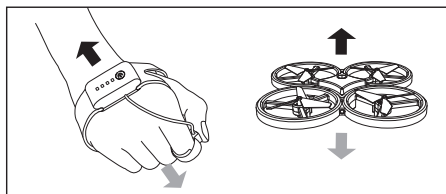


2. Short press the Gravity sensor remote control switch, the remote control indicator light flashes slowly 3 times at the same time and then turns into long light, indicating the end of the code. The aircraft indicator light change from flash slowly to long light, indicating that the code is successful.

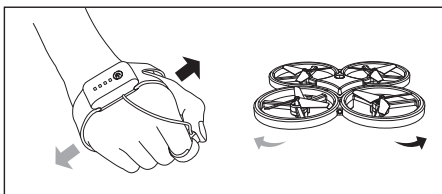


3. Short press the remote control finger button for take off to 1.2 meters.

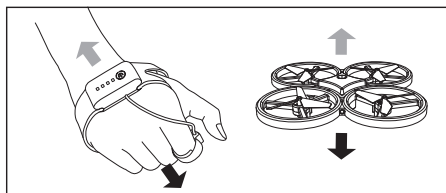
HOW TO CONTROL



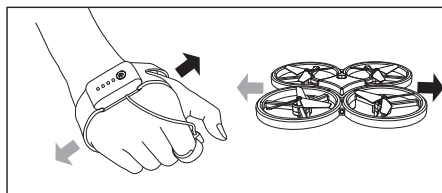
1. Long press the remote control finger button and let the hand up or down, the aircraft will ascend or descend accordingly.



2. Long press the remote control finger button and let the hand to the left or right, the aircraft will turn left or turn right accordingly.



3. Loosening the remote control finger button and let the hand down or up, the aircraft will forward or backward.

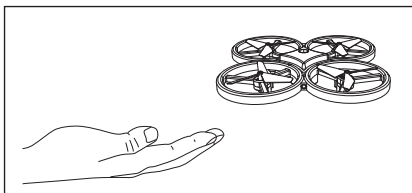


4. Loosening the remote control finger button and let the hand to the left or right, the aircraft will left side or right side.

MAIN FUNCTION

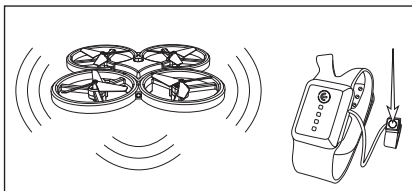
1.Hand Throwing Induction Mode

Please put the aircraft on the ground. Long press the switch for 1 second to turn on. The indicator lights change from flash quickly to flash slowly. Pick up the aircraft and throw it out. The aircraft will hover in the air. Short press the water droplet remote control, the aircraft landed slowly on the ground to stop flying. Short press power button is reset function. Long press the switch for 1 second to turn off.



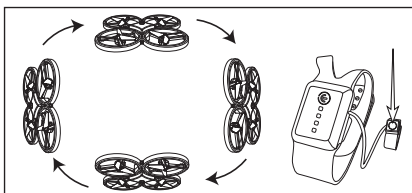
2. Infrared Obstacle Avoidance Mode

There is no infrared obstacle avoidance function by default when the aircraft turned on. Press finger button 3 times quickly in flight to starting infrared obstacle avoidance mode. The aircraft indicator light flashes quickly 3 times. Press finger button 3 times quickly again to exit infrared obstacle avoidance mode.



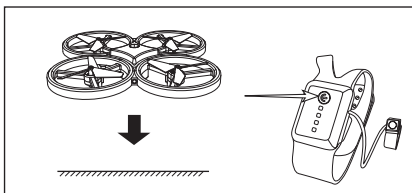
3. Rolling

Short press the remote control finger button in flight, the aircraft indicator light flash quickly, and you can tilt the remote control to roll accordingly. When the remote control is motionless for 2 seconds, it will exit the roll function.



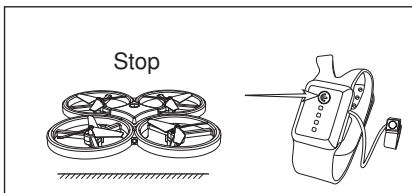
4. Slow Descent

Short press the remote control main body button in flight, the aircraft will land slowly on the ground to stop flying.



5. Emergency Stop

When the aircraft lost control in flight, long press the the remote control main body button for 1 second to emergency stop.



6. The Low-Voltage Protection Function

When the aircraft enters into the low-voltage protection, the indicator light flashes slowly, and it landed slowly on the ground after 30 seconds to stop flying.

Note: Long press the switch for 1 second to turn off. Long press the remote control main body button for 3 seconds to turn off.

MAINTENANCE

1. The quadcopter shall be cleaned regularly with clean soft cloth.

2.