

Driving Recorder D55

This product uses high performance chip, provide high definition video, seamless dynamic picture. Through the European CE, American FCC strict certification, support HD1080P and 2K real HD camera. Please read this manual carefully before use. We hope this product can meet your needs and serve you for a long time!

1. Appearance and key function description



1. Power key / OK key
2. Upper key
3. Lower key
4. Single key
5. Type-C interface
6. Rear pull camera interface
7. Front record camera
8. Interior camera
9. TF card slot

1. power switch

Function 1: switch machine function

In the shut down state, press [power button] for 2 seconds to turn on the power supply and the machine automatically.

Press [power button] long and keep it for 2 seconds to automatically save the video file and user setting and shut down. Function 2: Turn off the display screen function

At the power state point press [Power Key] The machine will turn off the display and again press on the display.

2. On the key

Function 1: In the playback interface, short press to switch the video files

Function 2: In the video preview screen, short press to switch before and after the video window

Function 3: in the system setting interface, short press to switch Settings

Function 4: Long press to open or close the WFi

3. Under the key

Function 1: In the playback interface, short press to switch the video files

Function 2: In the video preview screen, short press to open or close the recording

4. function key

Function 1: Short press for the open menu

5. OK key

Function 1: Short press to start recording or stop recording

Function 2: In the system setting interface, short press to confirm the Settings

6. Playback key

Function 1: Short press to start taking photos

Function 2: Long press into the playback interface

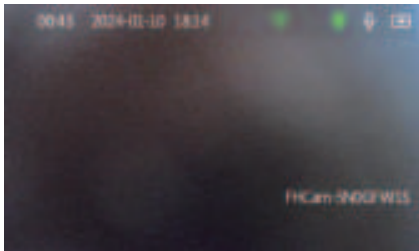
7. Add Lock key

Short press to lock the video, and enter the lock video

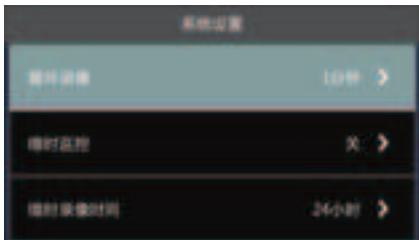
II. Functional Interface

Without using the button operation, you can click the button to enter the following interface.

(1) Video preview



(2) System Setup Interface



- Cycle video recording: turn off, 1 minute, 2 minutes, 3 minutes.
- Scale reduction monitoring: off, 1 second, 2 seconds, 3 seconds.
- Compact video time: off, 12 hours, 24 hours, 48 hours.
- Video and audio: off, open.
- Collision sensitivity: off, low, medium and high.
- Parking mode: off, low, medium and high.
- Time watermark: close, open.
- Rear mirror: off, preview mirror, video mirror, all mirror.
- License plate number: close, open.
- Screen sleep: off, 10 seconds, 30 seconds, 60 seconds.
- Key sound: on and off
- Speaker volume: off, low, medium and high
- Switch machine sound: on and off
- Language: simplified Chinese, traditional Chinese and many languages.
- Time setting: the system time setting.
- Speech recognition: off, open. (Voice control commands: open the screen, close the screen, I want to take photos, open the recording, turn off the recording, open the record, open the record, view all, video lock, open the hot spot, close the hot spot)
- Mobile phone interconnection: close, open
- Disk format: confirm cancel.

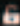

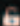

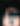

Note: Formatting will delete all files in the memory card (including protected files).

After formatting, the file cannot be restored. Please back up the important file before operation.

- Restore the factory Settings: confirm cancel. Select 9 Confirmation 9 will restore the system defaults.
- About: Version information.

(3) Playback interface

文档管理

状态	名称	权限-组别	操作
●	20240210_182557_文件		 
●	20240210_183357_文件		 
	20240210_183449_文件		 

(4) APP two-dimensional code



3. Installation guide

1. Turn off the car engine.
2. Insert the TF card into the recorder card slot.
[Note] Please use a high-speed TF card (above Class10) with a capacity not less than 512MB, and the maximum TF card supports 64GB.
3. Attach the recorder to the original rearview mirror of the car.
4. Insert the car charger into the car cigarette lighter.
5. Use the charging extension cord to connect the USB port of the recorder to the car charger. [Note] The charging extension line can be laid along the edge of the car windshield when wiring.
6. Install the rear camera on the rear part of the vehicle, and pay attention to the direction when installing. Wiring can be laid along the ceiling of vehicles. After the installation, the rear plug is connected to the rear camera interface of the recorder.
7. Adjust the lens position to ensure that the lens remains level with the ground.
8. Start the engine and check that the machine is being installed correctly.

[Note] When the machine is installed correctly, the system work

indicator is lit; the machine starts into the recording state and the video indicator flashes. Please check whether the picture on the screen is normal. If the picture is inverted, please contact us in time.

FCC Warning

This device complies with part 15 of the FCC Rules. Operation is subject to the following two conditions: (1) This device may not cause harmful interference, and (2) this device must accept any interference received, including interference that may cause undesired operation.

Any Changes or modifications not expressly approved by the party responsible for compliance could void the user's authority to operate the equipment.

Note: This equipment has been tested and found to comply with the limits for a Class B digital device, pursuant to part 15 of the FCC Rules. These limits are designed to provide reasonable protection against harmful interference in a residential installation. This equipment generates uses and can radiate radio frequency energy and, if not installed and used in accordance with the instructions, may cause harmful interference to radio communications. However, there is no guarantee that interference will not occur in a particular installation. If this equipment does cause harmful interference to radio or television reception, which can be determined by turning the equipment off and on, the user is encouraged to try to correct the interference by one or more of the following measures:

- Reorient or relocate the receiving antenna.
- Increase the separation between the equipment and receiver.
- Connect the equipment into an outlet on a circuit different from that to which the receiver is connected.
- Consult the dealer or an experienced radio/TV technician for help.

This equipment complies with FCC radiation exposure limits set forth for an uncontrolled environment. This equipment should be installed and operated with minimum distance 20cm between the radiator & your body.