

**BEFORE RETURNING THIS PRODUCT TO THE STORE** for any reason,  
please visit [www.arris.com/selfhelp](http://www.arris.com/selfhelp) for assistance.



Place the Product specific  
label here

© 2024 Vantiva USA, LLC. SURFboard and SURFboard logo are registered trademarks of Vantiva USA LLC. ARRIS and the ARRIS logo are registered trademarks of CommScope and used under license by Vantiva USA LLC. All rights reserved. Android, Google Play and the Google Play logo are trademarks of Google LLC. App Store and the Apple logo are trademarks of Apple Inc., registered in the U.S. and other countries.



ARSVD01823-b



Quick Start Card

**SURF**BOARD<sup>®</sup>  
Cable Modem

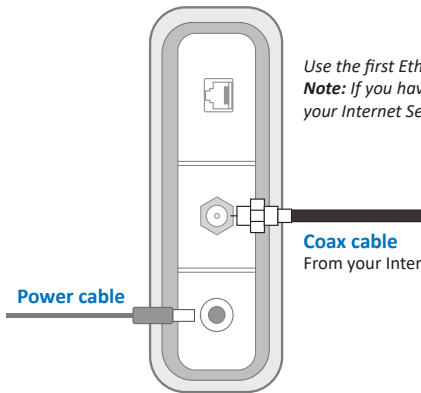


[www.arris.com/selfhelp](http://www.arris.com/selfhelp)

1

Unbox the device; plug in the power cable (included) and a coax cable (not included).

**SURFboard  
cable modem**



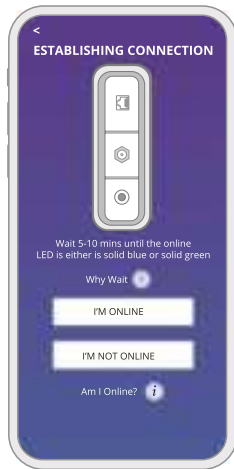
Use the first Ethernet port to connect your device.  
**Note:** If you have a second Ethernet port, contact your Internet Service Provider to activate.

**Coax cable**

From your Internet Service Provider

2

Download and install the **SURFboard Central** mobile app to set up and manage your device.



Scan to download the SURFboard Central mobile app

With the mobile app, you get:

- Step-by-step installation instructions
- Activation support for your specific service provider
- Automatic device registration for warranty
- Product documentation, Tech Support, and FAQs
- Software License and Warranty information



**Need help?** For product activation support, contact your Internet Service Provider directly.

**Using Web Interface:** After product activation, access your device by connecting an Ethernet cable between your desktop/laptop and your cable modem and then navigating to **192.168.100.1** in a Web browser.

**Username:** admin (case-sensitive)

**Password:** Last 8 digits of the Serial Number on your modem label