

G10 USER MANUAL

G10 MIXER



Live streaming • Podcast • Recording

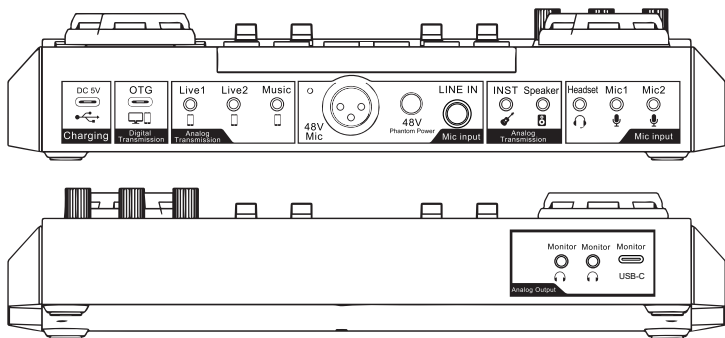
1. Product Overview

The G10 MIXER is a one-stop workstation that allows for the recording and mixing of sound sources without complicated settings. It provides all-in-one audio solution with audio-related operation and workflow needed, for Live streaming, Podcast creation, Event production, Voice over and other Content Creations.

G10 is a multi-functional portable digital audio console, with a comfortable slope control panel design, two independent DSP high-speed processors, and a 4.5-inch high-definition dot-matrix LCD colorful display screen to achieve a real dynamic music spectrum, rich tunes, pitch adjustment, and real-time storage, provide users with an immersive live visual and control experience; speaker port for speaker playback, adjustable music pitch, supplemented by dynamic microphone and musical instrument interfaces, BT wireless accompaniment, which provides convenience for outdoor live streaming; supports 48V microphone input, and five microphone interfaces is suitable for different microphone inputting; 16 live streaming atmosphere sound effects; 11 independent stepping knobs to adjust the sound resources; compatible with PC, smartphones, tablets and other devices as well as Windows, macOS, iOS, Android and other systems.

For Podcast creation, live streaming, event production, voice over or other content creations, G10 will mix your audio in real time, change your voice, control the volume of all your audio sources, customize and store your different voice modes, input external audio from your phone or PC. Makes your content creation easy, And engage your audience like never before.

2. Product Interfaces



DC 5V Charging: USB-C port; the mixer charging port, only used for charging. **NOTE:** When the mixer has low power or is about to run out of power, it will make a lot of noise; the power is continuing to decrease, the noise will become more and more loud. Please charge it as soon as possible.

OTG: USB-C port; digital transmission port; used for PC/smartphone live streaming port or recording port, or used for PC/smartphone inputting music resources port;

Live: 3.5mm TRRS port; By the port, the processed sound can be output to the smartphone, tablet or other devices through a 3.5mm TRRS cable. Can live stream to multiple devices at the same time. Mainly use to smartphone or tablet live streaming or recording. When you chat with followers, fans and other streamers, the voice of other party can be input through this port. However, the volume of other party depends on the output volume of the other party, our mixer cannot control the volume.

Music: 3.5mm music resources input port; Connect an external audio source or devices to the mixer via a 3.5mm audio cable, to play background music during live streaming or recording. Can be connected to the smartphone headphone jack, PC earphone jack.

48V Mic: 48V condenser microphone input port; 48V phantom power switch is to the right of this port, The 48V phantom power indicator is in the upper left corner of this port.

LINE IN: 6.35mm dynamic microphone input port.

INST: 3.5mm TRS input port. Connect 3.5mm musical instrument devices.

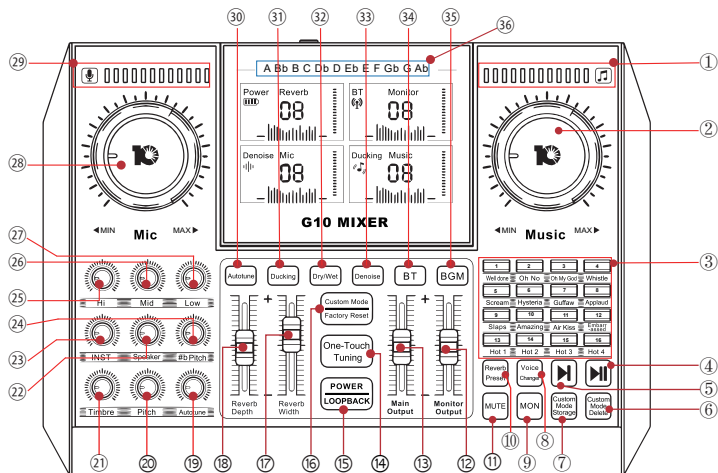
Speaker: 3.5mm TRS output port. Connect audio playback devices, such as speaker, headphone.

Headset: 3.5mm TRRS port. Connect a headphone with microphone function. used for vocals input via headset, and also can real-time monitor all sound sources simultaneously.

Mic(1, 2): 3.5mm TRS mic port. Connect a (XLR to 3.5mm) **condenser microphone** that does not require external power supply. 【48V microphone needs to be connected to external phantom power, then use XLR-3.5mm microphone cable to connect to the audio console】.

Monitor: Two 3.5mm monitoring port and one USB-C digital monitoring port. used for monitoring all sound resources of the mixer in real time.

3. Panel Functions Introduction



1. **Music volume dynamic response light**
2. **Music knob:**
Rotate the knob clockwise to adjust the input volume of music from BT, Music jack, USB-C jack.
3. **16 interesting instant trigger sound pads** for live streaming atmosphere creation.
4. **▶|| button:**
Short press to **play/pause** accompaniment music(**only for BT music accompaniment**)
5. **▶| button :**
Short press to switch to next music, **Long press** 2 seconds to switch to last music(**only for BT**).
6. **Custom Mode Delete button:**
Delete the saved custom mode.
7. **Custom Mode Storage button:**
Save customized sound mode, can be saved up to 19 custom modes.
8. **Voice Changer button:**
Cyclically switch interesting voice changer modes: male voice, female voice, baby voice, uncle voice; currently only 4 voice changing modes are set, maybe added in the future.
9. **MON button:**
Turn on/off the function of monitoring microphone audio(input from 48V Mic, LINE IN, Mic1~2, Headset).
10. **Reverb Preset button:**
Cyclically switch presetted reverb modes: original sound mode, KTV mode, Chatting mode, Streamer mode, MC mode; currently only 5 reverb modes are set, maybe added or changed in the future.
11. **MUTE button:**
Turn on/off mute microphone channels volume; when on, the mixer will not input any microphone audio.
12. **Monitor Output fader:**
Adjust the monitoring volume of Monitor ports and Headset port.
13. **Main Output fader:**
Adjust output volume of Live ports & USB-C OTG port(output to recording or live streaming devices).
14. **One-Touch Tuning button:**
Turn on/off the set microphone EQ parameter to beautify your voice, all sound modes can be applied.
15. **POWER/LOOPBACK button:**
Long press to power on/off; **short press** to turn on/off LOOPBACK function(**LOOPBACK function is only for using on PC, LOOPBACK ON:** the audio resources inside PC(music, video, game, web pages, ect audio) can be heard by audience or can be recorded; **LOOPBACK OFF:** only microphone audio can be heard by audience or can be recorded).
16. **Custom Mode/Factory Reset button:**
Short press to cyclically switch the saved custom modes, built-in 19 sound modes, can be deleted by the **Custom Mode Delete** button; **Long press** to reset the G10 mixer to its original settings.
17. **Reverb Width fader:**
Adjust the sense of space of reverb effect.
18. **Reverb Depth fader:**
Adjust the time length of reverb effect.
19. **Autotune Knob(only for 12 electronic music tunes):**
Rotate the knob clockwise to adjust the intensity of the current autotune tunes.
20. **Pitch Knob :**
Rotate the knob clockwise to adjust pitch level of the voice.
21. **Timbre Knob :**
Rotate the knob clockwise to adjust timbre level of the voice.

22. Speaker Knob :

Rotate the knob clockwise to adjust the output volume(output to speaker devices(via Speaker jack)).

23. INST Knob :

Rotate the knob clockwise to adjust the input volume of musical instruments devices (via INST jack)).

24. #b Pitch Knob :

Rotate the knob to raise or lower the pitch levels of current accompaniment music.

25. HI Knob :

Rotate the knob clockwise to adjust the treble effect of microphone vocals.

26. Mid Knob :

Rotate the knob clockwise to adjust the midrange effect of microphone vocals.

27. Low Knob :

Rotate the knob clockwise to adjust the bass effect of microphone vocals.

28. Mic Knob :

Rotate the knob clockwise to adjust the input volume of microphone(from mic ports, Headset port).

29. Microphone volume dynamic response light

30. Autotune button :

Short press to cyclically switch 12-step autotunes, including A, Bb, B, C, Db, D, Eb, E, F, Gb, G, Ab; adjust the tune intensity by the Autotune knob; **Long press** 2s to turn off autotune mode.

31. Ducking button :

Turn on/off auto ducking microphone audio input function. **When on**, automatically lower the volume of background music while streamer speaking, recover background music volume while streamer stop speaking. at the same time, the Ducking button light will blink, and Ducking icon on display screen is on; when off, the ducking button light is always on, the icon will be always on.

32. Dry/Wet button :

The default is Wet mode, in **Wet mode**(Wet sound in monitor headphone and record Wet sound), the processed sound (such as reverb, music, others will be recorded and exported to output devices. in **Dry mode** (Wet sound in monitor earphone but record Dry sound), only mic input audio will be recorded and exported to output devices. The button light will be on always in Wet mode, the button light will blink in Dry mode.

33. Denoise button :

short press to turn on Denoise function, and the Denoise button light will blink, the Denoise icon on display screen will always on. **then short press** to switch noise reduction levels; **long press** to turn off Denoise function, and, the Denoise button light is always on, the Denoise icon will be off.

34. BT button :

short press to turn on/off BT function. BT waiting for pairing, the BT button light and BT icon in display screen will blink; BT paired successfully, the BT button light and BT icon will be always on; BT turn off, the BT button light and the BT icon will turn off.

35. BGM button :

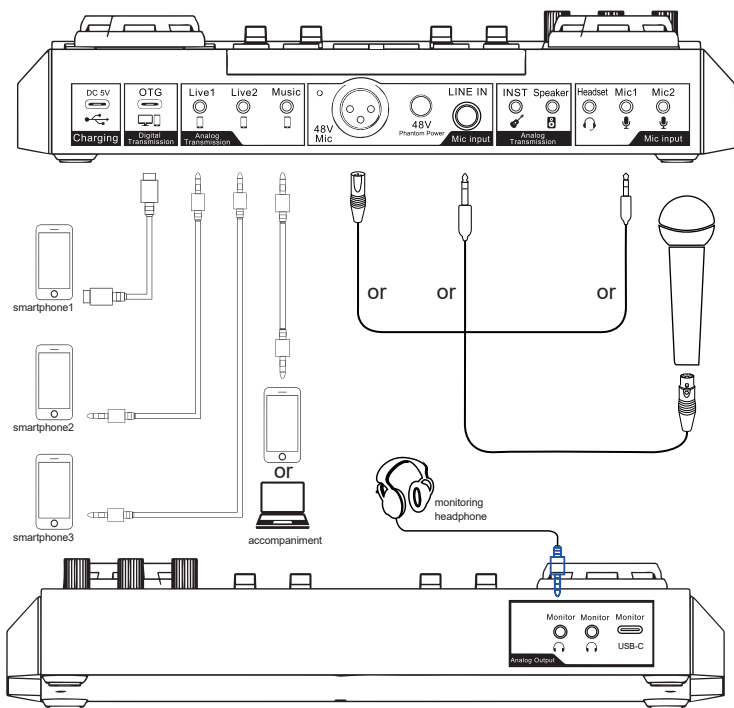
short press to turn on/off BGM function. when **BGM function on**, the mixer will remove 90% vocals of singer in current accompaniment music. the button light will blink when on, the button light will be always on when off.

36. 12-Step Autotunes indicator; when switch autotunes, the corresponding indicator is always on.

Voice Changer modes or **Reverb Preset** modes have a set reverberation effect. If you need to adjust the mode reverberation effect, you can turn the reverberation knob to the max on the right, and then to the min on the left. then, you turn off the reverberation effect, and then adjust the reverb effect according to your own needs.

4. Connection Guide

4.1 live streaming or recording on smartphone

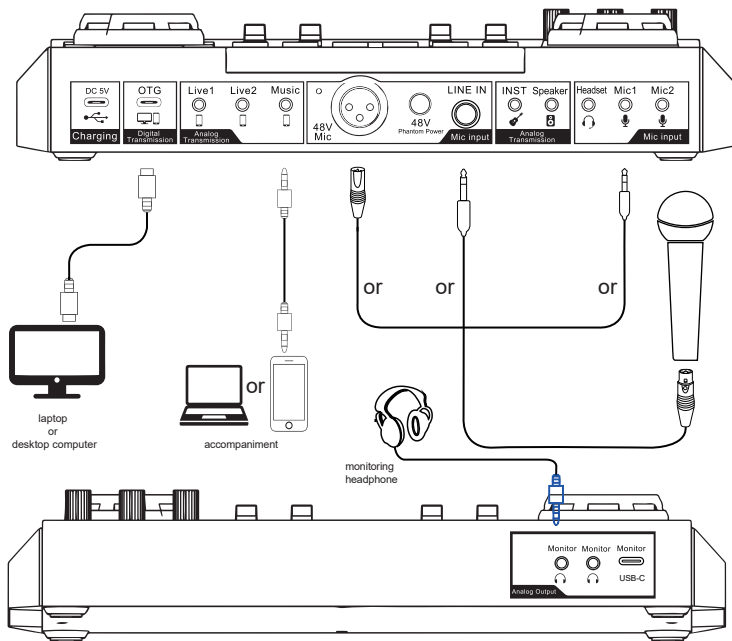


1. Connect the live streaming mobile phone, accompaniment mobile phone, monitoring earphone and microphone to the mixer as shown in the above.
2. Download the live streaming app on smartphone.
3. Power on the mixer and set the voice FX needed and functions, then test the live streaming effect.
4. Open the accompaniment music app on the accompaniment mobile phone and start live streaming.

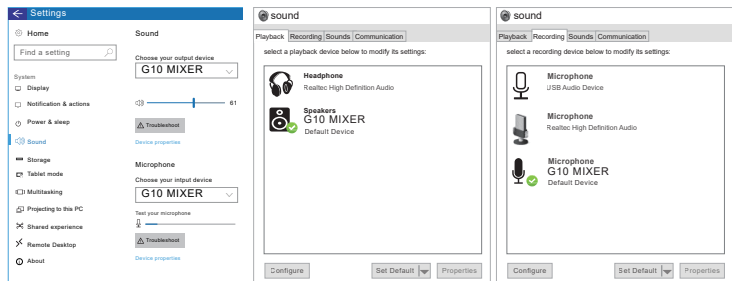
WARM TIPS:

1. Please use the USB-C or Lightning to 3.5mm audio adapter from the phone manufacturer. USB-C to Lightning cable maybe can not be applied to the live streaming on iPhone via OTG port.
2. The mixer support live streaming up to 3 different smartphones, 4 microphones & 1 headset inputs at the same time. Do not have to connect all output and input ports if not needed.
3. If has surroundings noise, please turn denoise function, or lower microphone volume.
4. It is not recommended to use while charging.

4.2 live streaming or recording on PC



1. Connect the accompaniment source, monitoring earphones, and mic to the mixer as shown in the above.
2. Connect the PC and the mixer by USB-C cable. The PC generally automatically recognize the mixer.
3. Enter the Sound settings panel of PC, and set the mixer "G10 MIXER" as the system default input or output device, or playback in "Playback" and "Recording" option, as shown in the down.
4. Set the input and output on live streaming platforms, accompaniment software as G10 MIXER .



WARM TIPS:

1. It is not recommended using the Live1~2 ports to connect computer for live streaming or recording.
2. Support live stream on computer and smartphone simultaneously.
3. Support 2 3.5mm headphone and USB-C headphone mono monitoring simultaneously.
4. Please turn on "LOOPBACK" function during PC live streaming if want inputting the PC internal system audio.

5. BT Connection

1. Turn on the BT function via BT button, and the BT button light starts to flash.
2. Search the device in smartphone BT menu, find the BT device of "G10 MIXER", and choose it to connect.
3. After the smartphone BT is connected successfully to the mixer, the BT button light is on always.
4. Please play accompaniment on phone music player, after set up the mixer.
5. Open the live streaming software on the smartphone or computer for live streaming.

WARM TIPS

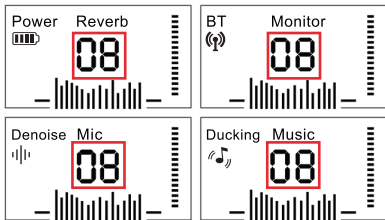
- BT connection is limited by distance(10meter), please do not place the too far away from the mixer.
- Be far away from strong signal interference place.
- BT feature is only for accompaniment music playback.



6. Custom Mode Settings

By setting the microphone EQ, reverb, reverb mode, voice changer mode, etc., you can customize the desired voice effect, and then use the "Custom Mode Storage" button to store the set voice mode. short press the "Custom Mode/Factory Reset" button to switch to the desired voice mode for live streaming or recording without setting voice parameters again.

_____ A Bb B C Db D Eb E F Gb G Ab _____



G10 MIXER



Switch the saved Custom Sound Mode

short press the Custom Mode button to cyclically switch the saved custom mode and the 4 number(red frame) on display screen will show the serial number of Custom Mode simultaneously.

Save the Custom Sound Mode

- First, you can delete the saved Custom Sound Mode by pressing the Custom Mode Delete button
- Then Set Hi, Mid, Low, Timbre, Pitch, Autotune, Reverb modes, Reverb, Voice Changers, ect sound EQ and sound effects.
- Then short press the Custom Mode Storage button to save the Custom Sound Mode and remember the serial number of the Custom Mode. A total of 19 modess can be saved. the 4 number(red frame) on display screen will show the serial number(from 01 to 19) of Custom Mode simultaneously

7. Noise Treatment

• Noise reduction function:

G10 mixer has built-in noise reduction button (Denoise button), if your room has much background noise, you can turn on the noise reduction function to filter background noise.

• Low input and high output:

Reduce the input volume of the microphone on the G10 audio console (to no noise), and then amplify the output volume (Main Output fader), similar to the compression effect.

• Adjust microphone sensitivity

If your microphone has **Sensitivity adjustment knob** on microphone, by the knob, you can lower the microphone pickup range and volume to reduce background noise.

• Microphone placement

The condenser microphones are sensitive to sound pickup, have a wide pickup range, and can pick up background noise that our ears can not hear. Therefore, it is recommended to use it in a quiet environment; You can place the microphone away from noise sources, such as fans, air conditioner vents, and the main host of a desktop computer, etc.

• Close to the microphone

The louder the ambient noise, the closer the microphone should be, to improve the signal-to-noise ratio of the recording and reduce the ambient noise recorded by the microphone.

• Do not use while charging

it is not recommended to use while charging, to avoid current sound.

• Filter noise on live streaming software

Add noise suppression and noise gate to the live streaming software, such as OBS Studio.

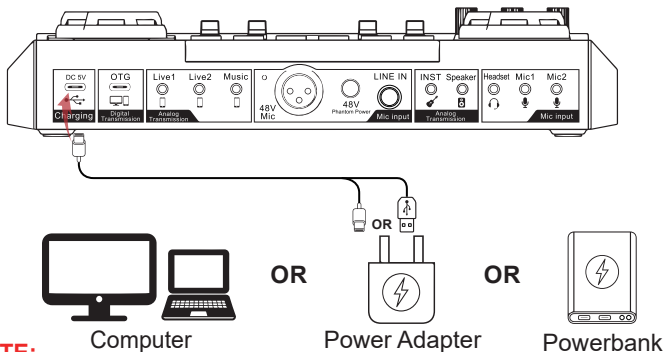
• Acoustic treatment

Some acoustic treatments can be done in the room, such as sound-absorbing foam, heavy curtains, thick carpets, sofas, bookcases, etc, can effectively reduce room reflection, reverb, echo, etc.

• Sound quality

G10 audio console is designed for live streaming, its sound quality is not as professional as a professional mixer.

8. Charging

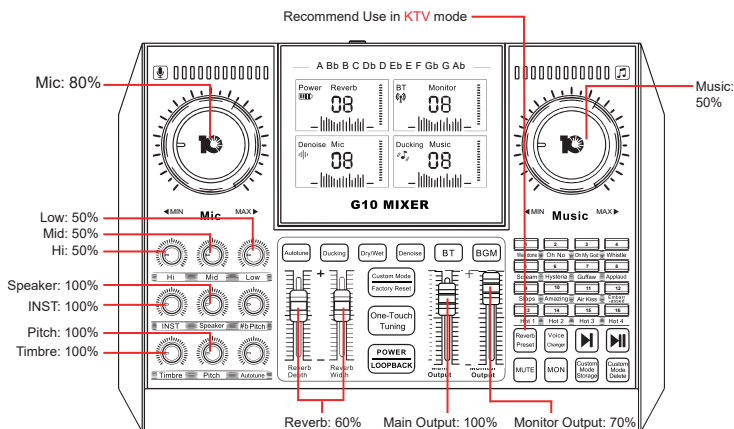


NOTE:

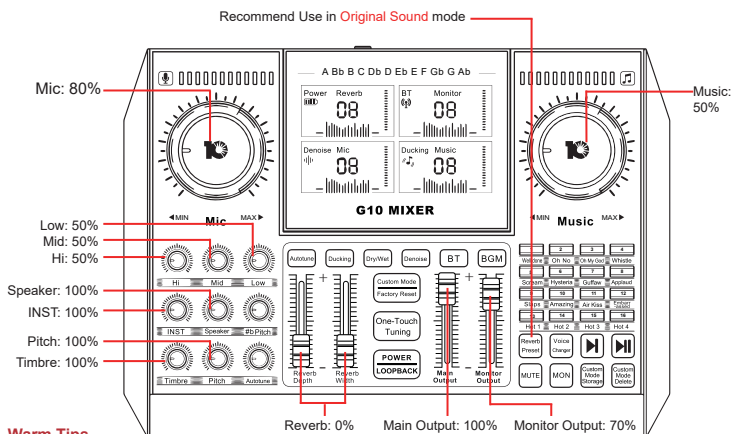
When the mixer has low power or is about to run out of power, it will make a lot of noise; the power is continuing to decrease, the noise will become more and more loud. Please charge it as soon as possible.

9. Tuning Settings Recommend

9.1 Karaoke Settings Recommend




9.2 Live Streaming Settings Recommend



Warm Tips

Everyone's voice is different, it is recommended to wear monitoring headphones to adjust microphone EQ, reverb, pitch, timbre, ect; the mixer has storing sound mode function, you store your settings of voice, and switch to the stored sound mode via Custom Mode button.

10. Technical Parameter

Basic Parameter			
Name		G10 MIXER	
Dimension		L272*W195*H60mm 820g	
Environment		Temperature 0℃ ~ 45℃/0 ℉ -113 ℉	
Battery		Lithium ion 5000mAh/3.7V (9.25Wh)	
Working Time		7-8 hours(XLR-3.5 condenser mic); 4-5 hours(48V condenser mic)	
Charging		DC+5V  , 1A MAX; 5 Hours Full Charge	
Out Power		10mW Load 32Ω (Condenser microphone)	
Frequency Response		50Hz~20KHz	
Reverb Processing		32Bit RISC Digital Processor, Up To 300MHz	
Sampling Rate		48000Hz/16Bit	
BT Version/Name		V5.0, Compatible with Bluetooth 4.2BR1 G3 SoundCard	
BT Receive		<12 m (No obstacle)	
S/N Ratio		>102dB	
THD		<0.3% @1kHz (Live streaming)	
Interfaces Parameter			
USB port	Type-C USB	Speaker port	3.5mm TRS port
Live port	3.5mm TRRS port	Headset port	3.5mm TRRS port
Music port	3.5mm TRRS & TRS port	Mic port	3.5mm TRS port
48V Mic port	XLR port	Monitor 3.5mm port	3.5mm TRS port
LINE IN port	6.35mm TRS & TS port	Monitor USB-C port	Type-C USB
INST port	3.5mm TRS port		

11. Troubleshooting(FQA)

1. Q: The device does not work, or there is no sound suddenly.

Answer: The battery is dead, please connect to USB cable to charge before use;

2. Q: There is a lot of noise during the live streaming.

Answer: a. Check whether the headset is inserted in place, and then plug in the headset again;

b. Whether the earphone is plugged into the corresponding identification position:

c. Appropriately reduce the microphone input volume, and turn on noise reduction function;

d. Check whether the battery is close to a dead state, please charge it in time;

e. If the PC is live streaming, and some laptops have interfering sound cards, try to unplug the computer's charging cable;

3. Q: The microphone has no sound.

Answer: a. Check the insertion position of the mic cable and make sure that the logo is face to you, or replacing the microphone cable to check if the microphone cable is faulty;

b. The microphone sound is turned off to the minimum, then please monitor and increase gradually the voice volume of mic;

4. Q: The live streaming sound is small or silent.

Answer: a. Check whether the live cable connection is plugged into the live streaming port;

b. Replace audio cable or USB cable to check if whether the cable is faulty;

c. Check whether the Main Outout fader is turned on to the maximum;

d. Check if your phone can record, then try live streaming again.

5. Question: The audience can't hear the music when live streaming, and it has no effect

Answer: a. Check whether the USB cable is plugged into the charging port, please use the configuration cable of this machine correctly;

b. Check whether the Dry/Wet button is turned on to the wet recording mode, dry recording mode is only output the microphone audio;

c. Check whether the "LOOPBACK" function is turned on when live streaming or recording on PC.

6. Q: The sound is not normal.

Answer: a. This device has a variety of pitch-shifting effects, please switch the sound mode to original sound mode;

b. The earphone is incorrectly inserted in the headset position, please unplug it and insert it to the earphone mark position.

7. Q: Can not be used with guitar

Answer: It should be connected to the 3.5mm "INST" jack, if 6.35mm plug, Please use a 6.35mm to 3.5mm adapter or insert into the LINE IN jack(but the input volume of guitar only can be adjusted by the Mic knob).

8. Q: Auto Ducking function not working

Answer: It doesn't work on a voice call, it works on podcast or live streaming with music.

12. Warm Tips

- Please do not charge the audio console during live streaming.
- Please charge the audio console before using for the first time.
- If not used for a long period, please charge the audio console every 3 months.
- Charging is also possible when the power is off.
- Do not charge for a long time.
- Please stop charging when the battery is fully charged to avoid over-charging.
- BT connection is limited by distance. Please do not place the too far away from the mixer to avoid interference.
- BT feature is only for accompaniment music playback.
- During using desk computer or laptop live streaming or accompaniment, you must turn on the "Loop-back" function, Only in this way can the viewers hear your voice and the sound from the PC.
- the mixer is a entertainment audio interface with mixer and sound card, designed for live streaming,

