



Quick Start Guide  
**ion4\_w**  
Access Point

## ANYWHERE EVERYWHERE



### Introduction

Thank you for choosing ion4\_w Wireless Access Point with 2x2:2 Multi-User MIMO and 802.11ac Wave 2 compliance.

### Packaging Content

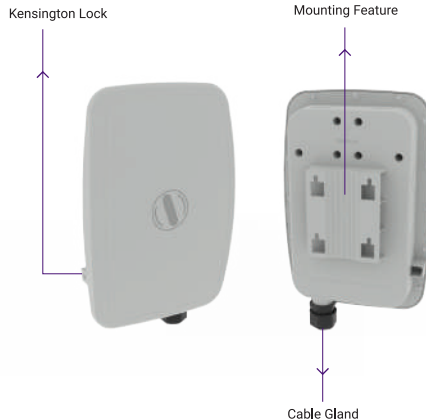
ion4\_w  
Access Point  
(Qty:1)

Quick Start Guide  
(Qty:1)

Hose Clamp  
(Qty:4)

ion4_w Specifications	
Peak Throughput(aggregate)	Upto 1.27 Gbps (867 Mbps for 5 GHz and 400Mbps for 2.4 GHz)
Wi-Fi Standard Support	802.11a/b/g/n/ac/ac Wave 2
Interface	1 X 10/100/1000BASE-T Ethernet
Radio Mode	2x2 MU-MIMO with 2 spatial streams
Mesh Support	Self-creating, Self-healing Mesh
Maximum number of SSID (per radio)	4 SSID per radio and 8 combined
Maximum User Support	128 on 5 GHz and 64 on 2.4 GHz
Power Supply	IEEE 802.3af PoE
Power Consumption (Max)	11.5 W (approx.)
Max Transmit Power	25 dBm for 2.4 GHz, 25 dBm for 5 GHz (will depend on country-specific guidelines)
Antenna Type	Integrated Omnidirectional Antennas
Antenna Gain	9 dBi for 5 GHz, 6 dBi for 2.4 GHz
Management	Standalone (via GUI) or through on-premise based solution or cloud-based
Enclosure Dimensions	290 x 200 x 90 mm or 11.4 x 7.87x 3.54 inches
Weight	0.75 kg
Operating Temperature	0°C to 55° C
Certifications	FCC Class B, CE, RoHS 3.0, Passpoint 3.0, WPA3, IP67

### Product Overview



### Mounting of ion4\_w Access Point

The ion4\_w can be mounted on a pole. Perform the following steps for appropriate installation.

#### Pole Mount

To mount ion4\_w Access Point on a pole, use the hose clamp provided

1. Open the hose clamp by turning the screws counter clockwise. Straighten out the end of the hose clamp.



2. These hose clamps are slid through the back of ion4\_w Access Point as shown below

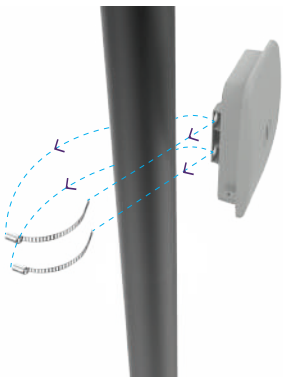


3. Wrap the hose clamp around the pole. Tighten the strap by turning the screws clockwise



### Unmounting of ion4\_w Access Point

Unscrew the hose clamps, straighten them and slide it out through the back of the ion4\_w Access Point

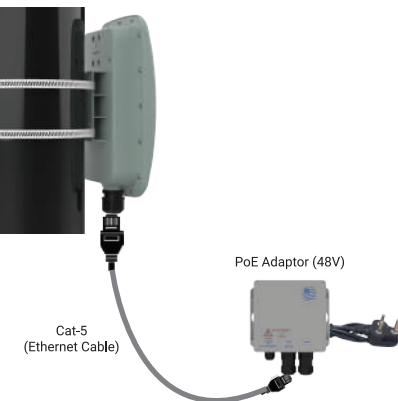


WARNING: HFCL is not held liable for any damages incurred during the process.

### Getting the ion4\_w Online

#### Step 1: Power up

The Access Point can be powered up using PoE adaptor (48V) as shown below:



Note: Plug and Adaptor will vary by country/ region

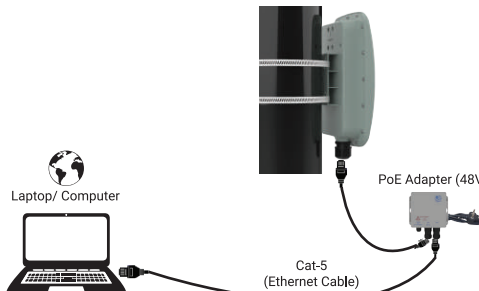
Power up using PoE Adaptor

### Step 2: Connect to the network

#### Section 1: Standalone AP

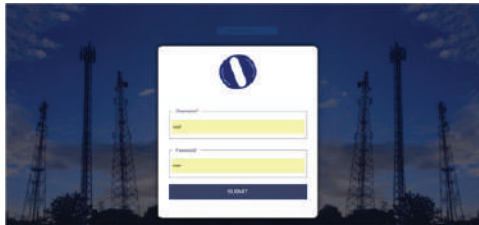
Follow the steps mentioned below and connect the Access Point to a network :

1. Connect an ethernet cable to the computer.
2. Connect the other end of ethernet cable to the data port on PoE adapter
3. Connect ion4\_w PoE supported ethernet port to PoE adapter power port. Device will be powered on



4. Configure the computer with a same domain static IP 192.168.1.X and a subnet mask of 255.255.255.0 (X is from 2 to 255)

5. Open the web browser and enter the Access Point static IP address in the address bar: 192.168.1.1
6. A login screen will appear.
7. Enter the default login credential details: User- root, Password- hfcl@ion



#### Section 2: Controller Managed AP

Follow the steps mentioned to connect Access Point to a network :

1. Connect an Ethernet cable to the computer.
2. Power-up the AP through PoE adapter or PoE switch
3. Connect the AP to DHCP network and Internet
4. Login to HFCL IO cloud controller (cNMS) [iocloud.hfcl.com](http://iocloud.hfcl.com) with credentials provided.  
  
4a. To get cNMS login credential, please send request email to [iosupport@hfcl.com](mailto:iosupport@hfcl.com) with below details

Customer Name	Customer email address	Customer address	Customer contact number	Distributor/ Retailer Name	No.of AP Purchased	Country

5. Add AP group under configuration
6. Add APs in the AP group
7. Create SSID in the AP group
8. Refer our website [io.hfcl.com](http://io.hfcl.com) for detailed information to configure AP through cNMS

### Safety Precautions

Observe the following safety precautions to avoid damage to the ion4\_w Access Point:

! Do not power the device during installation

! Keep away from high voltage cables

! Do not power off the unit in the middle of an upgrade process

! The gland should be ground facing all the time

! Do not open the enclosure

! Fasten the device tightly

Part Number: QSG-01-0006  
Revision: A



**Contact Us:**  
Email: [iosupport@hfcl.com](mailto:iosupport@hfcl.com)  
Website: [www.hfcl.com](http://www.hfcl.com)  
[www.io.hfcl.com](http://www.io.hfcl.com)  
8, Commercial Complex, Masjid Moth,  
Greater Kailash-II, New Delhi- 110048