

A192-BF Series
Wall Mounted Drinking Fountain with
Bottle Filler and Trim Panel



A192400F-BF / A192400S-BF

TECHNICAL ASSISTANCE TOLL FREE TELEPHONE NUMBER:
1.800.743.8259

Technical Assistance E-Mail: Fieldservice@acorneng.com

NOTES TO INSTALLER:

1. Please leave this documentation with the owner of the fixture when finished.
2. Please read this entire booklet before beginning the installation.
3. Check your installation for compliance with plumbing, electrical and other applicable codes.

For current Warranty click hyperlink [Product Warranty](#) or visit: www.murdockmfg.com/terms-and-warranty

Murdock assumes no responsibility for use of void or suspended data. © Copyright Murdock, City of Industry, CA Member of Morris Group International. Please visit www.murdockmfg.com for most current specifications.

**COMPLIES WITH
STANDARDS**



NSF/ANSI/CAN 61

Federal
Public Law
111-380
(No Lead)



C

murdock[®]
SINCE 1853

15125 Proctor Ave, City of Industry,
CA, 91746 U.S.A.
Phone 800-591-9360

Member of

MORRIS GROUP
INTERNATIONAL

www.murdockmfg.com

IMPORTANT

Some options may slightly alter installation. To ensure proper installation review the manual thoroughly and verify rough-ins before beginning any work. File this manual with the owner or maintenance personnel upon completion of installation.

MGI Engineered Plumbing Products are designed in accord with applicable National Codes and Standards, which may include UPC, ANSI, and ASSE. Installers should use industry standard practice for details not covered within Manual. Prior to installation, supply lines must be flushed of all foreign material such as pipe dope, chips, or solder. Debris or foreign material in water supply may damage valve. An appropriate thread sealant is recommended on all threaded waste and supply connections to reduce the possibility of leaks.

When applicable: Industry standard wall backing, for wall hung fixtures, is required. Installer provided wall anchors and wall anchoring hardware must be appropriate for wall construction and have a minimum pull-out rating of 1000 lbs. (453.6 kg).

When applicable: ANSI, UFAS or ADA compliance is subject to the interpretation and requirements of the local code authority and is the responsibility of the installer for verification.

When applicable: Electrical receptacle(s) must be wired to a GFCI protected circuit. Fixture must be earth grounded per N.E.C. (National Electrical Code).

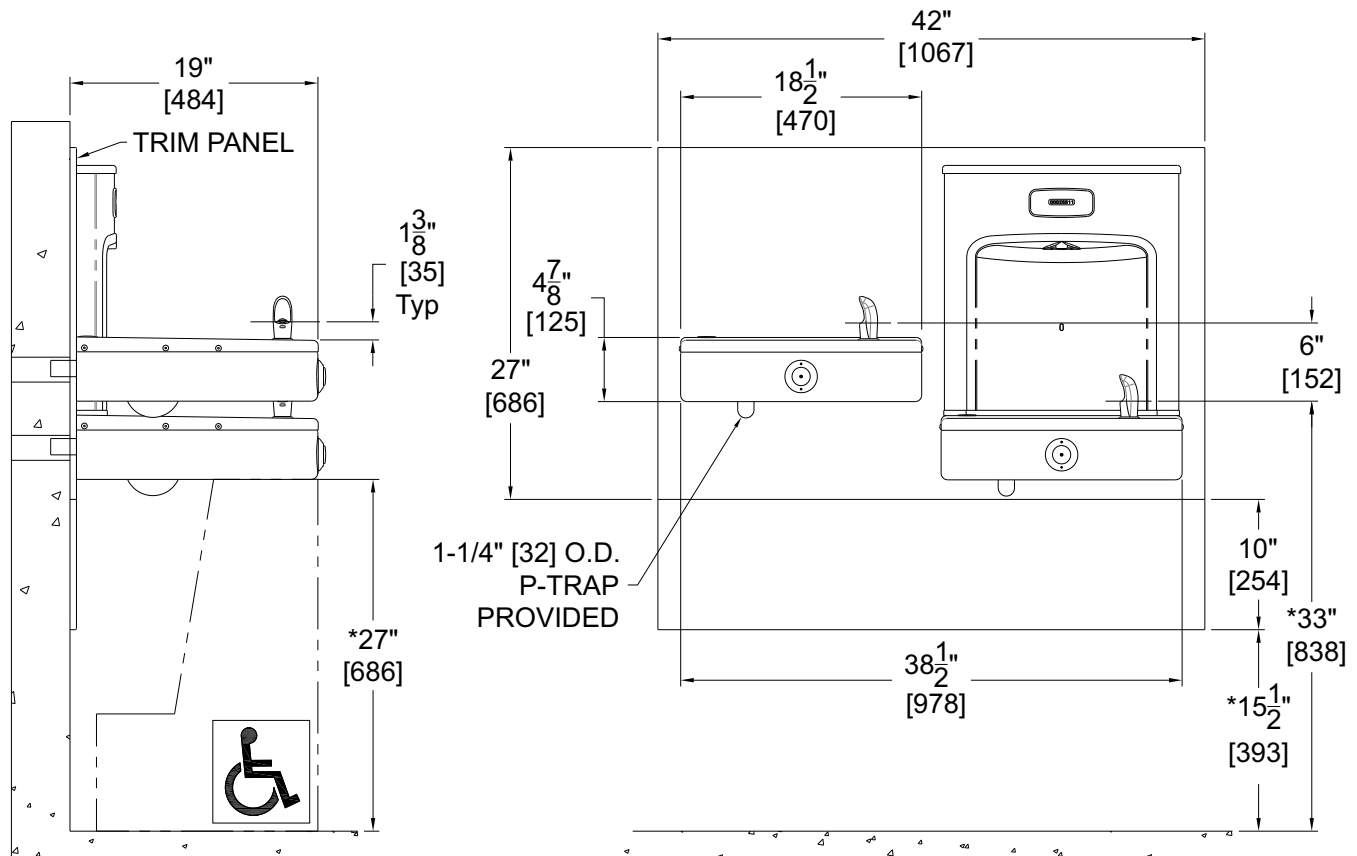
ROUGHING-IN AND DIMENSIONAL DRAWING

Prior to roughing in, consult with local, state, and federal codes for proper mounting height.

A192-BF Wall Mounted Drinking Fountain and Bottle Filler

Notes:

1-Standard Bi-Level rough-ins shown. For -RBL Reverse Bi-Level, Mounting Frame rough-ins opposite



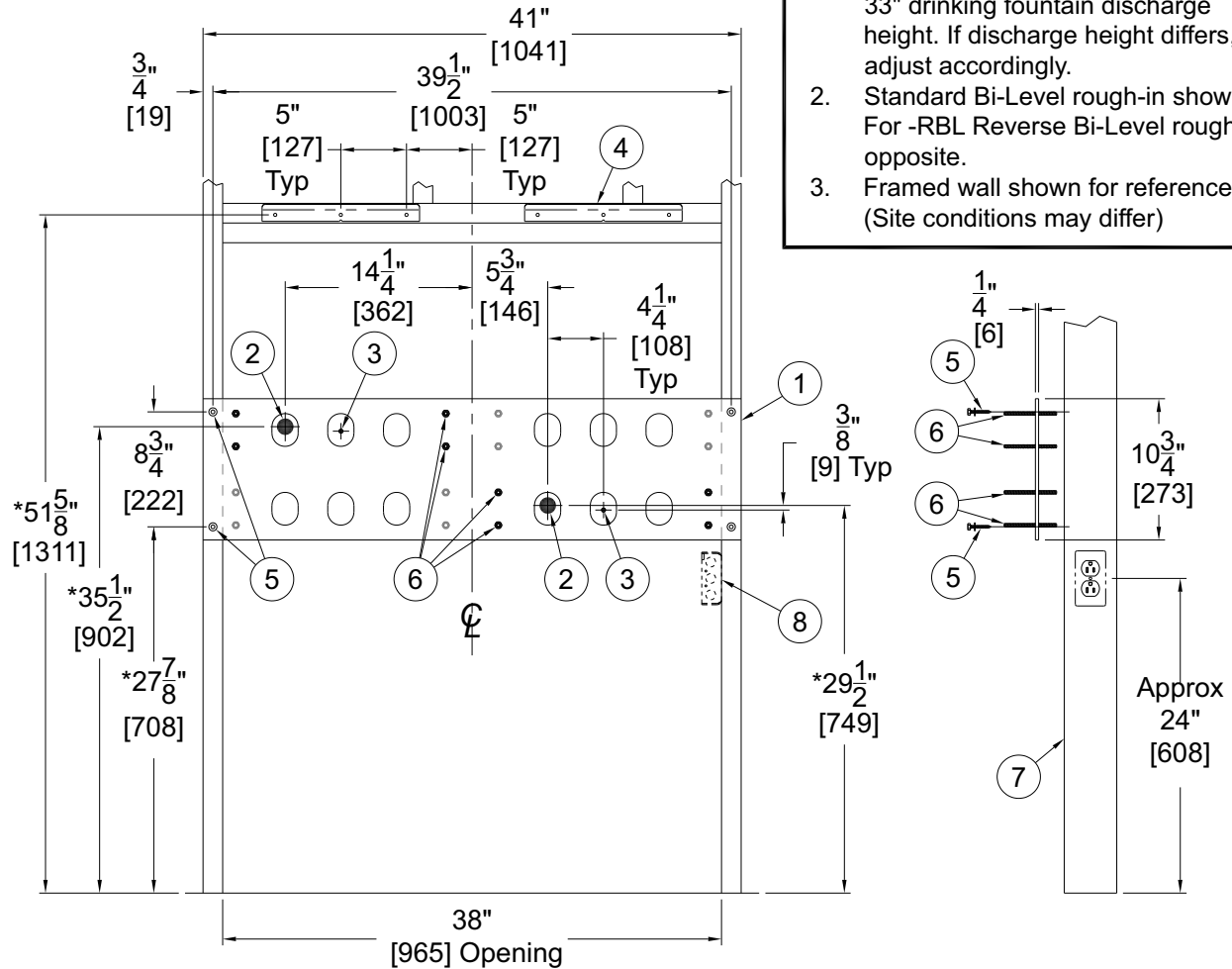
GENERAL NOTES:

1. ALL DIMENSIONS ARE IN INCHES [MM]
- *2. DIMENSIONS SHOWN ARE FOR RECOMMENDED ADULT HEIGHT. ADJUST VERTICAL DIMENSIONS AS NECESSARY TO COMPLY WITH FEDERAL, STATE, & LOCAL CODES

NOTES:

1. Dimensions shown for ADA compliant installation. For Child ADA 2010 compliant parallel approach installation, decrease height of * dimensions by 2-3/4".
2. Provide clear floor space as required. Adjust vertical dimensions as required to comply with federal, state, and local codes.

A192-BF Rough-In and Mounting Plate Detail



General Notes:

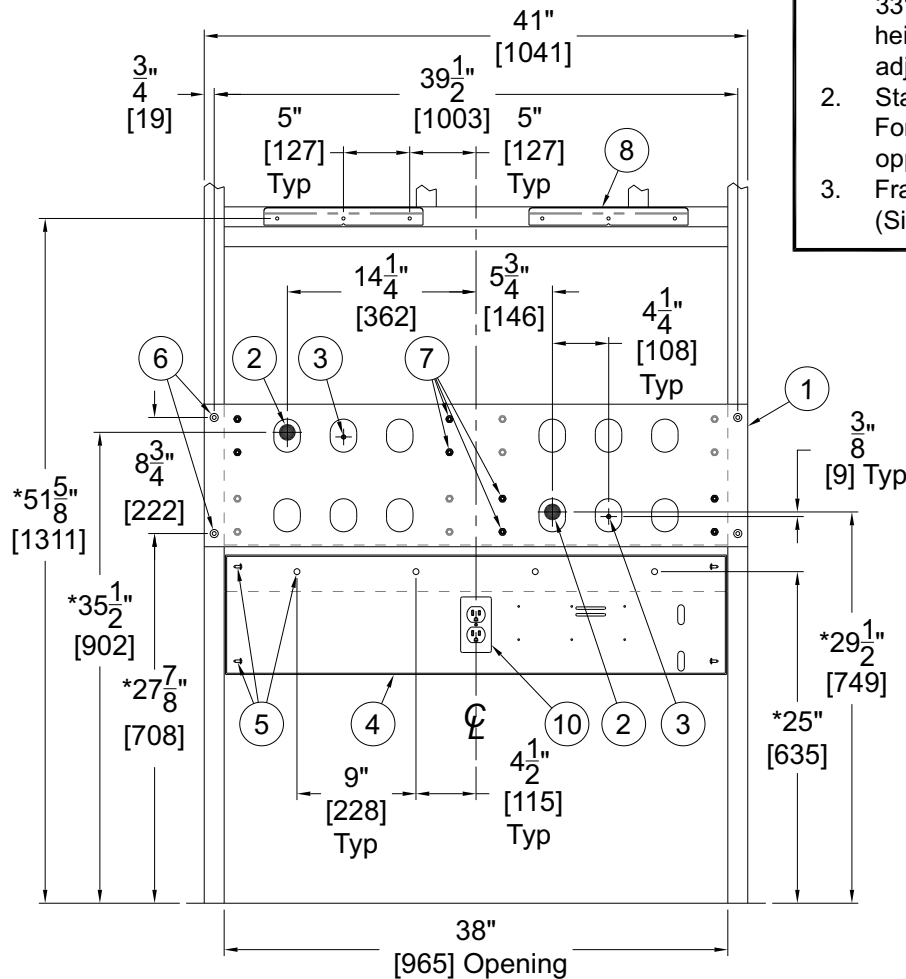
1. Dimension indicated with (*) is for 33" drinking fountain discharge height. If discharge height differs, adjust accordingly.
2. Standard Bi-Level rough-in shown. For -RBL Reverse Bi-Level rough-in opposite.
3. Framed wall shown for reference. (Site conditions may differ)

- | | |
|--|--|
| ① Supplied Wall Mounting Plate | ⑥ 5/16-18 UNC Studs and Hardware (Provided) |
| ② 1-1/4" OD Waste Outlet | ⑦ Support Framing by Installer |
| ③ 3/8" NCT Supply Inlet | ⑧ BF12 Models Only: 110VAC, 50-60Hz, Electrical Receptacle (by others) for 9 VDC, 0.8A Plug-In Power Supply (Provided) |
| ④ "S" Clip Mounting Bracket (Provided) | |
| ⑤ 1/4" Screw and Washers by Installer | |

NOTES:

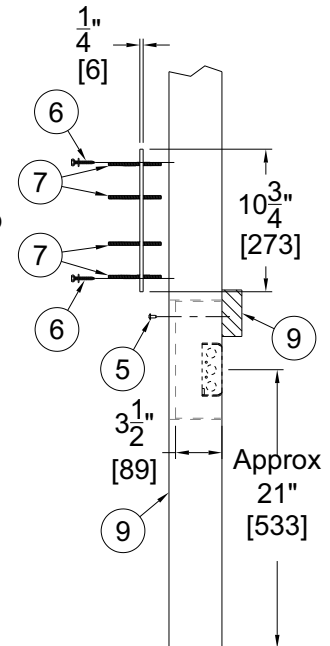
1. Dimensions shown for ADA compliant installation. For Child ADA 2010 compliant parallel approach installation, decrease height of * dimensions by 2-3/4".
2. Provide clear floor space as required. Adjust vertical dimensions as required to comply with federal, state, and local codes.

A192-BF-WF Rough-In and Mounting Plate Detail



General Notes:

1. Dimension indicated with (*) is for 33" drinking fountain discharge height. If discharge height differs, adjust accordingly.
2. Standard Bi-Level rough-in shown. For -RBL Reverse Bi-Level rough-in opposite.
3. Framed wall shown for reference. (Site conditions may differ)



- | | |
|---------------------------------------|--|
| ① Supplied Wall Mounting Plate | ⑦ 5/16-18 UNC Studs and Hardware (Provided) |
| ② 1-1/4" OD Waste Outlet | ⑧ "S" Clip Mounting Bracket (Provided) |
| ③ 3/8" NCT Supply Inlet | ⑨ Support Framing by Installer |
| ④ Water Filter Enclosure | ⑩ BF12 Models Only: 110VAC, 50-60Hz, Electrical Receptacle (by others) for 9 VDC, 0.8A Plug-In Power Supply (Provided) |
| ⑤ #12 Screws by Installer | |
| ⑥ 1/4" Screw and Washers by Installer | |

NOTES:

1. Dimensions shown for ADA compliant installation. For Child ADA 2010 compliant parallel approach installation, decrease height of * dimensions by 2-3/4".
2. Provide clear floor space as required. Adjust vertical dimensions as required to comply with federal, state, and local codes.

IMPORTANT:

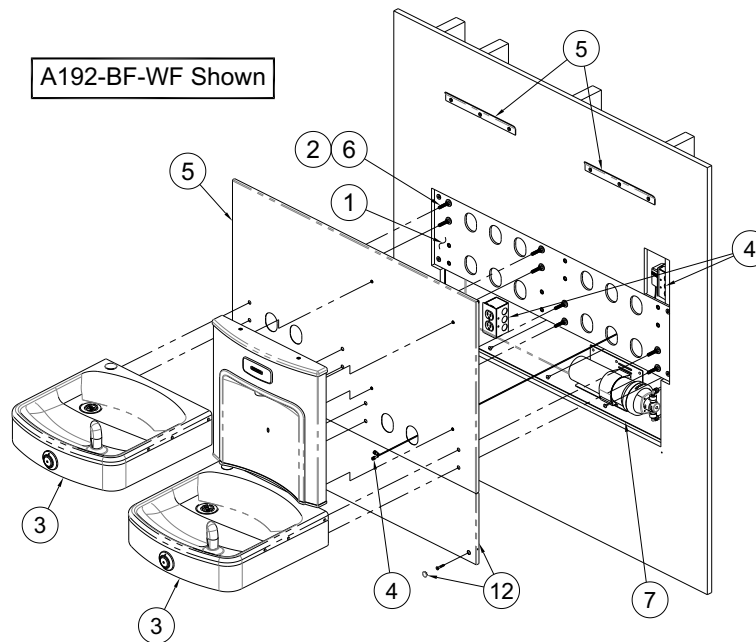
1. Water Supply Service Stop Valve and Water Connections to be supplied by others in accordance with local codes.
2. Waste is 1-1/4" Outer Diameter. Drinking Fountain water inlet is 3/8" Outer Diameter copper tube. Bottle Filler water inlet is 3/8" Outer Diameter copper tube. Water line by others.
3. Completely flush supply lines of all foreign debris before connecting to fixture. Optional Water Filter (WF), is available should any problems with taste, odor, color, or sediment arise from the water supply.
4. All burrs must be removed from outside of cut tubes before inserting into strainer or other components.
5. *Per UPC 609.10-All building water supply systems in which quick acting valves are installed shall be provided with devices to absorb the hammer caused by high pressure resulting from the quick closing of the valve. These pressure-absorbing devices shall be approved mechanical devices. Water pressure-absorbing devices shall be installed as close as possible to the quick closing valve.*

PRIOR TO INSTALLATION:

1. Read all installation instructions carefully, before proceeding.
2. Carefully remove all fixture components from packaging, preventing scratching or damage. Inspect fixture and all parts from damages and all parts that are bolted on.
3. Provide mounting surface, adequate to support the fixture and loads on the fixture.
4. Provide rough-ins as shown on the roughing-in and dimensional drawing, including water supply and drain pipe.
5. Completely flush water supply lines of all foreign debris, before connecting to the fixture.

DRINKING FOUNTAIN INSTALLATION:

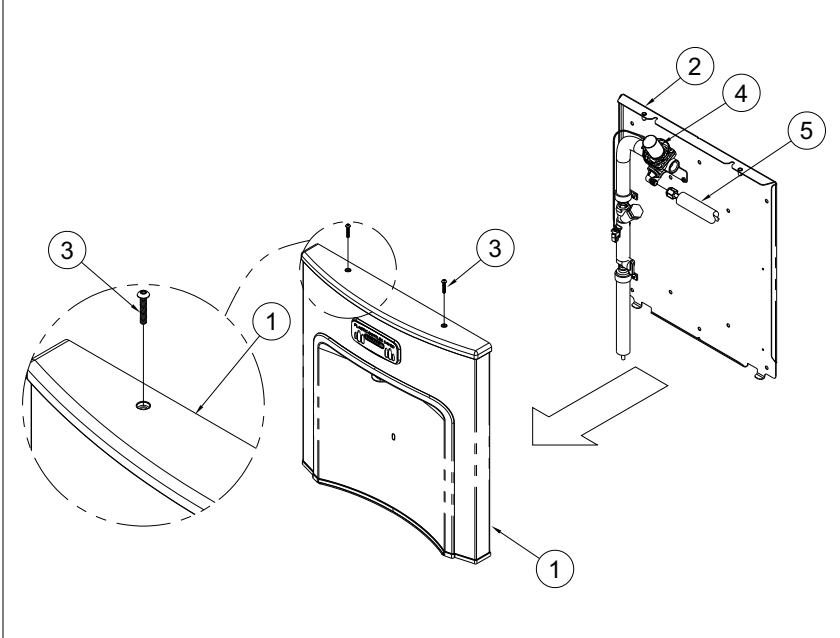
- ① Insert mounting frame into the rough-in block out and secure using 1/4"-20 UNC mounting hardware (provided by others).
- ② Install the four threaded studs into the Wall Mounting Frame.
- ③ Remove the drinking fountain top by taking out the drain screw and lifting at the front while pulling forward. Disconnect bubbler tube. Set top aside in a safe place where it will not be damaged. Place the screw in a secure location where it will not be lost.
- ④ Plug Power Supply into Electrical Receptacle (by others).
- ⑤ Hang Upper Trim Panel on Mounting Clips.
- ⑥ Slide Fixture over studs and secure with nuts and washers.
- ⑦ For -WF option: Insert Filter Enclosure using #12 wood screws (by others).
8. Assemble P-Trap to drain adapter and then assemble to unit with Phillips head screws.
9. Make-up 1-1/4" outer diameter waste connection.
10. After thoroughly flushing the 3/8" outer diameter supply line, connect water supply to Angle Stop (by others).
11. Place drain gasket on drain adapter. Reconnect bubbler tube. Reassemble top to unit by engaging back clip and securing with screw.
- ⑫ For -WF option: Place Lower Trim Panel onto Upper Trim Panel and secure to wall with #12 wood screws or as required for site conditions (by others) and snap in Round Plug into bottom holes.

**DRINKING FOUNTAIN START UP:**

1. Thoroughly flush the supply line, turn on building water supply and check all connections for leaks.
2. Air within the drinking fountain system or the structure supply piping will cause an irregular bubbler outlet stream until purged out by incoming water. Covering the bubbler with a clean cup (or similar object) is recommended when first activating drinking fountain to prevent excessive splashing. Depress front pushbutton until steady water stream is achieved.
3. If water flow requires adjustment, insert a slotted narrow blade screwdriver in the hole centered on the underside of the fixture in the knee clearance area up to the flow regulator. Turning clockwise will increase flow and turning counterclockwise will decrease flow.
4. Recheck all water connections with water flowing through system. **THOROUGHLY CHECK FIXTURE FOR WATER LEAKS.**

BF11/BF12 INSTALLATION INSTRUCTIONS

- 1** Unfasten screws that hold the Bottle Filler Housing to the Mounting Channel. Disconnect insulated $\frac{1}{4}$ " riser tubing from Solenoid Valve to separate. Place Bottle Filler Housing and screws in a secure location.



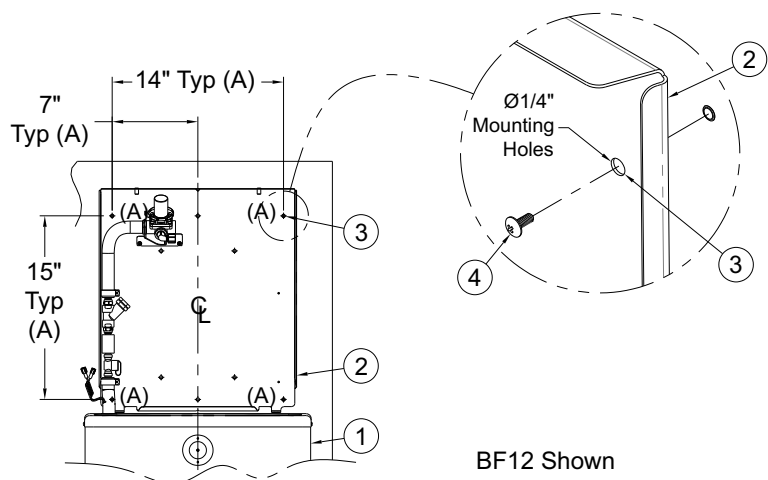
- ① Bottle Filler Housing
- ② Mounting Channel
- ③ #10-32 x 1" Button Head Screw
- ④ Solenoid Valve
- ⑤ 1/4" OD Insulated Tubing

- 2** Center BF Mounting Channel over Fountain deck and anchor to upper trim panel, securing with wall anchors and anchoring hardware provided.

- ① Drinking Fountain deck and cabinet
- ② Mounting Channel
- ③ 4x Mounting Holes (A)
- ④ Anchoring Hardware provided

*NOTE: Thread 1/4" OD insulated inlet tubing through Grommet and into cabinet prior to securing to wall.

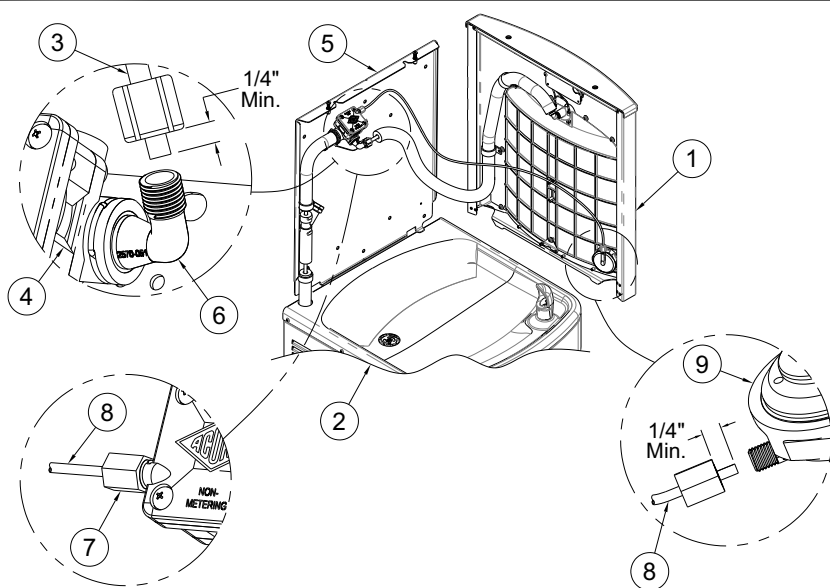
*NOTE: Insulation Tubing may overlap Fittings. Illustrations may show exposed 1/4" OD Tubing for clarity only.



BF11/BF12 INSTALLATION INSTRUCTIONS (Continued)

BF11 SERIES

3A With Mounting Panel secured, place Bottle Filler Housing on top of the Water Cooler and connect water supply line from Bottle Filler to Pneumatic Valve Outlet. Connect 1/8" Air-Line to Pushbutton and Pneumatic Valve Inlet.

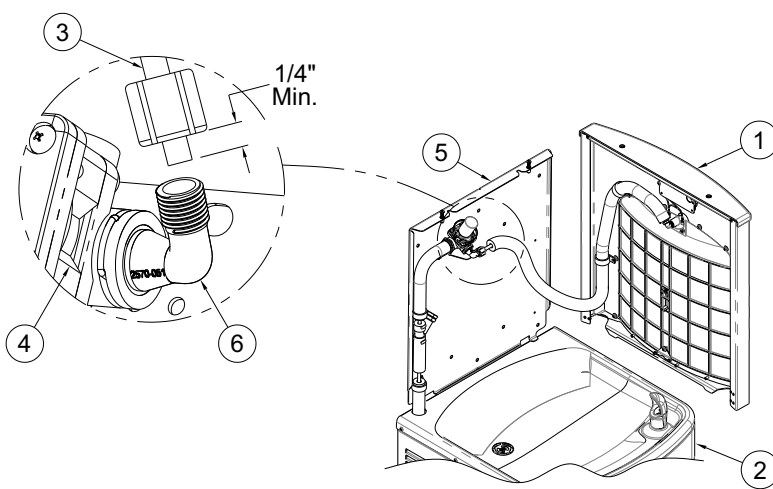


- ① Bottle Filler Housing
- ② Water Cooler Assembly
- ③ 1/4" O.D. Polyethylene Supply Line
- ④ Pneumatic Valve
- ⑤ Mounting Panel
- ⑥ Valve Water Supply Outlet Elbow
- ⑦ Valve Air-Line Supply Inlet
- ⑧ 1/8" O.D. Polyethylene Supply Line
- ⑨ Pushbutton

! IMPORTANT
FOR BF11 SERIES, FOLLOW STEP 3A
FOR BF12 SERIES, FOLLOW STEP 3B

BF12 SERIES

3B With Mounting Panel secured, place Bottle Filler Housing on top of the Water Cooler and connect water supply line from Bottle Filler to Solenoid Valve Outlet.

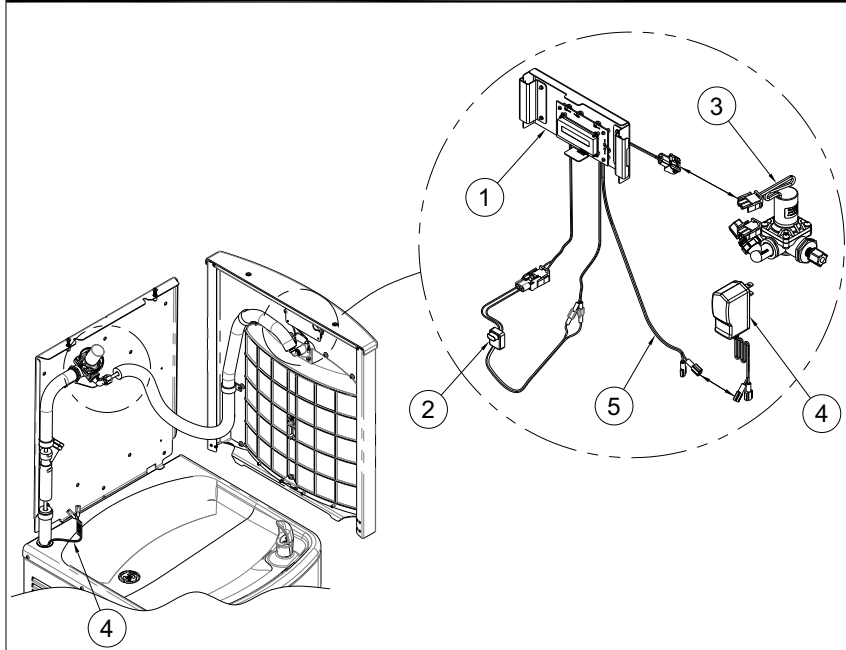


- ① Bottle Filler Housing
- ② Water Cooler Assembly
- ③ 1/4" O.D. Polyethylene Supply Line
- ④ Solenoid Valve
- ⑤ Mounting Panel
- ⑥ Valve Water Supply Outlet Elbow

BF11/BF12 INSTALLATION INSTRUCTIONS (Continued)

BF12-BCD SERIES

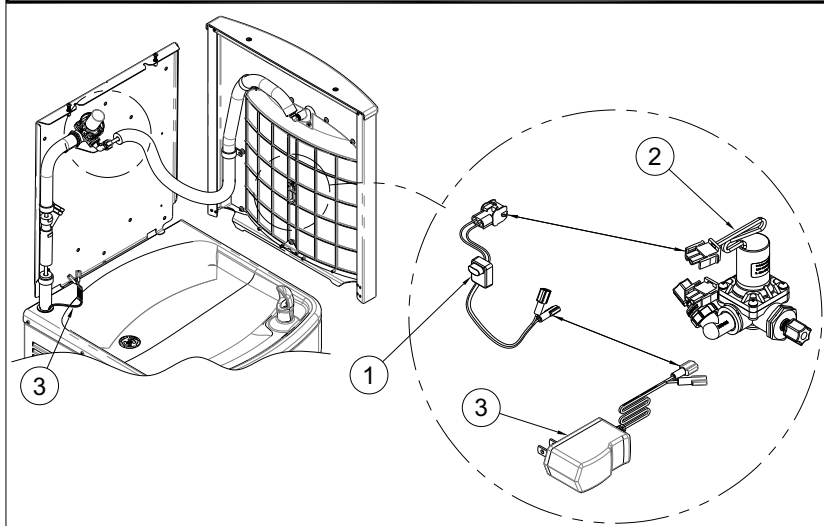
4A Connect Electrical wiring as shown in diagram. If unit does not have -BCD Bottle Count Display, skip to step 4B.



- ① -BCD Bottle Count Display
- ② Sensor
- ③ Solenoid Valve
- ④ Power Supply
- ⑤ Black Wire - BCD

BF12 SERIES

4B Connect Electrical wiring as shown in diagram. If unit has -BCD Bottle Count Display, see step 4A before continuing.



- ① Sensor
- ② Solenoid Valve
- ③ Power Supply

TROUBLE SHOOTING:

1. ADJUSTMENTS:

- a. Cartridge – The water flow can be adjusted using a slotted narrow blade screwdriver and turning clockwise to increase flow and counterclockwise to decrease flow.
- c. Bubbler Stream - Bubbler can be rotated slightly to direct the stream backwards or forwards. Adjust the stream to minimize splashing. Splashing may occur from bubbler stream if the unit is not level. Shim lower mounting point, if necessary, to level chiller.

2. RESTRICTED OR NO WATER FLOW:

- a. Ensure water supply service stop valve is fully open.
- b. Verify minimum 20 psig supply line flow pressure.
- c. Check for twists or kinks in outlet tubing.
- d. Check the water inlet “Y” strainer. Sediment from the main supply can get trapped in the screen along with installation materials such as pipe dope and flux. The screen should be cleaned and checked on a regular basis and replace if needed.
- e. The cartridge valve located in the water control assembly or bubbler can also become clogged with foreign material. The cartridge valve can only be replaced and not repaired.
- f. Check flow adjustment. See start up note #3.
- g. Flow control in solenoid valve outlet elbow clogged remove & clean.
- h. No power to transformer connections, loose or wires cut.

3. WATER DRIPS OR WILL NOT SHUT OFF:

- a. Open fixture. Loosen nuts holding valve bracket assembly to bottom of fixture but, do not remove. Move complete valve bracket assembly further back from the front push pad and tighten to lock in place.
- b. Replace valve cartridge.

CLEANING & MAINTENANCE GUIDE:

1. Periodically remove fountain top and clean out in-line strainer.
2. Periodically remove panel of bottle filler and clean out inline “Y” strainer.

For Stainless steel units:

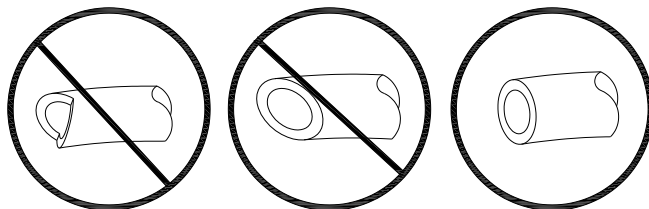
1. To Remove water spots or rust spots, stainless steel cleaner/polish on a cloth is recommended.
2. If there are stubborn spots or if you wish to treat a scratch, using synthetic abrasive general purpose pads, such as Scotch-Brite™, are recommended.
3. Apply stainless steel cleaner/ polish to the synthetic abrasive pads and carefully rub the panel with the grain.
4. DO NOT use harsh chemicals, abrasive or petroleum based cleaners. Use of these will void the Murdock warranty.
5. Stainless steel should be kept clean at all times. If a coating of stainless steel cleaner/ polish is maintained, stainless steel surfaces will retain their new, clean, polished appearance indefinitely.

PUSH-IN FITTING INSTALLATION

NOTE: FITTINGS AND TUBE SHOULD BE KEPT CLEAN, BAGGED AND UNDAMAGED PRIOR TO INSTALLATION.

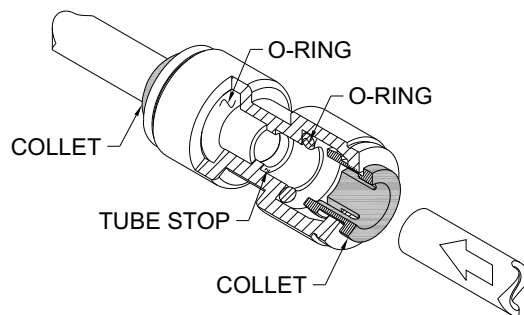
TO CUT TUBE:

Cut to fit length of 1/4" PE tubing and remove any burrs or sharp edges. Ensure that the outside diameter is free from score marks. Tube ends should be square.

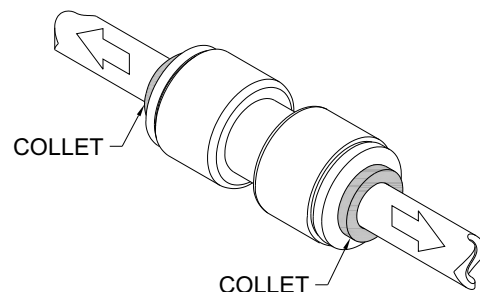


INSERTING THE TUBE:

1. Firmly and fully insert the tubing end into the push-in fitting up to the tube stop located approximately 1/2" deep.

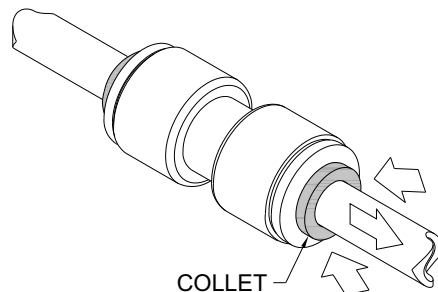


2. Pull on the fitted tubing to ensure it is secure. Tube should not come free from the fitting. Water test the connection assembly prior to leaving the site to ensure there are no leaks.



DISCONNECTING THE TUBE:

To disconnect the tube from the fitting ensure that the water line is depressurized. Push collet square towards the push-in fitting body and hold. While holding the collet in, pull on the PE tubing to remove from the push-in fitting.



CARTRIDGE REPLACEMENT/ STRAINER MAINTENANCE

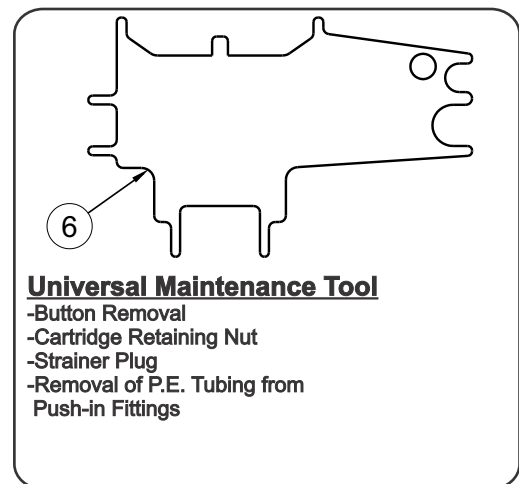
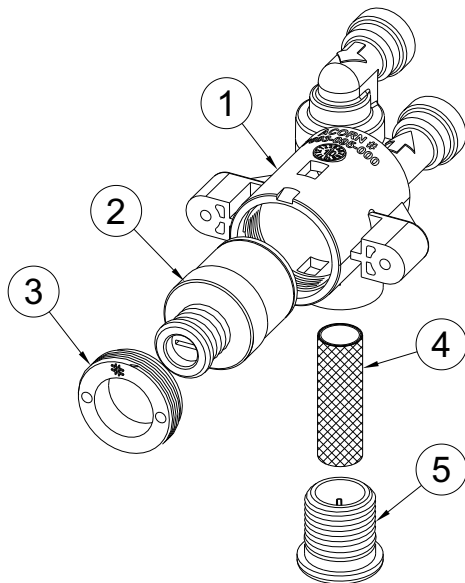
Note: Use the Universal Maintenance Tool to perform the following:

1. Strainer Plug must be removed before Cartridge replacement and Strainer maintenance (no need to turn the water off at the Angle Stop). Some residual water will drain during Plug removal.
2. Clean Strainer as needed using clean water.
3. Cartridge Replacement - insert diamond end of the Universal Tool into Pushbutton, rotate 90 degrees and pull firmly to remove the Button. Remove Cartridge Retaining Nut . Remove and replace Cartridge. When replacing Cartridge, be sure to align the inlet and outlet Ports on the Cartridge with the Ports in the Valve Body.

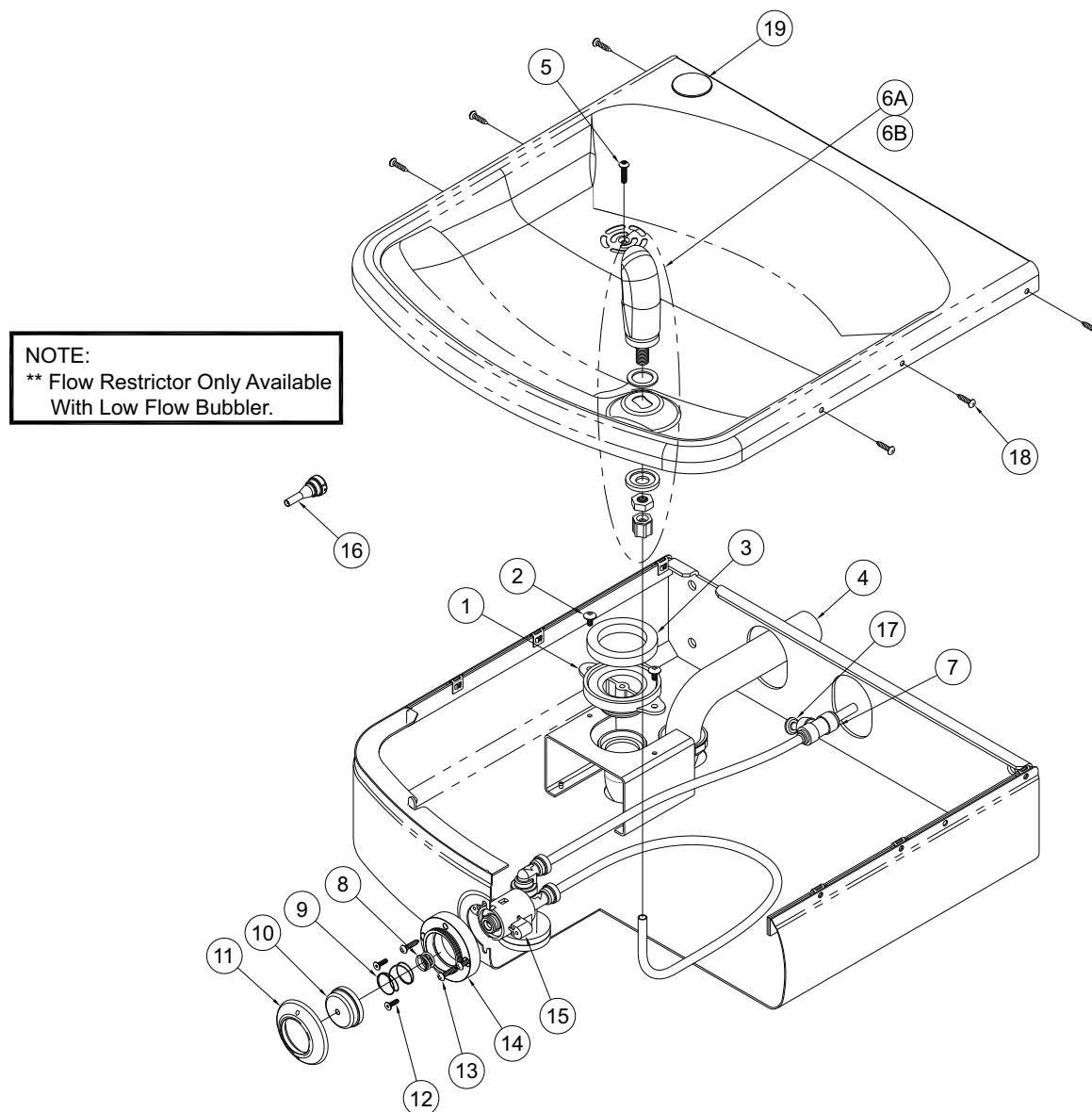
• **NOTE: STRAINER SCREEN MUST BE IN PLACE FOR WATER TO FLOW.**

CARTRIDGE VALVE PARTS BREAKDOWN

ITEM #	PART NUMBER	DESCRIPTION
1	7003-095-002	Valve Body Sub Assembly
2	7000-060-000	Valve Cartridge
3	7000-052-000	Retaining Nut
4	7003-864-000	Strainer, Auto Stop
5	7003-097-001	Strainer Cap
6	7003-194-199	Maintenance Tool



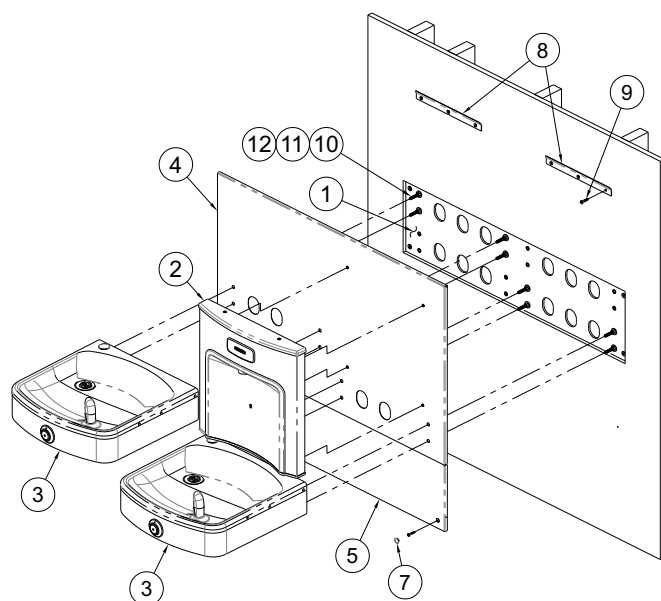
DRINKING FOUNTAIN PARTS BREAKDOWN DRAWING



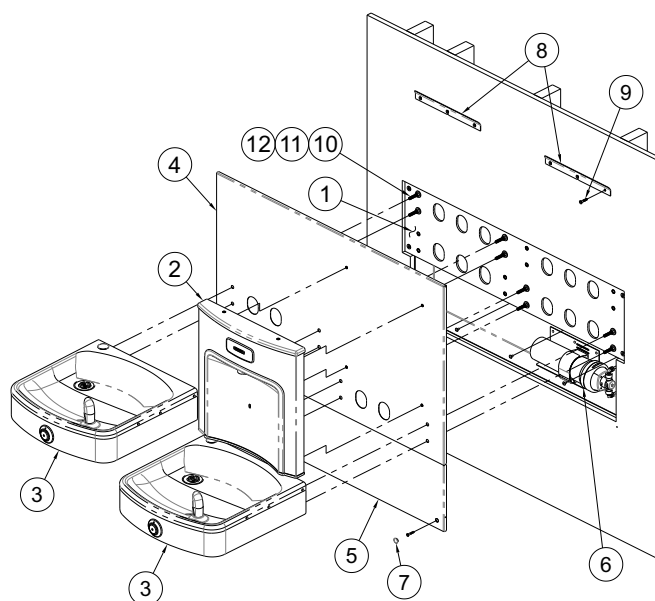
ITEM #	PART NUMBER	DESCRIPTION	ITEM #	PART NUMBER	DESCRIPTION
1	7000-005-199	Drain Adapter	10	7003-196-199	Pushbutton, Chrome
2	0116-016-000	#10-32 x 3/8" Phillips Truss Head Screw	11	7003-197-199	Escutcheon, Chrome
3	7000-006-000	Flat Drain Adapter Gasket	12	0161-060-000	#6-32 x 1/2" Socket Cap, Flat Hd Screw
4	7000-015-000	1-1/4" OD P-Trap	13	0124-055-000	#8 x 3/4" Phillips, Round Head Screw
5	0126-209-000	#10-32 x 3/4" Torx Button Head Screw	14	7003-198-199	Mounting Sleeve
6A	7000-012-001	Stainless Steel Bubbler Assembly	15	7003-095-001	Valve Body Sub Assembly
6B	7000-099-002	Flexible Gray Bubbler Assembly	16	7003-093-001	Flow Restrictor - Low-Flow Bubbler Only
7	1895-710-000	1/4" Push-In Union Tee	17	1895-715-000	1/4" Acetal Plug
8	7003-195-000	Spring, Overtravel	18	0250-016-000	#10 x 3/4" Sheet Metal Screw
9	7003-193-000	Spring, Pushbutton Return	19	7003-166-000	Round Plug

Repairs must be made with Murdock Manufacturing parts only. Please order through your local representative or distributor. The phone number to locate your local representative is 1.800.591.9360.

DRINKING FOUNTAIN



A192-BF

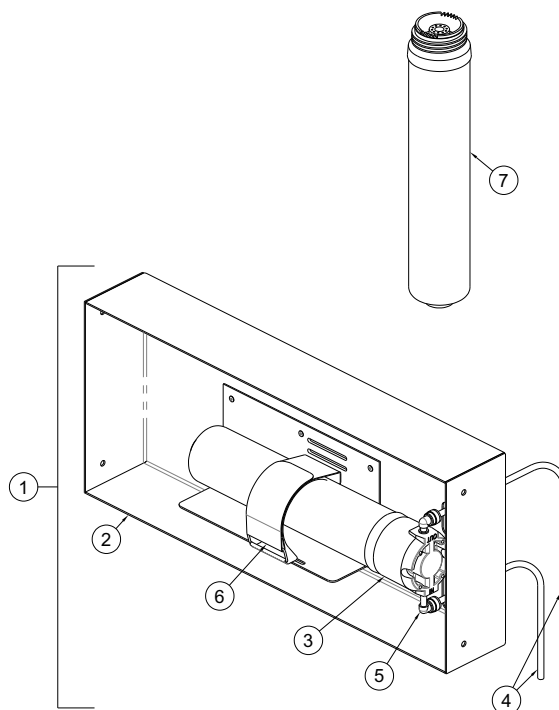


A192-BF-WF

ITEM#	PART NUMBER	DESCRIPTION
1	7001-716-001	Wall Mounting Plate
2	BF11	Bottle Filler with Pushbutton Operation
	BF12	Bottle Filler with Sensor Operation
	BF12-BCD	Bottle Filler with Sensor Operation & Bottle Counter Display
3	7001-700-001	Wide Contour Fountain
4	7001-711-001	Upper Trim Panel Assembly
5	7001-714-001	Lower Trim Panel
6	7001-718-001	Filter Assembly, 1,500 Gallons
	7001-719-001	Filter Assembly, 3,000 Gallons
7	7001-726-000	Round Plug
8	7001-709-199	Bracket, Upper Trim Panel Support
9	0250-013-000	Wood Screw, #12 x 1-1/4", Flat Head, S/S
10	0243-026-000	Stud, 5/16-18 UNC x 4" Lg, Zinc Plated
11	0332-006-000	Flat Washer, 5/16 Zinc Plated
12	0304-006-000	Hex Nut, 5/16-18 UNC , Zinc Plated Steel

Optional -WF1 Water Filter

ITEM	PART NUMBER	DESCRIPTION
1	7001-730-001	FILTER ENCLOSURE ASSY, 1,500 GALLONS
2	7001-728-002	FILTER ENCLOSURE
3	7012-309-001	WF1 FILTER, 1,500 GALLONS
4	2169-000-000	1/4" OD TUBE, 3-1/2 FEET LONG
5	1895-709-000	ELBOW, 1/4" OD PUSH-IN x 1/4" OD STEM
6	7012-319-000	STRAP W/ BUCKLE
7	7012-313-000	REPLACEMENT CARTRIDGE



Optional -WF3 Water Filter

ITEM	PART NUMBER	DESCRIPTION
1	7001-728-001	FILTER ENCLOSURE ASSY, 3,000 GALLONS
2	7001-728-002	FILTER ENCLOSURE
3	7012-333-001	WF3 FILTER, 3,000 GALLONS
4	2169-000-000	1/4" OD TUBE, 3-1/2 FEET LONG
5	1895-709-000	ELBOW, 1/4" PUSH-IN x 1/4" OD STEM
6	7012-319-000	STRAP W/ BUCKLE
7	7012-318-000	REPLACEMENT CARTRIDGE

