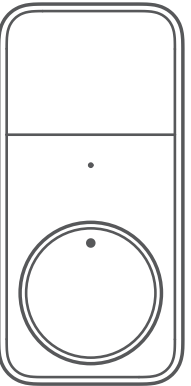


文件名称: Lock Pro-SMS-NA-2312	设计师:WQY	完成时间:2023/12/21
版本号: V1.0-2312	成品尺寸:60*100mm	
材质和工艺: 80g书写纸 风琴折		
更改内容: 备注:此页表格不印刷、红色线框不印刷		

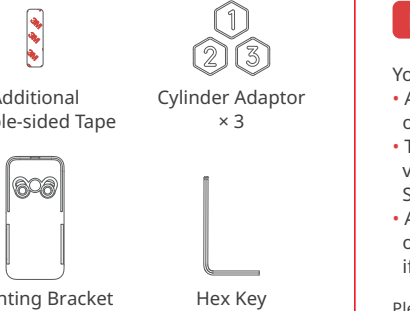
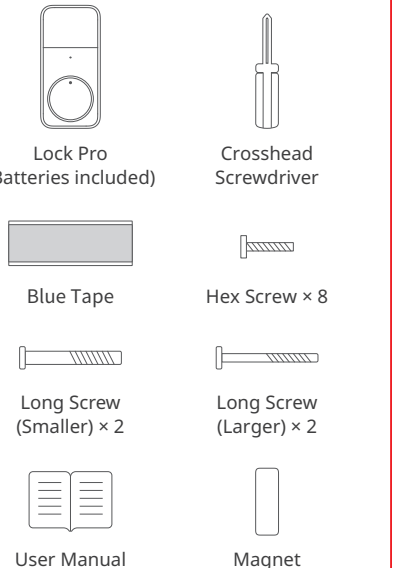
SwitchBot Lock Pro

User Manual

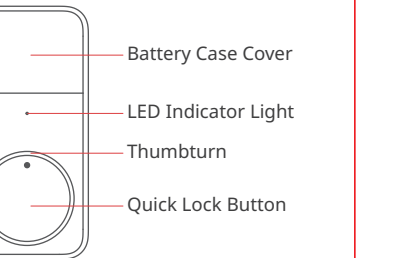


Please read this user manual carefully before using your device.

Package Contents



List of Components



Preparation

- You will need:
- A smartphone or tablet using Bluetooth 4.2 or later.
 - The latest version of our app, downloadable via the Apple App Store or Google Play Store.
 - A SwitchBot account, you can register via our app or sign in to your account directly if you already have one.

Please note: If you want to control your Lock remotely, receive notifications or use the third-party services, you will need a SwitchBot Hub (sold separately).



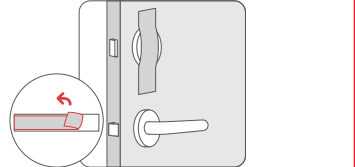
Safety Information

- Keep this product away from heat and humidity, and make sure it does not come into contact with fire or water.
- Do not touch or operate the product with wet hands.
- This product is a precision electronic product, please avoid physical damage.
- Do not attempt to disassemble, repair, or modify the product.
- Do not use the product where wireless devices are not allowed.

Installation

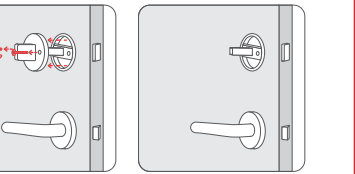
Step 1: Secure the exterior part of your lock cylinder

Use the blue tape provided to secure the exterior part of your lock cylinder to prevent dropping during installation.



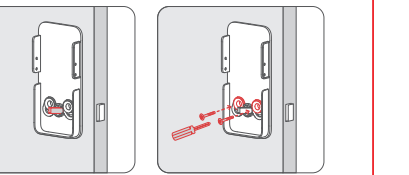
Step 2: Remove the interior part of your lock cylinder

Follow the instructions in your lock cylinder user manual, and remove all screws and the cylinder's interior part.



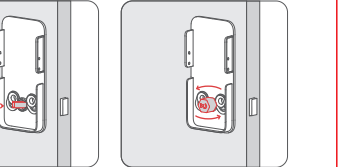
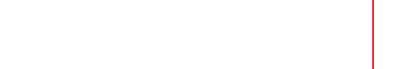
Step 3: Install the mounting bracket

Find suitable long screws in the package. Align the mounting bracket with the screw holes on the cylinder. Secure the mounting bracket using the screws from the previous step. Make sure the metal rod at the end of your lock cylinder stands out from the middle hole of the mounting bracket.



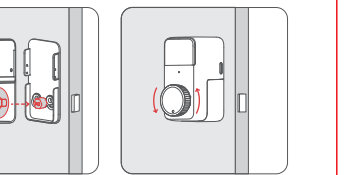
Step 4: Install the cylinder adaptor.

Select a cylinder adaptor that is compatible with the metal rod with the same cross-section. Attach it to the metal rod and make sure it can turn the cylinder.



Step 5: Install Lock Pro onto your door

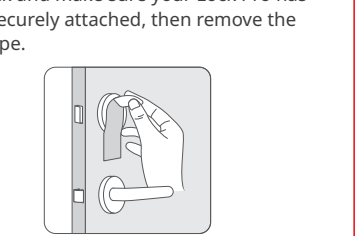
1. Turn the thumbturn of Lock Pro to align its back groove with the cylinder adaptor. Fit the cylinder adaptor into the groove securely. Then turn the Lock Pro thumbturn and make sure it can lock and unlock your door correctly.



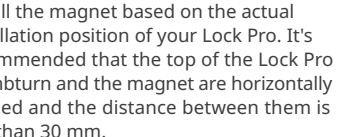
Step 6: Install the magnet

Install the magnet based on the actual installation position of your Lock Pro. It's recommended that the top of the Lock Pro thumbturn and the magnet are horizontally aligned and the distance between them is less than 30 mm.

Remove the tape liner from the back of the magnet, and stick it onto the door frame. Press the magnet for 60 seconds or more.

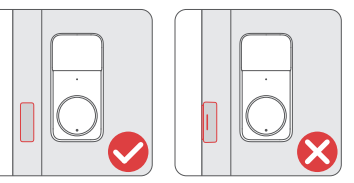


Step 7: Check and make sure your Lock Pro has been securely attached, then remove the blue tape.



Please note:

1. Orient the side with a mark to the thumbturn on your Lock Pro. Otherwise, the magnet will fail to detect door opening and closing.
 2. If the tape at the back of the magnet lacks adhesion, stick the Additional Double-sided Tape on the side with a mark. Then stick the magnet onto your door frame.
- Tip: After installing and calibrating with the magnet, you can view your door's status, and use features like Auto-Lock in our app.



www.switch-bot.com
V1.0-2312

FCC Warning
This device complies with Part 15 of the FCC Rules. Operation is subject to the following two conditions:
(1) This device may not cause harmful interference.
(2) This device must accept any interference received, including interference that may cause undesired operation.
NOTE: This equipment has been tested and found to comply with the limits for a Class B digital device, pursuant to part 15 of the FCC Rules. These limits are designed to provide reasonable protection against harmful interference in a residential installation. This equipment generates uses and can radiate radio frequency energy and, if not installed and used in accordance with the instructions, may cause harmful interference to radio communications. However, there is no guarantee that interference will not occur in a particular installation. If this equipment does cause harmful interference to radio or television reception, which can be determined by turning the equipment off and on, the user is encouraged to try to correct the interference by one or more of the following measures:
• Reorient or relocate the receiving antenna.
• Increase the separation between the equipment and receiver.
• Connect the equipment into an outlet on a circuit different from that to which the receiver is connected.
• Consult the dealer or an experienced radio/TV technician for help.
NOTE: The manufacturer is not responsible for any radio or TV interference caused by unauthorized modifications to this equipment. Such modifications could void the user's authority to operate the equipment.

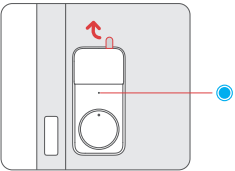
FCC Radiation Exposure Statement
This equipment complies with FCC radiation exposure limits set forth for an uncontrolled environment. This equipment should be installed and operated with minimum distance 20 cm between the radiator and your body.

IC Warning
This device contains license-exempt transmitter(s)/receiver(s) that comply with Innovation, Science and Economic Development Canada's license-exempt RSS(s). Operation is subject to the following two conditions:
(1) This device may not cause interference.
(2) This device must accept any interference, including interference that may cause undesired operation of the device.
L'émetteur/récepteur exempt de licence contenu dans le présent appareil est conforme aux CNR d'Innovation, Sciences et Développement économique Canada applicables aux appareils radio exempts de licence. L'exploitation est autorisée aux deux conditions suivantes :
(1) L'appareil ne doit pas produire de brouillage.
(2) L'appareil doit accepter tout brouillage radioélectrique subi, même si le brouillage est susceptible d'en compromettre le fonctionnement.

IC Radiation Exposure Statement
This equipment complies with the IC radiation exposure limits established for uncontrolled environment. This equipment must be installed and operated at least 20 cm from a radiator or your body.
Cet équipement est conforme aux limites d'exposition aux rayonnements de la IC établies pour un environnement non contrôlé. Cet équipement doit être installé et fonctionner à au moins 20cm de distance d'un radiateur ou de votre corps.

Step 7: Add Lock Pro to the SwitchBot app and calibrate.

- ① Remove the battery isolation tab. Once Lock Pro is powered on, the LED indicator light on the front will flash blue slowly, indicating your device is in pairing mode.



- ② Open our app and tap the "+" icon located in the right-hand corner of the home page and select Add Device. Find the device icon and select. Then follow the instructions to add Lock Pro and complete the calibration procedure.

Congratulations! You are ready to go.





Precautions

- This product will fail to lock/unlock your door if the batteries run out. Please regularly check the remaining battery via the app or the LED indicator light and replace them when needed. Please also bring a key when leaving home to avoid being locked out.
- This product is for indoor use only.
- If you notice any product malfunction, please stop using immediately and contact our customer support team.

Quick Lock Button

After Lock Pro is calibrated, you can lock or unlock your door by short pressing the Quick Lock Button. Other settings or disabling the button can be done via our app.

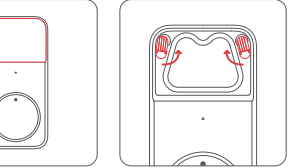
LED Indicator Light

LED Indicator Light	Description
 Blue light flashes slowly	In pairing mode / Upgrading firmware
 Blue and red light flashes slowly and alternately	Failed to be added / Failed to upgrade firmware
 Green light stays lit up	Locked/unlocked successfully
 Red light stays lit up	Low battery / Unusual activity

Battery Replacement

When your device battery level drops to less than 20%, Lock Pro will emit sound and a red light every time you lock or unlock. When this happens, please replace the batteries as soon as possible.

How to replace batteries: Open the battery case cover, turn the two clip buckles following the marks, remove the battery holder, and replace with 4 new AA batteries.



Resetting Factory Settings

If you are not using Lock Pro, open our app, navigate to Lock Pro > Settings, and delete your device. Once deleted, all data related to your Lock Pro will be deleted and your device will be reset to factory settings. Please operate with caution.

Please visit support.switch-bot.com for more details.

Find Out More

Please visit <https://support.switch-bot.com/hc/en-us/sections/4408365198103> for more details.



Specifications

Color: Black
Material: Aluminium–magnesium alloys, PC + ABS
Size: 120 × 59 × 83.9 mm (4.7 × 2.3 × 3.3 in.)
Weight: 435 g (15.3 oz.) (with batteries)
Battery: 4 AA dry batteries (1.5 V 2900 mAh)
Working Environment: Indoor only
System Requirements: iOS 14.0+, Android OS 5.0+
Network Connectivity: Bluetooth 4.2
Operating Temperature: -10 °C to 45 °C (14 °F to 113 °F)
Operating Humidity: 10 % to 90 % RH

Troubleshooting

For more information regarding troubleshooting your device, please visit support.switch-bot.com/hc/en-us/sections/4408365197079, or scan the QR code below.



Disclaimer

- This product is a precision device. We are not responsible for any damage or malfunction caused by improper handling, such as dropping or vibration during carrying or installation.
- This product is intended for lock control and is not intended to prevent theft. We are not responsible for any accidents or damages that occur after installing this product.
- Always carry a physical key when going out, as we are not responsible for the expenses of unlocking the door after being locked outside due to battery depletion or improper operation of the product.
- This product is designed for indoor use only. We are not responsible for any damage or malfunction caused by direct sunlight or exposure to wind and rain.
- We are not responsible for any damage to the door surface or peeling of paint when removing the product.
- We are not responsible for any issues arising from unauthorized repairs, adjustments, or modifications, or from using fake products for installation, repair, or modification.

- We are not responsible for any damages caused by natural disasters such as earthquakes, lightning, wind and water damage, fires that are not caused by the product, third party actions, intentional or negligent misuse by the customer, or other abnormal usage conditions.
- We are not responsible for any incidental damages arising from using or inability to use this product (such as changes or loss of recorded content, loss of business profits, business interruption, theft of property, being locked out due to battery depletion).
- We are not responsible for any damages resulting from not following the content of this manual.

Warranty

We warrant to the original owner of the product that the product will be free from defects in materials and workmanship. Please note that this limited warranty does not cover:

1. Products submitted beyond the original limited warranty period.
2. Products on which repairs or modifying have been attempted.
3. Products subjected to falls, extreme temperatures, water, or other operating conditions outside the product specifications.
4. Damage due to natural disaster (including but not limited to lightning, flood, tornado, earthquake, or hurricane, etc.).
5. Damage due to misuse, abuse, negligence or casualty (e.g. fire).
6. Other damage that is not attributable to defects in the manufacture of product materials.
7. Products purchased from unauthorized resellers.
8. Consumable parts (including but not limited to batteries).
9. Natural wear of the product.

Contact & Support

Setup and Troubleshooting:
support.switch-bot.com

Support Email:
support@switch-bot.com

Feedback: If you have any concerns or problems when using our products, please send feedback via our app through the Profile > Help & Feedback page.

CE Warning

To comply with RF exposure requirements, a minimum separation distance of 20 cm must be maintained between the user's body and the device, including the antenna. Use only the supplied or an approved antenna. This device is in compliance with the essential requirements and other relevant provisions of directive 2014/53/EU. All essential radio test suites have been carried out.

CE DOC

Hereby, Woan Technology (Shenzhen) Co., Ltd. declares that the radio equipment type W3500000 is in compliance with Directive

2014/53/EU. The full text of the EU declaration of conformity is available at the following internet address: support.switch-bot.com

This product can be used in EU member states and UK.

Manufacturer: Woan Technology (Shenzhen) Co., Ltd.
Address: Room 1101, Qiancheng Commercial Center, No. 5 Haicheng Road, Mabu Community, Xixiang Subdistrict, Bao'an District, Shenzhen, Guangdong, P.R.China, 518100

Operation Frequency (Max power)
BLE: 2402 MHz to 2480 MHz (4.6 dBm)
Operation temperature: -10 °C to 45 °C (14 °F to 113 °F)